

Table 12.12 10-Year Tree Canopy Calculation Worksheet			
Step	Totals	Reference	
<b>A. Tree Preservation Target Calculations and Statement</b>			
A 1	Pre-development area of existing tree canopy (from existing vegetation map)(SF) =		see § 12-0507.2
A 2	Percentage of gross site area covered by existing tree canopy =	0%	
A 3	Percentage of 10-year tree canopy required for site =	0%	see Table 12.4
A 4	Percentage of the 10-year tree canopy requirement that should be met through tree preservation =	0%	
A 5	Proposed percentage of canopy requirement that will be met through tree preservation =	0.0%	
A 6	Has the Tree Preservation Target minimum been met?	Yes	Provide Yes or No
A 7	If No for line A 6, then a request to deviate from the Tree Preservation Target shall be provided on the plan that states one or more of the justifications listed in § 12-0507.3 along with a narrative that provides a site-specific explanation of why the T	n/a	Provide sheet number, see § 12-0507.3
A 8	If step A 7 requires a narrative, it shall be prepared in accordance with § 12-0507.4	n/a	see § 12-0507.4

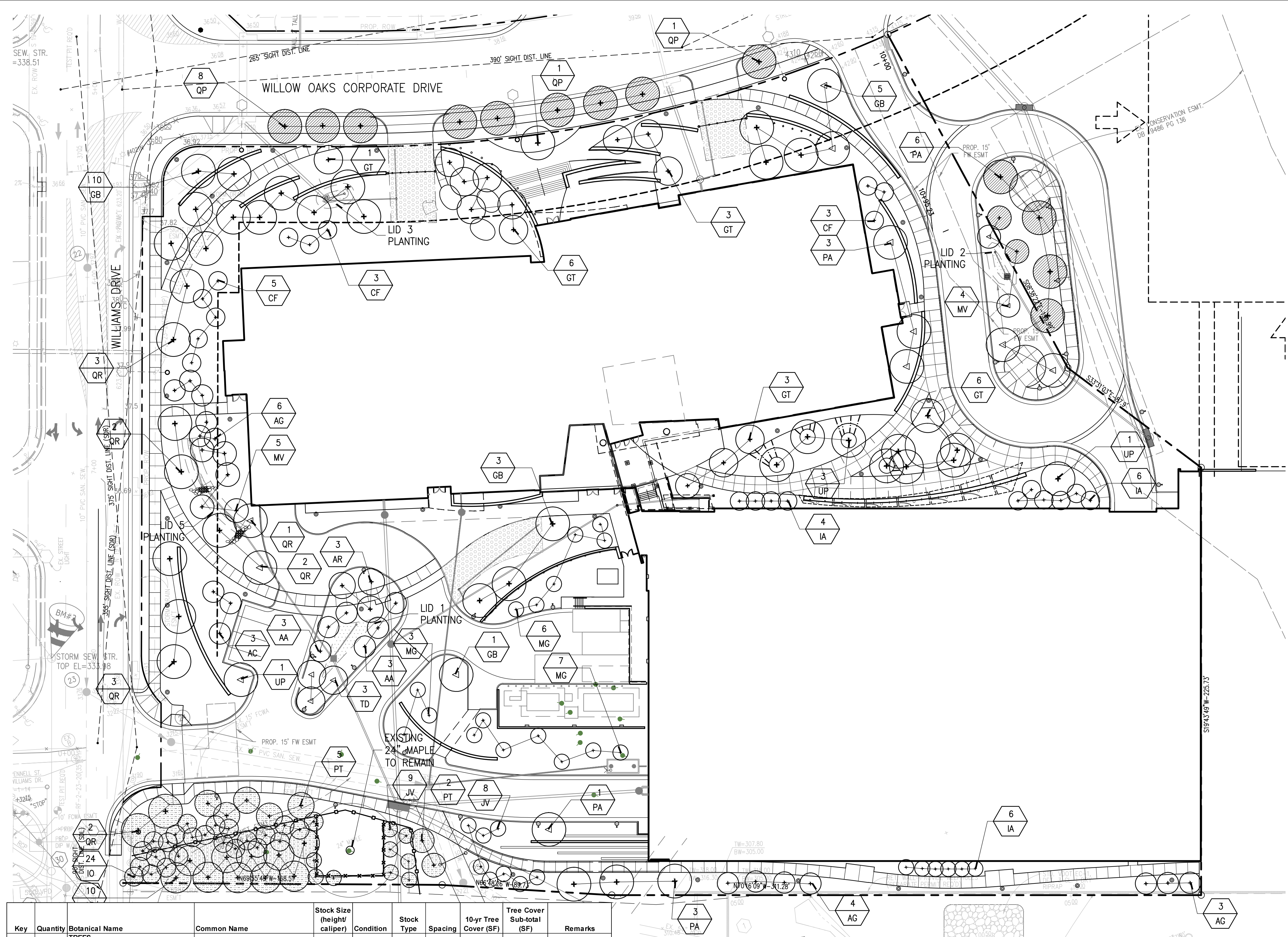
<b>B. Tree Canopy Requirement</b>			
B1	Identify gross site area (SF) =	211,858	§ 12-0510.1A
B2	Subtract area dedicated to parks, road frontage(SF) =	0	§ 12-0510.1B
B3	Subtract area of exemptions(SF) =	0	§ 12-0510.1C(1) through § 12-0510.1C(6)
B4	Adjusted gross site area (B1-B2-B3)(SF) =	211,858	Square feet
B5	Identify the site's zoning and/or use	C3	
B6	Percentage of 10-year tree canopy required =	10.0%	§ 12-0509.1 and Table 12.4
B7	Area of 10-year Tree Canopy Required (B4 x B6)(SF) =	211,858	Square feet
B8	Modification of 10-year Tree Canopy Requirements requested?	NO	Yes or No
B9	If B8 is yes, then list plan sheet where modification request is located	n/a	Sheet number

<b>C. Tree Preservation</b>			
C 1	Tree Preservation Target Area(SF) =	0	Square Feet
C 2	Total canopy area meeting standards of § 12-0400 (SF) =	0	Square Feet
C 3	C 2 x 1.25(SF) =	0	§ 12-0509.3B
C 4	Total canopy area provided by unique or valuable forest or woodland communities(SF) =	0	Square Feet
C 5	C 4 x 1.5(SF) =	0	§ 12-0509.3B(1)
C 6	total of canopy area provided by "Heritage," "Memorial," "Specimen," or "Street" trees (SF) =	0	Square Feet
C 7	C 6 x 1.5 to 3.0 (SF) =	0	§ 12-0509.3B(2)
C 8	Canopy area of trees within resource Protection Areas and 100-year floodplains (SF) =	0	Square Feet
C 9	C 8 x 1.0 (SF) =	0	§ 12-0509.3C(1)
C 10	Total of C 3, C 5, C 7 and C 9 =	0	If area of C 10 is less than B 7 remainder of requirement must be met through tree planting - go to D

<b>D. Tree Planting</b>			
D 1	Area of canopy to be met through tree planting (B 7-C10) =	21,186	Square feet
D 2	Area of canopy planted for air quality benefits =	0	Square feet
D 3	D 2 x 1.5 (SF) =	0	§ 12-0509.4B(1)
D 4	Area of canopy planted for energy conservation =	0	Square feet
D 5	D 4 x 1.5 (SF) =	0	§ 12-0509.4B(2)
D 6	Area of canopy planted for water quality benefits =	0	Square feet
D 7	D 6 x 1.25 (SF) =	0	§ 12-0509.4B(3)
D 8	Area of canopy planted for wildlife benefits =	0	Square feet
D 9	D 8 x 1.5 (SF) =	0	§ 12-0509.4B(4)
D 10	Area of canopy provided by native trees =	0	Square feet
D 11	D 10 x 1.5 (SF) =	0	§ 12-0509.4B(5)
D 12	Area of canopy provided by improved cultivars and varieties =	0	Square feet
D 13	D 12 x 1.25 (SF) =	0	§ 12-0509.4B(6)
D 14	Area of canopy provided through tree seedlings (SF) =	0	§ 12-0509.4D(1)(a)
D 15	D 14 x 1.0 =	0	Square feet
D 16	Percentage of D 14 represented by D 15 =	0.0%	Must not exceed 33% of D 14
D 17	Area of canopy to be planted with no benefit credits =	0	Square feet
D 18	Total of canopy area provided through tree planting =	23,025	Square feet
D 19	Is an offsite planting relief requested?	NO	Yes or No
D 20	Tree Bank or Tree Fund?	NO	Yes or No § 12-0511
D 21	Canopy area requested to be provided through offsite banking or tree fund =	NO	Square feet
D 22	Amount to be deposited into the Tree Preservation and Planting Fund =	NO	

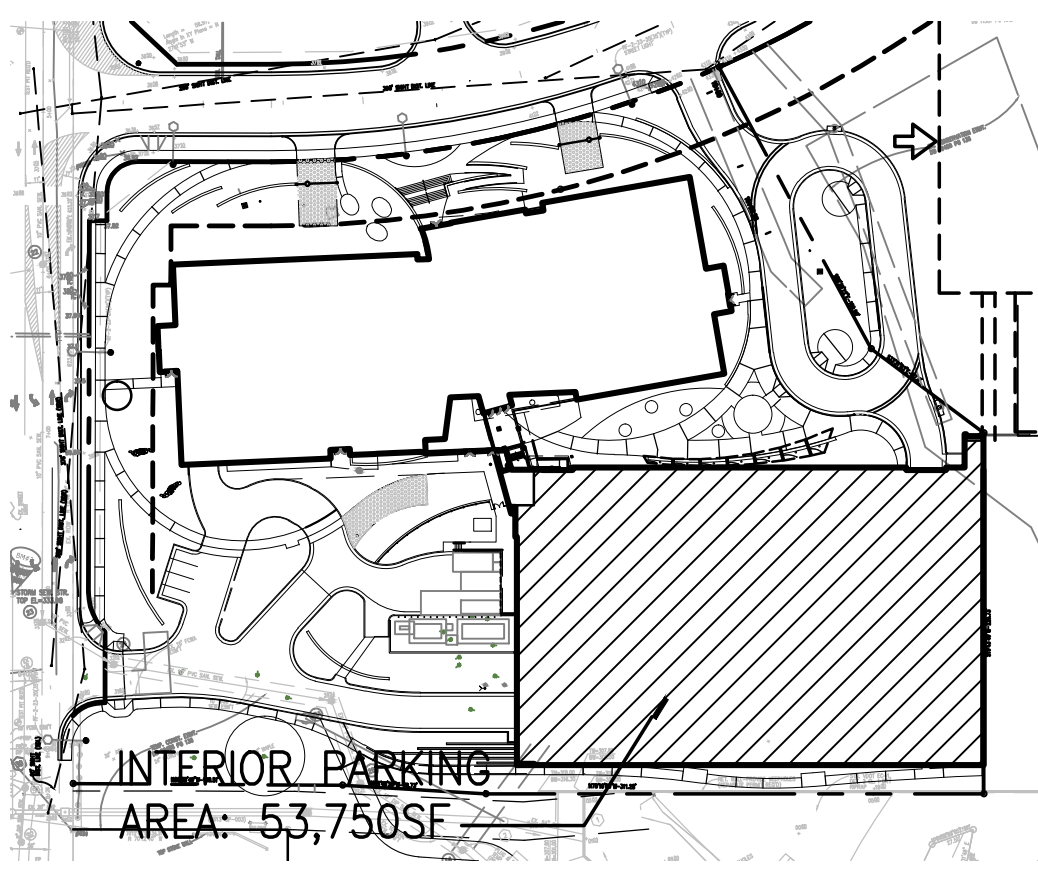
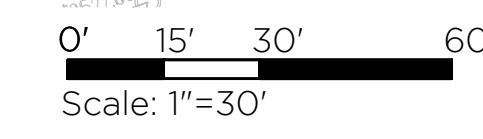
<b>E. Total of 10-year Tree Canopy Provided</b>			
E 1	Total of canopy area provided through tree preservation (C 10) =	0	Square feet
E 2	Total of canopy area provided through tree planting (D 18) =	23,025	Square feet
E 3	Total of canopy area provided through offsite mechanism (D 21) =	0	Square feet
E 4	Total of 10-year Tree Canopy Provided (SF) =	23,025	Total of E 1 through E 3, area should meet or exceed area in B 7

Table 12.13 Interior Parking Lot Landscaping Calculations		
	Remarks	
Area to be counted (SF) =	53,750	square feet
Interior Landscaping Required (5%) =	2687.5	square feet
Total Shade tree Canopy Provided	3200	Counting benefit credits
Total Area Required (SF) =	2687.5	5%
Total Area Provided (SF) =	3200	6%

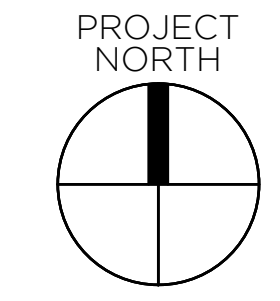


Key	Quantity	Botanical Name	Common Name	Stock Size (height/ caliper)	Condition	Stock Type	Spacing	10-yr Tree Cover (SF)	Tree Cover Sub-total (SF)	Remarks
<b>TREES</b>										
<b>Site Tree Planting (not including parking lot, trees outside of property, or street-tree planting.)</b>										
AA	6	Amelanchier arborea	Downy Serviceberry	2" cal.	B&B	As shown	50	300		
AC	3	Abies concolor spp.	White Fir	8" ht.	B&B	As shown	75	225		
AG	13	Acer glabrum "Flame"	Flame Red Maple	2" cal.	B&B	As shown	100	1,300		
AR	13	Acer rubrum "Franksred"	Franksred Red Maple	3" cal.	B&B	As shown	250	3,250		
CF	11	Carpinus betulus "Fastigiata"	Fastigate European Beech	3" cal.	B&B	As shown	75	825		
GB	16	Ginkgo biloba "Autumn Gold"	Ginkgo	3" cal.	B&B	As shown	75	1,200		
GT	19	Gleditsia triacanthos inermis	Thornless honeylocust	3" cal.	B&B	As shown	175	3,325		
IA	16	Ilex x attenuata "Fosteni"	Foster's Holly	10" ht.	B&B	As shown	75	1,200		
IO	24	Ilex opaca	American Holly	8-10" ht.	B&B	As shown	125	3,000		
JV	17	Juniperus virginiana "Princeton Sentry"	Sentry Juniper	9" ht.	B&B	As shown	50	850		
MG	16	Magnolia grandiflora "Little Gem"	Little Gem Magnolia	7-8" ht.	B&B	As shown	50	800		
MV	5	Magnolia virginiana	Sweetbay Magnolia	3" cal.	B&B	As shown	125	625		3 stem min.
PA	3	Platanus x acerifolia "Yarwood"	Liberty London Planetree	3" cal.	B&B	As shown	250	750		
PT	7	Pinus taeda	Loblolly Pine	7" ht.	B&B	As shown	150	1,050		
QP	1	Quercus phellos "Hightower"	Hightower Willow Oak	3" cal.	B&B	As shown	250	250		
QR	11	Quercus rubra spp.	Red Oak	3" cal.	B&B	As shown	250	2,750		
TD	3	Taxodium distichum spp.	Bald Cypress	3" cal.	B&B	As shown	175	525		
UP	4	Ulmus parvifolia "Bosque"	Chinese Elm Bosque	2" cal.	B&B	As shown	200	800		
<b>TOTAL SITE TREE COVER PROVIDED BY PLANTING (SF):</b>									<b>23,025</b>	
<b>Tree Planting Coverage for Interior Parking Lot</b>										
GB	3	Ginkgo biloba "Autumn Gold"	Ginkgo	3" cal.	B&B	As shown	75	225		
PA	6	Platanus x acerifolia "Yarwood"	Liberty London Planetree	3" cal.	B&B	As shown	250	1,500		
QR	2	Quercus rubra spp.	Red Oak	3" cal.	B&B	As shown	250	500		
MV	2	Magnolia virginiana	Sweetbay Magnolia	3" cal.	B&B	As shown	125	250		3 stem min.
UP	1	Ulmus parvifolia "Bosque"	Chinese Elm Bosque	2" cal.	B&B	As shown	200	200		
TD	3	Taxodium distichum spp.	Bald Cypress	3" cal.	B&B	As shown	175	525		
<b>TOTAL TREE COVER PROVIDED BY PLANTING FOR INTERIOR PARKING (SF):</b>									<b>3,200</b>	
<b>Trees Not Included in Calculations</b>										
<b>Trees Outside of Property Line</b>										
MV	2	Magnolia virginiana	Sweetbay Magnolia	3" cal.	B&B	As shown	125	250		3 stem min.
PA	4	Platanus x acerifolia "Yarwood"	Liberty London Planetree	3" cal.	B&B	As shown	250	1,000		
<b>Street Tree Planting</b>										
QP	9	Quercus phellos "Hightower"	Hightower Willow Oak	3" cal.	B&B	As shown	250	2,250		

NOTE: ALL TREES SHALL BE LIMBED A MINIMUM OF 10' HIGH ALONG PUBLIC STREETS AND PEDESTRIAN ACCESSES.



- LEGEND**
- PROPOSED TREE
  - ◁ PROPOSED TREE (INTERNAL PARKING LOT PLANTING)
  - ◐ PROPOSED TREE (STREET TREE PLANTING OR OUTSIDE OF PROPERTY LINE)
  - ◑ TRANSITIONAL SCREENING PLANTING AREA

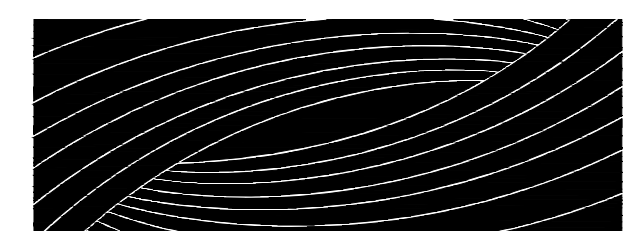


# 8221 WILLOW OAKS CORPORATE DRIVE

PROVIDENCE DISTRICT  
FAIRFAX COUNTY, VIRGINIA

FAIRFAX COUNTY DPWES  
CLIENT

12000 GOVERNMENT CENTER  
PARKWAY SUITE 449  
FAIRFAX VA 22035  
ADDRESS



**RHODESIDE & HARWELL**  
320 King Street  
Suite 202  
Alexandria, VA 22314

703-683-7447 ph  
703-683-7449 fx  
www.rhodeside-harwell.com

**REVISION:**

06/21/12 ISSUED FOR CONSTRUCTION

SCALE: As Indicated

SHEET NAME: **LANDSCAPE PLAN**

SHEET NUMBER:

**SHEET 31 OF 61**  
DATE: 28 MARCH 2011