



How to Use an RRFB

(Rectangular Rapid-Flashing Beacon)

Pedestrians and Bicyclists in the Crosswalk

1. Press the button to activate the flashing yellow warning lights, telling drivers a person is ready to cross.
2. Make eye contact with drivers to confirm they are yielding before entering the crosswalk.
3. Continue to scan both directions as you cross the street.
4. Bicyclists on the roadway should follow tips for “drivers and on-street bicyclists” on reverse.

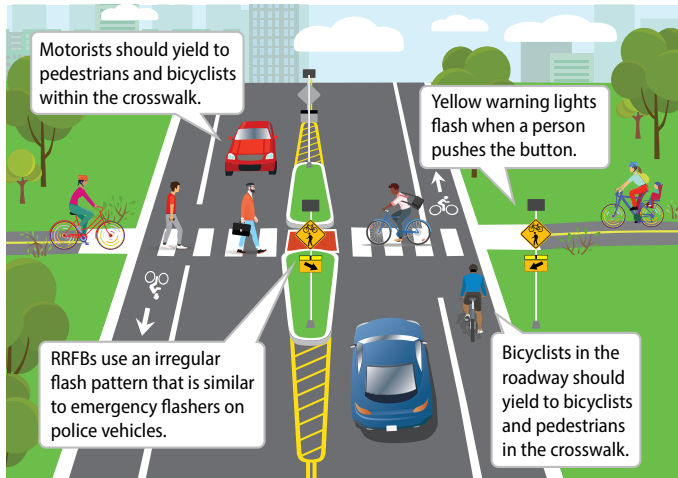
Fairfax County Department of Transportation (FCDOT)
www.fairfaxcounty.gov/transportation
Search “RRFB”



A Fairfax County, Virginia publication.

To request this information in an alternate format,
call FCDOT at 703-877-5600, TTY 711.

Source: AlertTodayFlorida.com funded by Florida DOT



How to Use an RRFB

(Rectangular Rapid-Flashing Beacon)

Drivers and On-Street Bicyclists

1. Anticipate people crossing whenever approaching a crosswalk.
2. Yellow warning lights may flash to indicate that people are crossing or are ready to cross.
3. Yield to people on foot or bicycle within a crosswalk.
4. Do not pass another vehicle that is yielding.
5. When yielding, give space between your vehicle and the crosswalk so your vehicle does not block another driver's view of people crossing.
6. Do not stop in or block a crosswalk.
7. Wait for people walking and bicycling to clear the crosswalk before proceeding, regardless of the status of the RRFB.

Fairfax County Department of Transportation (FCDOT)
www.fairfaxcounty.gov/transportation
Search "RRFB"



A Fairfax County, Virginia publication.

To request this information in an alternate format, call FCDOT at 703-877-5600, TTY 711.

Source: AlertTodayFlorida.com funded by Florida DOT