

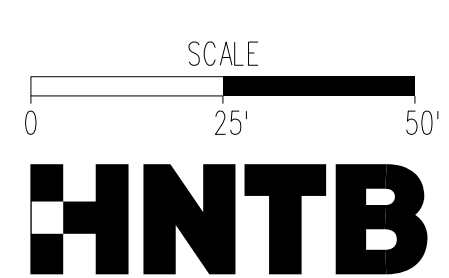
BEGIN PROJECT 2640-100-000
 STA. 101+00.00 RTE. 28 @
 MATCH EXIST. PAVEMENT

MATCHLINE, STA. 107+00.00, SEE SHEET 4

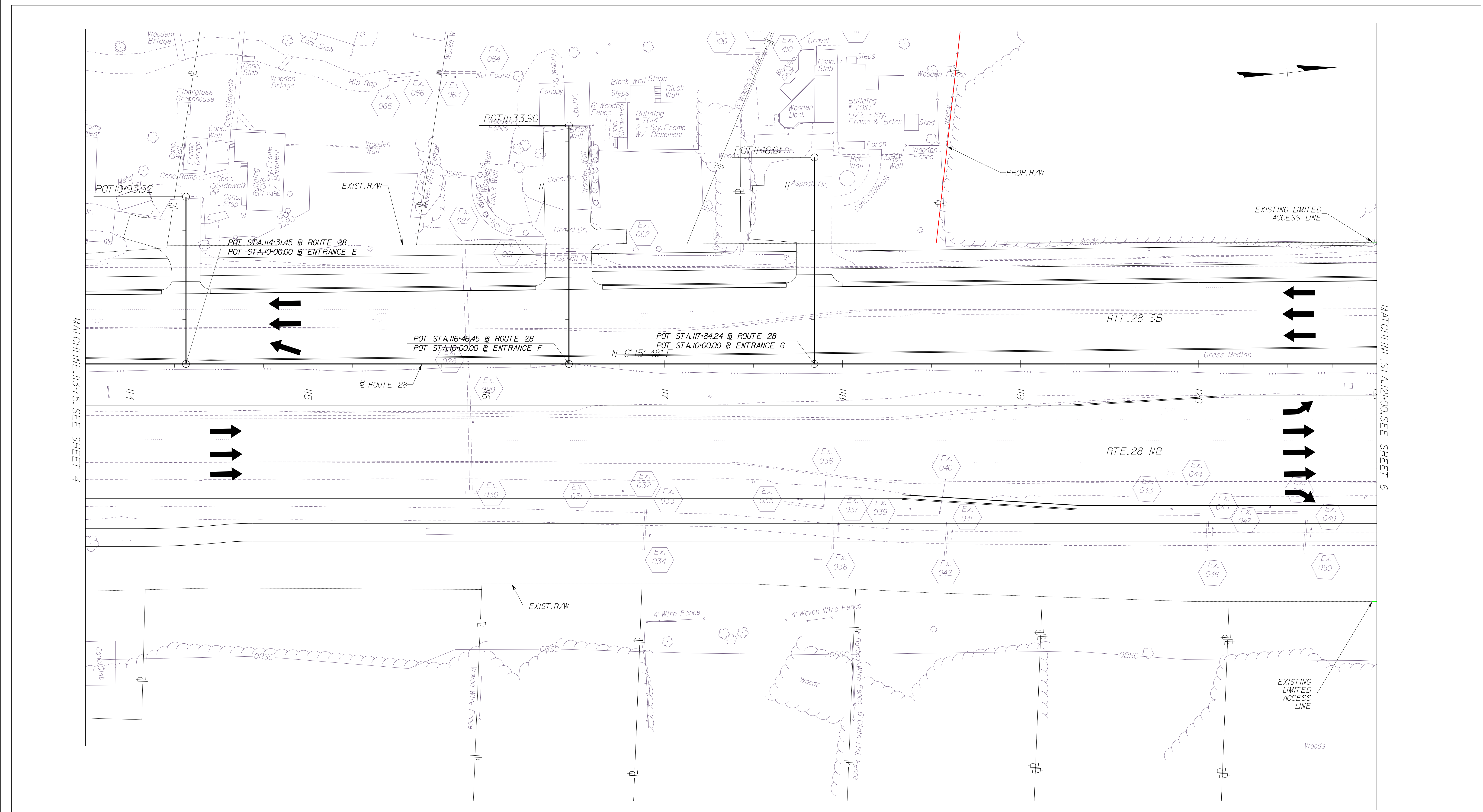
LEGEND

—	PROPOSED RIGHT OF WAY
—	PROPOSED LIMITED ACCESS
- - -	EXISTING LIMITED ACCESS
- - - - -	EXISTING RIGHT OF WAY

THESE PLANS ARE UNFINISHED AND UNAPPROVED AND ARE NOT TO BE USED FOR ANY TYPE OF CONSTRUCTION OR THE ACQUISITION OF RIGHT OF WAY.



EMERGENCY POLICE - FIRE - RESCUE 911 FAIRFAX COUNTY, VIRGINIA DEPARTMENT OF PUBLIC WORKS AND ENVIRONMENTAL SERVICES UTILITIES DESIGN & CONSTRUCTION DIVISION 12000 GOVERNMENT CENTER PARKWAY, SUITE 463 FAIRFAX, VA., 22035-0052				
OFFICE OF CAPITAL FACILITIES 703-324-5800		ROUTE 28 WIDENING PRINCE WILLIAM CO. LINE TO ROUTE 29 LIMITED ACCESS EXHIBIT STA. 100+00.00 TO STA. 107+00.00 CONTRACT NO. PROJECT NO.		
SCALE	DESIGNED BY: TW	BY	APPROVED	DATE
	DRAFTED BY: DB			
	CHECKED BY: SDF			
				SHEET 3
FUND #				



MATCHLINE: 113+75, SEE SHEET 4

MATCHLINE: STA. 121+00, SEE SHEET 6

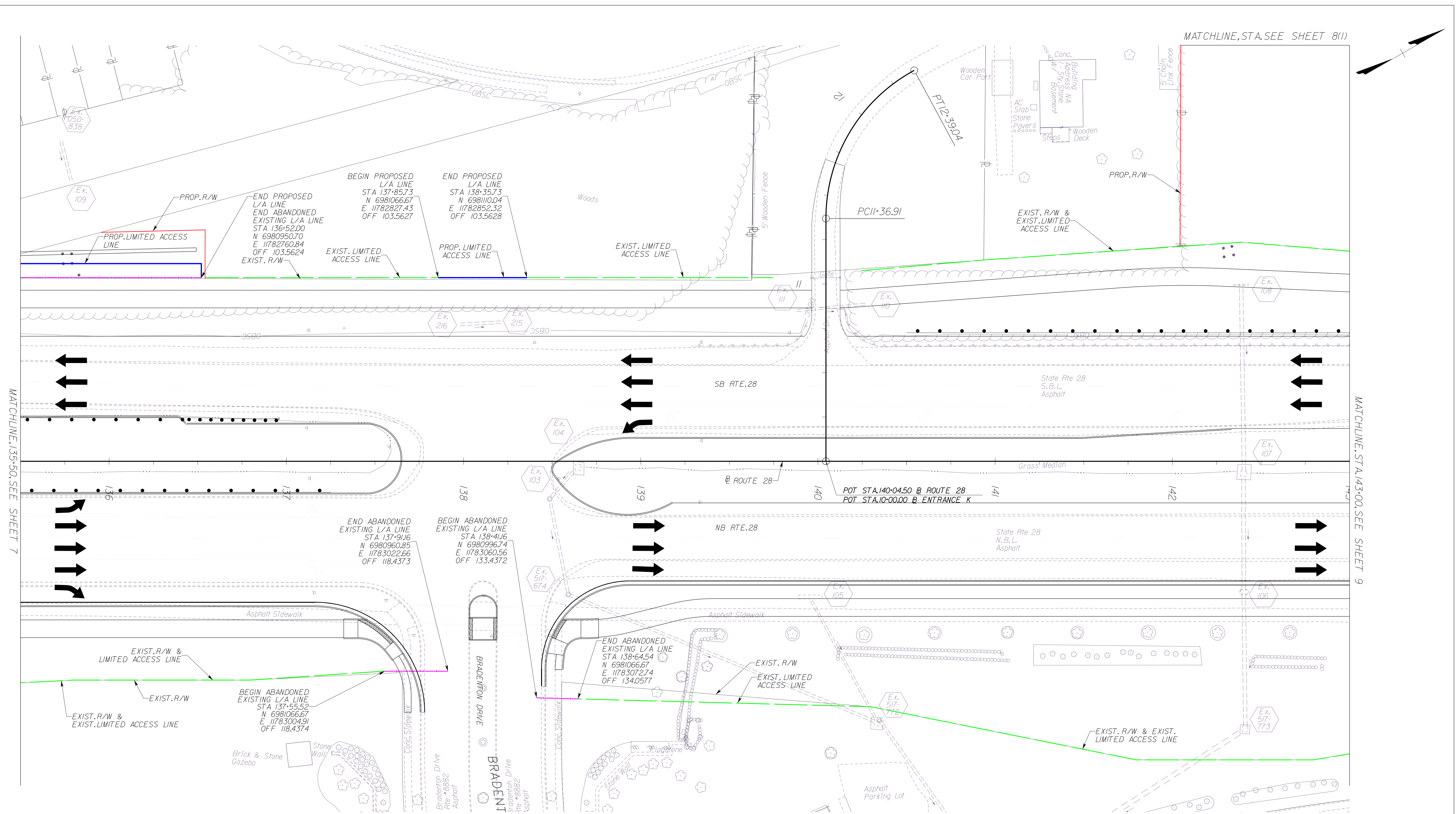
LEGEND

—	PROPOSED RIGHT OF WAY
—	PROPOSED LIMITED ACCESS
- - -	EXISTING LIMITED ACCESS
- - - - -	EXISTING RIGHT OF WAY

THESE PLANS ARE UNFINISHED AND UNAPPROVED AND ARE NOT TO BE USED FOR ANY TYPE OF CONSTRUCTION OR THE ACQUISITION OF RIGHT OF WAY.



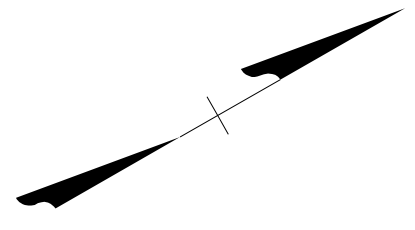
EMERGENCY POLICE - FIRE - RESCUE 911 FAIRFAX COUNTY, VIRGINIA DEPARTMENT OF PUBLIC WORKS AND ENVIRONMENTAL SERVICES UTILITIES DESIGN & CONSTRUCTION DIVISION 12000 GOVERNMENT CENTER PARKWAY, SUITE 463 FAIRFAX, VA., 22035-0052				
OFFICE OF CAPITAL FACILITIES 703-324-5800			ROUTE 28 WIDENING PRINCE WILLIAM CO. LINE TO ROUTE 29 LIMITED ACCESS EXHIBIT STA. 113+75.00 TO STA. 121+00.00 CONTRACT NO. PROJECT NO.	
R	E	V	I	S
I	O	N	S	#
△#	DESCRIPTION	BY	APPROVED	DATE
SCALE		DESIGNED BY: TW	CHECKED BY: SDF	SHEET 5
FUND #				



MATCHLINE, STA. 135+50.00, SEE SHEET 7

MATCHLINE, STA. 143+00.00, SEE SHEET 9

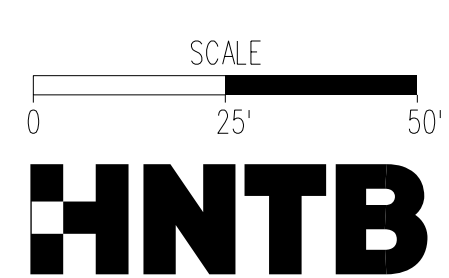
MATCHLINE, STA. SEE SHEET 8(1)



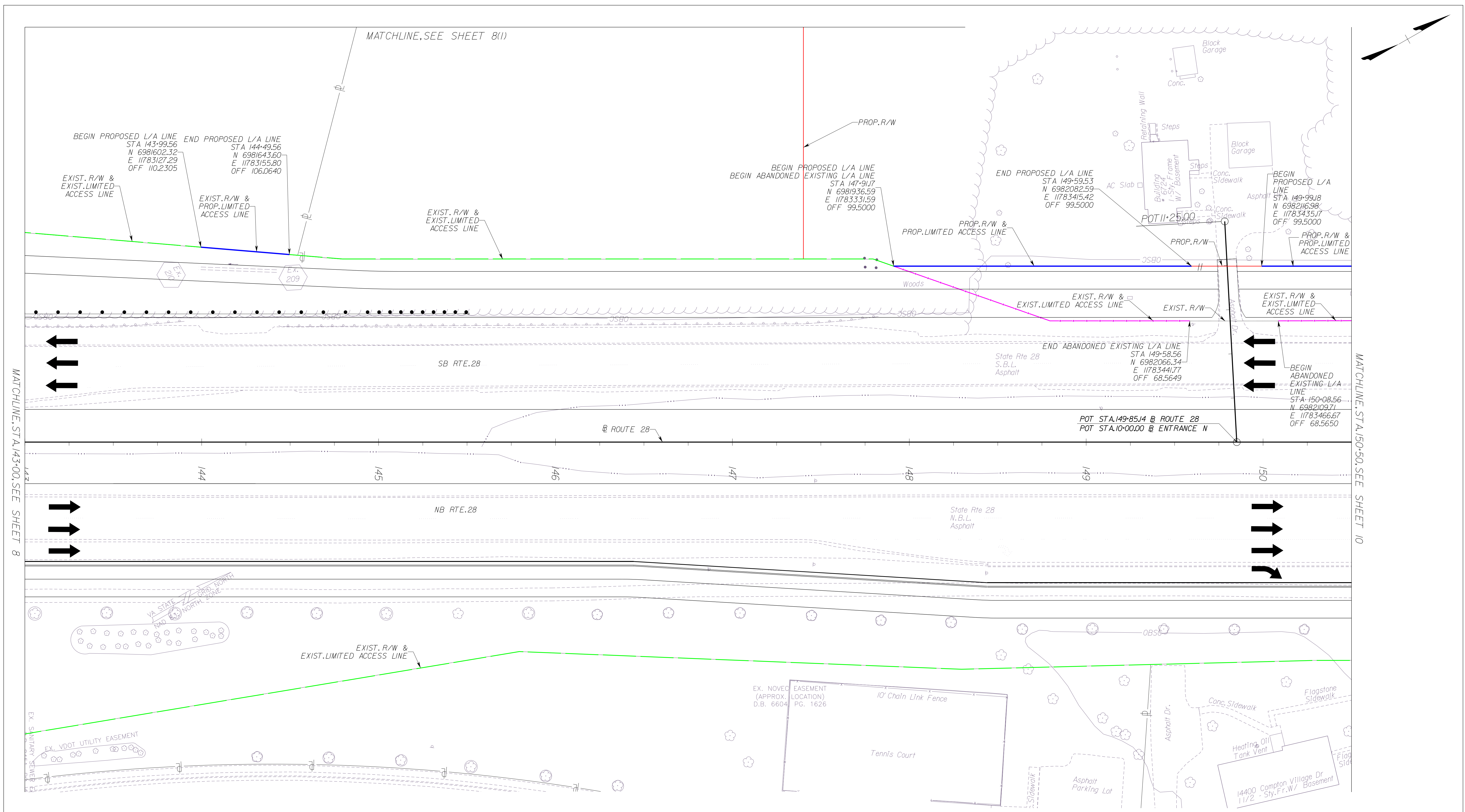
LEGEND

—	PROPOSED RIGHT OF WAY
—	PROPOSED LIMITED ACCESS
- - -	EXISTING LIMITED ACCESS
- - - - -	EXISTING RIGHT OF WAY
- - - - -	EXISTING LIMITED ACCESS TO BE ABANDONED

THESE PLANS ARE UNFINISHED AND UNAPPROVED AND ARE NOT TO BE USED FOR ANY TYPE OF CONSTRUCTION OR THE ACQUISITION OF RIGHT OF WAY.



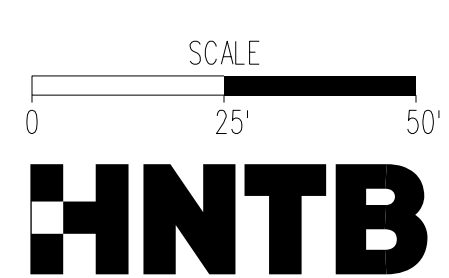
EMERGENCY POLICE - FIRE - RESCUE 911 FAIRFAX COUNTY, VIRGINIA DEPARTMENT OF PUBLIC WORKS AND ENVIRONMENTAL SERVICES UTILITIES DESIGN & CONSTRUCTION DIVISION 12000 GOVERNMENT CENTER PARKWAY, SUITE 463 FAIRFAX, VA., 22035-0052				
OFFICE OF CAPITAL FACILITIES 703-324-5800		ROUTE 28 WIDENING PRINCE WILLIAM CO. LINE TO ROUTE 29 LIMITED ACCESS EXHIBIT STA. 135+50.00 TO STA. 143+00.00 CONTRACT NO. PROJECT NO.		
SCALE	DESIGNED BY: TW	DRAFTED BY: DB	CHECKED BY: SDF	SHEET 8
				FUND #



LEGEND

- PROPOSED RIGHT OF WAY
- PROPOSED LIMITED ACCESS
- - - EXISTING LIMITED ACCESS
- - - EXISTING RIGHT OF WAY
- - - EXISTING LIMITED ACCESS TO BE ABANDONED

THESE PLANS ARE UNFINISHED AND UNAPPROVED AND ARE NOT TO BE USED FOR ANY TYPE OF CONSTRUCTION OR THE ACQUISITION OF RIGHT OF WAY.



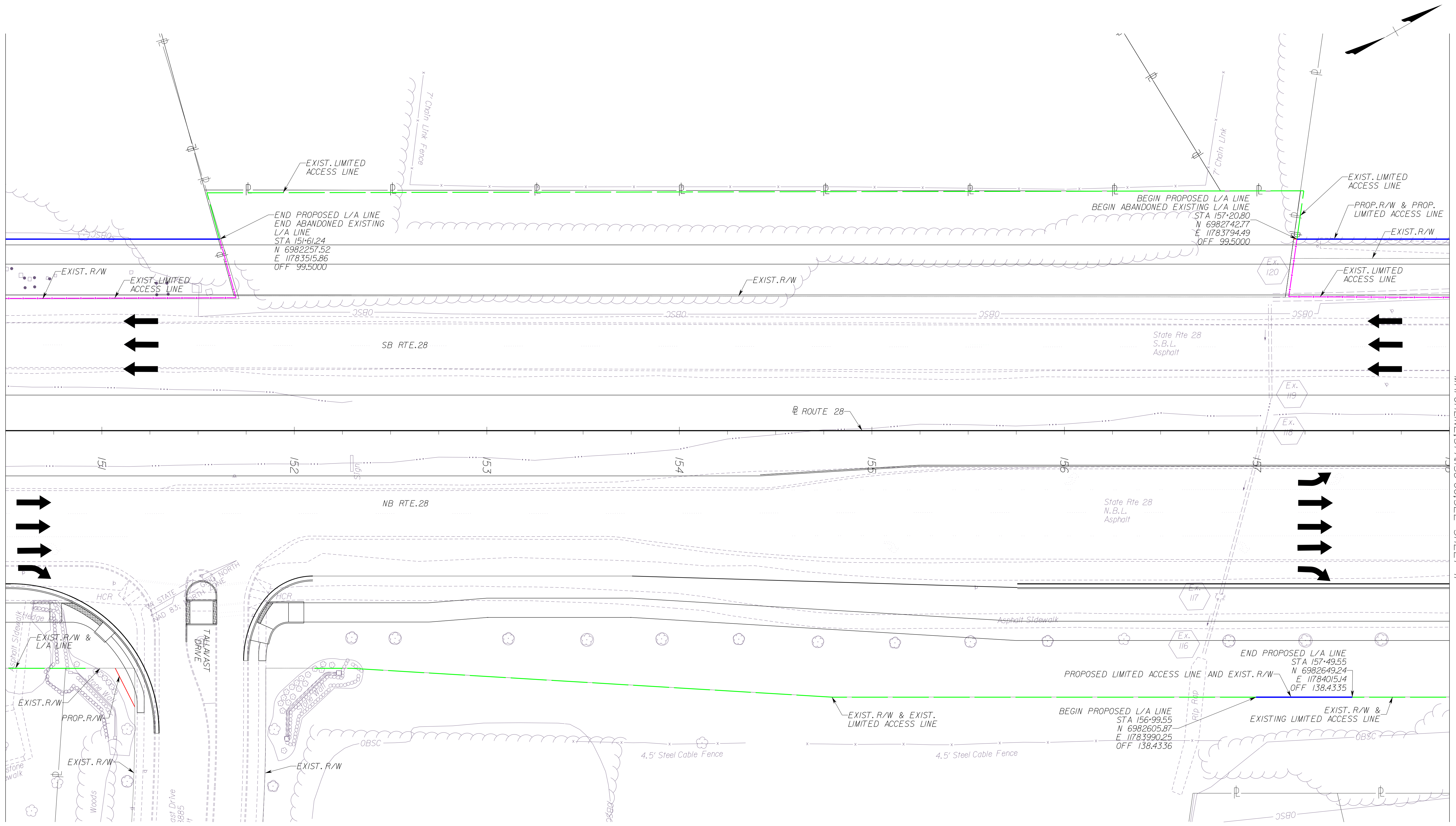
EMERGENCY POLICE - FIRE - RESCUE 911
FAIRFAX COUNTY, VIRGINIA
 DEPARTMENT OF PUBLIC WORKS AND ENVIRONMENTAL SERVICES
 UTILITIES DESIGN & CONSTRUCTION DIVISION
 12000 GOVERNMENT CENTER PARKWAY, SUITE 463 FAIRFAX, VA., 22035-0052

OFFICE OF CAPITAL FACILITIES 703-324-5800	
ROUTE 28 WIDENING PRINCE WILLIAM CO. LINE TO ROUTE 29 LIMITED ACCESS EXHIBIT STA. 143+00.00 TO STA. 150+50.00	
CONTRACT NO.	PROJECT NO.
SCALE	DESIGNED BY: TW DRAFTED BY: DB CHECKED BY: SDF
SHEET 9	
FUND #	

MATCHLINE, STA. 143+00, SEE SHEET 8

MATCHLINE, STA. 150+50, SEE SHEET 10

MATCHLINE, SEE SHEET 8(I)



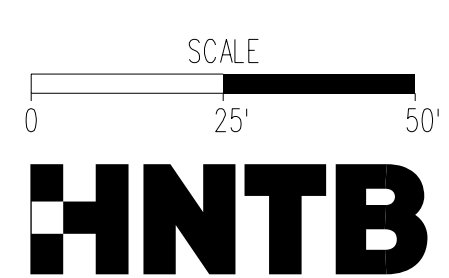
MATCHLINE, STA. 150+50.00, SEE SHEET 9

MATCHLINE, STA. 158+00.00, SEE SHEET 11

LEGEND

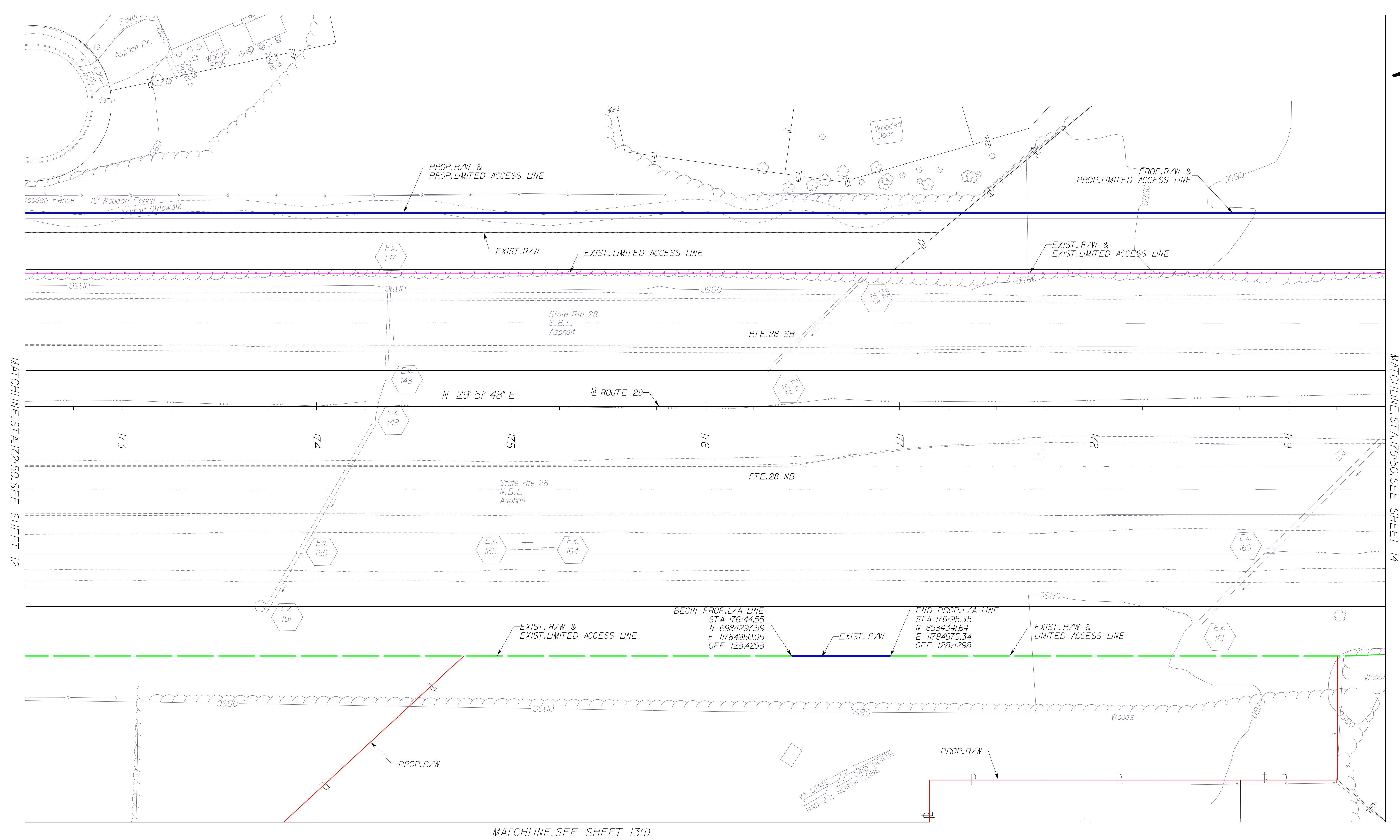
- PROPOSED RIGHT OF WAY
- PROPOSED LIMITED ACCESS
- - - EXISTING LIMITED ACCESS
- - - EXISTING RIGHT OF WAY
- - - EXISTING LIMITED ACCESS TO BE ABANDONED

THESE PLANS ARE UNFINISHED AND UNAPPROVED AND ARE NOT TO BE USED FOR ANY TYPE OF CONSTRUCTION OR THE ACQUISITION OF RIGHT OF WAY.



EMERGENCY POLICE - FIRE - RESCUE 911 FAIRFAX COUNTY, VIRGINIA DEPARTMENT OF PUBLIC WORKS AND ENVIRONMENTAL SERVICES UTILITIES DESIGN & CONSTRUCTION DIVISION 12000 GOVERNMENT CENTER PARKWAY, SUITE 463 FAIRFAX, VA., 22035-0052				
OFFICE OF CAPITAL FACILITIES 703-324-5800				
ROUTE 28 WIDENING PRINCE WILLIAM CO. LINE TO ROUTE 29 LIMITED ACCESS EXHIBIT STA. 150+50.00 TO STA. 158+00.00				
CONTRACT NO.		PROJECT NO.		
SCALE		DESIGNED BY: TW	DRAFTED BY: DB	SHEET 10
S		CHECKED BY: SDF		
R	E	V	I	S
I	O	N	S	#
Δ	#	DESCRIPTION	BY	APPROVED DATE

FUND #



MATCHLINE, STA. 172+50.00, SEE SHEET 12

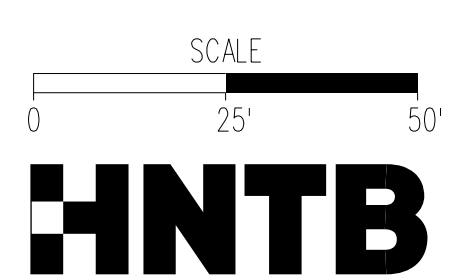
MATCHLINE, STA. 179+50.00, SEE SHEET 14

MATCHLINE, SEE SHEET 13(1)

LEGEND

—	PROPOSED RIGHT OF WAY
—	PROPOSED LIMITED ACCESS
- - -	EXISTING LIMITED ACCESS
- - - - -	EXISTING RIGHT OF WAY
- - - - -	EXISTING LIMITED ACCESS TO BE ABANDONED

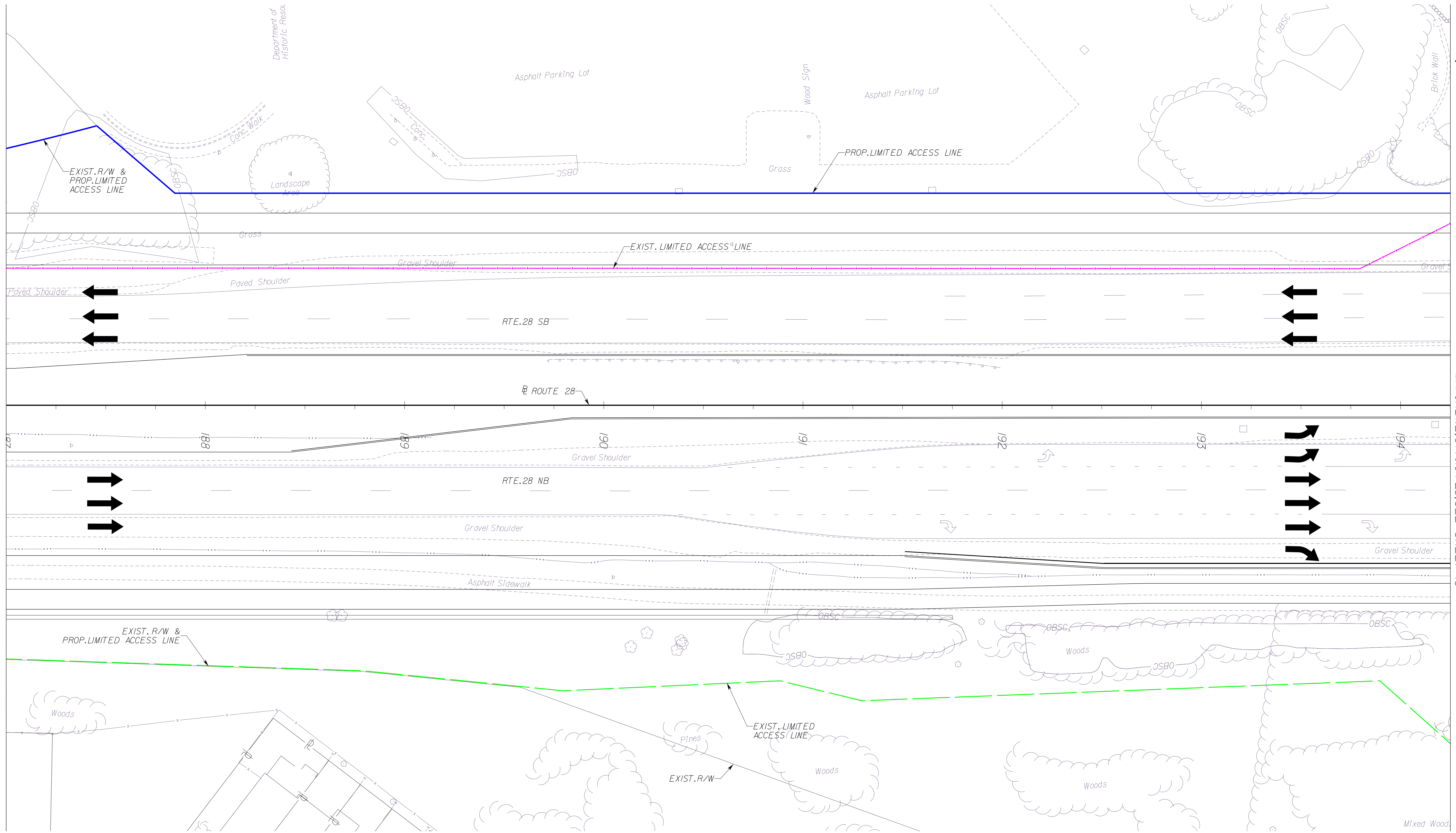
THESE PLANS ARE UNFINISHED AND UNAPPROVED AND ARE NOT TO BE USED FOR ANY TYPE OF CONSTRUCTION OR THE ACQUISITION OF RIGHT OF WAY.



EMERGENCY POLICE - FIRE - RESCUE 911 FAIRFAX COUNTY, VIRGINIA DEPARTMENT OF PUBLIC WORKS AND ENVIRONMENTAL SERVICES UTILITIES DESIGN & CONSTRUCTION DIVISION 12000 GOVERNMENT CENTER PARKWAY, SUITE 463 FAIRFAX, VA., 22035-0052				
OFFICE OF CAPITAL FACILITIES 703-324-5800		ROUTE 28 WIDENING PRINCE WILLIAM CO. LINE TO ROUTE 29 LIMITED ACCESS EXHIBIT STA. 172+50.00 TO STA. 179+50.00		
CONTRACT NO.		PROJECT NO.		
SCALE	DESIGNED BY: TW DRAFTED BY: DB CHECKED BY: SDF	SHEET 13	FUND #	
R E V I S I O N S	#	DESCRIPTION	BY	APPROVED DATE

MATCHLINE, STA. 187+00, SEE SHEET 14

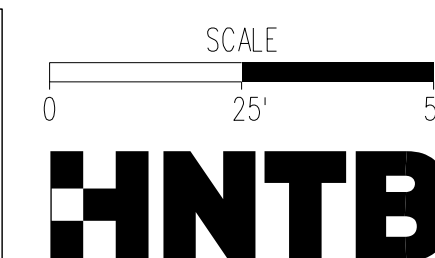
MATCHLINE, STA. 194+25, SEE SHEET 16



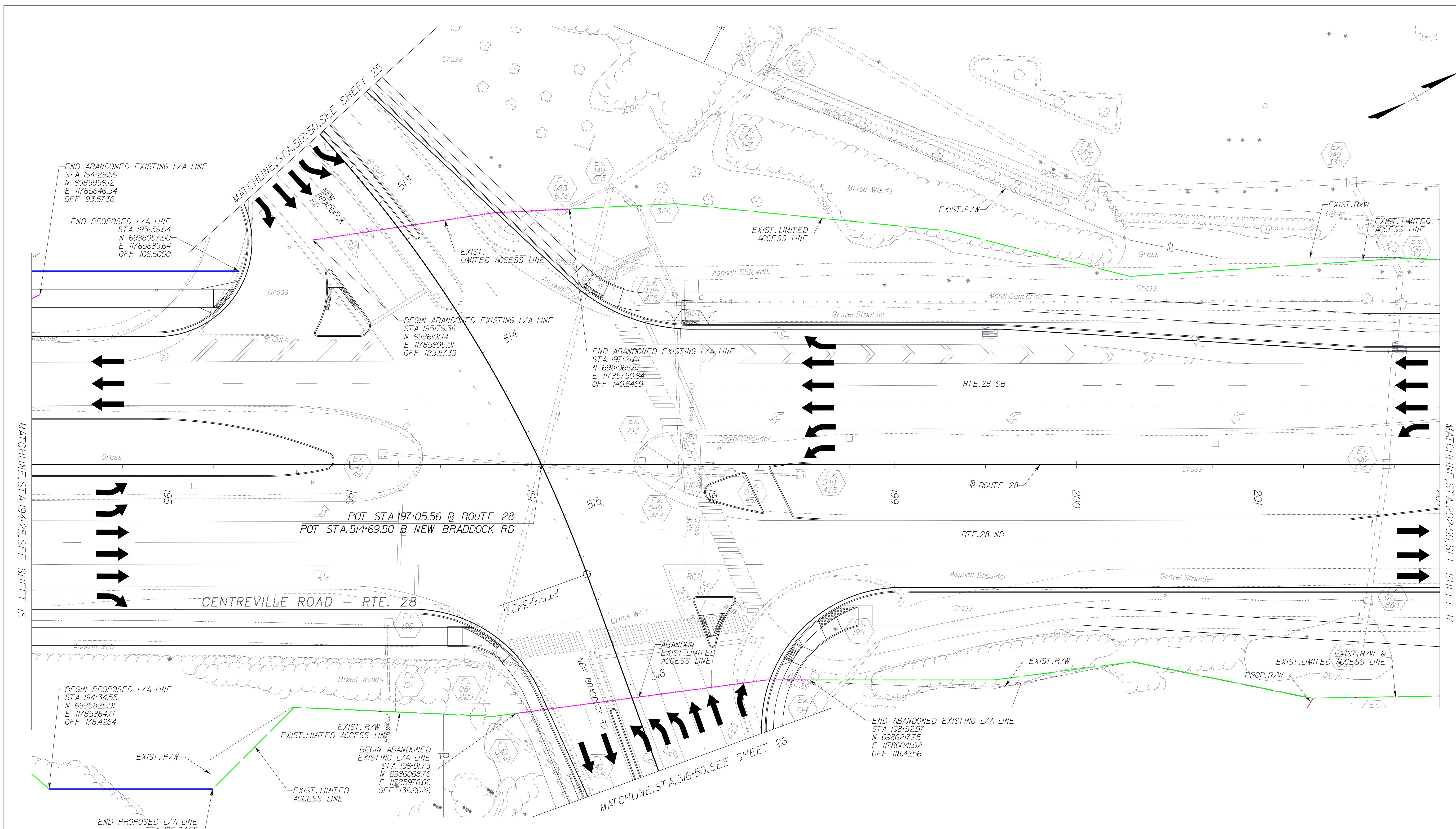
LEGEND

- PROPOSED RIGHT OF WAY
- PROPOSED LIMITED ACCESS
- - - EXISTING LIMITED ACCESS
- - - - - EXISTING RIGHT OF WAY
- - - - - EXISTING LIMITED ACCESS TO BE ABANDONED

THESE PLANS ARE UNFINISHED AND UNAPPROVED AND ARE NOT TO BE USED FOR ANY TYPE OF CONSTRUCTION OR THE ACQUISITION OF RIGHT OF WAY.



EMERGENCY POLICE - FIRE - RESCUE 911 FAIRFAX COUNTY, VIRGINIA DEPARTMENT OF PUBLIC WORKS AND ENVIRONMENTAL SERVICES UTILITIES DESIGN & CONSTRUCTION DIVISION 12000 GOVERNMENT CENTER PARKWAY, SUITE 463 FAIRFAX, VA., 22035-0052				
OFFICE OF CAPITAL FACILITIES 703-324-5800			ROUTE 28 WIDENING PRINCE WILLIAM CO. LINE TO ROUTE 29 LIMITED ACCESS EXHIBIT STA. 187+00.00 TO STA. 194+25.00	
CONTRACT NO.			PROJECT NO.	
SCALE		DESIGNED BY: TW	SHEET	15
DRAFTED BY: DB		CHECKED BY: SDF		FUND #
R	E	V	I	S
I	L	O	N	S
#	DESCRIPTION	BY	APPROVED	DATE

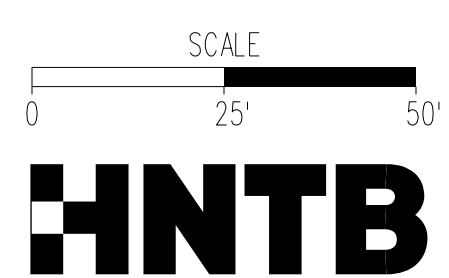


MATCHLINE, STA. 194+25.00, SEE SHEET 15

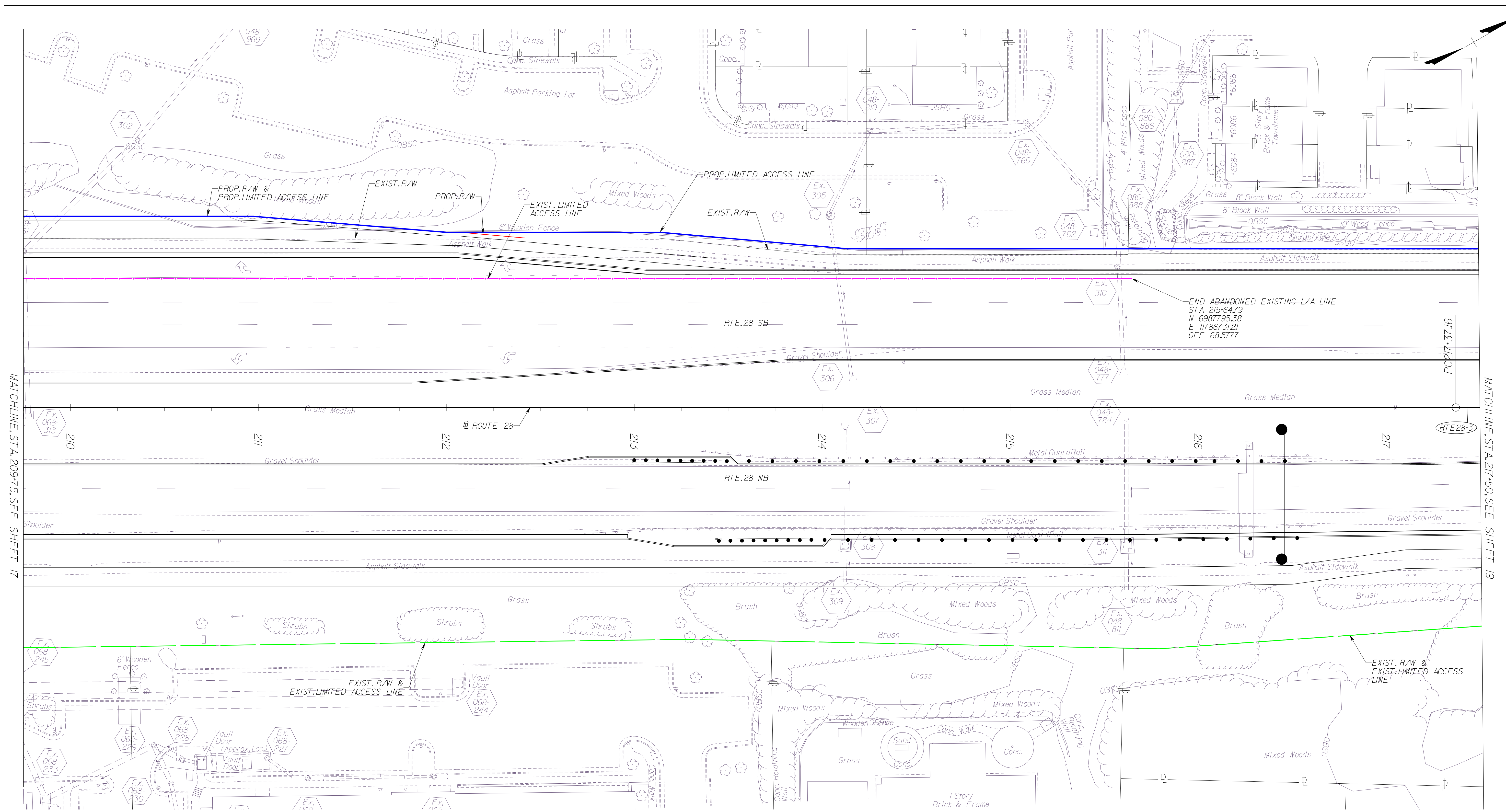
MATCHLINE, STA. 202+00.00, SEE SHEET 17

- LEGEND**
- PROPOSED RIGHT OF WAY
 - PROPOSED LIMITED ACCESS
 - EXISTING LIMITED ACCESS
 - EXISTING RIGHT OF WAY
 - EXISTING LIMITED ACCESS TO BE ABANDONED

THESE PLANS ARE UNFINISHED AND UNAPPROVED AND ARE NOT TO BE USED FOR ANY TYPE OF CONSTRUCTION OR THE ACQUISITION OF RIGHT OF WAY.



EMERGENCY POLICE - FIRE - RESCUE 911 FAIRFAX COUNTY, VIRGINIA DEPARTMENT OF PUBLIC WORKS AND ENVIRONMENTAL SERVICES UTILITIES DESIGN & CONSTRUCTION DIVISION 12000 GOVERNMENT CENTER PARKWAY, SUITE 463 FAIRFAX, VA., 22035-0052				
OFFICE OF CAPITAL FACILITIES 703-324-5800			ROUTE 28 WIDENING PRINCE WILLIAM CO. LINE TO ROUTE 29 LIMITED ACCESS EXHIBIT STA. 194+25.00 TO STA. 202+00.00	
CONTRACT NO.		PROJECT NO.		
SCALE	DESIGNED BY: TW	DRAFTED BY: DB	SHEET 16	
CHECKED BY: SDF				
FUND #				



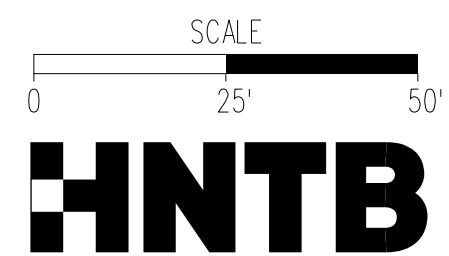
MATCHLINE: STA. 209+75. SEE SHEET 17

MATCHLINE: STA. 217+50. SEE SHEET 19

LEGEND

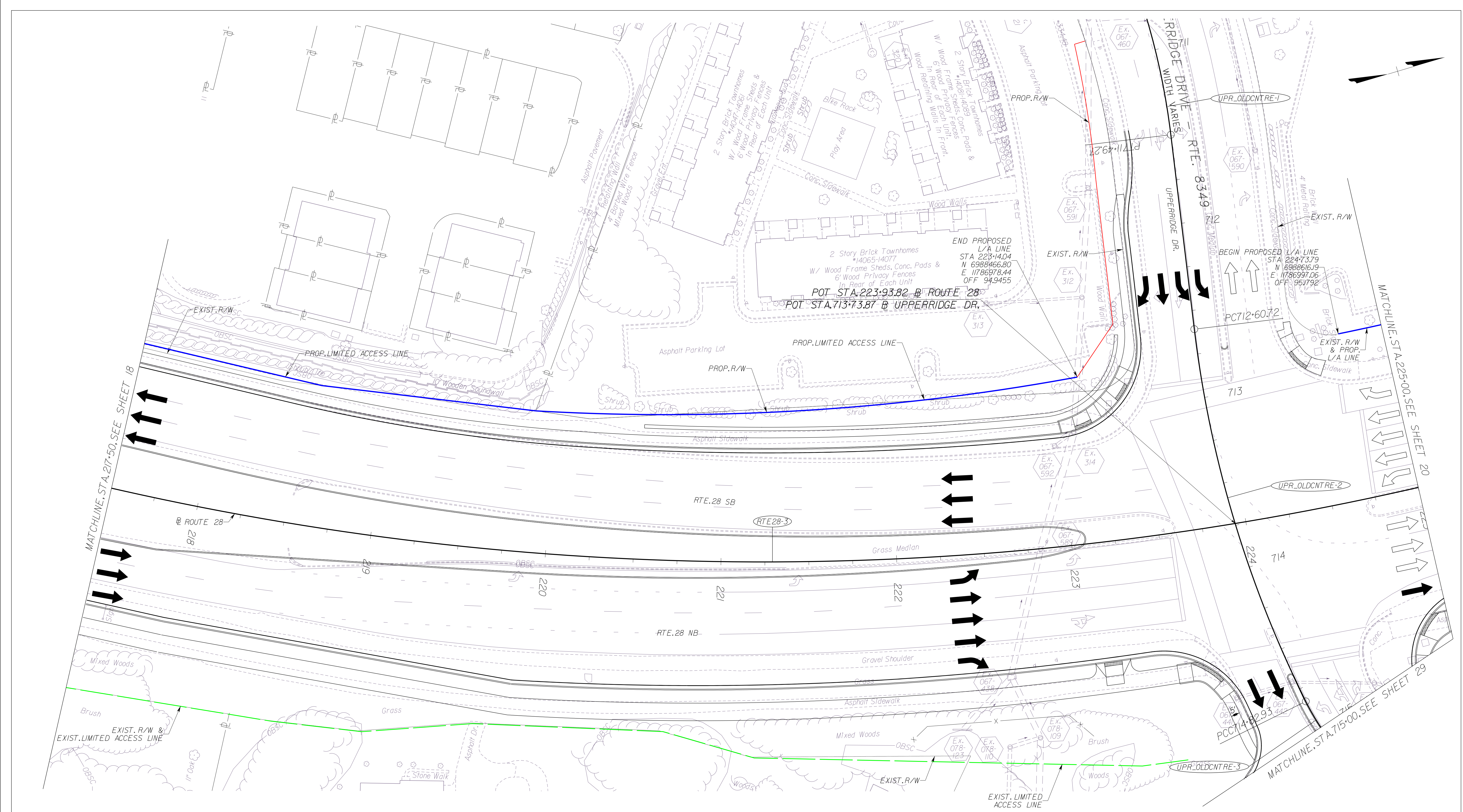
	PROPOSED RIGHT OF WAY
	PROPOSED LIMITED ACCESS
	EXISTING LIMITED ACCESS
	EXISTING RIGHT OF WAY
	EXISTING LIMITED ACCESS TO BE ABANDONED

THESE PLANS ARE UNFINISHED AND UNAPPROVED AND ARE NOT TO BE USED FOR ANY TYPE OF CONSTRUCTION OR THE ACQUISITION OF RIGHT OF WAY.



EMERGENCY POLICE - FIRE - RESCUE 911 FAIRFAX COUNTY, VIRGINIA DEPARTMENT OF PUBLIC WORKS AND ENVIRONMENTAL SERVICES UTILITIES DESIGN & CONSTRUCTION DIVISION 12000 GOVERNMENT CENTER PARKWAY, SUITE 463 FAIRFAX, VA., 22035-0052				
OFFICE OF CAPITAL FACILITIES 703-324-5800				
ROUTE 28 WIDENING PRINCE WILLIAM CO. LINE TO ROUTE 29 LIMITED ACCESS EXHIBIT STA. 209+75.00 TO STA. 217+50.00				
CONTRACT NO.		PROJECT NO.		
SCALE	DESIGNED BY: TW	TW	SHEET	
	DRAFTED BY: DB	DB	18	
	CHECKED BY: SDF	SDF		
FUND #				

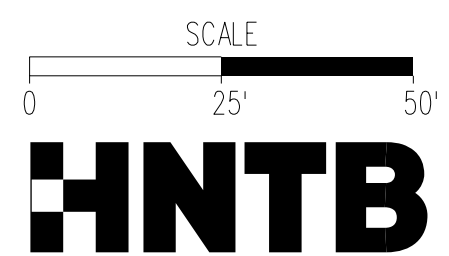
R	E	V	I	S	I	O	N	S
△#	DESCRIPTION	BY	APPROVED	DATE				



LEGEND

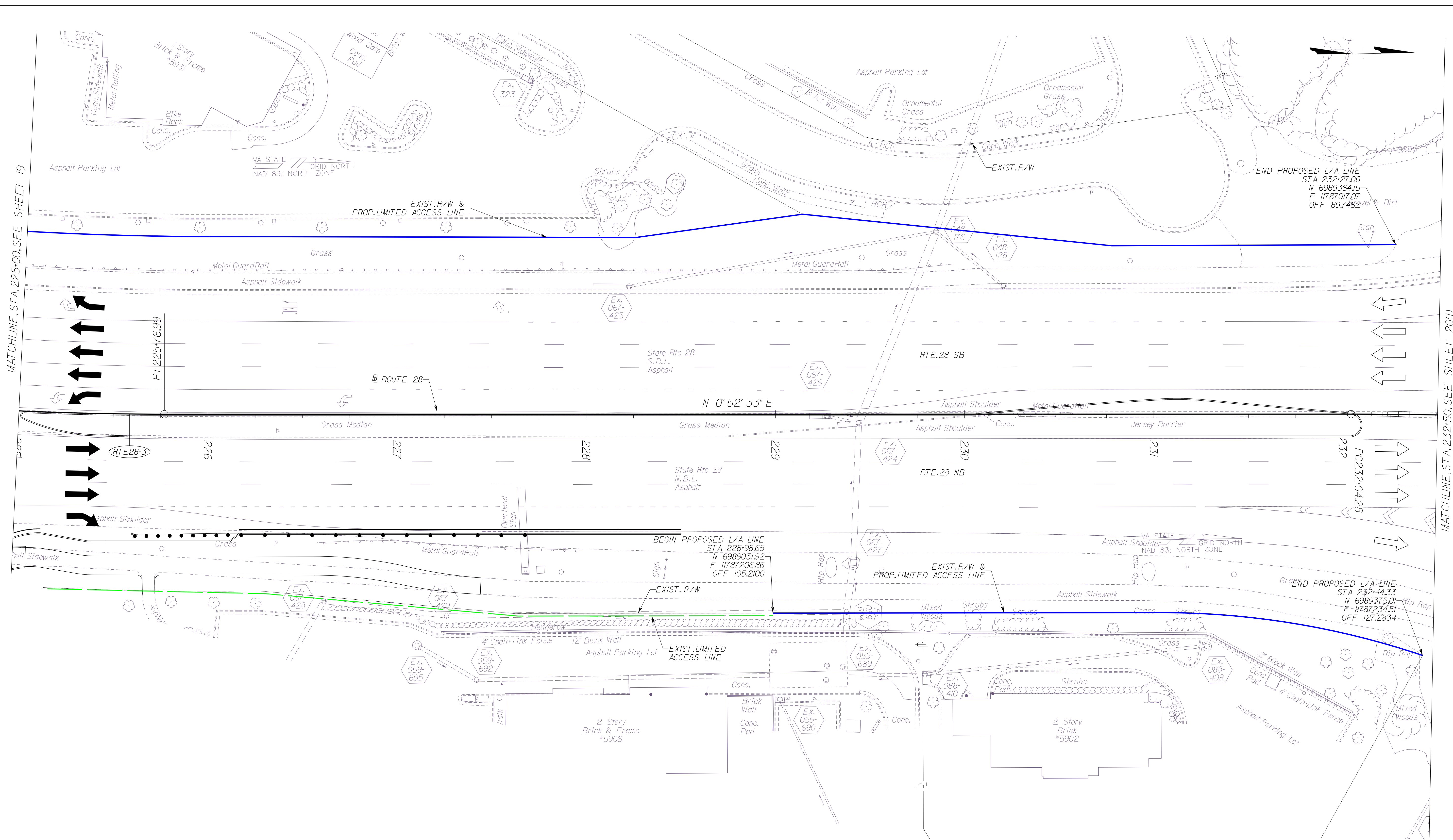
- PROPOSED RIGHT OF WAY
- PROPOSED LIMITED ACCESS
- - - EXISTING LIMITED ACCESS
- - - - - EXISTING RIGHT OF WAY

THESE PLANS ARE UNFINISHED AND UNAPPROVED AND ARE NOT TO BE USED FOR ANY TYPE OF CONSTRUCTION OR THE ACQUISITION OF RIGHT OF WAY.



EMERGENCY POLICE - FIRE - RESCUE 911
FAIRFAX COUNTY, VIRGINIA
 DEPARTMENT OF PUBLIC WORKS AND ENVIRONMENTAL SERVICES
 UTILITIES DESIGN & CONSTRUCTION DIVISION
 12000 GOVERNMENT CENTER PARKWAY, SUITE 463 FAIRFAX, VA., 22035-0052

OFFICE OF CAPITAL FACILITIES 703-324-5800	
ROUTE 28 WIDENING PRINCE WILLIAM CO. LINE TO ROUTE 29 LIMITED ACCESS EXHIBIT STA. 217+50.00 TO STA. 225+00.00	
CONTRACT NO.	PROJECT NO.
SCALE	DESIGNED BY: TW DRAFTED BY: DB CHECKED BY: SDF
SHEET	19
FUND #	



MATCHLINE, STA. 225+00, SEE SHEET 19

MATCHLINE, STA. 232+50, SEE SHEET 20(1)

LEGEND

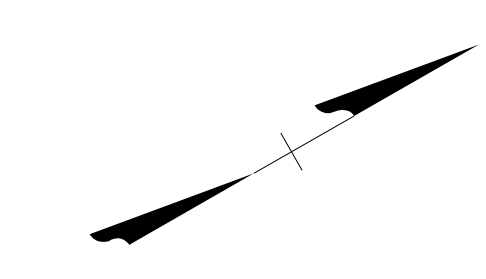
—	PROPOSED RIGHT OF WAY
—	PROPOSED LIMITED ACCESS
- - -	EXISTING LIMITED ACCESS
- - - - -	EXISTING RIGHT OF WAY

THESE PLANS ARE UNFINISHED AND UNAPPROVED AND ARE NOT TO BE USED FOR ANY TYPE OF CONSTRUCTION OR THE ACQUISITION OF RIGHT OF WAY.



EMERGENCY POLICE - FIRE - RESCUE 911 FAIRFAX COUNTY, VIRGINIA DEPARTMENT OF PUBLIC WORKS AND ENVIRONMENTAL SERVICES UTILITIES DESIGN & CONSTRUCTION DIVISION 12000 GOVERNMENT CENTER PARKWAY, SUITE 463 FAIRFAX, VA., 22035-0052				
		OFFICE OF CAPITAL FACILITIES 703-324-5800		
		ROUTE 28 WIDENING PRINCE WILLIAM CO. LINE TO ROUTE 29 LIMITED ACCESS EXHIBIT STA. 225+00.00 TO STA. 228+50.00		
		CONTRACT NO. PROJECT NO.		
		SCALE DESIGNED BY: TW SHEET DRAFTED BY: DB DB 20 CHECKED BY: SDF SDF		
		FUND #		

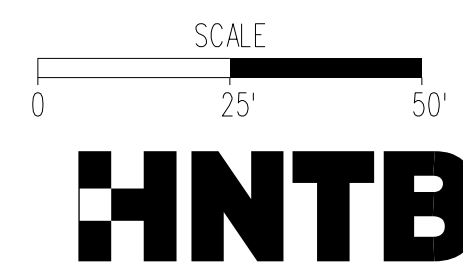
R				
E				
V				
I				
S				
I				
O				
N				
S	△#	DESCRIPTION	BY	APPROVED DATE



LEGEND

- PROPOSED RIGHT OF WAY
- PROPOSED LIMITED ACCESS
- - - EXISTING LIMITED ACCESS
- - - - - EXISTING RIGHT OF WAY

THESE PLANS ARE UNFINISHED AND UNAPPROVED AND ARE NOT TO BE USED FOR ANY TYPE OF CONSTRUCTION OR THE ACQUISITION OF RIGHT OF WAY.



EMERGENCY POLICE - FIRE - RESCUE 911 FAIRFAX COUNTY, VIRGINIA DEPARTMENT OF PUBLIC WORKS AND ENVIRONMENTAL SERVICES UTILITIES DESIGN & CONSTRUCTION DIVISION 12000 GOVERNMENT CENTER PARKWAY, SUITE 463 FAIRFAX, VA., 22035-0052				
OFFICE OF CAPITAL FACILITIES 703-324-5800		ROUTE 28 WIDENING PRINCE WILLIAM CO. LINE TO ROUTE 29 LIMITED ACCESS EXHIBIT STA. 715+00.00 TO STA. 721+34.00		
CONTRACT NO.		PROJECT NO.		
SCALE	DESIGNED BY: TW	SHEET		
	DRAFTED BY: DB	29		
	CHECKED BY: SDF			
FUND #				

R					
E					
V					
I					
S					
I					
O					
N					
S	Δ#	DESCRIPTION	BY	APPROVED	DATE

Proposed Limited Access Location			
Begin Station		End Station	
Sta		to Sta	
128+99.94	N 6980261.92 E 11782402.61 OFF 113.5485	136+52.00	N 6980950.70 E 11782760.84 OFF 103.5624
133+35.55	N 6980558.26 E 11782808.80 OFF 133.4382	133+85.55	N 6980601.62 E 11782833.70 OFF 133.4381
137+85.73	N 6981066.67 E 11782827.43 OFF 103.5627	138+35.73	N 6981110.04 E 11782852.32 OFF 103.5628
143+99.56	N 6981602.32 E 11783127.29 OFF 110.2305	144+49.56	N 6981643.60 E 11783155.80 OFF 106.0640
147+91.17	N 6981936.59 E 11783331.59 OFF 99.5000	149+59.53	N 6982082.59 E 11783415.42 OFF 99.5000
149+99.18	N 6982116.98 E 11783435.17 OFF 99.5000	151+61.24	N 6982257.52 E 11783515.86 OFF 99.5000
156+99.55	N 6982605.87 E 11783990.25 OFF 138.4336	157+49.55	N 6982649.24 E 11784015.14 OFF 138.4335
157+20.80	N 6982742.77 E 11783794.49 OFF 99.5000	159+37.47	N 6982931.51 E 11783900.92 OFF 101.1718
160+29.55	N 6983014.15 E 11783941.91 OFF 106.7756	167+60.85	N 6983644.72 E 11784312.36 OFF 99.5000
167+86.02	N 6983666.55 E 11784324.89 OFF 99.5000	195+39.04	N 6986057.50 E 11785689.64 OFF 106.5000
176+44.55	N 6984297.59 E 11784950.05 OFF 128.4298	176+95.35	N 6984341.64 E 11784975.34 OFF 128.4298
185+17.55	N 6985057.16 E 11785380.41 OFF 123.4282	185+67.55	N 6985100.52 E 11785405.30 OFF 123.4281
194+34.55	N 6985825.01 E 11785884.71 OFF 178.4264	195+24.55	N 6985903.06 E 11785929.52 OFF 178.4262
204+57.28	N 6986850.58 E 11786152.50 OFF 100.0000	207+20.99	N 6987081.55 E 11786279.85 OFF 104.5712
209+28.81	N 6987260.36 E 11786385.77 OFF 101.7471	223+14.04	N 6988466.80 E 11786978.44 OFF 94.9455
224+73.79	N 6988616.19 E 11786997.06 OFF 95.1792	232+27.06	N 6989364.15 E 11787017.07 OFF 89.7462
228+98.65	N 6989031.92 E 11787206.86 OFF 105.2100	232+44.33	N 6989375.01 E 11787234.51 OFF 127.2834

Existing Limited Access Abandonment			
Begin Station		End Station	
Sta		to Sta	
128+99.94	N 6980261.92 E 11782402.61 OFF 113.5485	136+52.00	N 6980950.70 E 11782760.84 OFF 103.5624
137+55.52	N 6981066.67 E 11783004.91 OFF 118.4374	137+91.16	N 6980960.85 E 11783022.66 OFF 118.4373
138+41.16	N 6980996.74 E 11783060.56 OFF 133.4372	138+64.54	N 6981066.67 E 11783072.74 OFF 134.0577
147+91.17	N 6981936.59 E 11783331.59 OFF 99.5000	149+58.56	N 6982066.34 E 11783441.77 OFF 68.5649
150+08.56	N 6982109.71 E 11783466.67 OFF 68.5650	151+61.24	N 6982257.52 E 11783515.86 OFF 99.5000
157+20.80	N 6982742.77 E 11783794.49 OFF 99.5000	159+29.56	N 6982908.41 E 11783925.26 OFF 68.5668
160+29.56	N 6982995.13 E 11783975.05 OFF 68.5670	182+28.07	N 6984901.72 E 11785069.76 OFF 68.5713
182+78.07	N 6984945.08 E 11785094.65 OFF 68.5714	194+29.56	N 6985956.12 E 11785646.34 OFF 93.5736
195+79.56	N 6986101.14 E 11785695.01 OFF 123.5739	197+21.01	N 6981066.67 E 11785750.64 OFF 140.6469
196+91.73	N 6986068.76 E 11785976.66 OFF 136.8026	198+52.97	N 6986217.75 E 11786041.02 OFF 118.4256
204+57.27	N 6986850.41 E 11786152.27 OFF 99.6902	208+04.56	N 6987136.09 E 11786352.67 OFF 68.5763
208+54.56	N 6987179.45 E 11786377.57 OFF 68.5764	215+64.79	N 6987795.38 E 11786731.21 OFF 68.5777

THESE PLANS ARE UNFINISHED AND UNAPPROVED AND ARE NOT TO BE USED FOR ANY TYPE OF CONSTRUCTION OR THE ACQUISITION OF RIGHT OF WAY.



EMERGENCY POLICE - FIRE - RESCUE 911					
FAIRFAX COUNTY, VIRGINIA					
DEPARTMENT OF PUBLIC WORKS AND ENVIRONMENTAL SERVICES					
UTILITIES DESIGN & CONSTRUCTION DIVISION					
12000 GOVERNMENT CENTER PARKWAY, SUITE 463 FAIRFAX, VA., 22035-0052					
OFFICE OF CAPITAL FACILITIES 703-324-5800					
ROUTE 28 WIDENING PRINCE WILLIAM CO. LINE TO ROUTE 29 LIMITED ACCESS EXHIBIT LIMITED ACCESS LINE SUMMARY					
CONTRACT NO.			PROJECT NO.		
SCALE	DESIGNED BY: TW	TW	SHEET		
	DRAFTED BY: DB	DB	30		
	CHECKED BY: SDF	SDF			
FUND #					

R	E	V	J	S	I	O	N	S
△#	DESCRIPTION	BY	APPROVED	DATE				