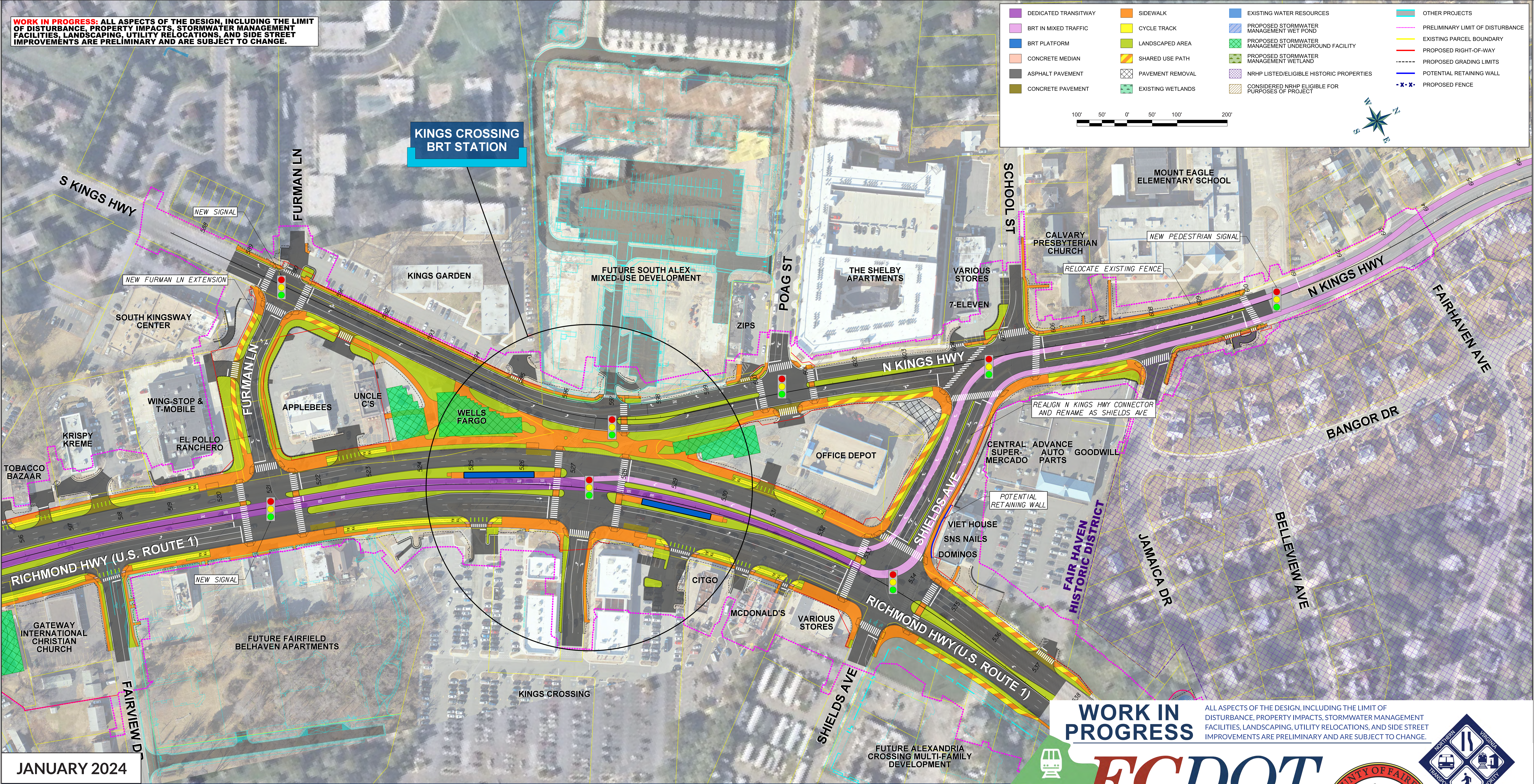


**WORK IN PROGRESS: ALL ASPECTS OF THE DESIGN, INCLUDING THE LIMIT OF DISTURBANCE, PROPERTY IMPACTS, STORMWATER MANAGEMENT FACILITIES, LANDSCAPING, UTILITY RELOCATIONS, AND SIDE STREET IMPROVEMENTS ARE PRELIMINARY AND ARE SUBJECT TO CHANGE.**

DEDICATED TRANSITWAY	SIDEWALK	EXISTING WATER RESOURCES	OTHER PROJECTS
BRT IN MIXED TRAFFIC	CYCLE TRACK	PROPOSED STORMWATER MANAGEMENT WET POND	PRELIMINARY LIMIT OF DISTURBANCE
BRT PLATFORM	LANDSCAPED AREA	PROPOSED STORMWATER MANAGEMENT UNDERGROUND FACILITY	EXISTING PARCEL BOUNDARY
CONCRETE MEDIAN	SHARED USE PATH	PROPOSED STORMWATER MANAGEMENT WETLAND	PROPOSED RIGHT-OF-WAY
ASPHALT PAVEMENT	PAVEMENT REMOVAL	NRHP LISTED/ELIGIBLE HISTORIC PROPERTIES	PROPOSED GRADING LIMITS
CONCRETE PAVEMENT	EXISTING WETLANDS	CONSIDERED NRHP ELIGIBLE FOR PURPOSES OF PROJECT	POTENTIAL RETAINING WALL
			PROPOSED FENCE

100' 50' 0' 50' 100' 200'



**WORK IN PROGRESS**

ALL ASPECTS OF THE DESIGN, INCLUDING THE LIMIT OF DISTURBANCE, PROPERTY IMPACTS, STORMWATER MANAGEMENT FACILITIES, LANDSCAPING, UTILITY RELOCATIONS, AND SIDE STREET IMPROVEMENTS ARE PRELIMINARY AND ARE SUBJECT TO CHANGE.

JANUARY 2024

**WORK IN PROGRESS**

# RICHMOND HIGHWAY Bus Rapid Transit Study

ALL ASPECTS OF THE DESIGN, INCLUDING THE LIMIT OF DISTURBANCE, PROPERTY IMPACTS, STORMWATER MANAGEMENT FACILITIES, LANDSCAPING, UTILITY RELOCATIONS, AND SIDE STREET IMPROVEMENTS ARE PRELIMINARY AND ARE SUBJECT TO CHANGE.

SHEET No. 6  
**KINGS HIGHWAY INTERSECTION IMPROVEMENTS**



# FCDOT

*Serving Fairfax County for 30 Years and More*

