

FAIRFAX
COUNTY
1981 PROFILE

OFFICE OF RESEARCH AND STATISTICS
MANAGEMENT SERVICES BRANCH

COUNTY OF FAIRFAX

*** BOARD OF SUPERVISORS ***

Mr. John F. Herrity
Chairman

Mrs. Martha V. Pennino
Vice-Chairman
(Centreville District)

Mr. Joseph Alexander
Lee District

Mrs. Audrey Moore
Annandale District

Mr. Thomas M. Davis
Mason District

Mr. James M. Scott
Providence District

Ms. Sandra L. Duckworth
Mt. Vernon District

Mrs. Marie B. Travesky
Springfield District

Ms. Nancy K. Falck
Dranesville District

J. Hamilton Lambert
County Executive

James P. McDonald
Deputy County Executive for
Management and Budget

Mary Elizabeth Noe, Director
Office of Research and Statistics

4100 Chain Bridge Road
Fairfax, Virginia 22030



FAIRFAX COUNTY PROFILE

Compiled by:

Ursula R. Edmondson, Management Analyst
Management Services Branch
Office of Research and Statistics

1981

Price: \$2.25

For Sale By:

Communications Division
(Publications, Sales, and Distribution)

The Massey Building
4100 Chain Bridge Road
Fairfax, Virginia 22030

703-691-2974

Price: \$2.25

Inquiries concerning the Fairfax County Profile should be directed to:

The Office of Research and Statistics

Management Services Branch

The Massey Building

4100 Chain Bridge Road

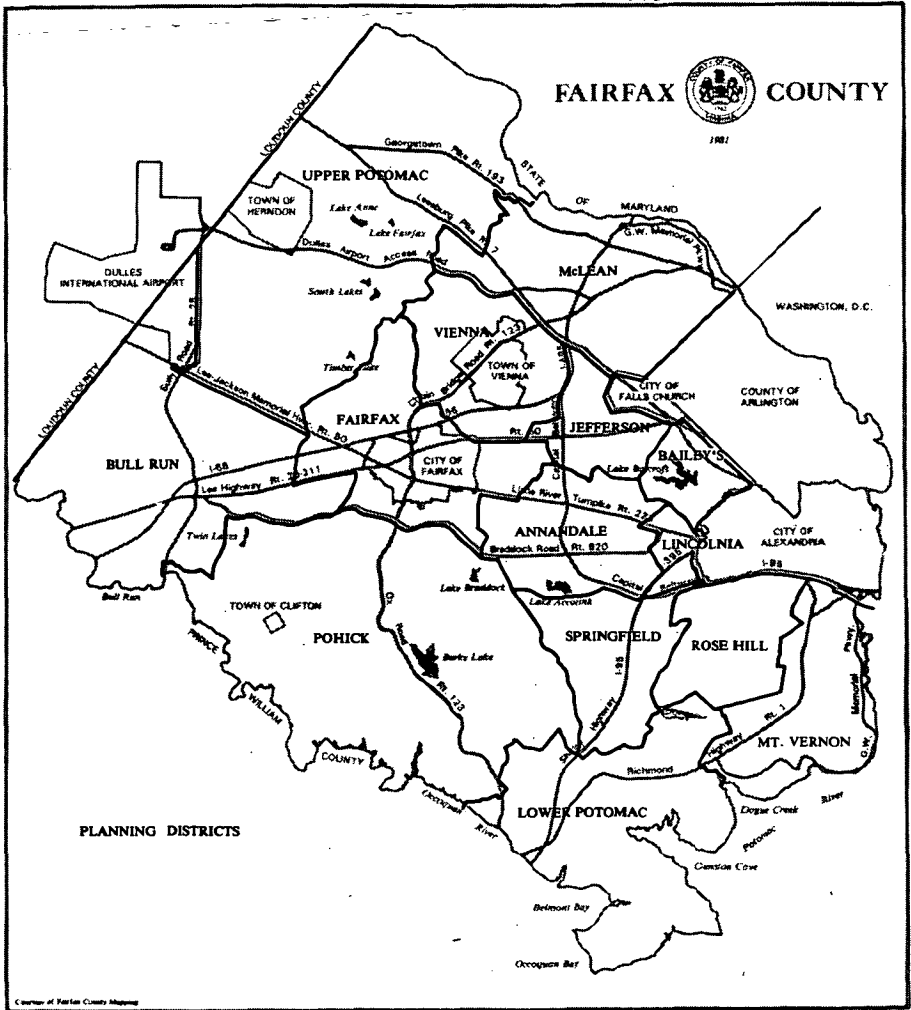
Fairfax, Virginia 22030

TABLE OF CONTENTS

	<u>Section</u>
Maps and Natural Features	I
Population	II
Education	III
Employment	IV
Income	V
Residential Characteristics	VI
Nonresidential Characteristics	VII
Revenues and Expenditures	VIII
Government Services	IX
Glossary	X
Index	XI

I MAPS AND NATURAL FEATURES

PLANNING DISTRICTS IN FAIRFAX COUNTY



LAND AREA* BY JURISDICTION

Washington Metropolitan Region

Jurisdiction	Number	Square Miles	Percent
Fairfax County, Virginia	399		14.1%
Alexandria City, Virginia	15		0.5
Arlington County, Virginia	26		0.9
Fairfax City, Virginia	6		0.2
Falls Church City, Virginia	2		0.1
Loudoun County, Virginia	517		18.3
Manassas City, Virginia	8		0.3
Manassas Park City, Virginia	2		0.1
Prince William County, Virginia	347		12.3
Charles County, Maryland	459		16.3
Montgomery County, Maryland	495		17.5
Prince George's County, Maryland	485		17.2
District of Columbia	<u>61</u>		<u>2.2</u>
Regional Total	2,822		100.0%

*Includes dry land and land temporarily or partially covered by water; and lakes, reservoirs, and ponds less than 40 acres in area.

Source: U.S. Bureau of the Census, County and City Data Book, 1977.

LAND AREA* BY SUPERVISOR DISTRICT

Fairfax County

Supervisor District	Square Miles			
	Gross Area	Water Area	Net Area	
			Number	Percent
Annandale	24		24	6.0%
Centreville ¹	62		62	15.5
Dranesville ²	69		69	17.3
Lee	35		35	8.8
Mason	15		15	3.8
Mount Vernon	56	10	46	11.5
Providence	21		21	5.3
Springfield ³	<u>128</u>	<u>1</u>	<u>127</u>	<u>31.8</u>
County Total	410	11	399	100.0%

*Does not include the .08 square miles of land within the City of Fairfax on which the Fairfax County governmental center is located.

¹Includes the Town of Vienna.

²Includes the Town of Herndon.

³Includes the Town of Clifton.

Source: Fairfax County Division of Mapping.

LAND AREA* BY PLANNING DISTRICTS

Fairfax County

Planning District	Square Miles			
	Gross Area	Water Area	Net Area	
			Number	Percent
Annandale	19		19	4.8%
Baileys	6		6	1.5
Bull Run	50		50	12.5
Fairfax	21		21	5.3
Jefferson	9		9	2.3
Lincolnia	3		3	0.8
Lower Potomac	47	7	40	10.0
McLean	31		31	7.8
Mount Vernon	26	2	24	6.0
Pohick ¹	76	2	74	18.4
Rose Hill	14		14	3.5
Springfield	16		16	4.0
Upper Potomac ²	73		73	18.3
Vienna ³	<u>19</u>	<u>—</u>	<u>19</u>	<u>4.8</u>
County Total	410	11	399	100.0%

*Does not include the .08 square miles of land within the City of Fairfax on which the Fairfax County governmental center is located.

¹Includes the Town of Clifton.

²Includes the Town of Herndon.

³Includes the Town of Vienna.

Source: Fairfax County Division of Mapping.

NORMAL MONTHLY TEMPERATURE *

Washington, D.C. Area

Month	Average Temperature	Maximum Temperature**	Minimum Temperature***
January	35.6	43.5	27.7
February	37.3	46.0	28.6
March	45.1	55.0	35.2
April	56.4	67.1	45.7
May	66.2	76.6	55.7
June	74.6	84.6	64.6
July	78.7	88.2	69.1
August	77.1	86.6	67.6
September	70.6	80.2	61.0
October	59.8	69.8	49.7
November	48.0	57.2	38.8
December	37.4	45.2	29.5
Annual	57.3	66.7	47.8

*Based on standard 30 year period, 1941 to 1970.

**Maximum temperature is the average of the highest daily temperatures reached during the period shown.

***Minimum temperature is the average of the lowest daily temperatures reached during the period shown.

Source: U.S. National Oceanic and Atmospheric Administration,
Local Climatological Data.

HIGHEST AND LOWEST TEMPERATURE OF RECORD *

Washington, D.C. Area

Month	Highest Temperature**	Lowest Temperature**
January	75	3
February	77	4
March	86	16
April	91	27
May	97	36
June	100	47
July	101	56
August	99	51
September	96	39
October	91	29
November	86	20
December	74	10
Annual	101	3

*Data through 1974.

**In fahrenheit degrees.

Source: U.S. National Oceanic and Atmospheric Administration,
Local Climatological Data.

NORMAL MONTHLY AND ANNUAL PRECIPITATION*

WASHINGTON, D.C. AREA

Month	Normal Precipitation (in inches)
January	2.62
February	2.45
March	3.33
April	2.86
May	3.68
June	3.48
July	4.12
August	4.67
September	3.08
October	2.66
November	2.90
December	3.04
Annual	38.89

* Based on standard 30 year period, 1941 to 1970.

Source: U.S. National Oceanic and Atmospheric Administration,
Local Climatological Data.

II POPULATION

SUMMARY OF ACTUAL AND PROJECTED POPULATION GROWTH

Fairfax County, 1900 to 2000

Year	Total Population	Average Annual Growth Rate For Preceding Period	Average Annual Population Increase For Preceding Period
1900	18,580	---	---
1910	20,536	1.0%	196
1920	21,943	0.7	141
1930	25,264	1.4	332
1940	40,929	4.9	1,566
1950	98,557	9.2	5,763
1960	248,897	9.7	15,034
1970	454,275	6.2	20,538
1980	596,901	2.8	14,263
1985	675,638	2.5	15,744
1990	726,646	1.5	10,202
1995	775,768	1.3	9,824
2000	813,259	0.9	7,498

Sources: 1900-1980 -- U.S. Bureau of the Census.
1985-2000 -- Fairfax County Office of Research and Statistics.

POPULATION GROWTH
Fairfax County, 1970 to 1981

Year	Total Population	Annual Growth Rate	Annual Population Increase
1970	454,275	---	---
1971	470,600	3.6%	16,300
1972	487,600	3.6	17,000
1973	505,700	3.7	18,100
1974	522,200	3.3	16,500
1975	537,200	2.9	15,000
1976	554,500	3.2	17,300
1977	562,800	1.5	8,300
1978	571,000	1.5	8,200
1979	584,200	2.3	13,200
1980	596,901	2.2	12,701
1981	612,600	2.6	15,700

Source: 1970 and 1980 — U.S. Census, Department of Commerce. Data obtained from the Fairfax County Office of Research and Statistics for the years 1971 to 1979 and 1981.

CURRENT POPULATION ESTIMATES AND DENSITIES

BY SUPERVISOR DISTRICT

Fairfax County, 1981

Supervisor District	Estimated Population	Persons Per Acre	Persons Per Square Mile
Centreville ¹	81,700	2.2	1,407
Dranesville ²	83,500	2.1	1,353
Annandale	81,200	6.0	3,832
Lee ³	65,900	3.1	1,961
Mason	60,400	7.4	4,731
Mount Vernon ⁴	63,900	2.4	1,565
Providence	70,500	5.8	3,722
Springfield ⁵	105,500	1.4	876
County Total ⁶	612,600	2.6	1,667

¹Includes the Town of Vienna.

²Includes the Town of Herndon.

³Includes the part of Fort Belvoir in the Lee District.

⁴Includes Lorton and the part of Fort Belvoir in the Mount Vernon District.

⁵Includes the Town of Clifton.

⁶Excludes the cities of Fairfax and Falls Church.

Source: Fairfax County Office of Research and Statistics.

CURRENT POPULATION ESTIMATES AND DENSITIES

BY PLANNING DISTRICT

Fairfax County, January 1981

Planning District	Estimated Population	Persons Per Acre	Persons Per Square Mile
Annandale	66,400	6.5	4,184
Baileys	30,800	8.9	5,713
Bull Run	23,800	0.8	498
Fairfax	32,700	2.8	1,787
Jefferson	37,900	7.7	4,898
Lincolnia	10,000	5.8	3,723
Lower Potomac ¹	17,200	0.7	466
McLean	53,400	3.2	2,061
Mount Vernon	81,600	6.9	4,428
Pohick ²	79,400	1.7	1,089
Rose Hill	22,700	2.7	1,747
Springfield	32,400	3.6	2,277
Upper Potomac ³	74,200	1.7	1,063
Vienna ⁴	50,100	4.2	2,709
County Total ⁵	612,600	2.6	1,667

¹Includes Fort Belvoir.

²Includes the Town of Clifton.

³Includes the Town of Herndon.

⁴Includes the Town of Vienna.

⁵Excludes the Cities of Fairfax and Falls Church.

Source: Fairfax County Office of Research and Statistics.

ACTUAL AND PROJECTED POPULATION BY PLANNING DISTRICT

Fairfax County, 1970 to 2000.

Planning District	1970	1980	1985	1990	1995	2000
Annandale	62,635	66,822	67,445	65,369	63,303	60,230
Baileys	30,112	30,290	31,327	30,811	29,786	28,600
Bull Run	14,006	23,664	38,656	54,508	69,095	80,280
Fairfax	22,889	32,272	38,911	42,629	44,567	45,215
Jefferson	40,989	38,152	40,199	39,666	39,951	38,892
Lincolnia	11,123	9,622	10,492	10,909	11,497	11,669
Lower Potomac	21,497	16,726	19,962	23,262	25,941	28,971
McLean	46,866	54,340	55,464	56,259	57,221	58,028
Mount Vernon	76,730	79,533	82,395	82,672	82,084	81,342
Pohick	14,902	71,543	89,327	99,744	108,095	115,090
Rose Hill	21,859	23,246	26,531	31,970	38,533	45,072
Springfield	32,970	31,262	35,448	36,499	39,282	42,600
Upper Potomac	20,062	71,039	87,456	98,853	110,762	120,462
Vienna	38,381	48,390	52,025	53,495	55,651	56,808
County Total	455,021	596,901	675,638	726,646	775,768	813,259

Sources: 1970 and 1980 — U.S. Bureau of the Census.
 1985 - 2000 — Fairfax County Office of Research and Statistics.

CENSUS POPULATION BY AREA JURISDICTION

1970 and 1980

Jurisdiction	1970	1980	Change: 1970 to 1980	
			Number	Percent
Fairfax County	454,275	596,901	142,626	31.4%
Arlington County	174,284	152,599	-21,685	-12.4
Alexandria	110,927	103,217	-7,710	-7.9
Loudoun County	37,150	57,427	20,277	54.6
Prince William County*	111,102	166,665	55,563	40.0
Falls Church	10,772	9,515	-1,257	-11.7
Fairfax City	22,727	19,390	-3,337	-14.7
Montgomery County	522,809	579,053	56,244	10.8
Prince George's County	661,719	665,071	3,352	0.5
District of Columbia	<u>756,668</u>	<u>637,651</u>	<u>-119,017</u>	-15.7
Total	2,862,433	2,987,489	125,056	4.4%

*Includes independent Cities of Manassas and Manassas Park.

Sources: 1970, 1980 U.S. Census.

SEX COMPOSITION
Fairfax County, 1960 to 1995

Year	Percent Male	Percent Female
1960	52.4%	47.6%
1970	50.0	50.0
1975	49.1	50.9
1980	48.6	51.4
1985	47.4	52.6
1990	47.2	52.8
1995	47.4	52.6

Source: U.S. Bureau of the Census, Census of Population, 1960 and 1970.
Washington Center for Metropolitan Studies, Trends Alert, 1975; unpublished projections by Sex, 1985 to 1995.
Fairfax County Office of Research and Statistics, 1980.

PERCENTAGE DISTRIBUTION OF POPULATION BY RACE

Fairfax County, 1970 and 1980

Race or Ethnicity	<u>1970</u>		<u>1980</u>	
	Number	Percent	Number	Percent
White	424,114	93.2%	509,790	85.4%
Black	15,859	3.5	34,994	5.9
Spanish	11,623	2.6	19,535	3.3
Asian	1,833	0.4	22,725	3.8
American Indian	427	0.1	1,235	0.2
Other	<u>1,165</u>	<u>0.2</u>	<u>8,622</u>	<u>1.4</u>
Total	455,021*	100.0%	596,901	100.0%

*The Census Bureau revised the County's 1970 population total to 454,275 in September 1975. However, population breakdowns were not made available based on the revised total.

Sources: 1970 and 1980 U.S. Census.

PERCENTAGE DISTRIBUTION OF RACIAL COMPOSITION

BY PLANNING DISTRICT*

Fairfax County, 1970

Planning District	Percentage			Total
	White	Black	Other**	
Annandale	99.1%	0.3%	0.6%	100.0%
Baileys	92.7	6.2	1.1	100.0
Bull Run	96.2	3.2	0.6	100.0
Fairfax	98.5	1.4	0.1	100.0
Jefferson	94.0	5.3	0.7	100.0
Lincolnia	96.5	2.6	0.9	100.0
Lower Potomac	76.4	18.2	5.4	100.0
McLean	98.0	1.1	0.9	100.0
Mount Vernon	95.7	3.5	0.8	100.0
Pohick ¹	95.4	4.2	0.4	100.0
Rose Hill	98.9	0.5	0.6	100.0
Springfield	98.5	0.2	1.3	100.0
Upper Potomac ²	90.8	4.3	4.9	100.0
Vienna ³	96.8	2.6	0.6	100.0
County Total	95.8%	3.5%	0.7%	100.0%

*Estimates are derived from data provided by census tracts.

**Includes category of not reported.

¹Includes the Town of Clifton.

²Includes the Town of Herndon.

³Includes the Town of Vienna.

Source: U.S. Bureau of the Census, U.S. Census of Population and Housing: 1970, Census Tracts, PHC(1)-226.

POPULATION AGE DISTRIBUTION

Fairfax County, 1960, 1970, and 1980

Age Group	1960		1970		1980*	
	Number	Percent	Number	Percent	Number	Percent
Under 5	34,475	13.8%	40,726	9.0%	35,814	6.0%
5 - 9	33,902	13.6	52,113	11.4	45,961	7.7
10 - 14	27,034	10.9	56,178	12.3	54,318	9.1
15 - 19	15,881	6.4	42,934	9.4	60,884	10.2
20 - 24	13,136	5.3	34,269	7.5	43,574	7.3
25 - 34	36,708	14.7	64,926	14.3	105,651	17.7
35 - 44	47,981	19.3	67,648	14.9	99,086	16.6
45 - 54	22,834	9.1	59,141	13.0	75,807	12.7
55 - 64	9,686	3.8	23,412	5.2	48,349	8.1
65 and Over	<u>7,260</u>	<u>2.9</u>	<u>13,674</u>	<u>3.0</u>	<u>27,457</u>	<u>4.6</u>
Total	248,897	100.0%	455,021	100.0%	596,901	100.0%
Median Age	25.0 years		25.2 years		30.7 years**	

*Numbers derived from the application of 1980 Household Survey age distributions to 1980 U.S. Census population.

**Based on data from Fairfax County 1980 Household Survey.

Sources: U.S. Bureau of the Census, U.S. Census of Population 1960, 1970, and 1980. General Population Characteristics, Virginia, PC(1)-B48. 1960 Census figures are corrected and do not include Fairfax City. Fairfax County Office of Research and Statistics, 1980 Household Survey.

COMPARISONS OF SELECTED DEMOGRAPHIC CHARACTERISTICS, 1970

FAIRFAX COUNTY, VIRGINIA, UNITED STATES, AND REGIONS

Demographic Characteristic	Fairfax County	Virginia	U.S.A.	North-East	North Central	South	West
<u>Education:</u>							
Median School Years	12.9	11.7	12.1	12.1	12.1	11.3	12.4
% High School Graduates	78.8	47.8	52.4	53.0	53.7	45.1	62.3
% College Graduates	30.3	12.3	10.7	11.2	9.6	9.8	13.2
<u>Employment:</u>							
% in Civilian Labor Force	56.6	54.7	56.7	57.7	58.2	54.8	56.6
White Collar	75.2	49.0	48.2	51.3	45.8	45.4	52.7
Blue Collar	17.2	36.2	35.9	35.6	37.2	37.7	31.1
Agriculture	0.2	2.7	3.1	1.0	4.4	3.7	3.1
Service	7.4	12.1	12.8	12.2	12.7	13.1	13.2
<u>Income:</u>							
Median Income	\$15,707	\$ 9,049	\$ 9,586	\$10,537	\$10,134	\$ 8,075	\$10,263
% Below Poverty	3.5	12.3	10.7	7.6	8.3	16.3	8.9
<u>% Earning:</u>							
Less than \$2,000	2.2	6.6	5.9	4.1	4.7	8.9	4.8
Less than \$5,000	6.2	22.0	20.3	15.6	17.3	27.9	17.9
Over \$25,000	14.6	4.7	4.6	5.8	4.4	3.4	5.3
<u>Per Capita Income</u>							
1973	\$ 6,488	\$ 4,886	\$ 5,041	\$ 5,435	\$ 5,263	\$ 4,447	\$ 5,225
1969	4,542	3,410	3,733	4,162	3,839	3,126	3,999
<u>Housing:</u>							
% Owner Occupied	62.0	62.0	62.9	57.6	68.0	64.7	59.0
Median Value	\$35,400	\$17,100	\$17,000	\$19,400	\$16,700	\$13,500	\$20,500
Median Number of Rooms	6.3	5.2	5.0	5.1	5.1	4.9	4.7
<u>% Over 1.01 Persons/Room</u>							
Room	3.6	8.0	8.2	6.5	7.3	10.3	8.4
Median Rent	\$ 164	\$ 92	\$ 89	\$ 92	\$ 89	\$ 71	\$ 106

Sources: U.S. Bureau of the Census, 1970 Census of Population, General Social and Economic Characteristics, Virginia, PC(1)-C48, Characteristics of the Population, United States Summary, Volume I, Part I, Section 2, PC(1)-01. 1970 Census of Housing, General Housing Characteristics, Virginia, HC(1)-A48. General Housing Characteristics, United States Summary, HC(1)-A1. Survey of Current Business, August 1974.

Note: Regions of the United States are defined following standard Bureau of the Census definitions. For a detailed listing of states comprising each region, see Part 1, 1970 Census Users' Guide, page 77.

RESIDENT BIRTHS BY NUMBER AND RATE PER 1,000 POPULATION

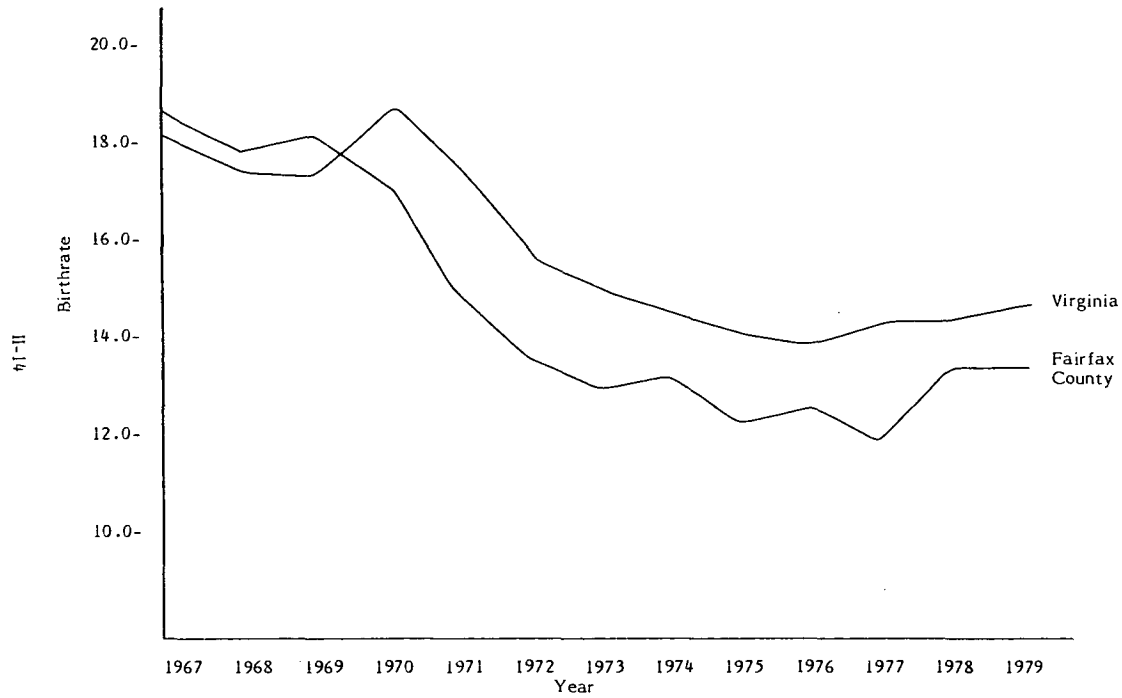
Fairfax County and Virginia, 1967 to 1979

Year	Fairfax County		Virginia	
	Number	Rate	Number	Rate
1967	6,935	18.3	82,775	18.0
1968	7,280	17.8	82,138	17.5
1969	7,732	17.9	83,420	17.4
1970	7,815	17.2	86,081	18.5
1971	7,275	14.7	82,713	17.5
1972	6,508	13.3	75,068	15.8
1973	6,450	12.8	71,665	14.9
1974	6,391	12.6	71,066	14.5
1975	6,248	12.2	70,032	14.1
1976	6,589	12.4	69,972	13.9
1977	6,461	12.0	72,981	14.2
1978	7,226	13.4	73,349	14.2
1979	7,806	13.4	76,899	14.6

Source: Virginia Department of Health, Center for Health Statistics.

BIRTHS BY RATE PER 1,000 POPULATION*

Fairfax County and Virginia, 1967 to 1979



*Rates for cities and counties have been calculated on estimated July 1 household populations.

RESIDENT BIRTHS BY AGE OF MOTHER

Fairfax County and Virginia, 1979

Age of Mother	<u>Fairfax County</u>		<u>Virginia</u>	
	Number	Percent	Number	Percent
Under 15 Years	7	0.1%	244	0.3%
15-19	509	6.5	11,982	15.6
20-24	1,749	22.4	24,945	32.4
25-29	2,643	33.9	23,323	30.3
30-34	2,214	28.4	12,732	16.6
35-39	616	7.9	3,132	4.1
40-44	62	0.8	503	0.7
45 and Over	4	---	28	---
Unknown	<u>2</u>	<u>---</u>	<u>10</u>	<u>---</u>
Total	7,806	100.0%	76,899	100.0%
Median Age	28.1		25.3	

Source: Virginia Department of Health, Center for Health Statistics.

REPORTED ILLEGITIMATE LIVE BIRTHS, INFANT DEATHS,
INDUCED ABORTIONS, AND PREMATURE BIRTHS

Fairfax County, 1970 to 1979

Year	Illegitimate Births*	Infant Deaths**	Induced Abortions	Premature Births***
1970	---	127	---	---
1971	---	113	---	---
1972	282	91	---	---
1973	316	76	---	360
1974	303	90	---	343
1975	343	75	1,210	312
1976	420	63	1,660	353
1977	508	49	2,602	362
1978	557	59	3,389	369
1979	638	84	3,393	454

*Illegitimate births are births of infants whose mothers were not married to their fathers at the time of birth or anytime during the preceding ten months.

**Infant deaths are deaths of children under one year of age.

***Premature birth is also known as immature births of 5lbs. 8oz. or less.

Source: Virginia Department of Health, Bureau of Vital Records and Health Statistics.

RESIDENT DEATHS BY NUMBER AND RATE PER 1,000 POPULATION

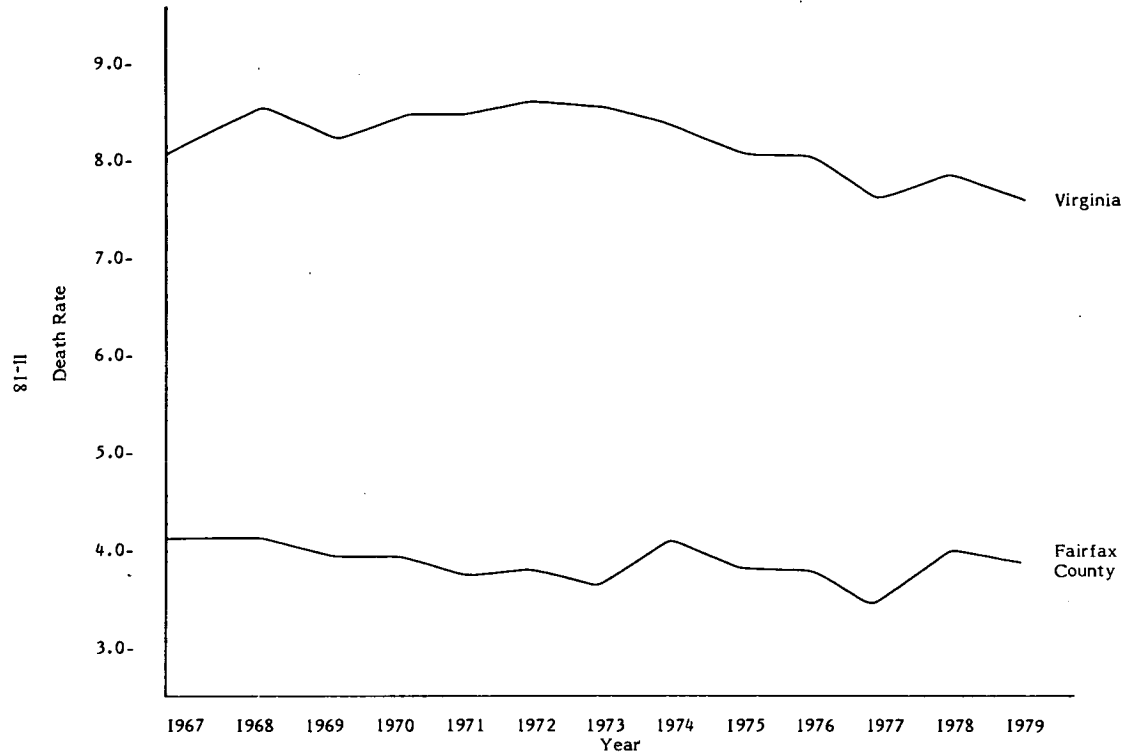
Fairfax County and Virginia, 1967 to 1979

Year	Fairfax County		Virginia	
	Number	Rate	Number	Rate
1967	1,584	4.2	37,191	8.1
1968	1,701	4.2	39,687	8.5
1969	1,716	4.0	39,048	8.2
1970	1,829	4.0	39,009	8.4
1971	1,873	3.8	39,464	8.4
1972	1,988	3.9	40,886	8.6
1973	1,971	3.7	41,103	8.5
1974	2,168	4.2	40,561	8.3
1975	2,022	3.9	39,543	8.0
1976	2,076	3.9	40,056	8.0
1977	1,903	3.5	39,418	7.7
1978	2,197	4.1	40,649	7.9
1979	2,331	4.0	40,667	7.7

Source: Preliminary figures from the Virginia Department of Health,
Center for Health Statistics.

DEATHS BY RATE PER 1,000 POPULATION*

Fairfax County and Virginia, 1967 to 1979



*Rates for cities and counties have been calculated on estimated July 1 household populations.

PRIMARY CAUSE OF DEATH BY PLACE OF RESIDENCE

Fairfax County, Northern Virginia, and Virginia; 1978

Cause of Death	<u>Fairfax County</u>		<u>Northern Virginia</u>		<u>Virginia</u>	
	Number	Percent	Number	Percent	Number	Percent
Major Cardiovascular Diseases	959	43.6%	2,254	45.3%	20,260	49.8%
Diseases of Heart	728	33.1	1,703	34.2	15,275	37.5
Active Rheumatic Fever and Chronic Rheumatic Heart Disease	17	0.8	34	0.7	233	0.6
Hypertensive Heart Disease	2	--	10	0.2	118	0.3
Hypertensive Heart and Renal Disease	--	--	9	0.2	84	0.2
Ischemic Heart Disease	668	30.4	1,530	30.7	13,271	32.6
Chronic Disease of Endocardium and Other Myocardial Insufficiency	6	0.3	14	0.3	167	0.4
All Other Forms of Heart Disease	35	1.6	106	2.1	1,402	3.4
Hypertension	4	0.2	12	0.2	110	0.3
Cerebrovascular Disease	150	6.8	361	7.2	3,746	9.2
Arteriosclerosis	39	1.8	91	1.8	563	1.4
Other Disease of Arteries, Arterioles, and Capillaries	38	1.7	87	1.7	566	1.4
Malignant Neoplasms	571	25.9	1,201	24.1	8,117	20.0
Accidents	149	6.8	313	6.2	2,404	5.9
Diseases of Early Infancy	25	1.1	64	1.3	480	1.1
Influenza and Pneumonia	46	2.1	119	2.4	1,292	3.1
Diabetes Mellitus	43	2.0	85	1.7	629	1.5
Cirrhosis of Liver	38	1.7	97	1.9	553	1.3
Bronchitis, Emphysema, and Asthma	31	1.4	84	1.7	434	1.0
Congenital Anomalies	21	1.0	43	0.8	480	1.1
Suicide	58	2.6	131	2.6	732	1.8
Homocide	26	1.2	57	1.1	480	1.1
Other External Causes	3	0.1	4	---	36	---
Total	2,197	100.0%	4,978	100.0%	40,649	100.0%

Source: Virginia Department of Health, Bureau of Vital Records and Health Statistics, Vital Statistics Monthly Report, December 1978.

ESTIMATED NET IN-MIGRATION*

Fairfax County, 1960 to 1979

Year	Total Population Increase	Natural Increase	Estimated Net In-Migration	Percent Net In-Migration of Total Increase
1960	9,900	5,500	4,400	44.4
1961	16,900	5,300	11,600	68.6
1962	16,700	5,100	11,600	69.5
1963	21,500	5,400	16,100	74.9
1964	15,600	5,800	9,800	62.8
1965	21,000	5,300	15,700	74.8
1966	28,600	5,400	23,200	81.1
1967	30,200	5,400	24,800	82.1
1968	23,200	5,600	17,600	75.9
1969	21,800	6,000	15,800	72.5
1970	16,300	6,000	10,300	63.2
1971	17,000	5,400	11,600	68.2
1972	18,100	4,500	13,600	75.1
1973	16,500	4,500	12,000	72.7
1974	15,000	4,200	10,800	72.0
1975	17,300	4,200	13,100	75.7
1976	13,100	4,500	8,600	65.6
1977	8,200	4,600	3,600	43.9
1978	13,200	5,000	8,200	62.1
1979	12,700	5,500	7,200	56.7

*Estimated net migration is total annual increase minus natural increase.

Sources: Fairfax County Office of Research and Statistics.
Virginia Department of Health, Bureau of Vital Records and Health
Statistics.

MARRIAGES BY PLACE OF OCCURRENCE

Fairfax County and Virginia, 1967 to 1979

Year	<u>Fairfax County</u>		<u>Virginia</u>	
	Number	Percent Change	Number	Percent Change
1967	1,928	N/A	48,653	N/A
1968	2,059	+6.8%	52,173	+7.2%
1969	1,880	-8.7	52,575	+0.8
1970	1,983	+5.5	51,964	-1.2
1971	1,830	-7.7	52,158	+0.4
1972	1,971	+7.7	55,863	+7.1
1973	1,979	+0.4	58,431	+4.6
1974	2,149	+8.6	56,617	-3.1
1975	2,437	+13.4	54,400	-3.9
1976	2,177	-10.7	56,362	+3.6
1977	2,711	+24.5	57,737	+2.4
1978	2,929	+8.0	58,967	+2.1
1979	2,895	-1.2	58,678	-0.5

Source: Virginia Department of Health, Center for Health Statistics.

DIVORCES BY PLACE OF OCCURRENCE

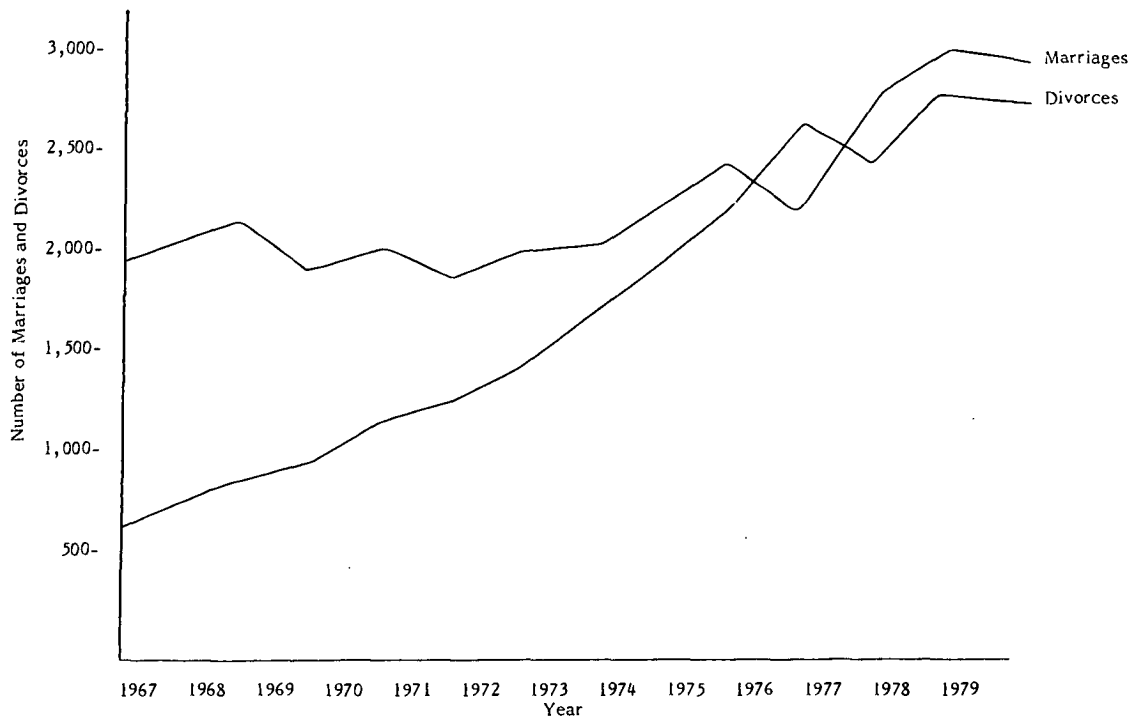
Fairfax County and Virginia, 1967 to 1979

Year	Fairfax County		Virginia	
	Number	Percent Change	Number	Percent Change
1967	716	N/A	9,682	N/A
1968	804	12.3%	10,571	9.2%
1969	933	16.0	11,417	8.0
1970	1,019	9.2	11,879	4.0
1971	1,265	24.1	13,261	11.6
1972	1,397	10.4	14,155	6.7
1973	1,612	15.4	16,078	13.6
1974	1,818	12.8	16,704	3.9
1975	2,041	12.3	19,311	15.6
1976	2,522	23.6	21,377	10.7
1977	2,470	-2.1	21,535	0.7
1978	2,686	8.7	22,654	5.2
1979	2,552	-0.5	23,555	4.0

Source: Virginia Department of Health, Center for Health Statistics.

NUMBER OF MARRIAGES AND DIVORCES

Fairfax County, 1967 to 1979



11-23

*Fairfax City and Falls Church divorce data included in Fairfax County divorce rate.

CENSUS HOUSEHOLDS BY AREA JURISDICTION

1970 and 1980

Jurisdiction	1970	1980	<u>Change: 1970 to 1980</u>	
			Number	Percent
Fairfax County	126,516	205,166	78,650	62.3%
Arlington County	69,360	71,615	2,255	3.3
Alexandria	42,477	49,004	6,527	15.4
Loudoun County	10,402	18,653	8,251	79.3
Prince William County*	27,760	50,696	22,936	82.6
Falls Church	3,685	4,250	565	15.3
Fairfax City	6,122	6,881	759	12.4
Montgomery County	156,674	207,195	50,521	32.2
Prince George's County	192,962	224,789	31,827	16.5
District of Columbia	<u>262,538</u>	<u>252,952</u>	<u>-9,586</u>	-3.7
Total	898,496	1,091,201	192,705	21.4%

*Includes independent Cities of Manassas and Manassas Park.

Sources: 1970, 1980 U.S. Census.

HOUSEHOLD FORECASTS BY JURISDICTION

Washington Metropolitan Region, 1980-2000

Jurisdiction	Year				
	Actual 1980	1985	1990	1995	2000
Fairfax County	205,166	236,700	265,100	295,900	330,500
Alexandria City	49,004	56,000	62,000	64,000	65,000
Arlington County	71,615	83,000	89,000	94,000	100,000
Fairfax City	6,881	7,600	7,900	8,200	8,500
Falls Church City	4,250	4,700	4,900	5,100	5,300
Loudoun County	18,653	30,000	38,000	45,000	53,000
Prince William County*	50,696	63,000	74,000	84,000	94,000
Montgomery County	207,195	227,500	252,000	274,500	294,000
Prince George's County	224,789	247,000	274,000	293,000	311,000
District of Columbia	252,952	285,000	287,000	289,000	291,000
Total Region	1,091,201	1,240,500	1,353,900	1,452,700	1,552,300

*Includes the independent cities of Manassas and Manassas Park.

Sources: 1980 - U.S. Bureau of the Census.
Metropolitan Washington Council of Governments, Cooperative Forecasting Program.

POPULATION, HOUSEHOLDS, AND HOUSEHOLD SIZE

By Area Jurisdictions, 1980

Jurisdiction	Population In Households	Population In Group Quarters	Households	Population Per Household
Fairfax County	590,211	6,690	205,166	2.88
Arlington County	148,515	4,084	71,615	2.07
Alexandria	101,556	1,661	49,004	2.07
Loudoun County	56,827	600	18,653	3.05
Prince William County*	164,475	2,190	50,696	3.24
Falls Church City	9,479	36	4,250	2.23
Fairfax City	18,976	414	6,881	2.76
Montgomery County	573,421	5,632	207,195	2.77
Prince George's County	649,665	15,406	224,789	2.89
District of Columbia	<u>605,752</u>	<u>31,899</u>	<u>252,952</u>	2.39
Total	2,918,877	68,612	1,091,201	2.67

*Includes independent Cities of Manassas and Manassas Park.

Source: 1980 U.S. Census.

DISTRIBUTION OF HOUSEHOLDS BY SIZE

Fairfax County, 1970 - 1978 - 1980

Size of Household	1970		1978		1980	
	Number	Percent	Number	Percent	Number*	Percent
One Person	9,998	7.9%	21,400	11.5%	36,109	17.6%
Two Person	30,480	24.1	49,600	26.6	62,781	30.6
Three Person	26,050	20.6	43,400	23.3	35,904	17.5
Four Person	28,263	22.3	38,600	20.7	43,700	21.3
Five Person	17,435	13.8	19,600	10.5	17,234	8.4
Six or More Persons	<u>14,290</u>	<u>11.3</u>	<u>13,800</u>	<u>7.4</u>	<u>9,438</u>	<u>4.6</u>
Total	126,516	100.0%	186,400	100.0%	205,166	100.0%
Average Household Size	3.51		3.14		2.88	

*Numbers derived from the application of the 1980 Fairfax County Household Survey size distributions to the 1980 U.S. Census household Count.

Sources: 1970 and 1980 — U.S. Bureau of the Census.
 1978 — Fairfax County Office of Research and Statistics,
 1977 Demographic Survey.
 1980 — Fairfax County Office of Research and Statistics,
 1980 Household Survey.

HOUSEHOLD SIZE BY JURISDICTION

1970 and 1975

Jurisdiction	Number in Household						Total
	1	2	3	4	5	6+	
<u>1970</u>							
Fairfax County, Virginia	7.9%	24.1%	20.6%	22.3%	13.8%	11.3%	100.0%
Arlington County, Virginia	29.6	34.4	15.8	10.8	5.3	4.1	100.0
Alexandria City, Virginia	26.5	32.9	17.6	12.0	5.8	5.2	100.0
Montgomery County, Maryland	13.5	26.7	18.0	19.0	12.2	10.6	100.0
Prince George's County, Maryland	12.0	26.6	20.1	18.8	11.4	11.1	100.0
District of Columbia	32.1	26.6	14.5	10.6	6.8	9.4	100.0
Total SMSA*	19.4	26.9	17.7	16.2	9.9	9.9	100.0
<u>1975</u>							
Fairfax County, Virginia	9.5%	26.6%	21.9%	22.1%	11.7%	8.2%	100.0%
Arlington County, Virginia	34.8	32.7	14.3	10.9	5.2	2.1	100.0
Alexandria City, Virginia	30.6	32.2	19.6	10.4	3.2	4.0	100.0
Montgomery County, Maryland	17.4	27.3	17.5	19.0	11.3	7.5	100.0
Prince George's County, Maryland	16.4	31.1	18.9	18.4	8.5	6.7	100.0
District of Columbia	34.1	25.8	15.2	11.0	6.7	7.2	100.0
Total SMSA*	21.6	27.9	17.3	17.2	8.9	7.1	100.0

*Includes the jurisdictions cited, the counties of Loudoun and Prince William, and the cities of Fairfax and Falls Church in Virginia.

Sources: U.S. Department of Commerce, Bureau of the Census, Census Tracts, PHC(1)-226.
 Washington Center for Metropolitan Studies, unpublished tabulations from Trends Alert census updating program.

HOUSEHOLD RELATIONSHIPS BY JURISDICTION

1970 and 1975

Jurisdiction	<u>Husband-Wife Headed Households</u>		<u>Other Headed Households</u>	
	1970	1975	1970	1975
Fairfax County, Virginia	82.9%	80.8%	17.1%	19.2%
District of Columbia	43.2	38.3	56.8	61.7
Montgomery County, Maryland	76.0	71.2	24.0	28.8
Prince George's County, Maryland	75.1	67.5	24.9	32.5
Alexandria City, Virginia	56.7	52.3	43.3	47.7
Arlington County, Virginia	55.5	50.0	44.5	50.0
Total SMSA*	65.0	61.8	35.0	38.2

*Includes the jurisdictions cited above, the counties of Loudoun and Prince William, and the cities of Fairfax and Falls Church in Virginia.

Sources: U.S. Bureau of the Census, Census of Population and Housing: 1970, Census Tracts, PHC(1)-226.
Washington Center for Metropolitan Studies, unpublished tabulations from Trends Alert census updating program.

PROFILE OF GEOGRAPHIC MOBILITY OF HOUSEHOLD HEADS
LIVING IN FAIRFAX COUNTY, 1980

Mobility Status	Place of Residence in 1978	Place of Residence in 1979	Number of Households	Percent
Intra-County Mover	Fairfax County	Different House in County	19,900	9.7%
Intra-State Mover	Other Jurisdictions in Virginia	Fairfax County	10,400	5.1
Interstate Mover	Other State	Fairfax County	16,000	7.8
International Mover	Abroad	Fairfax County	3,300	1.6
Non-Mover	Fairfax County	Same House in County	155,200	75.8
Total			204,800	100.0%

Source: Fairfax County Office of Research and Statistics, 1980 Household Survey

III EDUCATION

MEDIAN YEARS OF SCHOOL COMPLETED BY PLANNING DISTRICT

Fairfax County, 1970

Planning District	Median Years of School Completed
Annandale	13.95
Baileys	12.91
Bull Run	12.86
Fairfax	13.58
Jefferson	12.71
Lincolnia	12.95
Lower Potomac	12.34
McLean	13.93
Mount Vernon	12.79
Pohick ¹	12.93
Rose Hill	12.52
Springfield	13.29
Upper Potomac ²	13.65
Vienna ³	12.84
County Median	12.90

¹Includes the Town of Clifton.

²Includes the Town of Herndon.

³Includes the Town of Vienna.

Source: U.S. Bureau of the Census, U.S. Census of Population and Housing: 1970, Census Tracts, PHC(1)-226.

SCHOOL MEMBERSHIP*

Fairfax County, School Years 1968-1969 to 1980-1981

School Year	Public Schools	George Mason University	All Campuses Northern Virginia Community College
1968-1969	122,077	1,445	5,271
1969-1970	129,979	1,890	7,629
1970-1971	133,362	2,390	9,718
1971-1972	135,948	3,110	12,047
1972-1973	135,780	4,125	13,974
1973-1974	135,839	4,926	17,261
1974-1975	136,508	6,124	21,439
1975-1976	136,944	8,022	27,198
1976-1977	134,567	8,470	26,557
1977-1978	132,217	8,920	29,735
1978-1979	129,423	10,767	31,599
1979-1980	127,978	12,249	31,764
1980-1981	126,775	13,293	33,899

*Based on September or fall membership.

Sources: Fairfax County Public Schools, Office of Records
Management.
George Mason University, Office of the Registrar.
Northern Virginia Community College, Office of
Institutional Research.

ESTIMATES AND PROJECTIONS OF PUBLIC SCHOOL MEMBERSHIP*

Fairfax County, School Years 1970-1971 to 1983-1984

	Head Start	K	1	2	3	4	5	6	7	8	9	10	11	12	Special Educa.	Total
1970 (Actual)	194	8,159	9,341	10,184	10,175	10,707	10,689	10,545	10,937	10,839	11,149	10,252	9,676	9,095	1,420	133,362
1971 (Actual)	167	7,843	8,833	10,129	10,521	10,415	11,051	10,978	11,095	11,090	11,505	11,067	9,907	9,584	1,763	135,948
1972 (Actual)	174	7,628	8,261	9,314	10,412	10,710	10,501	11,127	11,514	11,249	11,688	11,217	10,409	9,752	1,824	135,780
1973 (Actual)	124	8,155	8,126	8,885	9,488	10,521	10,826	10,692	11,483	11,400	11,787	11,561	10,543	10,145	2,103	135,839
1974 (Actual)	113	8,795	8,880	8,663	8,987	9,626	10,619	10,851	11,078	11,451	11,893	11,617	10,938	10,338	2,659	136,508
1975 (Actual)	175	8,707	9,699	9,151	8,869	9,490	9,877	11,021	11,262	11,335	12,256	11,675	10,917	10,635	1,875	136,944
1976 (Actual)	139	7,552	9,505	9,622	9,271	9,037	9,430	9,919	10,986	11,265	11,978	11,796	11,176	10,702	2,189	134,567
1977 (Actual)	172	6,825	8,607	9,682	9,542	9,410	9,237	9,628	9,973	11,087	11,886	11,430	11,214	10,964	2,560	132,217
1978 (Actual)	161	6,427	7,822	8,756	9,791	9,845	9,456	9,304	9,704	10,113	11,765	11,578	10,948	10,954	2,799	129,423
1979 (Actual)	171	6,565	7,644	8,065	8,821	9,878	9,818	9,314	9,383	9,554	10,957	11,443	11,130	10,578	4,657	127,978
1980 (Actual)	201	6,357	7,805	7,663	8,417	9,392	10,350	10,238	9,929	9,631	10,610	10,674	10,963	10,887	3,658	126,775
1981 (Projected)	255	6,287	7,317	7,882	8,128	8,540	9,487	10,489	10,736	10,026	10,259	10,205	10,224	10,719	4,196	124,750
1982 (Projected)	255	6,349	7,413	7,510	8,413	8,359	8,742	9,719	11,127	10,809	10,695	9,927	9,826	9,935	4,196	123,275
1983 (Projected)	255	6,466	7,542	7,643	8,055	8,661	8,614	9,014	10,422	11,237	11,435	10,394	9,604	9,564	4,196	123,102

*Based on September membership.

Source: Fairfax County Public Schools, Office of Records Management and the Facilities Services Department.

HANDICAPPED CHILDREN RECEIVING
SPECIAL EDUCATION AND RELATED SERVICES
BY AGE AND DISABILITY
Fairfax County, December 1980

Major Handicapping Disability	Age of Handicapped Children (Years)				
	0 - 5	6 - 17	18 - 21	Total	Percent
Mentally Retarded	42	585	67	694	5.3%
Hard of Hearing	3	117	9	129	1.0
Deaf	32	67	0	99	0.8
Speech Impaired	399	3,135	29	3,563	27.1
Visually Impaired	15	64	3	82	0.6
Seriously Emotionally Disturbed	10	445	35	490	3.7
Orthopedically Impaired	31	163	11	205	1.6
Specific Learning Disability	165	7,361	166	7,692	58.5
Multihandicapped	26	134	24	184	1.4
Deaf and Blind	<u>0</u>	<u>4</u>	<u>0</u>	<u>4</u>	<u>--</u>
Total	723	12,075	344	13,142	100.0%

Source: Fairfax County Public Schools, Department of Student Services and Special Education.

TOTAL NUMBER OF PUBLIC SCHOOLS IN OPERATION

BY YEAR AND LEVEL

Fairfax County, School Years 1960 - 1961 to 1980 - 1981

School Year	Elementary	Intermediate	Secondary	Special Education Centers	Total
1960 - 1961	73	8	12		93
1961 - 1962	78	10	11		99
1962 - 1963	81	11	14		106
1963 - 1964	85	11	15		111
1964 - 1965	91	12	16		119
1965 - 1966	98	15	16		129
1966 - 1967	100	16	17		133
1967 - 1968	106	17	18		141
1968 - 1969	116	17	19		152
1969 - 1970	124	17	19		160
1970 - 1971	123	18	19		160
1971 - 1972	125	18	20		163
1972 - 1973	127	18	20		165
1973 - 1974	128	18	22		168
1974 - 1975	124	17	22	5	168
1975 - 1976	124	17	22	6	169
1976 - 1977	123	18	22	14	177
1977 - 1978	122	18	23	21	184
1978 - 1979	122	18	23	21	184
1979 - 1980	126	18	23	21	188
1980 - 1981	121	20	23	21	185

Source: Fairfax County Public Schools, Office of Records Management.

PER PUPIL COST OF EDUCATION

Fairfax County, School Years 1963-1964 to 1980-1981

School Year	Operating Cost Per Pupil
1963-1964	\$ 438
1964-1965	464
1965-1966	513
1966-1967	560
1967-1968	635
1968-1969	692
1969-1970	774
1970-1971	855
1971-1972	917
1972-1973	1,021
1973-1974	1,151
1974-1975	1,316
1975-1976	1,482
1976-1977	1,641
1977-1978	1,824
1978-1979	2,006
1979-1980	2,243
1980-1981	2,785*

*Estimate

Source: Fairfax County Public Schools, Office of
Records Management.

AVERAGE ANNUAL SALARY OF PUBLIC SCHOOL PERSONNEL

Fairfax County, School Year 1980-1981

Number of Positions	Classification	Average Salary
Principal Positions:		
121	Elementary Schools Only	\$34,359
20	Intermediate Schools Only	\$39,322
<u>23</u>	Secondary Schools Only	\$42,200
	Overall Average	\$36,006
164	Total	
Assistant Principal Positions:		
35	Elementary Schools Only	\$28,093
24	Intermediate Schools Only	\$35,287
<u>81</u>	Secondary Schools Only	\$35,732
	Overall Average	\$33,232
140	Total	
52	Instructional Supervisory Positions	\$36,220
60	Visiting Teacher Positions	\$21,221
2,256	Elementary Teaching Positions (K-6)	\$21,123
895	Intermediate Teaching Positions (7-8)	\$22,033
2,082	Secondary Teaching Positions (9-12)	\$22,888

Source: Fairfax County Public Schools, Office of Salary and Benefit Services.

AVERAGE SALARY OF TEACHERS

Fairfax County, School Years 1972-1973 to 1980-1981

School Year	Average Salary
1972-1973	\$12,288
1973-1974	\$12,973
1974-1975	\$13,854
1975-1976	\$15,227
1976-1977	\$16,360
1977-1978	\$17,212
1978-1979	\$18,562
1979-1980	\$19,642
1980-1981	\$21,981

Source: Fairfax County Public Schools, Office of Salary and Benefit Services.

EDUCATIONAL ATTAINMENT OF PERSONS

25 YEARS OF AGE AND OLDER

Fairfax County, 1970 and 1980

Educational Attainment	<u>1970</u>		<u>1980</u>	
	Number	Percent	Number	Percent
No school years completed	820	0.4%	100	0.0%*
Elementary	21,693	9.5	8,200	2.3
High school: 1-3 years	26,013	11.4	11,800	3.3
4 or more years	71,955	31.3	80,300	22.4
College: 1-3 years	39,161	17.1	77,100	21.5
4 or more years	<u>69,293</u>	<u>30.3</u>	<u>181,000</u>	<u>50.5</u>
Total	228,935	100.0%	358,500	100.0%
Median school years completed	12.9 years		16.0 years	
Percent high school graduates	78.8%		94.4%	
Percent college graduates	30.3%		50.5%	

*Less than one-tenth of one percent.

Sources: 1970 - U.S. Bureau of the Census
 1980 - Fairfax County Office of Research and Statistics, 1980 Household Survey

IV EMPLOYMENT

EMPLOYMENT FAIRFAX COUNTY

1960 to 1979*

Year	Total Employment	Employment Increase	Percent Change
1960	39,958	---	---
1961	40,804	846	2.1%
1962	42,931	2,127	5.2
1963	47,240	4,309	10.0
1964	52,292	5,052	10.7
1965	60,380	8,088	15.5
1966	70,750	10,370	17.2
1967	73,233	2,483	3.5
1968	84,987	11,754	16.1
1969	95,105	10,118	11.9
1970	97,206	2,101	2.2
1971	100,399	3,193	3.3
1972	112,646	12,247	12.2
1973	113,618	972	8.6
1974	122,156	8,538	7.5
1975	125,599	3,443	2.8
1976	136,697	11,098	8.8
1977	145,091	8,394	6.1
1978	158,930	13,839	9.5
1979	176,252	17,322	10.9

*Data is as of March of each year.

Source: Virginia Employment Commission.

EMPLOYMENT BY OCCUPATION

Fairfax County 1960, 1970, 1975

	1960		1970		Average Annual Change 1960-1970 Percent	1975		Average Annual Change 1970-1975 Percent
	Number	Percent	Number	Percent		Number	Percent	
White Collar	51,853	65.0%	123,070	75.2%	13.7%	165,400	75.8%	7.5%
Professional/Managerial	28,567	35.8	71,754	43.8	15.1	101,700	46.6	9.1
Clerical	17,015	21.3	38,121	23.3	12.4	47,700	21.9	5.5
Sales	6,271	7.9	13,195	8.1	11.0	16,000	7.3	4.6
Blue Collar	25,217	31.6	40,486	24.7	6.1	43,600	20.0	1.7
Craftsmen	11,466	14.4	15,841	9.7	3.8	23,500	10.8	10.5
Operatives	5,000	6.2	7,832	4.8	5.7	7,000	3.2	-2.6
Laborers	1,890	2.4	2,885	1.8	5.3	2,700	1.2	-1.5
Farm	523	0.7	345	0.2	-5.2	---	---	---
Service	4,547	5.7	12,088	7.4	16.6	9,500	4.0	-5.9
Private Household	1,791	2.2	1,495	0.9	-2.0	900	0.4	-14.4
Not Reported	2,715	3.4	---	---	---	9,200	4.2	---
Total	79,785	100.0%	163,556	100.0%	10.5%	218,200	100.0%	7.3%

Source: U.S. Bureau of the Census, U.S. Census of Population: 1960 and 1970; General Social and Economic Characteristics: District of Columbia and Virginia.
 Washington Center for Metropolitan Studies, Trends Alert, 1975.

EMPLOYMENT WITHIN FAIRFAX COUNTY* BY INDUSTRY

1975 to 1980**

Industry	1975	1976	1977	1978	1979	1980
Construction	11,863	12,213	13,861	14,838	15,408	14,302
Manufacturing	8,302	8,292	9,047	9,409	9,807	10,031
Transportation, Communications, Public Utilities	6,699	7,525	7,042	7,311	6,990	7,121
Wholesale Trade	4,822	4,830	5,215	5,600	7,171	7,669
Retail Trade	38,479	40,527	41,932	44,141	46,482	46,393
Finance, Insurance, Real Estate	10,250	10,933	12,477	13,280	13,083	13,747
Services	40,933	40,551	43,442	46,171	57,392	61,174
Federal Government	21,110	20,717	21,020	21,351	21,045	22,764
State and Local Government	28,523	28,885	30,471	31,296	31,608	32,345
Other***	31,289	31,929	33,765	35,392	38,244	39,445
Total	202,270	206,402	218,272	228,789	247,230	254,991

*Includes Fairfax and Falls Church cities.

**Data as of October for years 1975 to 1979, data as of June for year 1980.

***Includes estimates of agricultural, forestry, and fishery workers; self-employed persons; unpaid family workers; domestics; international government employees; and uniformed military personnel stationed in the Washington metropolitan area.

Source: Metropolitan Washington Council of Governments, Area Regional Employment Allocation System.

EMPLOYMENT BY JURISDICTION

Washington Metropolitan Region, 1975 to 1980*

Jurisdiction	Number of Employees					
	1975	1976	1977	1978	1979	1980
Fairfax County, Virginia**	202,270	206,402	218,272	228,789	247,230	254,991
Arlington County, Virginia	140,782	142,764	147,895	153,800	155,698	163,298
Alexandria City, Virginia	53,137	54,552	57,409	60,275	66,081	68,284
Loudoun County, Virginia	13,877	14,442	15,038	15,766	17,322	17,704
Prince William County, Virginia	41,207	42,079	44,511	46,680	49,619	51,127
Charles County, Maryland	14,827	15,280	17,463	17,463	19,182	19,918
Montgomery County, Maryland	246,553	255,017	271,479	284,845	270,116	280,130
Prince George's County, Maryland	206,361	211,811	224,078	234,571	229,811	235,432
District of Columbia	626,589	626,589	633,620	647,244	678,538	683,501
Total Region	1,545,602	1,568,936	1,629,766	1,689,433	1,733,597	1,774,385

*Data as of October for years 1975 to 1979; data as of June for year 1980.

**Includes Fairfax and Falls Church cities.

Source: Metropolitan Washington Council of Governments, Area Regional Employment Allocation System.

EMPLOYMENT FORECASTS* BY JURISDICTION

Washington Metropolitan Region, 1980 to 2000

Jurisdiction	1980	1985	1990	1995	2000
Fairfax County	183,000	221,000	266,000	318,000	372,000
Alexandria City	56,500	71,000	78,000	80,000	80,000
Arlington County	142,000	160,000	175,000	188,000	198,000
Fairfax City	19,000	20,000	21,000	23,000	24,000
Falls Church City	11,000	12,000	13,000	13,500	14,000
Loudoun County	20,400	29,000	37,000	47,000	58,000
Prince William County**	48,000	56,000	65,000	74,000	84,000
Montgomery County	286,000	326,000	371,000	403,000	440,000
Prince George's County	245,000	292,000	342,000	384,000	426,000
District of Columbia	643,600	665,000	679,000	690,000	701,000
Total Region	1,654,000	1,852,000	2,047,000	2,220,000	2,397,000

*Employment forecasts exclude military employment and projections of self-employed persons.

**Includes the independent cities of Manassas and Manassas Park.

Source: Metropolitan Washington Council of Governments, Cooperative Forecasting Program.

Place of Work of Employed Persons
Fairfax County, 1970 and 1980

Place of Employment	1970		1980	
	Number	Percent	Number	Percent
Northern Virginia	116,775	63.2%	206,200	66.7%
Fairfax County	62,816	34.0	130,200	42.1
Arlington County	29,023	15.7	36,200	11.7
Prince William County	1,082	0.6	4,600	1.5
Loudoun County	1,084	0.6	900	0.3
Alexandria City	13,710	7.4	23,500	7.6
Fairfax City	5,168	2.8	3,400	1.1
Falls Church City	3,892	2.1	7,400	2.4
Maryland	9,921	5.4	17,000	5.5
District of Columbia	45,602	24.7	82,200	26.6
Elsewhere	3,953	2.1	3,700	1.2
Not Reported	<u>8,518</u>	<u>4.6</u>	<u>0</u>	<u>0.0</u>
Total	184,769	100.0%	309,100	100.0%

Sources: 1970 - U.S. Bureau of the Census
1980 - Fairfax County Office of Research and Statistics,
1980 Household Survey

FEDERAL CIVILIAN EMPLOYMENT
WITHIN FAIRFAX COUNTY BY AGENCY
1979*

Agency	Federal Civilian Employment	Percent of Total
Postal Service	2,480	18.0%
Army	5,506	40.0
Navy	236	1.7
Air Force	39	0.2
Other Defense	496	3.6
Agriculture	16	0.1
Health, Education, and Welfare	33	0.2
Treasury	159	1.2
Interior	3,069	22.3
Transportation	422	3.1
Justice	221	1.6
Commerce	478	3.5
State	36	0.3
General Services	545	4.0
Legislative Branch	17	0.1
All Other	8	0.1
 Total All Agencies	 13,761	 100.0%

*Data as of December 31, 1979.

Source: U.S. Civil Service Commission, Federal Civilian Employment
by Geographic Area, 1973 to 1979.

DISTRIBUTION OF FEDERAL CIVILIAN EMPLOYMENT

BY JURISDICTION (PLACE OF WORK)

Washington SMSA, 1975 to 1979

6-11

Jurisdiction	1975	1976	1977	1978	1979	Percent Change 1975 to 1979
Fairfax County, Virginia	14,410	14,134	13,745	13,957	13,761	-4.5%
Alexandria City, Virginia	9,804	9,561	9,854	9,646	9,785	-0.1
Arlington County, Virginia	36,125	35,910	36,942	36,738	37,032	1.0
Fairfax City, Virginia	421	478	522	513	572	35.9
Falls Church City, Virginia	699	615	771	776	684	-2.1
Loudoun County, Virginia	1,504	1,547	1,616	1,784	1,509	0.3
Manassas City, Virginia	NA*	NA*	44	60	85	---
Prince William County, Virginia	1,998	1,876	1,975	1,837	1,873	-6.3
Charles County, Maryland	2,387	2,416	2,459	2,459	2,494	4.4
Montgomery County, Maryland	41,167	43,271	40,551	41,417	42,013	2.1
Prince George's County, Maryland	23,034	22,963	23,562	24,333	24,230	5.2
District of Columbia	203,831	204,729	204,720	208,051	207,528	1.8
Total Washington SMSA	335,380	337,500	336,761	341,571	341,566	1.8%

*Not Available

Source: U.S. Civil Service Commission, Federal Civilian Employment by Geographic Area, 1975 to 1979.

EMPLOYMENT STATUS BY SEX

Fairfax County, 1980

Employment Status	Female	Male
Employed Full-Time	41.9%	75.0%
Employed Part-Time	15.0	6.1
Not Employed	40.6	16.7
Unemployed but Seeking Work	<u>2.5</u>	<u>2.2</u>
Total	100.0%	100.0%

Source: Fairfax County Office of Research and Statistics, unpublished tabulations from 1980 Household Survey.

LABOR FORCE PARTICIPATION BY SEX

Fairfax County, 1950 to 1980

Year	Female		Male	
	Number	Percent	Number	Percent
1950	8,665	28.2%	31,529	82.9%
1960	25,908	32.5	72,118	84.3
1970	65,247	43.4	126,911	85.7
1980	141,300	59.4	186,400	83.4

Sources: 1950 to 1970: U.S. Bureau of the Census.
1980: Fairfax County Office of Research and Statistics
unpublished tabulations from 1980 Household Survey.

AVERAGE ANNUAL UNEMPLOYMENT RATES BY AREA

1970 to 1980

Area	1970	1971	1972	1973	1974	1975	1976	1977	1978	1979	1980
Fairfax County	2.3	2.2	2.5	3.4	3.7	5.0	4.6	3.6	3.4	3.0	2.8
Northern Virginia	2.3	2.2	2.5	3.5	3.8	5.0	4.6	3.4	3.7	3.3	3.1
State of Virginia	3.7	3.6	3.6	3.6	4.5	6.6	5.5	5.5	5.4	4.7	5.1
United States	4.9	5.9	5.6	4.9	5.6	8.5	7.7	7.1	6.0	5.8	6.8

Source: Virginia Employment Commission, Labor Market Trends and Special Monthly Report.

UNEMPLOYMENT RATES BY MONTH

Fairfax County, 1980

Month	Civilian Labor Force*	Unemployment	Rate
January	290,904	8,976	3.1%
February	290,031	7,085	2.4
March	293,109	7,187	2.5
April	295,146	7,751	2.6
May	297,763	7,889	2.6
June	301,626	10,067	3.3
July	303,594	9,469	3.1
August	302,888	8,923	2.9
September	299,839	9,674	3.2
October	300,892	9,189	3.1
November	302,754	8,544	2.8
December	304,465	7,644	2.5
Average	298,584	8,533	2.8%

*Excludes seasonal labor force.

Source: Virginia Employment Commission, Labor Force Estimates.

V INCOME

FAMILY INCOME DISTRIBUTION

Fairfax County, 1969 - 1976 - 1978

Income Level	1969		1976		1978	
	Number	Percent	Number	Percent	Number	Percent
Under \$5,000	7,108	6.3%	1,000	0.7%	1,300	0.8%
\$ 5,000 - 9,999	18,283	16.0	5,000	3.5	3,200	2.0
\$10,000 - 14,999	28,580	25.0	11,500	8.0	9,700	6.0
\$15,000 - 24,999	43,399	38.0	37,700	26.1	32,600	20.3
\$25,000 - 49,999	15,395	13.5	71,700	49.7	87,900	54.7
\$50,000 or more	<u>1,317</u>	<u>1.2</u>	<u>13,700</u>	<u>9.5</u>	<u>26,000</u>	<u>16.2</u>
Total	114,082	100.0%	144,300*	100.0%*	160,700	100.0%
Median Income	\$15,707		\$28,500		\$33,200	

*Includes category of not reported.

Sources: 1969 - U.S. Bureau of the Census
 1976 - Fairfax County Office of Research and Statistics,
 1977 Demographic Survey
 1978 - Fairfax County Office of Research and Statistics,
 1980 Household Survey

HOUSEHOLD INCOME DISTRIBUTION

Fairfax County, 1978

Income Level	Number	Percent
Under \$5,000	2,662	1.3%
\$ 5,000 - 9,999	5,939	2.9
\$10,000 - 14,999	19,661	9.6
\$15,000 - 24,999	48,538	23.7
\$25,000 - 49,999	101,171	49.4
\$50,000 or More	<u>26,829</u>	<u>13.1</u>
Total	204,800	100.0%

Source: Fairfax County Office of Research and Statistics
1980 Household Survey.

MEDIAN FAMILY INCOME* BY PLANNING DISTRICT**

Fairfax County, 1970

<u>Planning District</u>	<u>Median Family Income</u>
Annandale	\$17,534
Baileys	14,748
Bull Run	15,250
Fairfax	17,169
Jefferson	14,334
Lincolnia	14,271
Lower Potomac	8,756
McLean	18,791
Mount Vernon	14,305
Pohick ¹	15,828
Rose Hill	14,102
Springfield	16,835
Upper Potomac ²	15,915
Vienna ³	16,812
County Median	\$15,707

*Data represents the median amount of money income earned by families during 1969.

**Estimates are derived from data provided by census tracts.

¹Includes the Town of Clifton.

²Includes the Town of Herndon.

³Includes the Town of Vienna.

Source: U.S. Bureau of the Census, U.S. Census of Population and Housing: 1970, Census Tracts, PHC(1)-226.

NUMBER OF WAGE EARNERS* IN HOUSEHOLD BY HOUSEHOLD INCOME**

Fairfax County, 1977

Numbers of Earners	<u>Household Income</u>				
	<u>Under \$15,000</u>	<u>\$15,000- 24,999</u>	<u>\$25,000- 34,999</u>	<u>\$35,000- 49,999</u>	<u>\$50,000- or More</u>
One	76.5%	56.2%	55.2%	39.5%	32.7%
Two	21.6	41.3	42.0	55.2	56.1
Three or More	1.9	2.5	2.8	5.3	11.2
Total	100.0%	100.0%	100.0%	100.0%	100.0%

*Includes those persons twenty-one years of age or older.

**Data represents money income earned by households during 1976.

Source: Fairfax County Office of Research and Statistics, derived from the 1977 Demographic Survey of Fairfax County, October 1977.

HOUSEHOLD INCOME BY SEX OF HOUSEHOLDER

Fairfax County, 1978

Income Level	Percentage of Households	
	Female Householder	Male Householder
Under \$5,000	4.7%	0.4%
\$ 5,000 - 9,999	7.9	1.8
\$10,000 - 11,999	12.0	2.0
\$12,000 - 14,999	15.7	3.4
\$15,000 - 19,999	23.6	7.6
\$20,000 - 24,999	14.9	12.6
\$25,000 - 29,999	11.1	13.5
\$30,000 - 39,999	7.1	26.0
\$40,000 - 49,999	1.5	16.8
\$50,000 - 64,999	0.6	10.5
\$65,000 or More	<u>0.9</u>	<u>5.4</u>
Total	100.0%	100.0%
Median Income	\$17,000	\$33,400

Source: Fairfax County Office of Research and Statistics unpublished tabulations from the 1980 Household Survey.

FAMILY INCOME DISTRIBUTION*
BY PLACE OF EMPLOYMENT OF FAMILY HEAD
Fairfax County, 1977

Income Level	Commuters Out of Fairfax County		Living and Working Within Fairfax County	
	Number	Percent	Number	Percent
Under \$5,000	200	0.1%	500	0.9%
\$ 5,000 - 9,999	2,800	1.7	2,500	4.2
\$10,000 - 14,999	10,700	6.4	6,300	10.5
\$15,000 - 24,999	42,300	25.2	17,600	29.3
\$25,000 - 34,999	55,100	32.9	15,500	25.9
\$35,000 - 49,999	38,900	23.2	11,500	19.3
\$50,000 or More	<u>17,600</u>	<u>10.5</u>	<u>5,900</u>	<u>9.9</u>
Total	167,600	100.0%	59,800	100.0%
Median Income	\$30,000		\$26,900	

*Data represents money income earned by families during 1976.

Source: Fairfax County Office of Research and Statistics, 1977 Demographic Survey.

EARNINGS OF WORKERS*

COMMUTING INTO AND OUT OF FAIRFAX COUNTY, 1970

Earnings of Workers	<u>Commuters Into Fairfax County</u>		<u>Commuters Out of Fairfax County</u>		<u>Living and Working Within Fairfax County</u>	
	Number	Percent	Number	Percent	Number	Percent
	Under \$1,000	1,178	3.9%	3,401	3.2%	7,539
\$ 1,000 - 2,999	2,774	9.2	7,073	6.8	11,123	19.1
\$ 3,000 - 4,999	3,546	11.8	8,736	8.3	8,362	14.3
\$ 5,000 - 6,999	5,433	18.1	11,951	11.5	7,844	13.4
\$ 7,000 - 9,999	7,697	25.7	18,565	17.7	9,380	16.1
\$10,000 - 14,999	6,091	20.3	23,797	22.7	7,869	13.5
\$15,000 - 24,999	2,696	9.0	25,930	24.7	5,018	8.6
\$25,000 or More	586	2.0	5,373	5.1	1,242	2.1
Total	30,001	100.0%	104,826	100.0%	58,377	100.0%
Median	\$7,800		\$10,600		\$5,600	

*Data represents money income earned by workers during 1969.

Source: U.S. Bureau of the Census, U.S. Census of Population: 1970; Journey to Work, PC(2)-6D.

EFFECTIVE BUYING INCOME*

Washington SMSA, 1979 and 1984

Jurisdiction	Total Effective Buying Income			Average Household Effective Buying Income		
	1979	1984	Percent Change	1979	1984	Percent Change
Fairfax County, Virginia	\$ 5,946,677	\$10,972,016	84.5%	\$33,578	\$53,005	57.9%
Alexandria City, Virginia	1,197,871	2,059,535	71.9	26,502	44,007	67.7
Arlington County, Virginia	1,941,244	3,069,321	58.1	28,216	46,717	65.6
Fairfax City, Virginia	217,037	373,944	72.3	33,912	58,429	72.3
Falls Church City, Virginia	118,168	184,743	56.3	27,481	41,987	52.8
Loudoun County, Virginia	453,660	942,712	107.8	25,203	42,465	68.5
Manassas City, Virginia	129,452	310,749	140.0	30,822	60,931	97.7
Manassas Park City, Virginia	60,464	113,037	86.9	27,484	49,147	78.8
Prince William County, Virginia	1,089,568	2,153,640	97.7	30,016	46,215	54.0
Charles County, Maryland	502,905	1,130,285	124.8	24,413	43,141	76.7
Montgomery County, Maryland	6,121,113	9,311,714	52.1	30,333	41,869	38.0
Prince George's County, Maryland	5,546,502	8,653,322	56.0	24,951	37,460	50.1
District of Columbia	6,203,867	8,429,980	35.9	22,284	30,902	38.7
Total SMSA	\$29,528,528	\$47,704,998	61.6%	\$27,200	\$41,164	51.3%

*Represents income earned during the years shown.

Source: Sales and Marketing Management, 1980 Survey of Buying Power, July 1980; and 1980 Survey of Buying Power, Part II, October 1980.

ADJUSTED GROSS INCOME* ON ALL TAX RETURNS BY JURISDICTION

Tax Year 1978

Jurisdiction	Total Returns**	Median AGI Per Return	Average AGI per Return
Fairfax County	224,040	\$17,775	\$21,980
Arlington County	75,957	14,821	19,885
Alexandria City	58,044	14,252	18,695
Fairfax City	7,258	14,844	18,988
Falls Church City	8,134	14,059	18,739
Loudoun County	21,286	15,870	19,321
Prince William County	44,335	17,116	18,620
Manassas City	6,317	15,336	17,526
Manassas Park City	1,911	13,669	14,267

*Data represent adjusted gross income earned during 1978.

**The number of returns is adjusted by counting two married separate returns as equivalent to one married joint or combined return.

Source: Tayloe Murphy Institute, Distribution of Virginia Adjusted Gross Income by Income Class, 1978.

ADJUSTED GROSS INCOME* ON INDIVIDUAL TAX RETURNS BY JURISDICTION

Tax Year 1978

Jurisdiction	Individual Returns **	Median AGI Per Return	Average AGI per Return
Fairfax County	106,579	\$ 7,306	\$ 9,716
Arlington County	47,572	11,241	12,927
Alexandria City	37,328	10,957	12,509
Fairfax City	3,753	7,146	9,077
Falls Church City	4,664	8,680	10,816
Loudoun County	8,733	6,656	8,864
Prince William County	17,088	6,133	7,937
Manassas City	2,734	6,803	8,429
Manassas Park City	787	5,988	7,097

*Data represent adjusted gross income earned during 1978.

**Data include only returns filed by persons who are single, divorced, separated or widowed.

Source: Tayloe Murphy Institute, Distribution of Virginia Adjusted Gross Income by Income Class, 1978.

ADJUSTED GROSS INCOME* ON MARRIED TAX RETURNS BY JURISDICTION

Tax Year 1978

Jurisdiction	Married Returns**	Median AGI Per Return	Average AGI per Return
Fairfax County	117,461	\$30,653	\$33,108
Arlington County	28,385	26,317	31,548
Alexandria City	20,716	24,691	29,841
Fairfax City	3,505	27,644	29,560
Falls Church City	3,470	25,023	29,388
Loudoun County	12,553	24,109	26,597
Prince William County	27,247	24,209	25,320
Manassas City	3,583	22,679	24,467
Manassas Park City	1,124	19,082	19,288

*Data represent adjusted gross income earned during 1978.

**Data include only returns filed by persons having a married marital status.

Source: Tayloe Murphy Institute, Distribution of Virginia Adjusted Gross Income by Income Class, 1978.

TOTAL PERSONAL INCOME (MILLIONS OF DOLLARS) BY JURISDICTION

Washington SMSA, 1974 - 1979

Jurisdiction	Year					
	1974	1975	1976	1977	1978	1979
Fairfax County, Virginia	\$3,668.6	\$4,155.6	\$4,718.0	\$5,377.0	\$5,985.4	\$6,688.6
Alexandria City, Virginia	876.1	979.2	1,065.8	1,161.8	1,287.3	1,401.0
Arlington County, Virginia	1,538.6	1,662.6	1,858.9	2,007.6	2,175.7	2,403.6
Fairfax City, Virginia	160.4	178.3	199.4	216.8	234.4	258.8
Falls Church City, Virginia*	112.7	124.7	141.3	117.5	129.0	141.9
Loudoun County, Virginia	296.1	335.9	386.8	430.2	487.7	552.3
Manassas City, Virginia	--	--	96.3	115.6	130.9	151.3
Manassas Park City, Virginia	--	--	44.6	51.0	58.5	66.3
Prince William County, Virginia	734.3	839.6	794.5	888.1	1,020.2	1,148.6
Charles County, Maryland	290.3	326.2	375.2	422.9	484.0	543.0
Montgomery County, Maryland	4,779.8	5,240.6	5,852.4	6,309.0	7,076.5	7,752.0
Prince George's County, Maryland	4,067.5	4,410.4	4,814.4	5,117.5	5,645.8	6,118.3
District of Columbia	4,734.0	5,188.7	5,577.9	5,938.2	6,319.8	6,852.3

*The estimates for Falls Church City were overstated for years prior to 1977 due to geographic coding errors.

Source: Bureau of Economic Analysis, U.S. Department of Commerce.

PER CAPITA PERSONAL INCOME BY AREA

1970 to 1979

Year	Fairfax County	Northern Virginia	Washington SMSA	Virginia
1970	\$ 4,975	\$ 5,116	\$ 4,909	\$3,677
1971	5,570	5,663	5,337	3,973
1972	5,854	6,122	5,822	4,386
1973	6,554	6,759	6,404	4,848
1974	7,254	7,480	7,065	5,339
1975	8,084	8,254	7,745	5,770
1976	8,895	9,107	8,547	6,333
1977	10,080	10,060	9,335	6,955
1978	10,858	11,058	10,254	7,666
1979	11,909	12,140	11,313	8,588

Source: Tayloe Murphy Institute, Personal Income Estimates for Virginia Counties and Cities, 1973 to 1978, May 1980.
Bureau of Economic Analysis, U.S. Department of Commerce.

PER CAPITA PERSONAL INCOME BY JURISDICTION

Washington SMSA, 1974 - 1979

Jurisdiction	Year					
	1974	1975	1976	1977	1978	1979
Fairfax County, Virginia	\$ 7,254	\$ 8,084	\$ 8,895	\$10,080	\$10,858	\$11,909
Alexandria City, Virginia	8,161	9,166	10,060	11,144	12,397	13,969
Arlington County, Virginia	9,963	10,788	11,923	13,154	14,424	16,027
Fairfax City, Virginia	7,345	8,100	9,198	10,325	11,282	12,694
Falls Church City, Virginia*	10,691	12,454	14,781	12,541	13,773	15,480
Loudoun County, Virginia	6,399	6,879	7,643	8,307	9,145	10,340
Manassas City, Virginia	--	--	7,968	8,977	9,966	11,077
Manassas Park City, Virginia	--	--	5,231	5,922	6,556	7,316
Prince William County, Virginia	5,197	5,717	6,252	6,825	7,476	8,343
Charles County, Maryland	4,992	5,401	6,003	6,516	7,157	7,758
Montgomery County, Maryland	8,565	9,161	10,215	11,018	12,304	13,541
Prince George's County, Maryland	5,941	6,485	7,123	7,645	8,490	9,287
District of Columbia	6,568	7,292	7,967	8,670	9,418	10,452
Washington SMSA	7,065	7,745	8,547	9,335	10,254	11,313

*The estimates for Falls Church City were overstated for years prior to 1977 due to geographic coding errors.

Source: Bureau of Economic Analysis, U.S. Department of Commerce.

ESTIMATES OF URBAN FAMILY BUDGETS*

Washington SMSA, 1980

Consumption Components	Budget Levels		
	Lower	Intermediate	Higher
Total Budget	\$15,392	\$25,203	\$37,398
Family Consumption	11,927	17,770	24,275
Total Food	4,482	5,864	7,377
Food at Home	3,860	4,954	5,939
Food Away from Home	622	910	1,438
Total Housing	3,063	5,430	8,070
Shelter	2,390	4,237	5,579
Renter	2,390	2,858	4,130
Homeowner	N/A	4,696	5,835
Furnishings & Operations	673	1,193	2,186
Total Transportation	1,114	2,112	2,759
Automobile Owners	1,525	2,191	2,759
Clothing	882	1,265	1,893
Personal Care	366	516	765
Medical Care	1,349	1,354	1,408
Other Family Consumption	671	1,229	2,003
Other Items	604	985	1,661
Social Security and Disability Payments	944	1,545	1,588
Personal Income Taxes	1,917	4,903	9,874

*Budget levels represent the costs of three hypothetical lists of goods and services that were specified to portray three relative standards of living--described as lower, intermediate, and higher--and do not represent how families actually do or should spend their money.

A "family" consists of an employed husband, age 38, a wife not employed outside the home, an 8-year old girl, and a 13-year old boy.

Source: U.S. Department of Labor, Bureau of Labor Statistics, News Release, April 22, 1981, "Autumn 1980 Urban Family Budgets and Comparative Indexes for Selected Urban Areas."

INDEXES OF COMPARATIVE COSTS FOR FAMILIES BY BUDGET LEVEL*

Washington SMSA, 1980

Consumption Components	Budget Levels		
	Lower	Intermediate	Higher
Total Budget	110	109	109
Total Consumption	106	105	104
Total Food	104	105	105
Food at Home	104	106	107
Total Housing	117	106	104
Renter	122	113	104
Homeowner	N/A	105	104
Total Transportation	96	100	100
Automobile Owners	98	98	N/A
Clothing	97	98	100
Personal Care	104	110	115
Medical Care	104	104	104
Other Family Consumption	112	111	110
Personal Income Taxes	143	130	125

*An index of 100 represents the United States urban average at each budget level. Deviation from this average denotes the difference in Washington area budget levels -- either higher or lower -- from the national average. For example, an index of 105 denotes that the cost for an item in the Washington SMSA is five percent higher than the national average, while an index of 95 denotes a budget level that is five percent lower than the national average.

A "family" consists of an employed husband, age 38, a wife not employed outside the home, and 8-year old girl, and a 13-year old boy.

Source: U.S. Department of Labor, Bureau of Labor Statistics, News Release, April 22, 1981, "Autumn 1980 Urban Family Budgets and Comparative Indexes for Selected Urban Areas."

RELATIVE PRICE LEVEL INDICES FOR CATEGORIES OF EXPENDITURES

IN EIGHT VIRGINIA METROPOLITAN AREAS

1980

(Average for All Areas = 100)

Consumption Component	Metropolitan Area							
	Northern Virginia	Charlottesville	Lynchburg	Newport News/Hampton	Norfolk/Virginia Beach/Portsmouth	Petersburg/Colonial Heights/Hopewell	Richmond	Roanoke
Food and Beverages	108	97	96	97	103	96	101	102
Housing	137	108	92	90	101	86	99	88
Apparel and Upkeep	111	100	97	96	96	96	106	98
Transportation	103	101	99	98	101	101	100	97
Other Goods and Services	115	97	100	95	97	95	101	100
Total Consumption	121	103	95	93	101	92	100	94

Source: Tayloe Murphy Institute, Consumer Price Indicators for Virginia Metropolitan Areas, 1980.

CONSUMER PRICE INDEX

U.S. City and Washington SMSA Average

(1967 = 100)
1963 to 1980 (Unrevised)

Year	U.S. City		Washington SMSA	
	Consumer Price Index	Percent Increase	Consumer Price Index	Percent Increase
1963	91.7	---	91.3	---
1964	92.9	1.3%	92.8	1.6%
1965	94.5	1.7%	94.1	1.4%
1966	97.2	2.9%	97.3	3.4%
1967	100.0	2.9%	100.0	2.8%
1968	104.2	4.2%	104.7	4.7%
1969	109.8	5.4%	111.2	6.2%
1970	116.3	5.9%	117.6	5.8%
1971	121.2	4.2%	122.7	4.3%
1972	125.3	3.4%	126.9	3.4%
1973	133.1	6.2%	135.0	6.4%
1974	147.7	11.0%	150.0	11.1%
1975	161.2	9.1%	161.6	7.7%
1976	170.5	5.8%	171.1	5.9%
1977	181.5	6.5%	183.0	7.0%
1978	195.3	7.6%	198.3	8.4%
1979	217.4	11.3%	218.6	10.2%
1980	246.8	13.5%	243.7	11.5%

Source: The Consumer Price Index, U.S. Bureau of Labor Statistics.

ESTIMATED WEIGHTED AVERAGE THRESHOLDS AT THE POVERTY LEVEL IN 1980 BY SIZE OF
FAMILY AND SEX OF HOUSEHOLDER, BY FARM/NONFARM RESIDENCE

Size of Family	Total	Nonfarm			Farm		
		Total	Families with Female Householder, No Husband Present*	All Other Families**	Total	Families with Female Householder, No Husband Present*	All Other Families**
1 Person (unrelated individual)	\$ 4,180	\$ 4,190	\$ 4,040	\$ 4,380	\$ 3,560	\$ 3,410	\$ 3,670
Under 65 Years	4,280	4,290	4,110	4,440	3,690	3,490	3,770
65 Years and Over	3,940	3,950	3,940	3,990	3,360	3,350	3,390
2 Persons	5,340	5,360	5,300	5,380	4,530	4,450	4,530
Householder Under 65 Years	5,510	5,540	5,410	5,570	4,720	4,570	4,730
Householder 65 Years and Over	4,950	4,980	4,950	4,990	4,230	4,180	4,240
3 Persons	6,540	6,570	6,390	6,610	5,580	5,310	5,590
4 Persons	8,380	8,410	8,380	8,420	7,180	7,110	7,190
5 Persons	9,920	9,960	9,870	9,970	8,510	8,520	8,510
6 Persons	11,180	11,250	11,170	11,260	9,560	9,430	9,570
7 Persons or More	13,860	13,940	13,660	13,990	11,960	11,550	11,970

*Includes female unrelated individuals.

**Includes male unrelated individuals.

Source: U.S. Department of Commerce Bureau of the Census.

VI RESIDENTIAL CHARACTERISTICS

DWELLING UNIT INVENTORY* BY PLANNING DISTRICT

Fairfax County, 1981

Planning District	Housing Type								Total Units
	Single Family	Duplex	Townhouse	Multiplex	Garden Apartments	Mid-Rise Apartments	Hi-Rise Apartments	Mobile Homes	
Annandale	15,385	19	2,479	256	4,627	513	471	---	23,750
Baileys	4,864	18	196	---	4,690	759	3,889	---	14,416
Bull Run	5,324	7	1,030	726	296	---	---	---	7,884
Fairfax	6,435	7	1,522	161	3,342	1	---	256	11,724
Jefferson	8,193	8	707	---	5,135	150	899	---	15,092
Lincolnia	1,376	11	804	---	1,882	173	---	---	4,246
Lower Potomac	1,231	13	559	291	521	---	---	---	2,615
McLean	14,450	8	928	200	2,162	553	1,728	---	20,029
Mount Vernon	14,176	1,702	1,429	1,437	10,015	---	2,524	1,716	32,999
Pohick ¹	16,770	226	6,834	414	245	---	---	---	24,489
Rose Hill	6,941	9	138	---	556	---	---	---	7,644
Springfield	7,231	---	2,830	---	1,634	---	---	---	11,695
Upper Potomac ²	12,852	57	6,440	---	6,723	240	224	---	26,536
Vienna ³	11,398	15	2,414	275	2,038	274	553	---	16,967
County Total	126,626	2,100	28,310	3,760	43,866	2,663	10,288	2,473	220,086

*Figures exclude group quarters which are composed of Lorton Reformatory, Fort Belvoir, nursing homes, and religious quarters.

¹Includes the Town of Clifton.

²Includes the Town of Herndon.

³Includes the Town of Vienna.

Source: Fairfax County Office of Research and Statistics.

HOUSING CHARACTERISTICS, FAIRFAX COUNTY, 1950, 1960, 1970

	1950		1960		Percent of Change 1950-1960	1970		Percent of Change 1960-1970
	Number	Percent	Number	Percent		Number	Percent	
<u>All Dwelling Units</u>	26,558		69,184		161	130,787		89
All Occupied Units	24,317	100.0	65,245	100.0	168	126,516	100.0	94
Owner Occupied	15,791	64.9	49,933	76.5	216	81,532	64.4	63
Renter Occupied	8,526	35.1	15,312	23.5	80	44,984	35.6	194
<u>Type of Structure</u>								
1-Family Detached	19,011	71.6	57,823	83.6		95,866	73.3	58
1-Family Attached	73	0.3	2,972	4.3				
1 & 2 Family Semidetached	1,112	4.2	--	--				
2-Family	812	3.1	554	.8		1,320	1.0	138
3-4 Family	1,048	3.9	686	1.0		1,405	1.1	105
5 or More	3,534	13.3	5,708	8.3	62	30,482	23.3	434
Trailers	968	3.6	1,438	2.1	49	1,695	1.3	18
All Year-Round Units	26,558	100.0	69,181	100.0	161	130,768	100.0	89
<u>Number of Persons</u>								
1-Person Household	905	3.7	2,537	3.9	180	9,972	7.9	293
2-Person Household	15,670	23.3	12,343	18.9	118	30,624	24.2	148
3-Person Household	5,988	24.6	13,091	20.1	119	25,915	20.5	98
4-Person Household	5,904	24.3	16,703	25.6	183	28,279	22.4	69
5-Person Household	3,043	12.5	11,137	17.1	266	17,401	13.8	56
6-Person Household	1,403	5.8	5,468	8.4	290	8,454	6.7	55
7-Person Household	657	2.7	2,235	3.4	240	3,889	3.1	74
8 or More	747	3.1	1,731	2.7	132	1,982	1.6	15
<u>Median Number of Persons</u>								
All Occupied Units	3.4	--				3.4		
Owner-Occupied	3.5	--	3.8			3.7		
Renter-Occupied	3.4	--	3.6			2.7		

Sources: U.S. Bureau of the Census, U.S. Census of Housing, 1950, 1960, 1970; 1950, Vol. I: General Characteristics, Chapter 46, Virginia, H-A46; 1960, Vol. I: States and Small Areas, Virginia, Final Report HC(1)-48; 1970, Detailed Housing Characteristics, Final Report HC(1)-B48, Virginia.

Note: 1950 Housing Count includes Fairfax City.

CONDOMINIUM CONVERSIONS AS PERCENTAGE OF TOTAL
CONDOMINIUM HOUSING INVENTORY BY JURISDICTION

Washington Metropolitan Region, 1980

Jurisdiction	Total Condominium Units	Number of Converted Units	Converted Units as Percentage of All Condominium Units
Fairfax County	18,702	6,328	33.8%
Arlington County	8,852	6,866	77.6
Loudoun County	1,580	418	26.5
Prince William County	1,423	86	6.0
Alexandria City	8,250	3,947	47.8
Falls Church City	220	200	90.9
Fairfax City	480	480	100.0
Montgomery County	18,348	11,535	62.9
Prince George's County	10,561	5,898	55.8
District of Columbia	<u>15,824</u>	<u>12,253</u>	77.4
Total Region	84,240	48,011	57.0

Source: Metropolitan Washington Council of Governments, Department of Human Resources, Condominium Housing in the Washington Metropolitan Area, July 1980, July 1980.

ESTIMATED MEDIAN AND AVERAGE HOUSING VALUE OF OWNED UNITS

BY HOUSING TYPE AND PLANNING DISTRICT

Fairfax County, 1981

Planning District	Median Value				Average Value			
	Single Family	Town-house	Condo-minium	Total	Single Family	Town-house	Condo-minium	Total
Annandale	\$104,400	\$ 94,300	\$43,400	\$ 99,700	\$109,600	\$ 92,100	\$45,800	\$101,800
Bailey's	111,200	108,400	70,600	104,100	125,300	108,600	85,900	115,100
Bull Run	93,100	60,700	---	86,500	95,100	60,900	---	86,500
Fairfax	124,800	85,200	59,000	112,800	129,500	90,600	57,500	117,200
Jefferson	85,600	87,100	47,200	82,700	91,700	94,500	49,500	86,300
Lincolnia	88,800	90,000	---	89,000	95,600	95,300	---	95,600
Lower Potomac	78,200	64,500	---	71,500	87,700	63,400	---	77,300
McLean	132,600	132,000	88,500	127,200	149,500	132,700	91,200	141,200
Mount Vernon	108,300	58,100	42,800	91,700	113,000	67,700	43,000	98,100
Pohick ¹	114,000	80,600	---	104,100	117,900	80,400	---	106,400
Rose Hill	89,200	96,700	---	39,400	93,500	96,800	---	93,500
Springfield	92,200	79,900	46,800	87,300	97,100	83,200	46,100	90,300
Upper Potomac ²	120,600	76,100	44,200	92,500	130,500	79,000	44,800	106,300
Vienna ³	107,900	88,500	45,000	102,400	111,900	90,900	46,600	107,700
Total County	\$106,800	\$ 79,800	\$51,500	\$ 97,700	\$115,800	\$ 81,700	\$68,100	\$105,500

¹Includes the Town of Clifton.
²Includes the Town of Herndon.
³Includes the Town of Vienna.

HOUSING VALUE

FAIRFAX COUNTY, 1950, 1960, 1970

Value	1950	1960	1970
Less than \$5,000	1,299	783	149
\$5,000 to \$9,999	2,483	1,989	425
\$10,000 to \$14,999	4,967	9,659	1,071
\$15,000 to \$19,999	1,577	14,785	4,838
\$20,000 to \$24,999	1,407	10,027	8,433
\$25,000 to \$34,999		6,922	23,239
\$35,000 or More		2,696	39,488
Total Owner-Occupied	11,733	46,861	77,643
Median	\$12,048	\$18,700	\$35,300

Source: U.S. Bureau of the Census, U.S. Census of Housing, 1950, 1960, 1970. 1950, Vol. I: General Characteristics, Chapter 46, Virginia H-A46; 1960, Vol. I: States and Small Areas, Virginia, Final Report HC(1)-48; 1970, Detailed Housing Characteristics, Final Report HC(1)-B48, Virginia.

- Notes:
1. 1950 data is for owner-occupied, one-family dwellings only. Value category \$20,000 to \$24,999 includes all one-family dwellings valued at \$20,000 or more.
 2. 1960 data uses value categories \$5,000 to \$9,900 rather than \$5,000 to \$9,999.
 3. 1970 data is for single-family dwellings only on less than 10 acres and with no business attached.

ESTIMATED PRICE DISTRIBUTION OF OWNED HOUSING UNITS

Fairfax County, 1973 to 1981

Price	Year								
	1973	1974	1975	1976	1977	1978	1979	1980	1981
Under \$30,000	7.7%	7.2%	5.9%	3.5%	3.7%	3.5%	2.3%	1.6%	0.9%
30,000 - 34,999	5.4	3.9	3.4	3.1	2.6	2.5	1.9	0.9	0.5
35,000 - 39,999	7.7	6.2	5.4	4.5	3.6	3.4	2.4	1.7	0.9
40,000 - 49,999	23.2	20.2	15.2	13.3	12.0	9.3	7.1	4.4	3.3
50,000 - 59,999	25.0	24.4	22.1	20.2	19.4	16.3	10.6	6.7	4.4
60,000 - 69,999	15.8	18.0	18.9	20.4	20.1	18.2	17.0	10.0	6.5
70,000 - 79,999	7.3	9.3	13.1	14.8	16.5	17.2	16.4	14.6	10.6
80,000 - 89,999	3.3	4.6	7.7	9.1	10.0	12.0	13.0	14.1	13.6
90,000 - 99,999	1.6	2.2	3.6	4.9	5.0	7.3	10.3	12.4	12.1
\$100,000 or More	3.0	3.7	4.7	6.2	7.1	10.3	19.0	33.6	47.2
Total	100.0%	100.0%	100.0%	100.0%	100.0%	100.0%	100.0%	100.0%	100.0%
Median	\$53,000	\$55,000	\$59,100	\$62,600	\$64,600	\$68,200	\$75,200	\$87,200	\$97,700

Source: Fairfax County Office of Research and Statistics.

AVERAGE SALES PRICE OF HOUSING UNITS SOLD

Fairfax County, 1975 to 1980

Type of Unit	Average Sales Price					
	1975	1976	1977	1978	1979	1980
Single-Family Detached	\$67,361	\$72,112	\$78,225	\$86,192	\$101,005	\$103,654
Single-Family Attached*	49,252	51,179	54,706	59,082	66,270	72,439
Total	\$61,946	\$65,765	\$70,859	\$77,167	\$ 83,783	\$ 92,044

*Includes duplexes, townhouses, townhouse condominiums, and multiplex condominiums.

Source: Fairfax County Office of Research and Statistics.

HOUSING UNITS SOLD BY STRUCTURE TYPES

Fairfax County, 1975 to 1980

Type of Unit	Housing Units Sold					
	1975	1976	1977	1978	1979	1980
Single-Family Detached	8,394	9,633	11,672	12,491	12,683	12,587
Single-Family Attached*	3,581	4,192	5,322	6,234	6,882	7,454
Total	11,975	13,825	16,994	18,725	19,565	20,041

*Includes duplexes, townhouses, townhouse condominiums, and multiplex condominiums.

Source: Fairfax County Office of Research and Statistics.

VALUE OF OWNER-OCCUPIED HOUSING UNITS BY NUMBER OF BEDROOMS

FAIRFAX COUNTY, 1975

Value	Number of Bedrooms				
	1	2	3	4	5+
	%	%	%	%	%
\$ 0 - 19,999	18.9	7.5	1.7	0	1.0
20 - 29,999	0	11.0	2.6	0.2	0
30 - 39,999	46.7	43.9	12.1	2.0	0.6
40 - 49,999	34.4	18.1	24.8	7.7	0
50 - 59,999	0	5.2	36.6	22.4	7.1
60 - 74,999	0	8.4	16.3	45.0	29.0
75 - 99,999	0	3.3	3.6	19.6	42.7
\$100,000 or More	0	2.6	2.3	3.1	19.6
Total	100.0	100.0	100.0	100.0	100.0

Source: Washington Center for Metropolitan Studies, 1975, unpublished tabulations based on sample.

MONTHLY GROSS RENT CHARACTERISTICS

Fairfax County

1960, 1970

Monthly Gross Rent	<u>Renter Occupied Dwellings</u>	
	<u>1960</u>	<u>1970</u>
Less than \$30	68	12
\$30 to \$39	75	9
\$40 to \$59	697	110
\$60 to \$99	5,250	1,393
\$100 to \$149	5,004	11,922
\$150 to \$199	2,197	17,488
\$200 or More	1,064	11,171
Rent Free or Not Reported	<u>805</u>	<u>1,895</u>
Total Renter Occupied Dwellings	15,160	44,000
Median Rent	\$105	\$172

Source: U.S. Bureau of the Census, U.S. Census of Housing, 1960 and 1970.

MONTHLY GROSS RENT OF RENTER-OCCUPIED HOUSING UNITS

BY NUMBER OF BEDROOMS

FAIRFAX COUNTY, 1975

Monthly Gross Rent	Number of Bedrooms			
	1	2	3	4
		Percents		
\$ 0 - 99	2.1	2.1	0	3.5
100 - 149	9.4	1.1	2.4	3.0
150 - 199	54.6	19.9	15.1	5.4
200 - 249	27.8	56.4	10.0	4.0
250 - 299	6.1	13.3	26.2	10.8
300 - 399	0	7.2	41.7	52.6
\$400 or more	0	0	4.6	20.7
Total	100.0	100.0	100.0	100.0

Source: Washington Center for Metropolitan Studies, 1975, unpublished tabulations based on sample.

RENT-INCOME RATIO BY AGE OF HOUSEHOLD HEAD

FAIRFAX COUNTY, 1975

Rent/Income Ratio	Age of Head					
	14-24	25-34	35-44	45-54	55-64	65+
0 - 24.9%	51.9	55.9	72.7	61.2	75.6	20.1
25 - 34.9%	22.1	27.3	12.6	28.9	19.0	8.0
35% or More	26.0	16.8	14.7	9.9	5.4	71.9
Total	100.0	100.0	100.0	100.0	100.0	100.0

Source: Washington Center for Metropolitan Studies, 1975, unpublished tabulations based on sample.

RENT-INCOME RATIO BY HOUSEHOLD INCOME LEVEL

FAIRFAX COUNTY, 1975

Rent/Income Ratio	Income Level					
	\$ 0 3,999	4,000- 7,999	8,000- 9,999	10,000- 14,999	15,000- 24,999	25,000 +
0 - 24.9%	6.9	5.2	35.1	73.8	95.4	96.3
25 - 34.9%	0	37.5	50.7	20.9	4.6	3.7
35% or More	93.1	57.3	14.2	5.3	0	0
Total	100.0	100.0	100.0	100.0	100.0	100.0

Source: Washington Center for Metropolitan Studies, 1975, unpublished tabulations based on sample.

AVERAGE MONTHLY RENT OF RENTAL HOUSING UNITS*

BY PLANNING DISTRICTS

Fairfax County, 1976 to 1981

Planning District	Average Monthly Rent					
	1976	1977	1978	1979	1980	1981
Annandale	\$259	\$281	\$295	\$341	\$377	\$410
Baileys	236	253	268	293	320	356
Bull Run	250	265	271	304	320	348
Fairfax	286	285	308	338	362	411
Jefferson	237	252	265	297	319	353
Lincolnia	269	290	306	334	366	396
Lower Potomac	226	223	266	266	291	328
McLean	288	307	321	343	367	411
Mount Vernon	238	253	267	295	316	344
Pohick ¹	---	---	---	378	411	451
Rose Hill	204	226	230	266	287	324
Springfield	268	275	297	302	330	376
Upper Potomac ²	264	280	295	319	330	359
Vienna ³	251	270	278	314	336	357
County Total	\$251	\$266	\$281	\$310	\$334	\$367

*Figures include only those units located in major rental housing projects having five or more units.

¹Includes the Town of Clifton.

²Includes the Town of Herndon.

³Includes the Town of Vienna.

Source: Fairfax County Office of Research and Statistics.

HOUSING UNITS AND VACANCY RATES

By Area Jurisdictions, 1980

Jurisdiction	Housing Units	Households	Vacant Housing Units	Vacancy Rate
Fairfax County	215,739	205,166	10,573	4.9%
Arlington County	75,182	71,615	3,567	4.7
Alexandria	52,041	49,004	3,037	5.8
Loudoun County	19,742	18,653	1,089	5.5
Prince William County*	53,932	50,696	3,236	6.0
Falls Church City	4,503	4,250	253	5.6
Fairfax City	7,050	6,881	169	2.4
Montgomery County	216,221	207,195	9,026	4.2
Prince George's County	236,465	224,789	11,676	4.9
District of Columbia	<u>276,707</u>	<u>252,952</u>	<u>23,755</u>	8.6
Total	1,157,582	1,091,201	66,381	5.7%

*Contains independent Cities of Manassas and Manassas Park.

Source: 1980 U.S. Census.

RENTAL HOUSING UNIT VACANCY RATES BY JURISDICTION

Suburban Metropolitan Washington Region, 1979

Jurisdiction	Number of Units		Percent of Surveyed Units Vacant
	Surveyed	Vacant	
Fairfax County	43,364	1,827	4.12%
Alexandria City	16,221	533	3.29
Arlington County	23,974	328	1.37
Fairfax City	1,515	55	3.63
Falls Church City	773	16	2.07
Loudoun County	1,148	12	1.05
Prince William County	4,744	267	5.63
Montgomery County	50,225	1,670	3.33
Prince George's County	53,327	2,464	4.62
Total Suburban Region	195,291*	7,172	3.67%

*Figures include only those units located in major rental housing projects having four or more units whose managements responded to a survey conducted by the Metropolitan Washington Council of Governments.

Source: Department of Human Resources, Metropolitan Washington Council of Governments.

RENTAL HOUSING UNIT VACANCY RATE

Fairfax County, 1974 to 1981

Year	Vacancy Rate
1974	3.6%
1975	4.4
1976	3.5
1977	3.9
1978	4.1
1979	4.1
1980	4.1
1981	2.6

Source: Fairfax County Office
of Research and Statistics.

RENTAL HOUSING UNIT VACANCY RATES

BY STRUCTURE TYPES

Fairfax County, 1981

<u>Structure Type*</u>	<u>Number of Units**</u>	<u>Number of Vacancies</u>	<u>Vacancy Rate</u>
Garden Apartment	34,564	993	2.9%
Elevator Apartment	5,820	99	1.7
Townhouse	2,269	27	1.2
County Total	42,653	1,119	2.6%

*Garden Apartment -- Multi-family structure having one to four stories.
Elevator Apartment -- Multi-family structure having more than four stories.
Townhouse -- Single-family-attached structure.

**Figures include only those units located in major rental housing projects having five or more units.

Source: Fairfax County Office of Research and Statistics.

RESIDENTIAL CONSTRUCTION ACTIVITY

Fairfax County, January 1981

Stage in Development Process	Number of Units	Percent of Proposed Units
Under Construction	3,573	5.4%
Building Permit Issued, but Not Started	3,579	5.2
Site Plan Approved	14,897	21.8
Site Plan Submitted	31,455	45.9
Rezoning Granted	5,287	7.7
Rezoning Pending	9,596	14.0
Total Construction Activity	68,387	100.0%

Source: Fairfax County Office of Research and Statistics,
Standard Reports, 1981.

RESIDENTIAL CONSTRUCTION ACTIVITY
UNITS AUTHORIZED BY BUILDING PERMITS*
Fairfax County, FY1971 to FY1980

Fiscal Year	Single-Family Units**		Multi-Family Units	
	Number	Estimated Cost	Number	Estimated Cost
1971	6,566	\$129,667,400	3,867	\$47,926,437
1972	8,827	174,307,591	5,573	59,425,057
1973	10,681	220,439,663	5,023	67,364,858
1974	5,882	156,686,570	2,618	35,101,602
1975	1,499	51,750,866	1,501	13,706,368
1976	3,976	131,156,696	304	3,703,000
1977	6,496	230,553,667	2,404	41,638,500
1978	8,044	305,602,696	813	12,994,364
1979	7,709	306,262,619	1,486	47,735,939
1980	6,356	277,379,509	535	13,144,930

*Applies to permits issued for new construction.

**The single-family category includes single-family, duplex, townhouse, and multiplex housing units. The multi-family category includes garden and elevator apartment units.

Source: Department of Environmental Management, Division of Inspection Services, Fairfax County, Virginia.

NUMBER OF NEW HOUSING UNITS AUTHORIZED BY BUILDING PERMITS

Washington SMSA,* 1975 to 1980

Jurisdiction	Calendar Year					
	1975	1976	1977	1978	1979	1980
Fairfax County, Virginia*	3,251	5,996	10,015	8,361	8,345	6,563
Arlington County, Virginia	189	418	985	722	656	563
Prince William County, Virginia**	800	1,724	2,294	2,997	2,155	1,643
Loudoun County, Virginia	224	492	904	743	463	342
Alexandria City, Virginia	987	682	544	635	330	568
Montgomery County, Maryland***	1,715	3,460	3,797	4,565	4,588	5,683
Prince George's County, Maryland	1,453	2,049	3,260	2,237	2,459	1,706
District of Columbia	436	1,968	2,194	2,173	1,840	2,642
Washington SMSA	9,055	16,789	23,993	22,433	20,836	19,710

*Includes the cities of Fairfax and Falls Church.

**Includes the cities of Manassas and Manassas Park.

***Includes the cities of Rockville and Gaithersburg.

Source: Department of Human Resources, Metropolitan Washington Council of Governments.

EFFECTIVE INTEREST RATES* FOR HOUSING PURCHASES

FOR ALL TYPES OF LENDING INSTITUTIONS

United States and Washington SMSA, 1965 to 1980

Year	Purchase of New Home		Purchase of Existing Home	
	United States	Washington SMSA**	United States	Washington SMSA**
1965	5.81		5.95	
1966	6.25		6.41	
1967	6.46		6.52	
1968	6.97		7.03	
1969	7.81		7.82	
1970	8.45		8.36	
1971	7.74		7.67	
1972	7.60		7.51	
1973	7.95	8.23	8.01	8.20
1974	8.92	8.65	9.01	8.87
1975	9.01	9.10	9.21	9.14
1976	8.99	9.06	9.11	9.08
1977	9.01	8.62	9.02	8.97
1978	9.54	9.58	9.58	9.67
1979	10.77	10.75	10.92	10.88
1980	12.65	13.19***	12.95	13.19***

*The effective interest rate includes the contract interest rate and additional fees (such as points) assumed by the buyer at the time of purchase amortized throughout the projected life of the loan.

**Data for the Washington SMSA are not available for 1965 through August 1973. Data for 1973 reflects monthly rates for September through December.

***Data for Washington SMSA is as of April for year cited, and reflects purchase of new and existing homes.

Source: Federal Home Loan Bank Board, Journal, monthly, May 1981.

MONTHLY PRINCIPAL AND INTEREST PAYMENTS OVER 30 YEARS

Mortgage Amount	10%	10½%	11%	11½%	12%	12½%	13%	13½%	14%	14½%	15%	15½%	16%
\$ 20,000	\$176	\$183	\$190	\$194	\$ 206	\$ 214	\$ 221	\$ 229	\$ 237	\$ 245	\$ 253	\$ 261	\$ 269
\$ 24,000	211	220	229	233	247	256	266	275	284	294	303	313	323
\$ 28,000	246	256	267	272	288	299	310	321	332	343	354	365	377
\$ 32,000	281	293	305	311	329	342	354	367	379	392	405	417	430
\$ 36,000	316	329	343	350	370	384	398	413	427	441	455	470	484
\$ 40,000	351	366	381	388	411	427	443	458	474	490	506	522	538
\$ 44,000	386	403	419	427	453	470	487	504	521	539	557	574	592
\$ 48,000	421	439	457	466	494	512	531	550	569	588	607	626	646
\$ 52,000	457	476	495	505	535	555	575	596	616	637	658	678	699
\$ 56,000	492	512	533	544	576	598	620	642	664	686	708	731	753
\$ 60,000	527	549	571	583	617	641	664	688	711	735	759	783	807
\$ 64,000	562	585	610	622	658	683	708	733	758	784	810	835	861
\$ 68,000	597	622	648	660	699	726	753	779	806	833	860	887	914
\$ 72,000	632	659	686	699	741	769	797	825	853	882	910	939	968
\$ 76,000	667	695	724	738	782	811	841	871	901	931	961	991	1,022
\$ 80,000	702	732	762	777	823	854	885	917	948	980	1,012	1,044	1,076
\$ 84,000	738	768	800	816	864	897	930	963	995	1,029	1,063	1,096	1,130
\$ 88,000	773	805	838	855	905	939	974	1,008	1,043	1,078	1,113	1,148	1,183
\$ 92,000	808	842	876	894	946	982	1,018	1,054	1,090	1,127	1,163	1,200	1,237
\$ 96,000	843	878	914	932	987	1,025	1,062	1,100	1,138	1,176	1,214	1,252	1,291
\$100,000	878	915	952	971	1,029	1,068	1,107	1,146	1,185	1,225	1,265	1,305	1,345

Source: New Homes Guide.

VII NONRESIDENTIAL CHARACTERISTICS

PROPORTION OF ACREAGES ZONED FOR COMMERCIAL AND INDUSTRIAL USES

Fairfax County, 1964 to 1981

Year	Acres Zoned Commercial and Industrial	Percent of Total Acreage
1964	5,793	2.4%
1965	6,106	2.6
1966	6,272	2.6
1967	6,512	2.7
1968	6,780	2.8
1969	7,450	3.1
1970	7,707	3.2
1971	8,270	3.4
1972	Not Reported	---
1973	8,668	3.6
1974	9,271	3.9
1975	8,951	3.7
1976	8,757	3.6
1977	10,120	4.3
1978	10,662	4.5
1979	13,145	5.6
1980	13,177	5.6
1981	14,005	5.9

Note: Total County zoned acreage in 1981 is estimated to be 235,183 acres.

Sources: Office of Comprehensive Planning, Composite County Zoning Totals, 1964 to 1970. Volume 1, Presentation of Alternatives, 5 Year Countywide Development Program, Fairfax County, Virginia, August 7, 1972. (For 1971 data.)
Fairfax County Office of Research and Statistics.

STRUCTURES USED FOR NONRESIDENTIAL ACTIVITIES

BY ACTIVITY TYPE

Fairfax County, 1980

Type of Activity	Structures	
	Number	Percent
<u>Commercial</u>		
Office*		
Low-Rise	589	17.7%
Medium/High-Rise	50	1.5
<u>Retail</u>		
Free-Standing Stores		
Food	77	2.3
Restaurants	169	5.1
Transportation Accessories and Repair	428	12.8
Other Free-Standing Stores	303	9.1
Shopping Centers	351	10.5
<u>Industrial</u>		
Manufacturing	35	1.1
Transportation/Utilities/Communications	70	2.1
Warehousing	276	8.3
Other Industrial	67	2.0
<u>Institutional</u>		
Educational	241	7.2
Public/Quasi-Public	65	2.0
Recreational	210	6.3
Religious	327	9.8
Other Institutional	74	2.2
County Total	3,332**	100.0%

*Low-rise offices are up to and including four stories in height medium/high-rise offices are five or more stories in height.

**The structures at Fort Belvoir Military Reservation and Lorton Reformatory are not included in the inventory because of their unique characteristics.

Source: Fairfax County Office of Research and Statistics

STRUCTURES USED FOR NONRESIDENTIAL ACTIVITIES

BY PLANNING DISTRICT

Fairfax County, 1980

Planning District	Structures	
	Number	Percent
Annandale	355	10.6%
Baileys	219	6.6
Bull Run	130	3.9
Fairfax	102	3.1
Jefferson	266	8.0
Lincolnia	67	2.0
Lower Potomac	82	2.5
McLean	345	10.4
Mount Vernon	411	12.3
Pohick ¹	157	4.7
Rose Hill	93	2.8
Springfield	290	8.7
Upper Potomac ²	365	10.9
Vienna ³	<u>450</u>	<u>13.5</u>
County Total	3,332	100.0%

¹Includes the Town of Clifton.

²Includes the Town of Herndon.

³Includes the Town of Vienna.

Source: Fairfax County Office of Research and Statistics.

GROSS FLOOR AREA* OF NONRESIDENTIAL STRUCTURES

BY ACTIVITY TYPE

Fairfax County, 1980

Type of Activity	Gross Floor Area*	
	Square Feet	Percent
<u>Commercial</u>		
Office**		
Low-Rise	9,037,493	11.7%
Medium/High-Rise	9,081,053	11.7
Retail		
Free-Standing Stores		
Food	346,531	0.4
Restaurants	610,434	0.8
Transportation Accessories	1,991,846	2.6
Other Free-Standing Stores	2,909,843	3.8
Shopping Centers	14,132,108	18.2
Motels, Hotels and Tourist Homes	1,778,987	2.3
<u>Industrial</u>		
Manufacturing	1,102,600	1.4
Transportation/Utilities/Communications	613,664	0.8
Warehousing	11,673,144	15.1
Other Industrial	48,315	0.1
<u>Institutional***</u>		
Educational	17,345,027	22.4
Public/Quasi-Public	1,067,832	1.4
Recreational	1,719,168	2.2
Religious	2,823,045	3.6
Other Institutional	1,199,264	1.5
County Total	77,480,354	100.0%

*Gross Floor Area is the area within the perimeter of the outside walls of a building taking into account the number of stories contained in the structure. Space used for interior features such as stairwells and elevator shafts is included in the gross floor area.

**Low-rise offices are up to and including four stories in height. Medium/high-rise offices are five or more stories in height.

***The structures at Fort Belvoir Military Reservation, Lorton Reformatory, and the Central Intelligence Agency are not included in the inventory because of their unique characteristics.

Source: Fairfax County Office of Research and Statistics

SHOPPING CENTERS BY PLANNING DISTRICT

Fairfax County, 1980

Planning District	Shopping Centers	
	Total	Percent
Annandale	13	9.9%
Baileys	11	8.4
Bull Run	4	3.0
Fairfax	2	1.5
Jefferson	12	9.0
Lincolnia	3	2.3
Lower Potomac	0	0.0
McLean	14	10.6
Mount Vernon	18	13.6
Pohick ¹	10	7.6
Rose Hill	2	1.5
Springfield	15	11.4
Upper Potomac ²	13	9.8
Vienna ³	<u>15</u>	<u>11.4</u>
County Total	132	100.0%

¹Includes the Town of Clifton.

²Includes the Town of Herndon.

³Includes the Town of Vienna.

Source: Fairfax County Office of Research and Statistics.

BUSINESSES WITHIN SHOPPING CENTERS

BY PLANNING DISTRICT

Fairfax County, 1980

Planning District	Businesses	
	Number	Percent
Annandale	196	7.9%
Baileys	255	10.3
Bull Run	75	3.0
Fairfax	34	1.4
Jefferson	151	6.1
Lincolnia	44	1.8
Lower Potomac	0	0.0
McLean	277	11.2
Mount Vernon	291	11.8
Pohick ¹	217	8.8
Rose Hill	43	1.8
Springfield	393	15.9
Upper Potomac ²	286	11.5
Vienna ³	<u>211</u>	<u>8.5</u>
County Total	2,473	100.0%

¹Includes the Town of Clifton.

²Includes the Town of Herndon.

³Includes the Town of Vienna.

Source: Fairfax County Office of Research and Statistics.

BUSINESSES WITHIN SHOPPING CENTERS

BY BUSINESS TYPE

Fairfax County, 1980

Business Type	Businesses	
	Number	Percent
Cultural, Educational, Entertainment	56	2.3%
Industrial	2	0.1
Public and Quasi-Public	26	1.0
Recreational	22	0.9
Retail		
Food		
Prepared	302	12.2
Unprepared	155	6.3
General Merchandise		
Apparel and Fashion Accessories	375	15.2
Appliances and Home Furnishings	208	8.4
Building and Home Improvement Supplies	70	2.8
Drugs	60	2.4
Hobby and Recreational Supplies	225	9.1
Variety Goods	55	2.2
Other General Merchandise	173	7.0
Transportation Accessories	59	2.4
Services		
Personal Services		
Hairstyling	165	6.7
Laundering	93	3.8
Other Personal Services	30	1.2
Professional Services		
Financial	139	5.6
Real Estate	76	3.1
Other Professional Services	129	5.2
Other Services	49	2.0
Transient Lodging	1	0.0
Transportation	3	0.1
County Total	2,473	100.0%

Source: Fairfax County Office of Research and Statistics.

NUMBER OF RETAIL BUSINESS ESTABLISHMENTS BY BUSINESS CLASSIFICATION

Fairfax County, 1975 to 1980

Business Classification	1975	1976	1977	1978	1979	1980
Apparel	337	343	348	371	375	401
Automotive	622	620	668	667	685	712
Food	842	910	966	1,012	1,027	1,082
Furniture, Home Furnishings, and Equipment	466	543	613	683	712	776
General Merchandise	392	449	481	525	557	662
Lumber and Building Supplies	284	316	328	351	365	381
Fuel	50	49	41	40	42	41
Machinery, Equipment, and Supplies	258	304	359	384	418	481
Miscellaneous	2,179	2,367	2,513	2,746	2,944	3,075
Hotels, Motels, et cetera	56	54	54	55	57	54
Other Miscellaneous and Unidentifiable	9	7	5	5	5	6
Totals	5,495	5,962	6,376	6,839	7,187	7,671

6-II/A

Source: Commonwealth of Virginia, Department of Taxation, Taxable Sales, for cited years.

TAXABLE SALES BY RETAIL BUSINESS CLASSIFICATION

Fairfax County, 1976 to 1980

01-11A

Business Classification	Taxable Sales				
	1976	1977	1978	1979	1980
Apparel	\$ 115,003,988	\$ 126,409,587	\$ 144,408,527	\$ 154,484,895	\$ 169,119,351
Automotive	64,943,945	73,912,320	85,755,114	95,097,627	103,076,385
Food	496,666,952	555,312,087	618,900,593	722,476,310	782,739,302
Furniture and Home Furnishings	72,542,669	86,282,170	120,530,814	114,818,463	136,057,143
General Merchandise	348,901,875	370,347,772	393,464,673	419,937,151	482,193,660
Lumber and Building Supplies	158,783,998	177,421,718	203,879,277	222,909,738	212,269,583
Fuel	13,614,360	12,401,024	14,901,483	19,220,930	22,606,306
Machinery, Equipment, and Supplies	28,370,433	36,910,798	53,556,414	62,867,213	70,768,612
Miscellaneous	141,756,929	161,391,369	188,713,022	209,622,674	231,552,522
Hotels and Motels	21,075,723	25,900,163	31,201,398	34,964,617	40,749,404
Other	1,592,805	2,593,040	2,273,546	5,732,903	4,516,553
Totals	\$1,463,253,677	\$1,628,882,048	\$1,857,584,861	\$2,062,132,521	\$2,255,648,821

Source: Commonwealth of Virginia, Department of Taxation, Taxable Sales, for years cited.

TAXABLE SALES AND PER CAPITA TAXABLE SALES

Fairfax County, 1971 to 1980

Year	Taxable Sales	Annual Percent Change	Total Population*	Per Capita Taxable Sales
1971	\$ 756,978,280	N/A	479,100	\$1,580
1972	849,088,695	12.2%	496,600	1,710
1973	1,032,017,257	21.5	514,000	2,008
1974	1,210,819,974	17.3	529,700	2,286
1975	1,298,730,646	7.3	545,800	2,379
1976	1,463,253,677	12.7	558,600	2,620
1977	1,628,882,048	11.3	566,900	2,873
1978	1,857,584,861	14.0	577,600	3,216
1979	2,062,132,521	11.0	592,200	3,482
1980	2,255,648,821	9.4	606,300	3,720

*Total population estimate as of July of cited years.

Sources: Commonwealth of Virginia, Department of Taxation, Taxable Sales, for cited years.
Fairfax County Office of Research and Statistics.

NUMBER OF FIRMS BY INDUSTRIAL GROUP

Fairfax County, 1965 to 1979

Industry	Number of Firms by Year						
	1965	1970	1971	1973	1975	1977	1979
Research and Technical Manufacturing	43	135	181	222	232	276	342
National and International Trade and Professional Associations		2	4	40	52	66	100
Wholesale Distribution	32	120	142	195	204	242	264
Contract Construction		119	133	141	161	166	200
Other Manufacturing	55	73	83	118	133	140	148
Transportation Warehousing		22	24	37	39	35	49
Miscellaneous Industrial Services		34	48	91	139	212	304
Major Utility Installation	—	—	2	3	4	5	6
TOTAL	130	515	617	847	964	1,142	1,413

Source: Fairfax County Economic Development Authority, Directory of Business and Industry.

Note: Form was expanded in 1968 in order to adequately account for the number of new and diverse firms entering the County.

INDUSTRIAL GROWTH STATISTICAL SUMMARY

Fairfax County, 1979

VII-13

Classification	Firms		Square Feet		Employees	
	Number	Percent	Number	Percent	Number	Percent
Research & Technical Manufacturing	342	24.2%	6,085,682	34.6%	24,319	42.7%
National & International Trade & Professional Associations	100	7.1	1,116,126	6.3	3,462	6.1
Wholesale Distribution	264	18.7	4,120,493	23.4	6,441	11.3
Contract Construction	200	14.1	805,649	4.6	7,516	13.2
Other Manufacturing	148	10.5	1,387,635	7.9	3,072	5.4
Transportation & Warehousing	49	3.5	1,786,784	10.1	2,063	3.6
Corporate Headquarters, Administra- tive & Marketing Offices, Manufacturing Representatives	206	14.6	1,377,848	7.8	5,970	10.5
Other Industrial Services	98	6.9	314,303	1.8	2,612	4.6
Major Utility Installations	6	0.4	610,950	3.5	1,449	2.6
TOTAL	1,413	100.0%	17,605,470	100.0%	56,904	100.0%

Source: Fairfax County Economic Development Authority, Directory of Business and Industry.

NONRESIDENTIAL PROJECTS WITHIN

THE DEVELOPMENT PROCESS*

Fairfax County, January 1981

Type of Activity	Projects	
	Number	Percent
Transient Lodging	18	2.4%
Warehouse/Industrial Park	172	23.1
Other Industrial	29	3.9
Transportation/Communications/Utilities	14	1.9
Shopping Centers	23	3.1
General Merchandise	28	3.8
Food Retail	37	5.0
Transportation Retail	34	4.6
Other Retail	6	0.8
Office/Service	286	38.5
Public/Quasi-Public	6	0.8
Church/Synagogue	43	5.8
School	24	3.2
Recreational and Cultural Use	22	3.0
Resource Use	1	0.1
Total Projects	743	100.0%

*The development process includes the rezoning of land, site plan submission and review, the issuance of building permits, and the construction of the physical structures.

Source: Fairfax County Office of Research and Statistics

NONRESIDENTIAL BUILDING PERMIT ACTIVITY*

Fairfax County, FY 1970 to FY 1980

Fiscal Year	Authorized Permits	
	Number	Value
1970	176	\$ 28,554,307
1971	154	58,297,040
1972	197	77,764,644
1973	168	37,261,015
1974	125	117,238,493
1975	77	45,443,050
1976	67	43,903,600
1977	108	56,606,043
1978	202	109,069,336
1979	333	259,987,302
1980	301	200,364,155

*Applies to permits issued for new construction.

Source: Fairfax County Department of Environmental
Management.

AMOUNT AND TYPE OF DEPOSITS HELD BY FINANCIAL
INSTITUTIONS (THOUSANDS OF DOLLARS)

Fairfax County, 1979

Type of Deposits	Deposits	
	Amount	Percent
<u>Commercial Banks</u>		
Private Demand	\$ 486,405	17.6%
Private Savings	325,122	11.8%
Private Time Other Than Savings	339,524	12.3%
Public Funds (Demand and Time Savings)	71,506	2.6%
	\$1,222,557	44.3%
<u>Thrift Institutions</u>		
Savings	\$1,537,008	55.7%
Total	\$2,759,565	100.0%

Source: Tayloe Murphy Institute, 1979 Deposit Statistics for Banks and Thrift
Institutions in Virginia Communities, August 1980.

AMOUNT OF DEPOSITS BY TYPE OF FINANCIAL INSTITUTION

(THOUSANDS OF DOLLARS)

Northern Virginia Jurisdictions, 1979

VII-17

Jurisdictions	Commercial Banks		Thrift Institutions		Total	
	Amount	Percent	Amount	Percent	Amount	Percent
Counties						
Fairfax	\$1,222,557	44.3%	\$1,537,008	55.7%	\$2,759,565	100.0%
Arlington	883,681	46.6	1,014,547	53.4	1,898,228	100.0
Loudoun	181,024	80.2	44,786	19.8	225,810	100.0
Prince William	132,273	37.3	222,237	62.7	354,510	100.0
Cities						
Alexandria	517,440	62.2	314,697	37.8	832,137	100.0
Fairfax	214,183	67.3	103,994	32.7	318,177	100.0
Falls Church	102,396	67.0	50,418	33.0	152,814	100.0
Manassas and Manassas Park	80,660	93.7	5,464	6.3	86,124	100.0
Northern Virginia Total	\$3,334,214	50.3%	\$3,293,151	49.7%	\$6,627,365	100.0%

Source: Tayloe Murphy Institute, 1979 Deposit Statistics for Banks and Thrift Institutions in Virginia Communities, August 1980.

TOTAL DEPOSITS HELD BY FINANCIAL INSTITUTIONS

(THOUSANDS OF DOLLARS)

Northern Virginia Jurisdictions, 1978 and 1979

Jurisdiction	1978 Total Deposits		1979 Total Deposits		Percent Change 1978 to 1979
	Amount	Percent	Amount	Percent	
Counties					
Fairfax	\$2,523,305	40.9%	\$2,759,565	41.6%	9.4%
Arlington	1,804,004	29.3	1,898,228	28.6	5.2
Loudoun	212,061	3.4	225,810	3.4	6.5
Prince William	313,589	5.0	354,510	5.4	13.0
Cities					
Alexandria	801,922	13.0	832,137	12.6	3.8
Fairfax	276,205	4.5	318,177	4.8	15.2
Falls Church	151,099	2.5	152,814	2.3	11.4
Manassas and Manassas Park	84,667	1.4	86,124	1.3	17.2
Northern Virginia Total	\$6,166,852	100.0%	\$6,627,365	100.0%	7.5%

Source: Tayloe Murphy Institute, 1979 Deposit Statistics for Banks and Thrift Institutions in Virginia Communities, August 1980.

AGRICULTURAL CHARACTERISTICS

Fairfax County, 1964, 1969, 1974, 1978

VII-19

Characteristic	Year			
	1964	1969	1974	1978
Number of Farms	128	278	230	187
Average Number of Acres Per Farm	148.5	130.2	106.6	109.0
Total Acres of Land in Farms	32,369	36,211	24,526	20,464
Average Value of Land and Buildings Per Farm	\$ 197,455	\$ 267,077	\$ 271,739	\$ 364,976
Market Value of All Agricultural Products Sold	\$2,167,850	\$2,538,384	\$2,591,000	\$4,126,000
Average Market Value of Products Per Farm	\$ 9,944	\$ 9,130	\$ 11,265	\$ 22,065
Average Age of Farm Operators (in years)	56.4	54.6	56.0	53.1

Source: U.S. Department of Commerce, Bureau of the Census, Census of Agricultural, County Data, for years cited.

VIII REVENUES AND EXPENDITURES

TAX RATES FOR REAL ESTATE AND
PERSONAL PROPERTY BY JURISDICTION

Washington, D.C. SMSA, 1981*

Jurisdiction	Real Estate Property Tax Rate	Personal Property Tax Rate
Fairfax County	\$1.54 per \$100 assessed valuation, 100% of appraisal value	\$4.80 per \$100
Alexandria City	\$1.37 per \$100 assessed valuation, 100% of appraisal value	\$5.20 per \$100
Arlington County	\$0.96 per \$100 assessed valuation, 100% of appraisal value	\$5.30 per \$100
Fairfax City	\$1.24 per \$100 assessed valuation, 100% of appraisal value	\$2.99 per \$100
Falls Church City	\$1.00 per \$100 assessed valuation, 100% of appraisal value	\$5.50 per \$100
Loudoun County	\$1.04 per \$100 assessed valuation, 100% of appraisal value	\$5.00 per \$100
Manassas City	\$1.23 per \$100 assessed valuation, 100% of appraisal value	\$1.78 per \$100
Manassas Park City	\$2.30 per \$100 assessed valuation, 100% of appraisal value	\$3.50 per \$100
Prince William County**	\$1.45 per \$100 assessed valuation, 100% of appraisal value	\$4.00 per \$100
Montgomery County***	\$3.60 per \$100 assessed valuation, 46.8% of appraisal value	\$3.60 per \$100
Prince George's County	\$3.42 per \$100 assessed valuation, 50% of appraisal value	\$3.42 per \$100
District of Columbia	\$1.54 per \$100 assessed valuation, non-owner occupied, 100% of appraisal value	\$3.10 per \$100
	\$1.22 per \$100 assessed valuation, owner occupied, 100% of appraisal value	\$3.10 per \$100

*Data as of June 1981.

**Indicates base rate which excludes levies added to real estate and personal property tax rates.

***Real estate tax rate varies throughout Montgomery County, Maryland.

Source: Fairfax County Office of Research and Statistics.

REVENUE SOURCES (000's) FOR ALL GOVERNMENTAL FUNDS

Fairfax County, FY1970 to FY1980

Fiscal Year	<u>Total</u>	<u>Local</u>			<u>State</u>	<u>Federal</u>
	Total Revenue* All Sources	Total Revenue From Local Sources	Revenue From Property** Taxes	Other Local Sources	Revenue From Commonwealth	Revenue From Federal Government
1970	\$161,814	\$110,387	\$ 73,056	\$ 37,331	\$38,391	\$13,036
1971	187,187	128,494	84,982	43,512	41,302	17,391
1972	213,304	149,988	96,139	53,849	47,438	15,878
1973	256,630	178,205	112,366	65,839	53,833	24,592
1974	289,779	205,399	128,958	76,441	60,192	24,188
1975	318,925	223,543	141,444	82,099	66,186	29,196
1976	349,429	245,124	159,248	85,876	72,022	32,283
1977	395,829	289,206	196,986	92,220	73,743	32,880
1978	435,825	329,306	222,556	106,750	77,501	29,018
1979	482,862	362,753	242,110	120,643	81,011	39,098
1980	536,406	406,940	265,422	141,518	88,396	41,070

*Revenue sources are not total income sources for the County; excluded are bond sales and other "non-revenue" items.

**Property taxes include real and personal property.

Sources: County of Fairfax, Virginia; Accountants' Report, Financial Statements and Supplementary Data, for fiscal years 1970 to 1975.
County of Fairfax, Virginia; Annual Financial Report, for fiscal years 1976 to 1980.

GENERAL FUND PROPERTY TAX RATE PER \$100 ASSESSED VALUATION

Fairfax County, FY 1963 to FY 1982

Fiscal Year	Real Estate	Personal Property*		
		Regular	Machinery and Tools	Research and Development
1963	\$3.35	\$4.10	**	**
1964	3.75	4.50	**	**
1965	3.75	4.50	**	**
1966	4.05	4.80	\$4.00	**
1967	4.05	4.05	3.00	\$3.00
1968	4.05	4.05	3.00	3.00
1969	4.30	4.30	3.25	3.25
1970	4.30	4.30	3.25	3.25
1971	4.30	4.30	3.25	3.25
1972	4.30	4.30	3.25	3.25
1973	4.30	4.30	3.25	3.25
1974	4.30	4.30	3.25	3.25
1975	4.10	4.30	3.25	3.25
1976	3.85	4.30	3.25	3.25
1977	4.35	4.80	3.75	3.75
1978***	1.75	4.80	3.75	3.75
1979***	1.64	4.80	3.75	3.75
1980***	1.54	4.80	3.75	3.75
1981***	1.54	4.80	3.75	3.75
1982***	1.51	4.80	3.75	3.75

*Beginning in FY1967, the majority of personal property owned by public service corporations is taxed at the real estate rate. Beginning in FY1978, mobile homes are separately classified as personal property and taxed at the real estate rate.

**No separate levy -- included in regular personal property rate.

***Beginning in FY1978, tax rates were applied to assessments at 100 percent of market value. Tax rates for previous fiscal years were applied to assessments at 40 percent of market value.

Source: County of Fairfax, Approved Fiscal Plan, for years shown.

PERSONAL AND REAL TAX COLLECTION

Fairfax County, FY 1960 to FY 1980

Fiscal Year	Total Tax Levy	Collection Of Current Taxes	Percent of Levy Collected	Collection Of Back Taxes	Total Collection of Current and Back Taxes	Percent Of Current and Back Taxes Collected to Tax Levy
1960	\$ 17,720,139	\$ 17,128,955	96.66%	\$ 371,283	\$ 17,500,239	98.76%
1961	20,001,979	19,389,359	96.94	435,901	19,825,260	99.12
1962	22,371,566	21,694,523	96.97	535,696	22,230,220	99.37
1963	25,434,189	24,751,171	97.31	598,396	25,349,567	99.67
1964	31,485,534	30,694,436	97.49	640,742	31,335,178	99.52
1965	36,191,769	35,484,210	98.04	694,864	36,179,074	99.96
1966	44,820,624	43,841,950	97.81	655,618	44,497,569	99.28
1967	47,781,706	46,444,991	97.20	716,070	47,161,062	98.70
1968	53,819,001	52,449,154	97.45	906,259	53,355,413	99.14
1969	63,850,101	62,385,859	97.71	1,086,193	63,472,053	99.41
1970	75,238,892	72,878,146	96.86	1,083,763	73,961,909	98.30
1971	86,592,905	84,095,085	97.12	1,946,279	86,041,364	99.36
1972	97,334,385	95,251,065	97.85	2,148,868	97,392,111	100.05
1973	114,230,381	112,023,948	98.06	1,911,140	113,935,088	99.74
1974	131,596,477	129,160,610	98.15	1,721,009	130,881,619	99.46
1975	145,283,084	141,906,977	97.68	1,892,143	143,799,120	98.98
1976	159,586,834	157,368,693	98.61	3,139,310	160,508,003	100.58
1977	198,592,132	196,588,887	98.99	3,483,293	200,072,180	100.75
1978	224,278,814	222,296,535	99.12	2,458,732	224,755,267	100.21
1979	239,911,036	237,042,884*	98.80*	3,463,066	240,505,950	100.25
1980	263,514,910	260,293,577	98.77	3,317,456	263,611,033	100.04

*The FY 1979 actual collections exclude \$823,471 in prepaid real estate taxes.

Sources: County of Fairfax, Virginia, Report on Audit for FY 1960 to FY 1967.
 County of Fairfax, Virginia, Accountants' Report, Financial Statements and Summary Data, for FY 1968 to FY 1980.

ASSESSED VALUATION OF ALL TAXABLE PROPERTY*

Fairfax County, FY 1962 to FY 1980

Fiscal Period	Real** Property	Personal Property	Other***	Total
1962	\$ 551,478,850	\$ 95,713,008	\$ 62,597,638	\$ 709,789,496
1963	560,136,059	100,955,679	64,669,824	725,761,562
1964	622,597,379	115,624,355	71,491,300	809,713,034
1965	710,645,639	136,445,558	85,105,891	932,197,088
1966	816,618,265	161,801,515	92,664,242	1,071,084,022
1967	955,973,293	132,501,000	65,383,418	1,153,857,711
1968	1,082,444,867	147,662,999	72,057,626	1,302,165,492
1969	1,204,347,685	174,547,681	74,829,234	1,453,724,600
1970	1,423,561,909	206,556,457	83,177,743	1,713,296,109
1971	1,641,749,466	237,650,250	94,346,408	1,973,746,124
1972	1,836,488,713	274,798,214	108,500,174	2,219,787,119
1973	2,160,672,320	323,449,861	119,941,391	2,604,063,572
1974	2,517,312,928	360,928,084	124,593,421	3,002,834,433
1975	2,899,521,540	422,130,896	133,617,639	3,455,270,075
1976	3,415,772,652	471,371,360	138,499,193	4,025,643,205
1977	3,763,904,744	521,656,648	156,200,299	4,441,761,621
1978	10,656,469,023	590,197,331	401,328,402	11,647,994,756
1979	12,104,826,644	710,577,435	444,888,859	13,260,292,938
1980	13,936,574,578	851,856,796	524,725,983	15,313,157,357

*Assessed values are as of June 30 of the fiscal year cited and are net of exonerations and tax relief for the elderly and disabled.

**Beginning January 1, 1977, for FY 1978, real property assessments are based on 100 percent of market value; real property assessments for previous fiscal years were based on 40 percent of market value.

***Assessed value of public service corporation real and personal property.

Sources: County of Fairfax, Virginia, Report on Audit, for FY 1962 to FY 1967.
County of Fairfax, Virginia, Accountant's Report, Financial Statements and Supplementary Data, for FY 1968 to FY 1980.

RATIO OF ASSESSED VALUE OF TAX-EXEMPT REAL PROPERTIES
TO THE ASSESSED VALUE OF ALL LOCALLY ASSESSED PROPERTIES

Fairfax County, CY1970 to CY1981

Calendar Year*	Assessed Value of Real Properties**		Ratio of Tax-Exempt to Total
	Total	Tax-Exempt	
1970	\$ 1,825,267,946	\$ 183,518,480	10.1%
1971	2,048,734,206	212,245,475	10.4
1972	2,394,720,771	235,410,510	9.8
1973	2,771,759,746	265,605,275	9.6
1974	3,194,732,120	295,779,935	9.3
1975	3,795,633,820	345,667,975	9.1
1976	4,167,493,040	383,883,030	9.2
1977***	11,908,708,705	1,244,606,810	10.5
1978***	13,565,436,830	1,475,497,495	10.9
1979***	15,651,448,840	1,728,646,010	11.0
1980***	18,434,334,705	1,868,881,390	10.1
1981***	22,122,384,225	2,094,517,920	9.5

*Represents assessments as of January 1 of years shown.

**Total assessed values shown exclude real estate owned by public service corporations.

***Represents assessments at 100 percent of market value.
 Assessed value of other years is based on 40 percent of the market value.

Source: Fairfax County Office of Assessments.

TOTAL ASSESSED VALUE OF TAXABLE LOCALLY
ASSESSED REAL ESTATE BY GENERAL ZONING CATEGORY

Fairfax County, CY 1970 to CY 1981

Calendar Year*	Total Assessed Value**	General Zoning Category			
		Residential	Commercial	Industrial	Other***
1970	\$ 1,641,749,466 100.0%	\$ 1,342,879,536 81.8%	\$ 166,534,665 10.1%	\$ 61,797,440 3.8%	\$ 70,537,825 4.3%
1971	1,836,488,731 100.0%	1,517,314,456 82.6%	180,155,290 9.8%	67,873,935 3.7%	71,145,050 3.9%
1972	2,159,310,261 100.0%	1,721,921,321 79.7%	246,016,525 11.4%	100,350,715 4.7%	91,021,700 4.2%
1973	2,506,154,471 100.0%	2,011,883,156 80.3%	276,590,515 11.0%	112,371,205 4.5%	105,309,595 4.2%
1974	2,898,952,185 100.0%	2,367,635,011 81.7%	297,325,935 10.2%	119,107,825 4.1%	114,883,414 4.0%
1975	3,449,965,845 100.0%	2,782,690,405 80.6%	354,520,900 10.3%	154,568,770 4.5%	158,185,770 4.6%
1976	3,783,610,010 100.0%	3,079,533,625 81.4%	372,867,060 9.9%	160,438,535 4.2%	170,770,790 4.5%
1977****	10,644,101,895 100.0%	8,733,843,240 81.9%	995,664,545 9.3%	461,518,230 4.3%	473,075,880 4.5%
1978****	12,089,939,335 100.0%	10,380,283,320 85.9%	1,163,408,315 9.6%	540,170,890 4.5%	6,076,810 0.0%
1979****	13,922,802,830 100.0%	12,105,443,405 87.0%	1,240,448,855 8.9%	564,274,610 4.1%	12,635,960 0.0%
1980****	16,565,453,315 100.0%	14,166,725,400 85.5%	1,656,693,285 10.0%	742,034,630 4.5%	0**** 0.0%
1981	20,027,866,305 100.0%	16,938,006,165 84.6%	2,101,890,015 10.5%	987,970,125 4.9%	0**** 0.0%

*Represents assessments as of January 1 of years shown.

**Total assessed values shown exclude real estate owned by public service corporations and tax-exempt properties.

***For CY 1970 through CY 1976, "Other" includes properties within towns and parcels classified within multiple zoning districts. For CY 1977 through CY 1979, "Other" includes only parcels classified within multiple zoning districts.

****Represents assessments at 100 percent of market value. Assessed value of other years is based on 40 percent of the market value.

*****For CY 1980 and CY 1981, acreage included in the category "Other" has been included in the category of industrial.

Source: Fairfax County Office of Assessments.

PERCENTAGE CHANGE IN TOTAL ASSESSED VALUE
OF TAXABLE LOCALLY ASSESSED REAL PROPERTY

Fairfax County, CY1970 to CY1981

Calendar Year*	Total Assessed Value**	Percentage Change
1970	\$ 1,641,749,466	---
1971	1,836,488,731	11.9%
1972	2,159,310,261	17.6
1973	2,506,154,471	16.1
1974	2,898,952,185	15.7
1975	3,449,965,845	19.0
1976	3,783,610,010	9.7
1977***	10,664,101,895	12.7
1978***	12,089,939,335	13.3
1979***	13,922,802,830	15.1
1980***	16,565,453,315	19.0
1981***	20,025,948,400	20.9

*Represents assessments as of January 1 of years shown.

**Total assessed values shown exclude real estate owned by public service corporations and tax exempt properties.

***Represents assessments at 100 percent of market value. Assessed value of other years is based on 40 percent of the market value. This change in the rate of assessment has been taken into account in determining percentage change to provide comparable data.

Source: The Real Estate Tax Book, Fairfax County Office of Assessments.

REVENUES RECEIVED FROM LICENSES AND NON-PROPERTY TAXES

Fairfax County, FY1970 to FY1980

Fiscal Year	Sales Tax	Utility Tax*	BPOL**	Vehicle License Tax	Cigarette Tax
1970	\$ 6,467,000	\$ 6,153,000	\$ 1,335,000	\$1,822,000	N/A
1971	7,256,000	6,615,000	1,715,000	1,964,000	\$1,719,000
1972	8,331,000	12,844,000	2,522,000	2,210,000	1,948,000
1973	9,770,000	15,260,000	4,500,000	3,501,000	2,041,000
1974	11,457,000	16,538,000	4,796,000	3,836,000	2,145,000
1975	12,669,000	16,299,000	4,988,000	4,008,000	2,214,000
1976	14,154,000	15,138,000	5,525,000	5,812,000	2,292,000
1977	15,945,000	16,728,000	6,270,000	6,290,000	2,370,000
1978	18,282,000	19,147,000	6,963,000	6,712,000	2,367,000
1979	21,156,356	20,837,860	8,775,923	6,995,034	2,413,455
1980	25,997,595***	25,320,098****	10,423,250	7,240,999	2,495,764

*There were major reductions in the gas and electric rates midway through FY1975, and a somewhat lesser reduction in the telephone rate at the end of FY1974.

**Business, Professional and Occupational License Tax.

***Includes windfall revenues of \$2,008,113 based on revised State accounting.

****Includes windfall revenues of \$1,868,610 based on revised State accounting.

Source: Fairfax County Office of Management and Budget.

COUNTY VEHICLE LICENSES* ISSUED BY TYPE

Fairfax County, 1960 to 1980

Calendar Year	Type of Vehicle License Issued				Total
	Regular**	Motorcycle	Military***	Other****	
1960	80,612	278	---	1,068	81,958
1961	87,928	299	---	1,115	89,342
1962	96,710	359	---	1,113	98,182
1963	107,633	452	---	1,202	109,287
1964	117,755	607	---	1,241	119,603
1965	129,348	975	---	1,352	131,675
1966	138,318	1,364	---	1,357	141,039
1967	142,092	1,516	16,605	2,926	163,139
1968	154,612	1,695	17,296	3,333	176,936
1969	169,242	1,919	21,724	3,244	196,129
1970	181,193	2,307	21,678	3,627	208,805
1971	202,931	2,998	23,145	15,110	244,184
1972	227,497	3,550	25,211	15,486	271,744
1973	234,436	4,250	24,594	14,193	277,473
1974	258,829	5,766	24,599	15,445	304,639
1975	275,715	5,759	24,093	16,736	322,303
1976	293,253	5,465	25,203	19,512	343,433
1977	316,569	5,435	24,641	18,276	364,921
1978	326,463	5,076	21,738	20,296	373,573
1979	354,057	5,350	18,628	12,926	390,961
1980	356,123	5,559	18,095	12,024	391,801

*The Fairfax County Code provides that every owner of a motor vehicle which is normally garaged, stored, or parked in the County shall annually secure a County vehicle license.

**Regular licenses are issued to owners of cars and trucks who declare the County as their place of residence.

***Military personnel owning a vehicle and storing it in the County, but declaring another jurisdiction as their residence, must obtain a County vehicle license for it at no charge.

****"Other" includes duplicates, transfers, and tags issued for government-owned vehicles.

Source: Fairfax County Office of Finance.

LONG-TERM INDEBTEDNESS
Fairfax County, FY 1962 to FY 1980

Fiscal Year	Total Long Term Indebtedness	Self- Supporting Debt*	Net Debt**
1962	\$ 83,933,050	\$18,985,000	\$ 64,948,050
1963	86,793,920	18,770,000	68,023,920
1964	102,279,790	28,515,000	73,764,790
1965	110,590,460	29,910,000	80,680,460
1966	128,483,580	29,350,000	99,133,580
1967	167,011,850	48,755,000	118,256,850
1968	189,397,620	48,470,000	140,927,620
1969	210,755,140	47,740,000	163,015,140
1970	217,601,485	46,975,000	170,636,485
1971	291,606,680	76,145,000	215,461,680
1972	325,342,650	75,270,000	250,072,650
1973	338,708,455	73,995,000	264,713,455
1974	374,575,435	71,690,000	302,885,435
1975	383,971,248	69,145,833	314,825,415
1976	370,475,395	66,530,000	303,945,395
1977	370,830,375	63,965,000	306,865,375
1978	386,066,525	66,445,000	319,621,525
1979	405,465,800	63,790,000	341,675,800
1980	410,188,900	60,895,000	349,293,900

*Self-supporting debt is paid by means of service charges and not from the general fund. Included in this category are sanitary sewer bonds, integrated sewer system bonds, and special revenue bonds.

**Net debt is the difference between total long-term indebtedness and self-supporting debt.

Sources: County of Fairfax, Virginia, Report on Audit, Schedules A-2 for FY1962 to FY1967.
Fairfax County Office of Management and Budget.

TREND OF NET DEBT AS A PERCENTAGE
OF ESTIMATED MARKET VALUE OF TAXABLE PROPERTY
Fairfax County, FY 1967 to FY 1980

Fiscal Year	Estimated Market Value of Taxable Property*	Net Debt	Percentage of Estimated Market Value of Taxable Property
1967	\$ 2,642,000,000	\$118,256,850	4.50
1968	2,964,700,000	140,927,620	4.75
1969	3,301,600,000	163,015,140	4.93
1970	3,885,800,000	170,626,485	4.39
1971	4,478,900,000	215,461,680	4.81
1972	5,023,200,000	250,072,650	4.97
1973	5,898,900,000	264,713,455	4.48
1974	6,833,600,000	302,885,435	4.43
1975	7,861,200,000	314,825,415	4.00
1976	9,207,900,000	303,945,395	3.30
1977	10,152,200,000	306,865,375	3.02
1978	11,686,800,000**	319,621,525	2.73
1979	13,294,700,000	341,675,800	2.57
1980	15,343,200,000	349,293,900	2.28

*Estimated market value is based on recorded values as of January 1 of the prior fiscal year.

**Beginning January 1, 1977, for FY 1978, real estate assessments are 100 percent of market value. Real estate assessments for previous fiscal years were based on 40 percent of the market value.

Sources: County of Fairfax, Virginia, Report on Audit, for FY 1962 to FY 1967.
 Fairfax County Office of Management and Budget.

NET DEBT PER CAPITA

Fairfax County, FY1967 to FY1980

Fiscal Year	Population	Net Debt	Net Debt Per Capita
1967	379,055	\$118,256,850	312
1968	409,267	140,927,620	344
1969	432,482	163,015,140	377
1970	454,275	170,626,485	376
1971	470,600	215,461,680	458
1972	487,600	250,072,650	513
1973	505,700	264,713,455	523
1974	522,200	302,885,435	580
1975	537,200	314,825,415	586
1976	554,500	303,945,395	548
1977	562,800	306,865,375	545
1978	571,000	319,621,525	560
1979	584,200	341,675,800	585
1980	596,901	349,293,900	585

Sources: County of Fairfax, Virginia, Report on Audit, for FY1967.
Fairfax County Office of Management and Budget.

GENERAL GOVERNMENT AND SCHOOL EXPENSES*

(000's)

Fairfax County, FY1962 to FY1980

Fiscal Year	Total General Government Expenditures	County Administration	Administration of Justice	Crime Prevention	Fire Prevention	Public Welfare	Public Health	Public Works	County Development	Library	Other Operating Expenditures	Total School
1962	9,104	240	213	1,580	726	1,367	375	2,366	---	437	1,800	24,346**
1963	11,132	323	267	1,818	858	1,510	551	2,921	---	646	2,238	28,516
1964	12,384	363	286	1,972	957	1,696	589	3,141	---	765	2,615	34,268
1965	14,949	639	347	2,311	1,208	2,033	669	3,510	---	933	3,299	40,140
1966	17,467	820	395	2,620	1,411	2,371	824	3,901	---	1,123	4,002	47,614
1967	21,114	929	468	3,099	1,750	2,659	880	4,504	---	1,330	5,495	54,840
1968	25,815	1,124	585	3,756	2,200	3,336	1,001	5,631***	---	1,561	6,621	67,062
1969	31,191	1,452	699	4,606	2,764	4,120	1,198	4,657	1,612	1,667	8,416	84,538
1970	37,063	2,062	857	5,536	3,543	4,828	1,574	4,803	2,547	1,909	9,404	103,754
1971	48,285	2,418	1,159	6,008	4,239	6,408	1,612	6,265	2,816	2,813	14,547	118,422
1972	59,057	8,546****	1,569	7,433	5,232	8,354	1,965	8,680	3,289	3,192	10,777	130,207
1973	68,992	7,318	1,880	9,696	6,589	9,382	2,135	11,049	3,770	3,510	13,663	145,182
1974	79,105	10,360	2,462	11,398	7,638	11,095	2,827	12,132	4,471	3,950	12,772	162,128
1975	109,118	18,156	3,300	14,157	9,378	13,961	3,828	15,671	5,209	4,531	20,927	184,255
1976	126,851	21,270	3,840	16,017	11,034	16,386	4,389	21,783	2,258	4,828	25,046	212,580
1977	133,999	23,158	6,093	15,969	12,073	13,922	3,229	18,083	9,022	4,895	27,555	229,185
1978	148,542	29,692	5,793	19,714	13,547	13,558	4,436	23,919	6,356	5,336	26,191	248,399
1979	171,621	33,267	6,439	22,456	15,337	15,430	4,712	29,421	5,950	5,690	32,919	270,494
1980	202,764	39,002	6,594	25,231	17,965	18,424	5,209	35,717	6,408	6,146	42,068	298,391

*Operating expenditures do not include debt service or capital expenditures.

**Fiscal Year 1962 school operating expenses were adjusted to reflect the removal of vehicle replacement costs.

***Prior to 1969, some of the functions of the Department of Environmental Management were included within the Department of Public Works.

****County administrative costs in FY1972 contain employee benefits in personnel costs for the first time. These costs were formerly in the other operating expenditures column.

Sources: County of Fairfax, Virginia, Report on Audit, Schedules B-1 and B-2 for FY1962 to FY1967.
County of Fairfax, Virginia Accountants' Report, Financial Statements and Supplementary Data, for FY1968 to FY1980.

PERCENTAGE DISTRIBUTION OF OPERATING EXPENDITURES*

Fairfax County, FY1962 to FY1980

GENERAL GOVERNMENT EXPENSES (Percentages)

Fiscal Year	Total* General Expenditures	County Administration	Administration of Justice	Crime Prevention	Fire Prevention	Public Welfare	Public Health	Public Works	County Development	Library	Other Operating Expenditures
1962	100.0	2.6	2.3	17.4	8.0	15.0	4.1	26.0	0.0	4.8	19.8
1963	100.0	2.9	2.4	16.3	7.7	13.6	4.9	26.3	0.0	5.8	20.1
1964	100.0	2.9	2.3	15.9	7.7	13.7	4.8	25.4	0.0	6.2	21.1
1965	100.0	4.3	2.3	15.4	8.1	13.6	4.5	23.5	0.0	6.2	22.1
1966	100.0	4.7	2.3	15.0	8.1	13.6	4.7	22.3	0.0	6.4	22.9
1967	100.0	4.4	2.2	14.7	8.3	12.6	4.2	21.3	0.0	6.3	26.0
1968	100.0	4.4	2.3	14.5	8.5	12.9	3.9	21.8**	0.0	6.0	25.7
1969	100.0	4.6	2.2	14.8	8.9	13.2	3.8	14.9	5.2	5.3	27.1
1970	100.0	5.6	2.3	14.9	9.6	13.0	4.2	13.0	6.9	5.2	25.3
1971	100.0	5.0	2.4	12.4	8.8	13.3	3.3	13.0	5.8	5.8	30.2
1972	100.0	14.5***	2.6	12.6	8.9	14.1	3.3	14.7	5.6	5.4	18.3
1973	100.0	10.6	2.7	14.0	9.6	13.6	3.1	16.0	5.5	5.1	19.8
1974	100.0	13.1	3.1	14.5	9.6	14.0	3.6	15.4	5.6	5.0	16.1
1975	100.0	16.6	3.0	13.0	8.6	12.8	3.5	14.4	4.8	4.2	19.1
1976	100.0	16.8	3.0	12.6	8.7	12.9	3.4	17.2	1.8	3.8	19.8
1977	100.0	17.3	4.5	11.9	9.0	10.4	2.4	13.5	6.7	3.6	20.7
1978	100.0	20.0	3.9	13.3	9.1	9.1	3.0	16.1	4.3	3.6	17.6
1979	100.0	19.4	3.8	13.1	8.9	9.0	2.7	17.1	3.5	3.3	19.2
1980	100.0	19.2	3.3	12.4	8.9	9.1	2.6	17.6	3.2	3.0	20.7

*Operating expenditures do not include debt service or capital expenditures.

**Prior to 1969, some of the functions of the Department of Environmental Management were included within the Department of Public Works.

***County administrative costs in FY1972 contain employee benefits in personnel costs for the first time. These costs were formerly in the other operating expenditures column.

Sources: County of Fairfax, Virginia, Report on Audit, Schedules B-1 and B-2 for FY1962 to FY1967.
County of Fairfax, Virginia Accountants' Report, Financial Statements and Supplementary Data, for FY1968 to FY1980.

IX GOVERNMENT SERVICES

SELECTED RESOURCE AND SERVICE INDICATORS BY COUNTY AGENCY

Fairfax County, FY1975 to FY1980

Agency and Program	Resource and Service Indicators	Fiscal Year					
		1975	1976	1977	1978	1979	1980
Department of Animal Control	Animal Wardens ¹	12	10	16	16	17	17
	Animal Caretakers	10	10	10	10	10	10
	Dog Licenses Sold	27,870	27,414	25,342	26,094	22,339	21,505
	Citizen Complaints Responded To	11,229	11,188	13,699	16,770	15,393	15,835
	Reported Bite Cases	1,688	1,614	1,495	1,251	1,187	1,203
	Animals Impounded	11,443	11,576	12,421	13,164	14,077	13,547
	Stray Animals Redeemed	2,441	2,552	2,849	2,936	2,838	2,971
	Animals Adopted	3,515	2,908	3,160	3,232	3,138	3,189
	Injury Cases Responded To	516	459	595	982	992	1,146
	Summons Issued by Wardens	1,220	1,198	1,680	2,900	2,271	1,653
	Warnings Issued by Wardens	945	1,855	2,113	2,561	2,258	2,165
Office of Assessments**							
Real Estate	Parcels (Locally Assessed, Tax Exempt and Public Service)	164,246	171,020	180,311	190,422	199,381	207,606
Personal Property	Tax Returns Received	191,029	204,927	215,075	243,326	249,802	269,391
Elderly/Disabled Relief Program ²	Real Estate - Applications Approved	946	1,032	1,055	1,183	1,380	1,368
	Real Estate - Relief Granted (in dollars)	428,658	544,604	639,645	763,704	910,882	1,037,606
	Rent Relief - Applications Approved	646	704	714	777	885	886
	Rent Relief - Relief Granted (in dollars)	169,410	192,858	202,661	212,600	239,358	235,818
Circuit Court	Judges	9	10	10	8	9	9
	Law Cases Commenced	2,732	2,757	2,681	2,590	2,933	3,300
	Chancery Cases Commenced	3,426	3,841	3,943	4,281	4,496	4,694
	Criminal Cases Commenced	1,289	1,803	2,226	2,797	2,765	3,340

SELECTED RESOURCE AND SERVICE INDICATORS BY COUNTY AGENCY

Fairfax County, FY1975 to FY1980

Agency and Program	Resource and Service Indicators	Fiscal Year						
		1975	1976	1977	1978	1979	1980	
Clerk of the Circuit Court	Staff	48	54	56	60	64	75	
	Wills Admitted to Probate	1,051	972	921	1,030	980	887	
	Deeds Admitted to Record	48,877	56,361	66,944	84,937	101,040	99,413	
	Marriage Licenses Issued	4,234	4,318	4,669	4,834	4,957	5,193	
	Passport Applications Executed	752	1,541	1,712	1,843	1,773	1,761	
	Civil Subpoenas Issued	*	*	6,074	7,119	7,255	7,764	
	Criminal Subpoenas Issued	*	*	6,333	6,504	7,421	7,838	
	Financing Statements Filed	*	*	11,910	13,195	13,005	12,084	
	Judgment Liens Filed	*	*	4,693	4,921	5,246	5,621	
	Charters Recorded	*	*	*	4,280	5,632	6,630	
	Office of Comprehensive Planning	Nominations for Annual Plan Review Received	*	91	246	143 ³	252	107
		Public Facility Proposals Reviewed	80	90	100	100	100	81
		Capital Improvement Projects Evaluated	450	520	530	550	550	540
New Rezoning Applications Filed		166	96	135	158	137	132	
Special Exception Applications Filed		8	24	15	147	104	153	
Special Permit Applications Filed		125	146	138	117	102	102	
Variance Applications Filed		122	170	189	219	199	251	
Appeal Applications Filed		0	1	2	4	7	11	
Nonresidential Use Permits Issued		1,266	1,352	1,365	1,481	1,350	1,849	
Sign Permits Issued		396	399	529	540	574	809	
Home Occupation Permits Issued		875	1,147	1,384	1,693	1,795	1,667	
Department of Consumer Affairs		Total Requests for Assistance	15,422	20,119	22,723	29,226	28,721	29,648
	Complaints	6,467	4,342	3,454	4,295	4,371	4,242	
	Requests for Advice	8,955	15,777	19,269	24,931	24,394	25,406	
	Total Requests Resolved	15,293	19,369	22,823	29,054	28,666	29,816	
	Value of Complaints at Issue (in dollars)	913,314	539,912	313,871	435,807	596,000	564,300	
	Value of Complaints Resolved (in dollars)	413,857	255,298	240,653	285,392	423,500	331,700	

SELECTED RESOURCE AND SERVICE INDICATORS BY COUNTY AGENCY

Fairfax County, FY 1975 to FY 1980

Agency and Program	Resource and Service Indicators	Fiscal Year					
		1975	1976	1977	1978	1979	1980
Data Processing							
Cooperative Computer Center	Jobs Processed	114,918	120,314	137,612	135,641	132,558	135,710
	Teleprocessing Transactions (in thousands)	4,502	5,861	6,404	7,116	10,186	12,142
Office of Research and Statistics	Programmers	31	27	26	26	24	24
	Systems Analysts ⁴	15	9	9	11	11	11
	Programs	1,850	1,970	2,230	2,330	2,440	2,549
	Systems	28	33	38	40	42	40
	Agencies Supported by Computer Systems	15	18	18	19	22	35
	Lines of Analysis/Correspondence Processed	*	*	146,430	262,633	305,331	511,300
	Requests for Statistical Information	*	*	1,916	2,173	2,618	2,484
Department of Environmental Management	Site Improvement Plans Approved	1,689	1,821	2,303	2,915	3,646	2,740
	Structural Plans Processed	N/A	N/A	2,058	2,953	3,266	2,579
	Construction Permits Issued	36,053	46,040	57,960	63,901	66,281	59,894
	Authorized Value of Construction (in millions)	156	214	320	475	655	580
Department of Extension and Continuing Education	Persons Assisted	680,755	686,853	830,584	1,275,424	1,325,565	1,285,450
	Educational Programs	2,963	1,130	1,273	3,880	1,494	1,410
Fire and Rescue Services	Fire Stations**	24	25	26	26	28	29
	Authorized Staff and Station Personnel	674	697	703	739	812	875
	Fire Vehicles**	132	144	136	132	129	126 ⁶
	Ambulances**	39	44	45	41	40	33

4-X1

SELECTED RESOURCE AND SERVICE INDICATORS BY COUNTY AGENCY

Fairfax County, FY1975 to FY1980

Agency and Program	Resource and Service Indicators	Fiscal Year					
		1975	1976	1977	1978	1979	1980
Fire and Rescue Services (continued)	Mobile Intensive Care Units**	0	0	1	5	6	8
	Fire-Related Deaths (citizen)**	5	13	28	16	6	13
	Fire-Related Injuries (citizen)**	82	74	83	73	74	86
	Building Fires**	944	924	1,023	929	927	1,011
	Outside Fires**	1,714	2,365	2,365	1,958	1,615	1,089
	Vehicle Fires**	800	891	1,058	997	1,042	1,091
	Ambulance Calls**	25,355	27,531	29,237	33,426	39,133	43,489
	Average Emergency Fire Apparatus Response Time (in minutes)	*	*	*	4.8	4.9	*
	Average Emergency Medical Apparatus Response Time (in minutes)	*	*	*	4.5	4.5	*
	Value of Fire Loss (in thousands of dollars)**	5,443	5,733	8,339	10,180	6,758	7,867
General District Court	Judges ⁷	5	5	6	6	7	7
	Criminal Cases	15,602	12,534	22,207	27,424	31,635	34,996
	Traffic Cases	73,184	94,750	101,587	110,928	107,773	116,152
	Civil Cases	15,785	23,871	24,982	28,819	34,653	39,801
	Mental Hearings	646	984	1,284	1,410	1,633	1,767
	Mental Hearings per 1,000 Population	1.20	1.77	2.26	2.44	2.73	2.96
	Falls Church Cases ⁹	*	*	7,199	7,891	6,471	6,825
	Fairfax City Cases	*	*	*	8,527	7,804	8,894
	General Services Purchasing ¹⁰	Purchase Orders Issued	*	21,203	20,147	20,978	21,422
Value of Purchase Orders Issued (in millions of dollars)		*	37.6	39.8	49.4	58.3	70.2
Competitive Solicitations		1,009	885	856	1,114	1,569	1,107

SELECTED RESOURCE AND SERVICE INDICATORS BY COUNTY AGENCY

Fairfax County, FY 1975 to FY 1980

Agency and Program	Resource and Service Indicators	Fiscal Year					
		1975	1976	1977	1978	1979	1980
General Services (continued)							
Energy Consumption ¹¹	Gasoline - Gallons Used (in thousands)	2,431.8 ¹²	3,939.9	3,819.9	4,088.5	4,633.0 ¹³	4,673.5 ¹³
	Diesel Fuel - Gallons Used (in thousands)	215.2	394.6	374.9	434.7	502.7	511.7
	Heating Fuel - Gallons Used (in thousands)	6,261.5 ¹²	7,275.0	7,556.7	7,114.9	8,091.3	*
Vehicle Fleet ¹⁴	Vehicles in Fleet	2,374	2,414	2,441	2,427	2,463	2,538
	Maintenance and Operating Cost Per Mile (in cents)	17.5	16.9	18.6	20.2	22.6	28.8
Juvenile and Domestic Relations District Court	Judges	3	3	3	4	4	4
	Professional Staff	58	51	51	58.5	62.5	71.0
	Juvenile Complaints, Nontraffic	5,040	4,580	7,002	8,539	9,222	9,301
	Juvenile Traffic Complaints	6,284	6,654	7,544	7,954	8,686	8,880
	Adult Complaints (includes support)	2,500	1,915	3,756	3,486	3,770	4,336
	Docketed Court Transactions	10,762	13,095	23,268 ¹⁵	23,616	26,135	25,375
	Juvenile Offenders (excludes traffic)	*	*	*	5,420	5,792	5,570
	Adult Offenders	*	*	*	2,584	2,873	3,200
	Juvenile Detentions in Detention Home ¹⁶	707	606	672	486	549	532
	Average Stay in Detention Home (in days)	10.4	12.6	11.0	13.0	16.8	13.4
	Juvenile Detentions in Jail	200	168	126	124	150	158
Average Stay of Juveniles in Jail (in days)	6.5	9.2	10.8	12.4	12.3	10.1	
Library	Libraries	17	17	17	17	17	17
	Bookmobiles	3	3	2	2	2	2
	Circulation (in thousands)	4,834	5,017	4,952	5,064	4,956	5,080
	Registered Borrowers	263,179	270,073	277,637	241,961	137,377	169,337
	Books (in thousands)	1,148	1,245	1,321	1,321	1,321	1,426
	Book Titles	171,542	186,065	198,695	211,867	225,205	239,942
	Information Questions	1,193	1,278	1,536	1,607	1,569	1,661

9-XI

SELECTED RESOURCE AND SERVICE INDICATORS BY COUNTY AGENCY

Fairfax County, FY 1975 to FY 1980

Agency and Program	Resource and Service Indicators	Fiscal Year					
		1975	1976	1977	1978	1979	1980
Office of Personnel** 18	Employees Administered	7,717	7,950	8,580	9,111	9,961	10,160
	Employees on January 1	6,363	6,073	5,998	6,733	6,930	7,512
	Terminations	1,644	1,952	1,847	2,181	2,461	2,192
	Appointments	1,354	1,877	2,582	2,378	3,043	2,648
	Employees on December 31	6,073	5,998	6,733	6,930	7,512	7,968
	Paychecks Issued	147,235	156,049	150,496	170,305	177,871	187,942
	→ Applications Received	11,776	15,390	15,753	23,085	23,993	21,358
Police Department	Personnel per 1,000 Population						
	Civilian	.27	.35	.35	.35	.57	.61
	Sworn	1.15	1.19	1.18	1.20	1.26	1.25
	Total	1.42	1.54	1.53	1.55	1.83	1.86
	Calls for Service						
	Part I Crimes (concerning index crimes)	*	*	*	25,318	26,554	29,260
	Part II Crimes (concerning less serious crimes)	*	*	*	86,744	93,583	101,036
	Traffic Crimes	*	*	*	36,744	39,650	34,171
	Other Crimes	*	*	*	13,468	14,244	16,022
	Total Crimes	148,810	148,351	156,700	170,300	174,031	180,489
	Index Crimes per 100,000 Population						
	Murder	4.27	4.52	2.67	2.24	3.42	1.25
	Rape	26.63	18.07	14.69	16.26	17.09	22.86
	Robbery	103.25	68.17	73.28	84.11	87.41	83.23
	Aggravated Assault	54.67	46.56	54.58	55.70	60.79	50.19
	Burglary	1,216.26	1,004.72	994.08	1,034.02	916.73	974.64
	Larceny	3,249.19	2,891.16	2,458.21	3,879.81	3,058.63	3,164.49
Motor Vehicle Theft	446.75	348.53	308.40	336.64	306.12	288.99	
Total Index Crimes	5,101.02	4,381.73	3,905.92	4,408.79	4,450.19	4,585.65	

SELECTED RESOURCE AND SERVICE INDICATORS BY COUNTY AGENCY

Fairfax County, FY1975 to FY1980

Agency and Program	Resource and Service Indicators	Fiscal Year					
		1975	1976	1977	1978	1979	1980
Police Department (continued)	Clearance Rates of Index Crimes (percent)						
	Murder	109.52	100.00	57.14	66.67	89.47	94.74
	Rape	28.24	34.78	36.36	25.29	52.63	49.47
	Robbery	22.83	30.26	21.61	28.44	32.72	29.42
	Aggravated Assault	43.12	45.15	39.86	48.99	56.51	63.03
	Burglary	12.32	13.71	11.36	19.52	31.35	21.02
	Larceny	9.30	6.72	9.95	13.63	16.61	15.00
	Motor Vehicle Theft	14.60	25.20	12.93	26.10	30.20	31.45
	Total Clearance Rate	11.30	10.78	11.31	16.76	21.63	18.68
	Arrests						
	Part I Offenses (concerning index crimes) Juvenile Arrests	853	1,012	1,050	1,483	1,362	1,159
	Part I Defenses (concerning index crimes) Adult Arrests	2,033	2,047	1,696	2,360	2,537	2,372
	Other Criminal Offenses Juvenile Arrests	2,358	1,716	1,700	1,491	2,001	1,970
	Other Criminal Offenses Adult Arrests	11,392	9,456	9,823	11,626	13,395	14,061
	Traffic - All Arrests	40,677	49,849	52,743	65,932	57,031	59,795
	Total Arrests	57,313	64,080	67,012	81,892	76,326	79,357
	Accidents						
	Fatal	40	48	47	51	56	51
	Personal Injury	2,877	2,642	3,092	3,421	3,759	3,572
	Other	9,789	14,226	16,728	17,836	19,603	17,484
	Total Accidents	12,706	16,916	19,867	21,308	23,418	21,107
	Accidents per 100,000 Population	2,582.52	3,323.28	3,791.41	3,982.80	4,211.87	3,572.01

SELECTED RESOURCE AND SERVICE INDICATORS BY COUNTY AGENCY

Fairfax County, FY 1975 to FY 1980

Agency and Program	Resource and Service Indicators	Fiscal Year					
		1975	1976	1977	1978	1979	1980
Department of Public Works	Wastewater Flow Treated (millions of gallons per day) in County Facilities	35.69	37.22	34.37	35.93	34.93	35.80
	Additional Dwelling Units Added to System	3,669	2,911	3,728	5,643	7,066	8,922
	Total Miles of Sewer in System	1,631.70	1,676.55	1,707.30	1,754.32	1,866.69	1,936.06
	Average Number of Units Served Per Day by County Collection	6,300	6,400	6,400	6,500	6,700	6,700
	Thousand Tons of Refuse Disposed at County Landfill (I-66)	263.7	261.2	265.6	290.4	308.9	327.0
Department of Recreation and Community Services	Summer Playground Programs	114	111	110	106	111	115 ¹⁹
	Attendance	200,808	168,337	168,766	148,389	159,142	157,805
	Community Centers	16	19	20	21	21	22
	Average Daily Attendance	38.8	48.2	36.8	75.0	104.6	104.1
	Senior Citizen Organizations ²⁰	47	49	52	55	78	78
	Members (estimate)	3,000	4,000	4,500	4,500	6,500	6,500
	Senior Citizen Discount Program Registrations	*	9,249	12,195	14,432	16,645	19,567
	Senior Citizen Nutrition Programs	1	2	3	4	4	5
	Meals Served	8,231	12,785	19,568	27,035	33,070	42,748
	Office of the Sheriff	Judges Served (full-time)	17	17	18	19	19
Courtrooms	18	18	20	20	20	22	
Court Locations	4	4	5	5	5	5	
Court Security Officers (full-time)	14	14	15	18	19	21	
Court Security Officers (part-time)	10	10	14	14	15	14	
Court Services Officers	9	10	10	11	11	13	
Processes Served ²¹	87,486	92,509	80,831	93,285	105,486	110,492	
Detention Staff ²¹	41	41	41	91	101	110	

SELECTED RESOURCE AND SERVICE INDICATORS BY COUNTY AGENCY

Fairfax County, FY 1975 to FY 1980

Agency and Program	Resource and Service Indicators	Fiscal Year						
		1975	1976	1977	1978	1979	1980	
Office of the Sheriff (continued)	Detention Cells ²¹							
	Receiving	One Cell Block Was Used As Needed For Receiving				26	26	26
	Permanent	139	139	139	186	186	186	
	Work Release ²²	15	15	15	30	30	30	
	Female	0	0	0	12	12	12	
	Inmate Days in Adult Detention	56,761	64,585	59,943	69,602	87,602	96,522	
Department of Social Services ²³	Applications for Assistance Received	11,979	14,609	15,437	16,254	19,681	27,874	
	Applications for Assistance Processed	11,658	13,877	15,639	16,188	19,652	27,817	
	Assistance Cases Closed	6,091	10,091	11,592	11,314	13,340	17,720	
	Average Number of Cases Receiving Assistance per Month	6,955	8,927	11,492	11,872	12,855	16,076	
	Assistance Programs							
	Aid to Cuban and/or Indo-Chinese Refugees ²⁴							
	Persons	3	119	182	183	284	598	
	Dollars	5,426	293,037	566,657	574,512	999,084	1,941,966	
	Aid to Disabled							
	Persons	40	28	24	18	11	8	
	Dollars	68,589	64,735	10,371	11,899	19,577	20,677	
	Aid to Aged							
	Persons	55	31	21	14	10	10	
	Dollars	75,478	75,163	16,272	5,455	14,104	20,042	
	Aid to Blind							
	Persons	4	2	2	1	1	0	
	Dollars	2,273	1,048	1,048	644	267	0	
	Foster Care							
	Persons	304	266	226	247	297	282	
	Dollars	1,046,186	1,121,875	605,853	655,894	642,483	788,234	
ADC Foster Care ²⁴								
Persons	454	552	113	97	26	9		
Dollars	593,242	730,498	248,366	214,075	38,712	23,039		

SELECTED RESOURCE AND SERVICE INDICATORS BY COUNTY AGENCY

Fairfax County, FY 1975 to FY 1980

Agency and Program	Resource and Service Indicators	Fiscal Year					
		1975	1976	1977	1978	1979	1980
Department of Social Services (continued)	Work Incentive Child Care ²⁵						
	Persons	68	38	25	28	18	11
	Dollars	67,314	41,002	21,910	33,583	17,076	19,728
	Aid to Dependent Children ^{25, 26, & 27}						
	DSS-Issued Payments						
	Families	*	*	2,162	117	130	175
	Thousands of Dollars	5,547	6,380	4,839	719	959	1,115
	State-Issued Payments						
	Families	*	*	*	2,114	2,098	2,260
	Thousands of Dollars	*	*	*	6,469	6,999	7,658
	General Relief ²⁶						
	Families	*	*	574	498	661	649
	Thousands of Dollars	883	1,007	1,053	1,139	1,495	1,672
	Emergency Assistance ^{24 & 26}						
	Families	45	35	7	2	1	1
	Dollars	139,783	144,882	22,313	5,780	2,470	533
	Tenant Deposits						
Families	324	234	233	220	244	224	
Dollars	39,796	33,485	35,971	31,311	42,902	45,690	
State/Local Hospitalization							
Patient Days	3,717	5,160	3,072	3,660	3,108	3,814	
Dollars	434,958	539,000	418,776	561,818	587,241	750,169	
Title XX Purchased Services ²⁸							
Persons	*	23	3,094	3,130	2,458	2,419	
Thousands of Dollars	*	86	2,463	2,981	3,189	2,950	

*Data are not available.

**Data are for calendar years.

SELECTED RESOURCE AND SERVICE INDICATORS BY COUNTY AGENCY

Fairfax County, FY1975 to FY1980

NOTES

- ¹Data exclude CETA positions.
- ²1978 is the first full operating year of the Disability Relief Program.
- ³Limited review year, under the three-year cycle policy established in 1979. The years 1980 and 1981 are designated "limited review years," followed by a "full review" in 1982.
- ⁴Data reflect the reclassification of a Management Analyst and a Programmer position in 1978, not an increase in agency personnel.
- ⁵Fairfax City separated from the Fairfax County Fire and Rescue Services system in May 1978.
- ⁶Represents vehicles used in suppression only.
- ⁷A seventh judge was added to the General District Court in April 1978.
- ⁸Falls Church City criminal, civil, and traffic cases began being tried by a judge of the Fairfax County General District Court in September 1976.
- ⁹Fairfax City criminal, civil, and traffic cases began being tried by a judge of the Fairfax County General District Court in October 1976.
- ¹⁰Data include purchasing information for the Fairfax County Administration, Public Schools, and Park Authority.
- ¹¹Data include energy management information for the Fairfax County Administration, Public Schools, Park Authority, and Water Authority.
- ¹²Data based on seven months usage in FY1975.
- ¹³Data for FY1979 and thereafter reflect fuel purchases rather than usage.
- ¹⁴Data include fleet information for the Fairfax County Administration and Public Schools.
- ¹⁵The Juvenile and Domestic Relations District Court began hearing traffic cases in FY1977.
- ¹⁶The Juvenile Detention Home operated with diminished capacity due to repairs, August to October 1977.
- ¹⁷The decrease in the number of registered borrowers in 1978 is due to new library registration policies which require annual registration.
- ¹⁸Data include information on both full-time and part-time employment.
- ¹⁹Data for FY1980 are derived from attendance figures in July and August 1979 and June 1980.
- ²⁰Data include national senior citizen organizations beginning May 1979.
- ²¹The new detention facility opened in February 1978.
- ²²Before the new detention facility opened in February 1978, the work release inmates lived in a dormitory which on occasion held up to 24 persons.
- ²³Includes the Cities of Fairfax and Falls Church.
- ²⁴Expenditures are paid by Federal/State funds.
- ²⁵Ninety percent or more of the expenditures are paid by Federal/State funds.
- ²⁶Data represent average number of families assisted per month.
- ²⁷After April 1, 1977, ongoing ADC payments were assumed by the State and are no longer reflected in Fairfax County Department of Social Services ADC expenditures.
- ²⁸Seventy-five percent or more of the expenditures are paid by Federal/State funds.

SELECTED RESOURCE AND SERVICE INDICATORS FOR

THE OFFICE FOR CHILDREN

Fairfax County, FY1974 and FY1980

Resource and Service Indicators	Fiscal Year		Change 1974-1980
	1974	1980	
Licensed Day Care Centers	52	79	27
Children Enrolled in Day Care Centers	3,000	6,000	3,000
Children Receiving County Subsidy for Day Care	161	270	109
Extended Day Care Centers in Elementary Schools (Before and After School Hours)	0	21	21
Children Enrolled in Extended Day Care	0	600	600
Private Home Day Care Providers Trained by the Office for Children	0	147	147
Day Care Centers Receiving Technical Assistance from the Office for Children	8	65	57

Source: Fairfax County Office for Children

VOTER REGISTRATION AND ELECTION INFORMATION

Fairfax County, 1968 to 1980

Year	Number of Registered Voters as of November	Number Voting in General Election	Voter Turnout (Percent)
1968	137,729	117,939	85.6%
1969*	127,107	69,359	54.6
1970	134,017	89,773	66.9
1971	144,744	73,649	50.9
1972	208,945	172,601	82.6
1973*	197,761	98,332	49.7
1974**	206,119	116,858	56.7
1975	213,952	90,426	42.3
1976	262,613	207,016	78.8
1977	244,122	128,733	52.7
1978	249,699	137,861	55.2
1979	244,969	103,475	42.4
1980	298,171	241,112	80.86

*Registration Books were purged in 1969 and 1973.

**Effective December 31, 1974, and annually thereafter, the name of any registered voter who has not voted at least once during four consecutive calendar years is removed from the voter registration records.

Source: Office of the Electoral Board and General Registrar, Fairfax County.

ELECTION SCHEDULE

Fairfax County, 1972 - 1982

Elected Officials	Term	Last Elected														
			1972	1973	1974	1975	1976	1977	1978	1979	1980	1981	1982			
<u>Fairfax County</u>																
Board of Supervisors	4 years	1979														
Commonwealth's Attorney	4 years	1979														
Sheriff	4 years	1979														
Clerk of the Court	8 years	1975														
<u>Commonwealth of Virginia</u>																
Governor (cannot serve two successive terms)	4 years	1977														
Lt. Governor	4 years	1977														
Attorney General	4 years	1977														
State Senators (5)	4 years	1979														
Members of House of Delegates (10)	2 years	1979														
<u>United States</u>																
President and Vice President	4 years	1976														
United States Senators (2) (staggered terms)	6 years	1978 1976														
Congressmen—8th and 10th Districts	2 years	1978														

IX-15

Source: Office of the Electoral Board and General Registrar, Fairfax County.

ASSISTED HOUSING UNITS BY SOURCE OF ASSISTANCE

Fairfax County, 1978, 1979, and 1980

Source of Assistance	Housing Units		
	1978*	1979*	1980**
<u>Fairfax County Redevelopment and Housing Authority (FCRHA) Operated</u>			
Owned	282	301	337
Leased	658	751	736
Proposed	89	256	460
Total FCRHA Operated	<u>1,029</u>	<u>1,308</u>	<u>1,533</u>
<u>Federal/State Assisted</u>			
Occupied/Rental	2,953	3,143	3,291
Occupied/Owner	122	239	285
Under Construction/Rental	290	748	799
Under Construction/Owner	114	260	295
Proposed	675	691	990
Total Federal/State Assisted	<u>4,154</u>	<u>5,081</u>	<u>5,660</u>
<u>Federal/Local Rehabilitation</u>	135	178	263
<u>Total Assisted</u>			
Existing	4,150	4,438	4,912
Under Construction	404	1,008	1,094
Proposed	764	1,125	1,450
Total Assisted	<u>5,318</u>	<u>6,571</u>	<u>7,456</u>

*Data as of November for years cited.

**Data as of June for years cited.

Source: 1981 Annual Housing Action Program, Fairfax County Department of Housing and Community Development.

COMMUNITY HOSPITALS INPATIENT UTILIZATION

Fairfax County, 1980

Hospital	Number of Beds		Admissions		Average Daily Occupancy		Average Length of Stay (Days)
	Licensed	Operating	Number	Percent	Beds Occupied	Percent of Occupancy (Operating Beds)	
Commonwealth Doctors	160	135	5,954	13.8%	99.0	73.3%	6.2
Fairfax	656	638	31,416	72.7	521.0	81.7	6.3
Mount Vernon	237	150	5,856	13.5	132.0	88.0	8.5
County Total	1,053	923	43,226	100.0%	752.0		7.0

Source: Fairfax Hospital Association, Office of Planning

MILES OF ROADWAY
Fairfax County, December 1979

Roadway Type	Miles	
	Number	Percent
<u>Primary</u>		
Interstate	52.56	2.8%
Noninterstate	<u>98.46</u>	<u>5.2</u>
Total Primary	151.02	8.0%
<u>Secondary</u>		
Hard Surfaced	1,707.61	90.2%
All-Weather Surface (heavy gravel)	12.09	0.6
Light Surface (gravel)	15.64	0.8
Unsurfaced (no stone or little stone)	<u>7.94</u>	<u>0.4</u>
Total Secondary	1,743.28	92.0%
<u>Total Roadway</u>	1,894.30	100.0%

Source: Virginia Department of Highways and Transportation

METROPOLITAN WASHINGTON AIRPORT ACTIVITY

1978*, 1979*, and 1980**

Activity	Dulles International Airport			Washington National Airport		
	1978	1979	1980	1978	1979	1980
<u>Flights**</u> (Arrivals and Departures)	177,121	172,974	165,420	352,044	352,904	352,166
<u>Passengers</u>						
Domestic Scheduled	2,324,637	2,692,626	1,950,148	13,249,900	14,277,825	13,570,421
Domestic Nonscheduled	17,438	14,067	2,797	0	0	0
International Scheduled	564,864	575,683	474,432	0	0	0
International Nonscheduled	56,567	29,589	7,252	0	0	0
Air Taxi (Commuter Airlines)	12,325	26,587	22,415	489,603	632,587	723,930
General Aviation	125,076	124,298	110,854	209,636	223,614	244,095
Military	43,693	62,204	56,495	0	0	0
Total Passengers	3,144,600	3,525,054	2,624,393	13,949,139	15,134,026	14,538,446
<u>Cargo (000 lbs.)</u>						
Mail - Domestic	37,980	41,617	40,443	96,247	97,939	105,548
Mail - International	6,016	6,517	6,946	0	0	0
Freight - Domestic	39,336	38,895	25,787	86,282	75,848	56,373
Freight - International	36,332	33,916	28,951	0	0	0
Total Cargo	119,664	120,945	102,127	182,529	173,787	161,921

*Data reflects twelve month period from October through September of the years cited.

**Data reflects calendar year of years cited.

Source: Federal Aviation Administration

X GLOSSARY

GLOSSARY OF TERMS

ADJUSTED GROSS INCOME is reported on State of Virginia Income Tax Returns. It includes gross income from all sources (not specifically excluded) minus certain deductions. Examples of major sources of income that are excluded include Social Security benefits and employer contributions for private pension and health programs. The data cover all people required to file a return and include persons with incomes below filing requirements who were subject to tax withholding and claimed a refund.

ASSESSED VALUE refers to the estimated value of property for use in taxation.

AT-PLACE EMPLOYMENT refers to jobs that are filled and are located within a particular area.

AVERAGE HOUSEHOLD SIZE refers to the number of persons residing within a household. It is computed by dividing the total population in households by the total number of households.

BIRTH RATE refers to the number of births per 1,000 persons in the population.

CALENDAR YEAR refers to a one-year period beginning on January 1 and ending on December 31.

CONSUMER PRICE INDEX (CPI) is a concept developed by the U.S. Bureau of Labor Statistics. It is used to measure average changes in prices of goods and services usually purchased by urban wage earners and clerical workers from a designated reference date (1967, which equals 100.0). A CPI of 195.2 means that prices for that good or service has increased by 95.2 percent since 1967.

DEATH RATE refers to the number of deaths per 1,000 persons in the population.

DEPOSITS are monies held within both checking and savings accounts.

DEVELOPMENT PIPELINE refers to the entire land development process and includes the rezoning of land, site plan submission and review, the issuance of building permits, and the construction of the physical structures.

DISPOSABLE PERSONAL INCOME consists of personal income minus personal taxes (Federal, State, and local), nontax payments (such as fines, fees, and penalties), and personal contributions to social insurance. Generally, it is equivalent to "effective buying income."

EFFECTIVE BUYING INCOME is a concept developed by Sales and Marketing Management. It consists of personal income minus personal taxes (Federal, State, and local), nontax payments (such as fines, fees, and penalties), personal contributions to social insurance, and compensation paid to military and diplomatic personnel stationed overseas. Generally, it is equivalent to "disposable personal income."

EFFECTIVE INTEREST RATE is the contract interest rate and additional fee (such as points) assumed by the buyer at the time of purchase amortized throughout the projected life of the loan.

Glossary of Terms (continued)
Page 2

EMPLOYED persons are civilians in the labor force 16 years old and over who are employed.

A FAMILY consists of a household head and one or more persons living in the same household who are related to the head by blood, marriage, or legal adoption.

FAMILY BUDGET LEVEL represents the costs of three hypothetical lists of goods and services that were specified to portray three relative standards of living -- described as lower, intermediate, and higher -- and does not represent how families actually do or should spend their money.

FAMILY INCOME is a concept developed by the U.S. Bureau of the Census. It refers to the combined gross money income of all members of a family.

A FINANCIAL INSTITUTION is any business which accepts money deposits. Included are savings and loan associations and credit unions (known as thrift institutions) and commercial banks.

FISCAL YEAR refers to a one-year period beginning on July 1 and ending on June 30 of the year cited.

FORECASTS are projections tempered by policy estimates (i.e., reconciliation of past and current trends with current and future policy).

GEOGRAPHIC MOBILITY refers to the movement of the head of household, comparing his or her place of residence during different time periods.

GROSS FLOOR AREA is the area within the perimeter of the outside walls of a building taking into account the number of stories contained in the structure. Space used for interior features such as stairwells and elevator shafts is included in the gross floor area.

A HOUSEHOLD includes all persons who occupy a single housing unit. A household may be comprised of one or more families, one or more unrelated individuals, or a combination of families and unrelated individuals.

HOUSEHOLDER refers to the individual in whose name the home is owned or rented; or any household adult member over 15 if the owner or renter is not present. At any given time, only one person may be considered as the householder, although the home may be jointly owned or rented.

ILLEGITIMATE BIRTHS are births of infants whose mothers were not married to their fathers at the time of birth or any time during the preceding ten months.

INFANT DEATHS are deaths of children under one year of age.

LABOR FORCE includes all persons 16 years old and over who are either employed or unemployed but actively looking for work and are available to accept employment, plus the members of the Armed Forces.

MEDIAN refers to the value which divides a distribution into two equal parts, one half having values above the median, and half having values below this level.

MONEY INCOME is a concept developed by the U.S. Bureau of the Census. It is the amount of income before deductions for personal income taxes, Social Security, bond purchases, union dues, medicare deductions, et cetera. Excluded is money received for the sale of personal property, capital gains, imputed and in-kind income, gifts and inheritances, and other types of lump-sum receipts. Money income is similar to personal income except money income excludes imputed and in-kind income.

NET DEBT is the difference between total long-term indebtedness and self-supporting debt. Net debt is paid from the general funds.

NET IN-MIGRATION is defined as the excess of people moving into an area over people moving out of the area.

PER CAPITA INCOME is the average amount of total personal income available to each person residing within an area. It is computed by dividing the total personal income earned by residents within an area by the total population within the area.

PERSONAL INCOME is a concept developed by the U.S. Bureau of Economic Analysis. It is a broader income concept than adjusted gross income or money income. Personal income consists of wage and salary disbursements, proprietor's income, net rental income, dividends, personal interest income, and transfer payments (such as pensions and welfare assistance). It includes wages and salaries paid in-kind, the net rental value of owner-occupied houses, the net value of food and fuel produced on farms, and imputed interest received by persons from financial intermediaries. Capital gains are not included because they are not attributable to current economic activity.

POVERTY THRESHOLDS are based on the Social Security Administration's definition of the minimum income that allows for a nutritionally adequate diet and adequate housing. It allows for differences in the size and composition of families and for differences in the cost of living between farm and nonfarm families. The poverty income cutoffs are revised annually to allow for changes in the cost of living as reflected in the Consumer Price Index.

PREMATURE BIRTHS are babies born after a gestation period of less than 37 weeks weighing 5 pounds, 8 ounces or less.

PRIVATE DEMAND DEPOSITS are monies held within personal checking accounts, usually in commercial banks.

PRIVATE TIME and SAVINGS DEPOSITS are monies held within personal savings accounts.

PROJECTIONS are numbers based upon trend analysis utilizing statistical techniques.

RELATIVE PRICE LEVEL INDICES refer to five categories of costs: food and beverages; housing; apparel and upkeep; transportation; and other goods and services. Each of the five categories comprise a varying number of subcategories. A sample of prices for each individual item is collected for each of eight metropolitan areas. The item prices are combined into subcategory price indicators, the subcategories into category price indicators, and the category into the total indices by using weights adapted from the U.S. Bureau of Labor Statistics weighting procedures developed for a typical urban worker household.

RESIDENT EMPLOYMENT refers to the employment of an area's residents, as compared to at-place employment which refers to the number of persons employed in an area whether or not they reside in the area.

SELF-SUPPORTING DEBT is paid by means of service charges and not from the County general fund. Included in this category are sanitary district bonds and integrated sewer system sewer bonds.

A SHOPPING CENTER is a group of commercial establishments with on-site parking which is planned, developed, owned, and/or managed as a unit and which is related in location, size, and type of shops to the trade area which it serves.

SCHOOL MEMBERSHIP is the sum of all students present and absent from school on a specific date.

TAXABLE SALES reflect deposits of Virginia sales tax revenues, adjusted for the dealer discount, rather than actual sales reported by the dealer.

UNEMPLOYED PERSONS are civilians in the labor force 16 years old and over who do not hold jobs but are actively looking for work and are available to accept employment.

UNEMPLOYMENT RATE is the percentage of the labor force that is unemployed.

URBAN FAMILY BUDGET is a concept developed by the U.S. Bureau of Labor. The costs of three hypothetical lists of goods and services are provided that portray three relative standards of living--described as lower, intermediate, and higher. These costs do not represent how families actually do or should spend their money but how they tend to spend their money.

VACANCY RATE is the percentage of total housing units that are unoccupied.

WASHINGTON SMSA refers to the Washington, D.C., Standard Metropolitan Statistical Area as defined by the U.S. Bureau of the Census. This area includes the District of Columbia; the Maryland Counties of Charles (as of 1973), Montgomery, and Prince George's; the Virginia Cities of Alexandria, Fairfax, Falls Church, Manassas, and Manassas Park; and the Virginia Counties of Fairfax, Arlington, Loudoun, and Prince William.

XI INDEX

INDEX

	<u>Page</u>
A	
Abortions	II-16
Age Distribution	II-11
Agricultural Characteristics	VII-19
Airport Activity	IX-19
Animal Control, Department of	IX-2
Assessed Value, Personal Property	VIII-5
Assessed Value, Real Property	VIII-5, VIII-6, VIII-7, VIII-8, VIII-9
Assessed Value, Tax-Exempt Property	VIII-7
Assessments, Office of	IX-2
Assistance Programs	IX-10, IX-11, IX-16
B	
Bank Deposits	VII-16, VII-17, VII-18
Births	II-13, II-14, II-15, II-16
Building Permit Activity	VI-21, VI-22, VII-15, IX-4
Business Establishments	VII-7, VII-8, VII-9
C	
Children, Office for	IX-13
Circuit Court	IX-2
Clerk of the Circuit Court	IX-3
Commercial/Industrial Acreage	VII-2
Commuting	IV-7, IV-9, V-7, V-8
Comprehensive Planning, Office of	IX-3
Condominiums	VI-4
Construction Activity	VI-21, VI-22, VII-14, VII-15, IX-4
Consumer Affairs, Department of	IX-3
Consumer Price Index	V-19
Cooperative Computer Center	IX-4
Crime	IX-7, IX-8
D	
Data Processing	IX-4
Deaths	II-16, II-17, II-18, II-19
Divorces	II-22, II-23
E	
Education, Per Pupil Cost of	III-7
Education, Years Completed	II-12, III-2, III-10
Election Information	IX-14, IX-15
Employment Forecasts	IV-6

E (Continued)

	<u>Page</u>
Employment, Commuting	IV-7, IV-9, V-7, V-8
Employment, Federal Government	IV-8, IV-9
Employment, Industrial	IV-4, VII-13
Employment, Occupation	II-12, IV-3
Employment, Place of Work	IV-2, IV-5, IV-7, IV-9, V-7, V-8
Employment, Total	IV-2
Environmental Management, Department of	IX-4
Extension and Continuing Education, Department of	IX-4

F

Family Budgets	V-16, V-17
Fire and Rescue Services	IX-5

G

General District Court	IX-5
General Services	IX-5, IX-6
Government Expenses	VIII-15, VIII-16
Gross Floor Area	VII-5

H

Handicapped	III-5
Hospitals	IX-17
Household Forecasts	II-25
Household Growth	II-24
Household Relationships	II-29
Household Size	II-26, II-27, II-28, VI-3
Households, Region	VI-16
Housing, Assisted	IX-16
Housing, Construction	VI-20, VI-21, VI-22
Housing, Inventory	VI-2, VI-3
Housing, Region	VI-16
Housing, Rent	II-12, VI-11, VI-12, VI-15
Housing, Rent/Income Ratio	VI-13, VI-14
Housing, Sales	VI-8, VI-9
Housing, Structure Type	VI-2, VI-3, VI-4
Housing, Vacancy Rate	VI-16, VI-17, VI-18, VI-19
Housing, Value	II-12, VI-5, VI-6, VI-7, VI-8, VI-10

I

In-Migration	II-20
Income/Rent Ratio	VI-13, VI-14
Income, Adjusted Gross	V-10, V-11, V-12
Income, Effective Buying Income	V-9

I (Continued)

	<u>Page</u>
Income, Family	II-12, V-2, V-4, V-7
Income, Household	V-3
Income, Money	V-2, V-3, V-4, V-5, V-6, V-7, V-8
Income, Per Capita	II-12, V-14, V-15
Income, Personal	V-13, V-14, V-15
Income, Poverty	V-20
Income, Sex of Householder	V-6
Industrial Firms	VII-12, VII-13
Industrial/Commercial Acreage	VII-2
Interest Rates	VI-23, VI-24

J

Juvenile and Domestic Relations District Court	IX-6
--	------

L

Land Area	I-4, I-5, I-6, VII-2
Library	IX-6
Licenses, Vehicle	VIII-10, VIII-11
Long-Term Indebtedness	VIII-12

M

Maps	I-2, I-3
Marriages	II-21, II-23
Mobility, Geographic	II-30

N

Net Debt	VIII-12, VIII-13, VIII-14
Nonresidential Development	VII-14, VII-15
Nonresidential Structures, Area	VII-5
Nonresidential Structures, Number of	VII-3, VII-4

P

Personnel, Office of	IX-7
Planning Districts, Map	I-3
Planning, Office of Comprehensive	IX-3
Police Department	IX-7, IX-8
Population Densities, Fairfax County	II-4, II-5
Population Estimates, Fairfax County	II-4, II-5
Population Growth, Fairfax County	II-2, II-3, II-6, II-20
Population Growth, Region	II-7
Population Projections, Fairfax County	II-6, II-8
Poverty	II-12, V-20

P (Continued)

	<u>Page</u>
Precipitation	I-9
Price Indices	V-18, V-19
Public Works, Department of	IX-9

R

Race, Composition	II-9, II-10
Recreation and Community Services, Department of	IX-9
Research and Statistics, Office of	IX-4
Retail Sales	VII-10, VII-11
Revenue Sources of the County	VIII-3, VIII-10
Roadway, Miles of	IX-18

S

Sales, Retail Taxable	VII-10, VII-11
Schools, Membership of	III-3, III-4
Schools, Number of Public	III-6
Schools, Salary of Personnel	III-8, III-9
Self-Supporting Debt	VIII-12
Sex, Composition	II-8
Sheriff, Office of the	IX-9, IX-10
Shopping Centers	VII-6, VII-7, VII-8
Social Services, Department of	IX-10, IX-11
Special Education	III-5, III-6
Square Miles of Land Area	I-4, I-5, I-6
Statistics, Office of Research and	IX-4
Supervisor Districts, Map of	I-2

T

Tax Collection	VIII-5
Tax Rates	VIII-2, VIII-4
Temperature	I-7, I-8

U

Unemployment	IV-12, IV-13
------------------------	--------------

V

Vacancy Rate	VI-16, VI-17, VI-18, VI-19
Vehicle Licenses	VIII-10, VIII-11

W

Wage Earners in Household	V-5, V-6
-------------------------------------	----------