

FAIRFAX COUNTY HEALTH AND HUMAN SERVICES **NEEDS ASSESSMENT 2019**

EXECUTIVE SUMMARY

A COMMON AGENDA
TO INFLUENCE AND
DRIVE CHANGE



INTRODUCTION

AN OVERARCHING VISION

In 2016, a Human Services Needs Assessment (Assessment) was completed to provide community leaders with a snapshot of population, economic, and infrastructure trends and needs in Fairfax County.

Since the release of the 2016 Assessment, the county continues to evolve and the challenges are becoming no less complex. Efforts to address needs outlined in the 2016 assessment were initiated and many are still being implemented. In addition, a [countywide strategic planning effort](#) is underway, which included extensive community engagement and will identify countywide priorities and initiatives. The 2019 Assessment is one of many initiatives used to inform the countywide strategic planning efforts and will help create a shared agenda to influence and drive change.

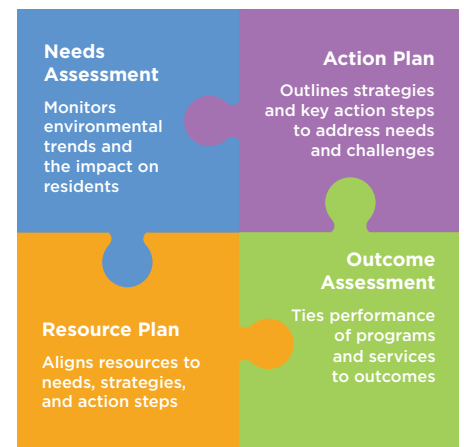
The 2019 Assessment is designed to build on the momentum of addressing needs and inform endeavors already in place. This Assessment will take a deeper dive into the trends and data of the community, utilizing existing resources to *transform the data into meaningful information and foster an integrated approach for continuous improvement*. The Assessment will also identify variations in need and, where possible, begin to highlight opportunities to achieve equity in communities.

The Assessment is for leaders, residents, and community stakeholders to develop a deeper understanding of crosscutting issues impacting the financial stability and social well-being of residents in the community. Additionally, the Assessment should reiterate the intersectionality among county agencies and community organizations and the collective power of these stakeholders to make measurable improvements.

THE HEALTH AND HUMAN SERVICES STRATEGIC FRAMEWORK

The Health and Human Services Needs Assessment is one of four tools within the Health and Human Services (HHS) Strategic Framework used to guide a coordinated and targeted approach to address challenges and improve outcomes. These four tools work together to:

- identify strengths and challenges of communities;
- forecast and prepare for policy, system, and environmental changes;
- facilitate transparency and communicate with stakeholders; and
- guide decisions at various levels across the organization.





ECONOMIC INEQUITIES



TRANSPORTATION INEQUITIES



HEALTH INEQUITIES

CREATING A DIALOGUE TO INFLUENCE AND DRIVE CHANGE

IMPACTING OUTCOMES ACROSS THE COMMUNITY

As Fairfax County continues to grow, the challenges and needs will continue to evolve as well. Understanding these changes and how they influence respective health and human services needs is vital in the continuous effort to successfully identify challenges, effectively plan and coordinate efforts, and efficiently align programs and services that help maintain a thriving community for all residents.

While the needs of the community remain broad and far-reaching, the 2019 Assessment was specifically designed to highlight a smaller number of needs that have significant systemwide impact. In preparing for the 2019 Assessment, all of the previous data and trends from the 2016 assessment were analyzed and substantiated through these questions: 1) Geographically, are there populations or areas inequitably impacted by these trends? 2) What is the size and scope of the number of individuals impacted? 3) Are there financial implications? 4) What is the impact to the community if these trends are left unaddressed? Three areas began to emerge that depict the pervasive challenges and needs across the community. Focusing in on these three areas will allow for more targeted investment opportunities and provide an opportunity to change the trajectory of the current trend.

In alignment with One Fairfax, a joint social and racial equity policy of the Fairfax County Board of Supervisors and School Board, the Assessment identifies three inequities that impact outcomes across the county:

Economic Inequities, **Transportation Inequities**, and **Health Inequities**.

To have the greatest impact on residents and communities moving forward, the dialogue or strategies must not be limited to areas directly under Health and Human Services.



LEVERAGING A COMPREHENSIVE APPROACH TO ADDRESS COMPLEX ISSUES

Health and Human Services has long strived for a community where every individual can achieve his or her full potential. Yet, in many pockets in the county, as this Assessment illustrates, the challenges to realizing this vision continue to remain deep and complex, resulting in inequities in opportunity and health outcomes.

Solutions require a comprehensive and collaborative approach. To change the trajectory of these trends and fully invest in the future, Health and Human Services cannot do it alone.

The county has invested in many strategic initiatives that have begun to integrate planning efforts across areas of work, helping to shape the future of the community. They include One Fairfax, affordable housing, early childhood learning, integrated health, opioid prevention and treatment, and Diversion First. Additionally, Fairfax County's overall Strategic Planning process is an overarching approach to align efforts and *"Shape the Future Together."* HHS' response has prompted greater integration across sectors to resolve complex challenges in the community, but there is still more to do.

ROLE OF GOVERNMENT

The trends and data outlined in this Assessment are meant to provoke action, build upon successes, and inspire combinations of newer, bolder strategies that address the specific needs of the community. It also provides insight into opportunity and acknowledges how local government plays many unique roles in changing the trajectory of these trends. These roles include:

Service Provider
Provide direct services and other resources to families in need.



Policy Maker
Use governing authority to enact policies or regulations as well as create or adjust programs that address challenges or prohibit predatory practices.

Convener
Bring stakeholders together to gain broad and meaningful insight into policy development and implementation.



Source: Condensed from Prosperity Now, "A Municipal Policy Blueprint for a More Inclusive Path for Prosperity"



Advocate for State Policy

Enact policy locally to advance broader state level policies that address challenges identified by local leaders that may extend beyond county or city limits.

Developer

Determine where projects are built and how they are financed, considering impacts on racial equity and directing opportunities towards targeted communities and minority-owned businesses.

Funder

Partner with community and faith-based organizations to provide funding, contracts, and other resources.

Employer

Demonstrate the effectiveness of workforce policies by enacting them first and being a model for businesses and other entities.

Working toward shared agendas, whether it is in collaboration within the community or across departments within the organization, can be challenging; but questioning and changing the framework can be a powerful tool to meet the needs of the community by investing in policy, equity, and infrastructure strategies.

APPENDIX A

WHAT CAN YOU DO?

A REFERENCE FOR COMMUNITY STAKEHOLDERS

To change the trajectory of these trends and fully invest in the future, community stakeholders can begin by:

Learning about the challenges facing residents and sharing this information with others

- Read the Assessment and learn how Fairfax County and the needs of the community are changing
- Share the report findings with your neighbors, friends, members of your faith community, co-workers, and others to increase awareness and help spur community dialogue
- Follow the Fairfax County strategic planning efforts to learn about the priorities and how they impact you

Giving back to your community with your time, expertise, and voice

- Identify and undertake a local project to help address a need in your community
- Volunteer with a local non-profit organization
- Become an active member of a community group, or public board, authority, or commission to provide feedback and share expertise

Working together to realize stronger outcomes

- Identify and develop new partnerships that address needs
- Bring together individuals from diverse backgrounds, experiences, and disciplines to provide greater opportunities for social and economic mobility
- Continue to strengthen partnerships between the private and public sectors to leverage resources, skills, and knowledge
- Share information, expertise, and resources through social media and other tools to collectively build solutions

Building a better tomorrow for all residents

- Evaluate policies and practices within your organization that could be modified to better serve residents and address needs
- Utilize findings from the report to help guide organizational planning and decision-making



12000 Government Center Parkway
Fairfax, VA 22035