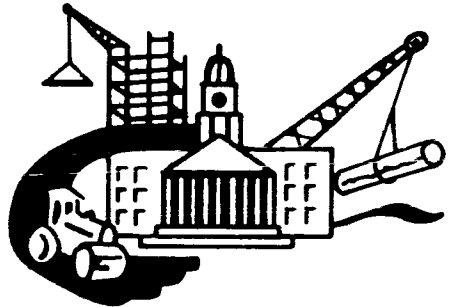


# Fairfax County Profile, 1977

Office of Research  
and Statistics  
Library

Do Not Remove

## Office of Research & Statistics



Community  
Development  
Branch

41-14

COUNTY OF FAIRFAX

\* \* \* BOARD OF SUPERVISORS \* \* \*

Mr. John Herrity  
Chairman

Mrs. Martha V. Pennino  
Vice-Chairman  
(Centreville District)

Mr. Joseph Alexander  
Lee District

Mr. John Shacochis  
Dranesville District

Mr. Warren I. Cikins  
Mt. Vernon District

Mr. James M. Scott  
Providence District

Mr. Alan H. Magazine  
Mason District

Mrs. Marie B. Travesky  
Springfield District

Mrs. Audrey Moore  
Annandale District

Leonard L. Whorton  
County Executive

Samuel A. Finz, Deputy County Executive  
for Planning and Development

4100 Chain Bridge Road  
Fairfax, Virginia 22030



FAIRFAX COUNTY PROFILE

Compiled by:

David W. Sheatsley  
Community Development Branch  
Office of Research and Statistics

1977

Price: \$2.25

For Sale by the Division of Administrative Services

Department of Environmental Management

The Fairfax Building

10555 Main Street

Fairfax, Virginia 22030

703-691-2781

Price: \$2.25

TABLE OF CONTENTS

	<u>Page</u>
I. POPULATION . . . . .	2
II. EDUCATION . . . . .	26
III. EMPLOYMENT, LABOR FORCE, AND INDUSTRY . . . . .	36
IV. INCOME . . . . .	58
V. HOUSING . . . . .	78
VI. REVENUES AND EXPENDITURES . . . . .	98
VII. MISCELLANEOUS . . . . .	112
VIII. INDEX . . . . .	126

Inquiries concerning the Fairfax County Profile should be directed to:

The Office of Research and Statistics

Community Development Branch

The Massey Building

4100 Chain Bridge Road

Fairfax, Virginia 22030

Telephone: (703) 691-3341

Errata

<u>Fiscal Period</u>	<u>Real Property</u>	<u>Personal Property</u>	<u>Other</u>	<u>Total</u>
Page 102 now reads:				
1976	2,582,519,443	377,827,671	124,014,239	3,084,316,353
Page 102 should read:				
1976	3,457,547,617	481,727,836	136,544,663	4,075,820,116

<u>Fiscal Period</u>	<u>Total Assessed Valuation</u>	<u>Net Debt</u>	<u>Ratic of Assessed Valuation to Net Debt</u>
Page 103 now reads:			
1976	3,084,316,353	303,945,395	10.15
Page 103 should read:			
1976	4,075,820,116	303,945,395	13.41

<u>Fiscal Year</u>	<u>Total Tax Levy</u>	<u>Collection Of Current Taxes</u>	<u>% Of Levy Collected</u>	<u>Collection Of Back Taxes</u>	<u>Total Collection Of Current And Back Taxes</u>	<u>% Of Current &amp; Back Taxes Collected To Tax Levy</u>
Page 107 now reads:						
1976	129,659,553	126,909,860	97.88	2,061,455	128,971,315	99.50
Page 107 should read:						
1976	159,862,198	156,662,655	97.99	2,875,041	159,537,696	99.79

## I. POPULATION

Note: All population estimates for Fairfax County apply to January of the year shown unless otherwise indicated.



SUMMARY OF ACTUAL AND PROJECTED POPULATION GROWTH

Fairfax County, 1900 to 1990

---

Year	Total Population	Average Annual Growth Rate For Preceding Period	Average Annual Population Increase For Preceding Period
1900	18,580	---	---
1910	20,536	1.0%	196
1920	21,943	0.7%	141
1930	25,264	1.5%	332
1940	40,929	6.2%	1,566
1950	98,557	14.1%	5,763
1960	248,897	15.2%	15,034
1970	454,275	8.2%	20,538
1980	644,100	4.2%	19,000
1985	707,900	2.0%	12,800
1990	780,800	2.1%	14,600

---

Sources: 1900-1970--U.S. Bureau of the Census  
1980-1990--Fairfax County Office of Research and Statistics and  
Office of Comprehensive Planning

CURRENT POPULATION ESTIMATES AND POPULATION DENSITY

BY SUPERVISOR DISTRICT, FAIRFAX COUNTY, JANUARY 1977

Supervisor District	Estimated Population	Persons Per Acre	Persons Per Square Mile
Centreville <sup>1</sup>	68,100	1.8	1,160
Dranesville <sup>2</sup>	73,500	1.8	1,170
Annandale	74,500	5.3	3,423
Lee <sup>3</sup>	66,700	3.2	2,049
Mason	67,000	8.2	5,246
Mt. Vernon <sup>4</sup>	69,100	2.6	1,647
Providence	73,000	6.4	4,114
Springfield <sup>5</sup>	75,700	1.0	619
TOTAL COUNTY <sup>6</sup>	567,600	2.4	1,531

Source: Fairfax County Office of Research and Statistics.

Notes: 1 Includes the town of Vienna.

2 Includes the town of Herndon.

3 Includes the part of Fort Belvoir in Lee District.

4 Includes Lorton and the part of Fort Belvoir in the Mount Vernon District.

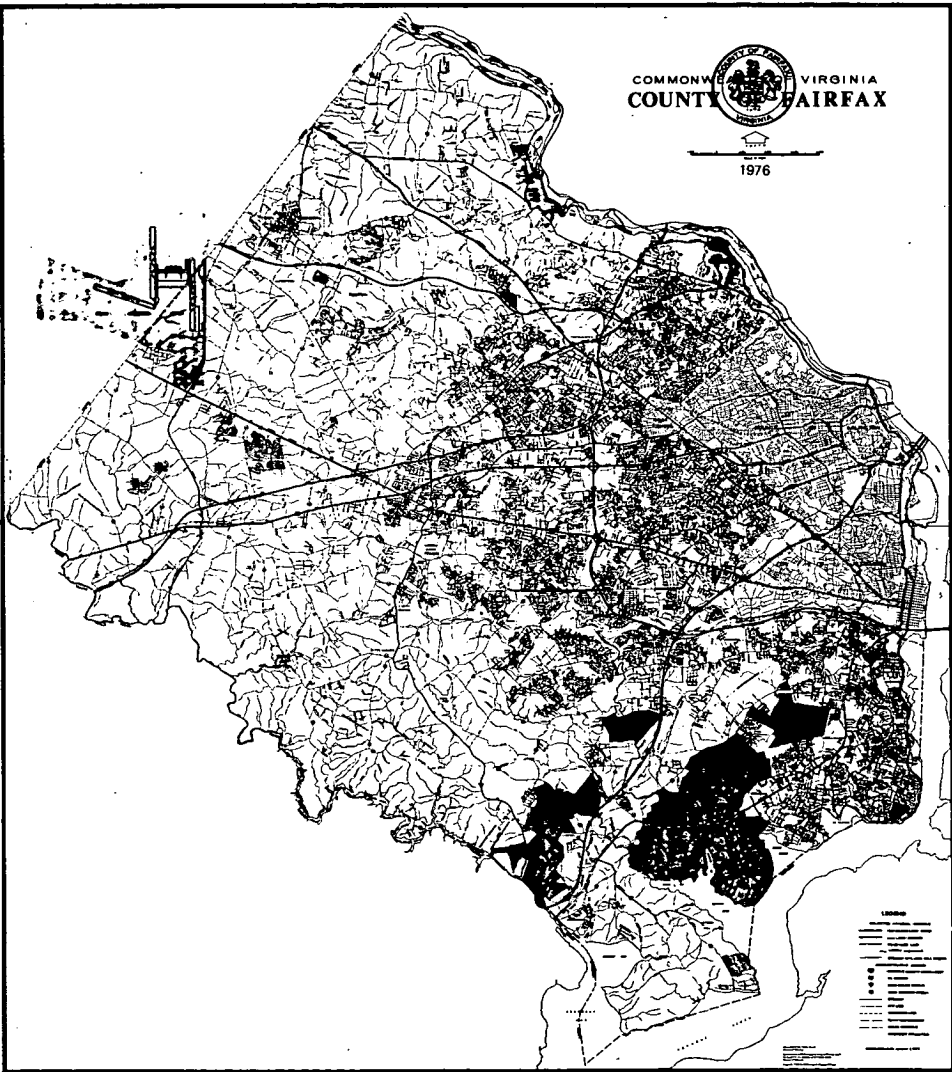
5 Includes the town of Clifton.

6 Excludes the cities of Fairfax and Falls Church.

COMMONWEALTH OF VIRGINIA  
COUNTY OF FAIRFAX



1976



- Legend symbols including:
  - Thick solid line: Major Road
  - Thin solid line: Local Road
  - Dashed line: Railroad
  - Thin solid line with cross-ticks: Waterway
  - Thin solid line with dots: Boundary
  - Thin solid line with long dashes: Airport
  - Thin solid line with short dashes: Canal
  - Thin solid line with diagonal dashes: Pipeline
  - Thin solid line with horizontal dashes: Sewer
  - Thin solid line with vertical dashes: Gas
  - Thin solid line with wavy dashes: Electric
  - Thin solid line with zig-zag: Telephone
  - Thin solid line with small squares: Utility
  - Thin solid line with large squares: School
  - Thin solid line with circles: Church
  - Thin solid line with triangles: Cemetery
  - Thin solid line with stars: Government
  - Thin solid line with diamonds: Post Office
  - Thin solid line with crosses: Fire Station
  - Thin solid line with squares: Police Station
  - Thin solid line with circles: Hospital
  - Thin solid line with triangles: School
  - Thin solid line with squares: Church
  - Thin solid line with circles: Cemetery
  - Thin solid line with stars: Government
  - Thin solid line with diamonds: Post Office
  - Thin solid line with crosses: Fire Station
  - Thin solid line with squares: Police Station
  - Thin solid line with circles: Hospital

AVERAGE ANNUAL POPULATION INCREASE BY JURISDICTION

1970 to 1990

(in thousands)

Jurisdiction	1970- 1980	1980- 1985	1985- 1990	Average 1970- 1990
Fairfax County	19.0	12.8	14.6	16.3
Alexandria City	1.4	2.5	2.2	1.9
Arlington County	-2.6	3.6	3.2	0.4
Fairfax City	---	0.1	---	---
Falls Church City	0.2	0.1	0.1	---
Loudoun County	2.4	2.5	3.0	2.6
Prince William County	6.8	3.9	3.8	5.3
Montgomery County	8.6	13.8	7.8	9.7
Prince George's County	5.7	18.9	24.3	13.6
District of Columbia	-2.7	4.1	4.2	0.8
TOTAL SMSA	38.8	62.3	63.2	50.8

Sources: Metropolitan Washington Council of Governments  
Fairfax County Office of Research and Statistics

AVERAGE ANNUAL POPULATION GROWTH RATE BY JURISDICTION

1970 to 1990

Jurisdiction	1970- 1980	1980- 1985	1985- 1990	1970- 1990
Fairfax County	4.2%	2.0%	2.1%	3.6%
Alexandria City	1.2	2.0	1.6	1.7
Arlington County	-1.5	2.4	2.0	0.2
Fairfax City	---	0.4	---	0.1
Falls Church City	2.0	0.8	0.7	1.5
Loudoun County	6.4	4.1	4.1	6.9
Prince William County	6.1	2.2	1.9	4.8
Montgomery County	1.6	2.3	1.1	1.8
Prince George's County	0.8	2.6	3.0	2.1
District of Columbia	-0.4	0.6	0.6	0.1
TOTAL SMSA	1.4	1.9	1.8	1.8

Sources: Metropolitan Washington Council of Governments  
Fairfax County Office of Research and Statistics

POPULATION GROWTH, 1900 to 1975<sup>1</sup>  
 Washington SMSA, Fairfax, Montgomery and Prince George's Counties

Jurisdiction	Total Population 1900	Total Population 1910	Change 1900-1910 # and %	Total Population 1920	Change 1910-1920 # and %	Total Population 1930	Change 1920-1930 # and %	Total Population 1940	Change 1930-1940 # and %
Washington SMSA	411,665	478,594	+ 66,929 + 16%	606,119	+127,525 + 2%	706,001	+ 99,882 + 17%	1,006,014	+300,013 + 43%
Fairfax County <sup>2</sup>	18,580	20,536	+ 1,956 + 11%	21,943	+ 1,407 + 7%	25,264	+ 3,321 + 15%	40,929	+ 15,665 + 62%
Montgomery County	30,451	32,089	+ 1,638 + 5%	34,921	+ 2,832 + 9%	49,206	+ 14,285 + 41%	83,192	+ 33,986 + 69%
Prince George's County	29,898	36,147	+ 6,249 + 21%	43,347	+ 7,200 + 20%	60,095	+ 16,748 + 39%	89,490	+ 29,395 + 49%

Jurisdiction	Total Population 1950	Change 1940-1950 # and %	Total Population 1960	Change 1950-1960 # and %	Total Population 1970	Change 1960-1970 # and %	Total Population 1975* # and %	Change 1970-1975 # and %
Washington SMSA	1,507,848	+501,834 + 50%	2,076,610	+568,762 + 38%	2,861,123	+784,513 + 38%	3,061,000	+199,877 + 7%
Fairfax County <sup>2</sup>	98,557	+ 57,628 + 141%	248,897	+150,340 + 153%	454,275	+205,378 + 83%	537,200**	+ 82,925 + 18%
Montgomery County	164,401	+ 81,209 + 98%	304,928	+140,527 + 85%	522,809	+217,881 + 71%	569,000	+ 46,191 + 9%
Prince George's County	194,182	+104,692 + 11%	357,395	+163,213 + 84%	660,567	+303,172 + 85%	642,600	- 17,967 - 3%

Source: U.S. Bureau of the Census, U.S. Census of Population; Volume II, General Population Characteristics for each of the individual state reports for Maryland and Virginia and for each of the specified years, 1900 through 1970.

\* Washington Center for Metropolitan Studies, Trends Alert, 1975.

\*\* Office of Research and Statistics estimate

- Notes: 1. All data are based on the 1970 definition of the Washington Metropolitan area.  
 2. Fairfax County figures exclude city of Falls Church starting in 1950 and exclude city of Fairfax starting in 1960.

POPULATION AGE DISTRIBUTION

FAIRFAX COUNTY, 1950--1975

Age Group	1950		1960		1970		1975 (est.)	
	Number	Percent	Number	Percent	Number	Percent	Number	Percent
Under 5	14,495	14.7	34,475	13.9	40,726	9.0	50,500	9.4
5 - 9	10,098	10.2	33,902	13.6	52,113	11.5	51,600	9.6
10 - 14	6,299	6.4	27,034	10.9	56,178	12.3	61,800	11.5
15 - 19	6,464	6.6	15,881	6.4	42,934	9.4	48,300	9.0
20 - 24	8,198	8.3	13,136	5.3	34,269	7.5	46,700	8.7
25 - 34	21,576	21.9	36,708	14.7	64,926	14.3	91,300	17.0
35 - 44	15,732	16.0	47,981	19.3	67,648	14.9	73,100	13.6
45 - 54	7,851	8.0	22,834	9.1	59,141	13.0	61,200	11.4
55 - 64	4,284	4.3	9,686	3.8	23,412	5.2	33,300	6.2
65 and Over	3,560	3.6	7,260	2.9	13,674	3.0	16,100	3.0
Not Reported	NA	NA	NA	NA	NA	NA	3,300	0.6
Median Age		26.8		25.0		25.2		26.1

Sources: U.S. Bureau of the Census, U.S. Census of Population 1950, 1960, 1970; General Population Characteristics, Virginia, PC(1)-B48. 1960 Census figures are corrected and do not include Fairfax City. Office of Research and Statistics estimate based on Washington Center for Metropolitan Studies percentage distributions.

CHANGES IN CHILD AND SCHOOL AGE GROUPS, 1960 to 1975

Washington SMSA, Fairfax, Montgomery, and Prince George's Counties

Age Group & Jurisdiction	1960		1970		1975	
	Number	Percent of Total	Number	Percent of Total	Number	Percent of Total
<u>Under 5 Age Group</u>						
Washington SMSA	246,276	12	255,218	9	243,200	8
Fairfax County	34,475	14	40,726	9	50,500	9
Montgomery County	42,299	12	43,074	8	41,000	7
Prince George's County	48,687	14	69,250	11	55,800	9
<u>5 to 14 Age Group</u>						
Washington SMSA	399,315	19	576,087	20	560,600	18
Fairfax County	60,936	24	108,291	24	113,400	21
Montgomery County	79,701	23	112,707	22	108,000	19
Prince George's County	77,187	22	142,278	22	115,500	18
<u>15 to 24 Age Group</u>						
Washington SMSA	285,921	14	524,359	18	593,500	19
Fairfax County	29,017	12	77,203	17	95,000	18
Montgomery County	36,496	11	84,387	16	101,700	18
Prince George's County	51,888	15	129,112	20	140,000	22

Source: U.S. Bureau of the Census, U.S. Census of Population: 1960 and 1970; General Population Characteristics, PC(1)-B. Washington Center for Metropolitan Studies, Trends Alert, 1975. Fairfax County estimates are based on Office of Research and Statistics total population estimates distributed according to Trends Alert percentage distribution.



CHANGES IN ADULT AGE GROUPS 1960--1970--1975

Washington SMSA, Fairfax, Montgomery and Prince George's Counties

Age Group & Jurisdiction	1960		1970		1975	
	Number	Percent of Total	Number	Percent of Total	Number	Percent of Total
<u>25-34 Age Group</u>						
Washington SMSA	301,560	15	438,050	15	516,000	17
Fairfax County	36,708	15	64,926	14	91,300	17
Montgomery County	45,128	13	69,402	13	81,300	14
Prince George's County	54,635	15	111,097	17	116,900	18
<u>35-44 Age Group</u>						
Washington SMSA	323,263	16	355,499	12	383,600	12
Fairfax County	47,981	19	67,648	15	73,100	14
Montgomery County	58,623	17	69,943	13	80,000	14
Prince George's County	55,028	15	79,252	12	80,300	12
<u>45-54 Age Group</u>						
Washington SMSA	240,956	12	330,198	12	322,500	10
Fairfax County	22,834	9	59,141	13	63,500	11
Montgomery County	39,669	12	69,331	13	73,700	13
Prince George's County	35,236	10	65,962	10	60,100	9
<u>55-64 Age Group</u>						
Washington SMSA	150,500	7	209,813	7	224,700	7
Fairfax County	9,686	4	23,412	5	33,300	6
Montgomery County	21,049	6	41,346	8	44,800	8
Prince George's County	19,757	6	36,947	6	36,800	6
<u>65 + Age Group</u>						
Washington SMSA	130,538	6	174,268	6	194,000	6
Fairfax County	7,260	3	13,674	3	16,100	3
Montgomery County	17,963	5	32,619	6	34,400	6
Prince George's County	14,977	4	26,669	4	31,900	5

Sources: U.S. Bureau of the Census, U.S. Census of Population: 1960 and 1970; General Population Characteristics, PC(1)-B.  
 Washington Center for Metropolitan Studies, Trends Alert, 1975.  
 Fairfax County estimates are based on Office of Research and Statistics total population estimates distributed according to Trends Alert percentage distributions.

POPULATION BY RACE, FAIRFAX COUNTY

1950--1960--1970--1975

Race	1950		1960		1970		1975	
	Number	Percent	Number	Percent	Number	Percent	Number	Percent
Caucasian	88,712	90.0	236,164	94.9	435,737	95.7	492,100	91.6
Negro	9,700	9.8	11,941	4.8	15,859	3.5	29,000	5.4
Other	145	0.2	792	0.3	3,425	0.8	8,100	1.5
Unknown	--	--	--	--	--	--	8,000	1.5

Sources: U.S. Bureau of the Census, U.S. Census of Population: 1950.  
Volume II: Characteristics of the Population, Part 46, Virginia,  
Chapter B.

U.S. Bureau of the Census, U.S. Census of Population: 1960.  
Washington, D.C.--Maryland--Virginia PHC(1)-166. (Data on all  
races adjusted to allow for initial overcount in Tract FAX-22).

U.S. Bureau of the Census, Census of Population: 1970. General  
Population Characteristics, Final Report PC(1)-B48, Virginia.

Washington Center for Metropolitan Studies, Trends Alert, 1975.

Fairfax County estimates are based on Office of Research and  
Statistics total population estimates distributed according to  
Trends Alert percentage distributions.

POPULATION 14 YEARS OF AGE AND OVER BY MARITAL STATUS

BY JURISDICTION, 1960--1970--1975

Marital Status and Jurisdiction	Percents		
	1960	1970	1975
<u>Now Married</u>			
Washington SMSA	62.8	58.9	55.7
Fairfax County	73.0	68.9	67.4
Montgomery County	72.3	64.8	61.6
Prince George's County	70.2	64.9	59.4
<u>Never Married</u>			
Washington SMSA	24.1	28.3	27.5
Fairfax County	20.8	24.3	22.9
Montgomery County	19.2	25.4	26.8
Prince George's County	21.0	25.4	25.5
<u>Widowed</u>			
Washington SMSA	7.0	6.0	5.5
Fairfax County	3.6	3.4	2.8
Montgomery County	5.6	5.6	5.1
Prince George's County	5.1	4.6	4.7
<u>Divorced</u>			
Washington SMSA	2.8	3.4	3.7
Fairfax County	1.5	2.0	2.5
Montgomery County	1.6	2.5	2.9
Prince George's County	1.9	2.7	3.5
<u>Separated</u>			
Washington SMSA	3.3	3.5	3.3
Fairfax County	1.2	1.4	1.5
Montgomery County	1.2	1.7	1.9
Prince George's County	1.8	2.5	2.7

Sources: U.S. Bureau of the Census, U.S. Census of Population: 1960 and 1970; General Population Characteristics, PC(1)-B.  
 Washington Center for Metropolitan Studies, Trends Alert, 1975.

COMPARISONS OF SELECTED DEMOGRAPHIC CHARACTERISTICS, 1970

FAIRFAX COUNTY, VIRGINIA, UNITED STATES, AND REGIONS

Demographic Characteristic	Fairfax County	Virginia	U.S.A.	North- East	North Central	South	West
<u>Education:</u>							
Median School Years	12.9	11.7	12.1	12.1	12.1	11.3	12.4
% High School Graduates	78.8	47.8	52.4	53.0	53.7	45.1	62.3
% College Graduates	30.3	12.3	10.7	11.2	9.6	9.8	13.2
<u>Employment:</u>							
% in Civilian Labor Force	56.6	54.7	56.7	57.7	58.2	54.8	56.6
White Collar	75.2	49.0	48.2	51.3	45.8	45.4	52.7
Blue Collar	17.2	36.2	35.9	35.6	37.2	37.7	31.1
Agriculture	0.2	2.7	3.1	1.0	4.4	3.7	3.1
Service	7.4	12.1	12.8	12.2	12.7	13.1	13.2
<u>Income:</u>							
Median Income	\$15,707	\$ 9,049	\$ 9,586	\$10,537	\$10,134	\$ 8,075	\$10,263
% Below Poverty	3.5	12.3	10.7	7.6	8.3	16.3	8.9
<u>% Earning:</u>							
Less than \$2,000	2.2	6.6	5.9	4.1	4.7	8.9	4.8
Less than \$5,000	6.2	22.0	20.3	15.6	17.3	27.9	17.9
Over \$25,000	14.6	4.7	4.6	5.8	4.4	3.4	5.3
<u>Per Capita Income</u>							
1973	\$ 6,488	\$ 4,886	\$ 5,041	\$ 5,435	\$ 5,263	\$ 4,447	\$ 5,225
1969	4,542	3,410	3,733	4,162	3,839	3,126	3,999
<u>Housing:</u>							
% Owner Occupied	62.0	62.0	62.9	57.6	68.0	64.7	59.0
Median Value	\$35,400	\$17,100	\$17,000	\$19,400	\$16,700	\$13,500	\$20,500
Median Number of Rooms	6.3	5.2	5.0	5.1	5.1	4.9	4.7
<u>% Over 1.01 Persons/ Room</u>							
	3.6	8.0	8.2	6.5	7.3	10.3	8.4
Median Rent	\$ 164	\$ 92	\$ 89	\$ 92	\$ 89	\$ 71	\$ 106

Sources: U.S. Bureau of the Census, 1970 Census of Population, General Social and Economic Characteristics, Virginia, PC(1)-C48, Characteristics of the Population, United States Summary, Volume I, Part I, Section 2, PC(1)-01. 1970 Census of Housing, General Housing Characteristics, Virginia, HC(1)-A48. General Housing Characteristics, United States Summary, HC(1)-A1. Survey of Current Business, August 1974.

Note: Regions of the United States are defined following standard Bureau of the Census definitions. For a detailed listing of states comprising each region, see Part 1, 1970 Census Users' Guide, page 77.

RESIDENT BIRTHS BY RATE PER 1,000 POPULATION

Fairfax County, Virginia, and United States, 1960 to 1975

---

Year	Rate Per 1,000 Population		
	Fairfax County	Virginia	United States
1960	26.2	24.0	23.8
1965	20.2	20.1	19.6
1966	19.5	18.7	18.5
1967	18.3	18.0	17.9
1968	17.8	17.5	17.6
1969	17.9	17.4	17.8
1970	17.2	18.5	18.2
1971	14.7	17.5	17.2
1972	12.7	15.8	15.6
1973	12.1	14.9	14.9
1974	12.4	14.5	15.0
1975	12.1	14.1	14.8

---

Source: Virginia Department of Health, Bureau of Vital Records and Health Statistics.

RESIDENT DEATHS BY RATE PER 1,000 POPULATION

Fairfax County, Virginia, and United States, 1960 to 1975

Year	Rate Per 1,000 Population		
	Fairfax County	State of Virginia	United States
1960	4.2	8.6	9.5
1965	4.1	8.4	9.4
1966	4.2	8.3	9.5
1967	4.2	8.1	9.4
1968	4.2	8.5	9.7
1969	4.0	8.2	9.5
1970	4.0	8.4	9.4
1971	3.8	8.4	9.3
1972	3.9	8.6	9.4
1973	3.7	8.5	9.4
1974	4.2	8.3	9.1
1975	3.9	8.0	9.0

Source: Virginia Department of Health, Bureau of Vital Records and Health Statistics.

PRIMARY CAUSE OF DEATH, FAIRFAX COUNTY, NORTHERN VIRGINIA AREA  
AND VIRGINIA, 1975

Cause of Death	Fairfax County	Northern Virginia	Virginia
Heart Disease	33.9%	34.4%	35.6%
Malignant Neoplasms	22.3	22.7	18.3
Cerebrovascular Disease	8.1	8.1	9.6
Accidents	7.0	6.6	6.1
Diseases of Early Infancy	1.9	1.9	1.6
Influenza and Pneumonia	2.7	2.5	3.2
Diabetes Mellitus	1.9	1.6	1.5
Cirrhosis of Liver	2.3	2.4	1.6
Bronchitis, Emphysema, and Asthma	1.3	1.4	1.1
Arteriosclerosis	1.5	1.6	1.4
Congenital Anomalies	1.3	1.4	0.7
Suicide	3.8	3.3	1.8
Homocide	1.2	1.1	1.4
Other	10.8	11.0	16.1
TOTAL	100.0%	100.0%	100.0%

Source: Virginia Department of Health, Bureau of Vital Records and Health Statistics.

MARRIAGES BY PLACE OF OCCURRENCE

Fairfax County and Virginia, 1967 to 1975

---

Year	<u>Fairfax County</u>		<u>Virginia</u>	
	Number	Annual Percent Change	Number	Annual Percent Change
1967	1,928	NA	48,653	NA
1968	2,059	+6.8	52,173	+7.2
1969	1,880	-8.7	52,575	+0.8
1970	1,983	+5.5	51,964	-1.2
1971	1,830	-7.7	52,158	+0.4
1972	1,971	+7.7	55,863	+7.1
1973	1,979	+0.4	58,431	+4.6
1974	2,149	+8.6	56,617	-3.1
1975	2,307	+7.4	54,400	-3.9

---

Source: Virginia Department of Health, Bureau of Vital Records and Health Statistics.



DIVORCES BY PLACE OF OCCURRENCE

Fairfax County and Virginia, 1967 to 1975

---

Year	<u>Fairfax County</u>		<u>Virginia</u>	
	Number	Annual Percent Change	Number	Annual Percent Change
1967	716	NA	9,682	NA
1968	804	+12.3	10,571	+ 9.2
1969	933	+16.0	11,417	+ 8.0
1970	1,019	+ 9.2	11,879	+ 4.0
1971	1,265	+24.1	13,261	+11.6
1972	1,397	+10.4	14,155	+ 6.7
1973	1,612	+15.4	16,078	+13.4
1974	1,818	+12.8	16,704	+ 3.9
1975	2,041	+12.3	19,311	+15.6

---

Source: Virginia Department of Health, Bureau of Vital Records and Health Statistics.

ESTIMATED NET IN-MIGRATION  
Fairfax County, 1960 to 1975

Year	Total Population Increase	Natural Increase	Estimated Net In-Migration	Percent Net In-migration of Total Increase
1960	9,900	5,500	4,400	44.4
1961	16,900	5,300	11,600	68.6
1962	16,700	5,100	11,600	69.5
1963	21,500	5,400	16,100	74.9
1964	15,600	5,800	9,800	62.8
1965	21,000	5,300	15,700	74.8
1966	28,600	5,400	23,200	81.1
1967	30,200	5,400	24,800	82.1
1968	23,200	5,600	17,600	75.9
1969	21,800	6,000	15,800	72.5
1970	16,300	6,000	10,300	63.2
1971	17,000	5,400	11,600	68.2
1972	18,100	4,500	13,600	75.1
1973	16,500	4,500	12,000	72.7
1974	15,000	4,200	10,800	72.0
1975	17,300	4,200	13,100	75.7

Note: Estimated Net Migration is total annual increase minus natural increase.

PROFILE OF GEOGRAPHIC MOBILITY OF HOUSEHOLD HEADS LIVING IN FAIRFAX COUNTY IN 1975

Mobility Status	Place of Residence in 1970	Place of Residence in 1975	Number of Households	Percent
Intra-County Mover	Fairfax County	Different House in County	25,100	15.2%
Intra-State Mover	Other Jurisdictions in Virginia	Fairfax County	20,400	12.3
Interstate Mover	Other State	Fairfax County	46,000	27.9
International Mover	Abroad	Fairfax County	8,600	5.2
Non-Mover	Fairfax County	Same House in County	61,600	37.2
Unknown	---	---	3,700	2.2
TOTALS			165,400	100.0%

Source: Washington Center for Metropolitan Studies, Trends Alert, 1975.

HOUSEHOLD RELATIONSHIPS BY JURISDICTION

1970 and 1975

---

Jurisdiction	Husband-Wife Headed Families		Other Headed Households	
	1970	1975	1970	1975
Fairfax County, Va.	82.9%	80.8%	17.1%	19.2%
District of Columbia	43.2	38.3	56.8	61.7
Montgomery Co., Md.	76.0	71.2	24.0	28.8
Prince George's Co., Md.	75.1	67.5	24.9	32.5
Alexandria City, Va.	56.7	52.3	43.3	47.7
Arlington Co., Va.	55.5	50.0	44.5	50.0
TOTAL SMSA	65.0	61.8	35.0	38.2

---

Sources: U. S. Bureau of the Census, Census of Population and Housing: 1970, Census Tracts, PHC(1)-226.  
Washington Center for Metropolitan Studies, unpublished tabulations from Trends Alert census updating program.

HOUSEHOLD SIZE BY JURISDICTION

1970 and 1975

Jurisdiction	Number in Household						Total
	1	2	3	4	5	6+	
	<u>1970</u>						
Fairfax County, Virginia	7.9%	24.1%	20.6%	22.3%	13.8%	11.3%	100.0%
Arlington County, Virginia	29.6	34.4	15.8	10.8	5.3	4.1	100.0
Alexandria City, Virginia	26.5	32.9	17.6	12.0	5.8	5.2	100.0
Montgomery County, Maryland	13.5	26.7	18.0	19.0	12.2	10.6	100.0
Prince George's County, Maryland	12.0	26.6	20.1	18.8	11.4	11.1	100.0
District of Columbia	32.1	26.6	14.5	10.6	6.8	9.4	100.0
Total SMSA	19.4	26.9	17.7	16.2	9.9	9.9	100.0
	<u>1975</u>						
Fairfax County, Virginia	9.5	26.6	21.9	22.1	11.7	8.2	100.0
Arlington County, Virginia	34.8	32.7	14.3	10.9	5.2	2.1	100.0
Alexandria City, Virginia	30.6	32.2	19.6	10.4	3.2	4.0	100.0
Montgomery County, Maryland	17.4	27.3	17.5	19.0	11.3	7.5	100.0
Prince George's County, Maryland	16.4	31.1	18.9	18.4	8.5	6.7	100.0
District of Columbia	34.1	25.8	15.2	11.0	6.7	7.2	100.0
Total SMSA	21.6%	27.9%	17.3%	17.2%	8.9%	7.1%	100.0%

Sources: U.S. Department of Commerce, Bureau of the Census, Census Tracts, PHC(1)-226.  
 Washington Center for Metropolitan Studies, unpublished tabulations from Trends Alert census updating program.

INCREASE IN ONE-PERSON HOUSEHOLDS AND  
THE NUMBER OF UNRELATED INDIVIDUALS  
FAIRFAX COUNTY, 1960--1970--1975

	<u>1960</u>	<u>1970</u>	<u>1975</u>
<u>Total Population</u>	248,897	454,275*	537,200
Number of Unrelated Individuals	11,707	23,811	NA
Percentage of Unrelated Individuals	4.7%	5.2%	NA
<u>Total Number of Households</u>	65,245	126,516	165,400
Number of One-Person Households	2,537	9,972	15,600
Percentage of One-Person Households	3.9%	7.9%	10.6%

Sources: U.S. Bureau of the Census, Census of Population and Housing: 1970; Census Tracts, Final Report, PHC(1)-226, Washington, D.C.-Maryland-Virginia SMSA.

U.S. Bureau of the Census, U.S. Census of Population: 1960; Detailed Characteristics, Virginia, Final Report, PC(1)-48D.

Washington Center for Metropolitan Studies, Trends Alert, 1975.

\* Revised by Bureau of the Census in 1975.

NA-Not Available.

## II. EDUCATION

YEARS OF SCHOOL COMPLETED FOR RESIDENTS AGE 25 YEARS AND OVER

FAIRFAX COUNTY, 1960--1970--1975

---

	1960	1970	1975 (est.)
Persons, 25 Years Old and Over	131,131	228,935	285,200
No School Years Completed	647	820	500
Elementary: 1 to 8 Years	22,552	21,693	14,200
High School: 1 to 3 Years	19,395	26,013	20,600
4 Years	39,670	71,955	74,500
College: 1 to 3 Years	21,227	39,161	52,700
4 Years	27,640	69,293	114,400
School Years Not Reported	--	--	4,800
Median School Years Completed	12.6	12.9	13.6
Percent High School Graduates	67.5	78.8	84.7

---

Sources: U.S. Bureau of the Census, U.S. Census of Population and Housing: 1960, 1970; Census Tracts, Washington, D.C.--Maryland--Virginia Standard Metropolitan Statistical Area.  
Washington Center for Metropolitan Studies, Trends Alert, 1975.



SCHOOL MEMBERSHIP

Fairfax County, 1968 to 1976

---

School Year	Public Schools	George Mason University	All Campuses Northern Virginia Community College
1968-1969	122,077	1,445	5,271
1969-1970	129,979	1,890	7,629
1970-1971	133,362	2,390	9,718
1971-1972	135,948	3,110	12,047
1972-1973	135,780	4,125	13,974
1973-1974	135,839	4,926	17,261
1974-1975	136,508	6,124	21,439
1975-1976	136,944	8,022	27,198
1976-1977	134,784	8,470	26,557

---

Sources: Fairfax County Public Schools, Office of Statistical Support.  
George Mason University, Office of the Registrar.  
Northern Virginia Community College, Office of Institutional  
Research.

PUBLIC SCHOOL MEMBERSHIP

Actual (1970-1976) and Projected (1977-1982)

	Head Start	K	1	2	3	4	5	6	7	8	9	10	11	12	Special Educa	Total
1970 (Actual)	194	8159	9341	10184	10175	10707	10689	10545	10937	10839	11149	10252	9676	9095	1420	133,362
1971 (Actual)	167	7843	8833	10129	10521	10415	11051	10978	11095	11090	11505	11067	9907	9584	1763	135,948
1972 (Actual)	174	7628	8261	9314	10412	10710	10501	11127	11514	11249	11688	11217	10409	9752	1824	135,780
1973 (Actual)	124	8155	8126	8885	9488	10521	10826	10692	11483	11400	11787	11561	10543	10145	2103	135,839
1974 (Actual)	113	8795	8880	8663	8987	9626	10619	10851	11078	11451	11893	11617	10938	10338	2659	136,508
1975 (Actual)	175	8707	9699	9151	8869	9490	9877	11021	11262	11335	12256	11675	10917	10635	1875	136,944
1976 (Actual)	175	7527	9484	9661	9160	9088	9466	9992	10964	11293	12014	11822	11280	10599	2259	134,784
1977 (Projected)	175	7527	8245	9779	9786	9465	9196	9638	10205	11053	11937	11750	11241	10999	2259	133,255
1978 (Projected)	175	7527	8245	8498	9903	10115	9584	9365	9848	10277	11690	11682	11179	10960	2259	131,307
1979 (Projected)	175	7527	8245	8498	8603	10234	10245	9768	9552	9918	10885	11437	11120	10906	2259	129,372
1980 (Projected)	175	7527	8245	8498	8603	8891	10364	10445	9955	9617	10509	10638	10885	10851	2259	127,462
1981 (Projected)	175	7527	8245	8498	8603	8891	9003	10566	10646	10017	10187	10272	10116	10622	2259	125,627
1982 (Projected)	175	7527	8245	8498	8603	8891	9003	9178	10777	10708	10626	9954	9768	9866	2259	124,078

Source: Fairfax County Public Schools, Office of Statistical Support.

\*Based on September 8, 1976, membership - all other years are September 30.

TOTAL NUMBER OF PUBLIC SCHOOLS BY YEAR AND LEVEL

FAIRFAX COUNTY, 1960--1975

<u>School Year</u>	<u>Elementary</u>	<u>Intermediate</u>	<u>Secondary</u>	<u>Special Education Centers</u>	<u>Total</u>
1960-1961	73	8	12		93
1961-1962	78	10	11		99
1962-1963	81	11	14		106
1963-1964	85	11	15		111
1964-1965	91	12	16		119
1965-1966	98	15	16		129
1966-1967	100	16	17		133
1967-1968	106	17	18		141
1968-1969	116	17	19		152
1969-1970	124	17	19		160
1970-1971	123	18	19		160
1971-1972	125	18	20		163
1972-1973	127	18	20		165
1973-1974	128	18	22		168
1974-1975	124	17	22	5	168
1975-1976	124	17	22	6	169

Source: Fairfax County Public Schools, Office of Statistical Support.

AVERAGE SALARY OF TEACHERS

Fairfax County, 1972 to 1975

School Year	Average Salary
1972 - 1973	\$12,288
1973 - 1974	\$12,973
1974 - 1975	\$13,854
1975 - 1976	\$15,227

Source: Fairfax County Public Schools, Office of Statistical Support, Annual School Report.

AVERAGE ANNUAL SALARY OF PUBLIC SCHOOL PERSONNEL

Fairfax County, 1975-1976

---

Classification	Average Salary
<b>Principal Positions:</b>	
Elementary Schools Only	\$ 24,050
Secondary Schools Only	\$ 31,008
Overall Average	\$ 29,443
<b>Assistant Principal Positions:</b>	
Elementary Schools Only	\$ 22,942
Secondary Schools Only	\$ 24,581
Overall Average	\$ 22,820
Instructional Supervisory Positions	\$ 23,890
Visiting Teacher Positions	\$ 15,571
Elementary Teaching Positions (K-7)	\$ 14,384
Secondary Teaching Positions (8-12)	\$ 16,369

---

Source: Fairfax County Public Schools, Annual School Report, 1975--1976.

PER PUPIL COST OF EDUCATION

Fairfax County, 1963 to 1975

---

<u>School Year</u>	<u>Operating Cost Per Pupil</u>
1963 - 1964	\$ 438
1964 - 1965	464
1965 - 1966	513
1966 - 1967	560
1967 - 1968	635
1968 - 1969	692
1969 - 1970	774
1970 - 1971	855
1971 - 1972	917
1972 - 1973	1,021
1973 - 1974	1,151
1974 - 1975	1,316
1975 - 1976	1,454

---

Source: Fairfax County Public Schools, Office  
of Statistical Support.

EDUCATION AND INCOME IN THE WASHINGTON, D.C.-MARYLAND-VIRGINIA  
STANDARD METROPOLITAN STATISTICAL AREA--  
1969 INCOME OF PERSONS 18 YEARS OLD AND OVER  
BY YEARS OF SCHOOL COMPLETED, RACE, AND SEX: 1970

	<u>Elementary School</u>			<u>High School</u>		<u>College</u>			<u>All School Years</u>
	<u>Less than 5 Years</u>	<u>5 to 7 Years</u>	<u>8 Years</u>	<u>1 to 3 Years</u>	<u>4 Years</u>	<u>1 to 3 Years</u>	<u>4 Years</u>	<u>5 Years or More</u>	
<u>Total With Income:</u>									
Male 18 and Over, Median Income	\$4,079	\$5,616	\$6,405	\$6,562	\$7,814	\$8,154	\$13,141	\$16,009	\$8,375
Female 18 and Over, Median Income	1,612	1,900	2,316	3,181	4,596	4,287	5,884	8,287	4,028
<u>Negro With Income:</u>									
Male 18 and Over, Median Income	3,877	5,014	5,279	5,445	6,315	6,522	8,789	11,418	5,841
Female 18 and Over, Median Income	1,533	1,924	2,403	3,126	4,623	5,286	7,488	9,540	3,753
<u>Persons of Spanish Language:</u>									
Male 18 and Over, Median Income	4,276	5,715	5,524	6,048	6,611	7,654	12,132	14,752	8,185
Female 18 and Over, Median Income	\$2,475	\$2,450	\$2,927	\$2,791	\$4,047	\$4,642	\$5,458	\$6,235	\$3,778

Source: U.S. Bureau of the Census, U.S. Census of Population: 1970; Detailed Characteristics; Final Report PC(1)-D48, Virginia.

Note: Income reported in the Census of 1970 reflects income earned in 1969.

III. EMPLOYMENT, LABOR FORCE, AND INDUSTRY



OCCUPATIONAL COMPOSITION OF FAIRFAX COUNTY RESIDENTS

1960--1975

Occupational Category	1960		1970		1975 (estimate)	
	Number	Percent	Number	Percent	Number	Percent
White Collar	51,853	65.0	123,070	75.2	160,600	76.6
Professional/Managerial	28,567	35.8	71,754	43.8	99,600	47.5
Clerical	17,015	21.3	38,121	23.3	45,700	21.8
Sales	6,271	7.9	15,195	8.1	15,300	7.3
Blue Collar	25,217	31.6	40,486	24.7	40,600	19.4
Craftsmen	11,466	14.4	15,841	9.7	23,000	11.0
Operatives	5,000	6.2	7,832	4.8	6,300	3.0
Laborers (except farm)	1,890	2.4	2,885	1.8	2,300	1.1
Farm	523	0.7	345	0.2	---	--
Service	4,547	5.7	12,088	7.4	8,200	3.9
Private Household	1,791	2.2	1,495	0.9	800	0.4
Not Reported	2,715	3.4	NA	NA	8,400	4.0
<b>TOTAL EMPLOYED</b>	<b>79,785</b>	<b>100.0</b>	<b>163,556</b>	<b>100.0</b>	<b>209,600</b>	<b>100.0</b>

Source: U.S. Bureau of the Census, U.S. Census of Population: 1960; General Social and Economic Characteristics, PC(1)-48C.

U.S. Bureau of the Census, U.S. Census of Population: 1970; General Social and Economic Characteristics, PC(1)-C48.

Estimates prepared by the Office of Research and Statistics, Fairfax County.

NONAGRICULTURAL WAGE AND SALARY EMPLOYMENT

Fairfax County, 1950-1975\*

	1950	1960	1970	1971	1972	1973	1974	1975
<b>NONAGRICULTURAL WAGE AND SALARY EMPLOYMENT</b>	<b>19,901</b>	<b>39,158</b>	<b>96,666</b>	<b>99,877</b>	<b>112,136</b>	<b>113,618</b>	<b>122,156</b>	<b>125,599</b>
<b>Manufacturing</b>	272	628	5,815	3,999	3,565	4,469	5,064	6,096
Durable Goods	206	514	2,991	3,067	2,539	3,206	3,625	4,444
Nondurable Goods	66	114	824	838	1,024	1,263	1,439	1,652
<b>Nonmanufacturing</b>	<b>16,112</b>	<b>29,888</b>	<b>78,686</b>	<b>82,540</b>	<b>95,134</b>	<b>109,149</b>	<b>117,092</b>	<b>119,503</b>
Mining	26	138	139	153	140	184	165	121
Contract Construction	1,181	3,773	7,684	7,488	9,251	11,658	11,943	9,286
Transportation and Public Utilities	633	312	1,616	2,400	3,900	4,491	4,624	4,496
Wholesale and Retail Trade	1,637	5,815	18,877	20,749	23,667	29,249	30,220	32,770
Finance, Insurance, and Real Estate Service	571	1,064	5,002	5,333	6,501	7,759	7,952	6,402
Government	1,912	10,145	15,356	16,019	19,353	23,259	27,714	28,581
Federal	9,931	8,474	29,646	30,052	31,349	31,711	33,715	37,302
State	NA	NA	12,798	11,888	11,872	11,260	11,979	14,034
Local	NA	NA	1,404	1,531	2,085	1,928	2,367	2,823
Local	NA	NA	15,444	16,613	17,392	18,163	19,369	20,445
All Other Nonmanufacturing	221	162	386	386	473	638	761	545
All Other Nonagricultural Employment	5,517	8,642	14,165	13,338	13,439	NA	NA	NA
	<u>PERCENT</u>							
<b>Manufacturing</b>	1.3	1.6	3.9	4.0	3.2	3.9	4.1	4.9
Durable Goods	1.0	1.3	3.1	3.1	2.3	2.8	3.0	3.6
Nondurable Goods	0.3	0.3	0.9	0.8	0.9	1.1	1.2	1.3*
<b>Nonmanufacturing</b>	<b>81.0</b>	<b>76.3</b>	<b>81.4</b>	<b>82.6</b>	<b>84.8</b>	<b>96.1</b>	<b>95.9</b>	<b>95.1</b>
Mining	0.1	0.4	0.1	0.1	0.1	0.2	0.1	0.1
Contract Construction	5.9	9.6	7.9	7.5	8.2	10.4	9.8	7.4
Transportation and Public Utilities	3.2	0.8	1.7	2.4	3.5	4.0	3.8	3.6
Wholesale and Retail Trade	8.2	14.9	19.5	20.8	21.1	25.7	24.7	26.1
Finance, Insurance, and Real Estate Service	2.9	2.7	5.2	5.3	5.8	6.8	6.5	5.1
Government	9.6	25.9	15.9	16.0	17.7	20.5	22.7	22.7
Federal	49.9	21.6	30.7	30.1	28.0	27.9	27.6	29.7
Federal	---	---	13.2	11.9	10.6	9.7	9.8	11.2
State	---	---	1.5	1.5	1.9	1.7	1.9	2.2
Local	---	---	16.0	16.6	15.5	16.0	15.9	16.3
All Other Nonmanufacturing	1.2	0.4	0.4	0.4	0.4	0.6	0.7	0.5
All Other Nonagricultural Employment	17.7	22.1	14.7	13.3	12.0	---	---	---

SOURCE: Manpower Research, Virginia Employment Commission

NA: Not Available

\* Data as of March of year shown.

DISTRIBUTION OF FEDERAL CIVILIAN EMPLOYMENT BY JURISDICTION

1973 and 1974

Jurisdiction	Federal Civilian Employment		Percent Change
	1973	1974	
Fairfax County, Virginia	13,107	14,412	10.0%
Arlington County, Virginia	37,514	36,140	-3.7
Alexandria City, Virginia	6,750	8,863	31.3
Prince William County, Virginia	1,966	2,024	3.0
Fairfax City, Virginia	422	438	3.8
Falls Church City, Virginia	520	568	9.2
Loudoun County, Virginia	1,230	1,313	6.8
Montgomery County, Maryland	36,796	40,045	8.8
Prince George's County, Maryland	22,288	23,011	3.2
Washington Metropolitan Area	316,017	328,725	4.0%

Source: U.S. Civil Service Commission, Federal Civilian Employment by Geographic Area, for years cited.

FEDERAL CIVILIAN EMPLOYMENT WITHIN FAIRFAX COUNTY BY AGENCY

1974

<u>Agency</u>	<u>Federal Civilian Employment</u>	<u>Percent of Total</u>
Legislative Branch	20	0.1%
Postal Service	3,674	25.5
Army	5,889	40.9
Navy	502	3.5
Air Force	109	0.8
Other Defense	440	3.0
Agriculture	13	0.1
Health, Education, and Welfare	11	0.1
Treasury	150	1.0
Interior	1,988	13.8
Transportation	646	4.5
Justice	22	0.2
Commerce	465	3.2
Veterans Administration	3	---
Government Services	468	3.2
Environmental Protection Agency	1	---
All Other	11	0.1
Total All Agencies	14,412	100.0%

Source: U.S. Civil Service Commission, Federal Civilian Employment by Geographic Area, December 31, 1974.

GOVERNMENT EMPLOYEES BY PLACE OF RESIDENCE  
IN THE WASHINGTON METROPOLITAN AREA, 1970

	<u>Federal</u>	<u>State</u>	<u>Local</u>	<u>Total Government</u>
District of Columbia	109,943	5,813	25,407	141,163
<u>Maryland Area</u>	124,964	13,997	40,843	179,804
Montgomery County	52,859	3,237	16,520	72,616
Rockville	3,361	201	1,956	5,518
Takoma Park	1,893	187	493	2,573
Prince George's County	72,105	10,760	24,323	107,188
Bowie	4,092	261	992	5,345
College Park	1,725	2,255	734	4,714
Greenbelt	2,246	694	969	3,909
<u>Virginia Area</u>	105,367	4,557	29,878	139,802
City of Alexandria	15,264	657	3,795	19,716
Arlington County	30,197	961	4,825	35,983
Fairfax City	1,830	179	1,194	3,203
Fairfax County	47,945	1,800	14,502	64,247
City of Falls Church	1,370	41	338	1,749
Loudoun County	2,043	224	1,298	3,565
Prince William County	6,718	695	3,927	11,340
<u>Washington SMSA</u>	340,274	24,367	96,123	460,764

Source: Metropolitan Washington Council of Governments  
Tabulations from U.S. Bureau of the Census, 4th  
Count Census of Population Tape, Table 67.

FEDERAL GOVERNMENT EMPLOYEES BY PLACE OF RESIDENCE  
AND RACE FOR METROPOLITAN WASHINGTON, 1970

	<u>Total Federal Employees</u>	<u>White</u>	<u>Black</u>	<u>Other Races</u>
District of Columbia	109,943	32,523	76,453	967
<u>Maryland Area</u>	124,964	109,467	14,030	1,467
Montgomery County	52,859	49,965	2,198	696
Rockville	3,361	3,125	173	63
Takoma Park	1,893	1,466	211	216
Prince George's County	72,105	59,502	11,832	771
Bowie	4,092	4,000	72	20
College Park	1,725	1,637	72	16
Greenbelt	2,246	2,214	22	10
<u>Virginia Area</u>	105,367	100,998	3,495	874
City of Alexandria	15,264	14,165	976	123
Arlington County	30,197	28,680	1,142	375
Fairfax City	1,830	1,810	14	6
Fairfax County	47,945	46,643	959	343
City of Falls Church	1,370	1,351	13	6
Loudoun County	2,043	1,935	87	21
Prince William County	6,718	6,414	304	0
<u>Washington SMSA</u>	340,274	242,988	93,978	3,308

Source: Metropolitan Washington Council of Governments  
 Tabulation from U.S. Bureau of the Census, 4th  
 Count Census of Population Tape, Table 67.

COMMUTING DATA FOR RESIDENT LABOR FORCE

FAIRFAX COUNTY, 1970

<u>Places of Work</u>	<u>White Resident Workers</u>	<u>Negro Resident Workers</u>	<u>Other Resident Workers</u>	<u>Total Resident Workers</u>
Washington Central Business District	15,098	196	84	15,378
Remainder of Washington, DC	29,433	571	220	30,224
Montgomery County, Maryland	5,676	56	21	5,753
Prince George's County, Maryland	4,071	77	20	4,168
Arlington County, Virginia	28,277	581	165	29,023
City of Alexandria, Virginia	13,296	331	83	13,710
Fairfax City, Virginia	5,006	150	12	5,168
City of Falls Church, Virginia	3,688	197	7	3,892
Fairfax County, Virginia	59,658	2,681	477	62,816
Loudoun County, Virginia	1,061	23	0	1,084
Prince William County, Virginia	1,044	38	0	1,082
Baltimore City, Maryland	105	7	0	112
Baltimore County, Maryland	145	0	0	145
Anne Arundel County, Maryland	327	36	0	363
Howard County, Maryland	32	0	0	32
Remainder of Baltimore SMSA	6	0	0	6
Fauquier County, Virginia	141	0	0	141
Charles County, Maryland	139	0	0	139
Stafford County, Virginia	30	0	0	30
Calvert County, Maryland	36	0	0	36
Elsewhere	2,855	71	23	2,949
Not Reported	<u>7,970</u>	<u>488</u>	<u>60</u>	<u>8,518</u>
All Workers--TOTAL	178,094	5,503	1,172	184,769

Source: U.S. Bureau of the Census, U.S. Census Population: 1970. Unpublished Tabulations.

PLACE OF RESIDENCE OF IN-COMMUTERS

FAIRFAX COUNTY, 1970

<u>Residence</u>	<u>Number</u>	<u>Percent</u>
Arlington County	5,414	22.2
Fauquier County	779	3.2
Loudoun County	1,797	7.4
Prince William County	6,931	28.4
Rappahannock County	111	0.5
Stafford County	674	2.8
Alexandria City	5,860	24.1
Fairfax City	1,976	8.1
Falls Church City	<u>795</u>	<u>3.3</u>
TOTAL	24,337	100.0

Source: U.S. Bureau of the Census, Census of Population: 1970  
(unpublished tabulations based on 15 percent sample).



EARNINGS OF WORKERS

COMMUTING INTO AND OUT OF FAIRFAX COUNTY, 1969

<u>Earnings of Workers</u>	<u>Commuters Into Fairfax County</u>		<u>Commuters Out Of Fairfax County</u>		<u>Living and Working Within Fairfax County</u>	
	<u>Number</u>	<u>Percent</u>	<u>Number</u>	<u>Percent</u>	<u>Number</u>	<u>Percent</u>
\$1,000	1,178	3.9	3,401	3.2	7,539	12.9
\$1,000-2,999	2,774	9.2	7,073	6.8	11,123	19.1
\$3,000-4,999	3,546	11.8	8,736	8.3	8,362	14.3
\$5,000-6,999	5,433	18.1	11,951	11.5	7,844	13.4
\$7,000-9,999	7,697	25.7	18,565	17.7	9,380	16.1
\$10,000-14,999	6,091	20.3	23,797	22.7	7,869	13.5
\$15,000-24,999	2,696	9.0	25,930	24.7	5,018	8.6
\$25,000 or More	586	2.0	5,373	5.1	1,242	2.1
Total	30,001	100.0	104,826	100.0	58,377	100.0
Median	\$7,800		\$10,600		\$5,600	

Source: 1970 U.S. Census of Population, Journey to Work, PC(2)-6D.

UNEMPLOYMENT RATES BY MONTH

Fairfax County, 1976

---

Month	Civilian Labor Force	Unemployment	Rate
January	206,630	10,548	5.1
February	206,281	10,059	4.9
March	207,995	10,040	4.8
April	207,701	9,354	4.5
May	209,986	9,269	4.4
June	213,781	10,401	4.9
July	215,484	10,080	4.7
August	213,859	9,658	4.5
September	210,459	9,342	4.4
October	210,575	9,153	4.3
November	210,799	8,877	4.2
December	210,658	8,213	3.9
AVERAGE	210,351	9,583	4.6

---

Source: Virginia Employment Commission, Special Monthly Report.

AVERAGE ANNUAL UNEMPLOYMENT RATES

1970 to 1976

---

Area	1970	1971	1972	1973	1974	1975	1976
Fairfax County	2.3	2.2	2.5	3.4	3.7	5.0	4.6
United States	4.9	5.9	5.6	4.9	5.6	8.5	7.7
State of Virginia	3.7	3.6	3.6	3.6	4.5	6.6	5.5
Northern Virginia	2.3	2.2	2.5	3.5	3.8	5.0	4.6

---

Source: Virginia Employment Commission, Labor Market Trends and Special Monthly Report.

PERCENT OF POPULATION IN LABOR FORCE, BY AGE AND SEX  
FAIRFAX COUNTY, 1960 AND 1970

Age	<u>Male</u>		<u>Female</u>	
	1960	1970	1960	1970
14-15	17.0	12.8	5.6	6.0
16-17	35.0	34.6	16.5	24.0
18-19	79.0	59.1	44.9	54.4
20-21	91.1	78.4	52.2	64.7
22-24	93.2	89.9	42.0	62.7
25-34	93.1	94.9	29.0	41.5
35-44	95.3	97.3	35.6	43.0
45-64	90.3	92.7	43.6	47.6
65+	33.3	30.2	8.6	8.9

Sources: U.S. Bureau of the Census, 1960 Census of Population, Detailed Characteristics, Series PC(1)-48D, Table 115.  
U.S. Bureau of the Census, 1970 Census of Population, General Social and Economic Characteristics, Series PC(1)-C48, Table 121.

WEEKS WORKED, BY AGE AND SEX

FAIRFAX COUNTY, 1969

	50-52	48-49	40-47	27-39	14-26	Less Than 14	Did Not Work In 1969
	<u>Percents</u>						
<u>Male</u>							
16-24	29.1	4.2	6.6	8.6	13.4	19.3	18.8
25-64	84.9	4.0	3.7	2.0	1.3	1.2	2.9
65+	22.5	2.3	5.0	2.3	3.8	5.8	58.3
TOTAL	69.8	4.0	4.4	3.5	4.2	5.6	8.5
<u>Female</u>							
16-24	19.4	3.2	6.2	8.1	12.2	17.7	33.2
25-39	21.6	2.2	5.8	6.5	6.9	7.2	49.8
40-59	29.7	2.4	5.7	5.6	4.3	5.8	46.5
60+	11.5	1.1	3.1	2.1	1.5	3.0	77.7
All Persons	23.1	2.4	5.6	6.1	6.7	8.6	47.5

Source: U. S. Bureau of the Census, 4th Count Housing Summary Tape, Tables 64 and 65.

MALES 16 YEARS OLD AND OVER IN THE EXPERIENCED LABOR FORCE

BY EARNINGS AND OCCUPATION, FAIRFAX COUNTY, 1970

<u>Earnings</u>	<u>Total Experienced Civilian Labor Force</u>	<u>Occupation</u>					
		<u>Professionals, Managers</u>	<u>Craftsmen</u>	<u>Operatives</u>	<u>Non-Farm Labor</u>	<u>Farm Management</u>	<u>Farm Labor</u>
No Earnings	938	161	98	120	104	18	5
\$1-999	4,290	385	329	522	671	24	16
1,000-1,999	3,405	625	436	520	303	15	21
2,000-2,999	2,363	560	285	397	272	9	18
3,000-3,999	2,459	569	374	315	305	11	6
4,000-4,999	2,660	699	543	405	199	9	5
5,000-5,999	3,388	933	812	530	232	10	16
6,000-6,999	4,347	1,090	1,196	503	224	6	11
7,000-7,999	5,774	1,564	1,562	600	243	0	5
8,000-8,999	6,618	2,142	1,853	684	129	0	4
9,000-9,999	5,863	2,144	1,707	469	76	6	6
10,000-14,999	25,419	14,218	5,153	923	90	26	17
15,000-24,999	28,233	23,277	1,173	132	33	4	0
25,000 & Over	7,072	6,093	160	35	15	15	0
Median Earnings	\$11,923	\$15,954	\$ 9,235	\$ 6,653	\$ 3,492	\$ 4,944	\$4,300

Sources: U.S. Bureau of the Census, U.S. Census of Population: 1970; General Social and Economic Characteristics, Final Report PC(1)-C48, Virginia.

U.S. Bureau of the Census, U.S. Census of Population: 1970; 4th Count Tape, Table 78. Prepared by Metropolitan Washington Council of Governments.

INDUSTRIAL GROWTH STATISTICAL SUMMARY

GRAND TOTALS, 1975

<u>Classification</u>	<u># OF Firms</u>	<u>% Of Total</u>	<u>Square Feet</u>	<u>% Of Total</u>	<u>Number Of Employees</u>	<u>% Of Total</u>
Research and Technical Manufacturing	232	24.1	4,458,247	34.3	15,397	41.5
National and International Trade and Professional Associations	52	5.4	905,330	7.0	2,169	5.8
Wholesale Distribution	204	21.2	3,027,639	23.3	4,145	11.2
Contract Construction	161	16.7	657,055	5.0	6,031	16.3
Other Manufacturing	133	13.8	1,400,761	10.8	2,788	7.5
Transportation Warehousing	39	4.1	1,366,358	10.5	1,448	3.9
Miscellaneous Industrial Services	139	14.3	666,323	5.1	3,897	10.5
Major Utility Installation	<u>4</u>	<u>0.4</u>	<u>527,060</u>	<u>4.0</u>	<u>1,218</u>	<u>3.3</u>
TOTALS	964	100.0	13,008,773	100.0	37,093	100.0

Source: Economic Development Authority, Fairfax County, Virginia.

Historical Trends:

Since 1964:

- The number of firms has increased from 104 to 964, an increase of 827% and an average of 72 new firms per year;
- The number of industrially employed increased from 9,495 to 37,093, an increase of 291% and an average of 2,300 new industrial jobs per year.

NUMBER OF INDUSTRIAL FIRMS LOCATED IN FAIRFAX COUNTY

BY YEARS AND INDUSTRIAL GROUP, 1964--1975

<u>Industry</u>	<u>Number of Firms by Year</u>											
	<u>1964</u>	<u>1965</u>	<u>1966</u>	<u>1967</u>	<u>1968</u>	<u>1969</u>	<u>1970</u>	<u>1971</u>	<u>1972</u>	<u>1973</u>	<u>1974</u>	<u>1975</u>
Research and Technical Manufacturing	32	43	45		74	107	135	181		222		232
National and International Trade and Professional Associations					-0-	-0-	2	4		40		52
Wholesale Distribution	27	32	40	NOT REPORTED	98	96	120	142	NOT REPORTED	195	NOT REPORTED	204
Contract Construction					51	79	119	133		141		161
Other Manufacturing	45	55	61	NOT REPORTED	74	55	73	83	NOT REPORTED	118	NOT REPORTED	133
Transportation Warehousing					8	26	22	24		37		39
Miscellaneous Industrial Services					-0-	9	34	48		91		139
Major Utility Installation	—	—	—		-0-	-0-	-0-	2		3		4
TOTAL	104	130	146		305	372	505	617		847		964

Source: Economic Development Authority, Fairfax County, Virginia

Note: Form was expanded in 1968 in order to adequately account for the number of new and diverse firms entering the County.



EMPLOYMENT TRENDS OF INDUSTRIAL LAND USING ACTIVITIES

IN FAIRFAX COUNTY, VIRGINIA 1963 THROUGH 1975

Number of Employees by Industry

Year	Research And Technical Manufacturing	National And International Trade And Professional Associations	Wholesale Distribution	Contract Construction	Other Manufacturing	Transportation And Warehousing	Other Industrial Services	Major Utility Installation	Grand Totals
1963	6,827		912		1,306				9,045
1964	7,065		966		1,361				9,392
1965	-	-	-	-	-Not Reported-	-	-	-	-
1966	7,367		1,425		2,922				11,714
1967	-	-	-	-	-Not Reported-	-	-	-	-
1968	10,837	-0-	3,164	2,275	2,655	258	-0-	20	19,209
1969	12,019	-0-	3,133	3,777	2,917	783	550	20	23,199
1970	12,040	37	3,603	4,611	2,464	1,048	819	36	24,658
1971	12,992	44	4,058	5,035	2,660	1,083	1,171	1,025	28,068
1972	-	-	-	-	-Not Reported-	-	-	-	-
1973	16,580	1,622	4,608	6,968	3,252	1,280	4,037	1,036	39,883
1974	-	-	-	-	-Not Reported-	-	-	-	-
1975	15,397	2,169	4,145	6,031	2,788	1,448	3,897	1,218	37,093

Source: Fairfax County Economic Development Authority, Fairfax, Virginia.

Note: Form was expanded in 1968 in order to adequately account for the number of new and diverse firms entering the County. The National and International Trade and Professional Associations category until 1970 and Other Industrial Services until 1969 were distributed through the closest functional categories.

For the years 1963--1967, those numbers listed under Wholesale Distribution were included in a category called Wholesale and Warehousing.

NUMBER OF BUSINESS ESTABLISHMENTS BY BUSINESS CLASSIFICATION

Fairfax County, 1970 to 1976

Business Classification	1970	1971	1972	1973	1974	1975	1976
Apparel	202	219	234	292	318	337	343
Automotive	456	505	530	582	599	622	620
Food	658	695	721	765	764	842	910
Furniture, Home Furnishings, and Equipment	243	291	312	348	405	466	543
General Merchandise	221	248	276	309	337	392	449
Lumber and Building Supplies	202	222	242	261	273	284	316
Fuel	46	48	44	51	48	50	49
Machinery, Equipment, and Supplies	106	135	158	188	214	258	304
Miscellaneous	1,318	1,493	1,675	1,833	1,955	2,179	2,367
Hotels, Motels, etc.	58	57	52	51	53	56	54
Other Miscellaneous and Unidentifiable	18	17	16	10	9	9	7
TOTALS	3,528	3,930	4,260	4,690	4,975	5,495	5,962

Source: Commonwealth of Virginia, Department of Taxation, Taxable Sales, for cited years.

TAXABLE SALES BY BUSINESS CLASSIFICATION

Fairfax County, 1975 and 1976

Business Class	Taxable Sales		Percent Change
	1975	1976	
Apparel	\$ 98,357,481	\$ 115,003,988	16.9%
Automotive	61,259,379	64,943,945	6.0
Food	451,867,956	496,666,952	9.9
Furniture and Home Furnishings	67,674,280	72,542,669	7.2
General Merchandise	314,572,165	348,901,875	10.9
Lumber and Building Supplies	127,085,794	158,783,998	24.9
Fuel	13,462,864	13,614,360	1.1
Machinery, Equipment, and Supplies	20,368,397	28,370,433	39.3
Miscellaneous	127,924,829	141,756,929	10.8
Hotels, Motels	14,388,241	21,075,723	46.5
Other	1,769,260	1,592,805	-10.0
TOTAL	\$1,298,730,646	\$1,463,253,677	12.3%

Source: Commonwealth of Virginia, Department of Taxation, Taxable Sales, for years cited.

TAXABLE SALES AND PER CAPITA TAXABLE SALES, FAIRFAX COUNTY

1971 to 1976

---

Year	Taxable Sales	Annual Percent Change	Total Population*	Per Capita Taxable Sales
1971	\$ 756,978,280	N/A	479,100	\$1,580
1972	849,088,695	12.2%	496,600	1,710
1973	1,032,017,257	21.5	514,000	2,008
1974	1,210,819,974	17.3	529,700	2,286
1975	1,298,730,646	7.3	545,800	2,379
1976	1,463,253,677	12.7	561,100	2,608

---

\* Total population estimate as of July for cited years.

---

Source: Commonwealth of Virginia, Department of Taxation, Taxable Sales, for cited years.  
Office of Research and Statistics.

RETAIL SALES PER CAPITA  
Fairfax County, 1970 to 1975

Year	Population	Retail Sales	Retail Sales Per Capita
1970	467,100	\$ 644,201,000	\$1,379
1971	479,500	688,223,000	1,435
1972	486,000	840,577,000	1,730
1973	506,300	1,062,976,000	2,099
1974	535,500	1,176,510,000	2,197
1975	543,200	1,317,183,000	2,425

Source: Sales Management, Survey of Buying Power, for years cited.

IV. INCOME

FAMILY INCOME  
FAIRFAX COUNTY, 1959--1969--1975

Income Level	1959		1969		1975 (estimate)	
	Number Of Families	Percent	Number Of Families	Percent	Number Of Families	Percent
Under \$4,000	6,194	10.0	5,103	4.5	1,200	0.8
\$4-4,999	3,679	5.9	2,005	1.8	1,000	0.7
\$5-7,999	17,311	27.9	9,410	8.2	5,100	3.5
\$8-9,999	11,484	18.5	8,873	7.8	6,200	4.3
\$10-14,999	17,462	28.0	28,580	25.1	21,600	14.9
\$15-24,999	5,006	8.1	43,399	38.0	47,400	32.8
\$25,000 And Over	1,005	1.6	16,712	14.6	45,900	31.7
Not Reported	--		--		16,400	11.3
All Families	62,141	100.0	114,082	100.0	144,800	100.0
Median	\$8,607		\$15,707		\$21,100	

Sources: U.S. Bureau of the Census, U.S. Census of Population: 1960; General Social and Economic Characteristics, Virginia. Final Report PC(1)48C.

U.S. Bureau of the Census, U.S. Census of Population: 1970; General Social and Economic Characteristics, Final Report PC(1)-C48, Virginia.

Washington Center for Metropolitan Studies, Trends Alert, 1975.

FAMILY INCOME DISTRIBUTION, 1959--1975

Washington SMSA, Fairfax, Montgomery, and Prince George's Counties

Income Level and Jurisdiction	1959		Number of Families 1969		1975	
	No.	%	No.	%	No.	%
<u>\$15,000 and Over</u>						
Washington SMSA	108,662	21.9	273,251	39.6	368,900	48.8
Fairfax County	15,227	25.8	60,111	52.7	93,300	64.4
Montgomery County	37,015	43.4	74,121	56.2	89,600	61.5
Prince George's County	12,861	14.7	56,173	34.4	76,000	45.6
<u>\$8,000--14,999</u>						
Washington SMSA	196,688	39.7	252,112	36.5	193,600	25.6
Fairfax County	28,237	47.9	37,453	32.8	27,800	19.2
Montgomery County	28,733	33.7	40,369	30.6	29,500	20.2
Prince George's County	44,026	50.3	72,075	44.1	53,800	32.3
<u>\$4,000--7,999</u>						
Washington SMSA	131,361	26.5	110,941	16.1	63,300	8.4
Fairfax County	10,966	18.6	11,410	10.0	6,100	4.2
Montgomery County	14,441	16.9	11,810	9.0	5,300	3.6
Prince George's County	23,627	27.0	25,332	15.5	13,300	8.0
<u>Under \$4,000</u>						
Washington SMSA	59,159	11.9	53,805	7.8	31,100	4.1
Fairfax County	4,534	7.7	5,103	4.5	1,200	0.8
Montgomery County	5,083	6.0	5,631	4.2	1,600	1.1
Prince George's County	6,939	8.0	9,820	6.0	4,700	2.8
<u>All Families</u>						
Washington SMSA	495,870	100.0	690,109	100.0	556,900	86.9*
Fairfax County	58,964	100.0	114,077	100.0	128,400	88.6*
Montgomery County	85,272	100.0	131,931	100.0	126,000	86.4*
Prince George's County	87,453	100.0	163,400	100.0	147,800	88.7*

Sources: U.S. Bureau of the Census, U.S. Census of Population: 1960 and 1970; General Social and Economic Characteristics, PC(1)-C.  
 Washington Center for Metropolitan Studies, Population Factors Influencing Growth in Prince George's County, July 1973, p. 40.  
 Washington Center for Metropolitan Studies, Trends Alert, 1975.

Notes: 1. 1959--1969 incomes adjusted to 1969 dollar levels.  
 2. 1975 estimates of income rounded to nearest hundred and not adjusted for inflation.

\* Total number of families shown for 1975 excludes "not reported" category.



PER CAPITA PERSONAL INCOME<sup>1</sup> BY AREA

1929 to 1974

Year	Fairfax County	Northern Virginia	Washington SMSA	State of Virginia
1929	\$ 448*	\$ 593	\$1,085	\$ 434
1940	517*	733	1,031	457
1950	1,837	1,939	2,054	1,199
1959	2,428*	2,702	2,828	1,809
1962	2,739	2,971	3,091	2,044
1965	3,567*	3,600	3,578	2,467
1966	3,869*	3,855	3,773	2,665
1967	4,114*	4,090	3,971	2,880
1968	4,422*	4,387	4,322	3,156
1969	4,513	4,594	4,622	3,419
1970	4,859	5,044	5,024	3,712
1971	5,343	5,538	5,415	4,001
1972	5,787	6,062	5,899	4,400
1973	6,576	6,681	6,494	4,874
1974	7,150	7,244	7,102	5,333

\* Includes Fairfax County, Falls Church City, and Fairfax City

<sup>1</sup> Personal Income includes wage and salary disbursements, proprietors' income, rental income, dividends, interest, transfer payments, net value of food and fuel produced and consumed on farms, net rental value of owner-occupied houses, and wages and salaries paid in kind.

Source: Tayloe Murphy Institute, Personal Income Estimates for Virginia Cities and Counties, Selected Years, 1929 to 1974.

PER CAPITA PERSONAL INCOME<sup>1</sup> BY JURISDICTION

1970 to 1974

Jurisdiction	Year				
	1970	1971	1972	1973	1974
Fairfax County	\$4,859	\$5,343	\$5,787	\$ 6,576	\$ 7,150
Arlington County	6,370	7,038	7,629	8,444	9,257
Alexandria City	5,262	5,779	6,362	6,854	7,543
Fairfax City	5,226	5,643	6,418	7,526	8,077
Falls Church City	8,331	9,018	9,763	10,625	11,014
Loudoun County	3,864	4,351	4,832	5,367	5,622
Prince William County	3,549	3,927	4,451	4,799	5,216

Source: Tayloe Murphy Institute, Personal Income Estimates for Virginia Cities and Counties, Selected Years, 1929 to 1974.

Note: 1 Personal Income includes wage and salary disbursements, proprietors' income, rental income, dividends, interest, transfer payments, net value of food and fuel produced and consumed on farms, net rental value of owner-occupied houses, and wages and salaries paid in kind.

ADJUSTED GROSS INCOME ON ALL TAX RETURNS BY JURISDICTION

Tax Year 1975

---

Jurisdiction	Total Returns*	Median AGI Per Return	Average AGI Per Return
Fairfax County	191,542	\$15,283	\$18,071
Arlington County	79,675	12,187	15,781
Alexandria City	52,150	11,540	14,700
Fairfax City	7,338	13,523	16,454
Falls Church City	8,092	11,585	15,281
Loudoun County	18,279	13,155	15,809
Prince William County	37,594	14,754	15,431
Manassas City	3,878	11,508	13,742
Manassas Park City	1,434	12,009	11,910

---

\* Number of returns adjusted by counting two married separate returns as equivalent to one married joint or combined return.

---

Source: Tayloe Murphy Institute, Graduate School of Business Administration, University of Virginia.

ADJUSTED GROSS INCOME ON INDIVIDUAL TAX RETURNS BY JURISDICTION

Tax Year 1975

Jurisdiction	Individual Returns	AGI Per Return	Average AGI Per Return
Fairfax County	80,630	\$5,173	\$ 7,422
Arlington County	46,687	8,696	10,130
Alexandria City	31,326	8,436	9,627
Fairfax City	3,184	5,373	7,050
Falls Church City	1,085	3,896	5,662
Loudoun County	6,467	5,071	7,107
Prince William County	11,813	4,586	6,323
Manassas City	1,615	4,860	6,174
Manassas Park City	457	4,012	5,000

Source: Tayloe Murphy Institute, Graduate School of Business Administration,  
University of Virginia

ADJUSTED GROSS INCOME ON MARRIED TAX RETURNS BY JURISDICTION

Tax Year 1975

---

Jurisdiction	Married Returns*	Median AGI Per Return	Average AGI Per Return
Fairfax County	110,912	\$23,875	\$25,813
Arlington County	32,988	19,936	23,778
Alexandria City	20,824	18,613	22,331
Fairfax City	4,154	21,348	23,663
Falls Church City	3,809	19,374	22,859
Loudoun County	11,812	18,418	20,573
Prince William County	25,781	18,608	19,604
Manassas City	2,263	17,052	19,143
Manassas Park City	977	15,285	15,141

---

\* Number of returns adjusted by counting two married separate returns as equivalent to one married joint or combined return.

Source: Tayloe Murphy Institute, Graduate School of Business Administration  
University of Virginia.

ESTIMATED WEIGHTED AVERAGE THRESHOLDS AT THE POVERTY LEVEL IN 1975 BY SIZE  
OF FAMILY AND SEX OF HEAD, BY FARM-NONFARM RESIDENCE

Size of Family	Total	Nonfarm			Farm		
		Total	Male Head	Female Head	Total	Male Head	Female Head
1 person (unrelated individual)..	\$2,710	\$2,720	\$2,850	\$2,630	\$2,280	\$2,360	\$2,210
Under 65 years.....	2,790	2,800	2,900	2,680	2,400	2,460	2,280
65 years and over.....	2,570	2,580	2,610	2,570	2,200	2,220	2,190
2 persons.....	3,480	3,500	3,510	3,460	2,950	2,960	2,870
Head under 65 years.....	3,600	3,620	3,630	3,530	3,080	3,080	2,950
Head 65 years and over.....	3,230	3,260	3,260	3,240	2,770	2,770	2,770
3 persons.....	4,270	4,300	4,320	4,170	3,640	3,650	3,420
4 persons.....	5,470	5,500	5,500	5,470	4,700	4,700	4,650
5 persons.....	6,450	6,490	6,500	6,420	5,520	5,520	5,540
6 persons.....	7,260	7,310	7,320	7,250	6,220	6,220	6,220
7 or more persons.....	8,910	9,010	9,040	8,820	7,660	7,660	7,710

Source: U.S. Department of Commerce, Bureau of the Census

TYPE OF INCOME IN 1969 FOR FAMILIES WITH

INCOMES BELOW THE POVERTY LEVEL

Washington, DC-Maryland-Virginia, SMSA, 1970

<u>Percent of Aggregate Family Income:</u>	<u>All Families</u>	<u>Families with Male Head</u>	<u>Families with Female Head</u>
Total Aggregate Income	100.0	100.0	100.0
Earnings	67.1	77.8	52.4
Social Security	11.8	12.0	11.6
Public Assistance Income	13.7	3.7	27.5
Other Income	7.4	6.5	8.5

Percent of Families  
Receiving Income of  
Specified Type:

Earnings	63.0	72.2	52.9
Social Security	19.0	21.2	16.7
Public Assistance Income	17.2	6.9	28.6
Other Income	16.9	18.4	15.3

Source: U.S. Bureau of the Census, U.S. Census of Population: 1970; Detailed Characteristics, Final Report PC(1)-D48, Virginia.

Note: Low-income classification of families is based on the Department of Agriculture's Economy Food Plan and reflects the different consumption requirements of families based on their size, composition, sex, and age of the family head, and farm-nonfarm residence. The low-income level for families of three or more persons is established at three times the cost of the economy food plan.

INCOME AND POVERTY STATUS, FAIRFAX COUNTY, 1970

All Families with 1969 Incomes less than Poverty Level . . . . .	4,000
Percent of all Families. . . . .	3.5%
Mean Poverty Level Family Income . . . . .	\$1,608
Percent Receiving Public Assistance Income . . . . .	5.2%
Mean Size of Poverty Level Families. . . . .	3.88
Poverty Level Families with Female Head. . . . .	1,654
Percent Poverty Level Families with Female Head. . . . .	41.4%
All Persons with 1969 Incomes less than Poverty Level. . . . .	18,619
Percent of all Persons . . . . .	4.2%
Percent of Poverty Level Persons Age 65 and Over . . . . .	7.7%
Negro Families with 1969 Incomes less than Poverty Level . . . . .	429
Percent of all Negro Families. . . . .	14.9%
Mean Poverty Level Negro Family Income . . . . .	\$2,505
Percent Receiving Public Assistance. . . . .	11.4%
Poverty Level Negro Families with Female Head. . . . .	177
Percent Poverty Level Negro Families with Female Head. . . . .	41.3%
Families of Spanish Language with 1969 Incomes less than Poverty Level. . . . .	133
Percent of all Spanish Language Families . . . . .	5.2%
Mean Poverty Level Income for Spanish Language Families. . . . .	\$2,207
Percent Receiving Public Assistance. . . . .	--
Poverty Level Spanish Language Families with Female Head . . . . .	27
Percent Poverty Level Spanish Language Families with Female Head . . . . .	20.3%

Source: U.S. Bureau of the Census, Census of Population: 1970; General Social and Economic Characteristics, Final Report PC(1)-C48, Virginia.



COMPARISON OF MINORITY INCOMES TO ALL COUNTY INCOMES

FAIRFAX COUNTY, 1950-1960-1970

	<u>1950</u>	<u>1960</u>	<u>Percent of Change 1950-1960</u>	<u>1970</u>	<u>Percent of Change 1960-1970</u>
<b>A. <u>Median Family Income</u></b>					
All	\$4,199	\$8,607	105%	\$15,707	82%
Negro	N/A	\$4,045		8,004	98%
Percent of All	N/A	47.0%		51.0%	
Spanish Speaking	N/A	N/A		\$15,074	
Percent of All	N/A	N/A		96.0%	
<b>B. <u>Median Family and Unrelated Individual Income</u></b>					
All	\$3,446	\$7,796	126%	\$13,820	77%
Negro	\$1,481	\$2,808	90%	\$ 5,832	108%
Percent of All	42.9%	36.0%		42.2%	
Spanish Speaking	N/A	N/A		\$12,685	
Percent of All	N/A	N/A		91.8%	

Sources: U.S. Bureau of the Census, U.S. Census of Population: 1950. Vol. II: Characteristics of the Population, Part 46, Virginia, Chapter B.

U.S. Bureau of the Census, U.S. Census of Population: 1960; General Social and Economic Characteristics, Virginia, Final Report PC(1)-48C.

U.S. Bureau of the Census, Census of Population: 1970; General Social and Economic Characteristics, Final Report PC(1)-C48, Virginia.

MINORITY FAMILY INCOMES, FAIRFAX COUNTY, 1959-1969

	Number of Non-White		Number of Negro		Number of Spanish Speaking	
	Families	Percent	Families	Percent	Families	Percent
All Families	1,831	100	2,874	100	2,546	100
Under \$1,000	130	7	101	4	37	1
1,000-1,999	133	7	90	3	21	1
2,000-2,999	276	15	55	2	43	2
3,000-3,999	364	20	217	8	27	1
4,000-4,999	278	15	256	9	48	2
5,000-5,999	178	10	246	9	109	4
6,000-6,999	133	7	245	9	47	2
7,000-7,999	64	3	226	8	96	4
8,000-8,999	63	3	237	8	133	5
9,000-9,999	53	3	112	4	73	3
10,000 and over	159	9	1,089	38	1,912	75
Not Reported						
Median Mean	\$4,045		\$8,004		\$15,074	
Median Family & Unrelated Individual Income	\$2,808		\$5,832		\$12,685	

Source: U.S. Bureau of the Census, U.S. Census of Population: 1960. General Social and Economic Characteristics, Virginia, Final Report PC(1)-48C.

U.S. Bureau of the Census, Census of Population and Housing: 1970, Census Tracts, Final Report PHC(1)-226, Washington, DC-Maryland-Virginia SMSA.

Note: Incomes reported in 1960 and 1970 Census reflect 1959, 1969 actual incomes.

PARTICIPATION IN FOOD STAMP PROGRAM BY JURISDICTION

September 1976

Jurisdiction	Households	Persons
Fairfax County*	2,194	6,523
Arlington County	1,153	2,996
Loudoun County	366	1,151
Prince William County	797	3,254
Alexandria City	1,856	5,262
State of Virginia	72,142	233,298
<u>*Includes Fairfax City</u>		

Source: Virginia Department of Welfare, Public Welfare Statistics, September 1976.

EFFECTIVE BUYING INCOME CHARACTERISTICS

Fairfax County, 1960 to 1975

Year	Population	Per Household Effective Buying Income	Per Capita Effective Buying Income
1960	248,897	\$ 9,194	\$2,512
1965	329,455	12,155	2,982
1966	350,469	12,447	3,081
1967	379,055	14,334	3,650
1968	409,267	15,234	3,928
1969	432,482	14,761	3,844
1970	454,275	15,740	4,384
1971	486,000	16,840	4,702
1972	502,000	18,293	5,292
1973	523,000	20,130	5,920
1974	535,500	20,812	6,587
1975	543,200	22,321	7,283

Source: Sales Management, The Marketing Magazine. Survey of Buying Power for the indicated years.

Note: Effective Buying Income is personal income (wages, salaries, interest, dividends, profits, and property income) minus federal, state, and local taxes. Generally, it is equivalent to "disposable personal income."

CONSUMER PRICE INDEX, U.S. CITY AVERAGE

AND WASHINGTON, SMSA AVERAGE

1963 to 1976

(1967=100)

Year	Consumer Price Index	
	U.S. City	Washington SMSA
1963	91.7	91.3
1964	92.9	92.8
1965	94.5	94.1
1966	97.2	97.3
1967	100.0	100.0
1968	104.2	104.7
1969	109.8	111.2
1970	116.3	117.6
1971	121.2	122.3
1972	125.3	126.9
1973	133.1	135.0
1974	147.7	150.0
1975	161.2	161.6
1976	170.5	171.2

Source: The Consumer Price Index, Bureau of Labor Statistics,  
U.S. Department of Labor, Washington, D.C.

RELATIVE PRICE LEVEL INDICES FOR CATEGORIES OF EXPENDITURES

FOR EIGHT VIRGINIA METROPOLITAN AREAS: AUGUST 1975

(Average for All Areas = 100)

	Northern Virginia	Charlottesville	Lynchburg	Newport News Hampton	Norfolk Virginia Beach Portsmouth	Petersburg Colonial Heights Hopewell	Richmond	Roanoke
Total Index	116	103	94	98	101	95	101	93
Housing	136	105	85	94	103	91	103	83
Apparel	108	100	95	100	96	87	100	105
Personal Care	109	96	98	113	103	93	96	91
Transportation	99	103	97	103	103	99	100	97
Recreation	111	102	96	106	98	91	100	96
Medical Care	118	98	93	98	103	97	98	96
Food	101	103	104	96	100	100	98	98

Source: Tayloe Murphy Institute, Cost of Living in Virginia Metropolitan Areas, 1975, January 1976.

ESTIMATES OF URBAN FAMILY BUDGETS, WASHINGTON SMSA, 1976

Consumption Components	Budget Levels		
	Lower	Intermediate	Higher
Total Budget	\$10,650	\$16,950	\$24,769
Family Consumption	8,472	12,647	17,345
Total Food	3,032	3,949	4,975
Food at Home	2,586	3,298	3,946
Food Away from Home	446	651	1,029
Total Housing	2,288	4,045	5,982
Shelter	1,796	3,174	4,188
Renter	1,796	2,148	3,102
Homeowner	NA	3,516	4,380
Furnishings & Operations	492	871	1,598
Total Transportation	736	1,401	1,832
Automobile Owners	1,012	1,454	1,832
Clothing	726	1,037	1,551
Personal Care	251	353	523
Medical Care	932	936	974
Other Family Consumption	507	926	1,508
Other Items	460	741	1,249
Social Security and			
Disability Payments	622	895	895
Personal Income Taxes	1,096	2,667	5,280

Note: Budget levels represent the costs of three hypothetical lists of goods and services that were specified to portray three relative standards of living--described as lower, intermediate, and higher--and do not represent how families actually do or should spend their money.

Source: U.S. Department of Labor, Bureau of Labor Statistics, News Release, April 27, 1977, "Urban Family Budgets and Comparative Indexes for Selected Urban Areas, Autumn 1976."

INDEXES OF COMPARATIVE COSTS BY BUDGET LEVEL OF THE WASHINGTON SMSA  
AND THE NATION AS A WHOLE, 1976

Consumption Components	Budget Levels		
	Lower	Intermediate	Higher
Total Budget	106	104	104
Total Consumption	104	102	102
Total Food	101	102	102
Food at Home	100	102	102
Total Housing	116	105	103
Renter	122	113	103
Homeowner	NA	105	104
Total Transportation	96	100	100
Automobile Owners	98	99	NA
Clothing	91	91	93
Personal Care	95	99	104
Medical Care	104	104	104
Other Family Consumption	108	107	105
Personal Income Taxes	133	119	116

Note: An index of 100 represents the U.S. urban average at each budget level. Deviation from this average denotes the difference in Washington area budget levels--either higher or lower--from the national average. For example, an index of 105 denotes that the cost for an item in the Washington SMSA is five percent higher than the national average, while an index of 95 denotes a budget level that is five percent lower than the national average.

Source: U.S. Department of Labor, Bureau of Labor Statistics, News Release, April 27, 1977, "Urban Family Budgets and Comparative Indexes for Selected Urban Areas, Autumn 1976."



V. HOUSING

DWELLING UNIT INVENTORY<sup>1</sup> BY SUPERVISOR DISTRICT

Fairfax County, 1977

District	Housing Type								Total Units
	Single Family	Duplex	Townhouse	Multi-plex	Garden Apartments	Mid-rise Apartments	Hi-rise Apartments	Mobile Homes	
Centreville <sup>2</sup>	12,987	3	3,938	37	5,045	639	61	--	22,710
Dranesville <sup>3</sup>	17,133	17	1,977	200	3,553	409	83	--	23,372
Annandale	15,701	52	2,988	256	3,604	1,134	219	250	24,204
Lee	11,165	548	1,788	1,180	5,354	--	--	971	21,006
Mason	11,403	--	1,195	--	7,443	932	3,125	--	24,098
Mt. Vernon	12,227	1,099	332	149	3,967	--	2,523	709	21,006
Providence	12,087	4	2,578	161	9,325	150	1,037	--	25,342
Springfield <sup>4</sup>	16,485	--	3,952	979	2,215	--	--	510	24,141
TOTAL <sup>5</sup>	109,188	1,723	18,748	2,962	40,506	3,264	7,048	2,440	185,879

Source: Fairfax County Office of Research and Statistics, Standard Reports, 1977.

Notes: 1 Figures exclude group quarters which is composed of Lorton Reformatory, Fort Belvoir, Nursing Homes, and Religious Quarters.

2 Includes the town of Vienna.

3 Includes the town of Herndon.

4 Includes the town of Clifton.

5 Excludes the cities of Fairfax and Falls Church.

HOUSING CHARACTERISTICS, FAIRFAX COUNTY, 1950, 1960, 1970

	1950		1960		Percent of Change 1950-1960	1970		Percent of Change 1960-1970
	Number	Percent	Number	Percent		Number	Percent	
<u>All Dwelling Units</u>	26,558		69,184		161	130,787		89
<u>All Occupied Units</u>	24,317	100.0	65,245	100.0	168	126,516	100.0	94
Owner Occupied	15,791	64.9	49,933	76.5	216	81,532	64.4	63
Renter Occupied	8,526	35.1	15,312	23.5	80	44,984	35.6	194
<u>Type of Structure</u>								
1-Family Detached	19,011	71.6	57,823	83.6		95,866	73.3	58
1-Family Attached	73	0.3	2,972	4.3				
1 & 2 Family Semidetached	1,112	4.2	--	--				
2-Family	812	3.1	554	.8		1,320	1.0	138
3-4 Family	1,048	3.9	686	1.0		1,405	1.1	105
5 or More	3,534	13.3	5,708	8.3	62	30,482	23.3	434
Trailers	968	3.6	1,438	2.1	49	1,695	1.3	18
All Year-Round Units	26,558	100.0	69,181	100.0	161	130,768	100.0	89
<u>Number of Persons</u>								
1-Person Household	905	3.7	2,537	3.9	180	9,972	7.9	293
2-Person Household	5,670	23.3	12,343	18.9	118	30,624	24.2	148
3-Person Household	5,988	24.6	13,091	20.1	119	25,915	20.5	98
4-Person Household	5,904	24.3	16,703	25.6	183	28,279	22.4	69
5-Person Household	3,043	12.5	11,137	17.1	266	17,401	13.8	56
6-Person Household	1,403	5.8	5,468	8.4	290	8,454	6.7	55
7-Person Household	657	2.7	2,235	3.4	240	3,889	3.1	74
8 or More	747	3.1	1,731	2.7	132	1,982	1.6	15
<u>Median Number of Persons</u>								
All Occupied Units	3.4	--				3.4		
Owner-Occupied	3.5	--	3.8			3.7		
Renter-Occupied	3.4	--	3.6			2.7		

Sources: U.S. Bureau of the Census, U.S. Census of Housing, 1950, 1960, 1970; 1950, Vol. I: General Characteristics, Chapter 46, Virginia, H-A46; 1960, Vol. I: States and Small Areas, Virginia, Final Report HC(1)-48; 1970, Detailed Housing Characteristics, Final Report HC(1)-B48, Virginia.

Note: 1950 Housing Count includes Fairfax City.

OWNED AND RENTED HOUSING UNITS, FAIRFAX COUNTY

1974 to 1977

---

Housing Tenure	Year			
	1974	1975	1976	1977
Owned Units <sup>1</sup>	121,264	126,014	129,408	134,182
Rented Units	46,277	46,955	47,768	51,697
Total Housing Units	167,541	172,969	177,176	185,879

---

<sup>1</sup> Includes individually owned single family, townhouse, and condominium housing units which are being rented out by their owners.

---

Source: Fairfax County Office of Research and Statistics.

HOUSING VALUE  
FAIRFAX COUNTY, 1950, 1960, 1970

Value	1950	1960	1970
Less than \$5,000	1,299	783	149
\$5,000 to \$9,999	2,483	1,989	425
\$10,000 to \$14,999	4,967	9,659	1,071
\$15,000 to \$19,999	1,577	14,785	4,838
\$20,000 to \$24,999	1,407	10,027	8,433
\$25,000 to \$34,999		6,922	23,239
\$35,000 or More		2,696	39,488
Total Owner-Occupied	11,733	46,861	77,643
Median	\$12,048	\$18,700	\$35,300

Source: U.S. Bureau of the Census, U.S. Census of Housing, 1950, 1960, 1970. 1950, Vol. I: General Characteristics, Chapter 46, Virginia H-A46; 1960, Vol. I: States and Small Areas, Virginia, Final Report HC(1)-48; 1970, Detailed Housing Characteristics, Final Report HC(1)-B48, Virginia.

- Notes:
1. 1950 data is for owner-occupied, one-family dwellings only. Value category \$20,000 to \$24,999 includes all one-family dwellings valued at \$20,000 or more.
  2. 1960 data uses value categories \$5,000 to \$9,900 rather than \$5,000 to \$9,999.
  3. 1970 data is for single-family dwellings only on less than 10 acres and with no business attached.

ESTIMATED PRICE DISTRIBUTION OF OWNED HOUSING UNITS

Fairfax County, 1973 to 1977

Price	Year				
	1973	1974	1975	1976	1977
	%	%	%	%	%
Under \$30,000	7.7	7.2	5.9	3.5	3.7
30,000 - 34,999	5.4	3.9	3.4	3.1	2.6
35,000 - 39,999	7.7	6.2	5.4	4.5	3.6
40,000 - 44,999	11.1	9.1	6.3	5.6	5.4
45,000 - 49,999	12.1	11.1	8.9	7.7	6.6
50,000 - 54,999	13.8	12.4	10.6	9.8	9.3
55,000 - 59,999	11.2	12.0	11.5	10.4	10.1
60,000 - 69,999	15.8	18.0	18.9	20.4	20.1
70,000 - 79,999	7.3	9.3	13.1	14.8	16.5
80,000 - 89,999	3.3	4.6	7.7	9.1	10.0
90,000 - 99,999	1.6	2.2	3.6	4.9	5.0
\$100,000 or More	3.0	3.7	4.7	6.2	7.1
Total	100.0	100.0	100.0	100.0	100.0
Median	\$53,000	\$55,000	\$59,100	\$62,600	\$64,600

Source: Fairfax County Office of Research and Statistics

MEDIAN FAMILY INCOME AND MEDIAN HOUSING VALUE

Fairfax County, Selected Years

Year	Median Housing Value	Median Family Income	Ratio of Housing Value to Income
1950	\$12,048	\$ 4,199	2.87
1960	\$18,700	\$ 8,607	2.17
1970	\$35,300	\$15,707	2.25
1975	\$59,100	\$21,100	2.80
1976	\$62,600	\$22,800	2.75
1977	\$64,600	\$24,500	2.64

Sources: U.S. Bureau of the Census, Census of Population and Housing: 1970; Census Tracts, Final Report PHC(1)-226, Washington, D.C.--Maryland--Virginia SMSA.

U.S. Bureau of the Census, U.S. Census of Population: 1960; General Social and Economic Characteristics, Virginia, Final Report PC(1)-48C.

U.S. Bureau of the Census, U.S. Census of Population: 1950; Volume II: Characteristics of the Population, Part 46, Virginia, Chapter B.

Fairfax County Office of Research and Statistics.

Washington Center for Metropolitan Studies, Trends Alert, 1975.

VALUE OF OWNER-OCCUPIED HOUSING UNITS BY NUMBER OF BEDROOMS

FAIRFAX COUNTY, 1975

Value	Number of Bedrooms				
	1	2	3	4	5+
	%	%	%	%	%
\$ 0 - 19,999	18.9	7.5	1.7	0	1.0
20 - 29,999	0	11.0	2.6	0.2	0
30 - 39,999	46.7	43.9	12.1	2.0	0.6
40 - 49,999	34.4	18.1	24.8	7.7	0
50 - 59,999	0	5.2	36.6	22.4	7.1
60 - 74,999	0	8.4	16.3	45.0	29.0
75 - 99,999	0	3.3	3.6	19.6	42.7
\$100,000 or More	0	2.6	2.3	3.1	19.6
Total	100.0	100.0	100.0	100.0	100.0

Source: Washington Center for Metropolitan Studies, 1975, unpublished tabulations based on sample.



MONTHLY GROSS RENT CHARACTERISTICS

FAIRFAX COUNTY--1950, 1960, 1970

	<u>1950</u>	<u>1960</u>	<u>1970</u>
Renter Occupied Dwellings			
Monthly Gross Rent			
Less than \$30	516	68	12
\$30 to \$39	714	75	9
\$40 to \$59	1,157	697	110
\$60 to \$99	3,494	5,250	1,393
\$100 to \$149		5,004	11,922
\$150 to \$199	1,113	2,197	17,488
\$200 or More	(\$100 or More)	1,064	11,171
Rent Free or Not Reported	<u>1,026</u>	<u>805</u>	<u>1,895</u>
Total Renter Occupied Dwellings	8,020	15,160	44,000
Median Rent	\$73.65	\$105	\$172

Source: U.S. Bureau of the Census, U.S. Census of Housing, 1950, 1960, 1970.

AVERAGE RENTS IN MAJOR RENTAL HOUSING PROJECTS\* BY SUPERVISOR DISTRICT

Fairfax County, 1976 and 1977

---

Supervisor District	1976	1977	Percent Change
Lee	\$225	\$234	4.0%
Mason	245	264	7.8
Mt. Vernon	246	265	7.7
Providence	256	267	4.3
Annandale	259	281	8.5
Dranesville	263	285	8.4
Springfield	265	274	3.4
Centreville	267	281	5.2
COUNTYWIDE TOTAL	\$251	\$266	6.0%

---

\* Includes only those units located in major rental apartment and townhouse projects of five or more units.

---

Source: Fairfax County Office of Research and Statistics

RENTAL HOUSING VACANCY RATES BY HOUSING TYPE

Fairfax County, 1977

---

Housing Type	Number of Vacant Units	Percent of Total Inventory Vacant
Garden Apartments	1,343	4.0
Mid-Rise Apartments	101	6.2
High-Rise Apartments	195	3.5
Townhouses	74	2.8
COUNTY TOTAL	1,713	3.9

---

Source: Fairfax County Office of Research and Statistics

Note: Figures include only those units located in major rental apartment and townhouse projects of five or more units.

RENT-INCOME RATIO BY AGE OF HOUSEHOLD HEAD

FAIRFAX COUNTY, 1975

---

Rent/Income Ratio	Age of Head					
	14-24	25-34	35-44	45-54	55-64	65+
0 - 24.9%	51.9	55.9	72.7	61.2	75.6	20.1
25 - 34.9%	22.1	27.3	12.6	28.9	19.0	8.0
35% or More	26.0	16.8	14.7	9.9	5.4	71.9
Total	100.0	100.0	100.0	100.0	100.0	100.0

---

Source: Washington Center for Metropolitan Studies, 1975, unpublished tabulations based on sample.

RENT-INCOME RATIO BY HOUSEHOLD INCOME LEVEL

FAIRFAX COUNTY, 1975

Rent/Income Ratio	Income Level					
	\$ 0 3,999	4,000- 7,999	8,000- 9,999	10,000- 14,999	15,000- 24,999	25,000 +
0 - 24.9%	6.9	5.2	35.1	73.8	95.4	96.3
25 - 34.9%	0	37.5	50.7	20.9	4.6	3.7
35% or More	93.1	57.3	14.2	5.3	0	0
Total	100.0	100.0	100.0	100.0	100.0	100.0

Source: Washington Center for Metropolitan Studies, 1975, unpublished tabulations based on sample.

MONTHLY GROSS RENT OF RENTER-OCCUPIED HOUSING UNITS

BY NUMBER OF BEDROOMS

FAIRFAX COUNTY, 1975

Monthly Gross Rent	Number of Bedrooms			
	1	2	3	4
		Percents		
\$ 0 - 99	2.1	2.1	0	3.5
100 - 149	9.4	1.1	2.4	3.0
150 - 199	54.6	19.9	15.1	5.4
200 - 249	27.8	56.4	10.0	4.0
250 - 299	6.1	13.3	26.2	10.8
300 - 399	0	7.2	41.7	52.6
\$400 or more	0	0	4.6	20.7
Total	100.0	100.0	100.0	100.0

Source: Washington Center for Metropolitan Studies, 1975, unpublished tabulations based on sample.

PERSONS PER ROOM

FAIRFAX COUNTY, 1970 AND 1975

Persons Per Room	Year	
	1970	1975
1.00 or Less	96.4%	97.7%
1.01 to 1.50	2.9	1.8
1.51 or More	0.7	0.5

Sources: U.S. Bureau of the Census, U.S. Census of Population and Housing: 1970; Census Tracts, Washington, D.C.--Maryland--Virginia SMSA, PHC(1)-226.  
Washington Center for Metropolitan Studies, 1975, unpublished tabulations based on sample.

LENGTH OF RESIDENCE BY TYPE OF TENURE

FAIRFAX COUNTY, 1970

<u>Year Moved</u> <u>To Fairfax County</u>	<u>Percent of Households by Tenure</u>		
	<u>Owner Occupied</u>	<u>Renter Occupied</u>	<u>Total Households</u>
1969-1970	14.8	54.1	28.8
1968	11.7	20.1	14.7
1965-1967	24.5	18.8	22.5
1960-1964	24.3	4.7	17.3
1950-1959	19.6	1.8	13.2
1949 or earlier	5.1	0.5	3.5
TOTAL	100.0	100.0	100.0

---

Source: U.S. Bureau of the Census, U.S. Census of Population and Housing,  
Fourth Count Summary Tape.



FAIRFAX COUNTY BUILDING PERMIT ACTIVITY

1970 to 1976

Fiscal Year	Total Value All Permits	Residential		Nonresidential		Repairs and Alterations	
		No. Units	Value	No. Permits	Value	Value	
1970	\$181,011,899	7,710	\$129,405,560	176	\$ 28,554,307	\$14,692,420	
1971	\$265,418,128	10,433	\$179,274,837	154	\$ 58,297,040	\$16,373,342	
1972	\$346,518,737	14,400	\$233,732,648	197	\$ 77,764,644	\$21,979,933	
1973	\$375,339,297	15,704	\$287,804,251	168	\$ 37,261,015	\$28,053,778	
1974	\$376,225,180	8,500	\$192,388,172	125	\$117,328,493	\$38,870,135	
1975	\$156,086,937	3,000	\$ 68,287,134	77	\$ 45,443,050	\$42,356,753	
1976	\$213,500,080	4,232	\$134,859,696	67	\$ 43,903,600	\$34,736,784	

Source: Fairfax County Department of Environmental Management.

NUMBER OF NEW HOUSING UNITS AUTHORIZED BY BUILDING PERMITS

by Jurisdiction, 1970 to 1976

Jurisdiction	Year						
	1970	1971	1972	1973	1974	1975	1976
Fairfax County, Virginia*	8,061	13,523	16,959	11,209	4,477	3,251	5,886
Arlington County, Virginia	523	665	121	1,655	219	189	419
Prince William County, Virginia**	2,579	4,146	3,771	3,332	931	800	1,776
Loudoun County, Virginia	519	2,028	1,587	1,360	1,122	224	496
Alexandria City, Virginia	387	1,127	2,811	2,393	3,145	987	623
Montgomery County, Maryland	8,287	10,377	10,514	7,802	1,632	1,715	3,029
Prince George's County, Maryland	5,287	5,085	5,953	6,775	2,833	1,453	2,049
Charles County, Maryland	---	---	928	1,019	582	783	1,032
District of Columbia	1,913	834	591	1,790	1,226	436	2,199
Washington SMSA	27,475	37,788	43,235	37,335	16,167	9,838	17,509

\* Includes the cities of Fairfax and Falls Church.

\*\* Includes the cities of Manassas and Manassas Park.

Source: U.S. Department of Commerce, Bureau of the Census, Construction Reports, Authorized Construction, Washington, D.C. Area, for years cited.

CONSTRUCTION ACTIVITY

Fairfax County, As of January 1977

---

Stage in Development Process	Number of Units	Percent of Proposed Units
Under Construction	5,467	5.7
Building Permit Issued, but Not Started	4,082	4.3
Site Plan Approved	13,560	14.1
Site Plan Submitted	35,379	36.9
Rezoning Granted	20,978	21.8
Rezoning Pending	11,746	12.2
Rezoning Denied or Withdrawn	4,821	5.0
Total Planned Growth	96,033	100.0

---

Source: Fairfax County Office of Research and Statistics,  
Standard Reports, 1977.

RESIDENTIAL-CONSTRUCTION ACTIVITY,

UNITS AUTHORIZED BY BUILDING PERMITS

FAIRFAX COUNTY, 1960--1976

<u>Calendar Year</u>	<u>Single Family Units</u>		<u>Multi-Family Units</u>	
	<u>Number</u>	<u>Estimated Cost</u>	<u>Number</u>	<u>Estimated Cost</u>
1960	3,363	\$ 53,098,249	210	\$ 1,657,000
1961	3,421	54,835,456	1,674	12,299,500
1962	3,909	63,644,443	3,042	23,741,500
1963	4,211	71,993,942	2,528	16,117,800
1964	4,311	76,441,933	4,188	29,038,176
1965	5,090	88,761,762	5,217	36,094,563
1966	4,064	68,648,739	3,582	26,576,700
1967	4,631	83,144,406	3,032	25,291,325
1968	5,164	98,592,764	1,155	18,069,664
1969	5,307	103,190,312	1,668	18,232,020
1970	4,363	100,012,997	3,066	27,138,500
1971	7,643	152,019,360	5,860	57,027,814
1972	11,845	230,915,919	5,098	61,058,005
1973	7,949	188,955,117	3,557	52,926,615
1974	2,913	86,905,849	2,277	31,657,744
1975	2,479	85,830,079	676	10,882,868
1976	5,083	172,557,933	899	14,184,031

Source: Department of Environmental Management, Division of Inspection Services, Fairfax County, Virginia.

Note: Single family category includes single family, duplex, townhouse, and multiplex housing units. Multi-family category includes garden and elevator apartment units.

VI. REVENUES AND EXPENDITURES

REVENUE SOURCES (000's) FOR ALL FUNDS

Fairfax County, FY1962 to FY1976

Fiscal Year	Total	Local			State	Federal
	Total Revenue <sup>2</sup> All Sources	Total Revenue From Local Sources	Revenue From Property <sup>1</sup> Taxes	Other Local Sources	Revenue From Commonwealth	Revenue From Federal Government
1962	\$ 43,736	\$ 30,213	\$ 22,194	\$ 8,019	\$ 8,664	\$ 4,859
1963	51,085	34,630	25,300	9,330	9,450	7,005
1964	59,982	42,275	31,292	10,983	10,412	7,295
1965	67,428	49,865	36,119	13,746	12,285	5,278
1966	83,842	59,720	44,442	15,278	13,550	10,572
1967	97,371	67,042	47,127	19,915	19,945	10,384
1968	120,051	81,875	53,399	28,476	25,802	12,374
1969	149,843	100,167	63,583	36,584	33,077	16,599
1970	173,068	119,763	74,073	45,690	38,391	14,914
1971	199,619	140,926	86,220	54,706	41,302	17,391
1972	238,014	174,429	97,500	76,929	47,469	16,116
1973	289,414	208,437	114,111	94,326	54,469	26,508
1974	331,500	239,458	130,970	108,488	60,998	31,044
1975	361,982	257,269	143,910	113,359	66,740	37,973
1976	413,111	285,362	160,742	124,620	74,664	53,085

ources: County of Fairfax, Virginia; Report on Audit for the Fiscal Years 1962 to 1967.

County of Fairfax, Virginia; Accountants' Report Financial Statements and Supplementary Data for the Fiscal Years 1968 to 1976.

- Notes: 1. Property Taxes include real and personal property.
2. Revenue sources are not total income sources for the County; excluded are bond sales and other "non-revenue" items.

FAIRFAX COUNTY OPERATING EXPENDITURES

FY1962 to FY1976<sup>1</sup>

Fiscal Year	GENERAL GOVERNMENT EXPENSES (000's)										SCHOOL EXPENSES (000's)			
	Total Gen. Govt. Expend.	County Admin.	Admin. of Justice	Crime Prevention	Fire Prevention	Public Welfare	Public Health	Public Works	County Devel.	Library	Other Oper. Expend.	Total School	Instruction	Pupil Transport
1962	9,104	240	213	1,580	726	1,367	375	2,366	---	437	1,800	24,346 <sup>2</sup>	17,472	788
1963	11,132	323	267	1,818	858	1,510	551	2,921	---	646	2,238	28,516	21,816	874
1964	12,384	363	286	1,972	957	1,696	589	3,141	---	765	2,615	34,268	26,513	1,067
1965	14,949	639	347	2,311	1,208	2,033	669	3,510	---	933	3,299	40,140	31,395	1,181
1966	17,467	820	395	2,620	1,411	2,371	824	3,901	---	1,123	4,002	47,614	37,533	1,224
1967	21,114	929	468	3,099	1,750	2,659	880	4,504	---	1,330	5,495	54,840	43,347	1,441
1968	25,815	1,124	585	3,756	2,200	3,336	1,001	5,631 <sup>4</sup>	---	1,561	6,621	67,062	50,877	1,658
1969	31,191	1,452	699	4,606	2,764	4,120	1,198	4,657	1,612	1,667	8,416	84,538	63,585	2,139
1970	37,063	2,062	857	5,536	3,543	4,828	1,574	4,803	2,547	1,909	9,404	103,754	76,452	2,378
1971	48,285	2,418	1,159	6,008	4,239	6,408	1,612	6,265	2,816	2,813	14,547	118,422	86,541	2,129
1972	59,057	8,546 <sup>3</sup>	1,569	7,433	5,252	8,354	1,965	8,680	3,289	3,192	10,777	130,207	94,770	1,844
1973	68,992	7,318	1,880	9,696	6,589	9,382	2,135	11,049	3,770	3,510	13,663	145,182	103,487	3,695
1974	79,105	10,360	2,462	11,398	7,638	11,095	2,827	12,132	4,471	3,950	12,772	162,128	112,155	4,577
1975	109,118	18,156	3,300	14,157	9,378	13,961	3,828	15,671	5,209	4,531	20,927	184,255	125,441	5,255
1976	126,851	21,270	3,840	16,017	11,034	16,386	4,389	21,783	2,258	4,828	20,203	212,580	142,202	5,347

Source: County of Fairfax, Virginia, Report on Audit, Schedules B-1 and B-2 for FY1962--FY1967.

County of Fairfax, Virginia, Accountant's Report, Financial Statement and Supplementary Data, FY1968--FY1976.

- Notes:
1. Operating Expenditures do not include debt service or capital expenditures.
  2. Fiscal Year 1962 school operating expenses were adjusted to reflect the removal of vehicle replacement costs.
  3. County Administrative costs in FY1972 contain employee benefits in personnel costs for the first time. These costs were formerly in the other operating expenditures column.
  4. Prior to 1969, some of the functions of the Department of Environmental Management were included within the Department of Public Works.

LONG-TERM INDEBTEDNESS, FAIRFAX COUNTY

FY1962 to FY1976

Fiscal Year	Total Long Term Indebtedness	Self-Supporting Debt <sup>1</sup>	Net Debt <sup>2</sup>
1962	\$ 83,933,050	\$ 18,985,000	\$ 64,948,050
1963	86,793,920	18,770,000	68,023,920
1964	102,279,790	28,515,000	73,764,790
1965	110,590,460	29,910,000	80,680,460
1966	128,483,580	29,350,000	99,133,580
1967	167,011,850	48,755,000	118,256,850
1968	189,397,620	48,470,000	140,927,620
1969	210,755,140	47,740,000	163,015,140
1970	217,601,485	46,975,000	170,626,485
1971	291,606,680	76,145,000	215,461,680
1972	325,342,650	75,270,000	250,072,650
1973	338,708,455	73,995,000	264,713,455
1974	374,575,435	71,690,000	302,885,435
1975	383,971,248	69,145,833	314,825,415
1976	370,475,395	66,530,000	303,945,395

Source: County of Fairfax, Virginia, Report on Audit, Schedules A-2 for Fiscal Years 1962-1967.

County of Fairfax, Virginia, Accountants' Report Financial Statements and Supplementary Data, Schedule A-2 for Fiscal Years 1968-1976.

Note: 1 Self-Supporting Debt is paid by means of service charges and not from the general fund. Included in this category are sanitary district sewer bonds and integrated sewer system sewer bonds.

2 Net Debt is the difference between total long-term indebtedness and self-supporting debt. Net Debt is paid from the general fund.



NET DEBT PER CAPITA, FAIRFAX COUNTY

FY1962 to FY1976

<u>Fiscal Year</u>	<u>Population</u>	<u>Net Debt</u>	<u>Net Debt Per Capita</u>
1962	275,746	\$ 64,948,050	\$236
1963	292,387	68,023,920	233
1964	313,868	73,764,790	235
1965	329,455	80,680,460	245
1966	350,469	99,133,580	283
1967	379,055	118,256,850	312
1968	409,267	140,927,620	344
1969	432,482	163,015,140	377
1970	454,275	170,626,485	376
1971	470,600	215,461,680	458
1972	487,600	250,072,650	513
1973	505,700	264,713,455	523
1974	522,200	302,885,435	580
1975	537,200	314,825,415	586
1976	554,500	303,945,395	548

Sources: County of Fairfax, Virginia, Accountants' Report Financial Statements and Supplementary Data.  
Fairfax County Office of Research and Statistics.

ASSESSED VALUATION OF ALL TAXABLE PROPERTY

Fairfax County, FY1962 to FY1976

Fiscal Period	Real Property	Personal Property	Other	Total
1962	\$ 551,478,850	\$ 95,713,008	\$ 62,597,638	\$ 709,789,496
1963	560,136,059	100,955,679	64,669,824	725,761,562
1964	622,597,379	115,624,355	71,491,300	809,713,034
1965	710,645,639	136,445,558	85,105,891	932,197,088
1966	816,618,265	161,801,515	92,664,242	1,071,084,022
1967	955,973,293	132,501,000	65,383,418	1,153,857,711
1968	1,082,444,867	147,662,999	72,057,626	1,302,165,492
1969	1,204,347,685	174,547,681	74,829,234	1,543,724,600
1970	1,423,561,909	206,556,457	83,177,743	1,713,296,109
1971	1,641,749,466	237,650,250	94,346,408	1,973,746,124
1972	1,836,488,713	274,798,214	108,500,174	2,219,787,119
1973	2,164,570,383	323,449,861	119,941,391	2,607,961,635
1974	2,525,223,486	380,956,246	121,467,326	3,027,647,058
1975	2,915,727,620	428,208,384	133,617,639	3,477,553,643
1976	2,582,519,443	377,827,671	124,014,239	3,084,316,353

Source: County of Fairfax, Virginia, Report on Audit, for FY1962--1967.  
County of Fairfax, Virginia, Accountants' Report, Financial Statements  
and Supplementary Data, for FY1968--FY1972 and FY1974--FY1976.

Note: Assessed values are as of June 30 for the cited years.

COMPARISON OF ASSESSED VALUATION OF ALL  
TAXABLE PROPERTY TO NET DEBT  
Fiscal Years 1962--1976

Fiscal Period	Total Assessed Valuation	Net Debt	Ratio of Assessed Valuation to Net Debt
1962	\$ 709,789,496	\$ 64,948,050	10.93
1963	725,761,562	68,023,920	10.67
1964	809,713,034	73,764,790	10.98
1965	932,197,088	80,680,460	11.55
1966	1,071,084,022	99,133,580	10.80
1967	1,153,857,711	118,256,850	9.76
1968	1,302,165,492	140,927,620	9.24
1969	1,543,724,600	163,015,140	9.47
1970	1,713,296,109	170,626,485	10.04
1971	1,973,746,124	215,461,680	9.16
1972	2,219,787,119	250,072,650	8.88
1973	2,620,998,827	264,713,455	9.90
1974	3,027,647,058	302,885,435	10.00
1975	3,477,553,643	314,825,415	11.05
1976	3,084,316,353	303,945,395	10.15

Source: County of Fairfax, Virginia, Report on Audit, for FY1962-FY1967.  
County of Fairfax, Virginia, Accountants' Report, Financial Statement and Supplementary Data for FY1968-FY1976.

ASSESSED VALUE OF REAL ESTATE  
IN FAIRFAX COUNTY BY GENERAL ZONING CATEGORY  
1965, 1970 to 1977

Year	Total Assessed Value	General Zoning Category		
		Residential	Commercial	Industrial
1965	\$ 781,732,484 100%	\$ 682,953,609 87.4%	\$ 77,381,160 9.9%	\$ 21,397,715 2.7%
1970	1,571,211,641 100%	1,342,879,536 85.5%	166,534,665 10.6%	61,797,440 3.9%
1971	1,765,343,681 100%	1,517,314,456 86.0%	180,155,290 10.2%	67,873,935 3.8%
1972	2,068,288,561 100%	1,721,921,321 83.2%	246,016,525 11.9%	100,350,715 4.9%
1973	2,400,844,876 100%	2,011,883,156 83.8%	276,590,515 11.5%	112,371,205 4.7%
1974	2,784,068,771 100%	2,367,635,011 85.0%	297,325,935 10.7%	119,107,825 4.3%
1975	3,291,780,075 100%	2,782,690,405 84.5%	354,520,900 10.8%	154,568,770 4.7%
1976	3,612,839,220 100%	3,079,533,625 85.2%	372,867,060 10.3%	160,438,535 4.5%
1977*	10,191,026,015 100%	8,733,843,240 85.7%	995,664,545 9.8%	461,518,230 4.5%

\* Represents assessments at 100 percent of market value. Assessed value of all other years is based on 40 percent of market value.

Source: Fairfax County Office of Assessments, Department of Budget and Financial Management.

PERCENT CHANGE IN TOTAL REAL ESTATE ASSESSMENTS

Fairfax County, 1970 to 1977

Period	Total Increase	Percent Change
1970-1971	\$ 194,132,040	12.4%
1971-1972	302,944,880	17.2
1972-1973	332,556,315	16.1
1973-1974	383,223,895	16.0
1974-1975	507,711,304	18.2
1975-1976	321,059,145	9.8
1976-1977	1,158,927,965	12.8

Source: Fairfax County Office of Assessments, Department of Budget and Financial Management.

PROPORTION OF ACREAGES ZONED FOR COMMERCIAL AND INDUSTRIAL USES

Fairfax County, 1964 to 1977

Year	Acres Zoned Commercial and Industrial	Percent of Total Acreage
1964	5,793	2.4
1965	6,106	2.6
1966	6,272	2.6
1967	6,512	2.7
1968	6,780	2.8
1969	7,450	3.1
1970	7,707	3.2
1971	8,270	3.4
1972	Not Reported	---
1973	8,668	3.6
1974	9,271	3.9
1975	8,951	3.7
1976	8,757	3.6
1977	10,120	4.3

Sources: Office of Comprehensive Planning, Composite County Zoning Totals, 1964 to 1970.

Volume 1, Presentation of Alternatives, 5 Year Countywide Development Program, Fairfax County, Virginia, August 7, 1972.  
(For 1971 data.)

Fairfax County Office of Research and Statistics.

Note: Total County zoned acreage is estimated to be 237,195 acres.

PERSONAL AND REAL TAX COLLECTION, FAIRFAX COUNTY, FY1960--FY1976

Fiscal Year	Total Tax Levy	Collection Of Current Taxes	% Of Levy Collected	Collection Of Back Taxes	Total Collection Of Current And Back Taxes	% Of Current & Back Taxes Collected To Tax Levy
1960	\$ 17,720,139	\$ 17,128,955	96.66	\$ 371,283	\$ 17,500,239	98.76
1961	20,001,979	19,389,359	96.94	435,901	19,825,260	99.12
1962	22,371,566	21,694,523	96.97	535,696	22,230,220	99.37
1963	25,434,189	24,751,171	97.31	598,396	25,349,567	99.67
1964	31,485,534	30,694,436	97.49	640,742	31,335,178	99.52
1965	36,191,769	35,484,210	98.04	694,864	36,179,074	99.96
1966	44,820,624	43,841,950	97.81	655,618	44,497,569	99.28
1967	47,781,706	46,444,991	97.20	716,070	47,161,062	98.70
1968	53,819,001	52,449,154	97.45	906,259	53,355,413	99.14
1969	63,850,101	62,385,859	97.71	1,086,193	63,472,053	99.41
1970	75,238,892	72,878,146	96.86	1,083,763	73,961,909	98.30
1971	86,592,905	84,095,085	97.12	1,946,279	86,041,364	99.36
1972	97,334,385	95,251,065	97.85	2,148,868	97,392,111	100.05
1973	114,230,381	112,023,948	98.06	1,911,140	113,935,088	99.74
1974	131,596,477	129,160,610	98.15	1,721,009	130,881,619	99.45
1975	145,274,323	141,451,024	97.37	1,651,217	143,102,241	98.50
1976	129,659,553	126,909,860	97.88	2,061,455	128,971,315	99.50

Source: County of Fairfax, Virginia, Report on Audit for FY1960 to FY1967.  
 County of Fairfax, Virginia, Accountants' Report, Financial Statements and  
 Summary Data, for FY1968 to FY1976.

COMPARISON OF RATES OF COLLECTION OF CURRENT TAXES

TO THE GENERAL FUND AND REAL PROPERTY TAX RATE

Fairfax County, 1960 to 1976

<u>Fiscal Year</u>	<u>Collection Rate</u>	<u>Real Property Tax Rate</u>
1960	96.66	3.75
1961	96.94	3.75
1962	96.97	3.00
1963	97.31	3.35
1964	97.49	3.75
1965	98.04	3.75
1966	97.81	4.05
1967	97.20	4.05
1968	97.45	4.05
1969	97.71	4.30
1970	96.86	4.30
1971	97.12	4.30
1972	97.85	4.30
1973	97.9	4.30
1974	97.0	4.30
1975	97.6	4.10
1976	97.9	3.85

Source: Accountants' Report, County of Fairfax, Virginia (1960--1972)  
Approved Fiscal Plans, Fairfax County, Virginia (1962--1976)  
Office of Management and Budget, Fairfax County, Virginia



VEHICLE TAG SALES  
Fairfax County, 1960 to 1976

Year	TYPE OF TAG				Total
	Regular	Motorcycle	Military	Other*	
1960	80,612	278	---	1,068	81,958
1961	87,928	299	---	1,115	89,342
1962	96,710	359	---	1,113	98,182
1963	107,633	452	---	1,202	109,287
1964	117,755	607	---	1,241	119,603
1965	129,348	975	---	1,352	131,675
1966	138,318	1,364	---	1,357	141,039
1967	142,092	1,516	16,605	2,926	163,139
1968	154,612	1,695	17,296	3,333	176,936
1969	169,242	1,919	21,724	3,244	196,129
1970	181,193	2,307	21,678	3,627	208,805
1971	202,931	2,998	23,145	15,110	244,184
1972	227,497	3,550	25,211	15,486	271,744
1973	234,436	4,250	24,594	14,193	277,473
1974	258,829	5,766	24,599	15,445	304,639
1975	275,715	5,759	24,093	16,736	322,303
1976	293,253	5,465	25,203	19,512	343,433

Source: Fairfax County Office of Finance, Department of Budget and Financial Management.

\* Other includes fire, duplicates, transfers, and free tags issued.

VII. MISCELLANEOUS

INCREASE OF AMBULANCE/RESCUE CALLS

Fairfax County\*, 1962 to 1975

Year	Number of Ambulance/ Rescue Calls	Annual Percent Increase	Percent Increase 5 Year Periods	Percent Increase 10 Year Period
1962	8,901	7.12	---	---
1963	10,147	13.99	---	---
1964	10,843	6.85	---	----
1965	11,891	9.66	---	---
1966	13,024	9.52	---	---
1967	13,870	6.49	55.8	---
1968	15,366	10.78	51.4	---
1969	15,899	3.46	46.6	---
1970	16,965	6.70	42.7	---
1971	18,214	7.36	39.8	---
1972	19,045	4.56	37.3	113.9
1973	20,986	10.19	36.6	106.8
1974	22,040	5.02	38.6	103.3
1975	24,922	13.08	46.9	109.6
1976	27,531	10.47	51.2	111.4

\*Including Fairfax City

Source: Fairfax County Fire and Rescue Services.

FIRE FIGHTING ACTIVITIES  
Fairfax County\*, 1973 to 1976

Activity	Years			
	1973	1974	1975	1976
Alarms of Fire Per 1,000 Persons	12.42	15.28	12.61	13.65
Building Fires Per 1,000 Persons	1.93	2.10	1.67	1.59
Outside Fires Per 1,000 Persons	3.05	3.90	3.02	4.06
Vehicle Fires Per 1,000 Persons	1.40	1.37	1.41	1.53
Malicious False Alarms Per 1,000 Persons	0.82	1.18	0.89	0.90

\* Includes Fairfax City

Source: Fairfax County Fire and Rescue Services

PERCENTAGES OF TOTAL BUILDING FIRES BY TYPE OF OCCUPANCY

Fairfax County\*, 1973 to 1976

---

Type of Occupancy	Year			
	1973	1974	1975	1976
Public Assembly	3.7%	3.5%	3.6%	3.4%
Educational	5.8	5.8	4.4	4.0
Institutional	1.5	0.8	2.2	1.1
Residences	70.9	68.9	72.7	74.6
Stores and Offices	5.1	5.3	4.6	6.6
Basic Industry	0.8	0.5	0.4	0.2
Manufacturing	1.9	1.8	0.6	0.6
Storage	3.7	4.0	3.4	3.2
Special Property	6.6	9.4	8.1	6.3
Total	100.0%	100.0%	100.0%	100.0%

---

\* Includes Fairfax City

Source: Fairfax County Fire and Rescue Services

FIRE LOSS<sup>1</sup> BY TYPE OF OCCUPANCY

Fairfax County\*, 1973 to 1976

Type of Occupancy	Years			
	1973	1974	1975	1976
Public Assembly	\$ 197,934	\$ 248,944	\$ 183,077	\$ 228,460
Educational	9,074	69,360	110,750	44,195
Institutional	37,590	6,045	2,375	700
Dwellings	2,000,724	2,285,479	3,002,858	3,181,698
Apartments	404,182	521,085	908,005	869,642
Hotels	10,300	10,875	250	7,650
Other Residential	9,250	33,625	29,100	79,925
Stores and Offices	1,045,858	1,076,584	786,965	804,292
Manufacturing	1,560	332,500	124,500	250,000
Storage	53,820	197,588	80,485	56,875
Miscellaneous	357,806	108,400	4,500	4,377
 Total Building Fires <sup>2</sup>	 \$4,128,098	 \$4,890,485	 \$5,232,865	 \$5,527,814
Average Loss	3,890	4,199	5,543	5,982
 Motor Vehicles	 \$ 112,944	 \$ 163,490	 \$ 209,677	 \$ 174,247
Outside	2,720	6,560	1,035	30,782
 Total Fire Loss	 \$4,243,762	 \$5,060,535	 \$5,443,577	 \$5,732,843
 Fire Loss Per Capita	 \$7.92	 \$9.19	 \$9.60	 \$9.84

\* Includes Fairfax City

- Notes: 1. Includes only fire loss for those fires investigated by the Fire Marshal's Office.
2. Increase due largely to a fire involving building materials stored outside.

Source: Fairfax County Fire and Rescue Services

FIRE LOSS AND VALUE OF PROPERTY INVOLVED IN FIRE

Fairfax County\*, 1969 to 1976

Year	Fire Loss	Value of Property Involved in Fire	Fire Loss as Percent of Value
1969	\$2,452,417	\$198,200,000	1.24%
1970	2,419,761	142,830,000	1.69
1971	2,594,996	127,030,000	2.04
1972	3,501,574	537,990,000	0.65
1973	4,243,762	287,110,000	1.48
1974	5,060,535	246,150,000	2.06
1975	5,443,577	645,260,000	0.84
1976	5,732,843	324,730,000	1.77

\*Includes Fairfax City.

Source: Fairfax County Fire and Rescue Services

INDEX CRIMES BY YEAR

Fairfax County\*, 1974 to 1976

---

Index Crime	1974	1975	1976
Homocide	14	21	19
Rape	114	104	96
Robbery	493	433	385
Aggravated Assault	289	247	307
Burglary	5,648	5,624	5,551
Larceny	15,519	16,075	15,083
Auto Theft	2,399	2,013	1,753

---

\* Excluding the population in Herndon, Vienna, Clifton, Lorton Reformatory, and Fort Belvoir.

---

Source: Fairfax County Police Department



INDEX CRIME RATE PER 100,000 PERSONS, BY YEAR

Fairfax County\*, 1974 to 1976

---

Index Crime	Rate Per 100,000 Persons		
	1974	1975	1976
Homocide	2.8	4.2	3.6
Rape	23.2	20.6	18.4
Robbery	100.3	85.8	73.6
Aggravated Assault	58.8	49.0	58.7
Burglary	1,149.4	1,114.6	1,061.4
Larceny	3,158.1	3,185.7	2,883.9
Auto Theft	488.2	398.9	335.2

---

\* Excluding the population in Herndon, Vienna, Clifton, Lorton Reformatory and Fort Belvoir which are areas not served by the Fairfax County Police.

Source: Fairfax County Police Department

VOTER REGISTRATION AND ELECTION INFORMATION

Fairfax County, 1968 to 1976 (November)

---

Year	Number of Registered Voters	Number Voting in General Election	Voter Turnout (Percent)
1968	137,729	117,939	85.6%
1969*	127,107	69,359	54.6
1970	134,017	89,773	66.9
1971	144,744	73,649	50.9
1972	208,945	172,601	82.6
1973*	197,761	98,332	49.7
1974	206,119	116,858	56.7
1975	213,952	90,426	42.3
1976	262,613	207,016	78.8

---

\* Registration Books were purged in 1969 and 1973.

---

Source: Office of the Electoral Board and General Registrar, Fairfax County.

ELECTION SCHEDULE, FAIRFAX COUNTY

1972-1982

Elected Officials	Term	Last Elected	1972-1982											
			1972	1973	1974	1975	1976	1977	1978	1979	1980	1981	1982	
<u>Fairfax County</u>						■					■			
Board of Supervisors	4 years	1975				■					■			
Commonwealth's Attorney	4 years	1975				■					■			
Sheriff	4 years	1975				■					■			
Clerk of the Court	8 years	1975				■								
<u>Commonwealth of Virginia</u>				■					■				■	
Governor (cannot serve two successive terms)	4 years	1973		■					■				■	
Lt. Governor	4 years	1973		■					■				■	
Attorney General	4 years	1973		■					■				■	
State Senators (5)	4 years	1975				■					■			
Members of House of Delegates (10)	2 years	1975		■		■			■				■	
<u>United States</u>			■					■				■		
President and Vice President	4 years	1976	■					■				■		
United States Senators (2) (staggered terms)	6 years	1972 1976	■					■						■
Congressmen--8th and 10th Districts	2 years	1976	■		■			■			■			■

Source: Office of the Electoral Board and General Registrar, Fairfax County.

FAIRFAX COUNTY LIBRARIES

Fiscal Years 1972 to 1976

Item	Fiscal Year				
	1972	1973	1974	1975	1976
Number of Libraries	14	15	17	17	17
Number of Bookmobiles	3	3	3	3	3
Total Circulation	3,949,769	4,329,758	4,389,744	4,834,370	5,017,096
Registered Borrowers	215,423	234,838	247,729	263,179	270,073
Reference Questions Received	790,018	987,786	1,003,901	1,192,511	1,278,108
Number of Books	792,709	933,010	1,038,802	1,148,361	1,244,738
Number of Book Titles	118,225	137,151	153,248	171,542	186,065
Number of Films	1,443	1,235	1,276	1,502	1,633
Number of Records	3,620	3,966	4,610	16,307	16,648
Number of Special Music Books	18,852	9,480	9,879	9,974	10,351
Number of Talking Books	1,027	2,858	4,189	4,313	7,615
Books Per Capita	1.41	1.50	1.70	2.00	2.17
Books Per Registered Borrower	3.45	3.97	4.20	4.36	4.61
Circulation Per Capita	7.34	7.60	7.30	8.41	8.73
Circulation Per Registered Borrower	18.3	18.4	17.7	18.37	18.58
Percent of Population that are Registered Borrowers	41.1	41.2	41.3	45.8	47.0
Circulation Per Volume	4.98	4.64	4.23	4.21	4.03
Meeting Room Programs	3,037	5,017	6,207	7,515	8,676
Meeting Room Attendance	77,996	119,038	115,282	146,746	177,131

Source: Fairfax County Public Library, Annual Report.

CIRCULATION, REGISTRATIONS, AND VOLUMES BY LIBRARY

Fairfax County, Fiscal Year 1975-1976

Agency	Circulation	Registrations	Volumes
Central	677,761	38,922	215,756
Carter Glass	45,643	5,474	19,666
Centreville	178,588	8,289	42,091
Dolley Madison	315,646	19,897	72,702
Engleside	56,485	4,624	18,692
George Mason Regional	672,880	27,495	110,062
Herndon Fortnightly	62,666	3,306	16,468
John Marshall	180,881	10,752	44,228
Kings Park	496,292	23,144	57,442
Martha Washington	250,222	13,860	66,548
Patrick Henry	471,507	23,396	71,530
Reston Regional	316,813	14,717	46,858
Richard Byrd	346,715	19,494	69,106
Sherwood Regional	420,636	20,162	96,660
Thomas Jefferson	298,755	17,880	78,364
Tysons-Pimmit	108,848	6,295	32,737
Woodrow Wilson	114,393	12,366	61,994
Audio-Visual	2,365		

Source: Fairfax County Public Library, Annual Report, 1975-1976.

METROPOLITAN WASHINGTON AIRPORT ACTIVITY

1976

<u>Activity</u>	<u>Dulles International Airport</u>	<u>Washington National Airport</u>
<u>Passengers</u>		
Domestic Scheduled	2,095,234	11,734,524
Domestic Non-Scheduled	31,464	-0-
International Scheduled	509,202	-0-
International Non-Scheduled	40,310	-0-
Air Taxi (private service)	15,275	419,422
General Aviation	109,117	182,588
Military	<u>40,893</u>	<u>-0-</u>
Total Passengers	2,841,495	12,336,534
<u>Cargo (000 lbs.)</u>		
Mail--Domestic	27,567	83,652
Mail--International	2,666	-0-
Freight--Domestic	36,942	83,332
Freight--International	<u>30,880</u>	<u>-0-</u>
Total Cargo	98,055	166,984

Source: Federal Aviation Administration

AGRICULTURAL CHARACTERISTICS

Fairfax County, 1964, 1969, 1974

Characteristic	Year		
	1964	1968	1974
Number of Farms	128	278	230
Average Number of Acres Per Farm	148.5	130.2	106.6
Total Acres of Land in Farms	32,369	36,211	24,526
Average Value of Land and Buildings Per Farm	\$197,455	\$267,077	\$271,739
Market Value of All Agricultural Products Sold	\$2,167,850	\$2,538,384	\$2,591,000
Average Market Value of Products Per Farm	\$9,944	\$9,130	\$11,265
Average Age of Farm Operators (in years)	56.4	54.6	56.0

Source: U.S. Department of Commerce, Bureau of the Census, Census of Agricultural, County Data, for years cited.

VIII. INDEX



INDEX

	<u>Page</u>
A	
Acreage, Commercial, Industrial . . . . .	106
Age Distribution, Fairfax County . . . . .	8, 9, 10
Aggravated Assault, Volume, Rate . . . . .	117, 118
Agricultural Characteristics . . . . .	124
Airport Activity . . . . .	123
Ambulance-Rescue Calls . . . . .	112
Assault, Volume, Rate . . . . .	117, 118
Assessed Value, Real Estate . . . . .	104
Assessed Value, Taxable Property . . . . .	102, 103
Assessments, Real Estate . . . . .	105
Auto Theft, Volume, Rate . . . . .	117, 118
B	
Bedrooms, Number of . . . . .	84
Birth Rate . . . . .	14
Budgets, Family . . . . .	74, 75
Building Permit Activity . . . . .	93, 94, 95, 96
Burglary, Volume, Rate . . . . .	117, 118
Business, Establishments . . . . .	52
C	
Circulation, Library . . . . .	122
Commercial, Industrial, Acreage . . . . .	106
Commuters, Earnings of . . . . .	43
Commuters, In . . . . .	42, 43
Commuters, Out . . . . .	41, 43
Construction Activity . . . . .	95
Consumer Price Index . . . . .	72
Cost of Living . . . . .	72, 73
Crime Statistics . . . . .	117, 118
D	
Death Rate . . . . .	15
Death, Cause of . . . . .	16
Debt, Net . . . . .	101
Density, Population . . . . .	3
Divorces . . . . .	18
Dwelling Unit Inventory . . . . .	78

## E

Education, Income and . . . . .	.33
Education, Per Pupil Cost of. . . . .	.30
Education, Years Completed. . . . .	.13, 26
Effective Buying Income . . . . .	.71
Election Information. . . . .	.119, 120
Employment, Federal Agency. . . . .	.38
Employment, Federal Civilian. . . . .	.37
Employment, Government. . . . .	.39, 40
Employment, Industrial. . . . .	.49, 51
Employment, Wage and Salary . . . . .	.36
Expenditures, Operating . . . . .	.99

## F

Family Budget Levels. . . . .	.74, 75
Farm Characteristics. . . . .	124
Federal Employment. . . . .	.37, 38, 39, 40
Fire Fighting Activities. . . . .	113
Fire Loss, Occupancy. . . . .	.115, 116
Fire, Value of Property . . . . .	116
Fires, Building . . . . .	114
Food Stamp Participation. . . . .	.70

## G

Government, Employment. . . . .	.37, 38, 39, 40
Growth, Future Housing. . . . .	.95
Growth, Population. . . . .	.2, 5, 6, 7

## H

Homocide, Volume, Rate. . . . .	.117, 118
Household Relationship. . . . .	.21
Household Size. . . . .	.22, 23
Households. . . . .	.23
Household Characteristics . . . . .	.78, 79
Housing Tenure. . . . .	.79, 80
Housing Value . . . . .	.13, 81, 82
Housing Value, Income and . . . . .	.83
Housing Value, Number of Bedrooms . . . . .	.84

## I

Income, Adjusted Gross. . . . .	.62, 63, 64
Income, Below Poverty, Fairfax County . . . . .	.67, 68, 69
Income, Below Poverty, Region . . . . .	.66

I (Continued)

Page

Income, Education and . . . . .	33
Income, Effective Buying. . . . .	71
Income, Family, Fairfax County. . . . .	13, 58
Income, Family, Selected Areas. . . . .	13, 59
Income, Housing Value and . . . . .	.83
Income, Per Capita. . . . .	13, 60, 61
Indebtedness, Long-term . . . . .	100
Index Crimes, Rate. . . . .	118
Index Crimes, Volume. . . . .	117
Industrial, Commercial, Acreage . . . . .	106
Industrial, Firms, Number of. . . . .	49, 50
Industrial, Growth. . . . .	49

L

Labor Force Participation . . . . .	46, 47
Larceny, Volume, Rate . . . . .	117, 118
Libraries . . . . .	121, 122
Long-term Indebtedness. . . . .	100

M

Marital Status. . . . .	12
Marriages . . . . .	17
Membership, Schools . . . . .	27, 28
Migration, Net. . . . .	19
Mobility, Geographic. . . . .	20

N

Natural Increase. . . . .	19
Net Debt, Per Capita. . . . .	101

O

Occupation, Composition . . . . .	13, 35
Occupation, Earnings and. . . . .	48

P

Permit Activity . . . . .	93, 94, 95, 96
Personal Tax Collection . . . . .	107
Persons Per Acre. . . . .	3
Persons Per Household . . . . .	22, 78
Persons Per Room. . . . .	13, 91
Persons Per Square Mile . . . . .	3

Population Density, Supervisor Districts. . . . .	3
Population Growth, Region . . . . .	5, 6, 7
Population, Growth, Fairfax County. . . . .	2, 5, 6, 7
Population, Projected, Fairfax County . . . . .	2
Population, School Aged . . . . .	8, 9
Population, Supervisor Districts. . . . .	3
Poverty Levels. . . . .	.65
Poverty, Fairfax County . . . . .	.67, 68, 69
Poverty, Region . . . . .	.66

## R

Race, Fairfax County. . . . .	.11
Rape, Volume, Rate. . . . .	.117, 118
Real Estate, Assessed Value of. . . . .	104
Real Property Collection. . . . .	108
Real Property Tax Rate. . . . .	108
Rent-Income Ratio, Age of Head. . . . .	.88
Rent-Income Ratio, Household Income . . . . .	.89
Rent, Average . . . . .	.86
Rent, Gross . . . . .	.13, 85
Rent, Gross, Number of Bedrooms . . . . .	.90
Residence, Length of. . . . .	.92
Retail Sales. . . . .	.55
Revenue, Sources of . . . . .	.98
Robbery, Volume, Rate . . . . .	.117, 118

## S

Sales, Retail . . . . .	.55
Sales, Taxable. . . . .	.53, 54
Schools, Membership . . . . .	.27, 28
Schools, Personnel, Average Salary of . . . . .	.31
Schools, Public, Number of. . . . .	.29
Standard of Living. . . . .	.74, 75

## T

Tax Collection, Personal, Real. . . . .	107
Tax Collection, Rate of . . . . .	108
Tax Rate, Real Property . . . . .	108
Taxable Property, Assessed Value. . . . .	102
Taxable Sales . . . . .	.53, 54
Teachers, Average Salary of . . . . .	.31, 32

U

Unemployment. . . . .44, 45

V

Vacancy Rates, Rental Housing . . . . .87  
Vehicle Tag Sales . . . . .109  
Voter Registration. . . . .119

W

Weeks Worked, Labor Force . . . . .47

Y

Years of School Completed . . . . .13, 26