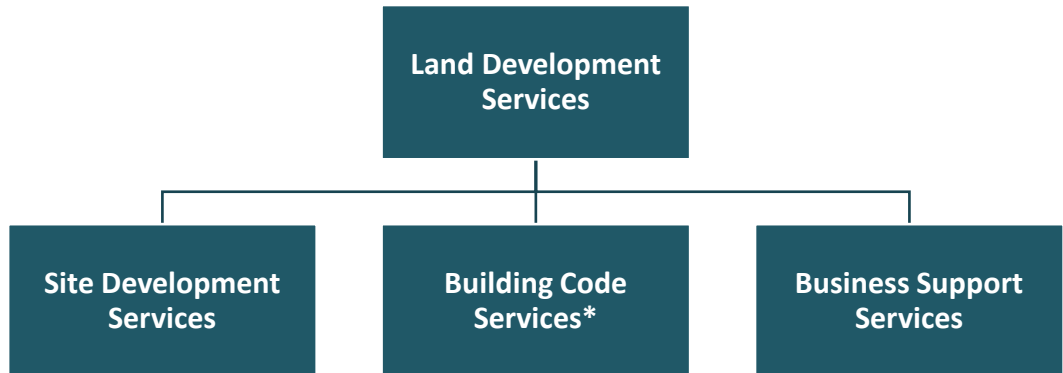


# Land Development Services

## Organizational Chart



\*Public Safety Program Area of Land Development Services

## Budget and Staff Resources

Category	FY 2022 Actual	FY 2023 Adopted	FY 2023 Revised	FY 2024 Advertised	FY 2024 Adopted
<b>FUNDING<sup>1,2</sup></b>					
<b>Expenditures:</b>					
Personnel Services	\$11,093,834	\$0	\$0	\$0	\$0
Operating Expenses	3,543,000	0	0	0	0
<b>Total Expenditures</b>	<b>\$14,636,834</b>	<b>\$0</b>	<b>\$0</b>	<b>\$0</b>	<b>\$0</b>
<b>Income:</b>					
Permits/Inspection Fees, and Miscellaneous	\$38,569,184	\$0	\$0	\$0	\$0
<b>Total Income</b>	<b>\$38,569,184</b>	<b>\$0</b>	<b>\$0</b>	<b>\$0</b>	<b>\$0</b>
<b>NET COST TO THE COUNTY<sup>3</sup></b>	<b>(\$23,932,350)</b>	<b>\$0</b>	<b>\$0</b>	<b>\$0</b>	<b>\$0</b>
<b>AUTHORIZED POSITIONS/FULL-TIME EQUIVALENT (FTE)</b>					
Regular	106 / 106	0 / 0	0 / 0	0 / 0	0 / 0

<sup>1</sup> Only reflects the Public Safety Program Area of Land Development Services.

<sup>2</sup> As part of the FY 2023 Adopted Budget Plan, Agency 31, Land Development Services, was transferred to Fund 40200, Land Development Services. For more information on Land Development Services, please refer to Fund 40200, Land Development Services, in Volume 2.

<sup>3</sup> Does not reflect Fringe Benefit costs, which are shown in Agency 89, Employee Benefits, as well as indirect costs and other operational costs such as space and utilities.