



Region 1

At-A-Glance

(Human Services)

POPULATION



260,168

An estimated 260,168 people live in this region.

FOREIGN-BORN



28.6%

of the population (74,424 persons) living in this region are foreign-born.

LANGUAGE

14.5% of the total population in this region (age 5 and over) speak English less than very well.



39.0% of the total population in this region (age 5 and over) speaks a language other than English at home.

Population includes native and foreign-born persons.

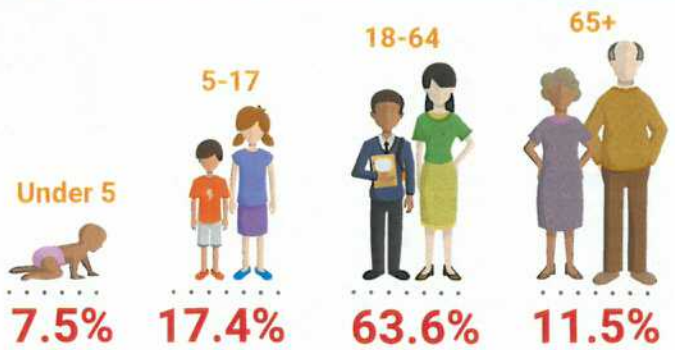
RACE & ETHNICITY



59.5% White alone*
17.4% Black alone*
12.5% Asian alone*
10.7% Other**
20.3% Hispanic

*Population of those who identify with one race.
 ** Includes American Indian, Pacific Islander, Some Other Race Alone and Two or More Races.

AGE



FAMILY COMPOSITION



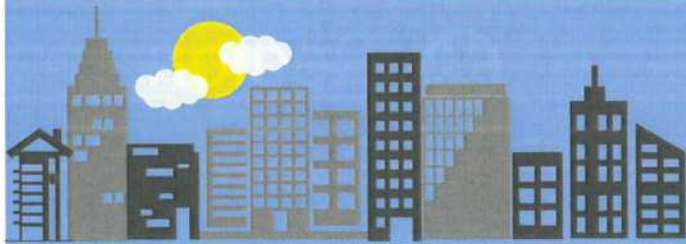
HOUSES OF WORSHIP



Sources: U.S. Census Bureau, 2014-2018 American Community Survey, FY 2019 CSP Source Data, and Demographic Reports, 2019, County of Fairfax, VA. Data does not include the City of Fairfax. Prepared by Community Impact Unit, Fairfax County Department of Neighborhood and Community Services; January 2020.



To obtain this information in an alternative format, please call 703-324-4600, TTY 711.



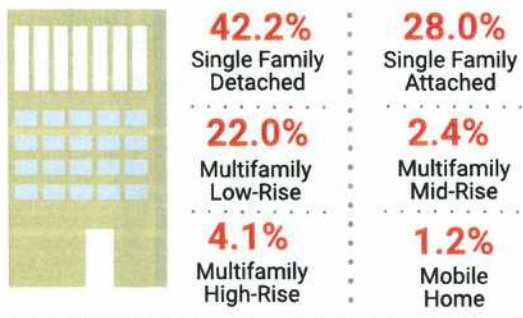
Region 1

At-A-Glance

(Human Services)

HOUSING

Housing Units by Type

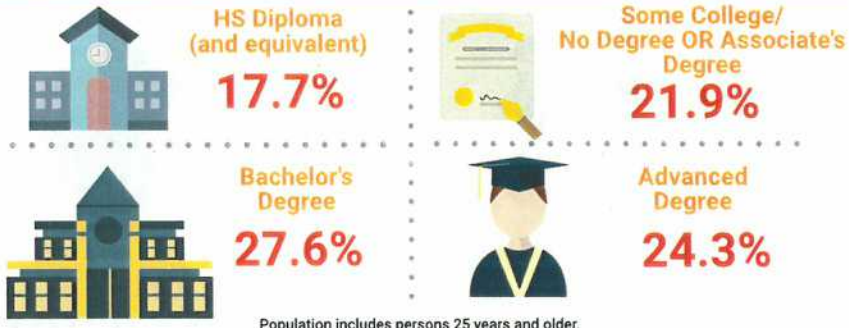


Cost Burdened



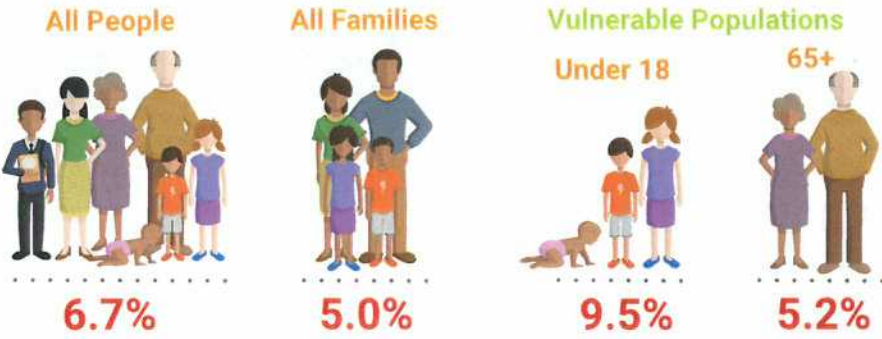
** Percentage of household income spent for mortgage costs or gross rent. According to HUD programs, households spending more than 30% of income for these housing costs are considered to be "cost-burdened."

EDUCATIONAL ATTAINMENT

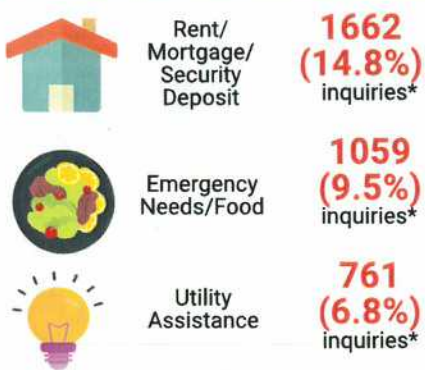


Population includes persons 25 years and older.

POVERTY

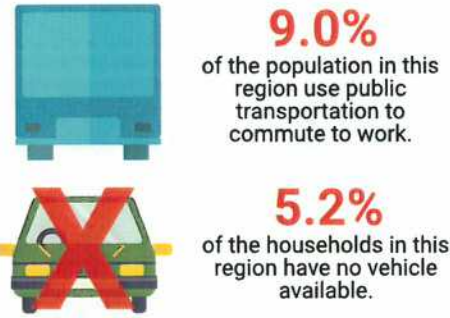


COORDINATED SERVICES PLANNING (CSP) TOP 3 CONTACT TOPICS FOR NEEDS

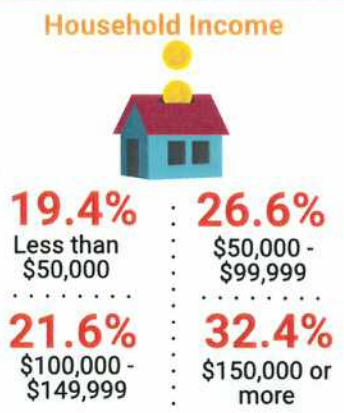


*Number (and percentage) of inquiries for that contact topic in FY 2019.

TRANSPORTATION



INCOME



HEALTHCARE



EMPLOYMENT



INDIVIDUALS WITH DISABILITIES

