



# FAIRFAX COUNTY PARK AUTHORITY



## M E M O R A N D U M

**TO:** Chairman and Members  
Park Authority Board

**VIA:** Kirk W. Kincannon, Executive Director

**FROM:** Cindy Walsh, Director  
Resource Management Division

**DATE:** May 23, 2018

### *Agenda*

**Resource Management Committee  
Wednesday, May 23, 2018 – 5 p.m.  
Boardroom – Herrity Building  
Chairman: Maggie Godbold  
Vice Chair: Linwood Gorham  
Members: Kiel Stone, Timothy Hackman**

1. Scope Approval - Ellick Preserve Grassland Restoration (with presentation) – Action\*
2. Scope Approval – Western Area of the County Natural Resources Management Plan Scope of Work (with presentation) - Action\*
3. FY 2019 Deer Management Plan (with presentation) – Information\*

\*Enclosures



If accommodations and/or alternative formats are needed, please call (703) 324-8563. TTY (703) 803-3354

Board Agenda Item  
June 6, 2018

## **ACTION (with Presentation)**

### Scope Approval – Elklick Preserve Grassland Restoration (Sully District)

#### ISSUE:

Approval of the project scope to plan and implement an ecosystem restoration project at Elklick Preserve.

#### RECOMMENDATION:

The Park Authority Director recommends approval of the project scope to plan and implement an ecosystem restoration project at Elklick Preserve to restore the native vegetation community, habitat for birds of conservation concern, and rare plant species.

#### TIMING:

Board approval of the project scope is requested on June 6, 2018.

#### BACKGROUND:

The Helping Our Land Heal Program was developed based on the successful work from the Ellanor C. Lawrence Forest Management Pilot Project. The scope complies with the Elklick Preserve Conceptual Development and Sully Woodlands Regional Master Plans. It also works toward achieving the following Recommended Actions in the agency-wide Natural Resource Management Plan.

- Recommended Action 16 – Manage natural resources adaptively and holistically on a landscape scale with the ultimate goal of having naturally regenerating native plant systems and healthy native wildlife populations.
- Recommended Action 17 – Control overabundant and invasive species that negatively impact natural resources to include, but not limited to, white-tailed deer, non-native invasive species, resident Canada geese, feral animals, and forest pests.
- Recommended Action 18 – Ensure the health of existing forested areas. Where possible ensure native biodiversity and sustainable regeneration; elsewhere restore to the highest ecosystem function practicable.
- Recommended Action 19 – Enhance connectivity of parkland to provide natural corridors that allow for the movement of populations over time and preserve ecosystem function and biodiversity.

Board Agenda Item  
June 6, 2018

The goals of the project are to restore native grassland plant communities, habitat for birds of conservation concern, and three species of rare plants on approximately 56 acres of Elklick Preserve. The project will remove existing stands of invasive autumn olive (*Eleagnus umbellata*) and eastern red cedar (*Juniperus virginiana*) and replant with target herbaceous community species to restore the Piedmont Prairie (CEGL 006572) community type. It will do this in way that will enhance the breeding, migrating, and wintering habitat for the bird species located in Table 1.

Table 1.

Common Name	Scientific Name	Conservation Status
Grasshopper sparrow	<i>Ammodramus savannarum</i>	NOVA WAP Tier IV
Field sparrow	<i>Spizella pusilla</i>	NOVA WAP Tier IV
Eastern meadowlark	<i>Sturnella magna</i>	NOVA WAP Tier IV
Prairie warbler	<i>Setophaga discolor</i>	USFWS BCC Listed; PIF Listed
-Virginia Department of Game and Inland Fisheries Wildlife Action Plan's Northern Virginia Region (NOVA WAP) -U.S. Fish and Wildlife Service Birds of Conservation Concern (USFWS BCC) -Partners in Flight Watch List (PIF)		

Finally, three rare plant species will be re-introduced to the herbaceous plant community that include purple milkweed (*Asclepias purpurescens*), stiff goldenrod (*Solidago rigida*), and Torrey's mountain-mint (*Pycnanthemum torreyi*). The project may also re-introduce hyssoleaf hedgenettle (*Stachys aspera*) and bluntleaf sandwort (*Moehringia lateriflora*).

The specific area proposed for restoration is identified on the Elklick Preserve Grassland Restoration Map, enclosed as Attachment 2. Any surplus project funds will be returned for reallocation to other projects.

The project will start the first quarter of fiscal year 2019 with an approximate five year duration.

**FISCAL IMPACT:**

Based on the scope cost estimate, funding in the amount of \$370,000 is necessary to conduct the project (Attachment 1). Funding is available in the amount of \$535,000 in PR-000093, Land Acquisition and Stewardship-2012, Natural Capital Renovation/Natural Resource Management in Fund 30400, Park Bond Construction Fund.

**ENCLOSED DOCUMENTS:**

Attachment 1: Scope Cost Estimate for Elklick Preserve Grassland Restoration Project

Board Agenda Item  
June 6, 2018

Attachment 2: Elklick Preserve Grassland Restoration Map

Attachment 3: Elklick Preserve Grassland Restoration Project Existing and Desired  
Conditions

STAFF:

Kirk Kincannon, Director

Sara Baldwin, Deputy Director/COO

Aimee Vosper, Deputy Director/CBD

David Bowden, Director, Planning and Development Division

Cindy Walsh, Director, Resource Management Division

Todd Brown, Director, Park Operations Division

Barbara Nugent, Director, Park Services Division

**Eiklick Preserve Grassland Restoration Project  
Scope Cost Estimate**

Project Administration	\$37,000
Site Design and Planning	\$33,000
Archaeology	\$34,000
Implementation, Monitoring, and Close-out	\$266,000
<b>Total</b>	<b>\$370,000</b>



Elklick Preserve  
Fairfax County Park Authority



**Legend**

- Grassland restoration
- FCPA Parks

**Elklick Preserve Grassland Restoration Project**  
**Proposed Restoration Existing and Desired Conditions**

Existing Condition – Autumn olive and cedar trees replacing native grasses



Desired Condition – Piedmont Prairie (CEGL 006572), high quality bird habitat, and rare plants





# Grassland Restoration Elklick Preserve

Resource Management Committee Meeting

May 23, 2018

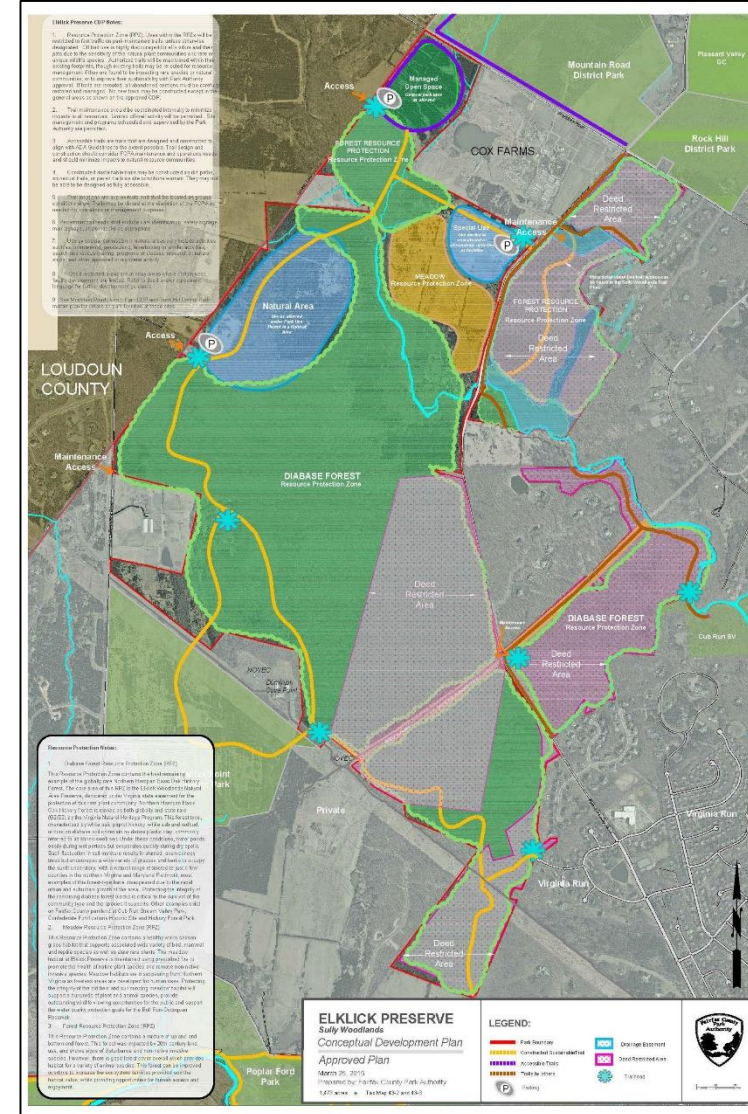


# Background

- Sully Regional Master Plan
- Ellick Preserve Conceptual Development Plan
  - Meadow Resource Protection Zone
  - Special Use – limited to education, stewardship, or facilities



**APPROVED**  
September 27, 2006



# Grassland Restoration

- Attempted to restore with maintenance-level activities
- Limited landscape-scale habitat
  - Piedmont Prairie (CEGL006110)
- Create large, contiguous blocks of habitat





Elklick Preserve  
Fairfax County Park Authority

0 250 500 1,000 Feet



## Legend

-  Grassland restoration
-  FCPA Parks

# Existing and Desired Conditions

**Existing Condition**



**Desired Condition**



# Restore Bird Habitat

- Four bird species
  - Grasshopper sparrow
  - Field Sparrow
  - Eastern meadowlark
  - Prairie warbler
- State conservation
- Federal/national conservation



# Rare Plant Reintroduction

- Three rare plant species
  - Purple milkweed (*Asclepias purpurescens*)
  - Stiff goldenrod (*Solidago rigida*)
  - Torrey's mountain-mint (*Pycnanthemum torreyi*)
- State conservation
- Global conservation



# HOW WE TREAT THE LAND HAS LASTING IMPACTS



Questions ?

Board Agenda Item  
June 6, 2018

**ACTION (with Presentation)**

Scope Approval – Western Area Natural Resources Management Plan Scope of Work (Sully, Dranesville, Hunter Mill, Braddock, and Springfield Districts)

ISSUE:

The Park Authority Director recommends approval of the project scope to begin work on the Western Area Natural Resources Management Plan.

RECOMMENDATION:

The Park Authority will complete a Natural Resources Management Plan (NRMP) and associated surveys for parks in the western part of Fairfax County. The NRMP that will be developed will consider options and provide recommended implementation actions for ecological restoration. The scope of the project will include all parks depicted on the map as Attachment 2 and listed by name in Attachment 3. The proposed NRMP is one of four that will be completed to cover all parks in the county. The project will be managed by Natural Resource Branch (NRB) staff.

TIMING:

The period of performance will be 30 months. The completion schedule assumes a July 1, 2018 start date.

Project Year 1 (FY19)				
Tasks	1 <sup>st</sup> Qtr	2 <sup>nd</sup> Qtr	3 <sup>rd</sup> Qtr	4 <sup>th</sup> Qtr
1. Project Management	Start	Ongoing	Ongoing	Ongoing
2. Outline				Complete
3. 50% Draft NRMP				
4. 90% Draft NRMP				
5. 100% Draft NRMP				
6. Planning-level Surveys				Start

Project Year 2 (FY20)				
Tasks	1 <sup>st</sup> Qtr	2 <sup>nd</sup> Qtr	3 <sup>rd</sup> Qtr	4 <sup>th</sup> Qtr
1. Project Management	Ongoing	Ongoing	Ongoing	Ongoing
2. Outline				
3. 50% Draft NRMP			Complete	
4. 90% Draft NRMP				
5. 100% Draft NRMP				
6. Planning-level Surveys	Ongoing	Ongoing	Ongoing	Ongoing

Board Agenda Item  
June 6, 2018

Project Year 3 (FY21)				
Tasks	1 <sup>st</sup> Qtr	2 <sup>nd</sup> Qtr	3 <sup>rd</sup> Qtr	4 <sup>th</sup> Qtr
1. Project Management	Ongoing	Complete		
2. Outline				
3. 50% Draft NRMP				
4. 90% Draft NRMP	Complete			
5. 100% Draft NRMP		Complete		
6. Planning-level Surveys	Ongoing	Complete		

**BACKGROUND:**

*Goals*

The project will be conducted in accordance with FCPA Policy 201, Natural Resources. It will also help fulfill the following Recommended Actions in the agency-wide Natural Resource Management Plan.

- Recommended Action 1 – Conduct natural resource inventories of vegetative communities, rare and significant species, habitats and ecological features such as wetlands and their contributing landscapes to identify, map, and monitor biodiversity.
- Recommended Action 2 – Assess the ecological significance of natural resources on parkland according to federal and state protection status, countywide occurrence, ecological function, ecosystem serves and sensitivity to disturbance, and incorporate these assessments into strategic and long-range planning, general management planning, and operational planning.
- Recommended Action 3 – Designate Resource Protection Zones and develop a map of parkland defining these areas in which land disturbance shall be limited and access regulated based on the needs of the resources present.
- Recommended Action 5 – Ensure that natural resource protection is integrated into all aspects of the Park Authority’s practices to include land acquisition, park planning, development, management, maintenance, and interpretation.
- Recommended Action 6 – Create site-specific or resource-specific Natural Resource Management Plans and/or Natural Resource Action Plans as appropriate to guide natural resource management and protection and make these plans available to staff and the public.
- Recommended Action 10 – Protect water resources from impacts of urbanization and development such as stormwater runoff and excessive flows.
- Recommended Action 16 – Manage natural resources adaptively and holistically on a landscape scale with the ultimate goal of having naturally regenerating native plant systems and healthy native wildlife populations.
- Recommended Action 24 – Partner with diverse groups to conduct resource inventories, formulate plans and manage resources.



Board Agenda Item  
June 6, 2018

- Recommended Action 26 – Participate in and support regional natural resource management planning and management efforts to better identify gaps and opportunities in natural resource protection and management.

It will produce a plan that will be used to manage, restore, and protect the natural resources of the parks identified in this scope. The NRMP will inform future park Master Plans.

*Objectives*

The following project objectives will achieve the goals identified above.

1. Manage project to meet goals.
2. Conduct planning-level ecological surveys to inform NRMP.
3. Prepare NRMP.
4. Provide recommendations for acquisitions to meet plan objectives.

*Tasks*

The NRB will manage contractors to achieve project objectives. Project tasks will be performed to complete deliverables according to specifications outlined in this document.

1. Manage the project to include coordination with sites, contractor selection and management, quality assurance, stakeholders, and other factors.
2. Coordinate FCPA comments for NRMP outline to contractor.
3. Coordinate FCPA comments for 50% draft NRMP and provide to contractor.
4. Coordinate FCPA comments for 90% draft NRMP and provide to contractor.
5. Coordinate contractor(s) and staff for planning-level ecological survey(s) and ensure information is included in NRMP.
6. Consult with targeted stakeholders, such as the Virginia Department of Conservation and Recreation, to ensure technical rigor.

*Specifications*

- The NRMP will be compliant with DCR NAP standards.
- The NRMP will incorporate results from planning-level ecological surveys and existing, suitable FCPA data.
- The NRMP will use natural vegetation community data to delineate management units.
- The NRMP will identify restoration, enhancement, and/or maintenance activities necessary for each management unit, based on existing resources.
- The NRMP will provide cost estimates per activity for each management unit.
- The NRMP will include recommended Resource Protection Zones (RPZ) and potential Natural Area Preserve (NAP) designation, or similar, for eligible management units.

Board Agenda Item  
June 6, 2018

- The NRMP will identify target, or desired, natural community type(s) for management units identified for restoration.
- The NRMP will recommend areas of high conservation and protection value for potential acquisition.

*Project Deliverables*

1. Quarterly progress reports submitted by the NRB.
2. A completed NRMP that will include recommendations for RPZs and NAP, as applicable; and identified management units in need of ecological restoration.
3. Final report and/or geographic data for each planning-level ecological survey.

FISCAL IMPACT:

Based on the scope cost estimate, funding in the amount of \$290,000 is necessary to conduct the project (Attachment 1). Funding in the amount of \$825,000 is currently available in PR-000093, Land Acquisition and Stewardship-2012, Natural Capital Renovation/Natural Resource Management in Fund 30400, Park Bond Construction Fund.

ENCLOSED DOCUMENTS:

Attachment 1: Scope Cost Estimate for Western Area Natural Resources Management Plan

Attachment 2: Western Area Natural Resources Management Plan Scope Map

Attachment 3: Western Area Natural Resources Management Plan List of Parks

STAFF:

Kirk W. Kincannon, Executive Director

Aimee Vosper, Deputy Director/CBD

Sara Baldwin, Deputy Director/COO

Cindy Walsh, Director, Resource Management Division

Janet Burns, Director, Administration Division

Todd Brown, Director, Park Operations Division

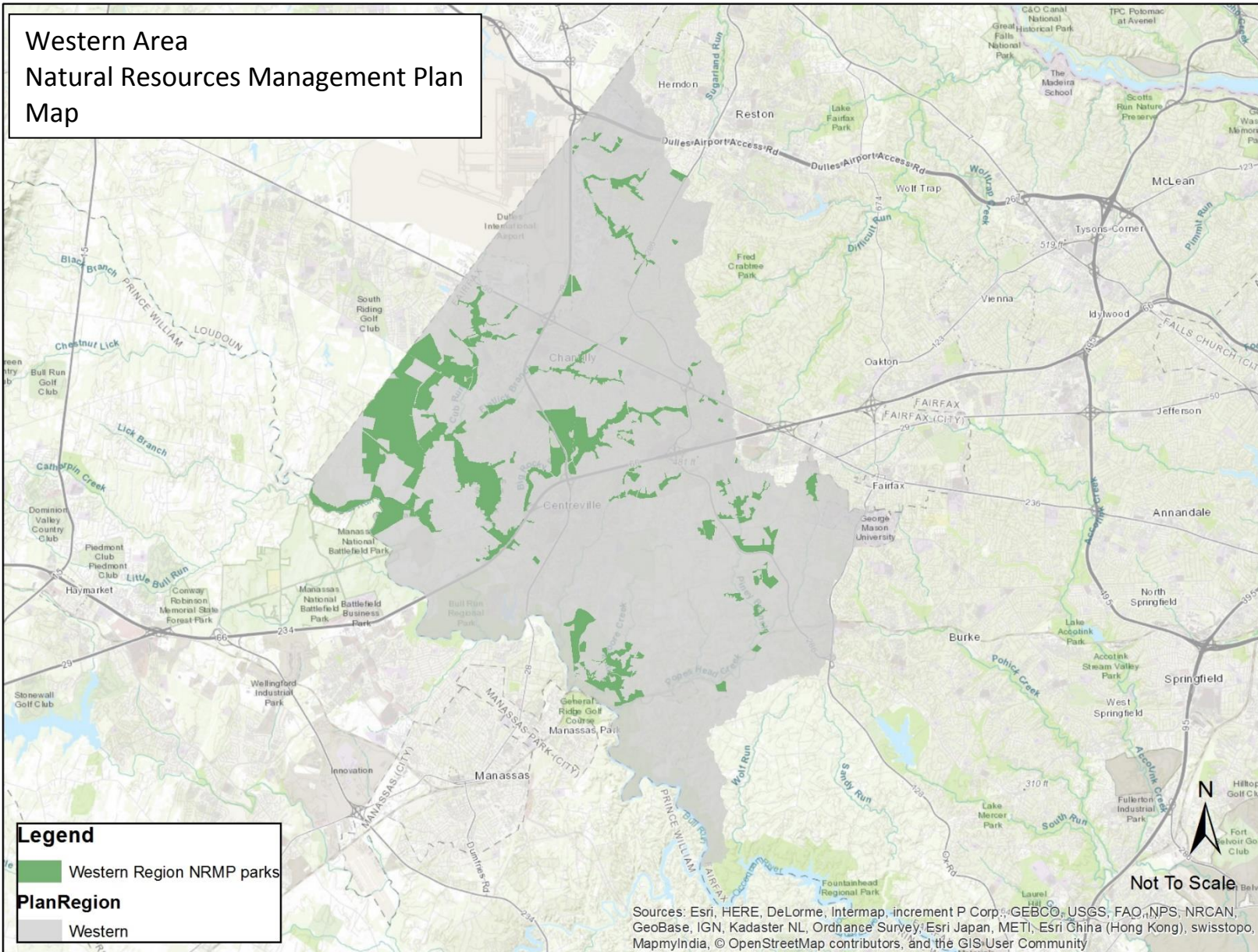
Judy Pedersen, Public Information Officer

David Bowden, Director, Planning and Development Division

John Stokely, Manager, Natural Resources Branch

**Western Area Natural Resources Management Plan  
Scope Cost Estimate**

Project Administration	\$29,000
Planning-level Ecological Surveys	\$41,000
Vegetation Surveys	\$70,000
Natural Resources Management Plan	\$150,000
<b>Total</b>	<b>\$290,000</b>



**Western Area Natural Resources Management Plan Project**

**List of Parks**

DULLES CORNER PARK	PATRIOT PARK NORTH
MOUNTAIN ROAD DISTRICT PARK	ROCK HILL DISTRICT PARK
CUB RUN RECENTER	PINEY BRANCH STREAM VALLEY PARK
LANE'S MILL PARK	ROCKY RUN STREAM VALLEY PARK
HICKORY FOREST PARK	ELLANOR C LAWRENCE PARK
CHANTILLY PARK	ELKLICK PRESERVE
WESTFIELDS SCHOOL SITE	HALIFAX POINT DISTRICT PARK
POPLAR TREE PARK	RICHARD W. JONES
CONFEDERATE FORTIFICATIONS HISTORIC SITE	FRANKLIN OAKS PARK
FAIR WOODS PARK	SULLY HISTORIC SITE
CHALET WOODS PARK	BRENTWOOD PARK
STONE CROSSING PARK	HORSEPEN RUN STREAM VALLEY PARK
GREENBRIAR COMMONS PARK	POPES HEAD PARK
CENTRE RIDGE PARK	FRYING PAN STREAM VALLEY PARK
OX HILL BATTLEFIELD PARK	FAIR RIDGE PARK
FLATLICK STREAM VALLEY PARK	ARROWHEAD PARK
CUB RUN STREAM VALLEY PARK	POPES HEAD STREAM VALLEY PARK
WILLOW POND PARK	FAIR OAKS PARK
PLEASANT HILL PARK	FLATLICK SHOP
CHAPEL ROAD PARK	FOX VALLEY PARK
FROG BRANCH STREAM VALLEY PARK	STRATTON WOODS PARK
PATRIOT PARK	FRYING PAN FARM PARK
POPLAR FORD PARK	MERRYBROOK RUN STREAM VALLEY PARK
CENTRE RIDGE NORTH PARK	DIXIE HILL PARK
GREENBRIAR PARK	ARROWBROOK PARK
JOHNNY MOORE STREAM VALLEY PARK	DULLES ROCK HILL PARK
FAIRFAX VILLA PARK	

# Natural Resources Management

## Plan

### Western Area

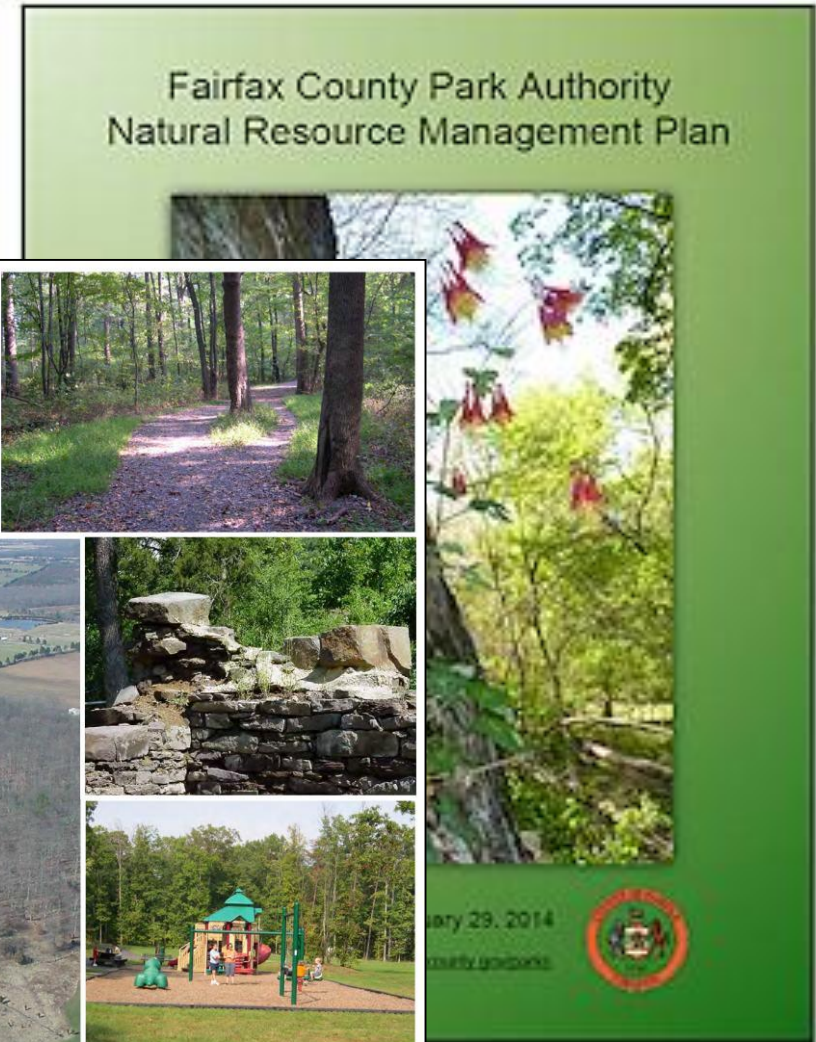
Resource Management Committee Meeting

May 23, 2018



# Background

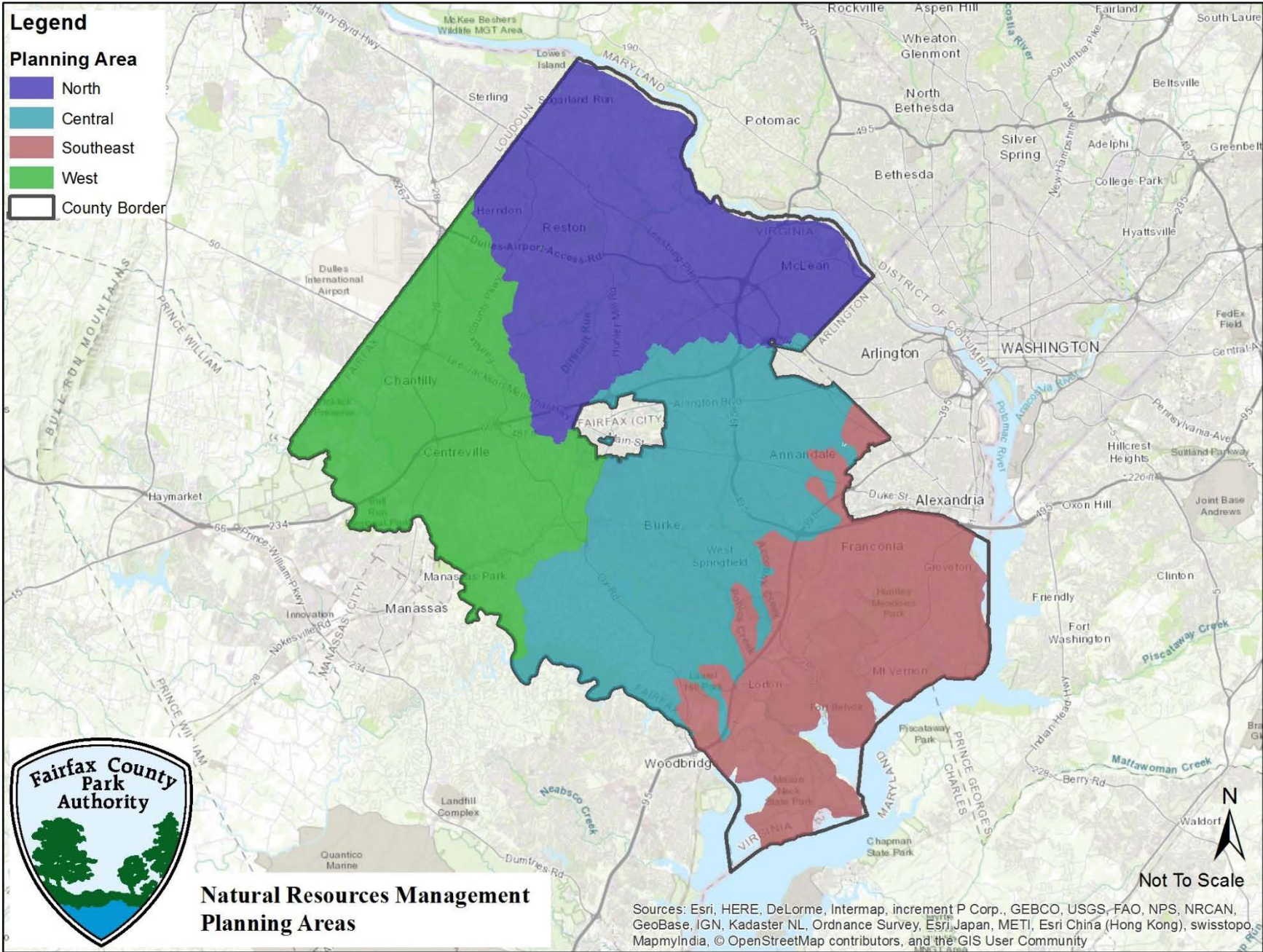
- Nine Recommended Actions
- Adapts Sully Regional Master Plan Concept
- Apply Regional Natural Resources Management Planning County-wide



SULLY WOODLANDS  
REGIONAL MASTER PLAN  
FAIRFAX COUNTY PARK AUTHORITY

**APPROVED**  
September 27, 2006

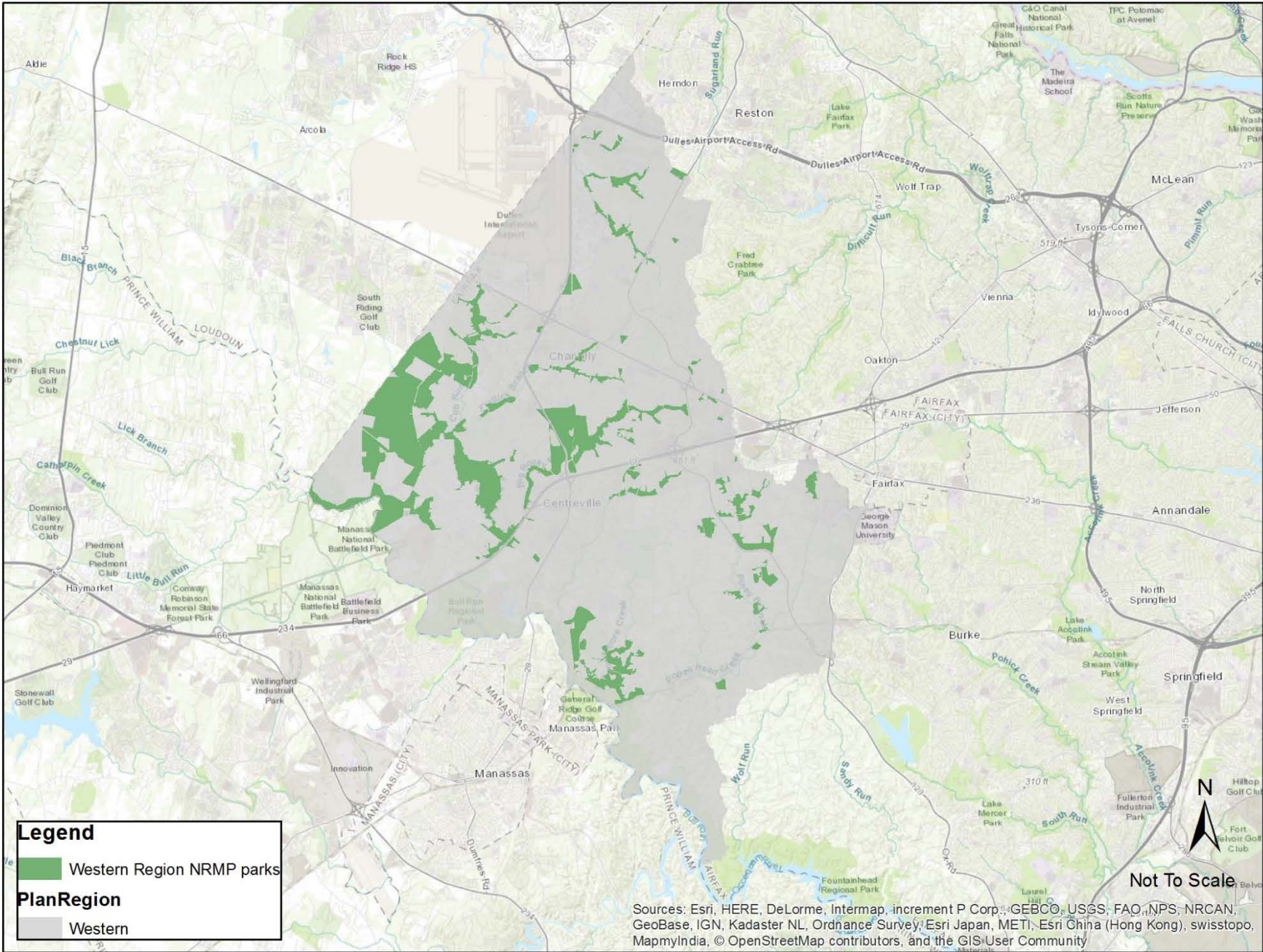




**Natural Resources Management Planning Areas**

Sources: Esri, HERE, DeLorme, Intermap, increment P Corp., GEBCO, USGS, FAO, NPS, NRCAN, GeoBase, IGN, Kadaster NL, Ordnance Survey, Esri Japan, METI, Esri China (Hong Kong), swisstopo, MapmyIndia, © OpenStreetMap contributors, and the GIS User Community





# Sully District Parks

MOUNTAIN ROAD DISTRICT PARK

CUB RUN RECENTER

LANE'S MILL PARK

HICKORY FOREST PARK

CHANTILLY PARK

WESTFIELDS SCHOOL SITE

POPLAR TREE PARK

FAIR WOODS PARK

CHALET WOODS PARK

STONE CROSSING PARK

CENTRE RIDGE PARK

FLATLICK STREAM VALLEY PARK

CUB RUN STREAM VALLEY PARK

WILLOW POND PARK

PLEASANT HILL PARK

FROG BRANCH STREAM VALLEY PARK

POPLAR FORD PARK

CENTRE RIDGE NORTH PARK

ROCK HILL DISTRICT PARK

ROCKY RUN STREAM VALLEY PARK

ELLANOR C LAWRENCE PARK

ELKCLICK PRESERVE

HALIFAX POINT DISTRICT PARK

RICHARD W. JONES

SULLY HISTORIC SITE

HORSEPEN RUN STREAM VALLEY PARK

FRYING PAN STREAM VALLEY PARK

ARROWHEAD PARK

FAIR OAKS PARK

FLATLICK SHOP

FOX VALLEY PARK



# Springfield District Parks

CONFEDERATE FORTIFICATIONS HISTORIC SITE

GREENBRIAR COMMONS PARK

OX HILL BATTLEFIELD PARK

WILLOW POND PARK

CHAPEL ROAD PARK

PATRIOT PARK

GREENBRIAR PARK

JOHNNY MOORE STREAM VALLEY PARK

PATRIOT PARK NORTH

PINEY BRANCH STREAM VALLEY PARK

ROCKY RUN STREAM VALLEY PARK

POPES HEAD PARK

FAIR RIDGE PARK

POPES HEAD STREAM VALLEY PARK



# Hunter Mill District Parks

FRANKLIN OAKS PARK

HORSEPEN RUN STREAM VALLEY PARK

FRYING PAN STREAM VALLEY PARK

STRATTON WOODS PARK

FRYING PAN FARM PARK



# Dranesville District Parks

DULLES CORNER PARK

FRYING PAN STREAM VALLEY PARK

MERRYBROOK RUN STREAM VALLEY PARK

ARROWBROOK PARK

DULLES ROCK HILL PARK



# Braddock District Parks

FAIRFAX VILLA PARK

PINEY BRANCH STREAM VALLEY PARK

BRENTWOOD PARK

DIXIE HILL PARK



# HOW WE TREAT THE LAND HAS LASTING IMPACTS



Questions?

Board Agenda Item  
June 6, 2018

**INFORMATION** (with presentation)

FY 2019 Deer Management Program

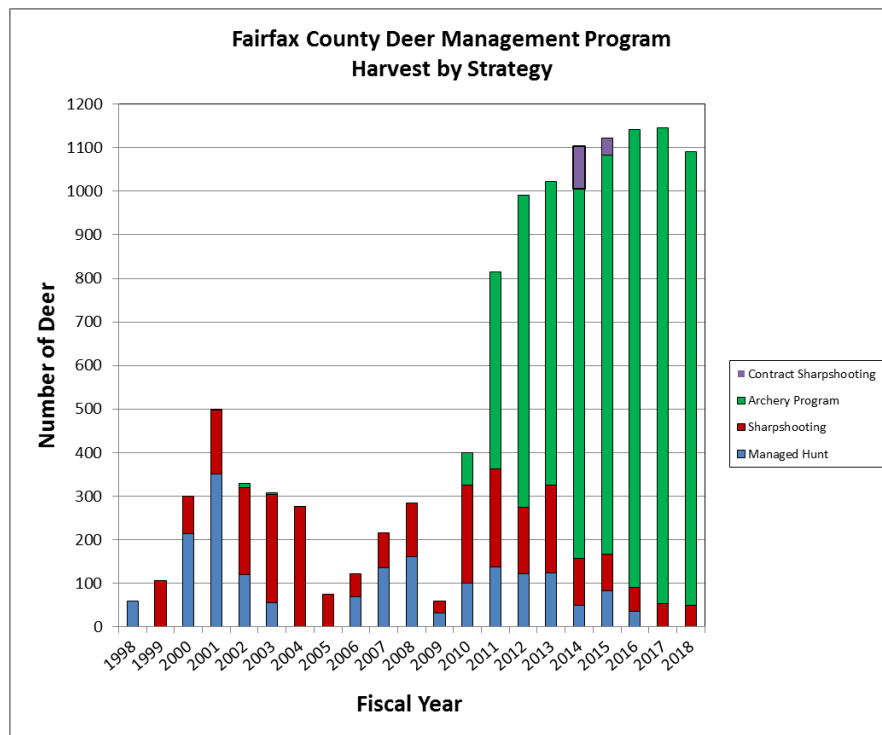
The Park Authority has been participating in the Fairfax County Deer Management Program since its inception in 1998. The program includes approximately 90 FCPA parks and three treatment methods (archery, managed shotgun hunts, and sharpshooting).

Each year the Park Authority Board receives information about the deer management activities planned for the coming fiscal year, as overseen and implemented by the Fairfax County Police Department.

Summary for FY18 (2017-2018)

Attachment 1 summarizes deer harvest results by park and treatment method for the previous season of the Fairfax County Deer Management Program. The three approved treatment methods include: archery hunting, managed shotgun hunts, and police sharpshooting. There are currently no non-lethal methods approved for deer population control in Virginia.

Deer herd reduction activities took place at 94 FCPA parks with 860 deer removed (1,091 in total including non-FCPA properties).





Board Agenda Item  
June 6, 2018

Archery continues to be the most cost-effective and successful method of herd management, representing 95% of the total program harvest last season. Last season, 588 volunteers participated in the archery program donating 43,688 hours of hunting and scouting hours, for an average of 74 hours per volunteer. These volunteers were organized into 18 hunt clusters and were individually screened and qualified to participate by the Fairfax County Police Department. Fairfax County insures these volunteers under its general liability policy.

Managed shotgun hunts were not held within the Sully Woodlands park cluster in FY18.

Sharpshooting was conducted at eight parks: Annandale, Chapel Road, Clermont/Loftridge, Greendale Golf Course, Green Spring Gardens, Huntley Meadows, and White Oaks.

Planned Activities for FY19 (2018-2019)

Attachment 2 summarizes the parks proposed for the upcoming season of the Deer Management Program, organized by supervisory district.

Parks are recommended for the program based on one or more of the following factors:

1. Public safety concerns related to deer-vehicle collisions
2. Residential complaints of deer damage near the park
3. High estimated deer population in the park (> 20 deer/sq. mile)
4. Measurable impact to park vegetation
5. High natural resource value of the park
6. At the request of the park manager

All approved hunting and parking areas will be mapped in a Geographic Information System (GIS) by July and made available online to the public as a web map linked from the Police Department's Deer Management Program website. This data is also made accessible to all county employees within the SDE data system.

The only proposed addition to the archery program is Chapel Road Park, in the Springfield District. Sharpshooting has been conducted at this park over the past three seasons with low yield; archery may be a more successful management method due to the ability to exert hunting pressure over a longer period of time.

Board Agenda Item  
June 6, 2018

Haycock Longfellow Park is proposed to be added to the sharpshooting program as a response to community concerns about overabundant deer. Frying Pan Farm will also be evaluated for sharpshooting following a deer density survey in August 2018. Frying Pan Farm received sharpshooting from FY15-FY17.

Three parks will be removed from the sharpshooting program in FY19 due to low harvest yields: Greendale Golf Course, Green Spring Gardens, and White Oaks.

Sharpshooting will not be conducted at Bren Mar Park/Turkeycock Run Stream Valley in FY19. Archery and sharpshooting were conducted in these parks in FY16-FY17, respectively; they were listed, but not included, in the FY18 program. Staff are continuing to monitor the deer herd at Bren Mar Park/Turkeycock Run Stream Valley to inform management decisions in future years.

Managed shotgun hunts will be scheduled again in Fairfax County Parks during the upcoming season at the recommendation of the Police Department, after a two-season hiatus of using this method. Changes implemented include the use of slugs only (no buckshot or muzzle-loading) and no lead shot (only non-toxic ammunition will be permitted). At Ellick Preserve, Rock Hill District Park, and Mountain Road District Park, a combination of archery and managed hunting will be implemented. At Richard W. Jones Park (Pleasant Valley Golf Course), only managed hunts will be conducted. Managed hunts have been proposed for the following three dates when the parks will be closed:

- Wednesday, November 28, 2018
- Wednesday, January 9, 2019
- Wednesday, February 6, 2019

Notification letters will be mailed to property owners adjacent to approved park sites in July 2018. Over 20,000 letters were mailed in FY18. Two Public Information Meetings will also be held in August 2018:

FY19 Deer Management Program Public Information Meetings

1. Date: August 7, 2018  
Time: 7:00 p.m. to 8:00 p.m.  
Main Fairfax County Government Center  
12000 Government Center Pkwy. Fairfax, VA 22035  
Conference Room: 2/3

Board Agenda Item  
June 6, 2018

2. Date: August 16, 2018  
Time: 7:00 p.m. to 8:00 p.m.  
Mount Vernon District Police Station  
2511 Parkers Lane Alexandria, VA 22306  
Room: Community Room

### Data Collection Efforts

Data collection efforts in FY19 focus on the following components of the program:

- 1) Evaluating the browse impact of deer on native vegetation
- 2) Conducting deer density estimates with game camera surveys
- 3) Collecting herd health data at check stations over the course of the season

#### *Browse Impact Surveys*

Approximately 500 permanent vegetation plots have been established by park staff in 61 parks included in the Deer Management Program. One-fifth of the plots will be surveyed each year, for a return interval of every five years. Impacts to native woody vegetation are measured at each plot location.

#### *Camera Surveys*

In August 2017 camera surveys were conducted in 21 parks. Cameras in Elklick Preserve, Rock Hill District Park, Mountain Road, Poplar Ford, and Hickory Forest Park were removed mid-survey, due to a bear habitually feeding at the baited camera stations. There is no plan to resurvey these parks at this time. An alternate survey method may need to be implemented in the future to assess the deer population in these parks due to reports of annual bear activity in the Sully Woodlands area.

Camera surveys are planned for 23 parks in August 2018.

#### *Herd Health Data*

Herd health data has been collected periodically during the program's history, but not in several years. The Fairfax County Wildlife Management Specialist will collect herd health data from the archery program and managed hunts at deer check stations on select dates throughout the season. Data collected at will include: deer age using jawbone, dressed scale weight, antler measurements, check of hooves (sloughing/splitting), and lactation status. These additional data will also be collected during night-time sharpshooting operations when feasible. Staff will coordinate with

Board Agenda Item  
June 6, 2018

personnel from the Health Department's Disease Carrying Insects Program to collect ticks from harvested deer (dependent on scheduling and staff availability).

Chronic Wasting Disease (CWD) is an emerging, contagious neurological disease affecting white-tailed deer, mule deer, moose and elk. The disease was first confirmed in white-tailed deer in Virginia in Frederick County in 2009. A CWD Containment Area has been established by the Virginia Department of Game and Inland Fisheries (VDGIF) that includes Shenandoah, Warren, Frederick and Clark Counties. Surveillance for CWD is being conducted by the VDGIF within the established containment area. The VDGIF sampled over 1,500 deer within the containment area in 2017-2018, which yielded 16 new CWD-positive deer. As of February 2018 Virginia has diagnosed 38 CWD-positive white-tailed deer. The Fairfax County Wildlife Management Specialist will continue to work closely with the VDGIF to determine if any actions need to be taken in Fairfax County relative to this disease in the future.

FISCAL IMPACT:

The Police Department dedicates time of one Wildlife Management Specialist (Katherine Edwards, Ph.D.) and one Animal Protection Police Supervisor (Sergeant Earit Powell), with one limited term Assistant Wildlife Biologist position and at least one seasonal assistant supporting field tasks during the hunt season. Additional overtime is authorized as needed for Police Department personnel to provide security during night-time sharpshooting operations and during daytime managed hunts.

The Park Authority dedicates 1/3 time of one Ecologist III (Kristen Sinclair) to support the Deer Management Program.

ENCLOSED DOCUMENTS:

Attachment 1 - FY 2018 Deer Harvest Totals for Fairfax County Parks.

Attachment 2 - FY 2019 Proposed Deer Management Sites by Supervisory District.

STAFF:

Kirk W. Kincannon, Executive Director

Aimee Vosper, Deputy Director/CBD

Sara Baldwin, Deputy Director/COO

Cindy Walsh, Director, Resource Management Division

Kristen Sinclair, Senior Natural Resource Specialist, Resource Management Division

Barbara Nugent, Director, Park Services Division

Todd Brown, Director, Park Operations Division

Judy Pedersen, Public Information Officer

**Fairfax County Deer Management Program  
FY 2018 Deer Harvest Totals**

<b>Archery</b>	
<b>Cluster Name</b>	<b>Number of Deer Harvested</b>
<b>1 - Accotink Stream Valley Cluster</b>	<b>39</b>
Accotink Stream Valley Park	20
Brookfield Park	0
Carrleigh Parkway	0
Eakin Community Park	6
Eakin Park (Mantua Section)	11
Hunter Village Park	0
Sally Ormsby Park	2
<b>2 – Bull Run Marina Cluster</b>	<b>64</b>
Bull Run Marina*	27
Hemlock Overlook*	37
<b>3- Bull Run Regional Park</b>	<b>26</b>
Bull Run Regional Park*	26
<b>4 - Clifton Cluster</b>	<b>64</b>
Bull Run Regional Park South*	18
Confederate Fortifications	10
Johnny Moore Stream Valley	36
<b>5 - Colvin Run Cluster</b>	<b>40</b>
Colvin Run Mill Park	3
Colvin Run Stream Valley	9
Difficult Run Stream Valley (Colvin)	10
Lake Fairfax Park	15
Wolftrap Stream Valley	3
<b>6 - Cub Run Cluster</b>	<b>81</b>
Cub Run Stream Valley	27
Ellanor C. Lawrence Park	36
Flatlick Stream Valley	8
Rocky Run Stream Valley	10
<b>7 - Elklick Cluster</b>	<b>82</b>
Elklick Preserve (includes Halifax Point District Park)	35
Hickory Forest Park	1
Horsepen Run Stream Valley	13
Merrybrook Run Stream Valley	4
Mountain Road Park	7
Poplar Ford Park	8
Rock Hill District Park	5
Sully Historic Site	9

## Archery

Cluster Name	Number of Deer Harvested
<b>8- Fairfax Station Cluster</b>	<b>38</b>
Lincoln Lewis-Vannoy Park	7
Patriot Park	6
Piney Branch Stream Valley	12
Popes Head Park	13
Rocky Run Stream Valley (Portion)	0
Willow Pond	0
<b>9 - Fountainhead Cluster</b>	<b>27</b>
Fountainhead Regional Park*	19
Sandy Run Regional Park*	8
<b>10 - Great Falls Cluster</b>	<b>57</b>
Hickory Run School Site**	2
Langley Oaks Park	6
Lexington Estates Park	5
Pimmit Run Stream Valley	19
Riverbend Park	19
Scotts Run Nature Preserve	5
Windemere Park	1
<b>11 - Huntley Meadows</b>	<b>94</b>
Amberleigh Park	1
Deerlick Park	0
Dogue Creek Stream Valley	0
Fairchild Property**	0
Holmes Run Stream Valley	22
Huntley Meadows	34
Island Creek Park	6
John Byers Park	6
Lillian Carey Park	5
Little Hunting Creek	0
Mason District Park	3
Mount Vernon District Park	10
Roundtree Park	2
Woodlawn Park	5
<b>12 - Lake Accotink Cluster</b>	<b>21</b>
Americana Park	0
Lake Accotink	11
Long Branch Stream Valley	3
Wakefield Park	7

## Archery

Cluster Name	Number of Deer Harvested
<b>13 - Laurel Hill Cluster</b>	<b>86</b>
BOS Property Mt. Vernon**	15
Laurel Hill Park & Golf Course	44
Mason Neck West	6
Newington Heights	1
Noman Cole Plant**	4
Old Colchester Park & Preserve	5
Pohick Bay Regional Park*	11
<b>14 - Pohick Stream Valley Cluster</b>	<b>69</b>
Burke Station Park	9
Cherry Run Park	2
Crooked Creek Park	7
Greentree Village Park	0
Huntsman Lake	5
Kings Park West	3
Middle Run Stream Valley Park	4
Pohick Stream Valley	34
Shannon Station Park	4
West Springfield Village Park	1
<b>15 - Reston Cluster</b>	<b>35</b>
Difficult Run Stream Valley (Reston)	3
Foxvale Park	2
Fred Crabtree Park	10
Garnchayne	2
Little Difficult Run Stream Valley	15
Waples Mill Meadow	3
<b>16 - South Run Cluster</b>	<b>30</b>
Brimstone Park	0
Burke Lake	10
Lake Mercer Park	4
Poburn Woods Park	0
Sandy Run Stream Valley	0
South Run District Park	6
South Run Stream Valley	10
<b>17 - Sugarland Run Cluster</b>	<b>132</b>
Folly Lick Stream Valley	21
Shaker Woods Park	4
Sugarland Run Stream Valley	43
TNC Fraser Preserve***	29
Upper Potomac*	35

<b>Archery</b>	
<b>Cluster Name</b>	<b>Number of Deer Harvested</b>
<b>18 - Vienna Cluster</b>	<b>56</b>
Clarks Crossing Park	29
Difficult Run Stream Valley (Vienna)	25
Lahey Lost Valley Park	1
Tamarack Park	1
<b>Archery Total for All Properties</b>	<b>1,041</b>
FCPA Total	810
*NOVA Parks Total	181
**BOS/Other County Property	21
*** TNC Property	29

<b>Police Sharpshooting Operations</b>	
<b>Park</b>	<b>Number of Deer Harvested</b>
Annandale Community Park	6
Chapel Road Park	5
Clermont Park/Loftridge Park	6
Greendale Golf Course	2
Green Spring Gardens	1
Huntley Meadows Park	28
White Oaks Park	2
<b>Sharpshooting Total for All Properties</b>	<b>50</b>

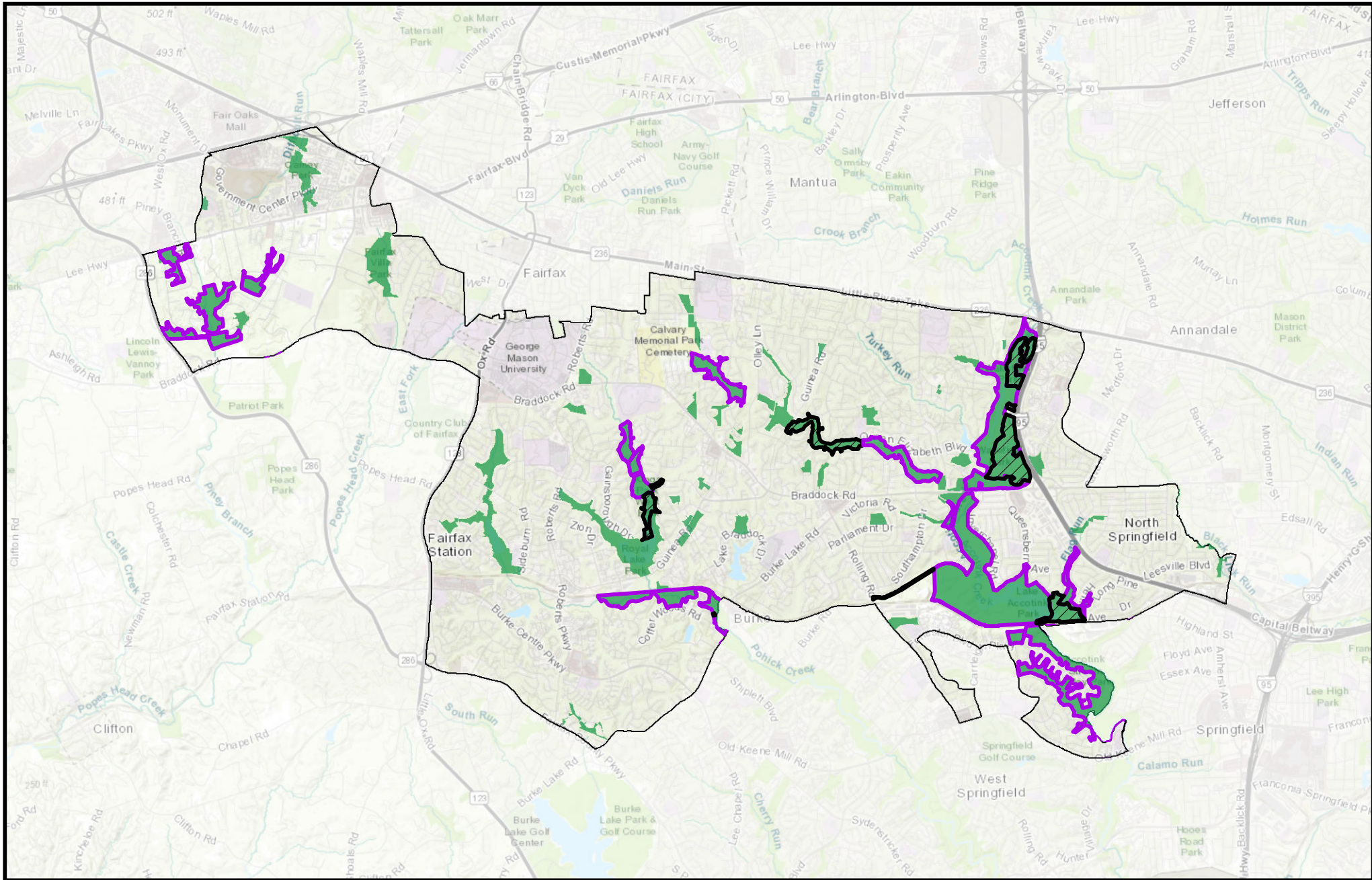
<b>Program Deer Harvest Totals</b>	
<b>FCPA Grand Total - All Methods</b>	<b>860</b>
<b>NOVA Parks Grand Total – All Methods</b>	<b>181</b>
<b>TNC Grand Total – All Methods</b>	<b>29</b>
<b>BOS/Other County Property – All Methods</b>	<b>21</b>
<b>Program Grand Total - All Methods</b>	<b>1,091</b>





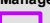




Braddock District											
Park Sites to be Retained for the FY 2019 Deer Management Program											
Park Name	Property Owner	Location	Proposed Methods	Hunt Acreage	Safety Evaluation		Research	Year Added	Harvest FY 16	Harvest FY 17	Harvest FY 18
					Completed/Date						
Accotink Stream Valley Park	FCPA	Springfield	Archery	405	✓	Data NA	FLIR Survey, Camera Survey, Browse Impact Survey	FY 2012	19	27	20
Americana Park	FCPA	Burke	Archery	4	✓	Data NA	FLIR Survey, Camera Survey	FY 2012	--	--	--
Carrleigh Parkway Park	FCPA	Springfield	Archery	10	✓	Data NA	FLIR Survey, Camera Survey	FY 2014	--	--	--
Crooked Creek Park	FCPA	Fairfax	Archery	12	✓	4/8/2015	Camera Survey, Browse Impact Survey	FY 2016	11	1	7
Kings Park West Park	FCPA	Fairfax	Archery	19	✓	4/8/2015	Camera Survey, Browse Impact Survey	FY 2016	8	9	3
Lake Accotink Park	FCPA	Burke	Archery	407	✓	Data NA	FLIR Survey, Camera Survey, Browse Impact Survey	FY 2012	15	14	11
Long Branch Stream Valley	FCPA	Annandale	Archery	90	✓	4/8/2015	Camera Survey	FY 2016	11	6	3
Piney Branch Stream Valley Park	FCPA	Fairfax Station	Archery	140	✓	Data NA	Browse Impact Survey	FY 2014	10	9	12
Pohick Stream Valley Park	FCPA	Springfield	Archery	580	✓	Data NA	Browse Impact Survey	FY 2012	25	24	34
Wakefield Park	FCPA	Burke	Archery	161	✓	Data NA	FLIR Survey, Camera Survey, Browse Impact Survey	FY 2012	8	8	7

# BRADDOCK

# DEER MANAGEMENT BY SUPERVISORY DISTRICT



 Additions_FY19	 FCPA Parks	<b>Management Method</b>	 No Hunting
 NVRPA Parks	 Archery	 Managed Hunt	 Sharpshooting



Please Consult Online Map  
for Detailed Hunting Designations:  
<http://arcg.is/1KctuV>

Miles



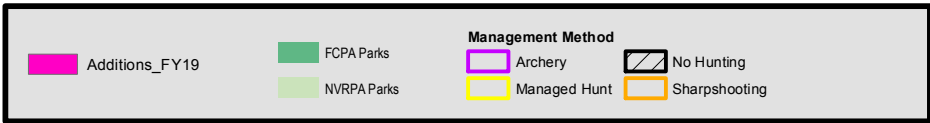
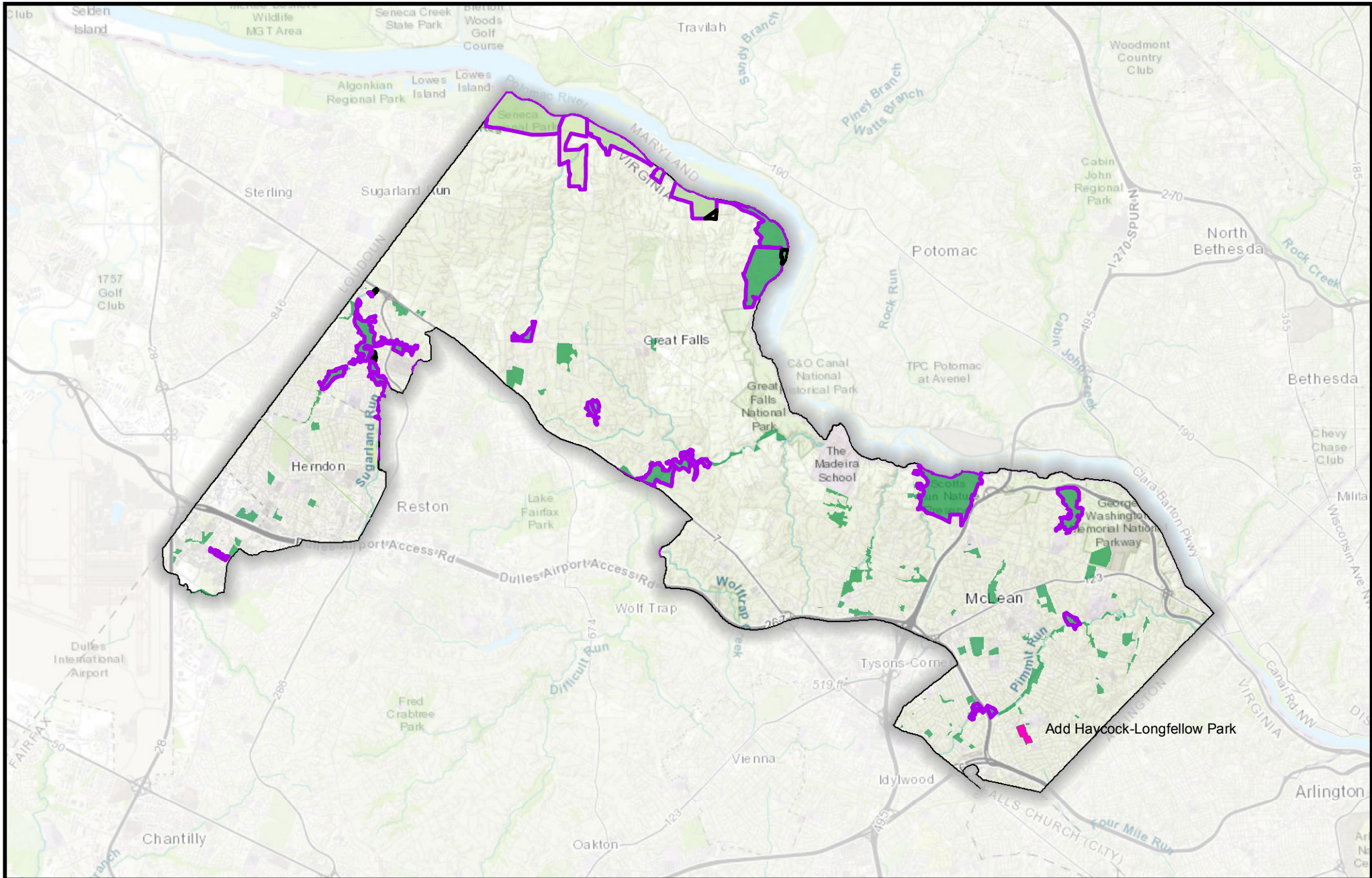
## Dranesville District

### New Sites Proposed for the FY 2019 Deer Management Program

Property Name	Property Owner	Location	Proposed Methods	Hunt Acreage	Safety Evaluation Completed/Date		Research	Year Added	Harvest FY 16	Harvest FY 17	Harvest FY 18
					✓						
Haycock Longfellow Park	FCPA	Falls Church	Sharpshooting	24	✓	3/27/18	Observations	FY 2019	--	--	--
Park Sites to be Retained for the FY 2019 Deer Management Program											
Folly Lick Stream Valley	FCPA	Herndon	Archery	32	✓	4/10/2015	Camera Survey, Browse Impact Survey	FY 2016	4	13	21
Fraser Preserve	The Nature Conservancy	Great Falls	Archery	233	✓	3/2016	Camera Survey	FY 2017	--	26	29
Hickory Run School Site	BOS	Great Falls	Archery	11	✓	4/10/2015	Camera Survey, Browse Impact Survey	FY 2016	19	2	2
Langley Oaks Park	FCPA	McLean	Archery	102	✓	4/10/2015	Browse Impact Survey	FY 2016	8	5	6
Lexington Estates Park	FCPA	Great Falls	Archery	15	✓	4/10/2015	Camera Survey, Browse Impact Survey	FY 2016	2	5	5
Merrybrook Run Stream Valley	FCPA	Herndon	Archery	11	✓	3/2016	Observations	FY 2017	--	7	4
Pimmit Run Stream Valley	FCPA	McLean	Archery	43	✓	3/2016	Browse Impact Survey	FY 2017	--	29	19
Riverbend Park	FCPA	McLean	Archery	394	✓	Data NA	FLIR Survey, Camera Survey, Browse Impact Survey	FY 2012	13	17	19
Scotts Run Nature Preserve	FCPA	McLean	Archery	379	✓	Data NA	FLIR Survey	FY 2013	5	3	5
Shaker Woods Park	FCPA	Herndon	Archery	14	✓	Data NA	Camera Survey	FY 2015	19	5	4
Sugarland Run Stream Valley	FCPA	Herndon	Archery	200	✓	Data NA	Camera Survey, Browse Impact Survey	FY 2012	40	36	43
Windemere Park	FCPA	Great Falls	Archery	24	✓	3/2016	Observations	FY 2017	--	5	1
Upper Potomac/Seneca Regional Park	NOVA Parks	Great Falls	Archery	646	✓	4/20/15	Observations	FY 2016	21	22	35

# DRANESVILLE

# DEER MANAGEMENT BY SUPERVISORY DISTRICT





LONGFELLOW SCHOOL

HAYCOCK-LONGFELLOW PARK

## Hunter Mill District

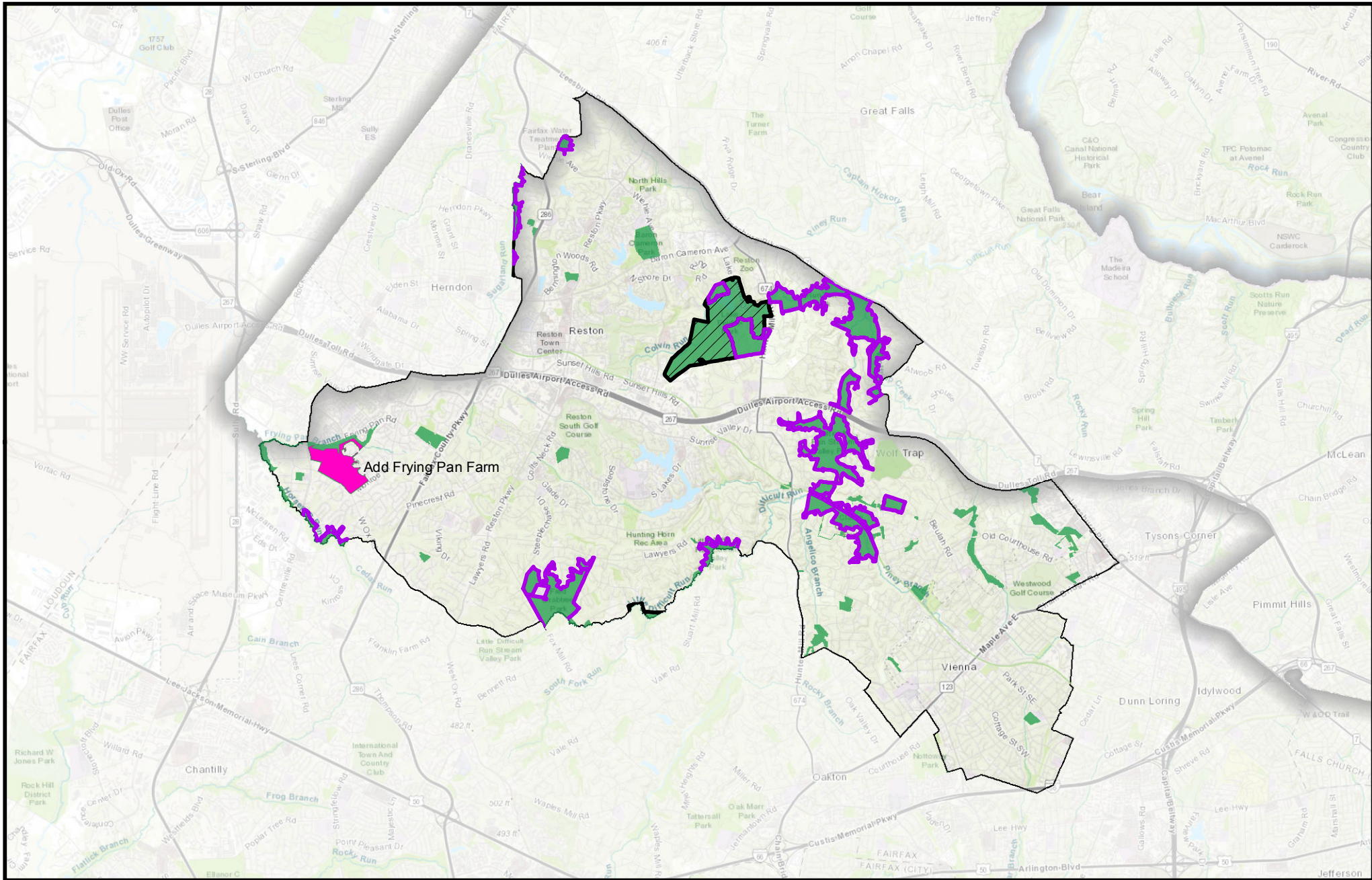
### New Sites Proposed for the FY 2019 Deer Management Program

Park Name	Property Owner	Location	Proposed Methods	Hunt Acreage	Safety Evaluation Completed/Date		Research	Year Added	Harvest FY 16	Harvest FY 17	Harvest FY 18
Frying Pan Farm Park*	FCPA	Herndon	Sharpshooting	136	✓	Data NA	FLIR Survey, Camera Survey, Browse Impact Survey	FY 2015	20	13	--

### Park Sites to be Retained for the FY 2019 Deer Management Program

Park Name	Property Owner	Location	Proposed Methods	Hunt Acreage	Safety Evaluation Completed/Date		Research	Year Added	Harvest FY 16	Harvest FY 17	Harvest FY 18
Clarks Crossing Park	FCPA	Vienna	Archery	124	✓	Data NA	Camera Survey	FY 2012	30	24	29
Colvin Run Mill Park	FCPA	Great Falls	Archery	58	✓	Data NA	Camera Survey	FY 2010	2	6	3
Colvin Run Stream Valley	FCPA	Great Falls	Archery	44	✓	Data NA	Browse Impact Survey, Camera Survey	FY 2010	12	8	9
Difficult Run Stream Valley Park (Colvin)	FCPA	Great Falls	Archery	285	✓	Data NA	Browse Impact Survey, Camera Survey	FY 2011	24	38	10
Difficult Run Stream Valley Park (Vienna)	FCPA	Vienna	Archery	237	✓	Data NA	Browse Impact Survey, Camera Survey	FY 2011	19	15	25
Fred Crabtree Park	FCPA	Herndon	Archery	208	✓	Data NA	FLIR Survey, Camera Survey, Browse Impact Survey	FY 2014	12	18	10
Horsepen Run Stream Valley Park	FCPA	Vienna	Archery	64	✓	4/8/2015	Observations	FY 2017		2	13
Lahey Lost Valley Park	FCPA	Vienna	Archery	23	✓	Data NA	Camera Survey, Browse Impact Survey	FY 2012	1	2	1
Lake Fairfax	FCPA	Reston	Archery	110	✓	Data NA	FLIR Survey, Browse Impact Survey	FY 2007; FY 2011	18	8	15
Little Difficult Run Stream Valley	FCPA	Reston	Archery	63	✓	3/2017	Browse Impact Survey	FY 2018			15
Tamarack Park	FCPA	Vienna	Archery	21	✓	Data NA	Camera Survey	FY 2012	10	6	1
Wolf Trap Stream Valley Park	FCPA	Vienna	Archery	48	✓	4/8/2015	Camera Survey, Browse Impact Survey	FY 2016	13	8	3

\*Frying Pan Farm Park was removed from sharpshooting in FY18 and may be re-added (contingent on deer density survey results planned for August 2018).



Additions_FY19	FCPA Parks	<b>Management Method</b>
NVRPA Parks	Archery	No Hunting
	Managed Hunt	Sharpshooting



Please Consult Online Map for Detailed Hunting Designations:  
<http://arcg.is/1KCTmuV>

Miles



FRYING PAN STREAM VALLEY PARK

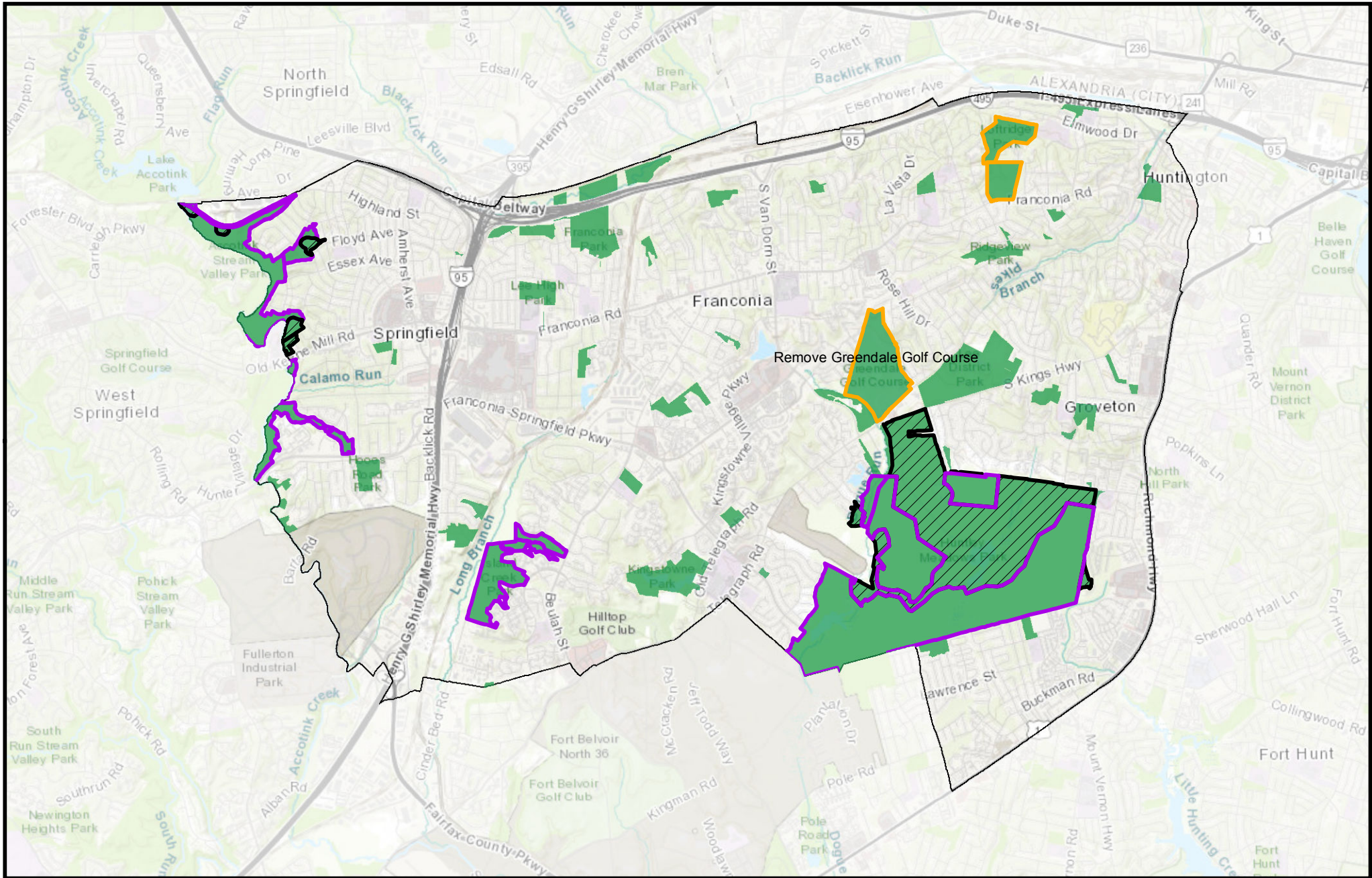
FRYING PAN FARM PARK

FLORIS SCHOOL SITE



Lee District											
Park Sites to be Retained for the FY 2019 Deer Management Program											
Park Name	Property Owner	Location	Proposed Methods	Hunt Acreage	Safety Evaluation Completed/Date		Research	Year Added	Harvest FY 16	Harvest FY 17	Harvest FY 18
Accotink Stream Valley	FCPA	Springfield	Archery	405	✓	Data NA	FLIR Survey, Camera Survey, Browse Impact Survey	FY 2012	19	27	20
Amberleigh Park	FCPA	Alexandria	Archery	18	✓	Data NA	Camera Survey	FY 2015	7	4	1
Brookfield Park	FCPA	Springfield	Archery	19	✓	Data NA	FLIR Survey, Camera Survey	FY 2014	0	1	0
Byron Avenue Park (Access only)	FCPA	Springfield	Archery	-	✓	Data NA	FLIR Survey	FY 2012	--	--	--
Clermont Park/Loftridge Park	FCPA	Alexandria	Sharpshooting	69	✓	3/2016	Camera Survey, Browse Survey	FY 2018	--	--	6
Dogue Creek Stream Valley	FCPA	Alexandria	Archery	21	✓	4/10/15	Observations	FY 2016	--	1	--
Huntley Meadows*	FCPA	Alexandria	Archery/Sharpshooting	778	✓	Data NA	Camera Survey, Browse Impact Survey	FY 2011	48	49	62
Island Creek Park	FCPA	Alexandria	Archery	96	✓	Data NA	Camera Survey, Browse Impact Survey	FY 2015	4	6	6
Park Sites to be Removed for the FY 2019 Deer Management Program											
Greendale Golf Course	FCPA	Alexandria	Sharpshooting	147	✓	6/2/17	Observations	FY 2018	--	--	2

\*Huntley Meadows Park: FY 2019 archery season will be shortened and 4-5 nights of sharpshooting will take place at the end of the season.  
 FY 2018 harvest (34 deer harvested from archery, 28 deer harvested from sharpshooting)



Additions_FY19	FCPA Parks	<b>Management Method</b>
NVRPA Parks	Archery	No Hunting
	Managed Hunt	Sharpshooting



Please Consult Online Map for Detailed Hunting Designations:  
<http://arcg.is/1KctmUV>

Miles

0 0.5 1 2

## Mason District

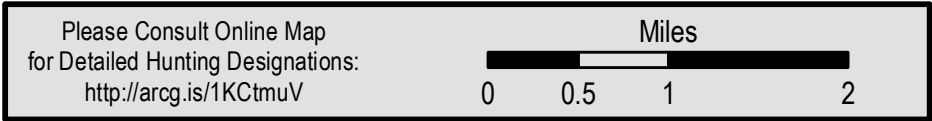
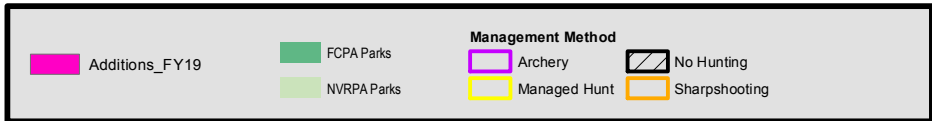
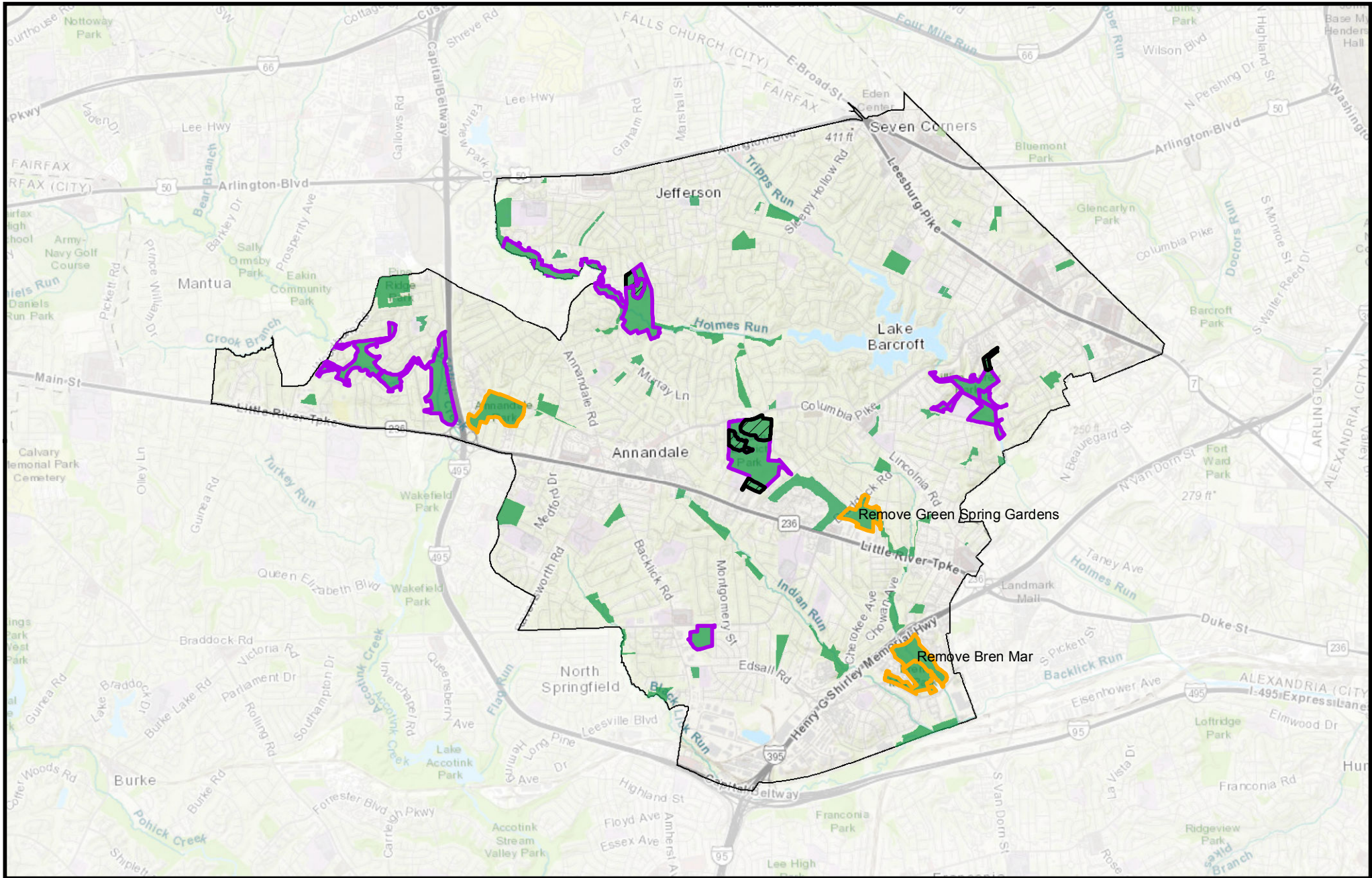
### Park Sites to be Retained for the FY 2019 Deer Management Program

Park Name	Property Owner	Location	Proposed Methods	Hunt Acreage	Safety Evaluation Completed/Date	Research	Year Added	Harvest FY 16	Harvest FY 17	Harvest FY 18
Accotink Stream Valley	FCPA	Annandale	Archery	251	✓ Data NA	FLIR Survey, Camera Survey, Browse Impact Survey	FY 2012	19	27	20
Annandale Community Park	FCPA	Annandale	Sharpshooting	52	✓ 4/9/2015	Observations	FY 2016	16	11	6
Deerlick Park	FCPA	Alexandria	Archery	19	✓ 3/2016	Observations	FY 2017	--	0	0
Holmes Run Stream Valley	FCPA	Annandale/ Falls Church	Archery	80	✓ 3/2017	Browse Impact Survey	FY 2014/2018	1	0	22
Lillian Carey Park	FCPA	Annandale/ Falls Church	Archery	54	✓ Data NA	Observations	FY 2014	6	3	5
Mason District Park	FCPA	Annandale/ Falls Church	Archery	80	✓ Data NA	Browse Impact Survey, Camera Survey	FY 2014	0	4	3
Roundtree Park	FCPA	Annandale/ Falls Church	Archery	61	✓ Data NA	Camera Survey, Browse Impact Survey	FY 2014	15	16	2
Park Sites to be Removed for the FY 2019 Deer Management Program										
Bren Mar Park/Turkeycock Run Stream Valley*	FCPA	Alexandria	Archery/ Sharpshooting	32	✓ 4/9/2015	Camera Survey, Browse Impact Survey	FY 2016	23 (archery)	14	--
Green Spring Gardens	FCPA	Alexandria	Sharpshooting	31	✓ Data NA	Observations	FY 2010	6	5	1

\*Bren Mar Park /Turkeycock Run Stream Valley – Camera survey planned to be conducted in August 2018. Will reevaluate for FY 2020 program.

# MASON

# DEER MANAGEMENT BY SUPERVISORY DISTRICT



Mount Vernon District											
Park Sites to be Retained for the FY 2019 Deer Management Program											
Park Name	Property Owner	Location	Proposed Methods	Hunt Acreage	Safety Evaluation		Research	Year Added	Harvest FY 16	Harvest FY 17	Harvest FY 18
					Completed/Date						
BOS-Mt. Vernon	BOS	Lorton	Archery	231	✓	3/2016	Observations	FY 2017	--	17	15
Colonel John Byers	FCPA	Alexandria	Archery	25	✓	3/2017	Observations	FY 2018	--	--	6
Fairchild Property	BOS	Alexandria	Archery	8	✓	7/2016	Observations	FY 2017	--	1	0
Huntley Meadows *	FCPA	Alexandria	Archery/ Sharpshooting	778	✓	Data NA	Camera Survey, Browse Impact Survey	FY 2011	48	49	62
Laurel Hill & Golf Course	FCPA	Lorton	Archery	1149	✓	Data NA	FLIR Survey, Browse Impact Survey	FY 2010	57	44	44
Little Hunting Creek	FCPA	Alexandria	Archery	10	✓	3/2017	Observations	FY 2018	--	--	0
Mason Neck West	FCPA	Lorton	Archery	44	✓	Data NA	Browse Impact Survey	FY 2015 (sharpshooting); FY 2016 (archery)	3	7	6
Mount Vernon District	FCPA	Alexandria	Archery	88	✓	3/2017	Browse Impact Survey	FY 2018	--	--	10
Newington Heights	FCPA	Lorton	Archery	54	✓	Data NA	FLIR Survey	FY 2013	3	3	1
Noman M. Cole, Jr. Pollution Plant	DPWES	Lorton	Archery	103	✓	3/2016	Observations	FY 2017	--	12	4
Old Colchester Park & Preserve	FCPA	Lorton	Archery	144	✓	Data NA	FLIR Survey, Camera Survey, Browse Impact Survey	FY 2013	4	8	5
Pohick Bay Regional	NOVA Parks	Lorton	Archery	339	✓	Data NA	Observations	FY 2014	4	8	11
Pohick Stream Valley	FCPA	Springfield	Archery	559	✓	Data NA	Browse Impact Survey	FY 2012	25	24	34
South Run Stream Valley	FCPA	Springfield	Archery	271	✓	Data NA	Browse Impact Survey, Camera Survey	FY 2011	5	9	10
Woodlawn	FCPA	Alexandria	Archery	9	✓	4/10/2015	Observations	FY 2016	10	5	5
Park Sites to be Removed for the FY 2019 Deer Management Program											
White Oaks **	FCPA	Alexandria	Sharpshooting	10	✓	3/2017	Observations	FY 2018	--	--	2

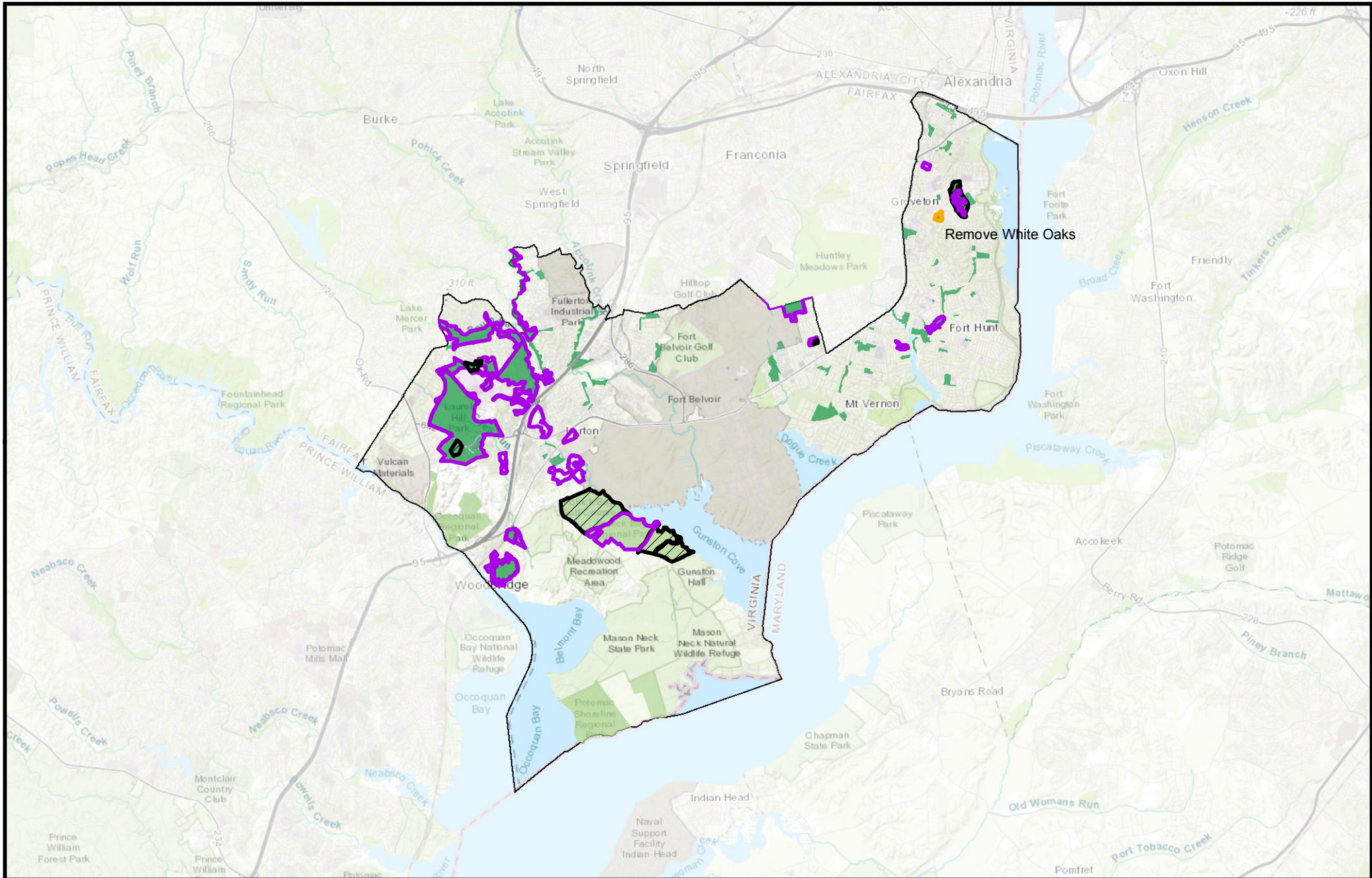
\*Huntley Meadows Park: FY 2019 archery season will be shortened and 4-5 nights of sharpshooting will take place at the end of the season.

FY 2018 harvest = 34 deer from archery and 28 deer from sharpshooting.

\*\* White Oaks Park - Due to low deer activity, sharpshooting operations at White Oaks Park in FY 2018 were cancelled after 2 operations (total harvest = 2 deer).

# MOUNT VERNON

# DEER MANAGEMENT BY SUPERVISORY DISTRICT



Additions_FY19	FCPA Parks	<b>Management Method</b>
NVRPA Parks	Archery	No Hunting
	Managed Hunt	Sharpshooting



Please Consult Online Map  
for Detailed Hunting Designations:  
<http://arcg.is/1KctmUV>

Miles

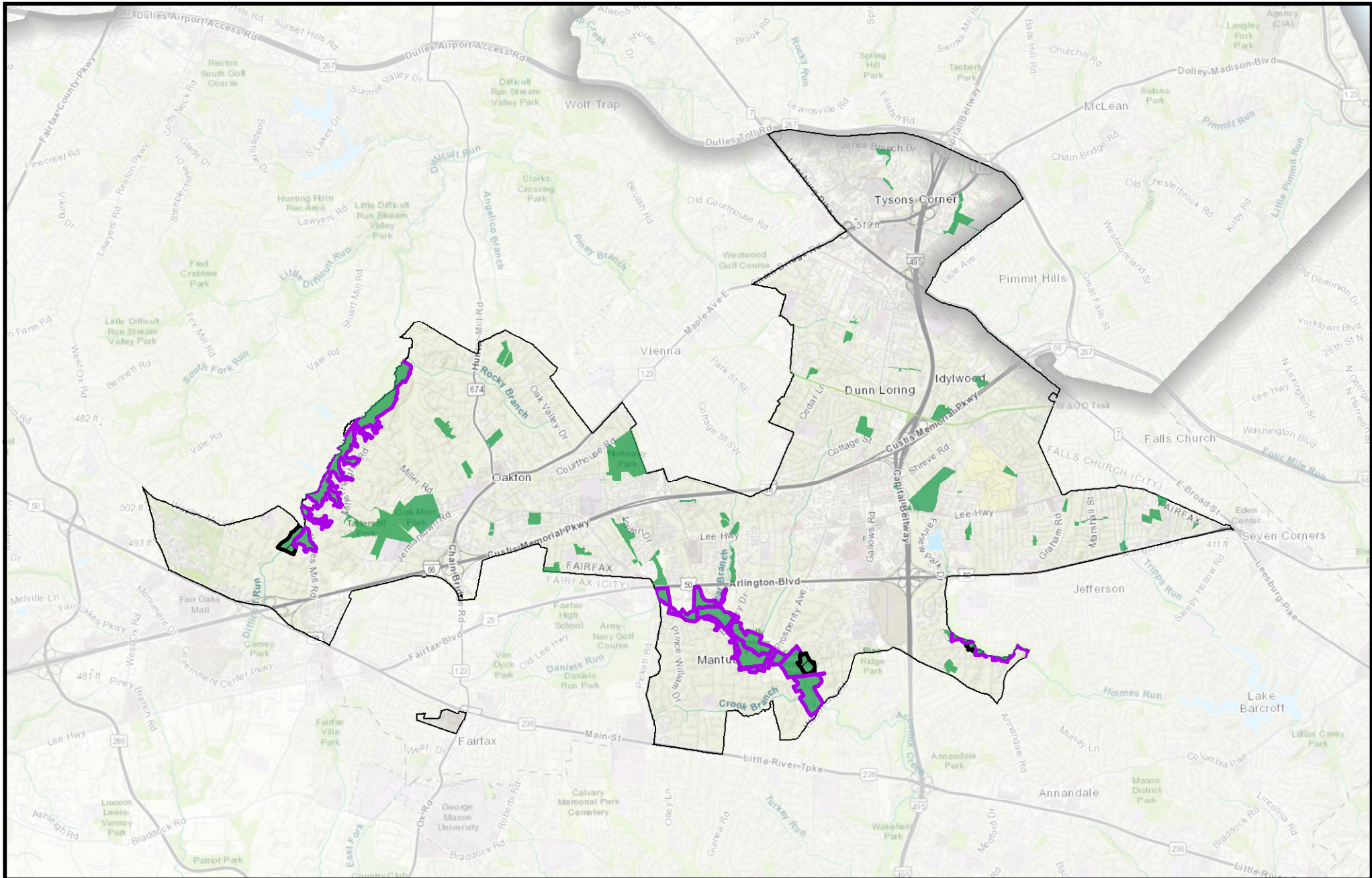
**Providence District**




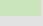
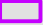
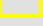
**Park Sites to be Retained for the FY 2019 Deer Management Program**

Park Name	Property Owner	Location	Proposed Methods	Hunt Acreage	Safety Evaluation Completed/Date		Research	Year Added	Harvest FY 16	Harvest FY 17	Harvest FY 18
Accotink Stream Valley	FCPA	Annandale	Archery	251	✓	Data NA	FLIR Survey, Camera Survey, Browse Impact Survey	FY 2012	19	27	20
Difficult Run Stream Valley (Reston)	FCPA	Herndon	Archery	258	✓	Data NA	Camera Survey	FY 2011	13	15	3
Eakin Community Park	FCPA	Annandale	Archery	33	✓	Data NA	Camera Survey, Browse Impact Survey	FY 2012	6	10	6
Eakin Park (Mantua Section)	FCPA	Annandale	Archery	72	✓	Data NA	Camera Survey, Browse Impact Survey	FY 2012	5	6	11
Holmes Run Stream Valley	FCPA	Falls Church	Archery	68	✓	3/2017	Browse Impact Survey	FY 2018	--	--	22
Sally Ormsby Park	FCPA	Annandale	Archery	40	✓	Data NA	Camera Survey	FY 2012	1	2	2
Waples Mill Meadow	FCPA	Herndon	Archery	18	✓	Data NA	Camera Survey, Browse Impact Survey	FY 2015	2	4	3

# PROVIDENCE

# DEER MANAGEMENT BY SUPERVISORY DISTRICT




 Additions_FY19	 FCPA Parks	<b>Management Method</b>	 No Hunting
 NVRPA Parks	 Archery	 Managed Hunt	 Sharpshooting



Please Consult Online Map  
for Detailed Hunting Designations:  
<http://arcg.is/1KCtmuV>

Miles





## Springfield District

### Proposed Additions/Change in Methods for the FY 2019 Deer Management Program

Park Name	Property Owner	Location	Proposed Methods	Hunt Acreage	Safety Evaluation		Research	Year Added	Harvest FY 16	Harvest FY 17	Harvest FY 18
					Completed/Date						
Bull Run Regional (South)*	NOVA Parks	Clifton	Archery/ Sharpshooting	447	✓	3/2016	Observations	FY 2017	--	31	18
Chapel Road Park**	FCPA	Clifton	Archery	25	✓	4/8/2015	Observations	FY 2016 (sharpshooting)	12	4	5

### Park Sites to be Retained for the FY 2019 Deer Management Program

Park Name	Property Owner	Location	Proposed Methods	Hunt Acreage	Safety Evaluation		Research	Year Added	Harvest FY 16	Harvest FY 17	Harvest FY 18
					Completed/Date						
Accotink Stream Valley Park	FCPA	Springfield	Archery	405	✓	Data NA	FLIR Survey, Camera Survey, Browse Impact Survey	FY 2012	19	27	20
Brimstone Park	FCPA	Fairfax Station	Archery	5	✓	4/2016	Observations	FY 2017	--	0	0
Bull Run Marina	NOVA Parks	Clifton	Archery	258	✓	Data NA	Observations	FY 2014	23	21	27
Burke Lake Park & Golf Course	FCPA	Springfield	Archery	323	✓	Data NA	FLIR Survey, Browse Impact Survey	FY 2012	9	15	10
Burke Station Park	FCPA	Springfield	Archery	15	✓	Data NA	Observations	FY 2014	12	7	9
Cherry Run Park	FCPA	Springfield	Archery	4	✓	3/2016	Observations	FY 2017	--	1	2
Confederate Fortifications Historic Site	FCPA	Clifton	Archery	150	✓	Data NA	Camera Survey, Browse Impact Survey	FY 2011	11	11	10
Fountainhead Regional Park	NOVA Parks	Fairfax Station	Archery	2075	✓	Data NA	Observations	FY 2014	34	28	19
Greentree Village Park	FCPA	Springfield	Archery	19	✓	3/2016	Observations	FY 2017	--	2	0
Hemlock Overlook Regional Park	NOVA Parks	Clifton	Archery	392	✓	4/20/15	Camera Survey	FY 2016	44	19	37
Hunter Village Park	FCPA	Springfield	Archery	20	✓	Data NA	FLIR Survey, Camera Survey	FY 2014	7	1	0
Huntsman Lake	FCPA	Springfield	Archery	26	✓	3/2016	Observations	FY 2017	--	5	5
Johnny Moore Stream Valley Park	FCPA	Clifton	Archery	342	✓	Data NA	Camera Survey, Browse Impact Survey	FY 2012	24	30	36

**Park Sites to be Retained for the FY 2019 Deer Management Program**

Park Name	Property Owner	Location	Proposed Methods	Hunt Acreage	Safety Evaluation		Research	Year Added	Harvest FY 16	Harvest FY 17	Harvest FY 18
					Completed/Date						
Lake Mercer Park	FCPA	Springfield	Archery	195	✓	Data NA	Browse Impact Survey, Camera Survey	FY 2012	2	3	4
Lincoln Lewis-Vannoy Park**	FCPA	Fairfax Station	Archery	68	✓	4/2016	Browse Impact Survey	FY 2017	--	27	7
Middle Run Stream Valley	FCPA	Springfield	Archery	169	✓	3/2016	Observations	FY 2017	--	10	4
Patriot Park	FCPA	Fairfax Station	Archery	122	✓	Data NA	Browse Impact Survey	FY 2014	8	8	6
Piney Branch Stream Valley	FCPA	Fairfax Station	Archery	39	✓	3/2017	Browse Impact Survey	FY 2018	--	--	12
Poburn Woods Park	FCPA	Springfield	Archery	11	✓	3/2016	Observations	FY 2017	--	0	0
Pohick Stream Valley Park	FCPA	Springfield	Archery	580	✓	Data NA	Browse Impact Survey	FY 2012	25	24	34
Popes Head Park	FCPA	Fairfax Station	Archery	38	✓	Data NA	Camera Survey, Browse Impact Survey	FY 2014	10	6	13
Rocky Run Stream Valley Park	FCPA	Chantilly	Archery	111	✓	4/7/2015	Camera Survey, Browse Impact Survey	FY 2016	34	25	10
Sandy Run Regional Park	NOVA Parks	Fairfax Station	Archery	330	✓	Data NA	Observations	FY 2014	16	10	8
Sandy Run Stream Valley	FCPA	Fairfax Station	Archery	39	✓	3/2016	Observations	FY 2017	--	4	0
Shannon Station Park	FCPA	Springfield	Archery	13	✓	Data NA	Observations	FY 2014	8	2	4
South Run District Park	FCPA	Springfield	Archery	115	✓	Data NA	Browse Impact Survey, Camera Survey	FY 2011	19	11	6
South Run Stream Valley Park	FCPA	Springfield	Archery	319	✓	Data NA	Browse Impact Survey, Camera Survey	FY 2011	5	9	10
West Springfield Village Park	FCPA	Springfield	Archery	10	✓	Data NA	Observations	FY 2014	10	4	1
Willow Pond	BOS	Chantilly	Archery	11	✓	3/2016	Observations	FY 2017	--	0	0

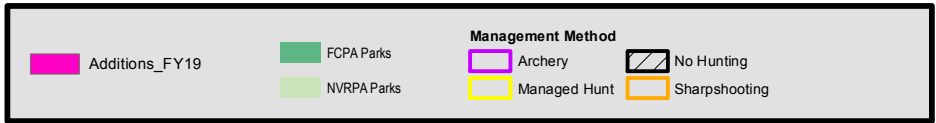
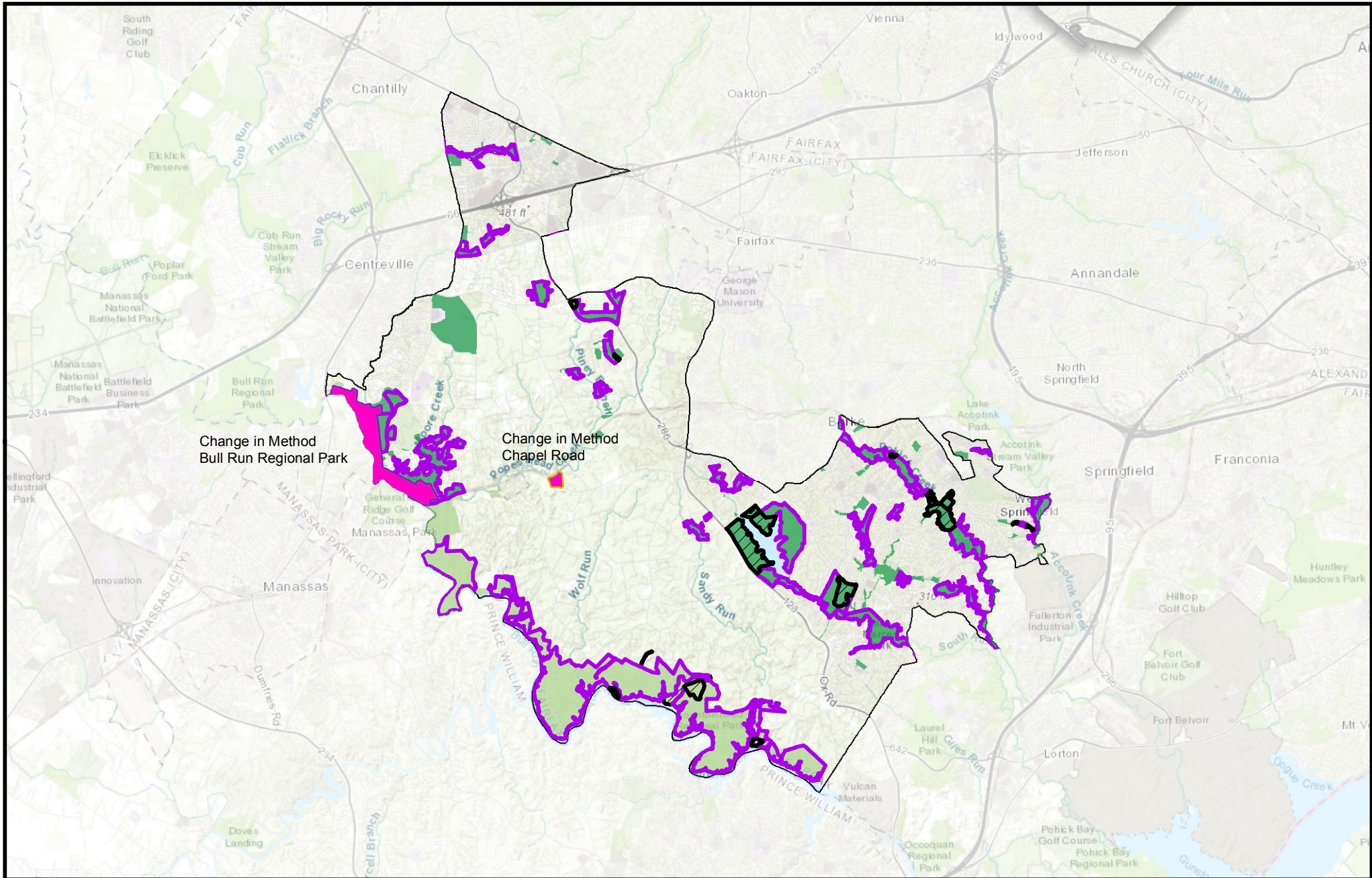
\*Bull Run Regional Park – Archery season followed by 4-5 nights of sharpshooting at the end of the season.

\*\*Chapel Road Park – Proposed change in method from sharpshooting to archery.

\*\*\*Lincoln Lewis-Vannoy – may have reduced acreage and shortened archery season due to planned development/construction.

# SPRINGFIELD

# DEER MANAGEMENT BY SUPERVISORY DISTRICT





CHAPEL ROAD PARK

## Sully District

### Proposed Additions/Changes in Methods for the FY 2019 Deer Management Program

Park Name	Property Owner	Location	Proposed Methods	Hunt Acreage	Safety Evaluation		Research	Year Added	Harvest FY 16	Harvest FY 17	Harvest FY 18
					Completed/Date						
Bull Run Regional Park	NOVA Parks	Centreville	Archery/ Sharpshooting	347	✓	Data NA	Camera Survey	FY 2014	35	30	26
Bull Run Regional (South)	NOVA Parks	Centreville	Archery/ Sharpshooting	447	✓	3/2016	Observations	FY 2017	--	31	18
Elklick Preserve*	FCPA	Centreville	Archery/ Managed Hunt	1413	✓	Data NA	FLIR Survey, Browse Impact Survey	FY 2006 (managed hunt); FY 2011 (archery)	16 (archery); 36 (Sully Woods managed hunt)	39 (archery only)	35 (archery only)
Halifax Point District Park (park renamed – used to be part of Elklick)	FCPA	Centreville	Archery	271	✓	Data NA	FLIR Survey, Browse Impact Survey	FY 2011 (archery)	16 (Elklick archery)	39 (Elklick archery)	35 (Elklick archery)
Mountain Road District Park*	FCPA	Centreville	Archery/ Managed Hunt	201	✓	Data NA	FLIR Survey	FY 2011	9 (archery); 36 (Sully Woods managed hunt)	7 (archery only)	7 (archery only)
Richard Jones/Pleasant Valley Golf Course*	FCPA	Chantilly	Managed Hunt	245	✓	Data NA	FLIR Survey	FY 2006	36 (Sully Woods managed hunt)	--	--
Rock Hill District Park*	FCPA	Chantilly	Archery/ Managed Hunt	169	✓	Data NA	FLIR Survey, Browse Impact Survey	FY 2006	36 (Sully Woods managed hunt)	8 (archery only)	5 (archery only)

### Park Sites to be Retained for the FY 2019 Deer Management Program

Park Name	Property Owner	Location	Proposed Methods	Hunt Acreage	Safety Evaluation		Research	Year Added	Harvest FY 16	Harvest FY 17	Harvest FY 18
					Completed/Date						
Cub Run Stream Valley	FCPA	Chantilly	Archery	626	✓	Data NA	FLIR Survey, Browse Impact Survey, Camera Survey	FY 2011	26	19	27
Difficult Run Stream Valley (Reston)	FCPA	Herndon	Archery	258	✓	Data NA	Camera Survey	FY 2011	13	15	3
Ellanor C Lawrence Park	FCPA	Chantilly	Archery	433	✓	Data NA	FLIR Survey, Camera Survey, Browse Impact Survey	FY 2011	29	26	36

**Park Sites to be Retained for the FY 2019 Deer Management Program**

Park Name	Property Owner	Location	Proposed Methods	Hunt Acreage	Safety Evaluation		Research	Year Added	Harvest FY 16	Harvest FY 17	Harvest FY 18
					Completed	Date					
Foxvale Park	FCPA	Oakton	Archery	25	✓	4/8/2015	Observations	FY 2016	6	5	2
Flatlick Stream Valley	FCPA	Centreville	Archery	60	✓	4/8/2015	Camera Survey	FY 2016	2	7	8
Fred Crabtree Park	FCPA	Herndon	Archery	208	✓	Data NA	FLIR Survey, Browse Impact Survey, Camera Survey	FY 2014	12	18	10
Hickory Forest Park	FCPA	Centreville	Archery	95	✓	Data NA	FLIR Survey, Camera Survey	FY 2013	2	2	1
Horsepen Run Stream Valley Park	FCPA	Vienna	Archery	64	✓	3/2016	Observations	FY 2017	--	2	13
Little Difficult Run Stream Valley Park	FCPA	Herndon	Archery	72	✓	Data NA	Browse Impact Survey	FY 2014	11	10	15
Poplar Ford Park	FCPA	Centreville	Archery	372	✓	Data NA	FLIR Survey	FY 2011	16	12	8
Rocky Run Stream Valley Park	FCPA	Chantilly	Archery	79	✓	4/7/2015	Camera Survey, Browse Impact Survey	FY 2016	34	18	10
Sully Historic Site	FCPA	Chantilly	Archery	84	✓	Data NA	Observations	FY 2011	14	9	9
Waples Mill Meadow Park	FCPA	Herndon	Archery	18	✓	Data NA	Camera Survey, Browse Impact Survey	FY 2015	2	4	3
Willow Pond Park	FCPA	Chantilly	Archery	55	✓	3/2016	Observations	FY 2017	--	0	0

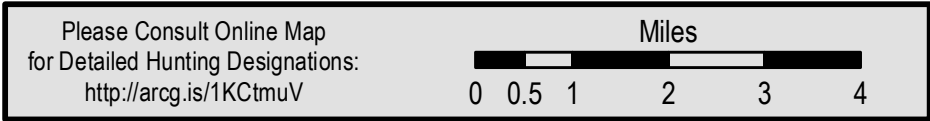
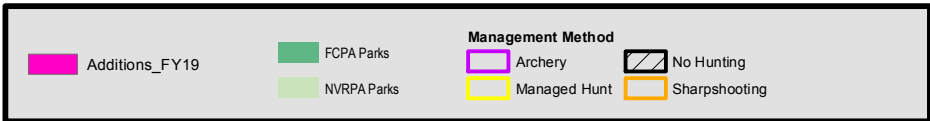
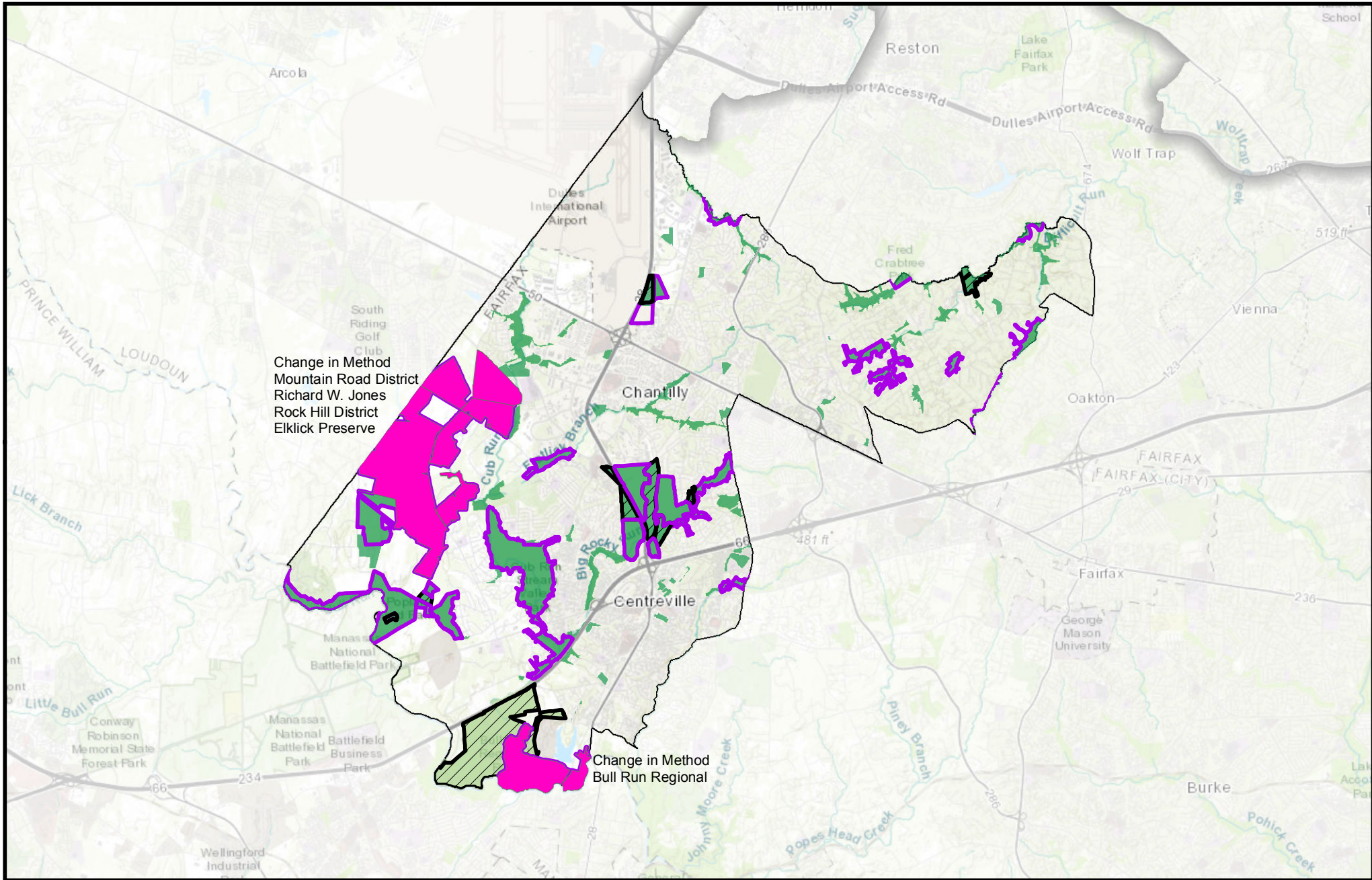
\*Elklick Preserve, Rock Hill District Park, Mountain Road District Park and Richard W. Jones/Pleasant Valley Golf Course (Sully Woods): Managed shotgun hunts were conducted in the Sully Woodlands area from FY 2006 – FY 2016. We propose to use a combination of archery and managed shotgun hunts at Elklick Preserve, Rock Hill District Park and Mountain Road District Park for FY 2019. Archery will be suspended in these areas on days that the managed hunts are conducted and will resume following the hunts. Only managed shotgun hunts (no archery) will be used at Richard W. Jones/Pleasant Valley Golf Course.

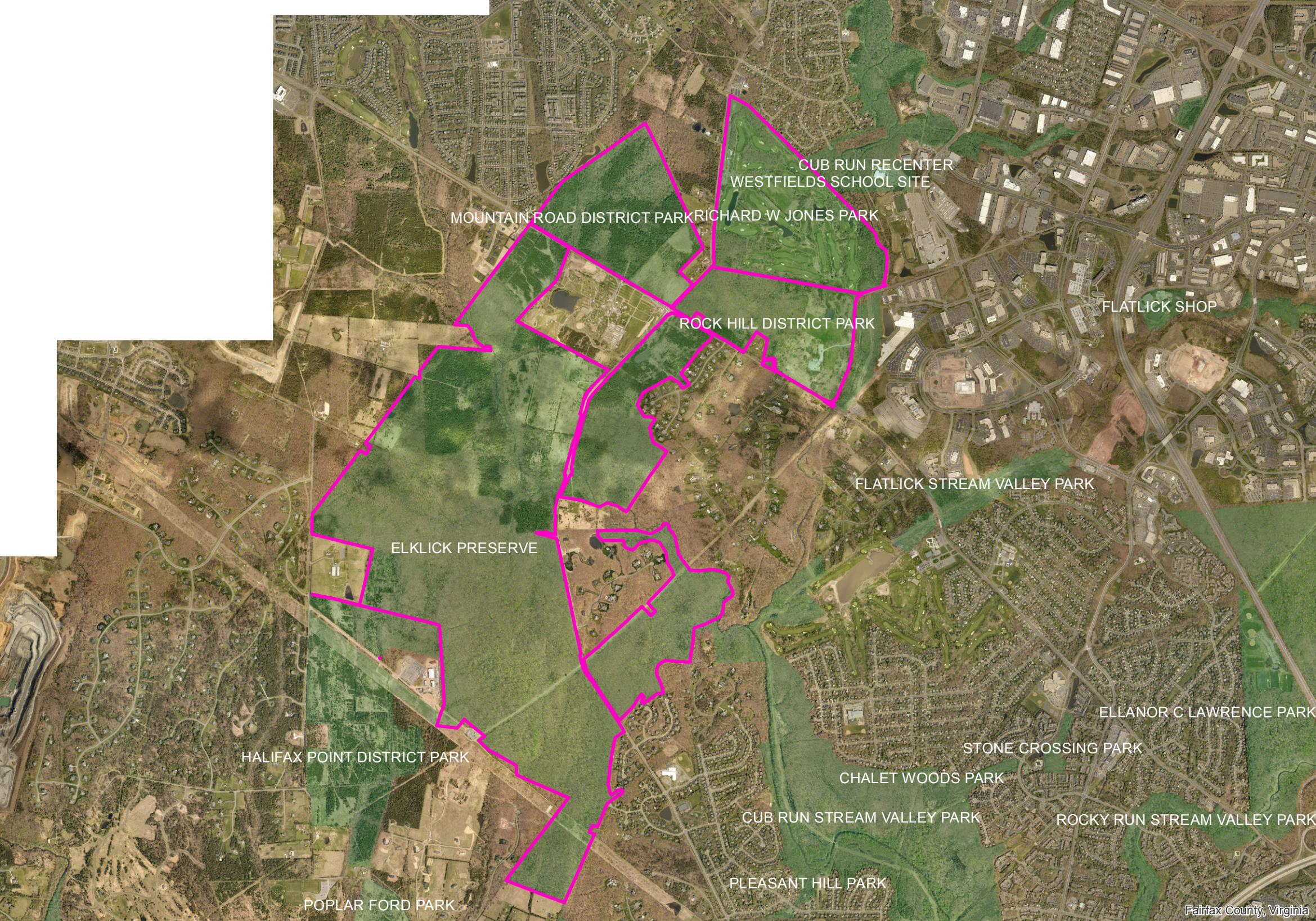
We are proposing to conduct managed shotgun hunts on the following dates:

Wednesday, November 28, 2018

Wednesday, January 9, 2019

Wednesday, February 6, 2019





MOUNTAIN ROAD DISTRICT PARK RICHARD W JONES PARK

CUB RUN RECENTER  
WESTFIELDS SCHOOL SITE

ROCK HILL DISTRICT PARK

FLATLICK SHOP

FLATLICK STREAM VALLEY PARK

ELKLICK PRESERVE

ELLANOR C LAWRENCE PARK

HALIFAX POINT DISTRICT PARK

STONE CROSSING PARK

CHALET WOODS PARK

CUB RUN STREAM VALLEY PARK

ROCKY RUN STREAM VALLEY PARK

POPLAR FORD PARK

PLEASANT HILL PARK