



# FAIRFAX COUNTY PARK AUTHORITY



## M E M O R A N D U M

**TO:** Chairman and Members  
Park Authority Board

**VIA:** Kirk W. Kincannon, Executive Director

**FROM:** Barbara Nugent, Director  
Resource Management Division

**DATE:** December 6, 2018

### *Agenda*

**Resource Management Committee  
Wednesday, December 12, 2018 – 5:45 p.m.**

**Boardroom – Herrity Building**

**Chairman: Maggie Godbold**

**Vice Chair: Linwood Gorham**

**Members: Kiel Stone, Timothy Hackman, Abena Aidoo**

1. Scope Approval - Ellanor C. Lawrence Park Forest Restoration Project – Action\*

\*Enclosures



If accommodations and/or alternative formats are needed, please call (703) 324-8563. TTY (703) 803-3354

Board Agenda Item  
January 9, 2019

## **ACTION**

Scope Approval – Ellanor C. Lawrence Park Forest Restoration Project (Sully District)

### ISSUE:

Approval of the project scope to plan and implement a forest restoration project at Ellanor C. Lawrence Park.

### RECOMMENDATION:

The Park Authority Executive Director recommends approval of the project scope to plan and implement a forest restoration project at Ellanor C. Lawrence Park to mitigate for loss of healthy forest and associated natural capital resulting from the development of a parking lot entrance road located in the northwest corner of the park.

### TIMING:

Board approval of the project scope is requested on January 9, 2019.

### BACKGROUND:

The scope helps achieve Recommended Actions 5, 8, and 16 through 19 in the agency-wide Natural Resource Management Plan. It will also help achieve recommended actions with the park's Forest Management Plan and comply with the park's Master Plan. The project will be administered by the Park Authority's Helping Our Land Heal Program, which was largely developed at Ellanor C. Lawrence Park.

The goal of the project is to restore self-sustaining native plant communities on at least six acres of land at Ellanor C. Lawrence Park. The project will remove non-native invasive vegetation and unhealthy forest, and restore native plant community types in areas identified on the enclosed Management Unit Priorities Map. The natural community to be restored is Piedmont Acidic Oak Hickory Forest (CEGL008475), which is the same forest type that was impacted by the development of the entrance road. Specific areas proposed for restoration are identified as Priority 1 on the Ellanor C. Lawrence Management Units Map, enclosed as Attachment 2. Any surplus project funds will be used to restore additional acreage identified on the map as Priority 2.

### FISCAL IMPACT:

Based on the scope cost estimate, funding in the amount of \$372,000 is necessary to conduct the project (Attachment 1). Funding is available in the amount of \$372,000 in

Board Agenda Item  
January 9, 2019

Fund 300-C30400, Cost Center P515104001, Internal Order PR-000091, Existing Facility Renovation – 2012, Park Bond Premium.

ENCLOSED DOCUMENTS:

Attachment 1: Scope Cost Estimate for Ellanor C. Lawrence Park Forest Restoration Project

Attachment 2: Ellanor C. Lawrence Park Management Unit Priorities Map

Attachment 3: Ellanor C. Lawrence Park Forest Restoration Project Proposed Management Units Existing and Desired Conditions

STAFF:

Kirk Kincannon, Executive Director

Sara Baldwin, Deputy Director/COO

Aimee L. Vosper, Deputy Director/CBD

David Bowden, Director, Planning and Development Division

Barbara Nugent, Director, Resource Management Division

Todd Brown, Director, Park Operations Division

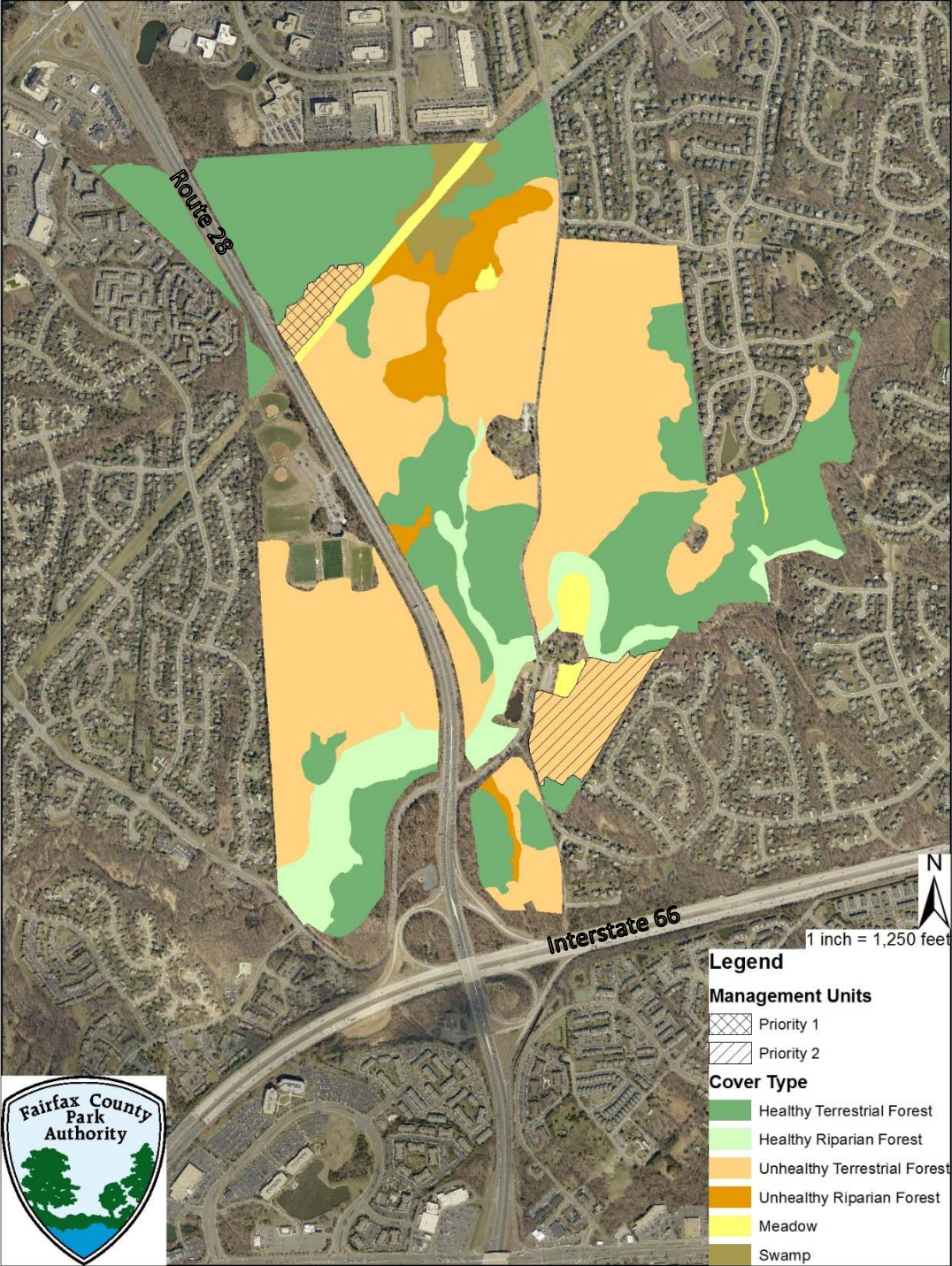
Cindy Walsh, Director, Park Services Division

John Stokely, Manager, Natural Resources Branch

**Ellanor C. Lawrence Park Forest Restoration Project**  
**Scope Cost Estimate**

Project Administration	\$ 37,000
Site Design and Planning	\$ 15,000
Implementation, Monitoring and Close-out	<u>\$ 320,000</u>
<b>TOTAL</b>	<b>\$ 372,000</b>

# Ellanor C. Lawrence Park Forest Restoration Management Unit Priorities Map





**Ellanor C. Lawrence Park Forest Restoration Project**  
**Proposed Management Units Existing and Desired Conditions**

Existing Condition – Unhealthy Successional/Modified Terrestrial Forest



Desired Condition – Healthy Piedmont Acidic Oak-Hickory Forest

