



FAIRFAX COUNTY PARK AUTHORITY



M E M O R A N D U M

TO: Chairman and Members
Park Authority Board

VIA: Jai Cole, Executive Director

FROM: Laura Grape, Division Director, Resource Management

DATE: May 19, 2022

Agenda

**Resource Management Committee
(Committee of the Whole)
Wednesday, May 25, 2022 – 6:15 pm
Boardroom – Herrity Building
Chairman: Kiel Stone
Vice Chair: Linwood Gorham**

1. Deer Management Plan (with presentation) – Information*

*Enclosures



If accommodations and/or alternative formats are needed, please call (703) 324-8563. TTY (703) 803-3354

Board Agenda Item
May 25, 2022

INFORMATION (with presentation)

Deer Management Plan

The Park Authority has been participating in the Fairfax County Deer Management Program since its inception in 1998. The program includes approximately 100 FCPA parks and three treatment methods (archery, managed shotgun hunts, and sharpshooting).

Each year the Park Authority Board receives information about the deer management activities planned for the coming fiscal year, as overseen and implemented by the Fairfax County Police Department.

Unless otherwise directed, staff will proceed with the Deer Management Program as planned.

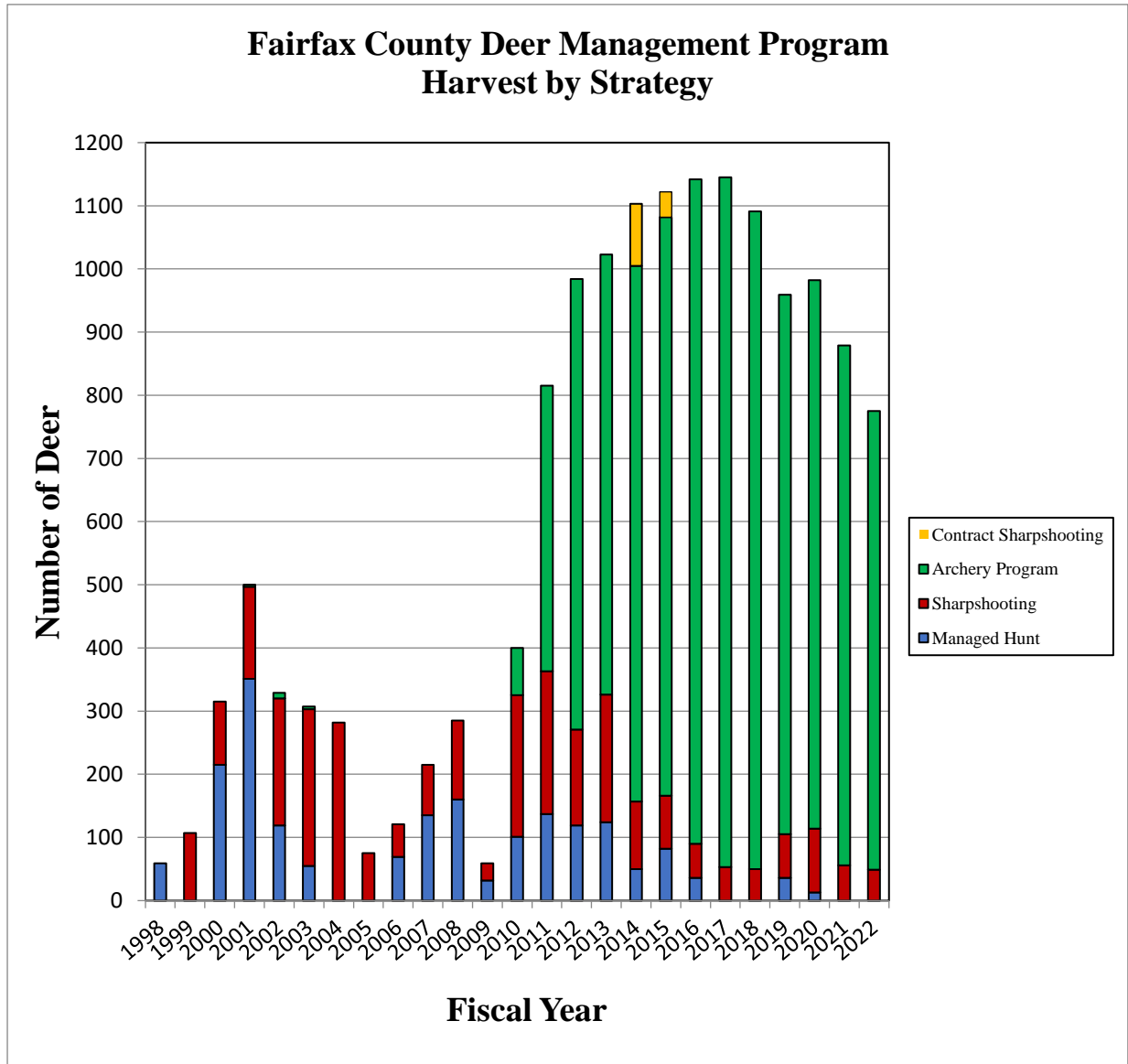
Summary for FY22 (2021-2022)

Attachment 1 summarizes deer harvest results by park and treatment method for the previous season of the Fairfax County Deer Management Program. Two treatment methods were implemented in FY22: archery hunting and police sharpshooting. No managed shotgun hunts were conducted. There are currently no non-lethal methods approved for deer population control in Virginia.

Deer herd reduction activities took place at 99 FCPA parks with 636 deer removed (775 in total including non-FCPA properties).

Archery continues to be the most cost-effective and successful method of herd management, representing 94% of the total program harvest last season. Last season, 545 volunteers participated in the archery program donating 37,778 hours of hunting and scouting hours, for an average of 69 hours per volunteer. These volunteers were organized into 18 hunt clusters and were individually screened (background check, licensure, hunter safety education) and qualified for accuracy to participate by the Fairfax County Police Department. Fairfax County insures these volunteers under its general liability policy.

Sharpshooting was conducted at 11 county parks: Annandale Community Park, Bren Mar Park/Turkeycock Run Stream Valley, Chapel Road Park, Dranesville Tavern/Grand Hamptons Park, Franconia Park/Monticello Woods, Frying Pan Farm Park, Green Spring Gardens, and Huntley Meadows.



Planned Activities for FY23 (2022-2023)

Attachment 2 summarizes the parks proposed for the upcoming season of the Deer Management Program, organized by supervisory district.

Parks are recommended for the program based on one or more of the following factors:

1. Public safety concerns related to deer-vehicle collisions
2. Residential complaints of deer damage near the park

Board Agenda Item
May 25, 2022

3. High estimated deer population in the park (> 20 deer/sq. mile)
4. Measurable impact to park vegetation (within browse plots)
5. High natural resource value of the park
6. At the request of the park manager

All approved hunting and parking areas will be mapped in a Geographic Information System (GIS) by July and made available online to the public as a web map linked from the Police Department's Deer Management Program website (<https://www.fairfaxcounty.gov/wildlife/deer-management-program>). This data is also made accessible to all county employees within the GIS data system.

Archery dates: Saturday, September 10, 2022 - Saturday, February 18, 2023.

Staff propose to add the following FCPA parks for the archery program: Country Club View Park and Fairfax Villa Park (Braddock District); Old Courthouse Spring Branch Stream Valley and Raglan Road Park (Hunter Mill District); Groveton Heights Park, Loisdale Park, and Ridgeview Park (Lee District); and Grist Mill Park, Paul Springs Stream Valley (portion), Kirk Park (portion), and Pole Road Park (Mount Vernon District).

Sharpshooting dates: Various dates (TBD) between November 2022 – March 2023.

Operations will not be conducted over the Thanksgiving holiday from November 23 – 27, 2022 or during the winter holiday season from December 16, 2022 – January 2, 2023.

No new FCPA parks are proposed for the FY 2023 sharpshooting program. The upcoming sharpshooting schedule will include Bren Mar/Turkeycock Run Stream Valley, Franconia Park/Monticello Woods, Frying Pan Farm Park, Green Spring Gardens, and Huntley Meadows, that have been included in prior years. Huntley Meadows Park will receive a combination of management methods including a shortened archery season followed by sharpshooting in the late season, as has been conducted successfully in recent years. The final park list will be dependent on FCPD staffing and schedule during the fall and winter.

Shotgun hunts: No managed shotgun hunts will be conducted in the Sully Woodlands area in FY 2023 due to low harvest using this method in recent years and to reduce program operating costs. Hunts have been held in this area over most seasons dating back to FY 2006, with only a few exceptions. Ellick Preserve, Halifax Point District Park, Mountain Road District Park, and Rock Hill District Park will remain in the archery program and only archery will be used at these parks for deer herd reduction in FY

Board Agenda Item
May 25, 2022

2023. Richard W. Jones Park (Pleasant Valley Golf Course) will not be included in the program since managed hunts are not being conducted.

Public Notification: Notification letters will be mailed to property owners adjacent to approved park sites in July 2022. Letters are mailed to residences that fall within 200 feet of parks included for archery and within 500 feet of parks included for sharpshooting. Over 23,000 letters were mailed in FY 2022.

FY23 Deer Management Program Public Information Meetings:

Public meetings for the FY 2023 Deer Management Program have not been determined at this time. Links to a recorded webinar providing an overview of the Deer Management Program will be posted on the county's Deer Management Program website in August as has been conducted for the past two years. If there are concerns about new park additions (or existing parks), staff will be available to speak with or meet with residents, HOAs, Civic Associations, etc. as needed to address concerns.

Data Collection Efforts

Data collection efforts in FY23 focus on the following components of the program:

- 1) Evaluating the browse impact of deer on native vegetation
- 2) Conducting deer density estimates with game camera surveys
- 3) Collecting herd health data over the course of the season

Browse Impact Surveys

Park staff have established 542 permanent vegetation plots in 61 parks included in the Deer Management Program. Deer browse impacts to native woody vegetation are measured at each plot location. In FY 2022, 208 browse plots were surveyed by park ecologists. Plots will be resampled at 4-year intervals to evaluate deer browse impact trends over time.

Camera Surveys

Deer density surveys are conducted in select parks using infrared-triggered cameras to estimate the number of deer visiting a bait station. Larger parks will contain multiple stations. These surveys do not represent an exact number of deer but are used to estimate the local deer population and establish trends over time.

Board Agenda Item
May 25, 2022

In August 2021, camera surveys to estimate deer density were conducted in 25 parks (36 camera stations). Camera surveys are tentatively planned for 15-20 parks (35-45 camera stations) in August 2022. Surveys for FY 2023 are tentative based on funding and staff availability.

Staff are also investigating the possibility of using small Unmanned Aerial Systems (drone) to conduct deer density surveys. Surveys using this technology has been recently used to conduct deer surveys in county parks in Montgomery County, MD and county-wide in Arlington County, VA. The need for alternate survey methods that do not require the use of bait may become a necessity in the future due to protocols and regulations related to Chronic Wasting Disease and bear activity in parks. More information will be provided to FCPA for review after we receive proposals from vendors to determine whether a drone pilot study might be feasible.

Herd Health Data

Staff plan to continue the collection herd health data for deer harvested through archery and sharpshooting, with emphasis on increasing surveillance for Chronic Wasting Disease (CWD), an emerging disease affecting white-tailed deer in Virginia, and other states. CWD is an incurable, progressive neurological disease found in deer, elk, and moose in North America that ultimately results in the death of the animal. CWD is caused by abnormal infectious proteins called prions that are spread through the urine, feces, and saliva of infected animals and through water or soil contaminated with prions. CWD was first confirmed in Virginia in 2009 and the Virginia Department of Wildlife Resources (VDWR) has overseen surveillance and management efforts, including the designation of Disease Management Areas to try and limit spread of the disease within deer populations in the Commonwealth. CWD has not been confirmed in Fairfax County but has been confirmed in Loudoun County and Fauquier Counties.

County staff are taking a proactive approach to conduct surveillance due to the potential impacts of this fatal neurological disease on deer populations in Fairfax County in the future. Staff were trained by VDWR personnel to take tissue samples from harvested deer for testing of CWD. Samples are submitted to the Wisconsin Veterinary Diagnostic Laboratory for testing and results are reported to the VDWR.

Attachment 3 summarizes the FY 2022 CWD sampling effort by park location. In FY 2022, samples were collected from 195 deer (100 bucks, 95 does) harvested in 54 FCPA parks (225 deer in total including non-FCPA properties). A total of 458 deer (225 bucks, 233 does) have been sampled from FY 2020-2022 through the Fairfax County Deer Management Program. All results to date have come back as CWD "Not Detected."

Board Agenda Item
May 25, 2022

For the past two years, staff have used “CWD Surveillance Drop Sites” in accordance with VDWR guidelines to sample a greater number of deer harvested in the archery program. This included temporary establishment of small freezer stations where hunters drop off samples from harvested deer for CWD testing. Freezer drop sites are secured from public access and operated from October – December. FCPD Wildlife staff monitor these locations and process the material for lab submission. Drop sites were established at Burke Lake, Lake Accotink, Lake Fairfax, Grist Mill Park, and the Flatlick Maintenance Shop (Area 5 Shop) in prior years. With FCPA permission, staff plans to temporarily establish freezer drop sites again in FY 2023 at the same FCPA properties for approved hunters to access during the fall and winter deer season.

In addition to CWD testing, more extensive data will be collected from deer harvested through sharpshooting efforts including deer aging based on jawbones, dressed scale weights, antler measurements, hoof examination (sloughing/splitting as an indicator of Hemorrhagic Disease), and pregnancy/lactation status. Staff will also coordinate with personnel from the Health Department’s Disease Carrying Insects Program (DCIP) to collect ticks from harvested deer.

Venison Donations

Over the past five years, 1,527 deer harvested in the county’s Deer Management Program have been donated to provide food for people in need. This includes 646 deer donated to Hunters for the Hungry and 881 deer donated directly to individuals. Based on a conservative estimate of 30 lbs. of venison per deer, this equates to 45,810 lbs. (183,240 meal servings) of donated venison.

FISCAL IMPACT:

The Police Department dedicates time of one Wildlife Management Specialist (Katherine Edwards, Ph.D.) and one Animal Protection Police Supervisor (Sergeant Earit Powell), with two full-time Assistant Wildlife Biologist positions and two seasonal assistants supporting field tasks during the hunt season. Additional overtime is authorized as needed for Police Department personnel to provide sharpshooting services and security during night-time sharpshooting operations and daytime managed hunts when conducted.

The Park Authority dedicates 1/3 time of one Ecologist III to support the Deer Management Program.

ENCLOSED DOCUMENTS:

Board Agenda Item
May 25, 2022

Attachment 1 - FY 2022 Deer Harvest Totals for Fairfax County Parks
Attachment 2 - FY 2023 Proposed Deer Management Sites by Supervisory District
Attachment 3 - FY 2022 Chronic Wasting Disease Report

STAFF:

Jai Cole, Executive Director
Aimee Vosper, Deputy Director/CBD
Sara Baldwin, Deputy Director/COO
Laura Grape, Director, Resource Management Division
Cindy Walsh, Director, Park Services Division
Kurt Louis, Director, Park Operations Division
John Burke, Manager, Natural Resources Branch
Dave Lawlor, Ecologist, Resource Management Division
Judy Pedersen, Public Information Officer

**Fairfax County Deer Management Program
FY 2022 Deer Harvest Totals**

| Archery | |
|-------------------------------------------|---------------------------------|
| Cluster Name | Number of Deer Harvested |
| 1 – Accotink Stream Valley Cluster | 28 |
| Accotink Stream Valley Park | 22 |
| Brookfield Park | 0 |
| Carrleigh Parkway | 0 |
| Eakin Community Park | 5 |
| Eakin Park (Mantua Section) | 1 |
| Hunter Village Park | 0 |
| Sally Ormsby Park | 0 |
| 2 – Bull Run Marina Cluster | 5 |
| Bull Run Marina* | 4 |
| Hemlock Overlook* | 1 |
| 3- Bull Run Regional Park | 16 |
| Bull Run Regional Park* | 16 |
| 4 – Clifton Cluster | 24 |
| Bull Run Regional Park South* | 8 |
| Confederate Fortifications | 8 |
| Johnny Moore Stream Valley | 8 |
| 5 – Colvin Run Cluster | 27 |
| Colvin Run Mill Park | 4 |
| Colvin Run Stream Valley | 5 |
| Difficult Run Stream Valley (Colvin) | 7 |
| Lake Fairfax Park | 10 |
| Wolftrap Stream Valley | 1 |
| 6 – Cub Run Cluster | 90 |
| Cub Run Stream Valley | 15 |
| Ellanor C. Lawrence Park | 40 |
| Flatlick Stream Valley | 13 |
| Rocky Run Stream Valley | 22 |
| 7 – Ellick Cluster | 63 |
| Ellick Preserve | 14 |
| Cub Run Stream Valley North | 15 |
| Halifax Point District Park | 3 |
| Hickory Forest Park | 4 |
| Horsepen Run Stream Valley | 1 |
| Merrybrook Run Stream Valley | 2 |
| Mountain Road Park | 7 |
| Poplar Ford Park | 9 |
| Rock Hill District Park | 2 |
| Sully Historic Site | 6 |

| Archery | |
|---------------------------------------------------|---------------------------------|
| Cluster Name | Number of Deer Harvested |
| 8- Fairfax Station Cluster | 20 |
| Patriot Park | 4 |
| Piney Branch Stream Valley | 7 |
| Popes Head Park | 7 |
| Rocky Run Stream Valley (Portion) | 0 |
| Willow Pond | 2 |
| 9 – Fountainhead Cluster | 22 |
| Fountainhead Regional Park* | 13 |
| Sandy Run Regional Park* | 9 |
| 10 – Great Falls Cluster | 63 |
| Hickory Run School Site** | 7 |
| Langley Oaks Park | 15 |
| Lexington Estates Park | 3 |
| Pimmit Run Stream Valley | 16 |
| Riverbend Park | 14 |
| Scotts Run Nature Preserve | 5 |
| Windemere Park | 3 |
| 11 – Huntley Meadows | 80 |
| Amberleigh Park | 0 |
| Deerlick Park | 2 |
| Dogue Creek Stream Valley (combined with Huntley) | 0 |
| Fairchild Property** | 0 |
| Holmes Run Stream Valley | 16 |
| Huntley Meadows | 34 |
| Island Creek Park | 3 |
| John Byers Park | 3 |
| Lee District Park | 7 |
| Lillian Carey Park | 8 |
| Little Hunting Creek | 1 |
| Mason District Park | 1 |
| Mount Vernon District Park | 1 |
| Roundtree Park | 4 |
| Woodlawn Park | 0 |
| 12 – Lake Accotink Cluster | 30 |
| Americana Park (combined with Wakefield) | 0 |
| Lake Accotink | 14 |
| Long Branch Stream Valley | 4 |
| Wakefield Park | 12 |

| Archery | |
|-------------------------------------------------|---------------------------------|
| Cluster Name | Number of Deer Harvested |
| 13 – Laurel Hill Cluster | 66 |
| BOS Property Mt. Vernon** | 4 |
| Laurel Hill Park & Golf Course | 13 |
| Mason Neck West | 2 |
| Meadowood Special Recreation Management Area*** | 20 |
| Newington Heights | 0 |
| Noman Cole Plant** | 6 |
| Occoquan Regional Park* | 15 |
| Old Colchester Park & Preserve | 2 |
| Pohick Bay Regional Park* | 4 |
| 14 – Pohick Stream Valley Cluster | 24 |
| Burke Station Park | 0 |
| Cherry Run Park | 0 |
| Crooked Creek Park | 3 |
| Greentree Village Park | 0 |
| Huntsman Lake | 0 |
| Kings Park West | 1 |
| Middle Run Stream Valley Park | 4 |
| Pohick Stream Valley | 16 |
| Shannon Station Park | 0 |
| West Springfield Village Park | 0 |
| 15 – Reston Cluster | 42 |
| Difficult Run Stream Valley (Reston) | 11 |
| Foxvale Park | 1 |
| Fred Crabtree Park | 13 |
| Garnchayne | 3 |
| Little Difficult Run Stream Valley | 4 |
| Oak Marr Park | 5 |
| Tattersall Park | 0 |
| Waples Mill Meadow | 5 |
| 16 – South Run Cluster | 17 |
| Brimstone Park | 0 |
| Burke Lake | 4 |
| Lake Mercer Park | 3 |
| Poburn Woods Park | 3 |
| Sandy Run Stream Valley | 1 |
| South Run District Park | 5 |
| South Run Stream Valley | 1 |
| 17 – Sugarland Run Cluster | 59 |
| Folly Lick Stream Valley | 7 |
| Shaker Woods Park | 4 |
| Sugarland Run Stream Valley | 16 |
| TNC Fraser Preserve**** | 16 |
| Upper Potomac* | 16 |

| Archery | |
|-------------------------------------------|---------------------------------|
| Cluster Name | Number of Deer Harvested |
| 18 - Vienna Cluster | 50 |
| Clarks Crossing Park | 32 |
| Difficult Run Stream Valley (Vienna) | 14 |
| Lahey Lost Valley Park | 2 |
| Tamarack Park | 2 |
| Archery Total for All Properties | 726 |
| FCPA Total | 587 |
| *NOVA Parks Total | 86 |
| **BOS/Other County Total | 17 |
| *** Bureau of Land Management (BLM) Total | 20 |
| **** The Nature Conservancy (TNC) Total | 16 |

| Police Sharpshooting Operations | |
|------------------------------------------------|---------------------------------|
| Park | Number of Deer Harvested |
| Annandale Community Park | 6 |
| Bren Mar Park/Turkeycock Run Stream Valley | 3 |
| Chapel Road Park | 5 |
| Dranesville Tavern/Grand Hamptons Park | 3 |
| Franconia Park/Monticello Woods Park | 3 |
| Frying Pan Farm Park | 11 |
| Green Spring Gardens | 1 |
| Huntley Meadows Park/Dogue Creek Stream Valley | 17 |
| Sharpshooting Total for All Properties | 49 |

| Program Deer Harvest Totals | |
|------------------------------------------------------------|------------|
| FCPA Grand Total - All Methods | 636 |
| NOVA Parks Grand Total – All Methods | 86 |
| TNC Grand Total – All Methods | 16 |
| BOS/Other County Property Grand Total – All Methods | 17 |
| BLM Grand Total – All Methods | 20 |
| Program Grand Total - All Methods | 775 |

FAIRFAX COUNTY DEER MANAGEMENT PROGRAM

FY 2023 PROPOSED DEER MANAGEMENT SITES BY SUPERVISORY DISTRICT



Braddock District
FY 2023 Deer Management Program Proposed Park Sites

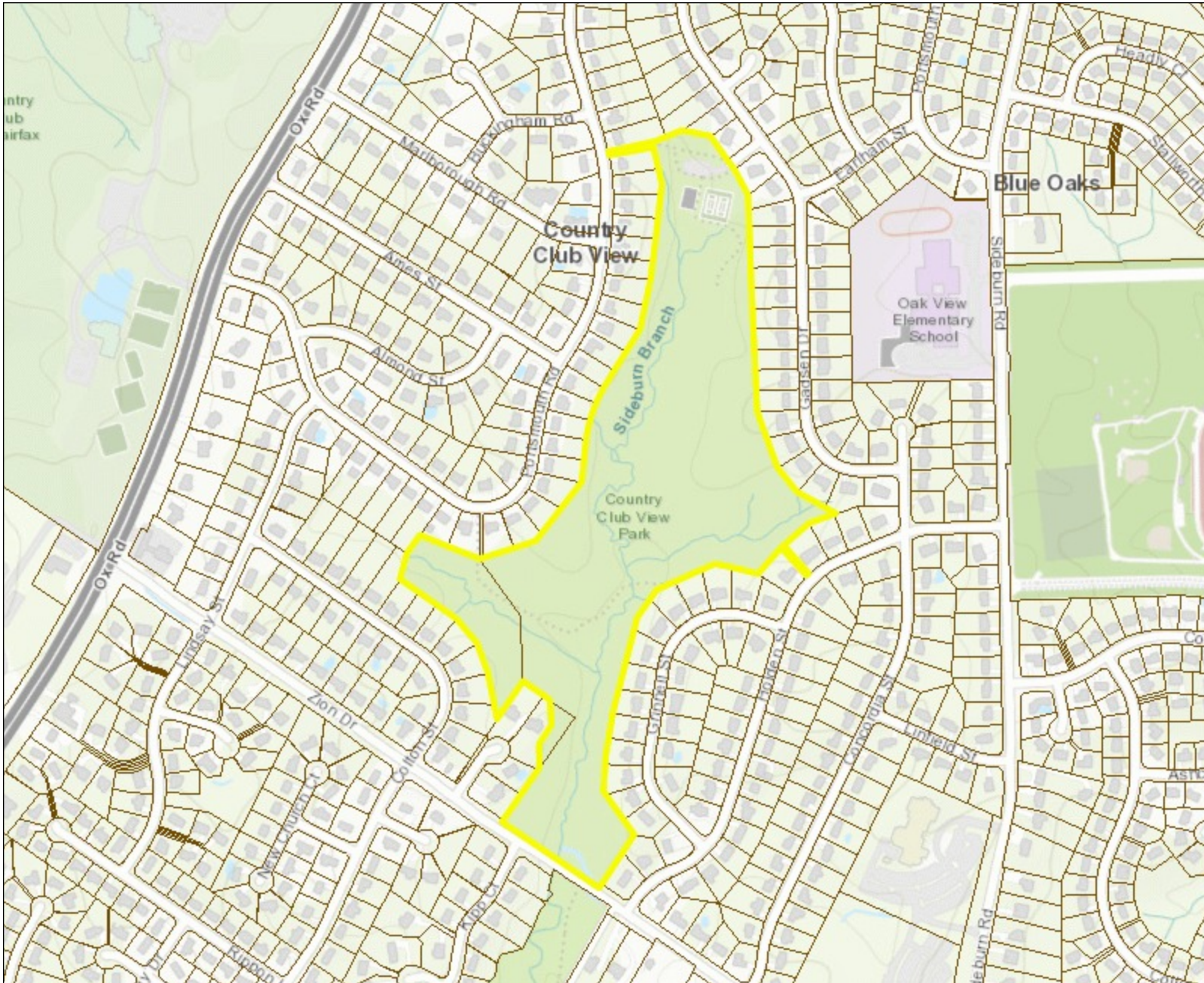
| Park Name | Property Owner | Location | Proposed Methods | Hunt Acreage | Year Added | Harvest FY 17 | Harvest FY 18 | Harvest FY 19 | Harvest FY 20 | Harvest FY 21 | Harvest FY 22 |
|-----------------------------------------------|----------------|-----------------|------------------|--------------|------------|---------------|---------------|---------------|---------------|---------------|---------------|
| PROPOSED ADDITION Country Club View | FCPA | Fairfax | Archery | 39 | FY 2023 | -- | -- | -- | -- | -- | -- |
| PROPOSED ADDITION Fairfax Villa | FCPA | Fairfax | Archery | 60 | FY 2023 | -- | -- | -- | -- | -- | -- |
| Accotink Stream Valley Park | FCPA | Springfield | Archery | 405 | FY 2012 | 27 | 20 | 9 | 16 | 33 | 22 |
| Americana Park ¹ | FCPA | Burke | Archery | 4 | FY 2012 | -- | -- | -- | -- | -- | 0 |
| Carrleigh Parkway Park ² | FCPA | Springfield | Archery | 10 | FY 2014 | -- | -- | -- | -- | 5 | 0 |
| Crooked Creek Park | FCPA | Fairfax | Archery | 12 | FY 2016 | 1 | 7 | 3 | 3 | 6 | 3 |
| Kings Park West Park | FCPA | Fairfax | Archery | 19 | FY 2016 | 9 | 3 | 4 | 3 | 6 | 1 |
| Lake Accotink Park | FCPA | Burke | Archery | 407 | FY 2012 | 14 | 11 | 13 | 22 | 7 | 14 |
| Long Branch Stream Valley | FCPA | Annandale | Archery | 90 | FY 2016 | 6 | 3 | 3 | 3 | 8 | 4 |
| Piney Branch Stream Valley | FCPA | Fairfax Station | Archery | 140 | FY 2014 | 9 | 12 | 15 | 10 | 13 | 7 |
| Pohick Stream Valley Park | FCPA | Springfield | Archery | 580 | FY 2012 | 24 | 34 | 20 | 22 | 12 | 16 |
| Wakefield Park | FCPA | Burke | Archery | 161 | FY 2012 | 8 | 7 | 1 | 5 | 3 | 12 |

¹Harvests for Americana Park are combined with Wakefield Park.

²Harvests for Carrleigh Parkway are combined with Lake Accotink for FY17-FY20.



Country Club View Park

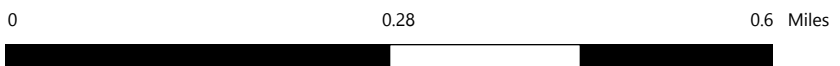


Legend

- Parcels
- Fairfax County Border

Notes:

Proposed for FY23 Deer Management Program - Archery



This map is intended for reference purposes only. Fairfax County does not provide any guarantee of the accuracy or completeness regarding the map information.



Map produced: 5/4/2022



Country Club View Park



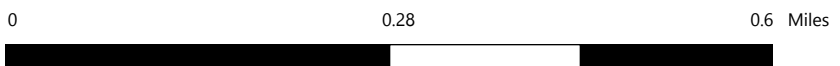
Legend

-  Parcels
-  Fairfax County Border

Notes:

Proposed for FY23 Deer Management Program - Archery

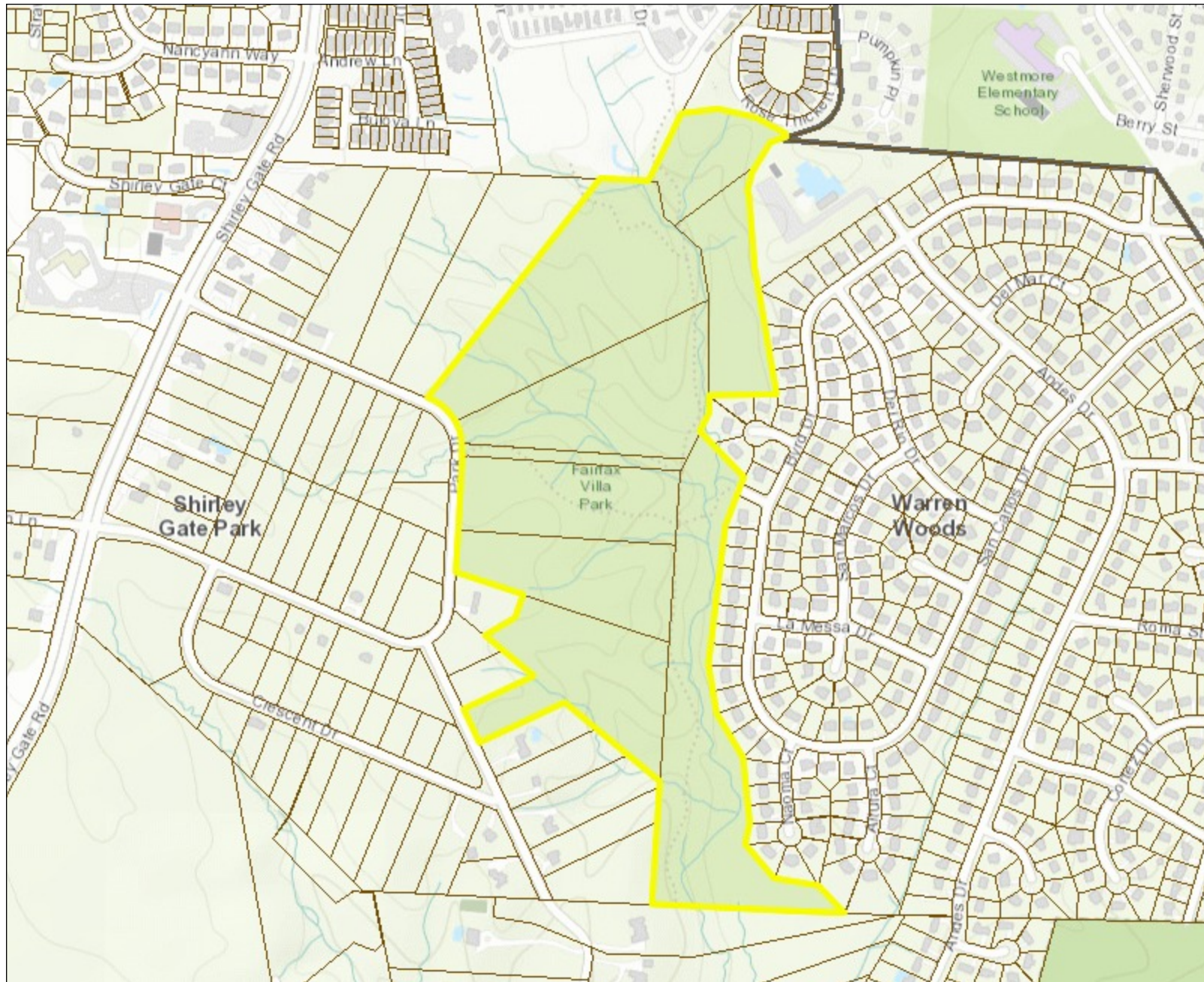
Map produced: 5/4/2022



This map is intended for reference purposes only. Fairfax County does not provide any guarantee of the accuracy or completeness regarding the map information.

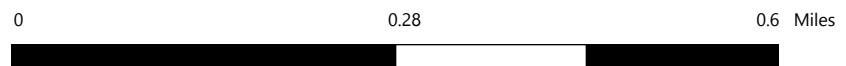


Fairfax Villa Park



- Legend**
- Parcels
 - Fairfax County Border

Notes:
 Proposed for FY23 Deer Management Program - Archery



This map is intended for reference purposes only. Fairfax County does not provide any guarantee of the accuracy or completeness regarding the map information.



Map produced: 5/4/2022



Fairfax Villa Park



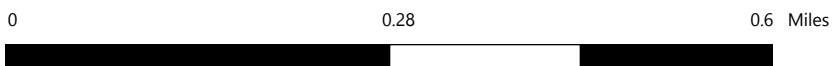
Legend

-  Parcels
-  Fairfax County Border

Notes:

Proposed for FY23 Deer Management Program - Archery

Map produced: 5/4/2022



This map is intended for reference purposes only. Fairfax County does not provide any guarantee of the accuracy or completeness regarding the map information.

Dranesville District
FY 2023 Deer Management Program Proposed Park Sites

| Property Name | Property Owner | Location | Proposed Methods | Hunt Acreage | Year Added | Harvest FY 17 | Harvest FY 18 | Harvest FY 19 | Harvest FY 20 | Harvest FY 21 | Harvest FY 22 |
|------------------------------------|------------------------|-------------|------------------|--------------|------------|---------------|---------------|---------------|---------------|---------------|---------------|
| Dranesville Tavern | FCPA | Herndon | Sharpshooting | 14 | FY 2022 | -- | -- | -- | -- | -- | 3 |
| Grand Hamptons Park | FCPA | Herndon | Sharpshooting | 5 | FY 2022 | -- | -- | -- | -- | -- | 0 |
| Folly Lick Stream Valley | FCPA | Herndon | Archery | 32 | FY 2016 | 13 | 21 | 6 | 5 | 11 | 7 |
| Fraser Preserve | The Nature Conservancy | Great Falls | Archery | 233 | FY 2017 | 26 | 29 | 12 | 12 | 14 | 16 |
| Hickory Run School Site | BOS | Great Falls | Archery | 11 | FY 2016 | 2 | 2 | 1 | 1 | 11 | 7 |
| Langley Oaks Park | FCPA | Mclean | Archery | 102 | FY 2016 | 5 | 6 | 9 | 7 | 7 | 15 |
| Lexington Estates Park | FCPA | Great Falls | Archery | 15 | FY 2016 | 5 | 5 | 7 | 2 | 12 | 3 |
| Merrybrook Run Stream Valley | FCPA | Herndon | Archery | 11 | FY 2017 | 7 | 4 | 1 | 0 | 2 | 2 |
| Pimmit Run Stream Valley | FCPA | McLean | Archery | 43 | FY 2017 | 29 | 19 | 11 | 10 | 13 | 16 |
| Riverbend Park | FCPA | McLean | Archery | 394 | FY 2012 | 17 | 19 | 24 | 10 | 19 | 14 |
| Scotts Run Nature Preserve | FCPA | McLean | Archery | 379 | FY 2013 | 3 | 5 | 6 | 3 | 3 | 5 |
| Shaker Woods Park | FCPA | Herndon | Archery | 14 | FY 2015 | 5 | 4 | 4 | 0 | 5 | 4 |
| Sugarland Run Stream Valley | FCPA | Herndon | Archery | 200 | FY 2012 | 36 | 43 | 18 | 23 | 12 | 16 |
| Windemere Park | FCPA | Great Falls | Archery | 24 | FY 2017 | 5 | 1 | 5 | 6 | 3 | 3 |
| Upper Potomac/Seneca Regional Park | NOVA Parks | Great Falls | Archery | 646 | FY 2016 | 22 | 35 | 14 | 21 | 19 | 16 |

No new park additions proposed for the Dranesville District in FY 2023. All proposed parks have already been included in the Deer Management Program in previous years.

Hunter Mill District
FY 2023 Deer Management Program Proposed Park Sites

| Park Name | Property Owner | Location | Proposed Methods | Hunt Acreage | Year Added | Harvest FY 17 | Harvest FY 18 | Harvest FY 19 | Harvest FY 20 | Harvest FY 21 | Harvest FY 22 |
|------------------------------------------------------------------------|----------------|-------------|------------------|--------------|---------------------|---------------|---------------|---------------|---------------|---------------|---------------|
| PROPOSED ADDITION Old Courthouse Spring Branch Stream Valley | FCPA | Vienna | Archery | 33 | FY 2023 | -- | -- | -- | -- | -- | -- |
| PROPOSED ADDITION Raglan Road | FCPA | Vienna | Archery | 8 | FY 2023 | -- | -- | -- | -- | -- | -- |
| PROPOSED ADDITION Meadowlark Botanical Gardens | NOVA Parks | Vienna | Sharpshooting | 95 | FY 2023 | -- | -- | -- | -- | -- | -- |
| Clarks Crossing Park | FCPA | Vienna | Archery | 124 | FY 2012 | 24 | 29 | 13 | 19 | 22 | 32 |
| Colvin Run Mill Park | FCPA | Great Falls | Archery | 58 | FY 2010 | 6 | 3 | 17 | 19 | 8 | 4 |
| Colvin Run Stream Valley | FCPA | Great Falls | Archery | 44 | FY 2010 | 8 | 9 | 6 | 6 | 5 | 5 |
| Difficult Run Stream Valley Park (Colvin) | FCPA | Great Falls | Archery | 285 | FY 2011 | 38 | 10 | 10 | 18 | 9 | 7 |
| Difficult Run Stream Valley Park (Vienna) | FCPA | Vienna | Archery | 237 | FY 2011 | 15 | 25 | 16 | 18 | 13 | 14 |
| Fred Crabtree Park | FCPA | Herndon | Archery | 208 | FY 2014 | 18 | 10 | 4 | 11 | 21 | 13 |
| Frying Pan Farm Park | FCPA | Herndon | Sharpshooting | 136 | FY 2015 | 13 | -- | -- | -- | 10 | 11 |
| Horsepen Run Stream Valley | FCPA | Vienna | Archery | 64 | FY 2017 | 2 | 13 | 8 | 9 | 5 | 1 |
| Lahey Lost Valley Park | FCPA | Vienna | Archery | 23 | FY 2012 | 2 | 1 | 3 | 4 | 2 | 2 |
| Lake Fairfax | FCPA | Reston | Archery | 244 | FY 2007; FY 2011 | 8 | 15 | 8 | 12 | 16 | 10 |
| Little Difficult Run Stream Valley | FCPA | Reston | Archery | 63 | FY 2018 | -- | 15 | 12 | 2 | 10 | 4 |
| Tamarack Park | FCPA | Vienna | Archery | 21 | FY 2012 | 6 | 1 | 0 | 0 | 0 | 2 |
| Wolf Trap Stream Valley Park | FCPA | Vienna | Archery | 48 | FY 2016 | 8 | 3 | 5 | 7 | 2 | 1 |



Old Courthouse Spring Branch Stream Valley and Raglan Road Park



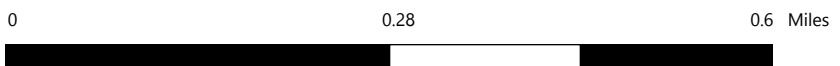
Legend

- Parcels
- Fairfax County Border

Notes:

Proposed for FY23 Deer Management Program - Archery

Map produced: 5/4/2022





This map is intended for reference purposes only. Fairfax County does not provide any guarantee of the accuracy or completeness regarding the map information.



Old Courthouse Spring Branch Stream Valley and Raglan Road Park

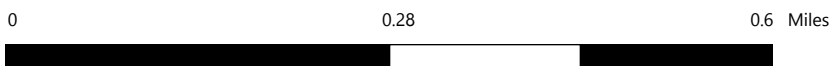


Legend

-  Parcels
-  Fairfax County Border

Notes:

Proposed for FY23 Deer Management Program - Archery

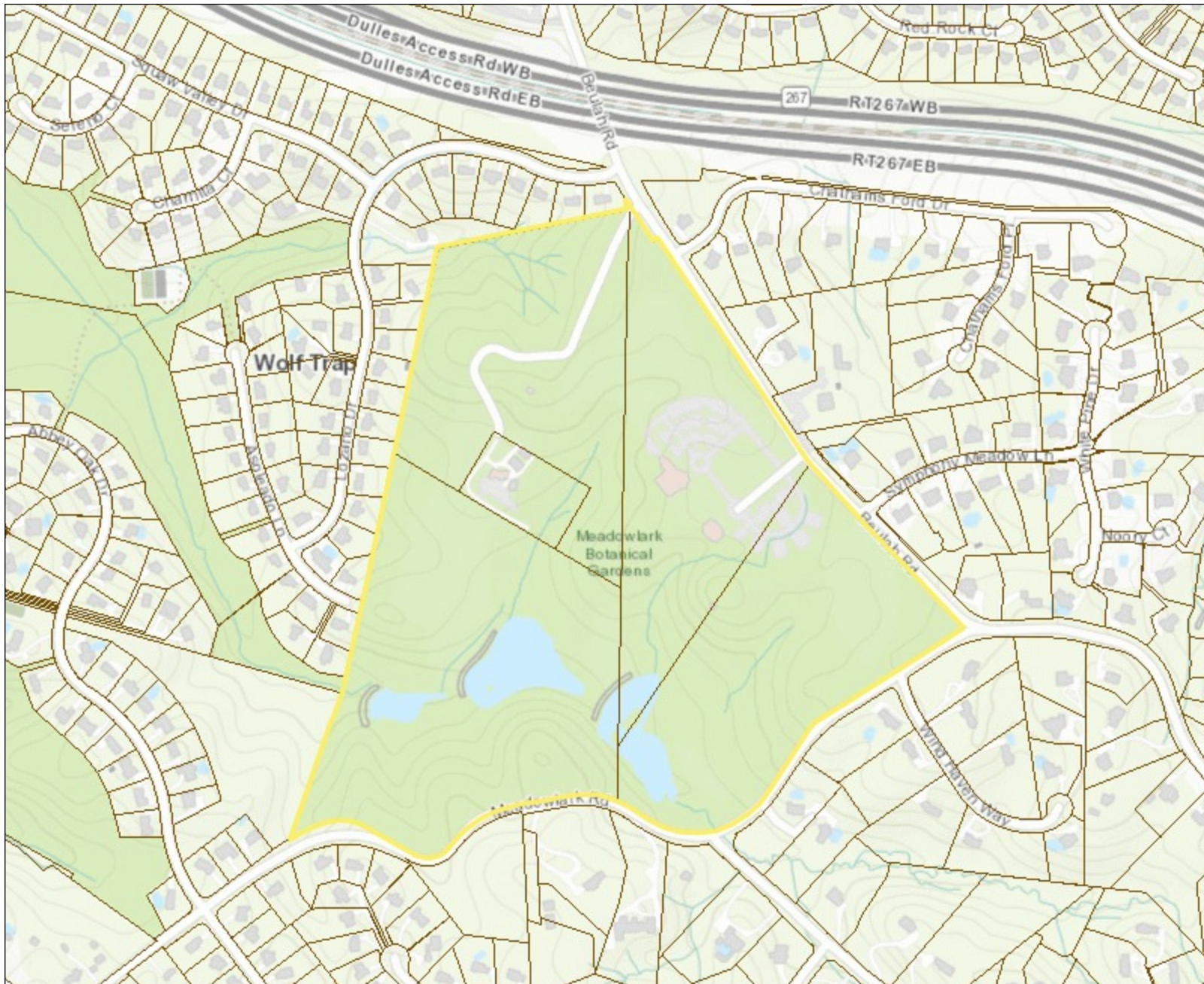


This map is intended for reference purposes only. Fairfax County does not provide any guarantee of the accuracy or completeness regarding the map information.

Map produced: 5/4/2022



Meadowlark Botanical Gardens

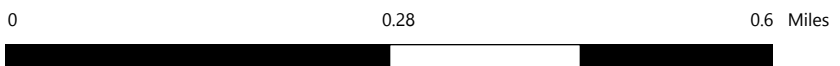


Legend

- Parcels
- Fairfax County Border

Notes:

Proposed for FY23 Deer Management Program - Sharpshooting

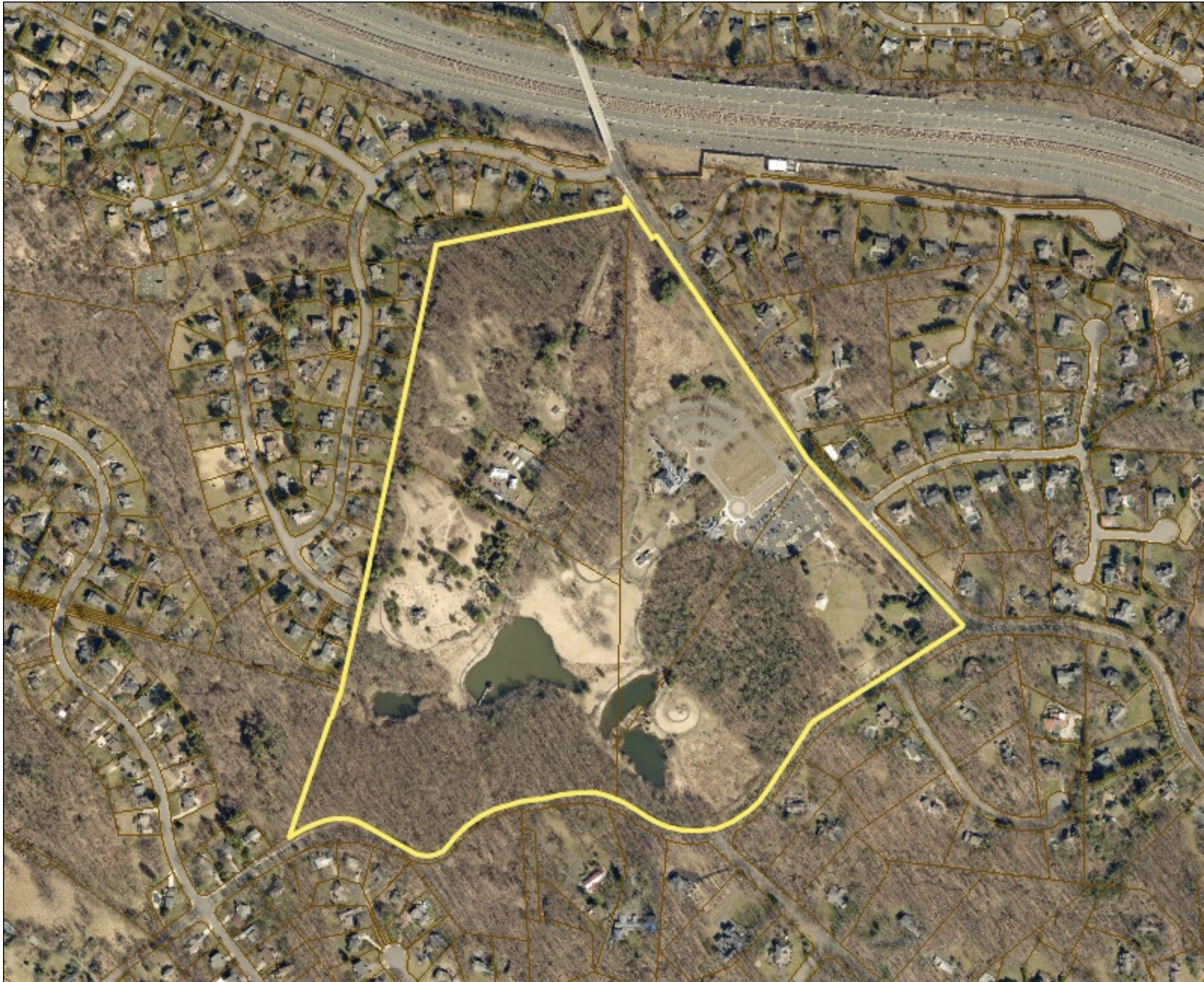


This map is intended for reference purposes only. Fairfax County does not provide any guarantee of the accuracy or completeness regarding the map information.

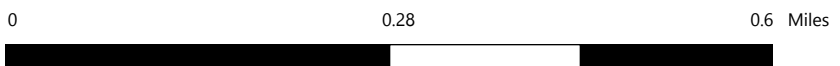
Map produced: 5/4/2022



Meadowlark Botanical Gardens



- Legend**
- Parcels
 - Fairfax County Border



This map is intended for reference purposes only. Fairfax County does not provide any guarantee of the accuracy or completeness regarding the map information.

Notes:
Proposed for FY23 Deer Management Program - Sharpshooting

Map produced: 5/4/2022

Lee District
FY 2023 Deer Management Program Proposed Park Sites

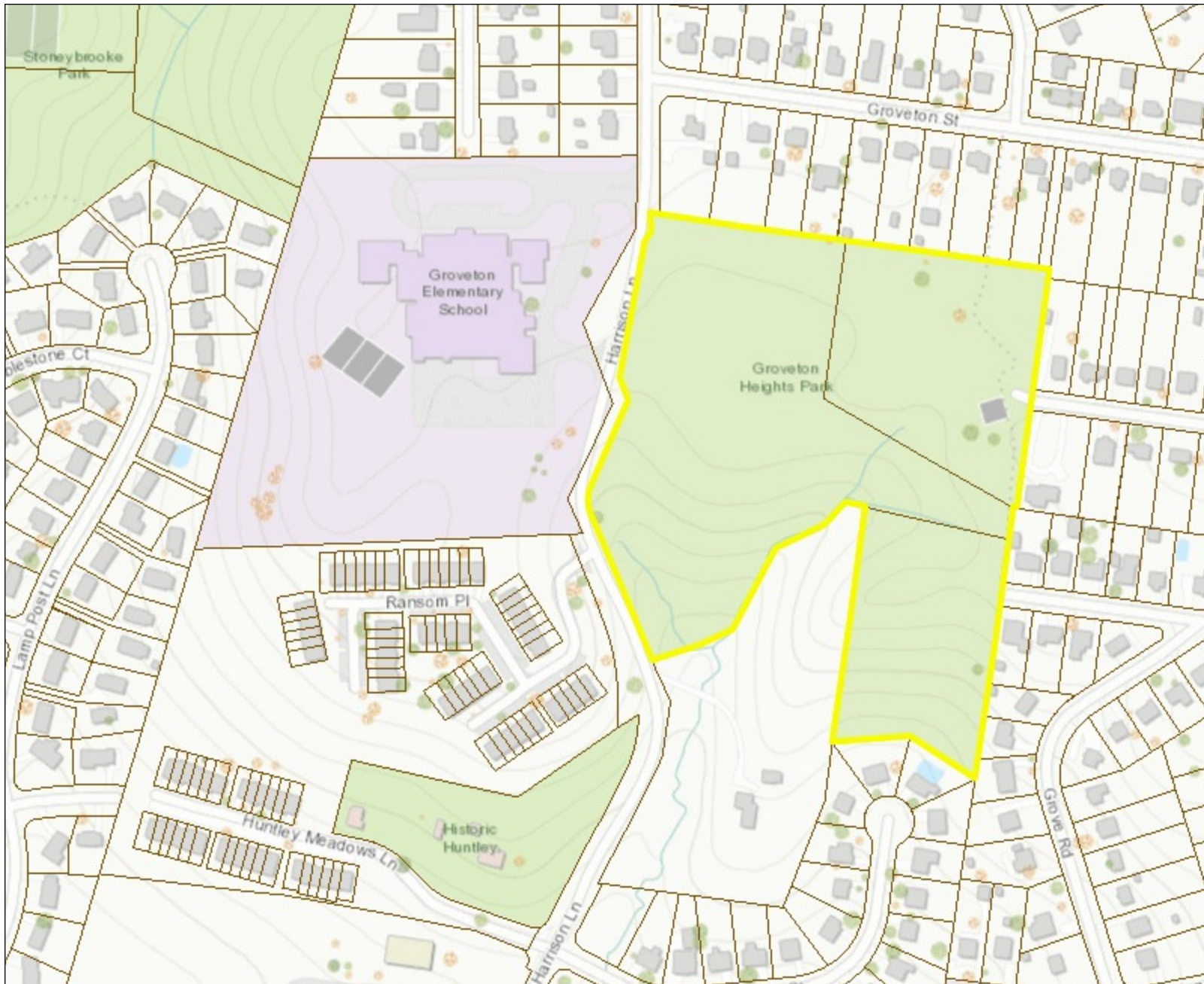
| Park Name | Property Owner | Location | Proposed Methods | Hunt Acreage | Year Added | Harvest FY 17 | Harvest FY 18 | Harvest FY 19 | Harvest FY 20 | Harvest FY 21 | Harvest FY 22 |
|----------------------------------------------|----------------|-------------|---------------------------|--------------|------------|---------------|---------------|---------------|---------------|---------------|---------------|
| PROPOSED ADDITION Groveton Heights | FCPA | Alexandria | Archery | 16 | FY 2023 | -- | -- | -- | -- | -- | -- |
| PROPOSED ADDITION Loisdale Park | FCPA | Springfield | Archery | 37 | FY 2023 | -- | -- | -- | -- | -- | -- |
| PROPOSED ADDITION Ridgeview Park | FCPA | Alexandria | Archery | 24 | FY 2023 | -- | -- | -- | -- | -- | -- |
| Franconia Park | FCPA | Springfield | Sharpshooting | 62 | FY 2022 | -- | -- | -- | -- | -- | 3 |
| Monticello Woods Park | FCPA | Springfield | Sharpshooting | 13 | FY 2022 | -- | -- | -- | -- | -- | 0 |
| Accotink Stream Valley | FCPA | Springfield | Archery | 405 | FY 2012 | 27 | 20 | 9 | 16 | 33 | 22 |
| Amberleigh Park | FCPA | Alexandria | Archery | 18 | FY 2015 | 4 | 1 | 1 | 0 | 0 | 0 |
| Brookfield Park | FCPA | Springfield | Archery | 19 | FY 2014 | 1 | 0 | 3 | 3 | 2 | 0 |
| Byron Avenue Park (Access only) | FCPA | Springfield | Archery | - | FY 2012 | -- | -- | -- | -- | -- | -- |
| Dogue Creek Stream Valley ¹ | FCPA | Alexandria | Archery | 21 | FY 2016 | 1 | -- | -- | -- | -- | 0 |
| Hunter Village Park ² | FCPA | Springfield | Archery | 20 | FY 2014 | 1 | 0 | 3 | 1 | 0 | 0 |
| Huntley Meadows ¹ | FCPA | Alexandria | Archery/ Sharpshooting | 778 | FY 2011 | 49 | 62 | 66 | 70 | 42 | 51 |
| Island Creek Park | FCPA | Alexandria | Archery | 96 | FY 2015 | 6 | 6 | 3 | 4 | 3 | 3 |
| Lee District Park | FCPA | Alexandria | Archery | 77 | FY 2015 | 1 | -- | -- | 7 | 4 | 7 |

¹Huntley Meadows Park: FY 2023 archery season will conclude in January and be followed by sharpshooting in the late season (February/March). FY 2022 harvest (34 deer harvested from archery; 17 deer harvested from sharpshooting). Dogue Creek Stream Valley harvests are included in the Huntley Meadows total.

²Hunter Village Park – Following the county’s redistricting, this park is now a part of the Lee District (was formerly within the Springfield District). It will be included in the deer management park list for the Lee District starting in FY 2023.



Groveton Heights Park



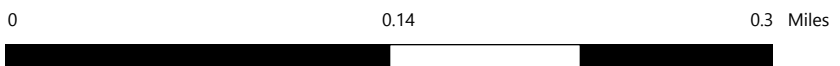
Legend

- Parcels
- Fairfax County Border

Notes:

Proposed for FY23 Deer Management Program - Archery

Map produced: 5/4/2022





This map is intended for reference purposes only. Fairfax County does not provide any guarantee of the accuracy or completeness regarding the map information.



Groveton Heights Park

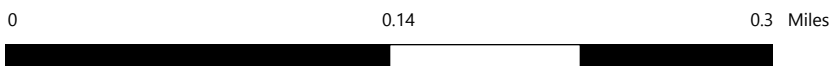


Legend

-  Parcels
-  Fairfax County Border

Notes:

Proposed for FY23 Deer Management Program - Archery

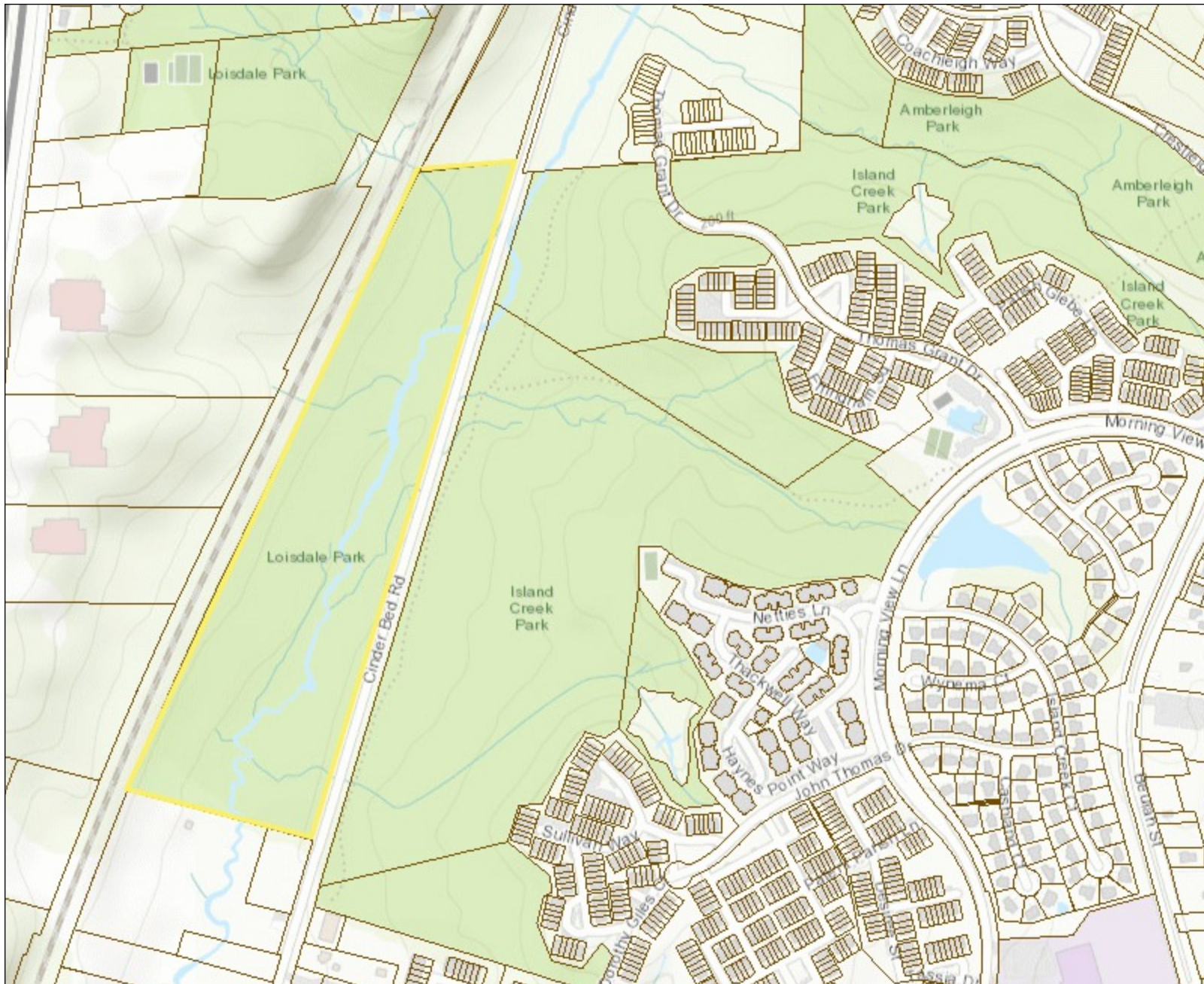


This map is intended for reference purposes only. Fairfax County does not provide any guarantee of the accuracy or completeness regarding the map information.

Map produced: 5/4/2022



Loisdale Park



Legend

- Parcels
- Fairfax County Border

0 0.28 0.6 Miles



This map is intended for reference purposes only. Fairfax County does not provide any guarantee of the accuracy or completeness regarding the map information.

Notes:

Proposed for FY23 Deer Management Program - Archery; Only section adjacent to Island Creek Park



Map produced: 5/4/2022



Loisdale Park

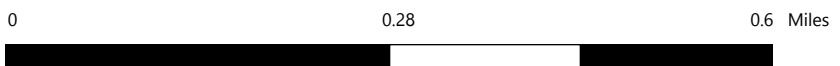


Legend

-  Parcels
-  Fairfax County Border

Notes:

Proposed for FY23 Deer Management Program - Archery; Only section adjacent to Island Creek Park

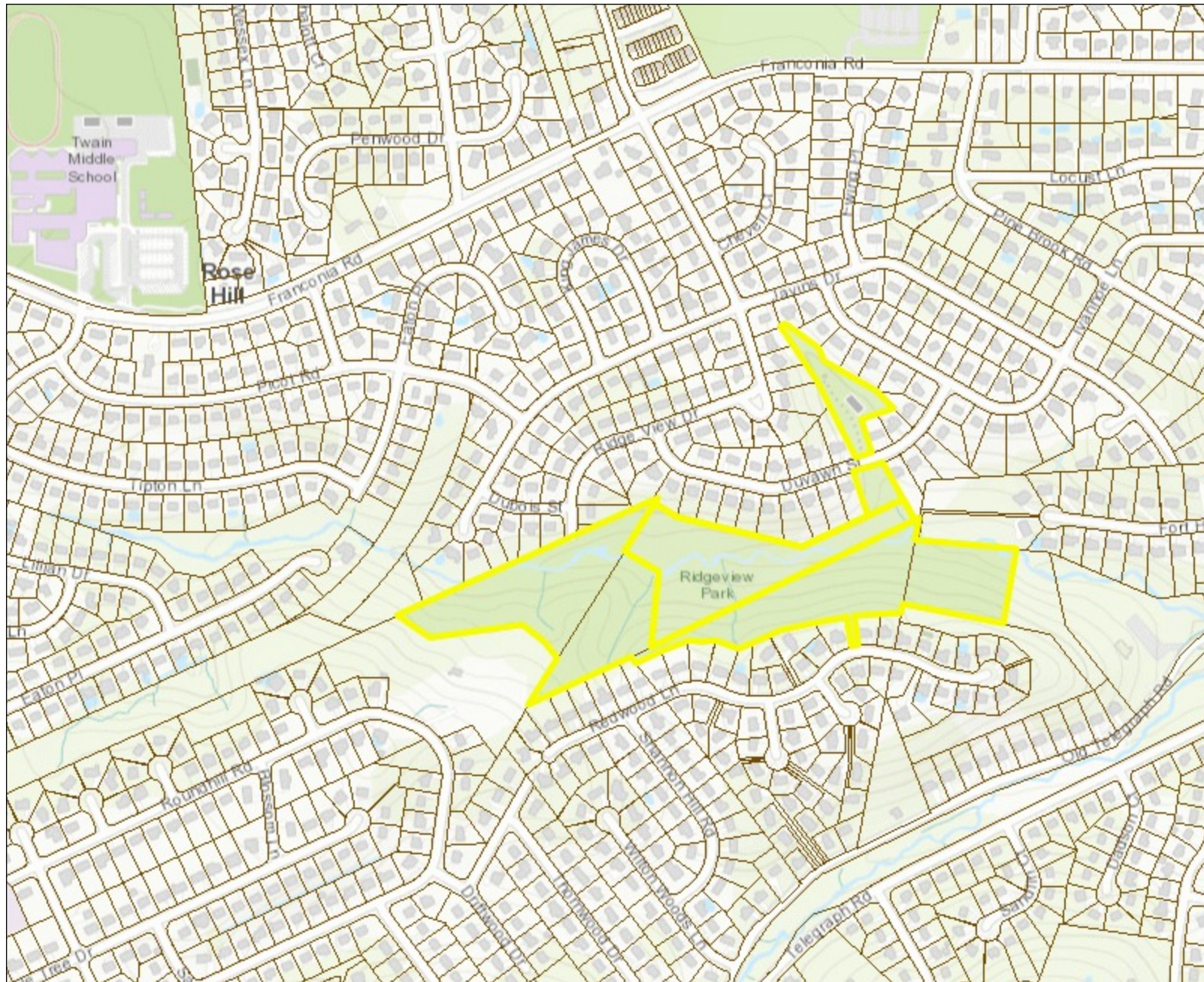


This map is intended for reference purposes only. Fairfax County does not provide any guarantee of the accuracy or completeness regarding the map information.

Map produced: 5/4/2022



Ridgeview Park



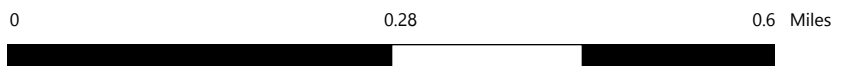
Legend

- Parcels
- Fairfax County Border

Notes:

Proposed for FY23 Deer Management Program - Archery

Map produced: 5/4/2022





This map is intended for reference purposes only. Fairfax County does not provide any guarantee of the accuracy or completeness regarding the map information.



Ridgeview Park

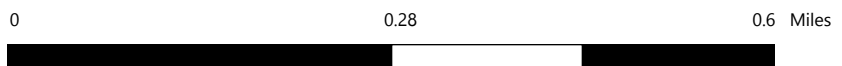


Legend

-  Parcels
-  Fairfax County Border

Notes:

Proposed for FY23 Deer Management Program - Archery



This map is intended for reference purposes only. Fairfax County does not provide any guarantee of the accuracy or completeness regarding the map information.

Map produced: 5/4/2022

Mason District
FY 2023 Deer Management Program Proposed Park Sites

| Park Name | Property Owner | Location | Proposed Methods | Hunt Acreage | Year Added | Harvest FY 17 | Harvest FY 18 | Harvest FY 19 | Harvest FY 20 | Harvest FY 21 | Harvest FY 22 |
|--------------------------------------------|----------------|----------------------------|------------------|--------------|--------------|---------------|---------------|---------------|---------------|---------------|---------------|
| Accotink Stream Valley | FCPA | Annandale | Archery | 251 | FY 2012 | 27 | 20 | 9 | 16 | 33 | 22 |
| Annandale Community Park | FCPA | Annandale | Sharpshooting | 52 | FY 2016 | 11 | 6 | 6 | 8 | 12 | 6 |
| Bren Mar Park/Turkeycock Run Stream Valley | FCPA | Alexandria | Sharpshooting | 70 | FY 2016 | 14 | -- | -- | 9 | 5 | 3 |
| Deerlick Park | FCPA | Alexandria | Archery | 19 | FY 2017 | 0 | 0 | 1 | 1 | 0 | 2 |
| Green Spring Gardens | FCPA | Alexandria | Sharpshooting | 31 | FY 2010 | 5 | 1 | -- | 10 | 1 | 1 |
| Holmes Run Stream Valley | FCPA | Annandale/ Falls Church | Archery | 80 | FY 2014/2018 | 0 | 22 | 19 | 21 | 7 | 16 |
| Lillian Carey Park | FCPA | Annandale/ Falls Church | Archery | 54 | FY 2014 | 3 | 5 | 7 | 14 | 10 | 8 |
| Mason District Park | FCPA | Annandale/ Falls Church | Archery | 80 | FY 2014 | 4 | 3 | 7 | 2 | 4 | 1 |
| Roundtree Park | FCPA | Annandale/ Falls Church | Archery | 61 | FY 2014 | 16 | 2 | 0 | 7 | 6 | 4 |

No new park additions proposed for the Mason District in FY 2023. All proposed parks have already been included in the Deer Management Program in previous years.

Mount Vernon District
FY 2023 Deer Management Program Proposed Park Sites

| Park Name | Property Owner | Location | Proposed Methods | Hunt Acreage | Year Added | Harvest FY 17 | Harvest FY 18 | Harvest FY 19 | Harvest FY 20 | Harvest FY 21 | Harvest FY 22 |
|------------------------------------------------------------------|----------------|------------|---------------------------|--------------|-----------------------------------------------------|---------------|---------------|---------------|---------------|---------------|---------------|
| PROPOSED ADDITION Grist Mill Park ¹ | FCPA | Alexandria | Archery | 48 | FY 2023 | 0 | -- | -- | -- | -- | -- |
| PROPOSED ADDITION Kirk Park (portion) | FCPA | Alexandria | Archery | 7 | FY 2023 | -- | -- | -- | -- | -- | -- |
| PROPOSED ADDITION Paul Springs Stream Valley (portion) | FCPA | Alexandria | Archery | 20 | FY 2023 | -- | -- | -- | -- | -- | -- |
| PROPOSED ADDITION Pole Road Park | FCPA | Alexandria | Archery | 50 | FY 2023 | -- | -- | -- | -- | -- | -- |
| BOS-Mt. Vernon | BOS | Lorton | Archery | 231 | FY 2017 | 17 | 15 | 14 | 10 | 6 | 4 |
| Colonel John Byers Park | FCPA | Alexandria | Archery | 25 | FY 2018 | -- | 6 | 5 | 4 | 4 | 3 |
| Fairchild Property | BOS | Alexandria | Archery | 8 | FY 2017 | 1 | 0 | 0 | 0 | 0 | 0 |
| Huntley Meadows ² | FCPA | Alexandria | Archery/ Sharpshooting | 778 | FY 2011 | 49 | 62 | 66 | 70 | 42 | 51 |
| Laurel Hill & Golf Course | FCPA | Lorton | Archery | 1149 | FY 2010 | 44 | 44 | 40 | 32 | 21 | 13 |
| Little Hunting Creek | FCPA | Alexandria | Archery | 10 | FY 2018 | -- | 0 | 0 | 0 | 0 | 1 |
| Mason Neck West | FCPA | Lorton | Archery | 44 | FY 2015 (sharpshooting); FY 2016 (archery) | 7 | 6 | 6 | 7 | 2 | 2 |
| Meadowood Special Recreation Management Area | BLM | Lorton | Archery | 805 | FY 2021 | -- | -- | -- | -- | 37 | 20 |
| Mount Vernon District Park | FCPA | Alexandria | Archery | 88 | FY 2018 | -- | 10 | 3 | 4 | 2 | 1 |
| Newington Heights | FCPA | Lorton | Archery | 54 | FY 2013 | 3 | 1 | 0 | 2 | 0 | 0 |

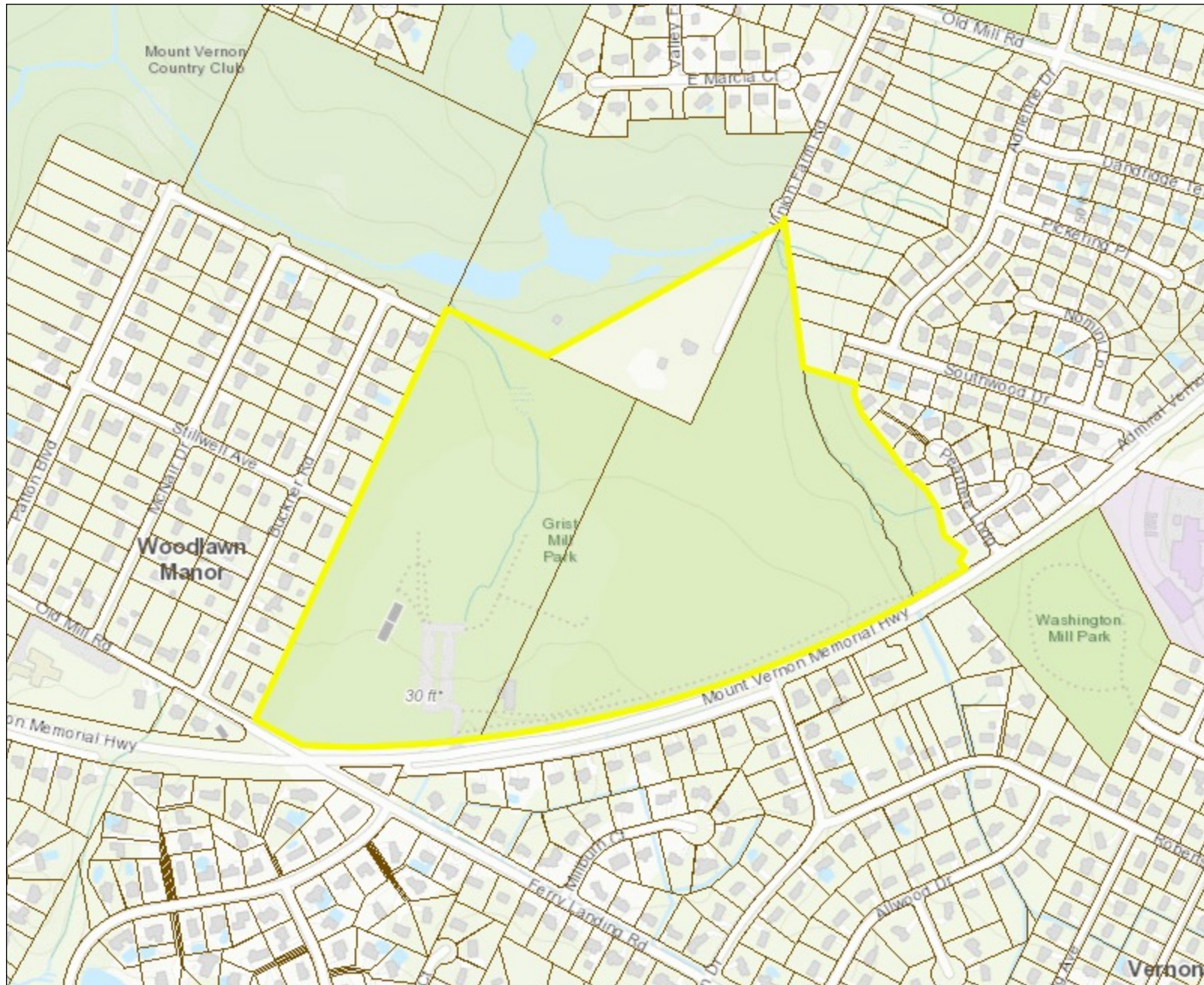
| Park Name | Property Owner | Location | Proposed Methods | Hunt Acreage | Year Added | Harvest FY 17 | Harvest FY 18 | Harvest FY 19 | Harvest FY 20 | Harvest FY 21 | Harvest FY 22 |
|------------------------------------|----------------|-------------|------------------|--------------|------------|---------------|---------------|---------------|---------------|---------------|---------------|
| Noman M. Cole, Jr. Pollution Plant | DPWES | Lorton | Archery | 103 | FY 2017 | 12 | 4 | 1 | 3 | 6 | 6 |
| Occoquan Regional Park | NOVA Parks | Lorton | Archery | 200 | FY 2020 | -- | -- | -- | 26 | 4 | 15 |
| Old Colchester Park & Preserve | FCPA | Lorton | Archery | 144 | FY 2013 | 8 | 5 | 5 | 6 | 2 | 2 |
| Pohick Bay Regional | NOVA Parks | Lorton | Archery | 339 | FY 2014 | 8 | 11 | 7 | 6 | 2 | 4 |
| Pohick Stream Valley | FCPA | Springfield | Archery | 559 | FY 2012 | 24 | 34 | 20 | 22 | 12 | 16 |
| South Run Stream Valley | FCPA | Springfield | Archery | 271 | FY 2011 | 9 | 10 | 1 | 6 | 3 | 1 |
| Woodlawn | FCPA | Alexandria | Archery | 9 | FY 2016 | 5 | 5 | 3 | 2 | 0 | 0 |

¹Grist Mill Park: Grist Mill was previously included in the Deer Management Program for sharpshooting from FY 2016 – FY 2017.

²Huntley Meadows Park: FY 2023 archery season will conclude in January and be followed by sharpshooting in the late season (February/March). FY 2022 harvest (34 deer harvested from archery; 17 deer harvested from sharpshooting). Dogue Creek Stream Valley harvests are included in the Huntley Meadows total.



Grist Mill Park

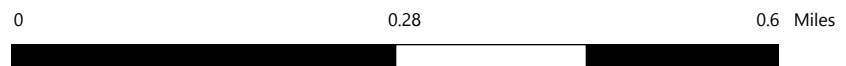


Legend

- Parcels
- Fairfax County Border

Notes:

Proposed for FY23 Deer Management Program - Archery (wooded acreage)



This map is intended for reference purposes only. Fairfax County does not provide any guarantee of the accuracy or completeness regarding the map information.



Map produced: 5/4/2022



Grist Mill Park

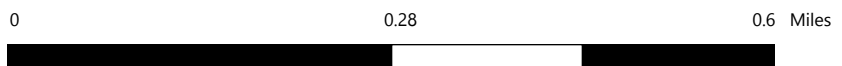


Legend

-  Parcels
-  Fairfax County Border

Notes:

Proposed for FY23 Deer Management Program - Archery (wooded acreage)



This map is intended for reference purposes only. Fairfax County does not provide any guarantee of the accuracy or completeness regarding the map information.



Map produced: 5/4/2022



Paul Springs Stream Valley Park and Kirk Park



Legend

-  Parcels
-  Fairfax County Border

0 0.14 0.3 Miles



This map is intended for reference purposes only. Fairfax County does not provide any guarantee of the accuracy or completeness regarding the map information.

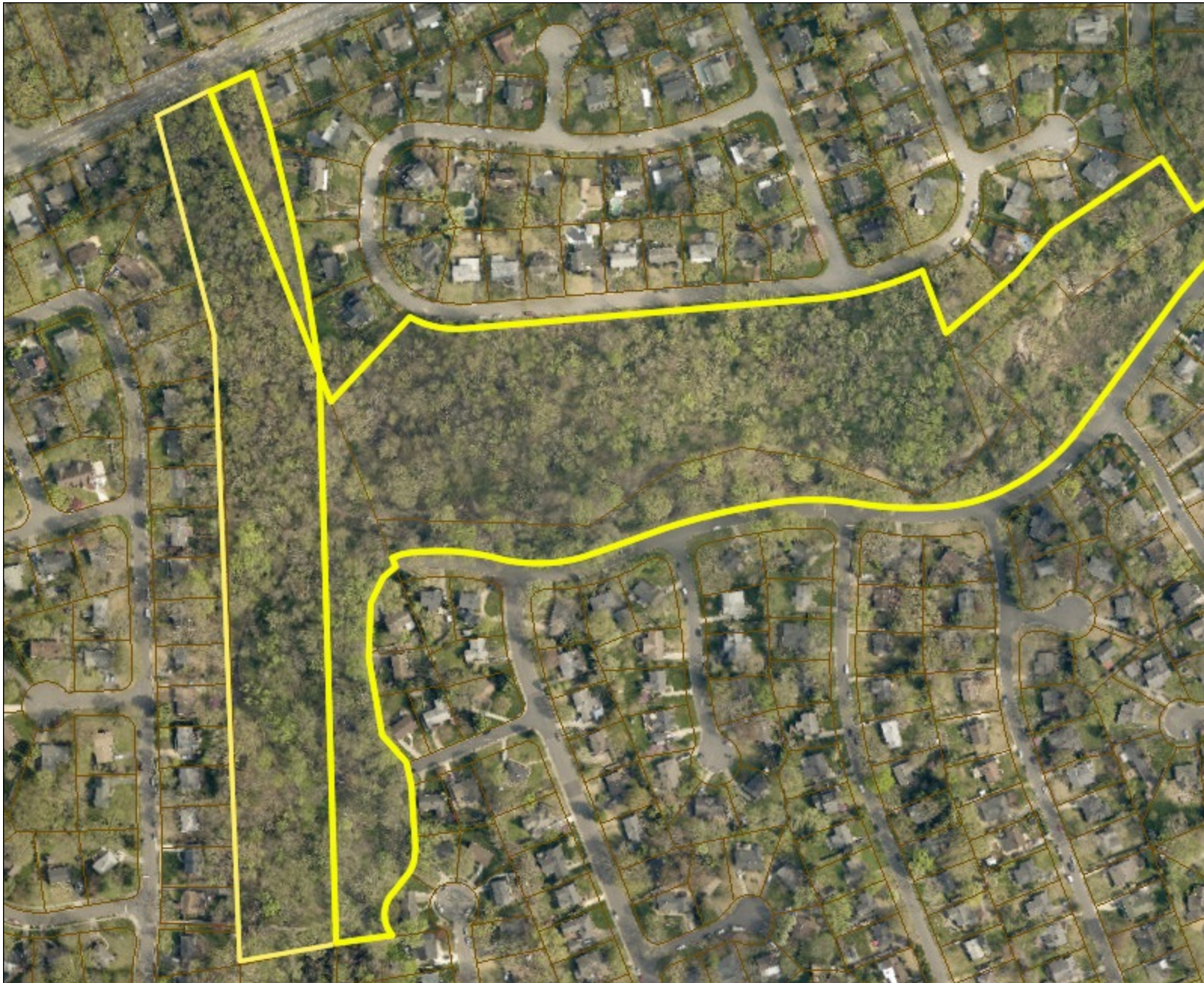
Notes:

Proposed for FY23 Deer Management Program - Archery (only includes portion of both parks)



Map produced: 5/4/2022



Paul Springs Stream Valley and Kirk Park

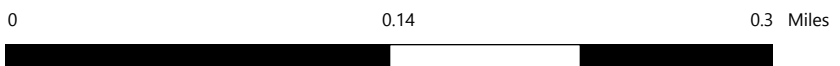


Legend

-  Parcels
-  Fairfax County Border

Notes:

Proposed for FY23 Deer Management Program - Archery



This map is intended for reference purposes only. Fairfax County does not provide any guarantee of the accuracy or completeness regarding the map information.



Map produced: 5/4/2022



Pole Road Park



Legend

-  Parcels
-  Fairfax County Border

0 0.28 0.6 Miles



This map is intended for reference purposes only. Fairfax County does not provide any guarantee of the accuracy or completeness regarding the map information.

Notes:

Proposed for FY23 Deer Management Program - Archery



Map produced: 5/4/2022



Pole Road Park



Legend

-  Parcels
-  Fairfax County Border

0 0.28 0.6 Miles



This map is intended for reference purposes only. Fairfax County does not provide any guarantee of the accuracy or completeness regarding the map information.

Notes:

Proposed for FY23 Deer Management Program - Archery

Map produced: 5/4/2022

Providence District

FY 2023 Deer Management Program Proposed Park Sites

| Park Name | Property Owner | Location | Proposed Methods | Hunt Acreage | Year Added | Harvest FY 17 | Harvest FY 18 | Harvest FY 19 | Harvest FY 20 | Harvest FY 21 | Harvest FY 22 |
|--------------------------------------|----------------|--------------|------------------|--------------|------------|---------------|---------------|---------------|---------------|---------------|---------------|
| Accotink Stream Valley | FCPA | Annandale | Archery | 251 | FY 2012 | 27 | 20 | 9 | 16 | 33 | 22 |
| Difficult Run Stream Valley (Reston) | FCPA | Herndon | Archery | 258 | FY 2011 | 15 | 3 | 12 | 9 | 14 | 11 |
| Eakin Community Park | FCPA | Annandale | Archery | 33 | FY 2012 | 10 | 6 | 10 | 11 | 11 | 5 |
| Eakin Park (Mantua Section) | FCPA | Annandale | Archery | 72 | FY 2012 | 6 | 11 | 1 | 4 | 9 | 1 |
| Holmes Run Stream Valley | FCPA | Falls Church | Archery | 68 | FY 2018 | -- | 22 | 19 | 21 | 7 | 16 |
| Oak Marr Park | FCPA | Oakton | Archery | 58 | FY 2020 | -- | -- | -- | 3 | 5 | 5 |
| Sally Ormsby Park | FCPA | Annandale | Archery | 40 | FY 2012 | 2 | 2 | 0 | 1 | 1 | 0 |
| Tattersall Park | FCPA | Oakton | Archery | 35 | FY 2020 | -- | -- | -- | 4 | 2 | 0 |
| Waples Mill Meadow ¹ | FCPA | Oakton | Archery | 18 | FY 2015 | 4 | 3 | 1 | 7 | 2 | 5 |

¹Waples Mill Meadow – Following the county’s redistricting, this park is now a part Springfield District and will be removed from the Providence District’s deer management park list for future years starting in FY 2023.

No new park additions proposed for the Providence District in FY 2023. All proposed parks have already been included in the Deer Management Program in previous years.

| Springfield District | | | | | | | | | | | |
|---------------------------------------------------------------|----------------|-----------------|------------------|---------------------------------------|------------|---------------|---------------|----------------|---------------|---------------|---------------|
| FY 2023 Deer Management Program Proposed Park Sites | | | | | | | | | | | |
| Park Name | Property Owner | Location | Proposed Methods | Hunt Acreage | Year Added | Harvest FY 17 | Harvest FY 18 | Harvest FY 19 | Harvest FY 20 | Harvest FY 21 | Harvest FY 22 |
| PROPOSED ADDITIONAL ACREAGE Hemlock Overlook Regional Park | NOVA Parks | Clifton | Archery | 619 (includes new 227 acre parcel) | FY 2016 | 19 | 37 | 15 | 6 | 9 | 1 |
| Accotink Stream Valley Park | FCPA | Springfield | Archery | 405 | FY 2012 | 27 | 20 | 9 | 16 | 33 | 22 |
| Brimstone Park | FCPA | Fairfax Station | Archery | 5 | FY 2017 | 0 | 0 | 0 | 0 | 0 | 0 |
| Bull Run Marina | NOVA Parks | Clifton | Archery | 258 | FY 2014 | 21 | 27 | 12 | 11 | 6 | 4 |
| Bull Run Regional (South) | NOVA Parks | Clifton | Archery | 447 | FY 2017 | 31 | 18 | 20 | 10 | 7 | 8 |
| Burke Lake Park & Golf Course | FCPA | Springfield | Archery | 323 | FY 2012 | 15 | 10 | 8 | 7 | 13 | 4 |
| Burke Station Park | FCPA | Springfield | Archery | 15 | FY 2014 | 7 | 9 | 5 | 9 | 1 | 0 |
| Chapel Road Park | FCPA | Clifton | Sharpshooting | 25 | FY 2016 | 4 | 5 | 0 (archery) | 15 | 3 | 5 |
| Cherry Run Park | FCPA | Springfield | Archery | 4 | FY 2017 | 1 | 2 | 0 | 0 | 0 | 0 |
| Confederate Fortifications Historic Site | FCPA | Clifton | Archery | 150 | FY 2011 | 11 | 10 | 8 | 16 | 10 | 8 |
| Fountainhead Regional Park | NOVA Parks | Fairfax Station | Archery | 2075 | FY 2014 | 28 | 19 | 18 | 19 | 18 | 13 |
| Greentree Village Park | FCPA | Springfield | Archery | 19 | FY 2017 | 2 | 0 | 0 | 0 | 0 | 0 |
| Hunter Village Park ¹ | FCPA | Springfield | Archery | 20 | FY 2014 | 1 | 0 | 3 | 1 | 0 | 0 |
| Huntsman Lake | FCPA | Springfield | Archery | 26 | FY 2017 | 5 | 5 | 8 | 7 | 2 | 0 |
| Johnny Moore Stream Valley Park | FCPA | Clifton | Archery | 342 | FY 2012 | 30 | 36 | 33 | 27 | 9 | 8 |
| Lake Mercer Park | FCPA | Springfield | Archery | 195 | FY 2012 | 3 | 4 | 4 | 4 | 0 | 3 |
| Middle Run Stream Valley | FCPA | Springfield | Archery | 169 | FY 2017 | 10 | 4 | 5 | 1 | 1 | 4 |

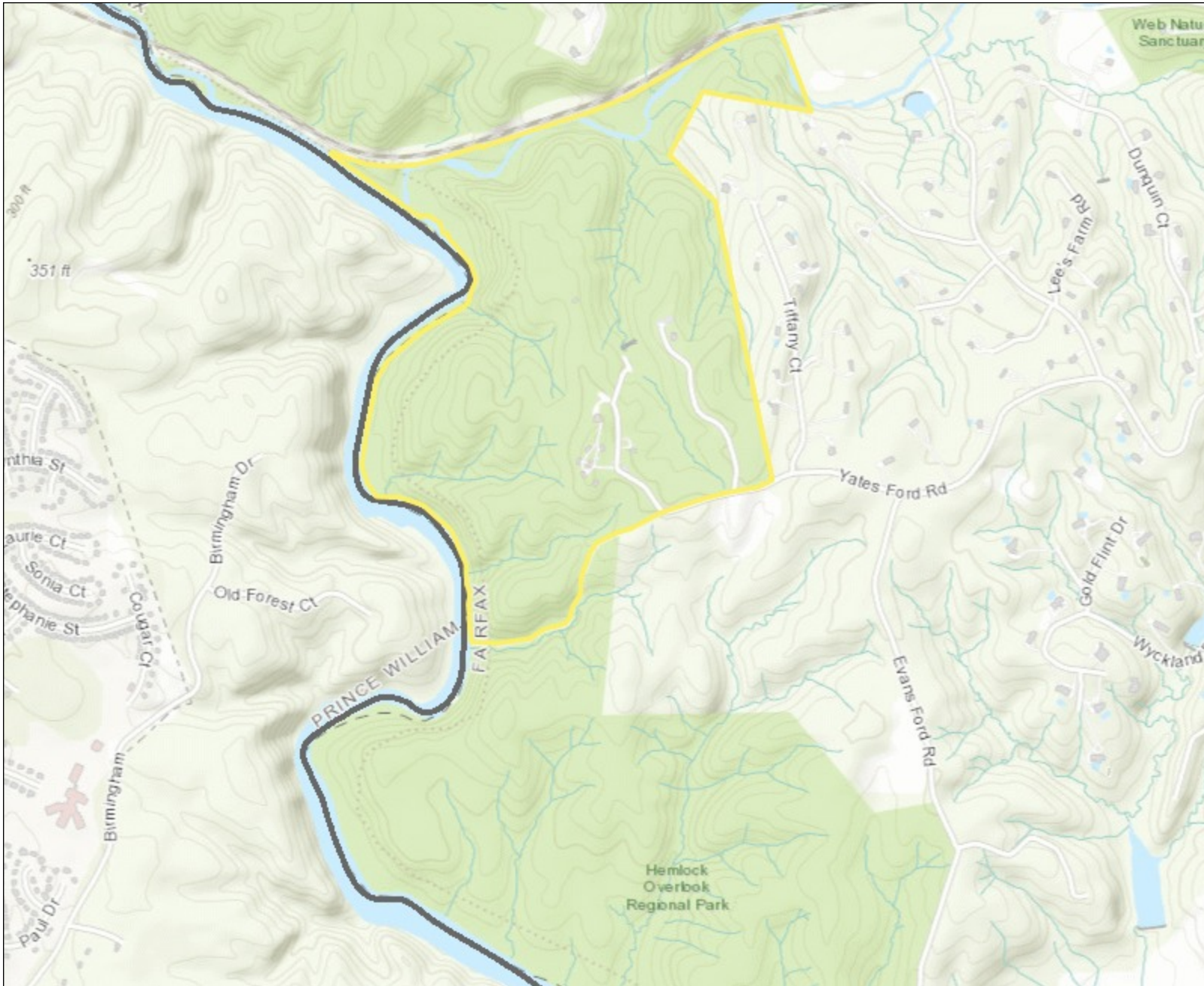
| Park Name | Property Owner | Location | Proposed Methods | Hunt Acreage | Year Added | Harvest FY 17 | Harvest FY 18 | Harvest FY 19 | Harvest FY 20 | Harvest FY 21 | Harvest FY 22 |
|---------------------------------|----------------|-----------------|------------------|--------------|------------|---------------|---------------|---------------|---------------|---------------|---------------|
| Patriot Park | FCPA | Fairfax Station | Archery | 122 | FY 2014 | 8 | 6 | 8 | 5 | 4 | 4 |
| Piney Branch Stream Valley | FCPA | Fairfax Station | Archery | 39 | FY 2018 | -- | 12 | 15 | 10 | 13 | 7 |
| Poburn Woods Park | FCPA | Springfield | Archery | 11 | FY 2017 | 0 | 0 | 1 | 2 | 1 | 3 |
| Pohick Stream Valley Park | FCPA | Springfield | Archery | 580 | FY 2012 | 24 | 34 | 20 | 22 | 12 | 16 |
| Popes Head Park | FCPA | Fairfax Station | Archery | 38 | FY 2014 | 6 | 13 | 3 | 5 | 9 | 7 |
| Rocky Run Stream Valley Park | FCPA | Chantilly | Archery | 111 | FY 2016 | 25 | 10 | 20 | 11 | 15 | 22 |
| Sandy Run Regional Park | NOVA Parks | Fairfax Station | Archery | 330 | FY 2014 | 10 | 8 | 14 | 15 | 12 | 9 |
| Sandy Run Stream Valley | FCPA | Fairfax Station | Archery | 39 | FY 2017 | 4 | 0 | 1 | 2 | 0 | 1 |
| Shannon Station Park | FCPA | Springfield | Archery | 13 | FY 2014 | 2 | 4 | 7 | 1 | 2 | 0 |
| South Run District Park | FCPA | Springfield | Archery | 115 | FY 2011 | 11 | 6 | 3 | 2 | 5 | 5 |
| South Run Stream Valley Park | FCPA | Springfield | Archery | 319 | FY 2011 | 9 | 10 | 3 | 6 | 3 | 1 |
| Waples Mill Meadow ² | FCPA | Oakton | Archery | 18 | FY 2015 | 4 | 3 | 1 | 7 | 2 | 5 |
| West Springfield Village Park | FCPA | Springfield | Archery | 10 | FY 2014 | 4 | 1 | 4 | 2 | 0 | 0 |
| Willow Pond | BOS | Chantilly | Archery | 11 | FY 2017 | 0 | 0 | 1 | 1 | 0 | 2 |

¹Hunter Village Park – Following the county’s redistricting, this park is now a part of the Lee District. It will not be included in the deer management park list for the Springfield District starting in FY 2023. It will be included in the park list of the Lee District for future years.

²Waples Mill Meadow – Following the county’s redistricting, this park is now a part Springfield District (was formerly within the Providence District). It will be included in the deer management park list for future years starting in FY 2023.



Hemlock Overlook Regional Park

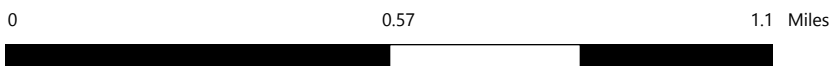


Legend

- Fairfax County Border

Notes:
 Proposed for FY23 Deer Management Program - Archery - Additional Acreage

Map produced: 5/4/2022




This map is intended for reference purposes only. Fairfax County does not provide any guarantee of the accuracy or completeness regarding the map information.

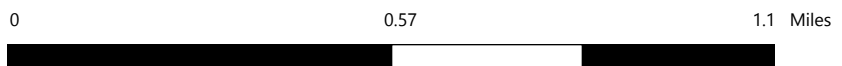


Hemlock Overlook Regional Park



Legend

-  Fairfax County Border



This map is intended for reference purposes only. Fairfax County does not provide any guarantee of the accuracy or completeness regarding the map information.

Notes:
Proposed for FY23 Deer Management Program - Archery - Additional Acreage

Map produced: 5/4/2022

Sully District

FY 2023 Deer Management Program Proposed Park Sites

| Park Name | Property Owner | Location | Proposed Methods | Hunt Acreage | Year Added | Harvest FY 17 | Harvest FY 18 | Harvest FY 19 | Harvest FY 20 | Harvest FY 21 | Harvest FY 22 |
|------------------------------------------|----------------|-------------|------------------|--------------|----------------------------------------------|-------------------|-------------------|-------------------------------|-------------------------------|-------------------|-------------------|
| Bull Run Regional Park | NOVA Parks | Centreville | Archery | 839 | FY 2014 | 30 | 26 | 50 | 56 | 44 | 16 |
| Bull Run Regional (South) | NOVA Parks | Centreville | Archery | 447 | FY 2017 | 31 | 18 | 20 | 10 | 7 | 8 |
| Cub Run Stream Valley | FCPA | Chantilly | Archery | 626 | FY 2011 | 19 | 27 | 19 | 24 | 21 | 15 |
| Cub Run Stream Valley (North) | FCPA | Chantilly | Archery | 138 | FY 2022 | -- | -- | -- | -- | -- | 15 |
| Difficult Run Stream Valley (Reston) | FCPA | Herndon | Archery | 258 | FY 2011 | 15 | 3 | 12 | 9 | 14 | 11 |
| Elklick Preserve ¹ | FCPA | Centreville | Archery | 1388 | FY 2006 (managed hunt); FY 2011 (archery) | 39 (archery only) | 35 (archery only) | 44 (archery and managed hunt) | 28 (archery and managed hunt) | 21 (archery only) | 14 (archery only) |
| Ellanor C Lawrence Park | FCPA | Chantilly | Archery | 459 | FY 2011 | 26 | 36 | 39 | 27 | 40 | 40 |
| Foxvale Park | FCPA | Oakton | Archery | 25 | FY 2016 | 5 | 2 | 3 | 5 | 1 | 1 |
| Flatlick Stream Valley | FCPA | Centreville | Archery | 60 | FY 2016 | 7 | 8 | 3 | 8 | 12 | 13 |
| Fred Crabtree Park | FCPA | Herndon | Archery | 208 | FY 2014 | 18 | 10 | 4 | 11 | 21 | 13 |
| Halifax Point District Park ² | FCPA | Centreville | Archery | 271 | FY 2011 | -- | -- | -- | -- | 6 | 3 |
| Hickory Forest Park | FCPA | Centreville | Archery | 95 | FY 2013 | 2 | 1 | 1 | 1 | 7 | 4 |
| Horsepen Run Stream Valley Park | FCPA | Vienna | Archery | 64 | FY 2017 | 2 | 13 | 8 | 9 | 5 | 1 |
| Little Difficult Run Stream Valley Park | FCPA | Herndon | Archery | 72 | FY 2014 | 10 | 15 | 12 | 2 | 10 | 4 |

| Park Name | Property Owner | Location | Proposed Methods | Hunt Acreage | Year Added | Harvest FY 17 | Harvest FY 18 | Harvest FY 19 | Harvest FY 20 | Harvest FY 21 | Harvest FY 22 |
|------------------------------------------|----------------|-------------|------------------|--------------|------------|------------------|------------------|---------------------------------|--------------------------------|------------------|------------------|
| Mountain Road District Park ¹ | FCPA | Centreville | Archery | 201 | FY 2011 | 7 (archery only) | 7 (archery only) | 11 (archery) plus *managed hunt | 5 (archery) plus *managed hunt | 7 (archery only) | 7 (archery only) |
| Poplar Ford Park | FCPA | Centreville | Archery | 372 | FY 2011 | 12 | 8 | 13 | 9 | 4 | 9 |
| Rock Hill District Park ¹ | FCPA | Chantilly | Archery | 169 | FY 2006 | 8 (archery only) | 5 (archery only) | 3 (archery) plus *managed hunt | 2 (archery) plus *managed hunt | 3 (archery only) | 2 (archery only) |
| Rocky Run Stream Valley Park | FCPA | Chantilly | Archery | 79 | FY 2016 | 18 | 10 | 19 | 10 | 15 | 22 |
| Sully Historic Site | FCPA | Chantilly | Archery | 84 | FY 2011 | 9 | 9 | 12 | 6 | 2 | 6 |
| Waples Mill Meadow ³ | FCPA | Oakton | Archery | 18 | FY 2015 | 4 | 3 | 1 | 7 | 2 | 5 |
| Willow Pond Park | FCPA | Chantilly | Archery | 55 | FY 2017 | 0 | 0 | 1 | 1 | 0 | 2 |

¹Elklick, Rock Hill District Park, Mountain Road District Park – Managed hunts were conducted in FY 2019 and FY 2020 and yielded 16 deer harvests and 13 deer harvests respectively, in addition to the archery program harvests.

²Halifax Point District Park was formerly a part of Elklick Preserve. Harvests for FY17-FY20 are included in the Elklick totals.

³Waples Mill Meadow – Following the county’s redistricting, this park is now a part Springfield District. It will be included in the deer management park list for the Springfield District in future years starting in FY 2023.

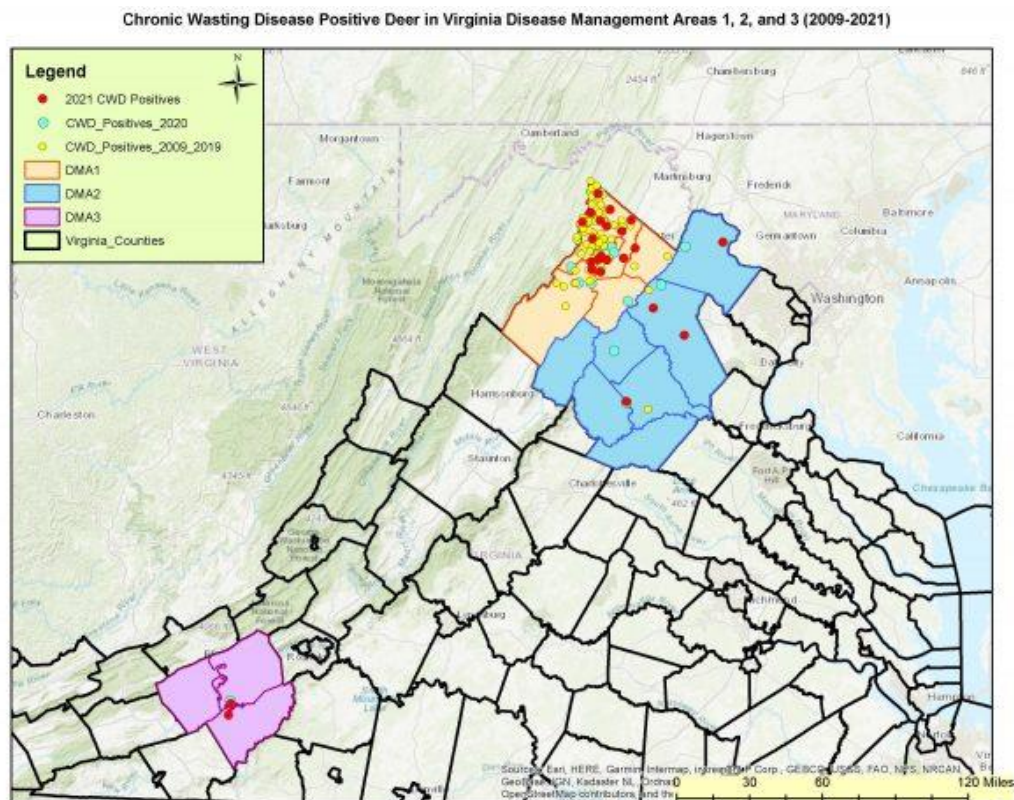
No new park additions proposed for the Sully District in FY 2023. All proposed parks have already been included in the Deer Management Program in previous years.

Fairfax County Deer Management Program

2021-2022 Chronic Wasting Disease Sampling Effort in Fairfax County, VA

Chronic Wasting Disease (CWD) is an incurable disease, found in deer, elk, and moose in North America. It is a slow-acting and progressive neurologic disease that ultimately results in death of the animal. The disease-causing agent is spread through the urine, feces, and saliva of infected animals and through water or soil contaminated with prions. Clinical signs of CWD, which typically do not develop for several months to over a year after exposure, include staggering, abnormal posture, lowered head, drooling, confusion, and marked weight loss.

CWD was first diagnosed in Virginia in 2009 and has been subsequently detected in 11 counties: Frederick, Shenandoah, Clarke, Culpeper, Fauquier, Madison, Loudoun, Rappahannock, Warren, Montgomery, and Floyd counties. As of March 2022, 134 white-tailed deer have tested positive for CWD in Virginia. The Virginia Department of Wildlife Resources (DWR) is responsible for CWD surveillance and management and has established three DWR Disease Management Areas (DMA), which encompass 15 counties in Virginia. DMA1 includes the counties of Clarke, Frederick, Shenandoah, and Warren. DMA2 includes the counties of Culpeper, Fauquier, Loudoun, Madison, Page, Orange, and Rappahannock and DMA3 encompasses Floyd, Montgomery, Pulaski, and Carroll counties.



Fairfax County is not currently included within a DMA but is taking a proactive approach to conduct voluntary surveillance due to the potential impacts of this emerging disease on deer populations in the Commonwealth and its proximity in nearby counties, including Loudoun, Fauquier, and Culpeper Counties. Staff were trained by DWR personnel and follow agency guidelines for the sampling of deer and testing for CWD, which includes the removal of medial retropharyngeal lymph node samples from harvested deer.

Samples from harvested deer were collected through police sharpshooting efforts and the use of “CWD Surveillance Drop Sites” for the archery program. These methods have been used for the past two years. Drop sites consisted of small freezer stations that were temporarily established, with property owner permission, on county parkland and hunt club property, where hunters could drop off samples from deer harvested in the Fairfax County Deer Management Program for CWD testing. Freezer stations were located at Burke Lake, Lake Accotink, Lake Fairfax, Grist Mill Park, the Flatlick Maintenance Shop (Area 5 Shop), Bull Run Regional Park, and the Izaak Walton League. Sites were secured from public access and operated from October – December. FCPD Wildlife staff monitored these locations during the program season and processed the samples for lab submission.

The Fairfax County Deer Management Program conducted voluntary sampling of white-tailed deer for CWD between October 1, 2021, and March 10, 2022. Lymph node samples were collected from 225 deer harvested in 72 parks in Fairfax County, VA (Table 1). Of the deer tested, 191 samples were taken from archery harvested deer and 34 samples were taken from county sharpshooting efforts. Only yearling and adult deer were tested; no fawns were submitted for testing per DWR guidelines. Overall, 111 does and 114 bucks were sampled. The mean age of sampled does was 2.38 years (range = 1.5 to 5.5 years), and the mean age of sampled bucks was 2.10 years (range = 1.5 to 5.5 years). Mean sample age overall was 2.24 years.

Samples were submitted for analysis to the Wisconsin Veterinary Diagnostics Laboratory in Madison, WI. All results came back as CWD “Not Detected.” This result is based on current transmissible spongiform encephalopathy (TSE) research, noting the possibility of protease resistant prion protein (PRP-RES) present at levels below detection sensitivity of the test. PRP-RES may also be present in other tissues not submitted for testing. All test results were reported to the State Wildlife Veterinarian and Wildlife Disease Biologist with the DWR.

Table 1. Number and sex of harvested deer tested for Chronic Wasting Disease in the Fairfax County Deer Management Program by park location during the 2021-2022 deer season.

| Archery Park/Location | Property Owner ¹ | Number of Samples | | |
|----------------------------------------------|-----------------------------|-------------------|-----|-------|
| | | Buck | Doe | Total |
| Accotink Stream Valley Park | FCPA | 3 | 5 | 8 |
| BOS Mount Vernon | BOS | 2 | 0 | 2 |
| Bull Run Marina | NOVA Parks | 0 | 1 | 1 |
| Bull Run Regional Park | NOVA Parks | 1 | 1 | 2 |
| Bull Run Regional Park South | NOVA Parks | 1 | 1 | 2 |
| Burke Lake | FCPA | 0 | 2 | 2 |
| Clarks Crossing | FCPA | 2 | 1 | 3 |
| Colvin Run SV | FCPA | 2 | 1 | 3 |
| Confederate Fortifications | FCPA | 1 | 2 | 3 |
| Cub Run SV North | FCPA | 1 | 7 | 8 |
| Cub Run SV | FCPA | 1 | 2 | 3 |
| Deerlick Park | FCPA | 1 | 0 | 1 |
| Difficult Run SV – Colvin | FCPA | 0 | 1 | 1 |
| Difficult Run SV- Reston | FCPA | 1 | 0 | 1 |
| Difficult Run SV- Vienna | FCPA | 2 | 5 | 7 |
| Eakin Community Park | FCPA | 0 | 2 | 2 |
| Elklick Preserve | FCPA | 0 | 3 | 3 |
| Ellanor C Lawrence Park | FCPA | 4 | 1 | 5 |
| Flatlick SV | FCPA | 2 | 1 | 3 |
| Folly Lick SV | FCPA | 1 | 0 | 1 |
| Fountainhead Regional Park | NOVA Parks | 3 | 4 | 7 |
| Fred Crabtree | FCPA | 0 | 4 | 4 |
| Hickory Forest Park | FCPA | 1 | 0 | 1 |
| Holmes Run SV | FCPA | 2 | 3 | 5 |
| Huntley Meadows | FCPA | 2 | 2 | 4 |
| John Byers Park | FCPA | 0 | 1 | 1 |
| Johnny Moore SV | FCPA | 4 | 1 | 5 |
| Kings Park West | FCPA | 0 | 1 | 1 |
| Lahey Lost Valley | FCPA | 0 | 1 | 1 |
| Lake Accotink | FCPA | 2 | 2 | 4 |
| Lake Fairfax | FCPA | 4 | 4 | 8 |
| Langley Oaks | FCPA | 5 | 2 | 7 |
| Laurel Hill Park & Golf Course | FCPA | 1 | 1 | 2 |
| Lee District Park | FCPA | 1 | 0 | 1 |
| Lillian Carey | FCPA | 1 | 1 | 2 |
| Little Difficult Run SV | FCPA | 1 | 2 | 3 |
| Long Branch SV | FCPA | 0 | 1 | 1 |
| Meadowood Special Recreation Management Area | BLM | 2 | 2 | 4 |
| Middle Run SV | FCPA | 1 | 1 | 2 |
| Mountain Road Park | FCPA | 0 | 1 | 1 |
| Oak Marr | FCPA | 3 | 0 | 3 |
| Occoquan Regional Park | NOVA Parks | 1 | 1 | 2 |
| Patriot Park | FCPA | 0 | 1 | 1 |
| Pimmit Run SV | FCPA | 2 | 0 | 2 |
| Piney Branch SV | FCPA | 2 | 0 | 2 |

| Archery Park/Location | Property Owner ¹ | Number of Samples | | |
|---------------------------------------|-----------------------------|-------------------|-----------|------------|
| | | Buck | Doe | Total |
| Poburn Woods | FCPA | 2 | 0 | 2 |
| Pohick Bay Regional Park | NOVA Parks | 0 | 1 | 1 |
| Pohick SV | FCPA | 5 | 3 | 8 |
| Popes Head Park | FCPA | 1 | 2 | 3 |
| Poplar Ford Park | FCPA | 1 | 2 | 3 |
| Riverbend Park | FCPA | 4 | 1 | 5 |
| Rock Hill District Park | FCPA | 0 | 1 | 1 |
| Rocky Run SV | FCPA | 0 | 2 | 2 |
| Roundtree Park | FCPA | 0 | 1 | 1 |
| Sandy Run Regional Park | NOVA Parks | 1 | 2 | 3 |
| Scotts Run Nature Preserve | FCPA | 1 | 2 | 3 |
| South Run District Park | FCPA | 1 | 0 | 1 |
| South Run SV | FCPA | 1 | 0 | 1 |
| Sugarland Run SV | FCPA | 2 | 3 | 5 |
| Tamarack Park | FCPA | 1 | 0 | 1 |
| TNC Fraser Preserve | TNC | 2 | 1 | 3 |
| Upper Potomac | NOVA Parks | 1 | 2 | 3 |
| Wakefield Park | FCPA | 2 | 2 | 4 |
| Waples Mill Meadow | FCPA | 2 | 2 | 4 |
| Willow Pond Park | FCPA | 2 | 0 | 2 |
| Archery Total | | 92 | 99 | 191 |
| Sharpshooting Park/Location | Property Owner ¹ | Number of Samples | | |
| | | Buck | Doe | Total |
| Annandale Community Park | FCPA | 4 | 0 | 4 |
| Bren Mar/Turkeycock Run Stream Valley | FCPA | 0 | 1 | 1 |
| Chapel Road Park | FCPA | 0 | 3 | 3 |
| Dranesville Tavern | FCPA | 0 | 2 | 2 |
| Franconia Park | FCPA | 0 | 1 | 1 |
| Frying Pan Farm Park | FCPA | 7 | 1 | 8 |
| Green Spring Gardens | FCPA | 1 | 0 | 1 |
| Huntley Meadows Park | FCPA | 10 | 4 | 14 |
| Sharpshooting Total | | 22 | 12 | 34 |

¹ Fairfax County Park Authority (FCPA), Northern Virginia Regional Park Authority (NOVA Parks), Board of Supervisors (BOS), The Nature Conservancy (TNC), Bureau of Land Management (BLM)

| | | | |
|----------------------------------------------|----------------------|--------------------|----------------------|
| FY 2022 Deer Management Program Total | 114 Bucks | 111 Doe | 225 Total |
|----------------------------------------------|----------------------|--------------------|----------------------|

FAIRFAX COUNTY DEER MANAGEMENT PROGRAM



Park Authority Board Meeting

May 25, 2022

Katherine Edwards, Ph.D., Certified Wildlife Biologist®
Wildlife Management Specialist
Fairfax County Police Department

David M. Lawlor, Ecologist III
Inventory and Planning Program Manager
Fairfax County Park Authority



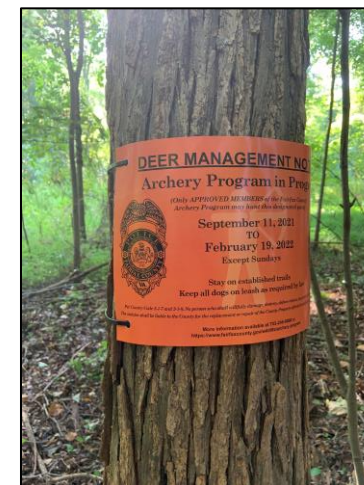
Fairfax County Deer Management Program

- Approved by the Fairfax County Board of Supervisors in 1998
- Implemented by the Fairfax County Police Department in collaboration with the Fairfax County Park Authority, NOVA Parks, and other stakeholders
- Safety Concerns
- Health Concerns (public health and herd health)
- Ecological Damage

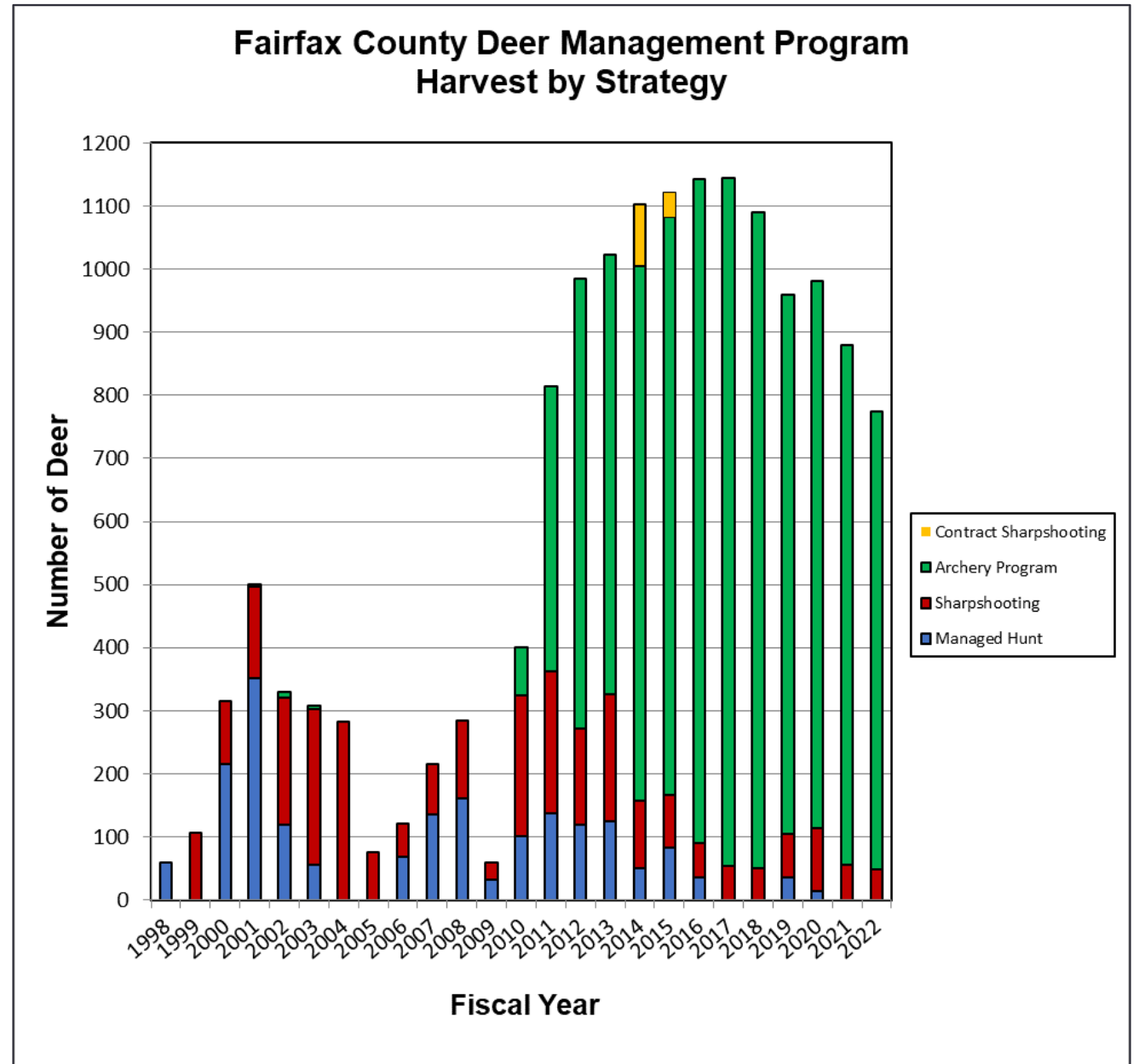
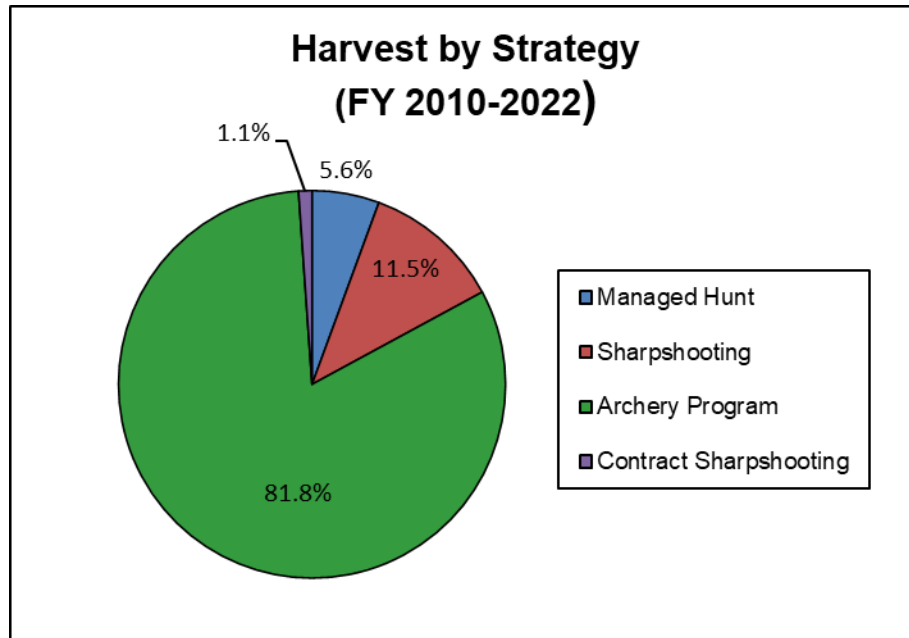


Fairfax County Deer Management Program FY 2022 Summary Statistics

- Deer herd reduction activities took place at 99 FCPA parks
- 636 deer harvested from FCPA parks
 - 587 deer harvested by archery
 - 49 deer harvested by sharpshooting
- 545 volunteer archers donating 37,778 hours of hunting and scouting hours
- 775 deer harvested in total including non-FCPA properties
- Archery continues to be the most cost-effective and successful method of herd management, representing 94% of the total program harvest last season.



Fairfax County Deer Management Program Harvest Totals



Fairfax County Deer Management Program Monitoring

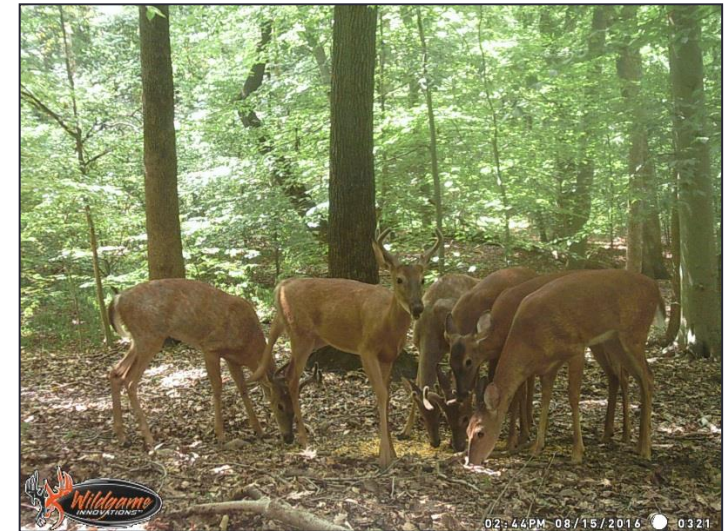
Browse Impact Surveys

- Measure deer browse impacts to native woody vegetation
- 542 permanent vegetation plots in 61 parks
- In FY 2022, 208 browse plots were surveyed by park ecologists.
- Plots will be resampled at 4-year intervals.



Deer Density Camera Surveys

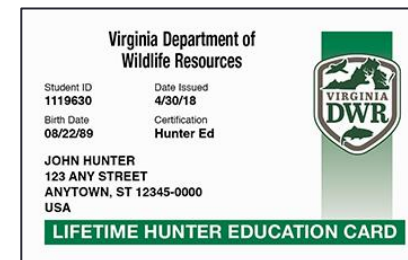
- In August 2021, camera surveys were conducted in 25 parks (36 camera stations).
- Camera surveys are tentatively planned for 15-20 parks (35-45 camera stations) in August 2022.



Fairfax County Deer Management Program FY 2023 Program Changes

Archery: September 10, 2022 – February 18, 2023

New proposed additions for archery:



- Braddock District: Country Club View Park and Fairfax Villa Park
- Hunter Mill District: Old Courthouse Spring Branch Stream Valley and Raglan Road Park
- Lee District: Groveton Heights Park, Loisdale Park, and Ridgeview Park
- Mount Vernon District: Grist Mill Park, Paul Springs Stream Valley (portion), Kirk Park (portion), and Pole Road Park

Managed Hunts: Managed shotgun hunts will not be conducted during FY 2023.

Fairfax County Deer Management Program FY 2023 Program Changes

Sharpshooting: Various nights (TBD) between November 2022 – March 2023

No new FCPA parks added to the sharpshooting program.

All parks have been included for sharpshooting in prior years.

Planned sharpshooting operations at FCPA parks:

- Bren Mar Park and Turkeycock Run Stream Valley
- Franconia Park and Monticello Woods Park
- Frying Pan Farm Park
- Green Spring Gardens
- Huntley Meadows Park/Dogue Creek Stream Valley (late season following archery)



Fairfax County Deer Management Program Public Notification

- Notification letters will be mailed to property owners adjacent to approved parks (>23,000 letters mailed in FY 2022)
- Deer management narrated webinar will be posted on website in August
- HOA, Community, and Civic Association Meetings
- Press releases, county blogs (FCPD and OPA) and videos (Channel 16, Fairfax County YouTube)
- Fairfax County Deer Management website
- Deer Management Program signs

<https://www.fairfaxcounty.gov/wildlife/deer-management-program>



CWD Surveillance and Herd Health

- Fairfax County is not included in a CWD Disease Management Area yet but there are confirmed positive deer in Loudoun and Fauquier Counties.
- CWD Surveillance Freezer Stations: Burke Lake, Lake Accotink, Lake Fairfax, Grist Mill Park, and the Flatlick Maintenance Shop (Area 5 Shop)
- In FY 2022, 195 deer (100 bucks, 95 does) were sampled from 54 FCPA parks (225 deer in total including non-FCPA properties)
- From FY 2020-2022, 458 deer (225 bucks, 233 does) have been sampled through the Fairfax County Deer Management Program
- Samples tested by the Wisconsin Veterinary Diagnostics Laboratory
- All results to date have been “CWD Not Detected.”

