

Noise Contours North of Route 50

60 -65 DNL



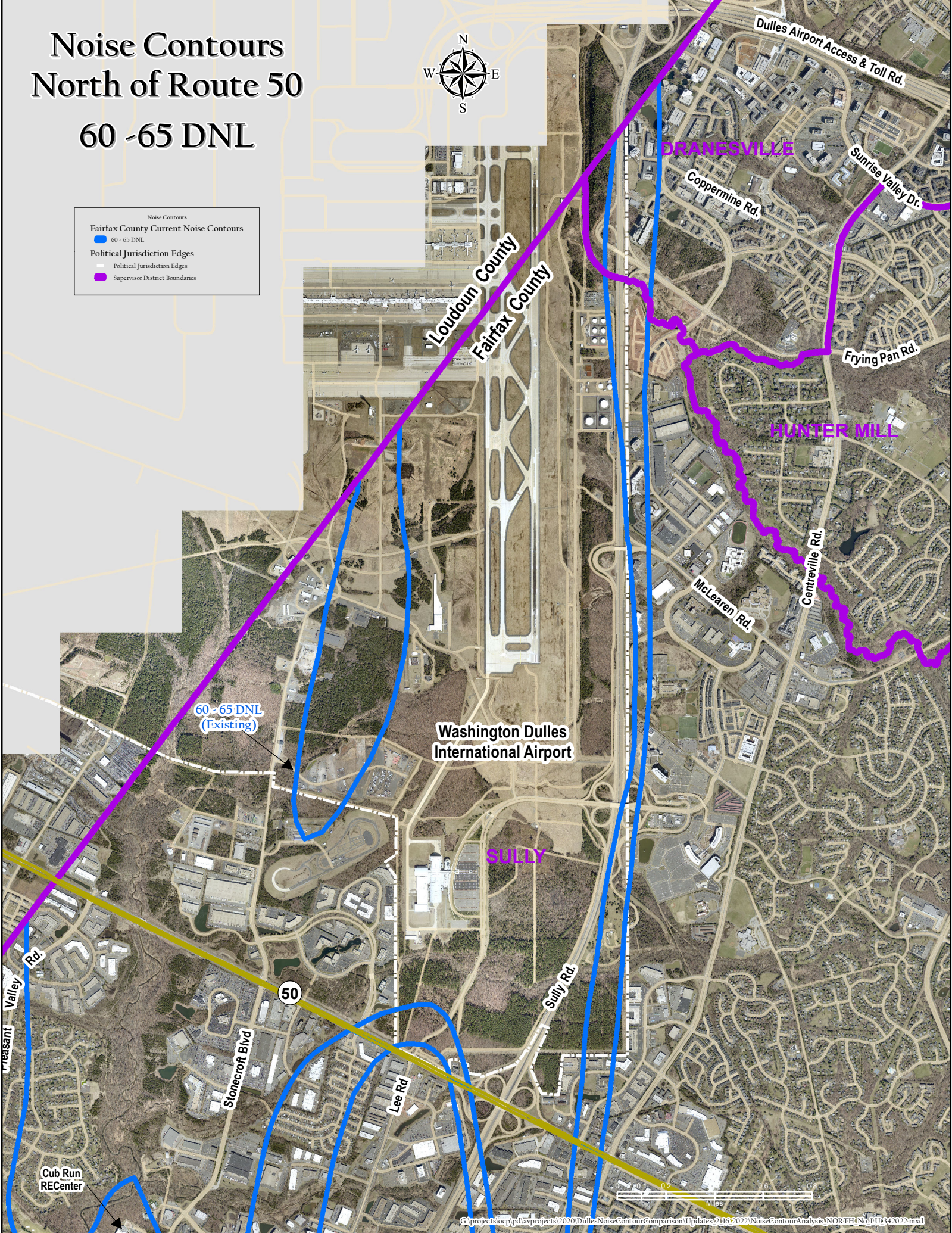
Noise Contours

Fairfax County Current Noise Contours

- 60 - 65 DNL

Political Jurisdiction Edges

- Political Jurisdiction Edges
- Supervisor District Boundaries



Existing Land Use North of Route 50

60 -65 DNL



Noise Contours

Fairfax County Current Noise Contours

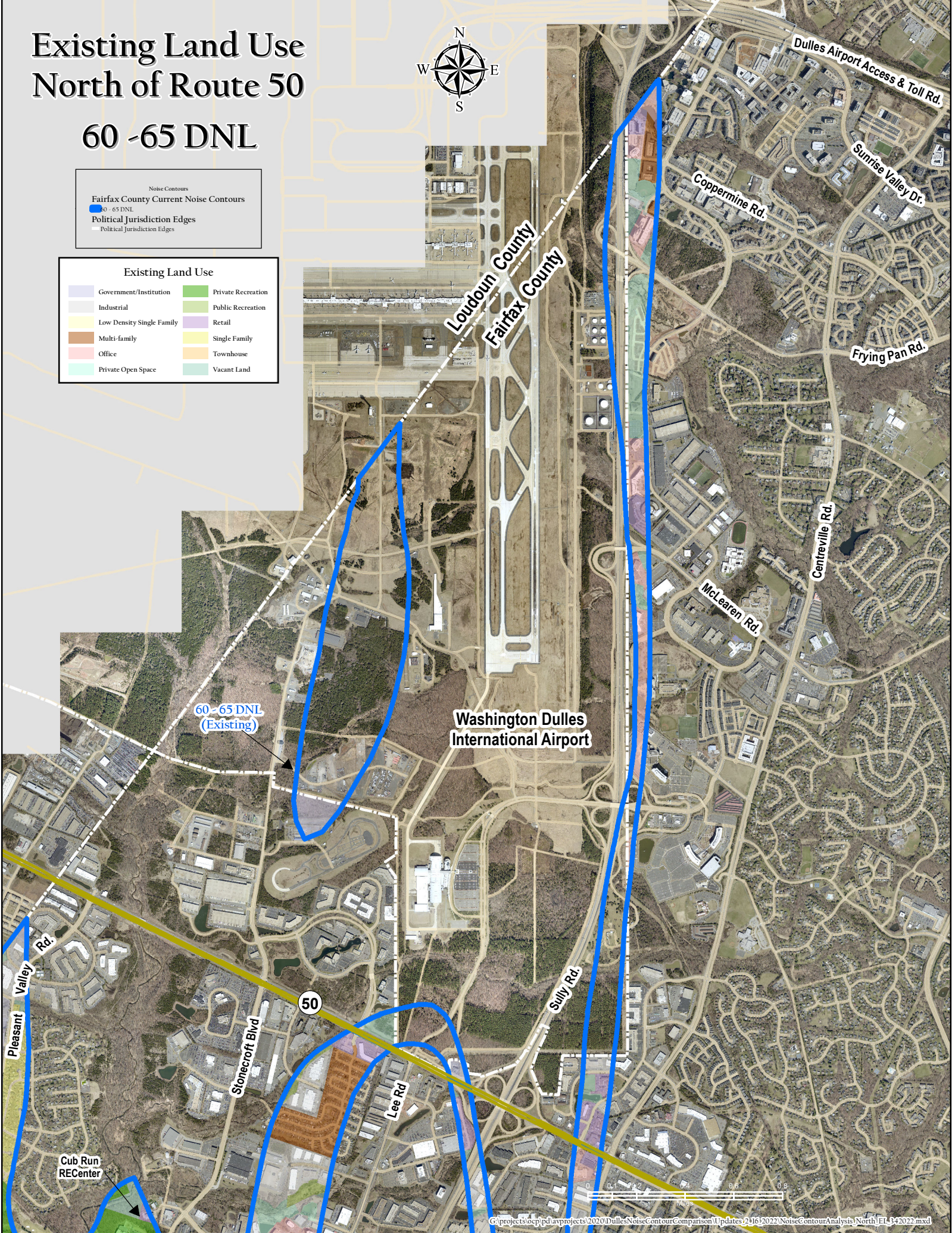
- 60 - 65 DNL

Political Jurisdiction Edges

- Political Jurisdiction Edges

Existing Land Use

Government/Institution	Private Recreation
Industrial	Public Recreation
Low Density Single Family	Retail
Multi-family	Single Family
Office	Townhouse
Private Open Space	Vacant Land



60 -65 DNL
(Existing)

Washington Dulles
International Airport

50

Cub Run
RECenter

Planned Land Use North of Route 50

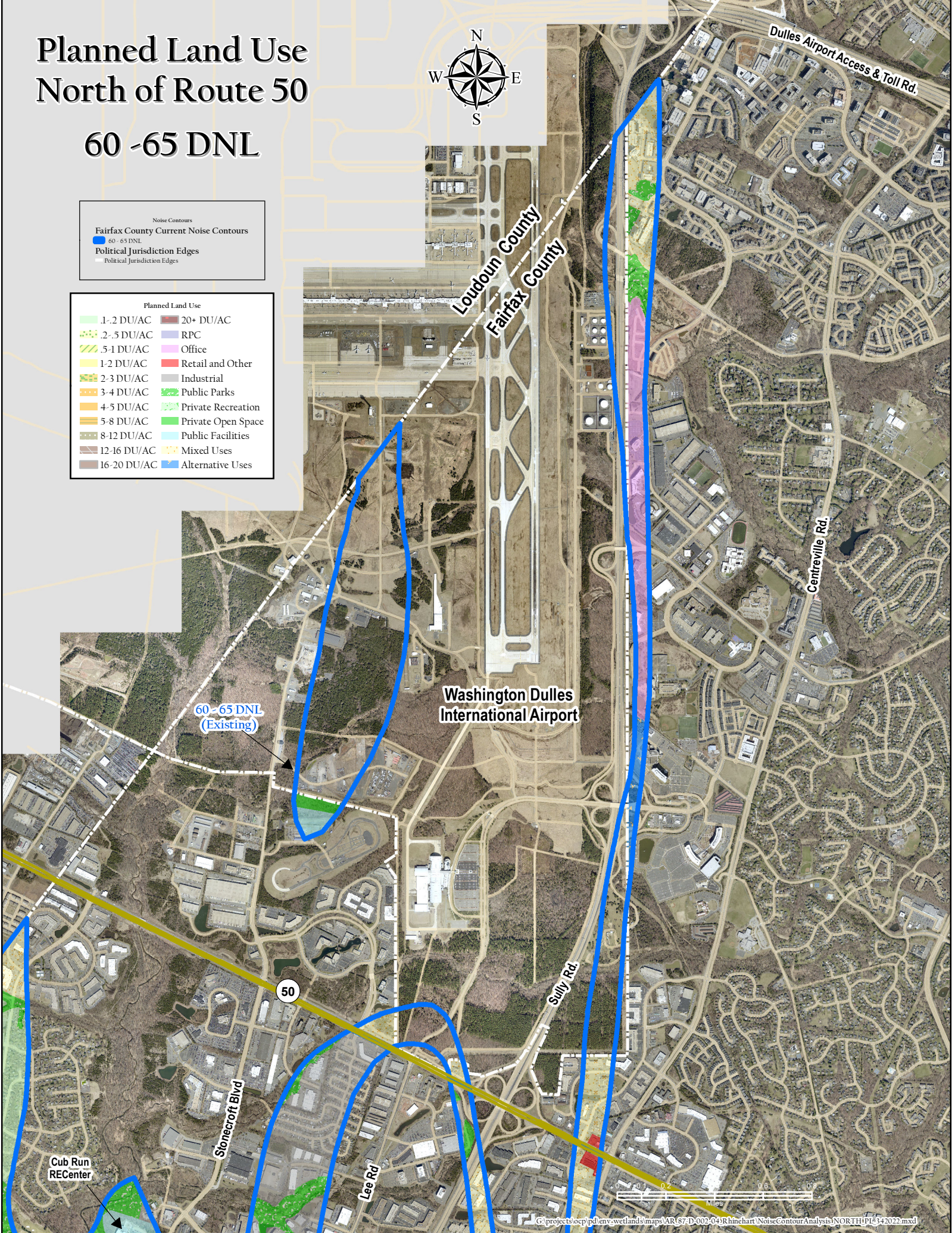
60 -65 DNL



Noise Contours
Fairfax County Current Noise Contours
 60 - 65 DNL
Political Jurisdiction Edges
 Political Jurisdiction Edges

Planned Land Use

1-2 DU/AC	20+ DU/AC
2-5 DU/AC	RPC
5-1 DU/AC	Office
1-2 DU/AC	Retail and Other
2-3 DU/AC	Industrial
3-4 DU/AC	Public Parks
4-5 DU/AC	Private Recreation
5-8 DU/AC	Private Open Space
8-12 DU/AC	Public Facilities
12-16 DU/AC	Mixed Uses
16-20 DU/AC	Alternative Uses



60 - 65 DNL
(Existing)

Washington Dulles
International Airport

Stonecroft Blvd

Lee Rd

Sully Rd

Centreville Rd

Dulles Airport Access & Toll Rd

Loudoun County
Fairfax County

Cub Run
RECenter





Washington Dulles International Airport

50

Loudoun County
Fairfax County

Cub Run RECenter

Stonecroft Blvd

Lee Rd

60-65 DNL (Existing)

Pleasant Valley Golf Course

Willard Rd

28

Braddock Rd

Pleasant Valley Rd

Flatlick Run Stream Valley

Poplar Tree Rd

Chantilly National Golf Course

Elanor C. Lawrence Park

Noise Contours South of Route 50 60-65 DNL

Westfields Blvd

Stone Rd

66

Cub Run Stream Valley

29

Noise Contours

- Fairfax County Current Noise Contours
- 60-65 DNL
- Political Jurisdiction Edges
- Political Jurisdiction Edges





Washington Dulles International Airport

Loudoun County
Fairfax County

50

Cub Run RECenter

60-65 DNL
(Existing)

Pleasant Valley Golf Course

Braddock Rd

Pleasant Valley Rd

Willard Rd

28

Flatlick Run Stream Valley

Chantilly National Golf Course

Elanor C. Lawrence Park

Poplar Tree Rd

Existing Land Use South of Route 50

60 -65 DNL

Existing Land Use	
Government/Institution	Private Recreation
Industrial	Public Recreation
Low Density Single Family	Retail
Multi-family	Single Family
Office	Townhouse
Private Open Space	Vacant Land

Noise Contours	
Fairfax County Current Noise Contours	
60 - 65 DNL	
Political Jurisdiction Edges	
Political Jurisdiction Edges	

Cub Run Stream Valley

Westfields Blvd

Stone Rd

66

29





Washington Dulles International Airport

Loudoun County
Fairfax County

60-65 DNL (Existing)

Cub Run RECenter

Pleasant Valley Golf Course

Braddock Rd

Pleasant Valley Rd

Stonecroft Blvd

Lee Rd

Willard Rd

28

Poplar Tree Rd

Flatlick Run Stream Valley

Chantilly National Golf Course

Elanor C. Lawrence Park

Planned Land Use South of Route 50

60-65 DNL

Planned Land Use	
1-2 DU/AC	20+ DU/AC
2-5 DU/AC	RPC
5-1 DU/AC	Office
1-2 DU/AC	Retail and Other
2-3 DU/AC	Industrial
3-4 DU/AC	Public Parks
4-5 DU/AC	Private Recreation
5-8 DU/AC	Private Open Space
8-12 DU/AC	Public Facilities
12-16 DU/AC	Mixed Uses
16-20 DU/AC	Alternative Uses

Noise Contours	
Fairfax County Current Noise Contours	
60-65 DNL	
Political Jurisdiction Edges	
Political Jurisdiction Edges	

Cub Run Stream Valley

Stone Rd

Westfields Blvd

66

29

