

# **Penn Daw Fire Station, Emergency Shelter & Supportive Housing and Affordable Housing**

Advisory Committee Meeting  
July 13, 2023

Building Design and Construction Division



## Community Comments/Considerations

### ➤ **Outdoor Spaces**

- ✓ Separate outdoor spaces- each co-located use
- ✓ Design the outdoor space to discourage loitering
- ✓ Maximize outdoor and pervious spaces, especially towards the back of the building
- ✓ Eliminate community outdoor space - may not be used often and may encourage loitering
- ✓ Utilize green roof spaces for the shelter clients
- ✓ Utilize the existing tree buffer on the rear for the new development
- ✓ Maximize the set back and buffers
- ✓ Mitigate noise impact from the emergency generator on surrounding properties

### ➤ **Parking and Traffic**

- ✓ Parking reduction - minimize the impervious areas by locating parking under the building
- ✓ Traffic management to reduce impact on Beacon Hill Road
- ✓ Include Speed bumps, bike lanes and safe sidewalks

### ➤ **Building Design**

- ✓ Distinguish between different uses by using different exterior finishes
- ✓ Building height and number of stories

### ➤ **Sustainability**

- ✓ Incorporate Green roofs, solar panels and rain gardens into the design

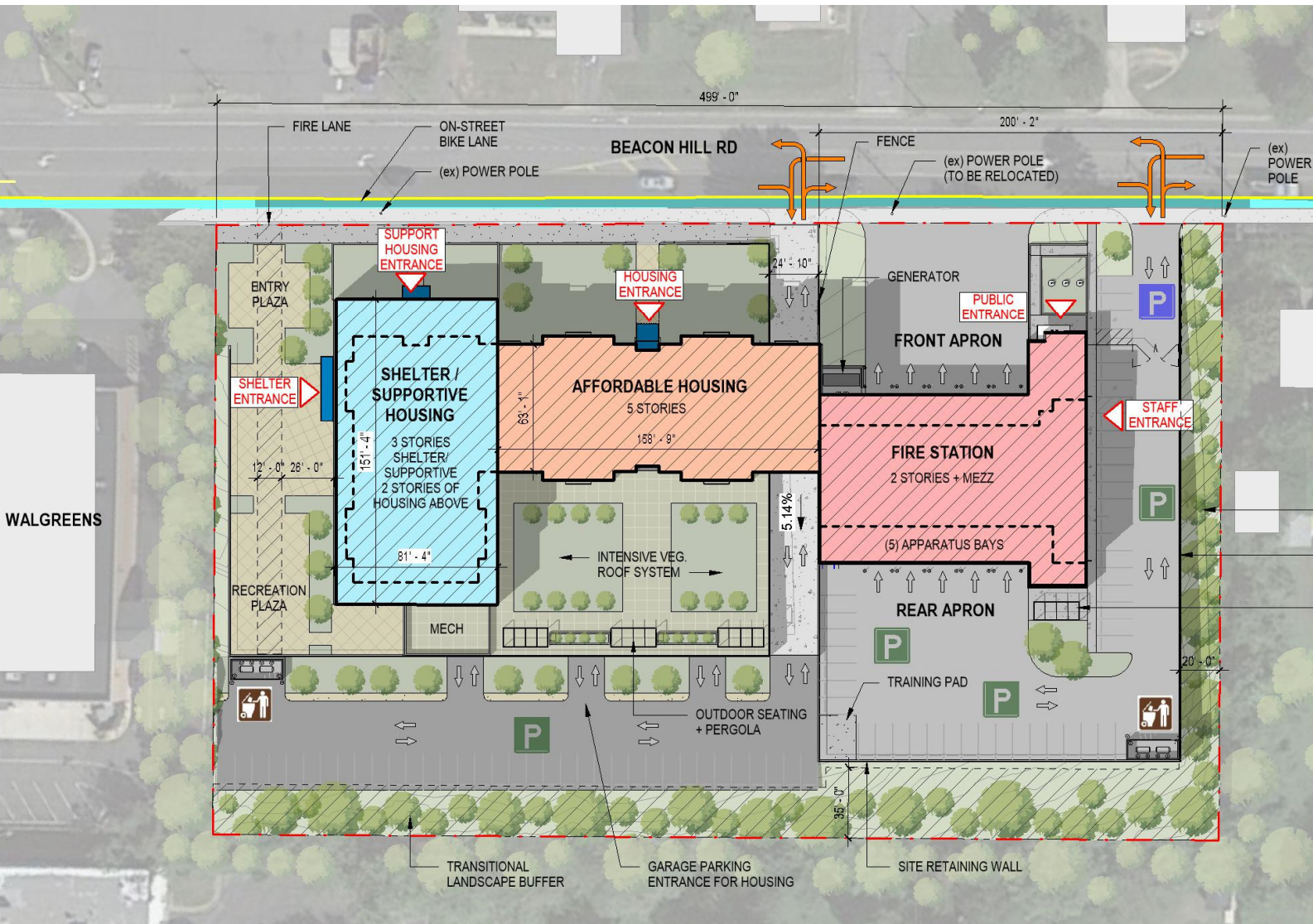
### ➤ **Site Design**

- ✓ Incorporate stormwater management minimize impact on surrounding properties
- ✓ Underground utilities



# Penn Daw Fire Station, Emergency Shelter & Supportive Housing and Affordable Housing

## Consolidated Concept - Site



**PARKING COUNT 161**

**FIRE STATION**

40 STANDARD STALLS  
4 PUBLIC & ADA STALLS

**SHELTER/SUPPORTIVE HOUSING**

40 STANDARD STALLS  
2 ADA STALLS

**AFFORDABLE HOUSING**

73 STANDARD STALLS  
2 ADA STALLS

LANDSCAPE BUFFER

PERIMETER FENCE

FIRE STATION PATIO + PERGOLA

**GROSS SQUARE FOOTAGE**

FIRE STATION: **23,701 GSF**

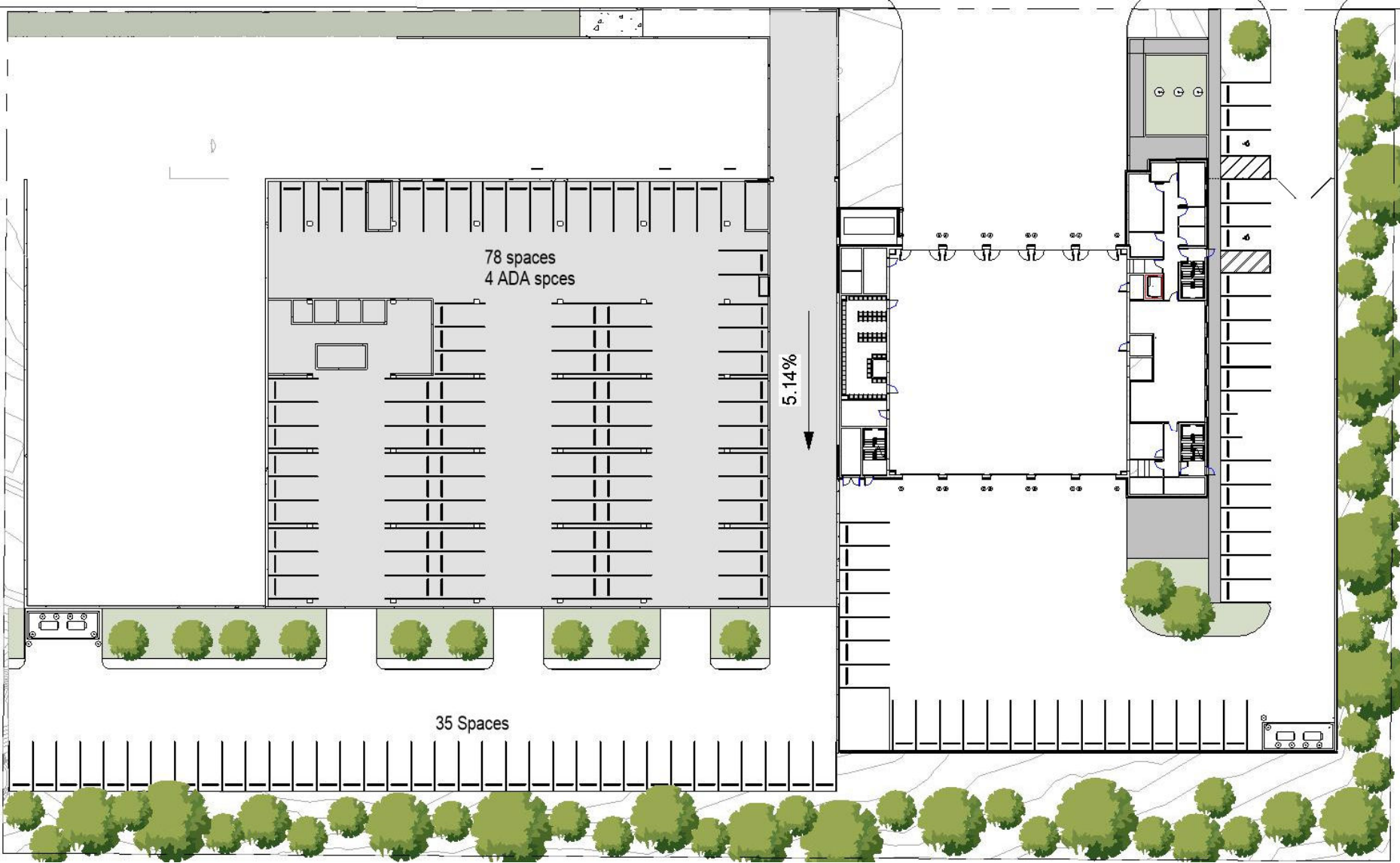
SHELTER: **36,927 GSF**

AFFORDABLE HOUSING: **67,458 GSF**

TOTAL GSF: **128,086 GSF**



# Consolidated Concept – Parking





# Penn Daw Fire Station, Emergency Shelter & Supportive Housing and Affordable Housing Consolidated Concept – West Street Perspective





Penn Daw Fire Station, Emergency Shelter & Supportive Housing and Affordable Housing  
**Consolidated Concept – East Street Perspective**





# Penn Daw Fire Station, Emergency Shelter & Supportive Housing and Affordable Housing Consolidated Concept – West Perspective



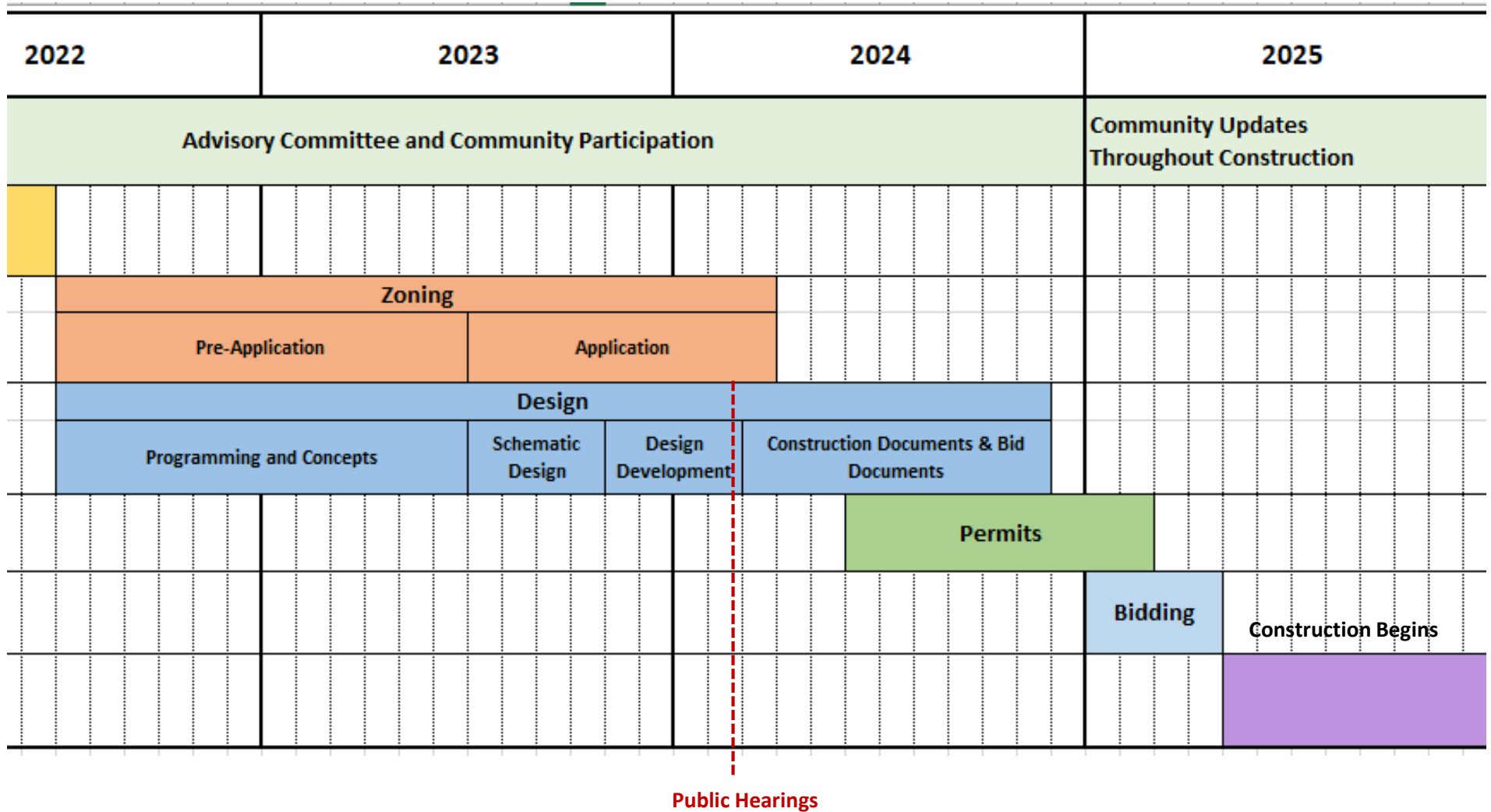


# Penn Daw Fire Station, Emergency Shelter & Supportive Housing and Affordable Housing Consolidated Concept – East Perspective





# Penn Daw Fire Station, Emergency Shelter & Supportive Housing and Affordable Housing Project Timeline



# Next Steps

Activity	Schedule
<b>Advisory Committee Meeting</b>	<b>July 13, 2023</b>
Community Meeting	July 27, 2023
Concept Design Completion	July 2023
Schematic Design Phase	August 2023 To October 2023





## Q & A

