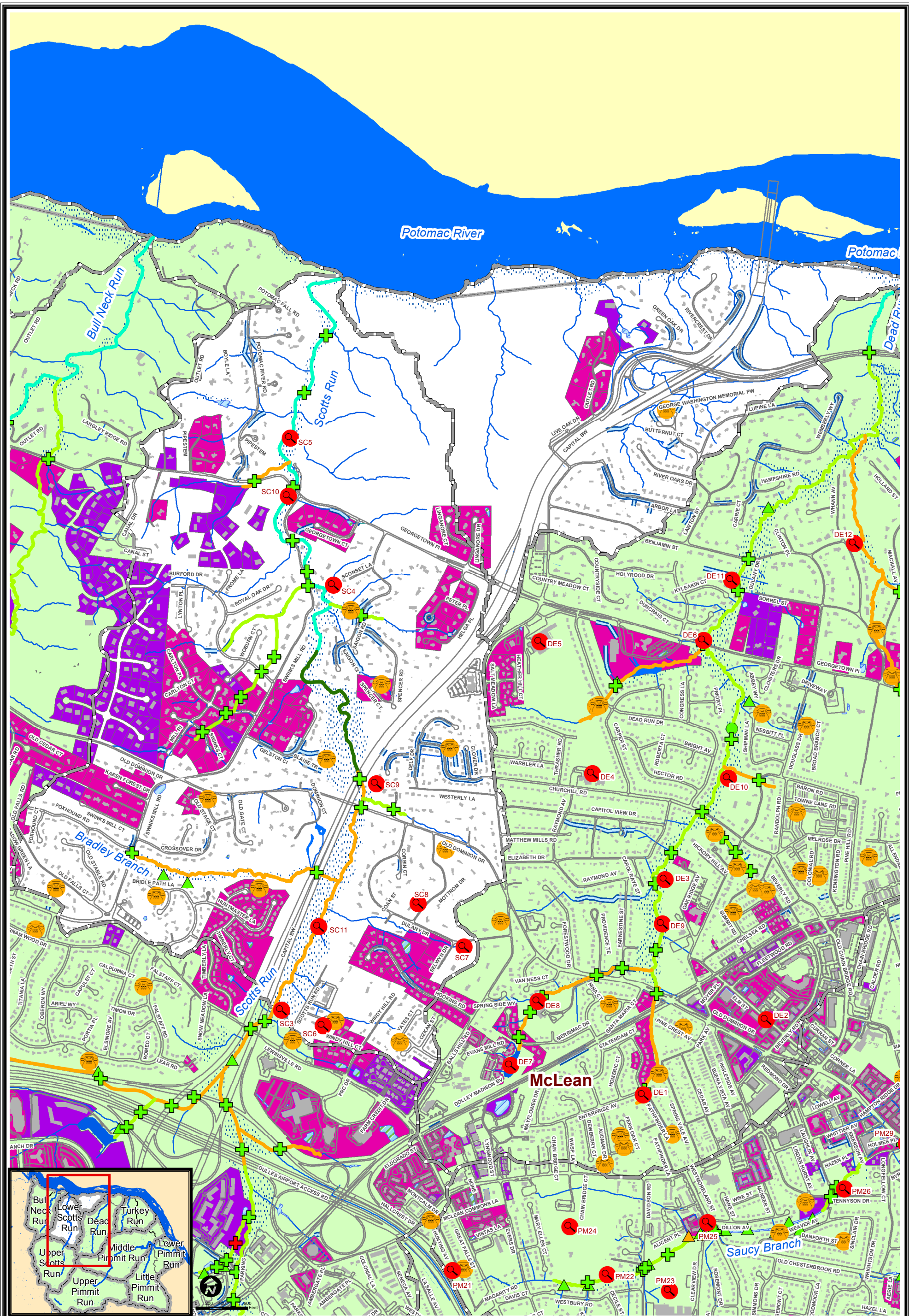


<ul style="list-style-type: none"> Subwatershed Boundary Roads Buildings Creeks/Streams 	<ul style="list-style-type: none"> Drainage Complaint Problem Locations Floodplains Paved Ditch 	Crossing Impact <ul style="list-style-type: none"> Minor to Moderate Impact Moderate to Severe Impact Severe to Extreme Impact 	Ditch Impact <ul style="list-style-type: none"> Minor to Moderate Impact Moderate to Severe Impact Severe to Extreme Impact 	Pipe Impact <ul style="list-style-type: none"> Minor to Moderate Impact Moderate to Severe Impact Severe to Extreme Impact 	<ul style="list-style-type: none"> Parcel Controlled by BMP Parcel Controlled by Detention Facility Dry Pond Wet Pond All Other Storm Facility Types 	Habitat Assessment <ul style="list-style-type: none"> No Assessment Very Poor Poor Fair Good Excellent
---	---	--	---	--	---	---

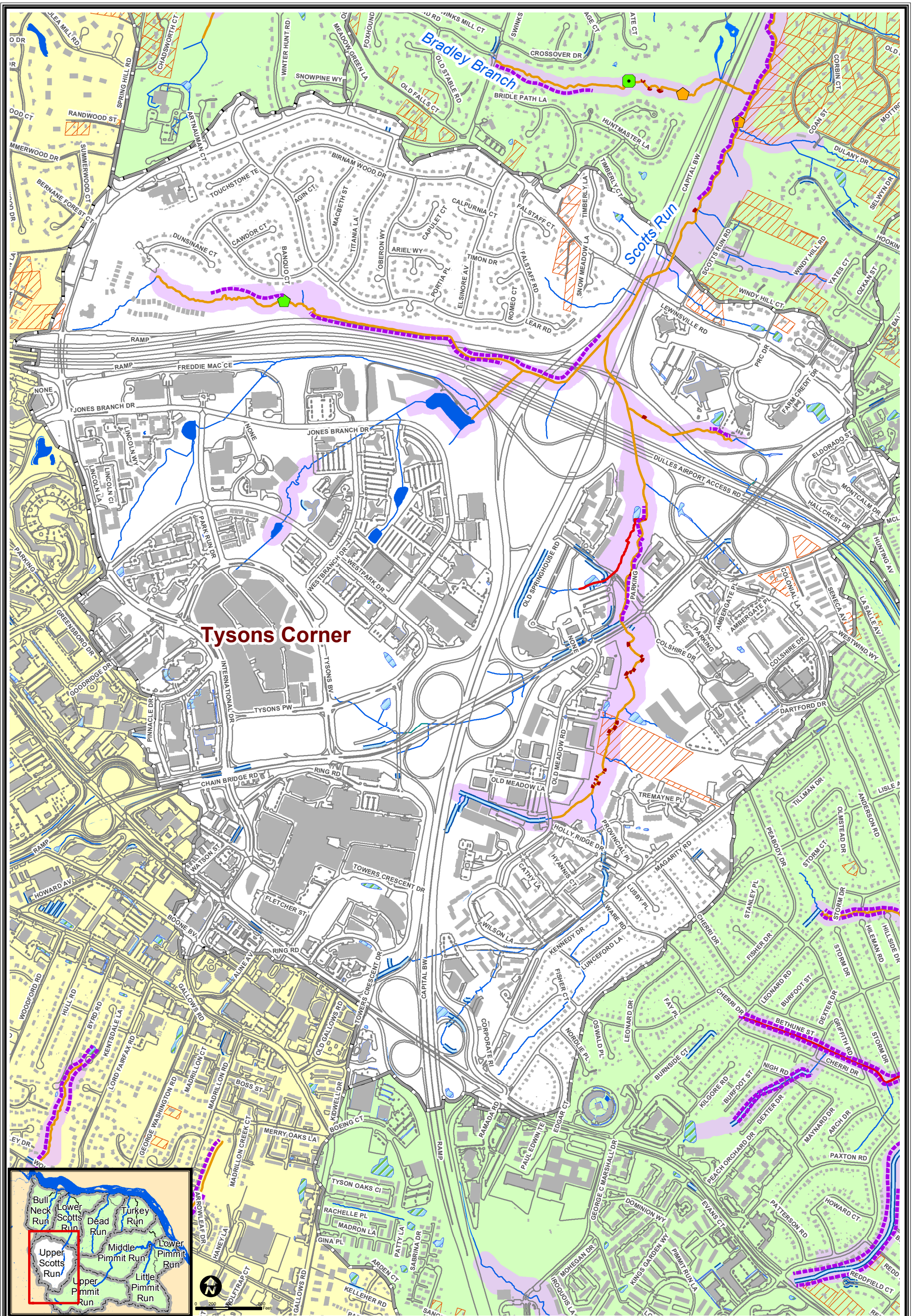


- Subwatershed Boundary
- Roads
- Buildings
- Creeks/Streams
- Drainage Complaint
- Problem Locations
- Floodplains
- Paved Ditch

- | Crossing Impact | Ditch Impact | Pipe Impact |
|---------------------------|---------------------------|---------------------------|
| Minor to Moderate Impact | Minor to Moderate Impact | Minor to Moderate Impact |
| Moderate to Severe Impact | Moderate to Severe Impact | Moderate to Severe Impact |
| Severe to Extreme Impact | Severe to Extreme Impact | Severe to Extreme Impact |

- Parcel Controlled by BMP
- Parcel Controlled by Detention Facility
- Dry Pond
- All Other Storm Facility Types
- Habitat Assessment: No Assessment
- Habitat Assessment: Very Poor
- Habitat Assessment: Poor
- Habitat Assessment: Fair
- Habitat Assessment: Good
- Habitat Assessment: Excellent

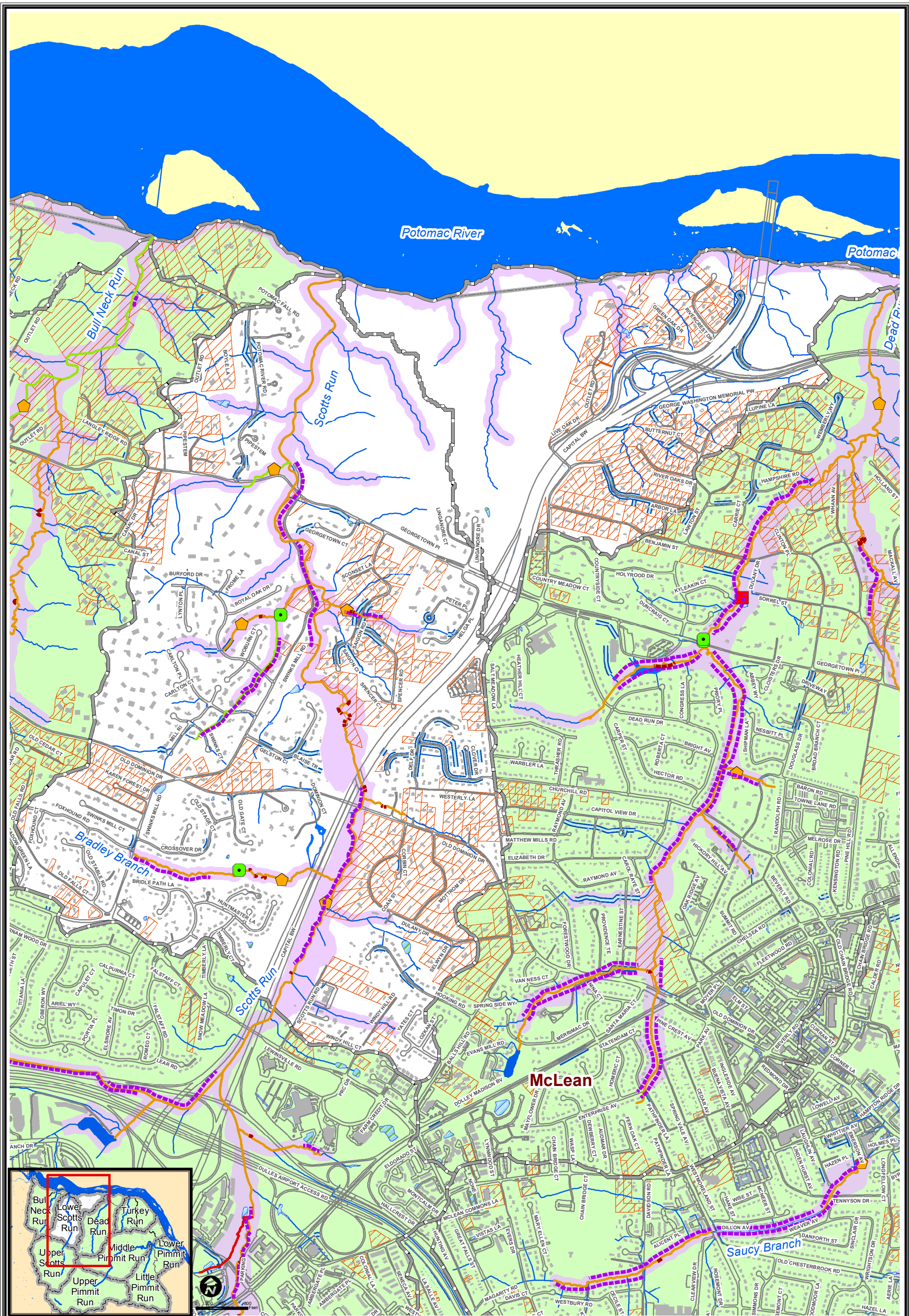
Map 5.2
Lower Scotts Run
Subwatershed Characteristics and
Storm Drain Infrastructure



Tysons Corner

<ul style="list-style-type: none"> Subwatershed Boundary Roads Buildings 	<ul style="list-style-type: none"> Creeks/Streams Paved Ditch 	<ul style="list-style-type: none"> Obstruction Impact Minor to Moderate Moderate to Severe Severe to Extreme 	<ul style="list-style-type: none"> Utility Impact Minor to Moderate Moderate to Severe Severe to Extreme 	<ul style="list-style-type: none"> Dump Site Impact Minor to Moderate Moderate to Severe Severe to Extreme 	<ul style="list-style-type: none"> CEM Category No Assessment Stable Channel Incised Channel Widening Channel Stabilizing Channel Stable Channel 	<ul style="list-style-type: none"> Headcut Height 0.5' to 1' Height 1' to 2' Height > 2' Height 	<ul style="list-style-type: none"> Stream Impact Insufficient Buffer Erosion 	<ul style="list-style-type: none"> On-Site Sewage Disposal System
---	---	--	--	--	---	--	---	--

Map 5.3
Upper Scotts Run Subwatershed
Stream Geomorphology and
Habitat Quality



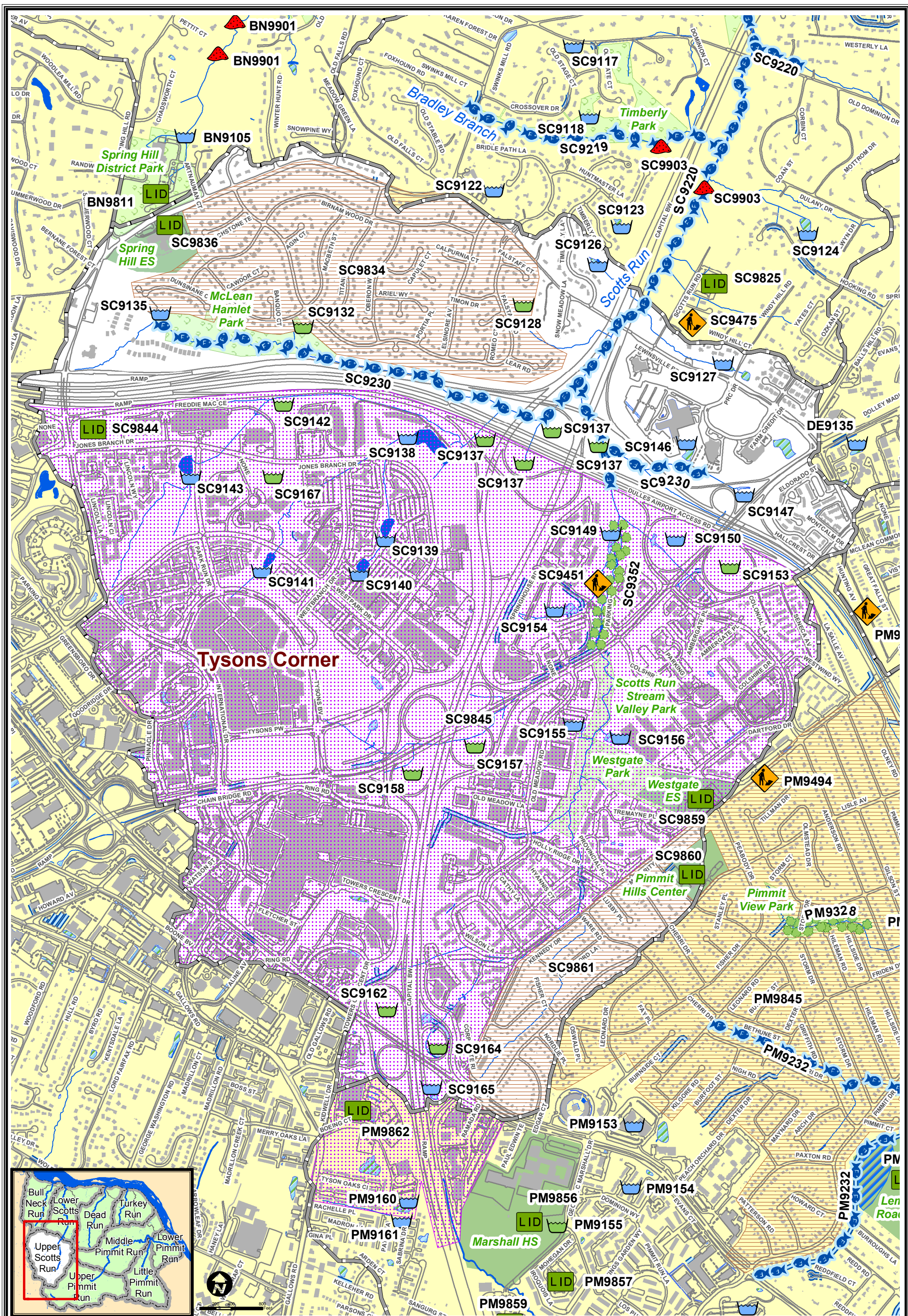
Potomac River

Potomac

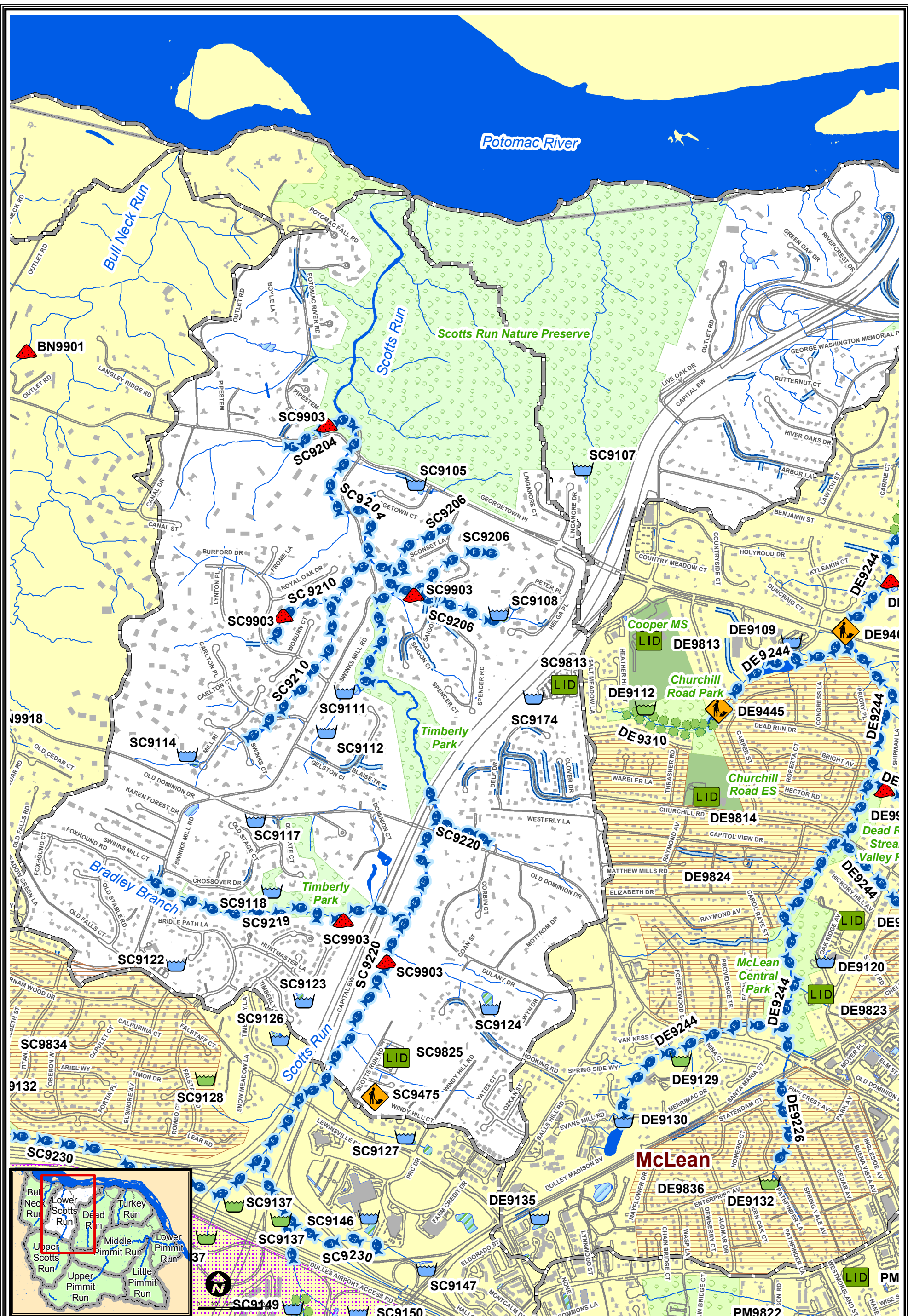
McLean

Map 5.4
Lower Scotts Run Subwatershed
Stream Geomorphology and
Habitat Quality

<ul style="list-style-type: none"> Subwatershed Boundary Roads Buildings 	<ul style="list-style-type: none"> Creeks/Streams Paved Ditch 	<ul style="list-style-type: none"> Obstruction Impact Minor to Moderate Moderate to Severe Severe to Extreme 	<ul style="list-style-type: none"> Utility Impact Minor to Moderate Moderate to Severe Severe to Extreme 	<ul style="list-style-type: none"> Dump Site Impact Minor to Moderate Moderate to Severe Severe to Extreme 	<ul style="list-style-type: none"> CEM Category No Assessment Stable Channel Incised Channel Widening Channel Stabilizing Channel Stable Channel 	<ul style="list-style-type: none"> Headcut Height 0.5' to 1' Height 1' to 2' Height > 2' Height 	<ul style="list-style-type: none"> Stream Impact Insufficient Buffer Erosion 	<ul style="list-style-type: none"> On-Site Sewage Disposal System
---	---	--	--	--	---	--	---	--



Map 5.5
Upper Scotts Run
Watershed Management
Plan Recommendations



<ul style="list-style-type: none"> Subwatershed Boundary Roads Buildings Creeks/Streams Paved Ditch 	<ul style="list-style-type: none"> Park Public School Property Improvement Floodplain Restoration 	<ul style="list-style-type: none"> Dumpsite/Obstruction Cleanup Low Impact Development Strategies BMP Retrofit New BMP 	<ul style="list-style-type: none"> Stream Restoration Buffer Restoration 	<ul style="list-style-type: none"> Dry Ponds Wet Ponds All Other Storm Facility Types 	<ul style="list-style-type: none"> Neighborhood Stormwater Improvement Area Tysons Corner Stormwater Management Area
--	---	--	--	--	--

Map 5.6
Lower Scotts Run
Watershed Management
Plan Recommendations