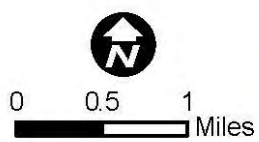
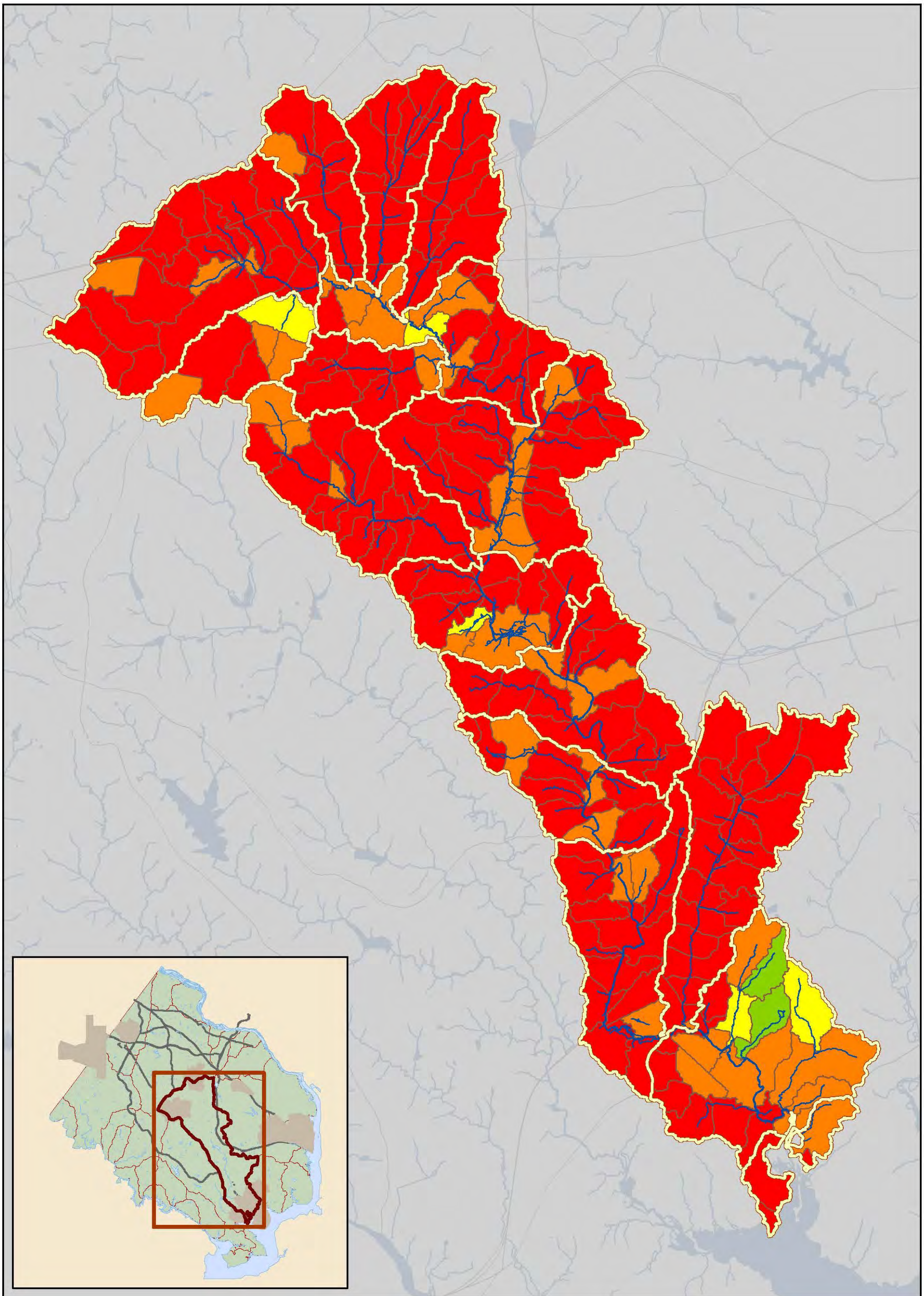




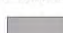






## **APPENDIX**





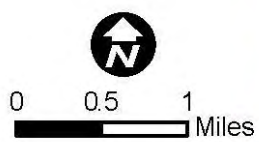
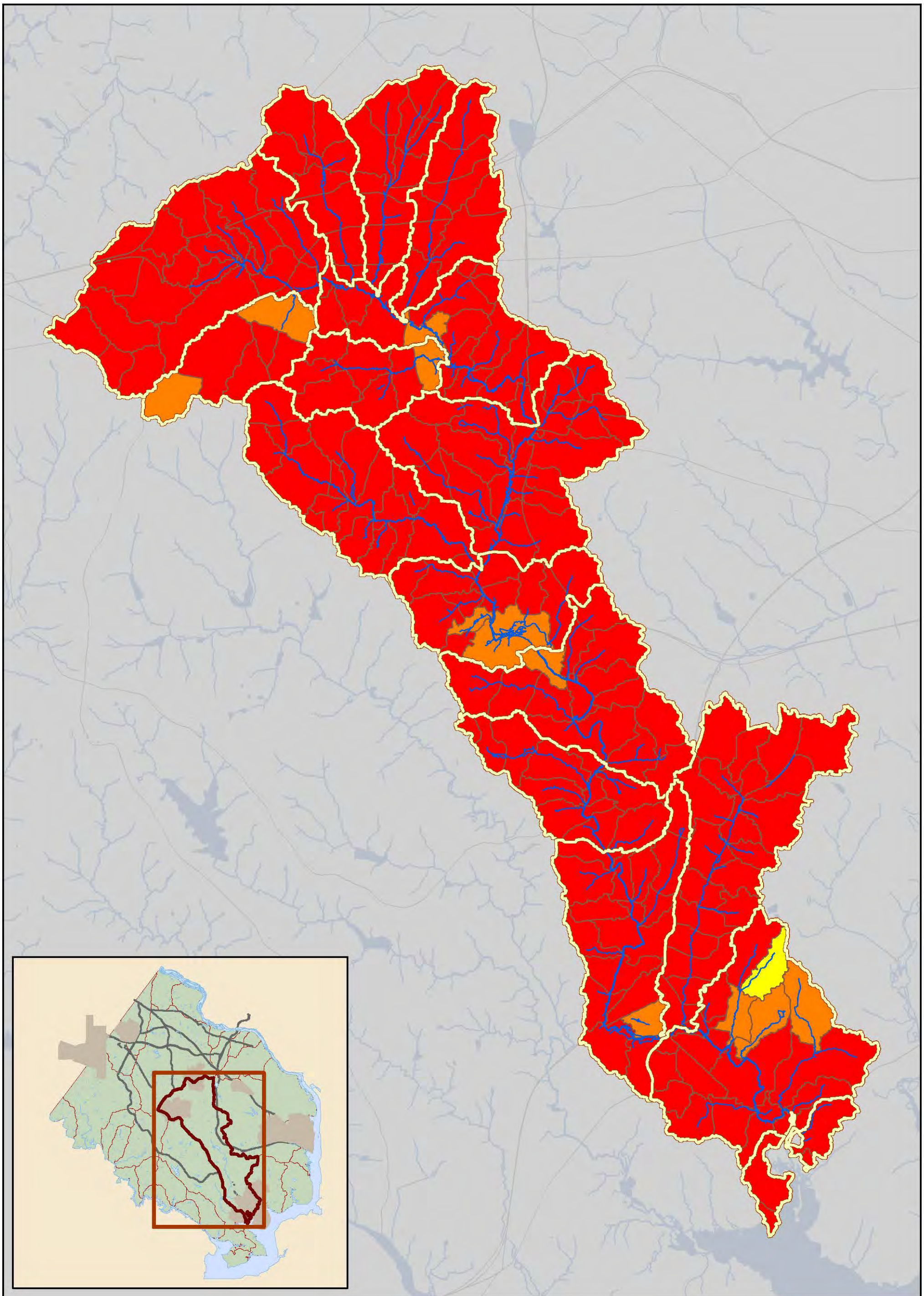
-  Watershed Boundary
-  Subwatershed Boundary
-  Lakes and Ponds
-  Streams





- Existing Total Nitrogen Load**
-  No Data
  -  Low
  -  Moderate
  -  High
  -  Very High






Map 2-1

**TN Loading Map**  
Accotink Creek Watershed





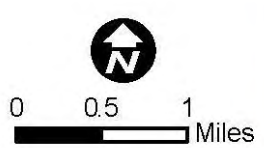
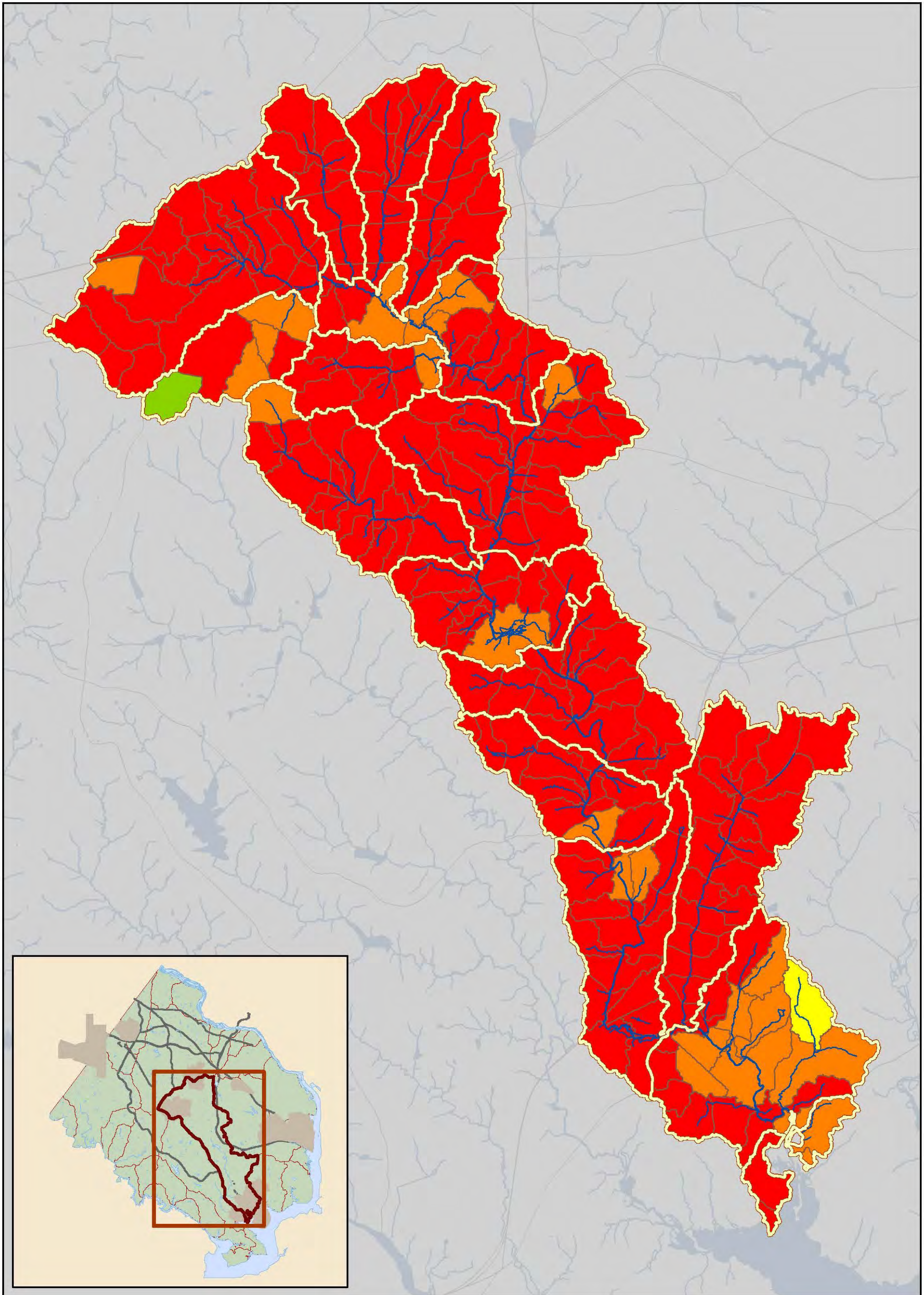
-  Watershed Boundary
-  Subwatershed Boundary
-  Lakes and Ponds
-  Streams





- Existing Total Phosphorus Load**
-  No Data
  -  High
  -  Low
  -  Very High
  -  Moderate

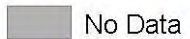


Map 2-2

**TP Loading Map**  
Accotink Creek Watershed

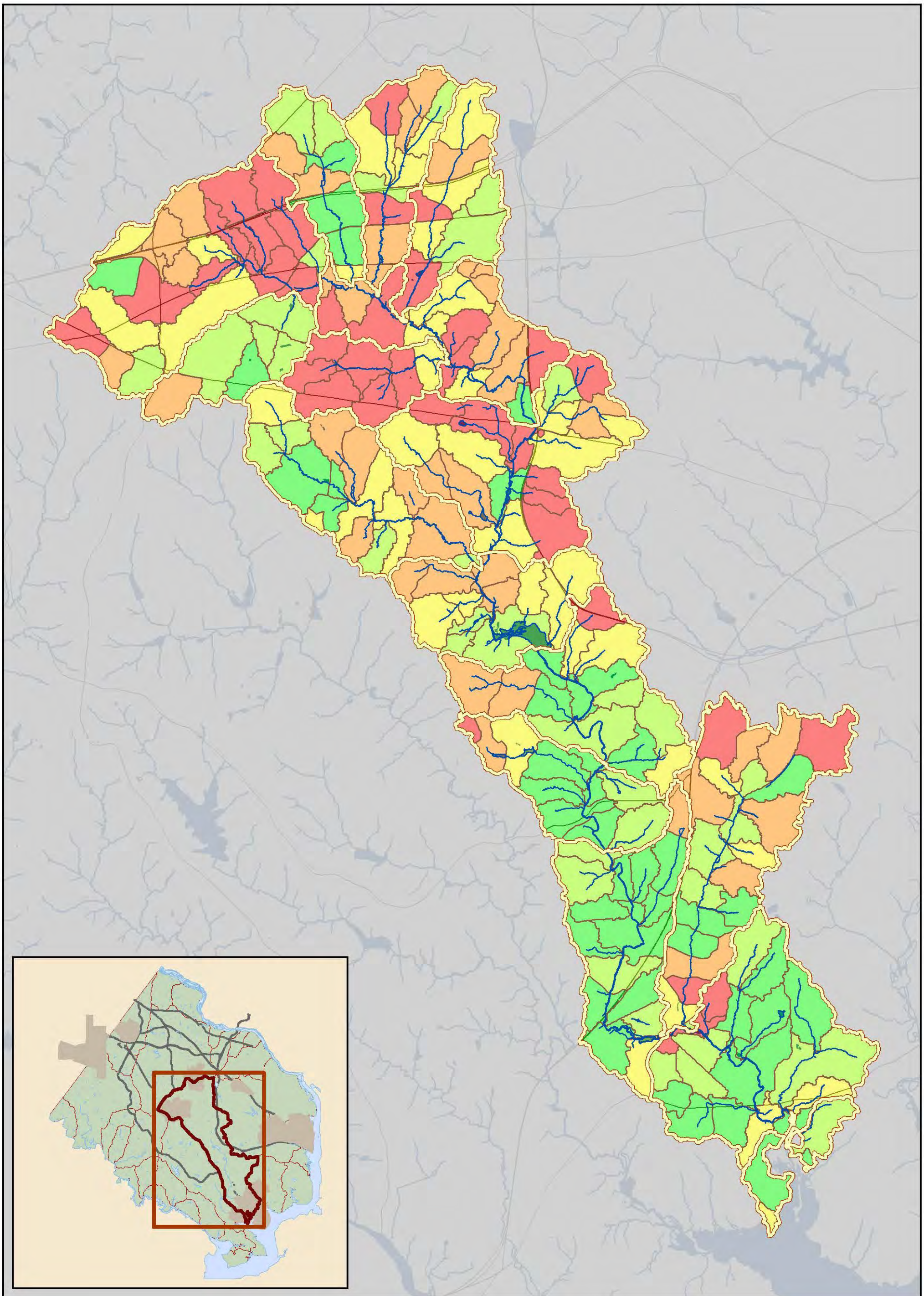




-  Watershed Boundary
-  Subwatershed Boundary
-  Lakes and Ponds
-  Streams

- Existing Total Suspended Solids Load**
-  No Data
  -  High
  -  Low
  -  Very High
  -  Moderate





Rank (from 1 to 205)

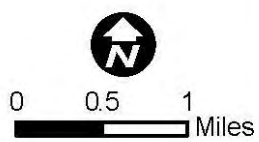
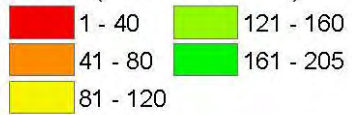


Figure 2-4  
**Subwatershed Ranking**  
 Accotink Creek Watershed



# Existing Land Use

# Future Land Use



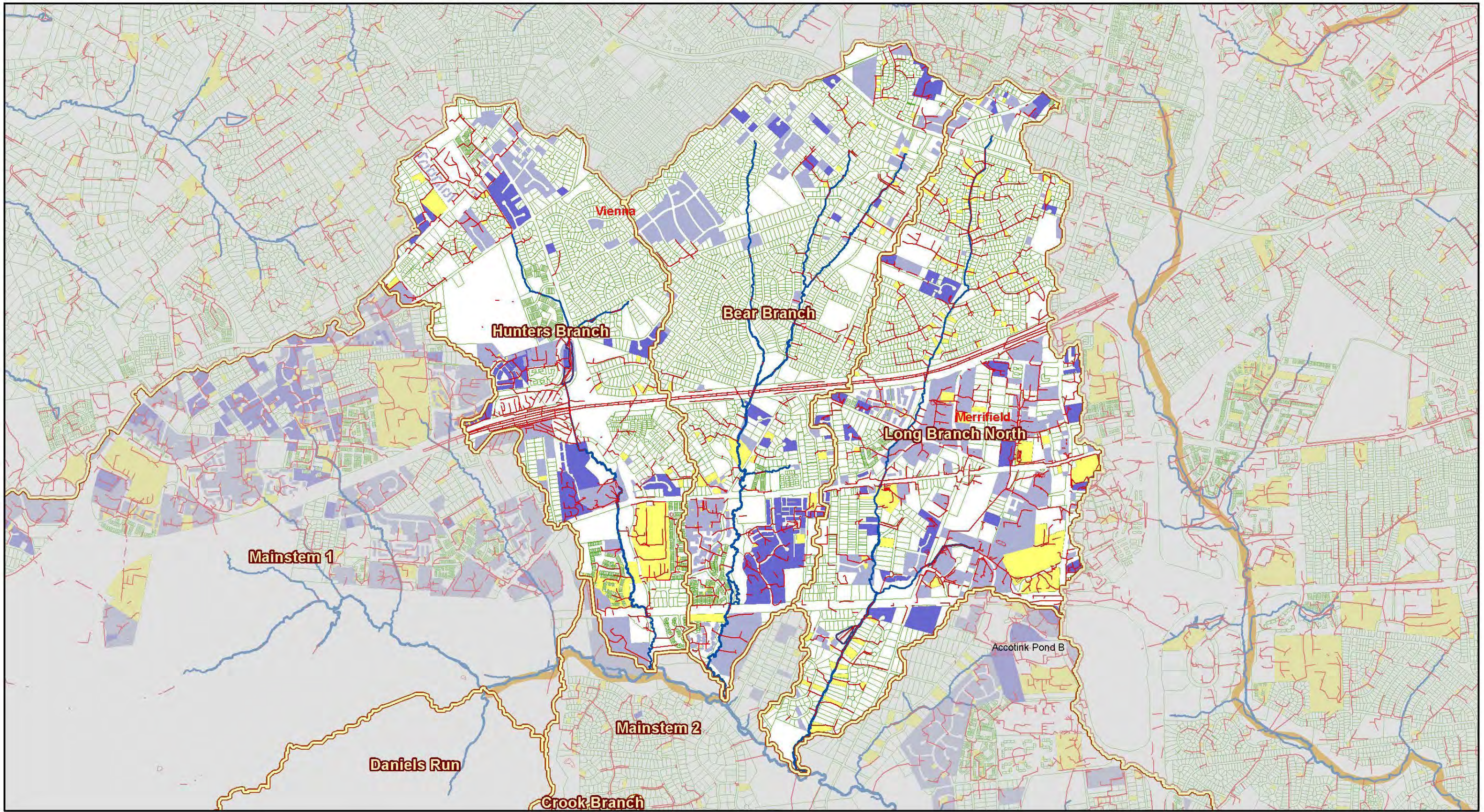
### Land Use

- |                          |                           |                            |                    |
|--------------------------|---------------------------|----------------------------|--------------------|
| Estate Residential       | High Intensity Commercial | Low Density Residential    | Open Space         |
| Golf Course              | Industrial                | Low Intensity Commercial   | Transportation     |
| High Density Residential | Institutional             | Medium Density Residential | Water              |
|                          |                           |                            | WMA Boundary       |
|                          |                           |                            | Change in Land Use |

Map 2-5

**Land Use Map**  
Bear Branch



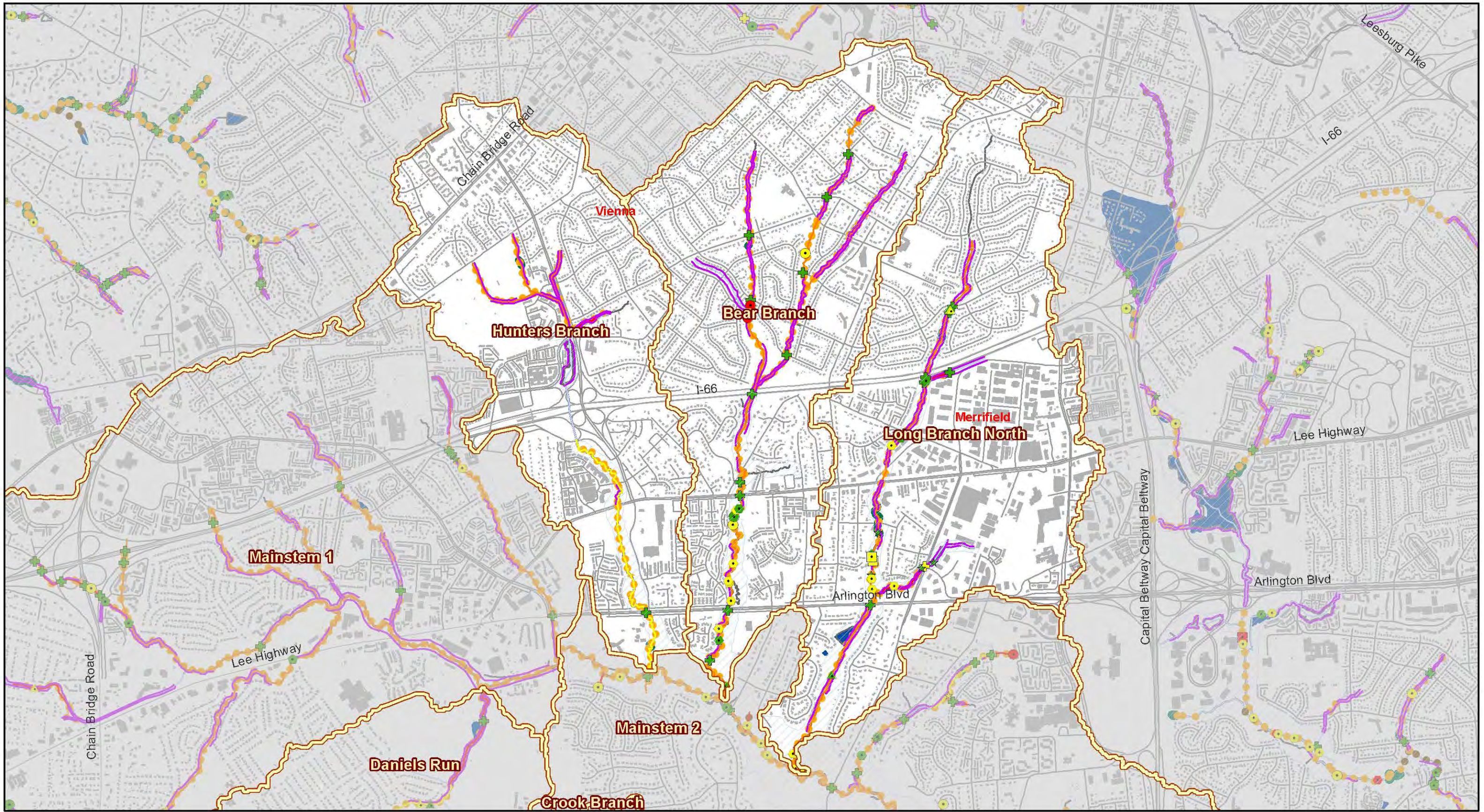


0 0.25 0.5 Miles

- |                     |                       |                      |   |
|---------------------|-----------------------|----------------------|---|
| WMA Boundary        | <b>Regional Ponds</b> | <b>Subarea</b>       | <b>MSMD Flooding/Drainage Complaints</b>    |
| 303d Listed Streams | Constructed           | Quantity and Quality | STMDRN; SWM/BMP                             |
| Stormnet Facilities | Planned               | Quantity             | Public Identified Problem Areas 2003 - 2006 |
| Stormnet Arcs       |                       |                      |   |
| Parcels             |                       |                      |   |

Map 2-6  
**Stormwater Infrastructure Map**  
 Hunters Branch  
 Bear Branch  
 Long Branch North





0 0.25 0.5 Miles

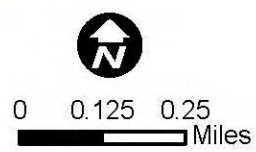
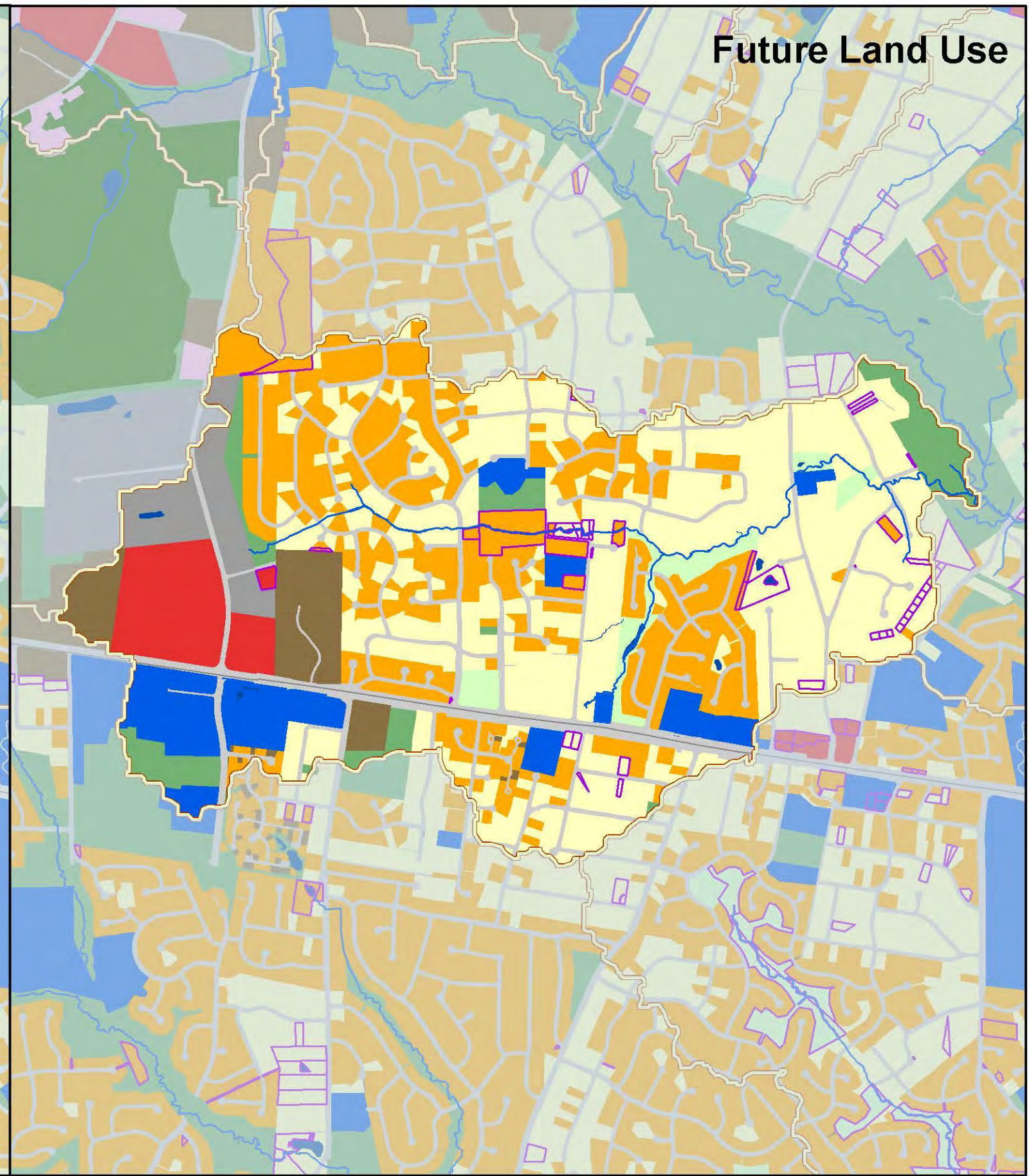
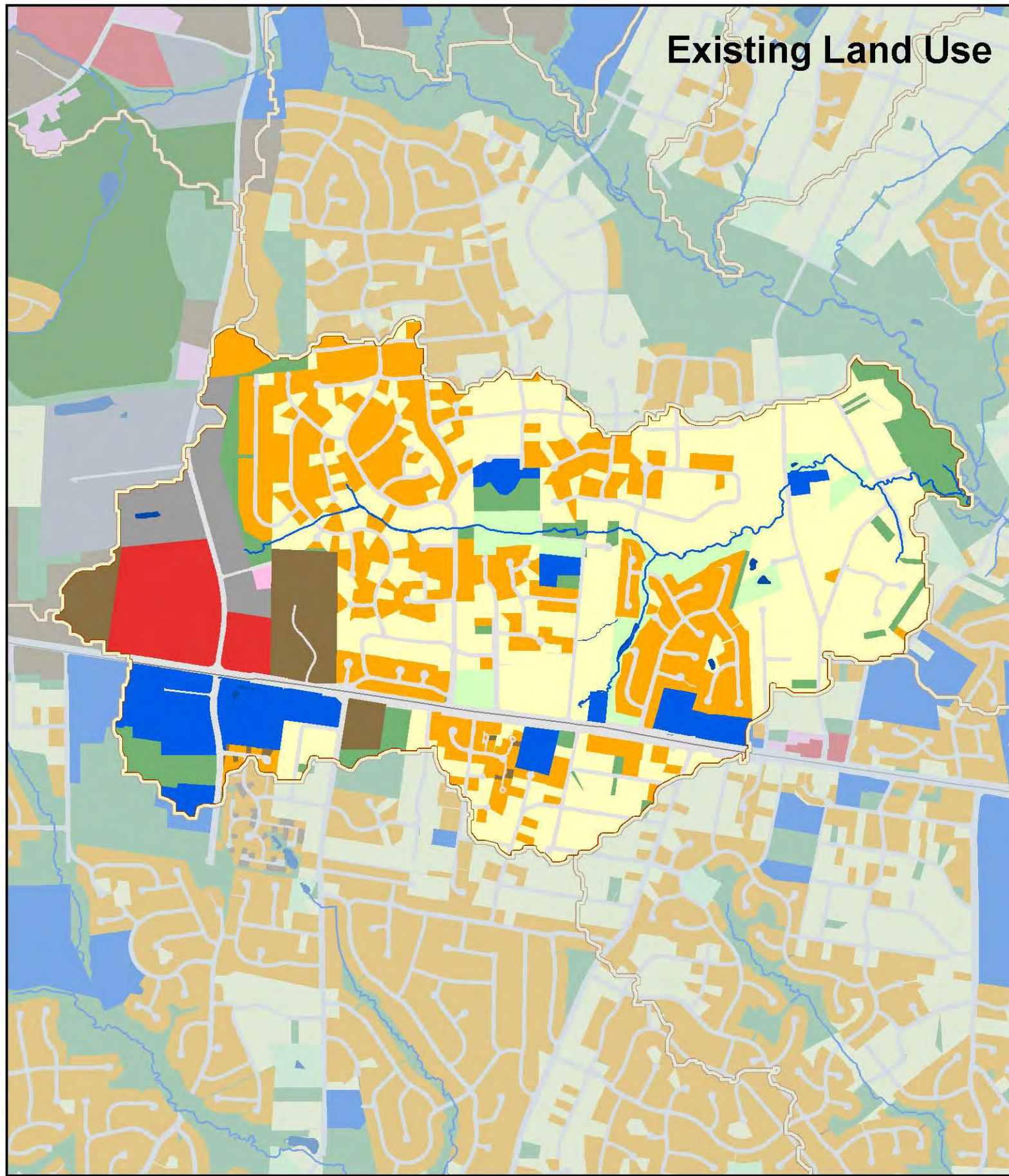
Obstruction Impact	Dump Site Impact	Pipe Impact	Ditch Impact	Utility Impact	Crossing Impact	Head Cut Height
Minor to Moderate	Minor to Moderate	Minor to Moderate	Minor to Moderate	Minor to Moderate	Minor to Moderate	0.5' - 1.0'
Moderate to Severe	Moderate to Severe	Moderate to Severe	Moderate to Severe	Moderate to Severe	Moderate to Severe	1' - 2'
Severe to Extreme	Severe to Extreme	Severe to Extreme	Severe to Extreme	Severe to Extreme	Severe to Extreme	>2'
Habitat Rating	CEM Category		Resource Protection Area (RPA)		Lakes and Ponds	Deficient Buffer
Excellent	CEM 2 - Incising	Resource Protection Area (RPA)	Lakes and Ponds	Deficient Buffer		
Good	CEM 3 - Widening	WMA Boundary	Erosion			
Fair						
Very Poor						
Poor						
Unassessed						

Map 2-7  
**Stream Condition Map**  
 Hunters Branch  
 Bear Branch  
 Long Branch North



# Existing Land Use

# Future Land Use



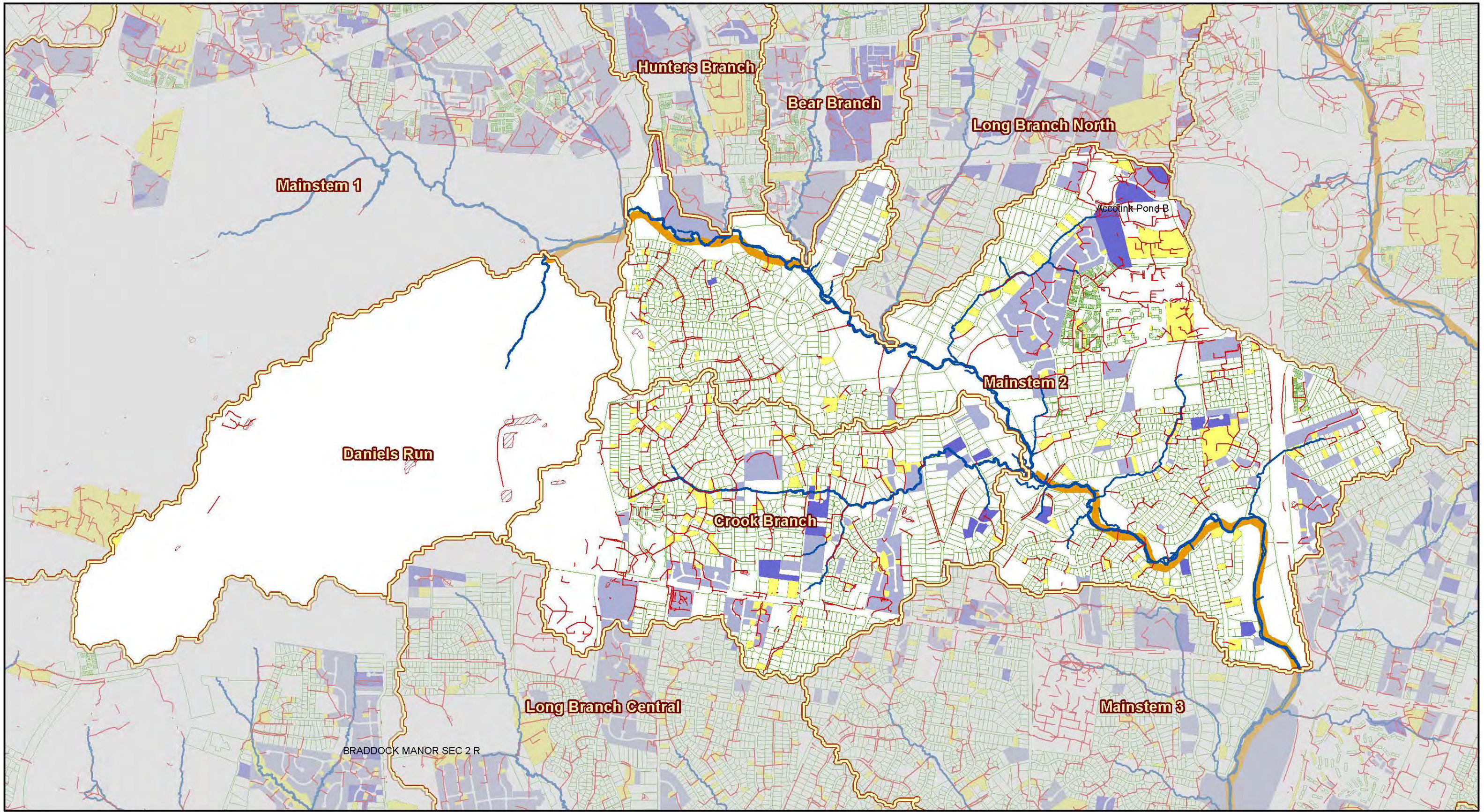
### Land Use

- |                          |                           |                            |                    |
|--------------------------|---------------------------|----------------------------|--------------------|
| Estate Residential       | High Intensity Commercial | Low Density Residential    | Open Space         |
| Golf Course              | Industrial                | Low Intensity Commercial   | Transportation     |
| High Density Residential | Institutional             | Medium Density Residential | Water              |
|                          |                           |                            | WMA Boundary       |
|                          |                           |                            | Change in Land Use |

Map 2-8

**Land Use Map**  
Crook Branch





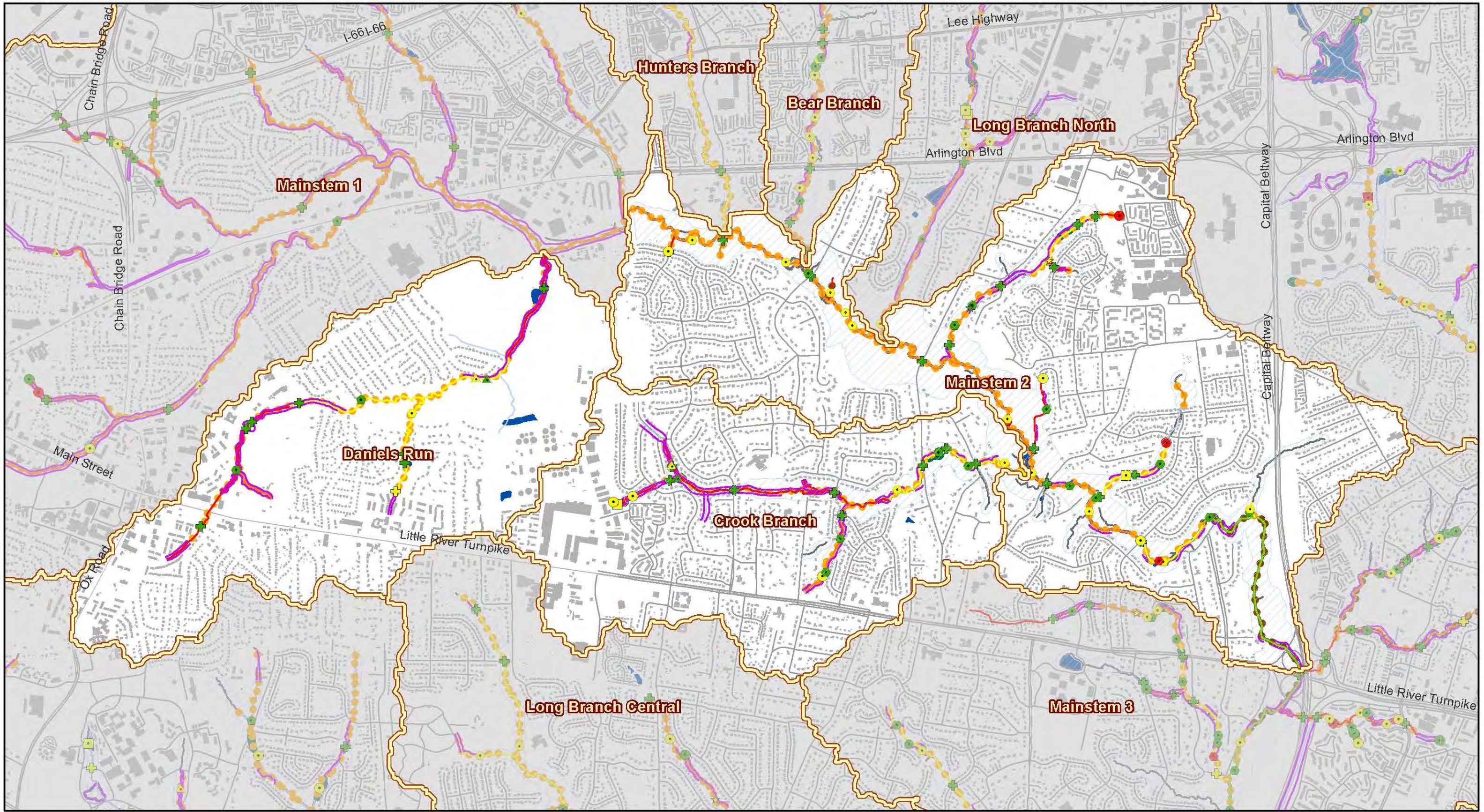
0 0.25 0.5 Miles

- |                     |                       |                      |   |
|---------------------|-----------------------|----------------------|---|
| WMA Boundary        | <b>Regional Ponds</b> | <b>Subarea</b>       | <b>MSMD Flooding/Drainage Complaints</b>    |
| 303d Listed Streams | Constructed           | Quantity and Quality | STMDRN; SWM/BMP                             |
| Stormnet Facilities | Planned               | Quantity             | Public Identified Problem Areas 2003 - 2006 |
| Stormnet Arcs       |                       |                      |   |
| Parcels             |                       |                      |   |

Map 2-9  
**Stormwater Infrastructure Map**

Daniels Run  
 Crook Branch  
 Mainstem 2





0 0.25 0.5 Miles

Obstruction Impact	Dump Site Impact	Pipe Impact	Ditch Impact	Utility Impact	Crossing Impact	Head Cut Height
Minor to Moderate	Minor to Moderate	Minor to Moderate	Minor to Moderate	Minor to Moderate	Minor to Moderate	0.5' - 1.0'
Moderate to Severe	Moderate to Severe	Moderate to Severe	Moderate to Severe	Moderate to Severe	Moderate to Severe	1' - 2'
Severe to Extreme	Severe to Extreme	Severe to Extreme	Severe to Extreme	Severe to Extreme	Severe to Extreme	>2'

Habitat Rating			CEM Category	
Excellent	Fair	Very Poor	CEM 2 - Incising	CEM 3 - Widening
Good	Poor	Unassessed		

Resource Protection Area (RPA)	Lakes and Ponds	Deficient Buffer
WMA Boundary	Erosion	

Map 2-10

# Stream Condition Map

Daniels Run  
Crook Branch  
Mainstem 2