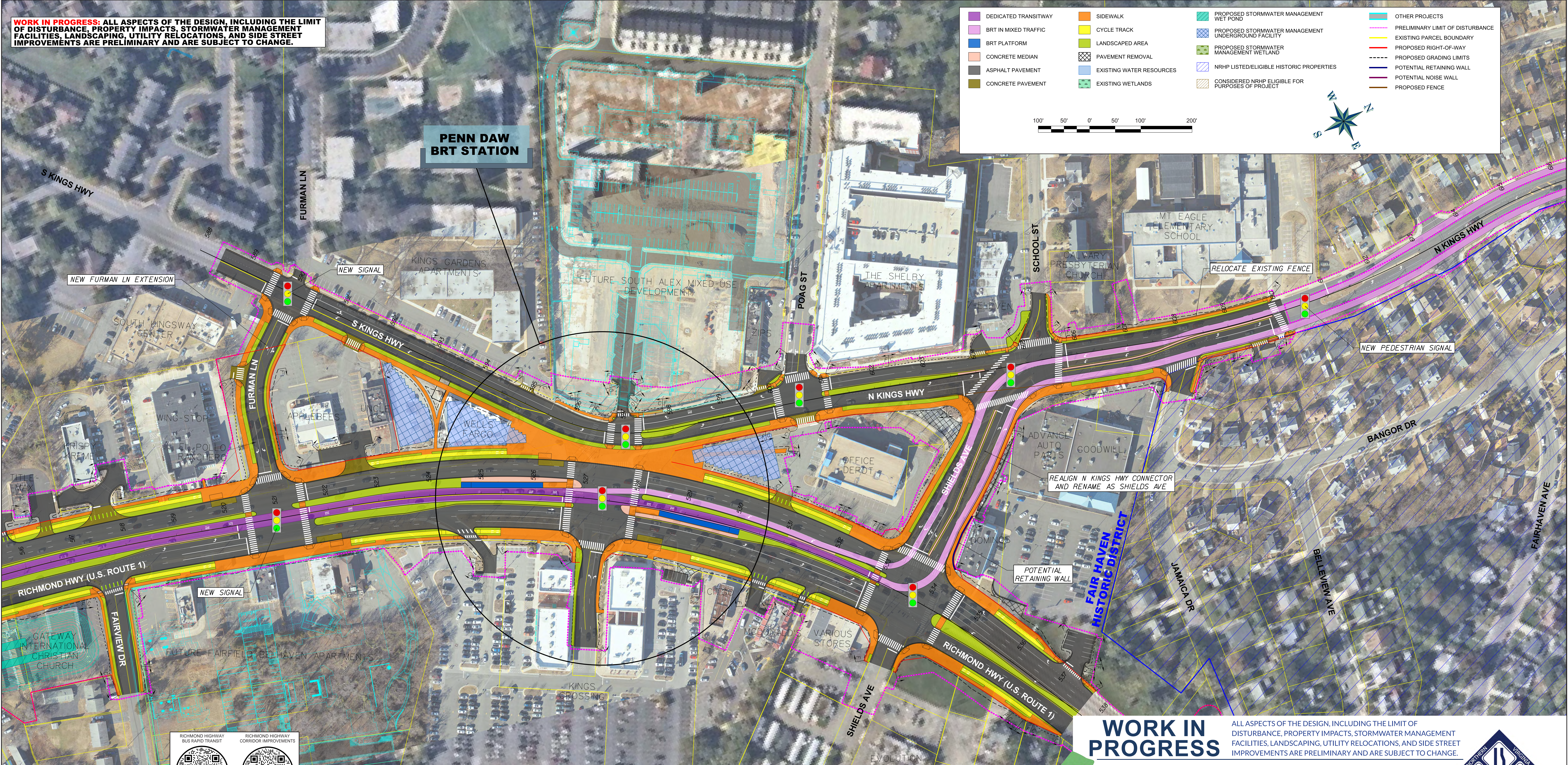
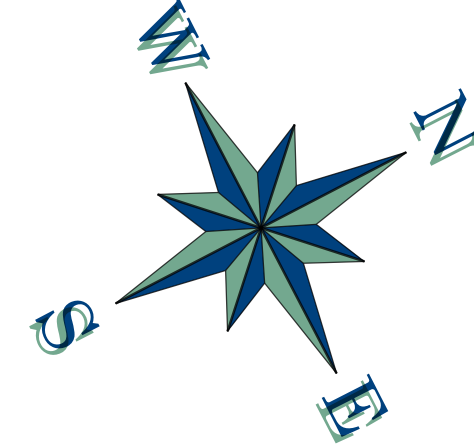


WORK IN PROGRESS: ALL ASPECTS OF THE DESIGN, INCLUDING THE LIMIT OF DISTURBANCE, PROPERTY IMPACTS, STORMWATER MANAGEMENT FACILITIES, LANDSCAPING, UTILITY RELOCATIONS, AND SIDE STREET IMPROVEMENTS ARE PRELIMINARY AND ARE SUBJECT TO CHANGE.

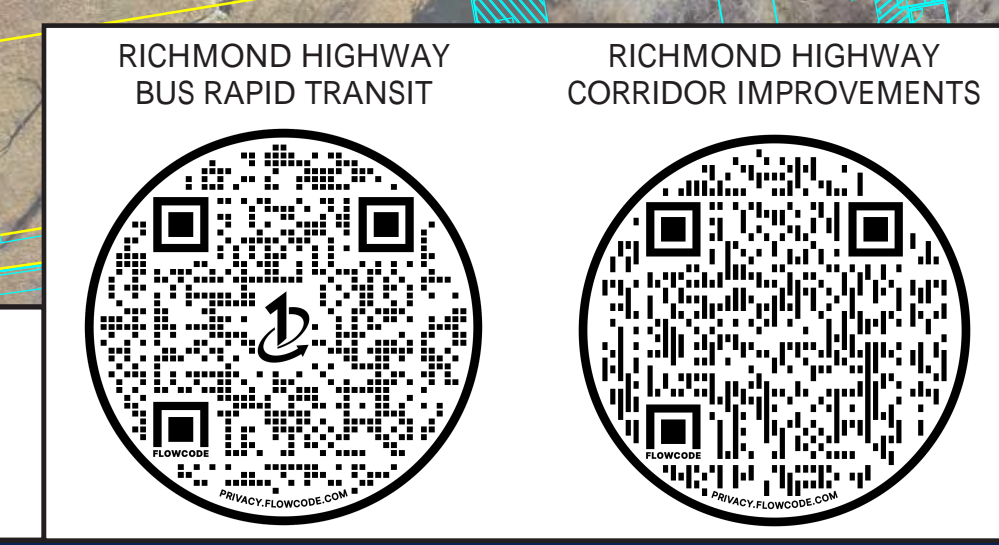
- | | | | |
|----------------------|--------------------------|---|----------------------------------|
| DEDICATED TRANSITWAY | SIDEWALK | PROPOSED STORMWATER MANAGEMENT WET POND | OTHER PROJECTS |
| BRT IN MIXED TRAFFIC | CYCLE TRACK | PROPOSED STORMWATER MANAGEMENT UNDERGROUND FACILITY | PRELIMINARY LIMIT OF DISTURBANCE |
| BRT PLATFORM | LANDSCAPED AREA | PROPOSED STORMWATER MANAGEMENT WETLAND | EXISTING PARCEL BOUNDARY |
| CONCRETE MEDIAN | PAVEMENT REMOVAL | NRHP LISTED/ELIGIBLE HISTORIC PROPERTIES | PROPOSED RIGHT-OF-WAY |
| ASPHALT PAVEMENT | EXISTING WATER RESOURCES | CONSIDERED NRHP ELIGIBLE FOR PURPOSES OF PROJECT | PROPOSED GRADING LIMITS |
| CONCRETE PAVEMENT | EXISTING WETLANDS | | POTENTIAL RETAINING WALL |
| | | | POTENTIAL NOISE WALL |
| | | | PROPOSED FENCE |



PENN DAW BRT STATION

WORK IN PROGRESS

ALL ASPECTS OF THE DESIGN, INCLUDING THE LIMIT OF DISTURBANCE, PROPERTY IMPACTS, STORMWATER MANAGEMENT FACILITIES, LANDSCAPING, UTILITY RELOCATIONS, AND SIDE STREET IMPROVEMENTS ARE PRELIMINARY AND ARE SUBJECT TO CHANGE.



APRIL 2022



WORK IN PROGRESS RICHMOND HIGHWAY Bus Rapid Transit Study

ALL ASPECTS OF THE DESIGN, INCLUDING THE LIMIT OF DISTURBANCE, PROPERTY IMPACTS, STORMWATER MANAGEMENT FACILITIES, LANDSCAPING, UTILITY RELOCATIONS, AND SIDE STREET IMPROVEMENTS ARE PRELIMINARY AND ARE SUBJECT TO CHANGE.

SHEET No. 6
KINGS HIGHWAY INTERSECTION IMPROVEMENTS



FC DOT

Serving Fairfax County for 30 Years and More

