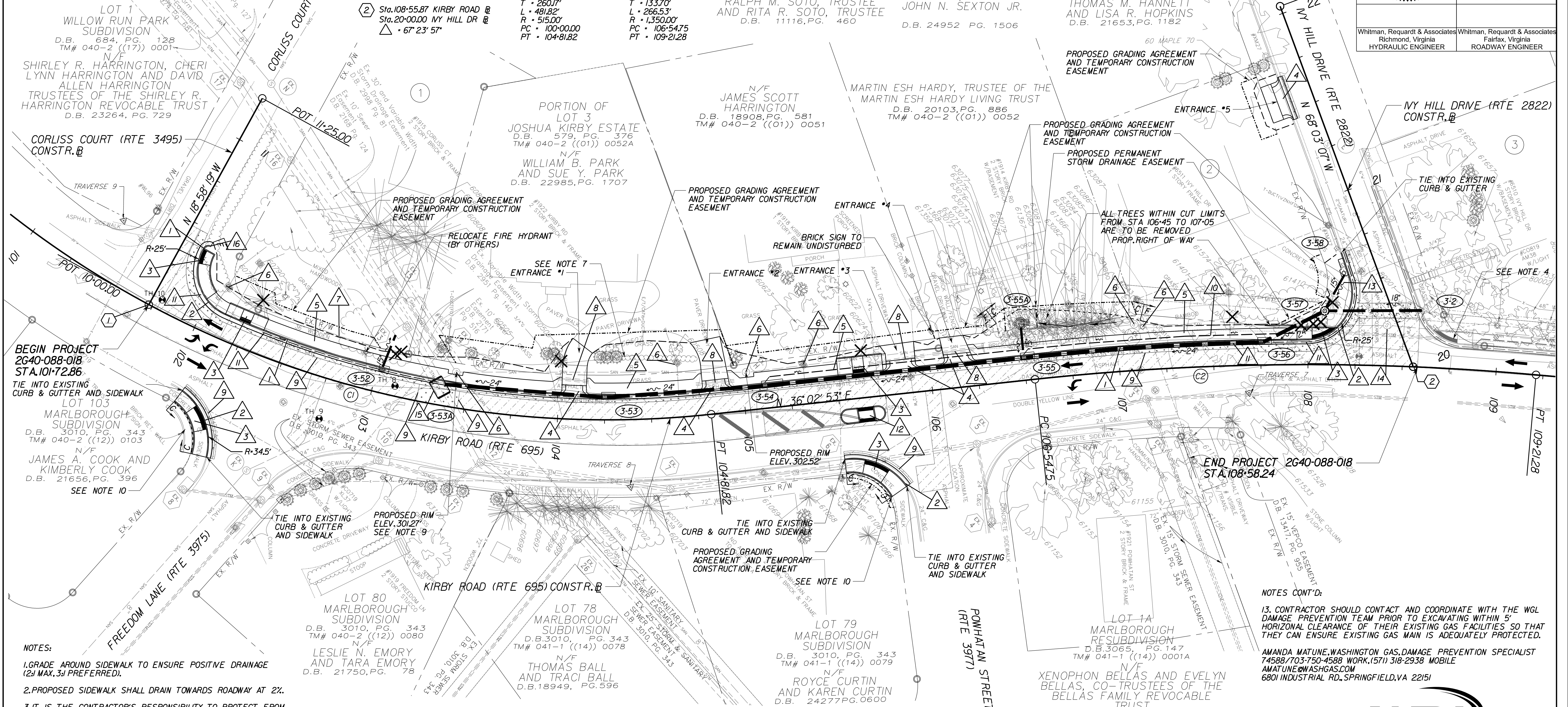


PROJECT MANAGER J.ATESA TURNER, P.E. (703) 977-5834
 SURVEYED BY DATE BICE ASSOCIATES, (703) 968-3200, MAY 28, 2015
 DESIGN BY WHITMAN, REQUARDT & ASSOCIATES, LLP (703) 293-9717
 SUBSURFACE UTILITY BY DATE SD DEEP, INC. (703) 361-6005, JUNE 26, 2015

POINT #	NORTHING	EASTING	ELEVATION	DESCRIPTION
7	7018307.100	11862504.410	312.55	TRV 7
8	7018030.240	11862320.710	304.33	TRV 8
9	7017925.820	11862035.140	297.93	TRV 9

Whitman, Requardt & Associates Richmond, Virginia HYDRAULIC ENGINEER	Whitman, Requardt & Associates Fairfax, Virginia ROADWAY ENGINEER



- NOTES:**
- GRADE AROUND SIDEWALK TO ENSURE POSITIVE DRAINAGE (2" MAX, 3" PREFERRED).
 - PROPOSED SIDEWALK SHALL DRAIN TOWARDS ROADWAY AT 2%.
 - IT IS THE CONTRACTOR'S RESPONSIBILITY TO PROTECT FROM HARM OR REPLACE UNDER LICENSED LAND SURVEYOR ALL PROPERTY MONUMENTATION DISTURBED BY CONSTRUCTION.
 - PROPOSED IMPROVEMENTS PROJECT NO. 2640-088-017
 - SEE SHEET 3B FOR DRAINAGE DESCRIPTIONS.
 - SEE SHEET 2C(1)-2C(2) FOR ENTRANCE DETAILS.
 - ALL VEGETATION WITHIN THE LIMITS OF CUT & FILL SHALL BE REMOVED, UNLESS SPECIFICALLY NOTED OTHERWISE ON PLANS.
 - SEE SHEET 1B(1) FOR TREE REMOVAL TABLE.
 - EXPANSION MATERIAL TO BE PROVIDED BETWEEN EXISTING SANITARY SEWER MANHOLE STRUCTURE L AND SIDEWALK.
 - CONTRACTOR SHALL AVOID IMPACTS TO EXISTING VEGETATION AND SIGNAGE WHILE CONSTRUCTING CURB RAMP.
 - ADJACENT TO 6511 IVY HILL DRIVE, CONTRACTOR SHALL REMOVE BAMBOO WITHIN RIGHT OF WAY AND THE EX. 15' EASEMENT FOR PUBLIC USE. THE BAMBOO REMOVAL SHALL INCLUDE, BUT NOT BE LIMITED TO, CUTTING TO GROUND LEVEL AND REMOVING THE CUT BAMBOO AND RHIZOMES.
 - CONTRACTOR SHALL USE CAUTION WHEN EXCAVATING WITHIN 5 FEET OF EXISTING WASHINGTON GAS AND SANITARY SEWER FACILITIES.

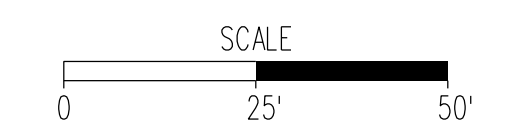
LEGEND

- | | | |
|--------------------------------------|-----------------------------------|---|
| Proposed Mill and Overlay | ST'D VDOT CG-6 REQUIRED | FULL DEPTH SAW CUT |
| Proposed Full Depth Pavement | ST'D VDOT RADIAL CG-6 REQUIRED | ST'D VDOT UD-3 REQUIRED |
| Proposed Demolition of Pavement | ST'D VDOT CG-12 TYPE B REQUIRED | ST'D VDOT UD-4 REQUIRED |
| Proposed Graded "V" Ditch | ST'D VDOT CG-9D REQUIRED | ST'D VDOT CG-12 TYPE M2 REQUIRED |
| Denotes Tree/Shrub Removal | 6' WIDE CONCRETE SIDEWALK | REMOVE CONCRETE DRIVEWAY ENTRANCE WITHIN RIGHT OF WAY |
| Denotes Construction Limits in Cuts | ADJUST UTILITY TO FINAL GRADE | MANHOLE TOP SHALL BE FLUSH WITH PROPOSED FINISHED GRADE |
| Denotes Construction Limits in Fills | REMOVE AND REPLACE EXISTING FENCE | PROP. BOX CULVERT MODIFICATION, SEE SHEETS 2E(1)-2E(2) |
| | REMOVE EXISTING CULVERT | ST'D VDOT RADIAL CG-6 TURNDOWN EDGE REQUIRED, R-3 |

NOTES CONT'D:

13. CONTRACTOR SHOULD CONTACT AND COORDINATE WITH THE WGL DAMAGE PREVENTION TEAM PRIOR TO EXCAVATING WITHIN 5' HORIZONTAL CLEARANCE OF THEIR EXISTING GAS FACILITIES SO THAT THEY CAN ENSURE EXISTING GAS MAIN IS ADEQUATELY PROTECTED.

AMANDA MATUNE, WASHINGTON GAS, DAMAGE PREVENTION SPECIALIST
 74588/703-750-4588 WORK, (571) 318-2938 MOBILE
 AMATUNE@WASHGAS.COM
 6801 INDUSTRIAL RD., SPRINGFIELD, VA 22151



EMERGENCY POLICE - FIRE - RESCUE 911			
FAIRFAX COUNTY, VIRGINIA			
DEPARTMENT OF PUBLIC WORKS AND ENVIRONMENTAL SERVICES-UTILITIES DESIGN & CONSTRUCTION DIVISION 12000 GOVERNMENT CENTER PARKWAY, SUITE 463 FAIRFAX, VA., 22035-0052			
OFFICE OF CAPITAL FACILITIES 703-324-5800		KIRBY ROAD WALKWAY FROM IVY HILL DR TO CORLISS CT PLAN SHEET	
PROJECT NO: 2640-088-018		SCALE 1"=25'	
DESIGNED: NDD		SHEET 3	
DRAFTED: EJK		CHECKED: RBH	
DESCRIPTION	BY	APPROVED	DATE