

Commercial Revitalization District (CRD) Maintenance Program Update

Level of Service Review

- **October 11, 2016 – Board endorsed Maintenance Program 4**
 - Expanded current services to include County maintained, “Improved” and VDOT maintained landscaping and infrastructure
 - Added two positions to implement and expand program
 - Positions filled in FY19
 - Authorized replacement and repair of walkways within the CRDs
 - Authorized maintenance, repair and improvement of all streetscape

Level of Service Review



CRD Projected Growth

CRD	Current Square Footage (frontage)	Long-Term Square Footage (frontage plus street sweeping square footage)	Percent Increase
Annandale	150,656	578,256	283.8%
Baileys	417,294	799,194	91.5%
McLean	23,478	485,430	1,967.6%
Route 1	156,654	1,917,894	1,124.3%
Springfield	64,440	397,465	516.8%
Total	812,522	4,178,239	414.2%

FY19

- Staff program
- CRD inventory
- Re-investment projects
- Expand levels of service

FY20

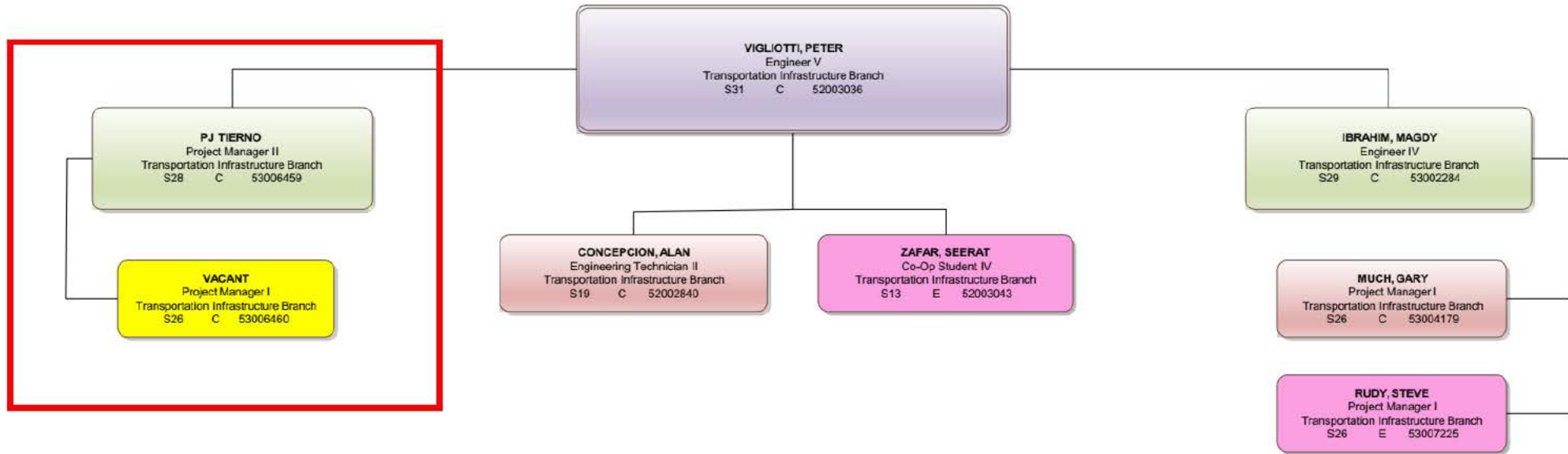
- Execute strategic/work plan
- Continue re-investment projects
- New maintenance contract

FY21 and Beyond

- Refine and implement strategic/work plan
- Continue re-investment projects
- Celebrate successes

**Maintenance and Stormwater Management Division
Transportation Branch
Updated 08/19/2019**

Total Number of Positions: 8
 Vacancies Merit (C):1
 Vacancies Limited Term 1560 (E):0
 Vacancies Limited Term 900 (G): 0
 Updated 08/19/2019



- FY20 Program Funding
 - \$950k budget
 - Includes routine and non-routine maintenance
 - Funds Program and Project Manager
- Sinking Fund
 - Available: \$1.18MM
 - Estimated Spending FY20: \$1.11MM



Routine Maintenance Schedule

Operation	Jan.	Feb.	Mar.	Apr.	May	Jun.	Jul.	Aug.	Sept.	Oct.	Nov.	Dec.
Pre Emergent Weed Control												
Fertilizer												
Spring Clean Up												
Bed Edging & Mulch Installation												
Summer Flowers												
Herbicide												
Mowing												
Fall Flowers												
Pruning												
Leaf Removal												
Bi-Monthly Sidewalk Sweeping												
Street Light Inspections												

Street Light Inspections

- CRD-Wide Street Light Inspections
 - Over 1,500 street lights inspected monthly
 - Completed by DPWES-MSMD staff
 - Coordination with Capital Facilities

FY19 Street Light Data													
Percent of Street Lights Reported Out													
CRD	Jul	Aug	Sep	Oct	Nov	Dec	Jan	Feb	Mar	Apr	May	Jun	Total
Annandale	2.1%	2.6%	1.6%	1.0%	2.1%	3.6%	0.5%	-	1.0%	5.2%	0.0%	0.5%	1.8%
Bailey's	4.0%	1.7%	2.1%	0.8%	0.6%	1.3%	2.6%	-	0.9%	1.9%	1.3%	1.7%	1.7%
McLean	1.7%	0.6%	0.0%	0.6%	0.6%	1.1%	0.0%	-	0.6%	0.5%	0.0%	0.0%	0.5%
Richmond Highway	1.0%	2.8%	1.3%	4.4%	0.0%	2.6%	1.8%	-	0.0%	2.1%	0.8%	0.3%	1.6%
Springfield	2.2%	3.2%	2.9%	3.6%	5.4%	1.8%	4.3%	-	1.1%	2.2%	0.0%	2.2%	2.6%
Total	2.4%	2.2%	1.7%	2.2%	1.5%	2.0%	2.2%	-	0.7%	2.2%	0.6%	1.1%	1.7%

- **Sidewalk sweeping**

- Public sidewalks sweeping in each CRD
- Five occurrences in FY19
 - Approximately 65 tons of debris removed
- New contract established for FY20
 - Bi-monthly (six occurrences)
 - July through June

- **Street Sweeping**

- Solid Waste partnership
 - Annandale pilot
 - 10 tons of debris collected
- Montgomery County contract rider
 - First cycle September 2019



CRD Asset Inventory and Condition Assessment

- Completed August 2018
- Comprehensive inventory of CRD right-of-way features
- 28,000+ features inventoried
 - Includes all CRDs



- Annandale and Bailey's CRD
 - 1,700 SF repaired
 - New edge restraints along 2,000 LF of pavers



Trip Hazard Remediation

- Precision Safe Sidewalks
- Concrete trip hazards between 0.5-2"
- 5,997 – number of hazards to be removed
- 1,347 – linear feet of curb to be repaired
- 147,877 – square feet repaired to date

CRD	STATUS (Surveyed; Repairs Underway; Repaired; D&R Underway)	# REPAIRS COMPLETED	Sq Ft Repaired	LINEAR FEET OF CURB REPAIRS
MCLEAN	Repaired	1113	30,549	234
SEVEN CORNERS	Repaired	759	19,250	102
ANNANDALE	Repaired	558	15,277	361
ROUTE 1 CORRIDOR	Repaired	1331	33,628	143
SPRINGFIELD	Repaired	1329	31,146	55
BAILEY'S CROSSROADS	Repairs Underway	841	18,027	109.5



Bailey's Sidewalk Improvement

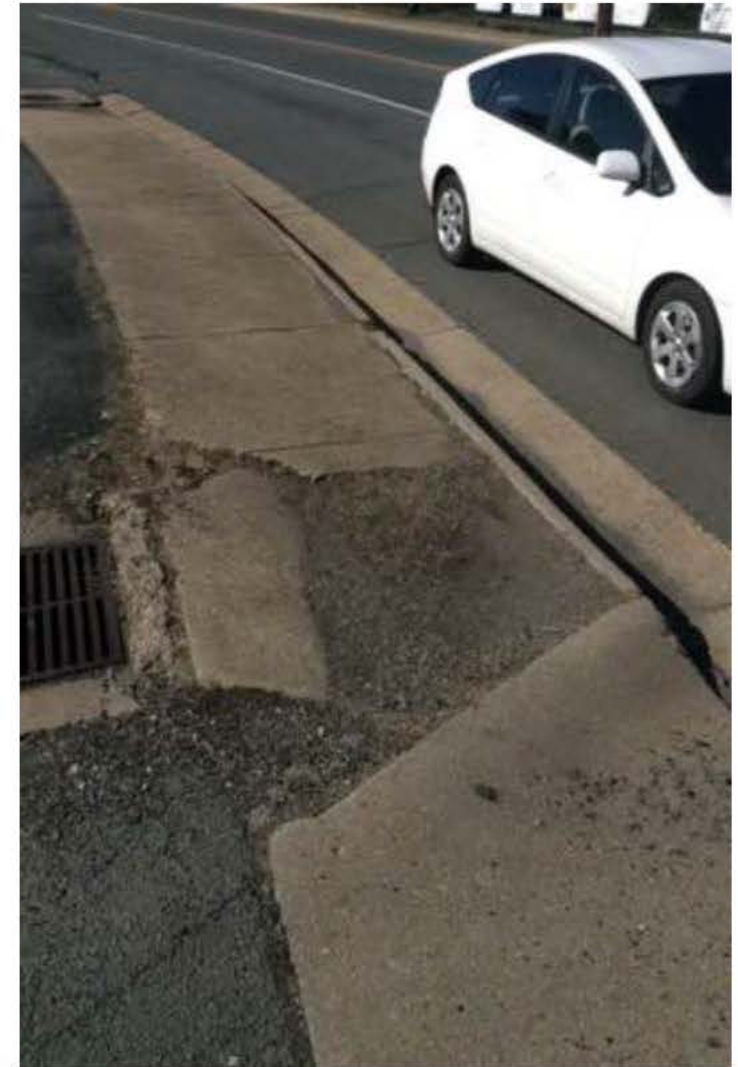
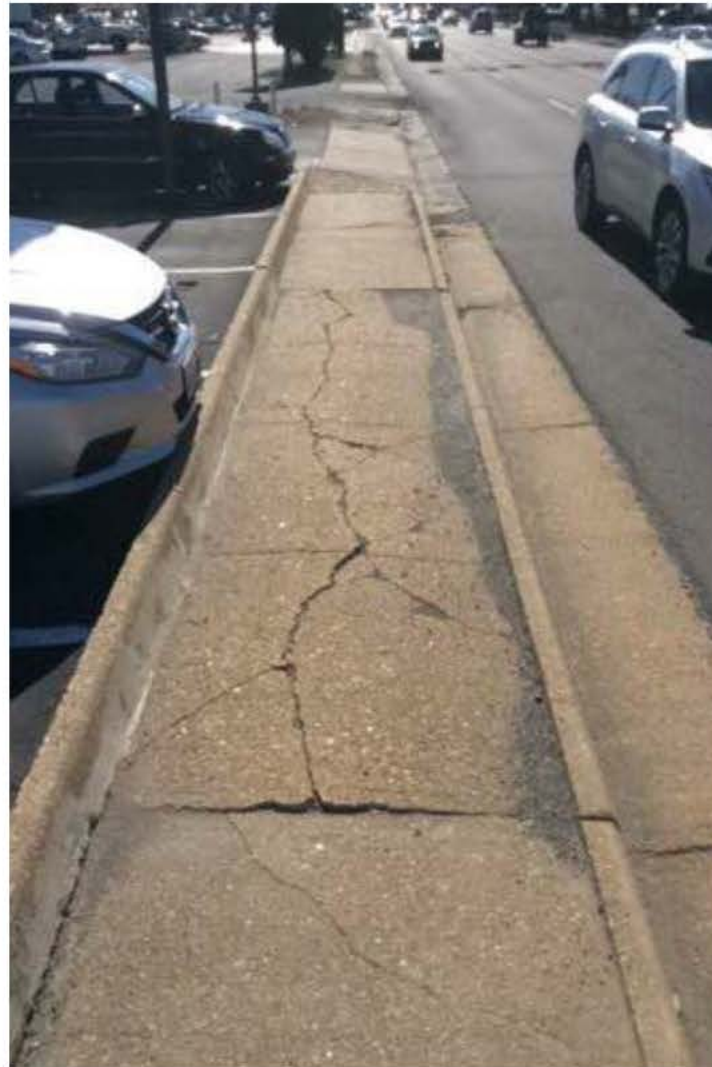
- Redirect pedestrian and bicycle traffic
 - 48 LF – handrail installed
- Re-establish grass on slope
- 150 LF – sidewalk replaced
- 2 – ADA ramps replaced
- 400 LF – handrail painted
- 50 – handrail posts repaired



Bland Street Tree Box Repair



Sidewalk Replacement/Repairs



Bus Shelter Replacement



McLean Bench Replacement



Route 50 Pedestrian Bridge



CRD Paver Restoration



• Challenges

- Funding
 - Maintenance fund
 - Sinking fund
- Expiring Maintenance Contract
 - Inflated costs
 - Contract rates from 2012
 - Learning curve
- Contractor Reliability
- Asset Management

Additional Information

For additional information, please contact

PJ Tierno, Program Manager

703-324-1691

ptiern@fairfaxcounty.gov

www.fairfaxcounty.gov/publicworks