

Juvenile and Domestic Relations District Court

Mission

The mission of the Fairfax County Juvenile and Domestic Relations District Court Services Unit is to provide efficient, effective, and equitable probation and residential services. The agency promotes positive behavioral change and reduction of illegal conduct for those children and adults who come within the Court's authority. The agency strives to do this within a framework of accountability, consistent with the well-being of the client, his/her family, and the protection of the community (including victims).

Connection to the Countywide Strategic Plan

The Fairfax County Board of Supervisors adopted the first-ever Countywide Strategic Plan on October 5, 2021. The Countywide Strategic Plan serves as a road map to help guide future work, focusing on the 10 Community Outcome Areas that represent the issues of greatest importance to the community. In February of 2023, the first Annual Report on the work of the strategic plan was released to the public. The report contains point-in-time progress highlights for each of the proposed plan strategies, plus a sample data dashboard and data story that is being replicated across all of the outcome areas, and a number of additional initiatives to embed the elements of the plan within department-level work. The report also includes a Year Two Implementation Model, which focuses on identifying the specific strategies that will move forward to implementation under the guidance of the Board of Supervisors. For more information on the Countywide Strategic Plan, please visit www.fairfaxcounty.gov/strategicplan. The Juvenile and Domestic Relations District Court primarily supports the following Community Outcome Areas:



Community Outcome Area	Vision Statement
Empowerment and Support for Residents Facing Vulnerability	<i>All people facing vulnerability are empowered and supported to live independent lives to their fullest potential.</i>
Safety and Security	<i>All people feel safe at home, school, work and in the community.</i>

Focus

The Fairfax County Juvenile and Domestic Relations District Court (JDRDC) adjudicates juvenile matters, offenses committed by adults against juveniles, and family matters except divorce. The Court Services Unit (CSU) of JDRDC offers comprehensive probation and residential services for youth, services to adults experiencing domestic and/or family difficulties, and adult probation services to residents of Fairfax County, the City of Fairfax, and the Towns of Herndon, Vienna, and Clifton. JDRDC is funded primarily from the County General Fund. Additional sources of funds include the Virginia Department of Juvenile Justice (DJJ), local court collections, and federal and state grants.

Evidence-Based Practice

Over the past decade, the juvenile and criminal justice fields have developed a body of evidence-based approaches to intervention with youth and adults involved in illegal behavior. JDRDC works to incorporate many of these practices (e.g., risk assessment tools, structured decision-making) into

Juvenile and Domestic Relations District Court

intake, probation case management, and residential programs. These strategies increase consistency and validity of case management decisions, improve system efficiency, and enhance public safety. JDRDC also works to shift the philosophy of probation services from monitoring to one of service delivery focusing on behavior change. This shift includes extensive and continuous staff training and implementation of tools such as motivational interviewing, use of assessments, implementing evidence-based interventions, effective practices in community supervision (EPICS), and cognitive processes focusing on factors specific to an individual's offending resulting in behavior change and potentially reducing recidivism in the future.

Family Engagement

Support for individuals, youth, and families before, during, and after their involvement with the juvenile justice system is important for continued success within the community. Agency efforts regarding family engagement include identifying and developing strategies staff can use to engage and involve families at all levels within the juvenile justice system. Currently, JDRDC is investigating the use of family engagement strategies with Domestic Relations and Community Corrections cases as many clients are before the court due to family issues and concerns. JDRDC continues to train employees throughout the agency.

Trauma-Informed Programming

JDRDC continues to work towards becoming a trauma-informed and trauma-responsive agency. Collaboration between JDRDC and the Fairfax-Falls Church Community Services Board (CSB) provides a team of professionals to address individual trauma treatment needs of youth providing consultation, assistance with symptom screening, clinical diagnostic assessment, and referral to trauma-specific treatment providers. JDRDC participates in on-going staff training and completes a bi-annual organizational assessment to identify gaps in services for youth and gain a better understanding of how staff view the trauma-informed process. JDRDC utilizes a trauma screening instrument for youth that identifies both trauma experiences and possible symptoms, allowing staff and the trauma team to target specific behaviors that may need specialized treatment.

Racial and Ethnic Disparities

JDRDC focuses efforts on reducing racial and ethnic disparities through continual review of policies and procedures throughout the juvenile justice process. Through the Equity Plan and in partnership with One Fairfax, JDRDC's internal workgroup continues to identify annual goals for improvement and provide support to staff and agency leaders. During FY 2022, JDRDC worked on improving partnerships crucial to meeting the needs of clients and accessing data to continue to track areas of concern. In addition, JDRDC works with other Fairfax County Health and Human Service Agencies, Fairfax County Public Schools (FCPS), and the Fairfax County Police Department (FCPD) to identify ways to improve equity and promote One Fairfax across the system.

Youth Gang Intervention and Prevention

JDRDC is the lead agency in the County's youth gang prevention and intervention activities. The Gang Prevention and Intervention Coordinator works closely with law enforcement and FCPS in providing gang prevention and awareness presentations to include human trafficking education.

Partnerships

Education Services: Court-involved youth frequently experience trouble in traditional educational settings. JDRDC and FCPS collaborate in operating or supporting a variety of alternative schools for youth who are unable to benefit from the ordinary public-school experience.

Mental Health and Substance Abuse Services: Youth on probation and in residential facilities frequently have significant mental health and substance abuse issues. JDRDC partners with the CSB to provide several on-site assessment and treatment services including emergency evaluations,

Juvenile and Domestic Relations District Court

dispositional or diagnostic evaluations, special request evaluations, case consultations, and juvenile competency evaluations. In addition, mental health and trauma screening is provided by JDRDC staff for youth entering diversion programming, probation services, and all residential facilities. Crisis intervention services are also provided to youth in the general population at the Juvenile Detention Center (JDC) and Shelter Care facilities.

Domestic Violence Partnerships: Fairfax County's Domestic and Sexual Violence Services (DSVS) provides culturally responsive information and support services for victims and families of intimate partner violence and stalking and promotes offender accountability through specialized prosecution and supervision. JDRDC also collaborates with the Domestic Violence Coordinating Council to provide a Domestic Violence Victim Advocacy Program.

Diversions

JDRDC expanded diversion opportunities for both adults and juveniles while still holding them accountable for their actions. JDRDC partnered with FCPS, FCPD, and Northern Virginia Mediation Services and implemented the Alternative Accountability Program (AAP). In addition, JDRDC's redesigned juvenile intake process increased opportunities for diversion and ensured that youths' risks and needs are accurately identified and addressed while ensuring public safety.

For adults, the Pre-Trial Supervision Program (PSP) allows offenders to remain in the community under supervision while awaiting trial. The program provides support services, screening, and investigative information to judicial officers to assist in determining risk to public safety. These services run parallel with Fairfax County's Diversion First initiative which offers alternatives to incarceration for individuals in contact with the criminal justice system for low level offenses and suffering from mental illness or developmental disabilities. The goal is to offer assessment, treatment, and needed support while maintaining public safety. Without pre-trial services, many offenders spend significant amounts of time in jail before trial and/or sentencing.

Residential Facilities

JDRDC operates four residential facilities housing five programs that provide a safe, stable, and structured environment for youth awaiting court processing or receiving treatment services. The JDC serves pre-dispositional and post-dispositional youth with serious criminal charges that require a secure placement. Shelter Care serves youth with less serious charges, but still require an out-of-home placement. Both facilities provide counseling stabilization, mental health services, medical services, and on-site schools.

In addition, JDRDC operates three treatment programs for post-dispositional youth providing intensive individual, group, and family counseling services as well as educational programming. Stepping Stones, located at the JDC, is a 12-bed group home serving adolescent males. The Foundations Program is a 12-bed facility serving adolescent females with long-term treatment needs and their families. The Beta Program, located at the JDC, is a post-dispositional 11-bed sentencing/treatment program for court-involved youth (primarily male) requiring incarceration and treatment services. Beta is a 12-month program with six months of confinement and six months of community supervision.

Community-Based Services

In response to the high needs of youth who are at risk to reoffend and at risk to be removed from their homes and communities, JDRDC implemented the Community Based Services (CBS) Program. Based on assessment outcomes, CBS provides in-depth home-based services to qualifying youth and families. Youth and families receive services for up to six months with a maximum of 10 direct service hours a week.

Mediation

The Mediation program is available to all qualified individuals filing custody, support, and visitation complaints with JDRDC. The program incorporates the resources provided within the County and the power of the court. If eligible, domestic relations clients participate in mediation prior to court hearings reducing court wait times and increasing the number of clients reaching agreement without judicial interference. JDRDC manages the overall mediation process including assigning cases to mediators, supervising internal and staff roster mediators, directing the flow of cases, resolving issues regarding the cases and their assignments, reviewing all court orders for compliance, and serving as a liaison to the court. This expanded mediation program also helps reduce the stress and trauma on the children in the family while promoting a family resolution and encouraging a collaborative approach to these critical family issues.

Language Access Program

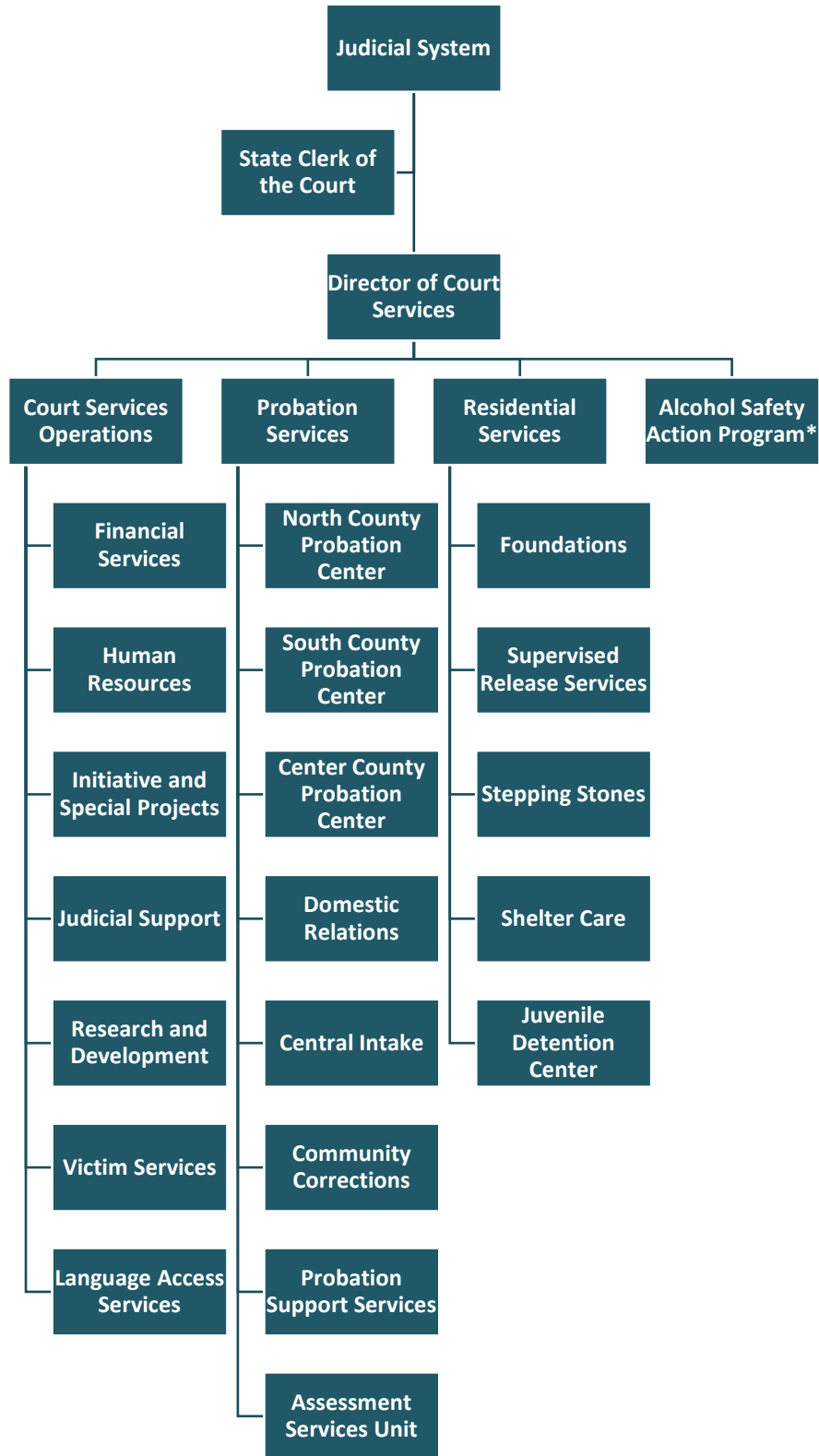
The continued growth of language and cultural diversity in the County presents an ongoing service challenge to staff and clients. The agency has addressed spoken and written translation needs with its Language Access Program and the use of paid interpretation and translation services. Language Access supervises 14 volunteer interpreters providing 1,496 hours of interpretation services for FY 2022. The agency also has 35 staff participating in the County's Language Stipend Program. The Language Access Program also introduced video remote interpretation services for clients who are unable to have in-person interpretation services provided.

Supervised Visitation and Exchange Program

The Supervised Visitation and Exchange (SVE) program provides safe and supportive visitation and exchange services for families' court-ordered into the program. SVE allows families dealing with critical issues such as domestic violence, high conflict, mental health concerns, and others, the opportunity to build healthier relationships. The program encourages opportunities that strengthen the parent-child bond while avoiding unnecessary stress, complicated adult conflicts, and safety issues.

Juvenile and Domestic Relations District Court

Organizational Chart



*All staffing and operating support for ASAP is found in Fund 83000, Alcohol Safety Action Program, in Volume 2.

Juvenile and Domestic Relations District Court

Budget and Staff Resources

Category	FY 2022 Actual	FY 2023 Adopted	FY 2023 Revised	FY 2024 Advertised	FY 2024 Adopted
FUNDING					
Expenditures:					
Personnel Services	\$20,323,728	\$24,062,450	\$23,663,450	\$25,060,864	\$25,774,006
Operating Expenses	3,131,204	3,531,456	4,009,537	3,599,289	3,600,604
Capital Equipment	16,394	0	18,194	0	0
Recovered Costs	114,000	0	0	0	0
Total Expenditures	\$23,585,326	\$27,593,906	\$27,691,181	\$28,660,153	\$29,374,610
Income:					
Fines and Penalties	\$76,320	\$55,330	\$20,347	\$20,347	\$20,347
User Fees (Parental Support)	8,249	19,549	9,732	9,732	9,732
State Share Court Services	2,800,393	2,027,869	2,800,393	2,800,393	2,800,393
State Share Residential Services	3,046,363	2,913,371	3,054,863	3,054,863	3,054,863
Fairfax City Contract	510,081	646,912	608,329	599,117	599,117
USDA Revenue	72,251	99,500	99,500	99,500	99,500
Total Income	\$6,513,657	\$5,762,531	\$6,593,164	\$6,583,952	\$6,583,952
NET COST TO THE COUNTY	\$17,071,669	\$21,831,375	\$21,098,017	\$22,076,201	\$22,790,658
AUTHORIZED POSITIONS/FULL-TIME EQUIVALENT (FTE)					
Regular	305 / 304	306 / 304.5	306 / 304.5	306 / 304.5	306 / 304.5
State	47 / 47	47 / 47	50 / 49.6	50 / 49.6	50 / 49.6

FY 2024 Funding Adjustments

The following funding adjustments from the FY 2023 Adopted Budget Plan are necessary to support the FY 2024 program. Included are all adjustments recommended by the County Executive that were approved by the Board of Supervisors, as well as any additional Board of Supervisors' actions, as approved in the adoption of the Budget on May 9, 2023.

Employee Compensation \$1,734,278

An increase of \$1,734,278 in Personnel Services includes \$1,286,392 for a 5.44 percent market rate adjustment (MRA) for all employees and \$447,886 for performance-based and longevity increases for non-uniformed merit employees, both effective July 2023.

Department of Vehicle Services Charges \$2,898

An increase of \$2,898 in Department of Vehicle Services Charges is based on anticipated billings for maintenance and operating-related charges.

Salary Supplement for State Clerks \$77,589

An increase of \$77,589 is included for salary supplements for state employees. This amount will fully fund the increased cost of the 15 percent subsidy that is provided by the County based on the state providing a 5 percent salary increase in FY 2023.

Contract Rate Increases \$66,250

An increase of \$66,250 is included to fully fund rate increases for the Northern Virginia Family Services and Legal Services of Northern Virginia contracts.

Juvenile and Domestic Relations District Court

Targeted Vacancy Savings (\$100,311)

A decrease of \$100,311 is included to recognize targeted vacancy savings. Although the County has taken actions to reduce the vacancy rate, it is anticipated that vacancies will remain high for the foreseeable future, generating flexibility in agency budgets.

Changes to FY 2023 Adopted Budget Plan

The following funding adjustments reflect all approved changes in the FY 2023 Revised Budget Plan since passage of the FY 2023 Adopted Budget Plan. Included are all adjustments made as part of the FY 2022 Carryover Review, FY 2023 Third Quarter Review, and all other approved changes through April 30, 2023.

Carryover Adjustments \$97,275

As part of the FY 2022 Carryover Review, the Board of Supervisors approved encumbered funding of \$97,275, including \$79,081 in Operating Expenses and \$18,194 in Capital Equipment.

Cost Centers

Juvenile and Domestic Relations District Court Services has three cost centers: Court Services Administration, Probation Services, and Residential Services.

Court Services Administration

The Court Services Administration cost center is responsible for the overall administrative management of the Juvenile Court's services. Staff in this cost center provide information technology support, research/evaluation, training, quality improvement monitoring, financial services, human resources administration, and court facilities management. Additional responsibilities include Victim Services, Restitution Services, Volunteer Services, and the Language Access Program.

Category	FY 2022 Actual	FY 2023 Adopted	FY 2023 Revised	FY 2024 Advertised	FY 2024 Adopted
EXPENDITURES					
Total Expenditures	\$3,893,174	\$3,790,690	\$4,403,238	\$3,999,561	\$4,083,890
AUTHORIZED POSITIONS/FULL-TIME EQUIVALENT (FTE)					
Regular	35 / 35	35 / 35	38 / 38	36 / 36	38 / 38
State	47 / 47	47 / 47	50 / 49.6	50 / 49.6	50 / 49.6

Probation Services

The Probation Services cost center includes three decentralized juvenile probation units located in North and South County. Additionally, the Central Intake Services Unit, the Community Corrections Unit, the Domestic Relations Services Unit, and the Assessment Unit provide probation services not specifically tied to County geography. These units are responsible for processing all juvenile and adult-related complaints, operating a 24-hour intake program to review detention requests before confinement of all juveniles, and supervising juveniles and adults placed on probation by the Court.

Category	FY 2022 Actual	FY 2023 Adopted	FY 2023 Revised	FY 2024 Advertised	FY 2024 Adopted
EXPENDITURES					
Total Expenditures	\$7,282,108	\$9,742,966	\$9,270,040	\$10,069,223	\$10,284,337
AUTHORIZED POSITIONS/FULL-TIME EQUIVALENT (FTE)					
Regular	115 / 114	116 / 114.5	111 / 109.5	111 / 109.5	111 / 109.5

Juvenile and Domestic Relations District Court

Residential Services

The Residential Services cost center operates and maintains four residential programs for court-involved youth including the 121-bed Juvenile Detention Center and three treatment programs for post-dispositional youth providing intensive individual, group, and family counseling services as well as educational programming. Stepping Stones is a 12-bed group home, serving adolescent males with long-term treatment needs and their families; Foundations is a 12-bed facility, serving adolescent females with long-term treatment needs and their families; and the Beta Program (located at JDC) is a post-dispositional 11-bed sentencing/treatment program for court-involved youth (primarily male) requiring incarceration and treatment services. Shelter Care and Supervised Release Services, which includes outreach detention, electronic monitoring, and the Intensive Supervision Program, are also operated out of this cost center.

Category	FY 2022 Actual	FY 2023 Adopted	FY 2023 Revised	FY 2024 Advertised	FY 2024 Adopted
EXPENDITURES					
Total Expenditures	\$12,410,044	\$14,060,250	\$14,017,903	\$14,591,369	\$15,006,383
AUTHORIZED POSITIONS/FULL-TIME EQUIVALENT (FTE)					
Regular	155 / 155	155 / 155	157 / 157	159 / 159	157 / 157

Position Detail

The FY 2024 Adopted Budget Plan includes the following positions:

COURT SERVICES ADMINISTRATION – 88 Positions					
Judicial					
1	Chief District Court Judge S		7	District Court Judges S	
State Clerk of the Court					
1	Clerk of the Court S		35	State Clerks S, 1 PT	
6	Supervising State Clerks S				
Director of Court Services					
1	Director of Court Services				
Court Services Operations					
1	Asst. Dir. Of Court Services		1	Administrative Assistant V	
2	Division Directors of Court Services				
Financial Services					
1	Financial Specialist III		1	Administrative Assistant IV	
2	Financial Specialists I		1	Administrative Assistant III	
Human Resources					
1	Human Resources Generalist III		2	Administrative Assistants IV	
1	Training Specialist III		1	Volunteer Services Manager	
1	Human Resources Generalist I				
Initiatives and Special Projects					
2	Probation Supervisors II		1	Management Analyst III	
1	Probation Counselor III		1	Management Analyst I	
1	Internet/Intranet Architect II				
Judicial Support					
1	Administrative Assistant IV		2	Administrative Assistants II	
1	Administrative Assistant III				
Research and Development					
1	Management Analyst IV		1	Management Analyst II	
1	Management Analyst III		1	Management Analyst I	
Victim Services					
1	Probation Supervisor I		4	Probation Counselors II	

Juvenile and Domestic Relations District Court

Volunteer and Interpreter Services			
1	Management Analyst II	1	Administrative Assistant III
1	Volunteer Services Coordinator II		
PROBATION SERVICES – 111 Positions			
Probation Services			
1	Asst. Director of Court Services	2	Probation Counselors III
1	Division Director of Court Services	2	Probation Counselors II
1	Probation Supervisor II	1	Administrative Assistant II
North County Services			
1	Probation Counselor III	1	Administrative Assistant III
8	Probation Counselors II	1	Administrative Assistant II
South County Services			
1	Probation Supervisor II	1	Administrative Assistant III
1	Probation Counselor III	1	Administrative Assistant II
8	Probation Counselors II		
Center County Services			
2	Probation Counselors II	1	Administrative Assistant II
Community Corrections Services			
1	Probation Supervisor II	3	Probation Counselors I
1	Probation Supervisor I	1	Administrative Assistant III
13	Probation Counselors II	1	Administrative Assistant II
Central Intake Services			
1	Probation Supervisor II	1	Administrative Assistant IV
1	Probation Supervisor I	1	Administrative Assistant III
1	Probation Counselor III	2	Administrative Assistants II, 1 PT
9	Probation Counselors II		
Assessment Services			
2	Probation Supervisors II	1	Probation Counselor I
1	Probation Counselor III	1	Administrative Assistant III
6	Probation Counselors II	1	Administrative Assistant II
Domestic Relations			
1	Probation Supervisor II	2	Probation Counselors I, 1 PT
3	Probation Supervisors I	1	Administrative Assistant IV
2	Probation Counselors III	3	Administrative Assistants III
13	Probation Counselors II	4	Administrative Assistants II
RESIDENTIAL SERVICES – 157 Positions			
Residential Services			
1	Asst. Director of Court Services	1	Probation Counselor II
1	Probation Counselor III		
Foundations			
1	Probation Supervisor II	4	Probation Counselors I
1	Probation Supervisor I	1	Administrative Assistant III
1	Probation Counselor III	1	Food Service Specialist
8	Probation Counselors II		
Supervised Release Services			
1	Probation Supervisor II	11	Probation Counselors I
1	Probation Supervisor I	1	Administrative Assistant III
1	Probation Counselor II	1	Administrative Assistant II
Stepping Stones			
1	Probation Supervisor II	6	Probation Counselors I
1	Probation Supervisor I	1	Administrative Assistant III
1	Probation Counselor III	1	Food Service Specialist
8	Probation Counselors II		
Shelter Care			
1	Probation Supervisor II	9	Probation Counselors I
1	Probation Supervisor I	1	Administrative Assistant III
2	Probation Counselors II		

Juvenile Detention Center			
1	JDC Administrator	1	Administrative Assistant IV
3	Probation Supervisors II	1	Administrative Assistant III
5	Probation Supervisors I	1	Food Service Supervisor
8	Probation Counselors III	1	Gen. Building Maint. Worker II
17	Probation Counselors II	1	Gen. Building Maint. Worker I
41	Probation Counselors I	1	Maintenance Trade Helper I
1	Public Health Nurse II	1	Food Service Specialist
1	Licensed Practical Nurse	4	Cooks
S	Denotes State Position(s)		
PT	Denotes Part-time Position(s)		

Performance Measurement Results by Community Outcome Area

Empowerment and Support for Residents Facing Vulnerability

The Court Services Administration cost center outcome performance measures quantify the extent and value of volunteer programs supporting court services. The JDRDC has two programs monitoring volunteers. The Volunteer and Intern Program provides volunteers and interns for all areas of the JDRDC upon request. In addition, the Volunteer Interpreter Program provides much needed interpretation and translation services to JDRDC. In FY 2022, these two programs had 79 volunteers who provided 12,254 hours of services to JDRDC programs at a value of \$357,083.

Probation Services encompasses two major types of activities: (1) intake, the processing of juvenile and adult complaints brought into the JDRDC system and (2) supervision services, the assessment, counseling, and supervision of youth and adults who have been placed on probation. Intake offices processed 6,775 non-traffic complaints in FY 2022, a small increase from FY 2021. In FY 2022, the agency diverted 13 percent of youth from formal court processing. These cases are either provided services at the intake level or are referred to other, more appropriate service providers.

In FY 2022:

- Shelter Care operated at 46 percent of capacity at a cost of \$354 per bed day. Ninety-three percent of the parents responding to customer satisfaction surveys were satisfied with the shelter care services. Eighty-five percent of the youth placed in the shelter during the year appeared at their scheduled court hearing.
- The Juvenile Detention Center operated at 29 percent of staffed capacity at a cost of \$212 per bed day. Nine percent of the placements in FY 2022 resulted in the need to use physical restraint on a youth. This was a decrease from FY 2021. One hundred percent of the youth held in detention appeared at their scheduled court hearing, exceeding the performance target of 98 percent.

Safety and Security

In FY 2022, the average monthly juvenile probation officer caseload was 10; the average monthly adult probation officer caseload was 69. Juvenile probation caseloads decreased while adult probation caseloads increased from FY 2021 caseload sizes. One hundred percent of court-ordered investigations for juveniles were submitted at least 72 hours prior to the court date in FY 2022. One hundred percent of parents responding to the customer satisfaction survey indicated that they were satisfied with the probation services their child received. In FY 2022, juveniles on probation with no new criminal convictions within 12 months of case was 87 percent.

Juvenile and Domestic Relations District Court

Residential Services includes four major service areas: Supervised Release Services (SRS) which includes outreach detention, electronic monitoring, and intensive supervision; the Shelter Care (SC) provides shelter care and crisis intervention for court-involved youth; Secure Detention Services (SDS) which includes the Juvenile Detention Center; and Community-Based Residential Services (CBRS) which includes both the Foundations Program and Stepping Stones.

In FY 2022:

- SRS operated at 97 percent of its capacity at a cost of \$174 per day. One hundred percent of youth had face-to-face contact with SRS staff within 24 hours of assignment to the service. Eighty percent of the youth in the program remained free of new criminal or Child In Need of Supervision or Services (CHINS) petitions while under SRS supervision.
- Community-Based Residential Services programs operated at 38 percent of capacity at a cost of \$430 per bed day. In FY 2022, juveniles discharged from CBRS with no new delinquent petitions for one year was 81 percent.

Community Outcome Area	FY 2020 Actual	FY 2021 Actual	FY 2022 Estimate	FY 2022 Actual	FY 2023 Estimate	FY 2024 Estimate
Empowerment and Support for Residents Facing Vulnerability						
Services Are High Quality and Coordinated						
Percent of Secure Detention Services (SDS) youth who appear at scheduled court hearing	100%	100%	98%	100%	98%	98%
Percent of Shelter Care (SC) youth who appear at scheduled court hearing	94%	88%	90%	85%	90%	90%
Percent of youth diverted from formal court processing	17%	10%	15%	13%	15%	15%
Value of services added	\$466,459	\$266,208	\$475,000	\$357,083	\$400,000	\$400,000
Safety and Security						
Following Rules and Regulations						
Percent of Community-Based Residential Services (CBRS) discharged youth with no new delinquent petitions for 1 year	59%	85%	65%	81%	65%	65%
Percent of juveniles with no new criminal convictions within 12 months of case closing	69%	69%	65%	87%	65%	65%
Percent of Supervised Release Services (SRS) youth with no new delinquency or Child In Need of Supervision or Services (CHINS) petitions while under supervision	87%	78%	85%	80%	85%	85%

A complete list of performance measures can be viewed at <https://www.fairfaxcounty.gov/budget/fy-2024-adopted-performance-measures-pm>