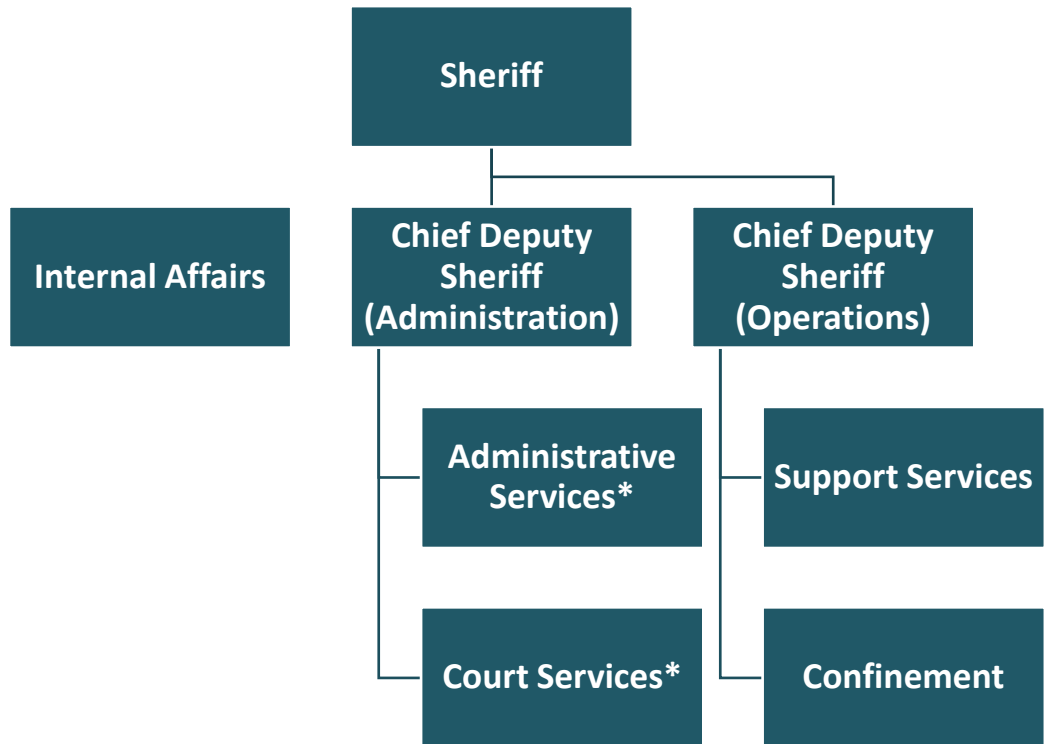


# Office of the Sheriff

## Organizational Chart



\*Judicial Administration Program Area of the Office of the Sheriff

Information on the entire Office of the Sheriff, including the Judicial Administration Program Area, can be found in the Public Safety section of Volume 1.

## Budget and Staff Resources

### Judicial Administration Program Area Summary

Category	FY 2022 Actual	FY 2023 Adopted	FY 2023 Revised	FY 2024 Advertised	FY 2024 Adopted
<b>FUNDING</b>					
<b>Expenditures:</b>					
Personnel Services	\$17,344,381	\$17,914,542	\$17,914,542	\$18,737,386	\$19,352,207
Operating Expenses	4,359,250	4,057,696	6,101,060	4,224,188	4,237,870
Capital Equipment	632,615	0	38,486	0	0
<b>Total Expenditures</b>	<b>\$22,336,246</b>	<b>\$21,972,238</b>	<b>\$24,054,088</b>	<b>\$22,961,574</b>	<b>\$23,590,077</b>
<b>Total Income</b>	<b>\$4,068,181</b>	<b>\$3,824,180</b>	<b>\$4,029,284</b>	<b>\$4,315,763</b>	<b>\$4,315,763</b>
<b>NET COST TO THE COUNTY</b>	<b>\$18,268,065</b>	<b>\$18,148,058</b>	<b>\$20,024,804</b>	<b>\$18,645,811</b>	<b>\$19,274,314</b>
<b>AUTHORIZED POSITIONS/FULL-TIME EQUIVALENT (FTE)</b>					
Regular	165 / 164.5	165 / 164.5	166 / 165.5	165 / 164.5	166 / 165.5
Exempt	4 / 4	4 / 4	4 / 4	4 / 4	4 / 4
State	2 / 2	2 / 2	2 / 2	2 / 2	2 / 2