

# Juvenile and Domestic Relations District Court

## Mission

The mission of the Fairfax County Juvenile and Domestic Relations District Court Services Unit is to provide efficient, effective, and equitable intake, probation, and residential services. The agency promotes positive behavioral change and reduction of illegal conduct for those children and adults who come within the Court's authority. The agency strives to do this within a framework of accountability, consistent with the well-being of the client, his/her family, and the protection of the community (including victims).

## Connection to the Countywide Strategic Plan

The Fairfax County Board of Supervisors adopted the first-ever Countywide Strategic Plan on October 5, 2021. The Countywide Strategic Plan serves as a road map to help guide future work, focusing on the 10 Community Outcome Areas that represent the issues of greatest importance to the community, and uses our One Fairfax equity policy to invest in people and places that have limited access to opportunity. On February 20, 2024, the second Annual Report on the work of the strategic plan was released to the public. The report contains point-in-time progress highlights for each of the community outcome areas, plus three data dashboards and data stories that are being replicated across all of the outcome areas, and a number of additional initiatives to embed the elements of the plan within department-level work. The report also includes a Year Three Implementation Model, which will engage hundreds of County subject-matter experts to identify and champion the specific strategies that will move forward to implementation under the guidance of the Board of Supervisors. For more information on the Countywide Strategic Plan, please visit [www.fairfaxcounty.gov/strategicplan](http://www.fairfaxcounty.gov/strategicplan). The Fairfax County Juvenile and Domestic Relations District Court primarily supports the following Community Outcome Areas:



Community Outcome Area	Vision Statement
<b>Empowerment and Support for Residents Facing Vulnerability</b>	<i>All people facing vulnerability are empowered and supported to live independent lives to their fullest potential.</i>
<b>Safety and Security</b>	<i>All people feel safe at home, school, work and in the community.</i>

## Focus

The Fairfax County Juvenile and Domestic Relations District Court (JDRDC) adjudicates juvenile matters, offenses committed by adults against juveniles, and all family matters except divorce. The Court Services Unit (CSU) of JDRDC offers comprehensive intake, probation and residential services for youth, services to adults experiencing domestic and/or family difficulties, and adult probation services to residents of Fairfax County, the City of Fairfax, and the Towns of Herndon, Vienna, and Clifton. JDRDC is funded primarily from the County General Fund. Additional sources of funds include the Virginia Department of Juvenile Justice (DJJ), local court collections, and federal and state grants.

## **Evidence-Based Practice**

Over the past decade, the juvenile and criminal justice fields have developed a body of evidence-based approaches to intervention with youth and adults involved in illegal behavior. JDRDC works to incorporate many of these practices (e.g., risk assessment tools, structured decision-making) into intake, probation case management, and residential programs. These strategies increase consistency and validity of case management decisions, improve system efficiency, and enhance public safety. JDRDC also works to shift the philosophy of probation services from monitoring to service delivery focusing on behavior change. This shift includes extensive and continuous staff training and implementation of tools such as motivational interviewing, use of assessments, implementing evidence-based interventions, effective practices in community supervision (EPICS), and cognitive processes focusing on factors specific to an individual's offense resulting in behavior change and potentially reducing recidivism in the future.

## **Family Engagement**

Support for individuals, youth, and families before, during, and after their involvement with the juvenile justice system is important for continued success within the community. Agency efforts regarding family engagement include identifying and developing strategies staff can use to engage and involve families at all levels within the juvenile justice system.

## **Trauma-Informed Programming**

JDRDC continues to carry out trauma informed and trauma-responsive practices. Collaboration between JDRDC, Neighborhood and Community Services, and the Fairfax-Falls Church Community Services Board (CSB) provides a team of professionals to address individual trauma treatment needs of youth providing consultation, assistance with symptom screening, clinical diagnostic assessment, and referral to trauma-specific treatment providers. JDRDC completes a bi-annual organizational assessment to identify gaps in services for youth and better understand staff's needs so that trauma-informed practices are carried out across the organization that also target vicarious trauma. JDRDC utilizes a trauma screening instrument for youth that identifies both trauma experiences and possible symptoms, allowing staff and the trauma team to target specific behaviors that may need specialized treatment.

## **Racial and Ethnic Disparities**

JDRDC focuses efforts on reducing racial and ethnic disparities through continual review of policies and procedures throughout the juvenile justice process. Through the JDRDC Equity Impact Plan and in partnership with One Fairfax, JDRDC's internal workgroup continues to identify annual goals for improvement and provide support to staff and agency leaders. During FY 2023, JDRDC's focus was on identifying gaps in service for the adult population served to ensure programming needs are met. In addition, JDRDC has implemented processes for policy review with an equity lens to mitigate disparities within the population. In an effort to promote more successful outcomes, JDRDC worked on identifying areas of need for clients navigating the court process, particularly for non-English speaking clients.

## **Youth Gang Intervention and Prevention**

JDRDC is the lead agency in the County's youth gang prevention and intervention activities. The Gang Prevention and Intervention Coordinator works closely with law enforcement and Fairfax County Public Schools (FCPS) in providing gang prevention and awareness presentations to include human trafficking education.

# Juvenile and Domestic Relations District Court

## **Partnerships**

*Education Services:* Court-involved youth frequently struggle in traditional educational settings. JDRDC and FCPS collaborate in operating or supporting a variety of alternative schools for youth who are unable to benefit from the traditional public-school experience.

*Mental Health and Substance Abuse Services:* Youth on probation and in residential facilities frequently have significant mental health and substance use issues. JDRDC partners with the CSB to provide several on-site assessment and treatment services including emergency evaluations, dispositional or diagnostic evaluations, special request evaluations, case consultations, and juvenile competency evaluations. In addition, mental health and trauma screening is provided by JDRDC staff for youth entering diversion programs, probation services, and all residential facilities. Crisis intervention services are also provided to youth in the general population at the Juvenile Detention Center (JDC) and Shelter Care facilities.

*Domestic Violence Partnerships:* The Department of Family Services, Domestic and Sexual Violence Services (DSVS) division provides culturally responsive information and support services for victims and families of intimate partner violence and stalking and promotes offender accountability through specialized prosecution and supervision. JDRDC also collaborates with the Domestic Violence Coordinating Council to provide a Domestic Violence Victim Advocacy Program.

## **Diversion**

JDRDC continues to provide diversion opportunities for both adults and juveniles while still holding them accountable for their actions. JDRDC, in partnership with FCPS, the Police Department, and Northern Virginia Mediation Services, provides an Alternative Accountability Program (AAP). In addition, JDRDC's juvenile intake process increases opportunities for diversion and ensures that youths risks and needs are accurately identified and addressed while ensuring public safety.

For adults, the Pre-Trial Supervision Program (PSP) allows offenders to remain in the community under supervision while awaiting trial. The program provides support services, screening, and investigative information to judicial officers to assist in determining risk to public safety. These services run parallel with Fairfax County's Diversion First initiative which offers alternatives to incarceration for individuals in contact with the criminal justice system for low level offenses and suffering from mental illness or developmental disabilities. The goal is to offer assessment, treatment, and needed support while maintaining public safety. Without pre-trial services, many offenders spend significant amounts of time in jail before trial and/or sentencing.

## **Residential Facilities**

JDRDC operates four residential facilities housing five programs that provide a safe, stable, and structured environment for youth awaiting court processing or receiving treatment services. The JDC serves pre-dispositional and post-dispositional youth with serious criminal charges that require a secure placement. Shelter Care serves youth with less serious charges, but still requires an out-of-home placement. Both facilities provide counseling stabilization, mental health services, medical services, and on-site schools.

In addition, JDRDC operates three treatment programs for post-dispositional youth providing intensive individual, group, and family counseling services as well as educational programming. Stepping Stones, located at the JDC, is a 12-bed group home serving adolescent males. The Foundations Program is a 12-bed facility serving adolescent females with long-term treatment needs and their families. The Beta Program, located at the JDC, is a post-dispositional 11-bed sentencing/treatment program for court-involved youth (primarily male) requiring incarceration and treatment services. Beta is a 12-month program with six months of confinement and six months of community supervision.

## **Community-Based Services**

In response to the high needs of youth who are at risk of reoffending and at risk of being removed from their homes and communities, JDRDC implemented the Community Based Services (CBS) Program. Based on assessment outcomes, CBS provides in-depth home-based services to qualifying youth and families. Youth and families receive services for up to six months with a maximum of 10 direct service hours a week.

## **Mediation**

The Mediation program is available to all qualified individuals filing custody, support, and visitation complaints with JDRDC. The program incorporates County resources and the power of the court. If eligible, domestic relations clients participate in mediation prior to court hearings thus reducing court wait times and increasing the number of clients reaching agreement without judicial interference. JDRDC manages the overall mediation process including assigning cases to mediators, supervising internal and staff roster mediators, directing the flow of cases, resolving issues regarding the cases and their assignments, reviewing all court orders for compliance, and serving as a liaison to the court. This expanded mediation program also helps reduce the stress and trauma on the children while promoting a family resolution and encouraging a collaborative approach to these critical family issues.

## **Language Access Program**

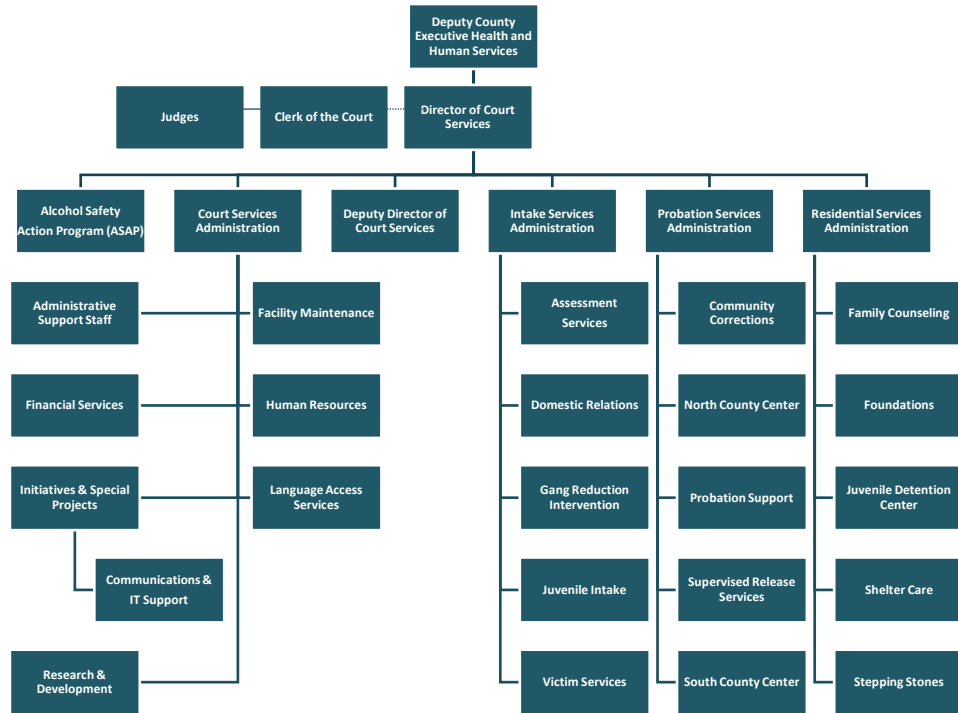
The continued growth of language and cultural diversity in the County presents an ongoing service challenge to staff and clients. The Language Access Program (LAP) offers the following services for Limited English Proficiency (LEP) community: phone, virtual, and onsite interpretation, written translation services, and language assessments for bilingual employees. In order to fulfill the language needs, LAP has contracts with various vendors, as well as 17 volunteer interpreters who provided a total of 1,866 hours of free services to the LEP community. The agency also has 35 staff participating in the County's Language Stipend Program.

## **Supervised Visitation and Exchange Program**

The Supervised Visitation and Exchange (SVE) program provides safe and supportive visitation and exchange services for families court-ordered into the program. SVE allows families dealing with critical issues such as domestic violence, high conflict, mental health concerns the opportunity to build healthier relationships. The program encourages opportunities that strengthen the parent-child bond while avoiding unnecessary stress, complicated adult conflicts, and safety issues.

# Juvenile and Domestic Relations District Court

## Organizational Chart



\*All staffing and operating support for ASAP is found in Fund 83000, Alcohol Safety Action Program, in Volume 2.

## Budget and Staff Resources

Category	FY 2023 Actual	FY 2024 Adopted	FY 2024 Revised	FY 2025 Advertised
<b>FUNDING</b>				
<b>Expenditures:</b>				
Personnel Services	\$20,259,010	\$25,774,006	\$24,974,006	\$27,218,787
Operating Expenses	3,630,059	3,600,604	4,500,890	3,681,143
Capital Equipment	18,194	0	150,000	0
Recovered Costs	114,000	0	0	0
<b>Total Expenditures</b>	<b>\$24,021,263</b>	<b>\$29,374,610</b>	<b>\$29,624,896</b>	<b>\$30,899,930</b>
<b>Income:</b>				
Fines and Penalties	\$22,379	\$20,347	\$20,347	\$20,347
User Fees (Parental Support)	9,936	9,732	11,596	11,765
State Share Court Services	3,154,029	2,800,393	2,800,393	2,800,393
State Share Residential Services	3,307,116	3,054,863	3,054,863	3,054,863
Fairfax City Contract	608,329	599,117	599,117	746,553
USDA Revenue	94,183	99,500	99,500	99,500
<b>Total Income</b>	<b>\$7,195,972</b>	<b>\$6,583,952</b>	<b>\$6,585,816</b>	<b>\$6,733,421</b>
<b>NET COST TO THE COUNTY</b>	<b>\$16,825,291</b>	<b>\$22,790,658</b>	<b>\$23,039,080</b>	<b>\$24,166,509</b>
<b>AUTHORIZED POSITIONS/FULL-TIME EQUIVALENT (FTE)</b>				
Regular	306 / 304.5	306 / 304.5	306 / 304.5	305 / 303.5
State	50 / 49.6	50 / 49.6	50 / 49.6	50 / 49.6

# Juvenile and Domestic Relations District Court

## FY 2025 Funding Adjustments

The following funding adjustments from the FY 2024 Adopted Budget Plan are necessary to support the FY 2025 program:

**Employee Compensation** **\$1,696,611**  
 An increase of \$1,696,611 in Personnel Services includes \$505,617 for a 2.00 percent market rate adjustment (MRA) for all employees and \$389,270 for performance-based and longevity increases for non-uniformed merit employees, both effective July 2024. The remaining increase of \$801,724 is included for employee pay increases for specific job classes identified in the County's benchmark class survey of comparator jurisdictions.

**Contract Rate Increase** **\$76,712**  
 An increase of \$76,712 supports a contract rate increase for the providers of mandated and non-mandated services.

**State Salary Supplements** **\$17,077**  
 An increase of \$17,077 is included in salary supplements for state employees. This amount will fully fund the increased cost of the 15 percent subsidy that is provided by the County based on the state providing a 5 percent salary increase in FY 2023 and an additional 4 percent salary increase from the state in December of 2023.

**Department of Vehicle Services Charges** **\$3,827**  
 An increase of \$3,827 in Department of Vehicle Services Charges is based on anticipated billings for fuel, maintenance, and operating related charges.

**Reductions** **(\$268,907)**  
 A decrease of \$268,907 and 1/1.0 FTE position reflects reductions utilized to balance the FY 2025 budget. The following table provides details on the specific reductions:

Title	Impact	Positions	FTE	Reduction
Realize Savings Associated with Non-Merit Personnel	This reduction realizes savings of \$185,000 in non-merit personnel budget and is based on the current use of non-merit staff. It is not expected that this reduction will impact agency operations since it aligns budget to actual expenditures.	0	0.0	\$185,000
Eliminate Vacant Probation Counselor II Position	The reduction eliminates 1/1.0 FTE Probation Counselor II position that has been vacant for three years. Given the length of time this position has been vacant and the Juvenile and Domestic Relations District Court's ability to absorb the associated workload across the remaining staff, it is not expected that this reduction will adversely impact agency operations.	1	1.0	\$83,907

## Changes to FY 2024 Adopted Budget Plan

The following funding adjustments reflect all approved changes in the FY 2024 Revised Budget Plan since passage of the FY 2024 Adopted Budget Plan. Included are all adjustments made as part of the FY 2023 Carryover Review and all other approved changes through December 31, 2023.

**Carryover Adjustments** **\$250,286**  
 As part of the FY 2023 Carryover Review, the Board of Supervisors approved encumbered funding of \$250,286, including \$100,286 in Operating Expenses and \$150,000 in Capital Equipment.

# Juvenile and Domestic Relations District Court

## Cost Centers

Juvenile and Domestic Relations District Court Services has four cost centers: Court Services Administration, Intake Services, Probation Services, and Residential Services.

### Court Services Administration

The Court Services Administration cost center is responsible for the overall administrative management of the Juvenile Court's services. Staff in this cost center provide information technology support, research/evaluation, training, quality improvement monitoring, financial services, human resources administration, and court facilities management. Additional responsibilities include Volunteer Services and the Language Access Program.

Category	FY 2023 Actual	FY 2024 Adopted	FY 2024 Revised	FY 2025 Advertised
<b>EXPENDITURES</b>				
Total Expenditures	\$4,376,674	\$4,083,890	\$4,103,608	\$4,597,932
<b>AUTHORIZED POSITIONS/FULL-TIME EQUIVALENT (FTE)</b>				
Regular	38 / 38	38 / 38	33 / 33	33 / 33
State	50 / 49.6	50 / 49.6	50 / 49.6	50 / 49.6

### Intake Services

The newly established Intake Services cost center includes the Juvenile Intake Unit and the Domestic Relations Intake Unit. These units are responsible for processing all juvenile and adult-related intake complaints. The Juvenile Intake Unit is also responsible for operating a 24-hour intake program to review detention requests before the confinement of all juveniles. Additional responsibilities include the Assessment Services Unit, the Mediation Program, Supervised Visitation and Exchange, Victim Services, and the Gange Reduction and Intervention Coordinator.

Category	FY 2023 Actual	FY 2024 Adopted	FY 2024 Revised	FY 2025 Advertised
<b>EXPENDITURES</b>				
Total Expenditures	\$0	\$0	\$0	\$6,063,106
<b>AUTHORIZED POSITIONS/FULL-TIME EQUIVALENT (FTE)</b>				
Regular	0 / 0	0 / 0	65 / 64	65 / 64

# Juvenile and Domestic Relations District Court

## Probation Services

The Probation Services cost center includes two decentralized juvenile probation units located in North and South County. Additionally, the Community Corrections Unit provides adult probation services not specifically tied to County geography. These units are responsible for supervising juveniles and adults placed on probation by the Court. Supervised Release Services, which includes outreach detention, electronic monitoring, and the Intensive Supervision Program, are also operated out of this cost center. This cost center is responsible for providing supervision, monitoring, and services to juveniles, most of whom require a detention alternative while they are awaiting disposition.

Category	FY 2023 Actual	FY 2024 Adopted	FY 2024 Revised	FY 2025 Advertised
<b>EXPENDITURES</b>				
Total Expenditures	\$6,935,854	\$10,284,337	\$10,284,547	\$6,600,937
<b>AUTHORIZED POSITIONS/FULL-TIME EQUIVALENT (FTE)</b>				
Regular	111 / 109.5	111 / 109.5	67 / 67	66 / 66

## Residential Services

The Residential Services cost center operates and maintains four residential programs for court-involved youth as well as the 121-bed Juvenile Detention Center and three treatment programs for post-dispositional youth providing intensive individual, group, and family counseling services as well as educational programming. Stepping Stones is a 12-bed group home, serving adolescent males with long-term treatment needs and their families; Foundations is a 12-bed facility, serving adolescent females with long-term treatment needs and their families; and the Beta Program (located at JDC) is a post-dispositional 11-bed sentencing/treatment program for court-involved youth (primarily male) requiring incarceration and treatment services. Shelter Care is an 11-bed facility for pre-dispositional or post-dispositional youth that are either awaiting further court action or are pending alternative placement.

Category	FY 2023 Actual	FY 2024 Adopted	FY 2024 Revised	FY 2025 Advertised
<b>EXPENDITURES</b>				
Total Expenditures	\$12,708,735	\$15,006,383	\$15,236,741	\$13,637,955
<b>AUTHORIZED POSITIONS/FULL-TIME EQUIVALENT (FTE)</b>				
Regular	157 / 157	157 / 157	141 / 140.5	141 / 140.5

## Position Detail

The FY 2025 Advertised Budget Plan includes the following positions:

<b>COURT SERVICES ADMINISTRATION – 83 Positions</b>			
<b>Judicial</b>			
1	Chief District Court Judge, S	7	District Court Judges, S
<b>State Clerk of the Court</b>			
1	Clerk of the Court, S	35	State Clerks, S, 1 PT
6	Supervising State Clerks, S		
<b>Court Services Administration</b>			
1	Director of Court Services	1	Administrative Assistant V
3	Deputy Directors of Court Services	1	Administrative Assistant IV
1	Management Analyst IV	1	Administrative Assistant III
1	Probation Supervisor II	2	Administrative Assistants II



# Juvenile and Domestic Relations District Court

<b>Financial Services</b>			
1	Financial Specialist III	1	Administrative Assistant IV
2	Financial Specialists I	1	Administrative Assistant III
<b>Human Resources</b>			
1	Human Resources Generalist III	2	Administrative Assistants IV
1	Training Specialist III	2	Human Resources Generalists I
<b>Initiatives and Special Projects</b>			
1	Probation Supervisor II	1	Management Analyst I
1	Internet/Intranet Architect II	1	Communications Specialist II
<b>Research and Development</b>			
1	Management Analyst III	1	Management Analyst I
1	Management Analyst II		
<b>Language Access</b>			
1	Management Analyst III	1	Volunteer Services Coordinator II
1	Management Analyst II	1	Administration Assistant III
<b>INTAKE SERVICES – 65 Positions</b>			
<b>Intake Services Administration</b>			
1	Division Director of Court Services	2	Administrative Assistants III
1	Probation Counselor III	2	Administrative Assistants II, 1PT
1	Administrative Assistant IV		
<b>Assessment</b>			
1	Probation Supervisor II	3	Probation Counselors I
1	Probation Counselor III	1	Administration Assistant III
6	Probation Counselors II	1	Administrative Assistant II
<b>Domestic Relations</b>			
1	Probation Supervisor II	2	Probation Counselors I, 1 PT
2	Probation Supervisors I	1	Administrative Assistant V
1	Probation Counselor III	2	Administrative Assistants III
5	Probation Counselors II	4	Administrative Assistants II
<b>Juvenile Intake</b>			
1	Probation Supervisor II	2	Probation Counselors III
2	Probation Supervisors I	16	Probation Counselors II
<b>Victim Services</b>			
1	Probation Supervisor I	5	Probation Counselors II
<b>PROBATION SERVICES – 66 Positions</b>			
<b>Probation Services Administration</b>			
1	Division Director of Court Services	1	Probation Counselor II [-1]
1	Probation Supervisor II	1	Administrative Assistant II
2	Probation Counselors III		
<b>North County Center</b>			
1	Probation Supervisor II	1	Administrative Assistant III
1	Probation Counselor III	1	Administrative Assistant II
8	Probation Counselors II		
<b>South County Center</b>			
1	Probation Supervisor II	1	Administrative Assistant III
1	Probation Counselor III	1	Administrative Assistant II
8	Probation Counselors II		
<b>Community Corrections</b>			
1	Probation Supervisor II	3	Probation Counselors I
1	Probation Supervisor I	1	Administrative Assistant III
13	Probation Counselors II	1	Administrative Assistant II
<b>Supervised Release Services</b>			
1	Probation Supervisor II	11	Probation Counselors I
1	Probation Supervisor I	1	Administrative Assistant III
1	Probation Counselor II	1	Administrative Assistant II

# Juvenile and Domestic Relations District Court

<b>RESIDENTIAL SERVICES – 141 Positions</b>			
<b>Residential Services Administration</b>			
1	Division Director of Court Services		
<b>Foundations</b>			
1	Probation Supervisor II	4	Probation Counselors I
1	Probation Supervisor I	1	Administrative Assistant III
1	Probation Counselor III	1	Food Service Specialist
8	Probation Counselors II		
<b>Stepping Stones</b>			
1	Probation Supervisor II	4	Probation Counselors I
1	Probation Supervisor I	1	Administrative Assistant III
1	Probation Counselor III	1	Food Service Specialist
8	Probation Counselors II		
<b>Shelter Care</b>			
1	Probation Supervisor II	9	Probation Counselors I
1	Probation Supervisor I	1	Administrative Assistant III
2	Probation Counselors II		
<b>Family Counseling</b>			
1	Probation Counselor III	1	Administrative Assistant II
2	Probation Counselors II, 1 PT		
<b>Juvenile Detention Center</b>			
1	JDC Administrator	1	Administrative Assistant IV
3	Probation Supervisors II	1	Administrative Assistant III
5	Probation Supervisors I	1	Food Service Supervisor
8	Probation Counselors III	1	Gen. Building Maintenance Worker II
17	Probation Counselors II	1	Gen. Building Maintenance Worker I
41	Probation Counselors I	1	Maintenance Trade Helper I
1	Public Health Nurse II	1	Food Service Specialist
1	Licensed Practical Nurse	4	Cooks
	<b>Denotes Abolished Position(s) due to Budget Reductions</b>		
	<b>S Denotes State Position(s)</b>		
	<b>PT Denotes Part-time Position(s)</b>		

## Performance Measurement Results by Community Outcome Area

### Empowerment and Support for Residents Facing Vulnerability

The Court Services Administration cost center outcome performance measures quantify the extent and value of volunteer programs supporting court services. The JDRDC has two programs monitoring volunteers. The Volunteer and Intern Program provides volunteers and interns to all areas of the JDRDC upon request. In addition, the Volunteer Interpreter Program provides interpretation and translation services to JDRDC. In FY 2023, these two programs had 88 volunteers who provided 10,188 hours of services to JDRDC programs at a value of \$383,178.

Intake Services oversees the processing of juvenile and adult complaints brought into the JDRDC system. Intake offices processed 8,219 non-traffic complaints in FY 2023, a 21 percent increase from FY 2022. In FY 2023, the agency diverted 10 percent of youth from formal court processing. These cases are either provided services at the intake level or are referred to other, more appropriate service providers. The methodology for calculating this percentage measures the percentage of juvenile clients being diverted out of the total juvenile intakes; however, not every juvenile client is eligible for diversion. Therefore, the measure will be updated in future years to reflect the percentage of juvenile clients diverted out of diversion-eligible intakes. Based on this new methodology, in FY 2023, the agency diverted 92 percent of the 371 eligible youth from formal court processing. Of the 27 customers who responded to the survey 96 percent were satisfied with the intake process.

# Juvenile and Domestic Relations District Court

Residential Services includes three major service areas: the Shelter Care (SC) program provides shelter care and crisis intervention for court-involved youth; Secure Detention Services (SDS) which refers to the Juvenile Detention Center; and Community-Based Residential Services (CBRS) which includes both the Foundations Program and Stepping Stones. Accomplishments for each service in FY 2023 are as follows:

- SC operated at 60 percent of capacity at a cost of \$388 per bed day. Ninety-five percent of parents who responded to the customer satisfaction surveys were satisfied with SC services. Eighty-five percent of the youth placed in the shelter during the year appeared at their scheduled court hearing.
- SDS operated at 56 percent of capacity at a cost of \$252 per bed day. Ten percent of the 533 placements in FY 2023 resulted in the need to use physical restraint on a youth. This was a 1 percent increase from FY 2022. One hundred percent of the youth held in detention appeared at their scheduled court hearing, exceeding the performance target of 98 percent.
- CBRS programs operated at 50 percent of capacity at a cost of \$465 per bed day. In FY 2023, 69 percent of the 13 juveniles discharged from CBRS had no new delinquent petitions for one year following their discharge.

## Safety and Security

Probation Services includes the following major service areas: supervision services, assessment, counseling, and supervision of youth and adults who have been placed on probation. In FY 2023, the average monthly juvenile probation officer caseload was 14; the average monthly adult probation officer caseload was 46. Juvenile probation caseloads increased by 40 percent while adult probation caseloads decreased by 33 percent from FY 2022 caseloads. Ninety-eight percent of court-ordered investigations for juveniles were submitted at least 72 hours prior to the court date in FY 2023. In FY 2023, 89 percent of juveniles on probation had no new criminal reconvicitions within 12 months of case closure.

Supervised Release Services operated at 129 percent of its capacity at a cost of \$188 per day. Ninety-nine percent of youth had face-to-face contact with SRS staff within 24 hours of assignment to SRS. Eighty-eight percent of the youth in the program remained free of new criminal or Child In Need of Supervision or Services (CHINS) petitions while under SRS supervision.

Community Outcome Area	FY 2021 Actual	FY 2022 Actual	FY 2023 Estimate	FY 2023 Actual	FY 2024 Estimate	FY 2025 Estimate
<b>Empowerment and Support for Residents Facing Vulnerability</b>						
<b>Services Are High Quality and Coordinated</b>						
Percent of Secure Detention Services (SDS) youth who appear at scheduled court hearing	100%	100%	98%	100%	98%	98%
Percent of Shelter Care (SC) youth who appear at scheduled court hearing	88%	85%	90%	85%	90%	90%
Percent of youth diverted from formal court processing	10%	13%	15%	10%	15%	15%
Value of services added	\$266,208	\$357,083	\$400,000	\$383,178	\$400,000	\$400,000

# Juvenile and Domestic Relations District Court

Community Outcome Area	FY 2021 Actual	FY 2022 Actual	FY 2023 Estimate	FY 2023 Actual	FY 2024 Estimate	FY 2025 Estimate
<b>Safety and Security</b>						
<b>Following Rules and Regulations</b>						
Percent of Community-Based Residential Services (CBRS) discharged youth with no new delinquent petitions for 1 year	85%	81%	65%	69%	65%	65%
Percent of juveniles with no new criminal convictions within 12 months of case closing	69%	87%	65%	89%	65%	65%
Percent of Supervised Release Services (SRS) youth with no new delinquency or Child In Need of Supervision or Services (CHINS) petitions while under supervision	78%	80%	85%	88%	85%	85%

A complete list of performance measures can be viewed at <https://www.fairfaxcounty.gov/budget/fy-2025-advertised-performance-measures-pm>