

AGENDA

1. Welcome and Announcements

2. Transportation Visioning (Part 2)

3. Parks, Trails and Natural Resources

4. Consultants Update

5. Task Force Schedule Update

Countywide Policies

Land Use

Environment

Chesapeake Bay Supplement

Parks & Recreation

Transportation



Policy Plan:

The Countywide Policy Element
of
The Comprehensive Plan
for Fairfax County, Virginia



A Fairfax County,
Virginia publication

2017 EDITION

The Comprehensive Plan is on the Fairfax County Web site at:
www.fairfaxcounty.gov/dpz/comprehensiveplan

The Web version of the Plan is always the most up-to-date. Compare this printed document with the
Comprehensive Plan on the Web to determine if this volume has been updated with the most recent amendments.

Interagency Reviews and Coordination

Thomas Burke and Sean Schweitzer

Fairfax County Department of Transportation (FCDOT):
Transportation Planning Division

Anthony Obuekwe

Department of Planning and Development / Planning Division (DPD-PD): Environment
and Development Review Branch

Catherine Torgerson

Department of Public Works and Environmental Services (DPWES):
Stormwater Planning Division

Andrew Galusha

Fairfax County Park Authority (FCPA):
Park Planning Branch



Lorton Visioning Plan Amendment Study

**Pohick Creek Visioning
(Environment, Trails & Recreation)**

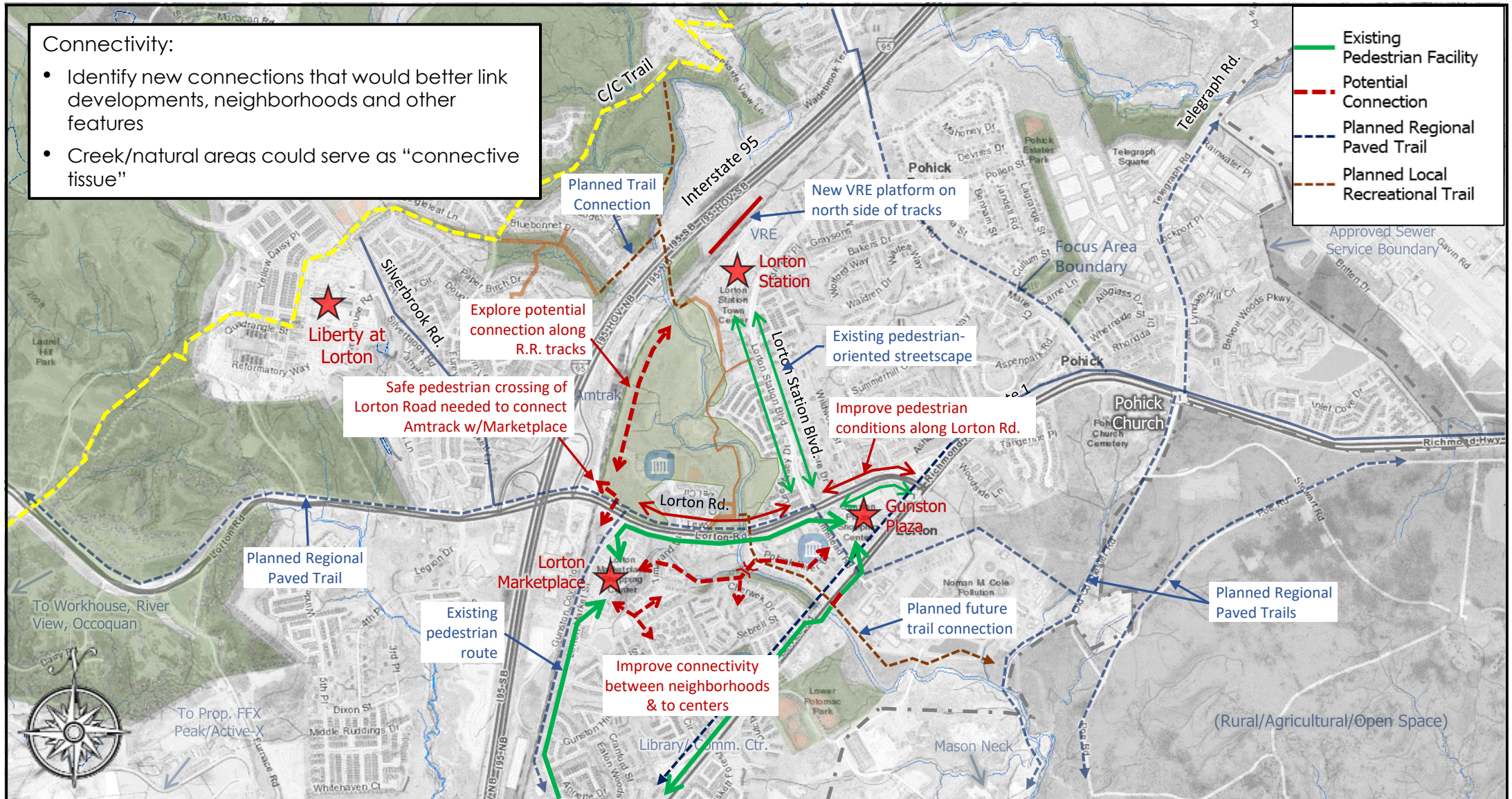
May 17, 2021



Lorton Visioning - Secondary Corridors & Connections

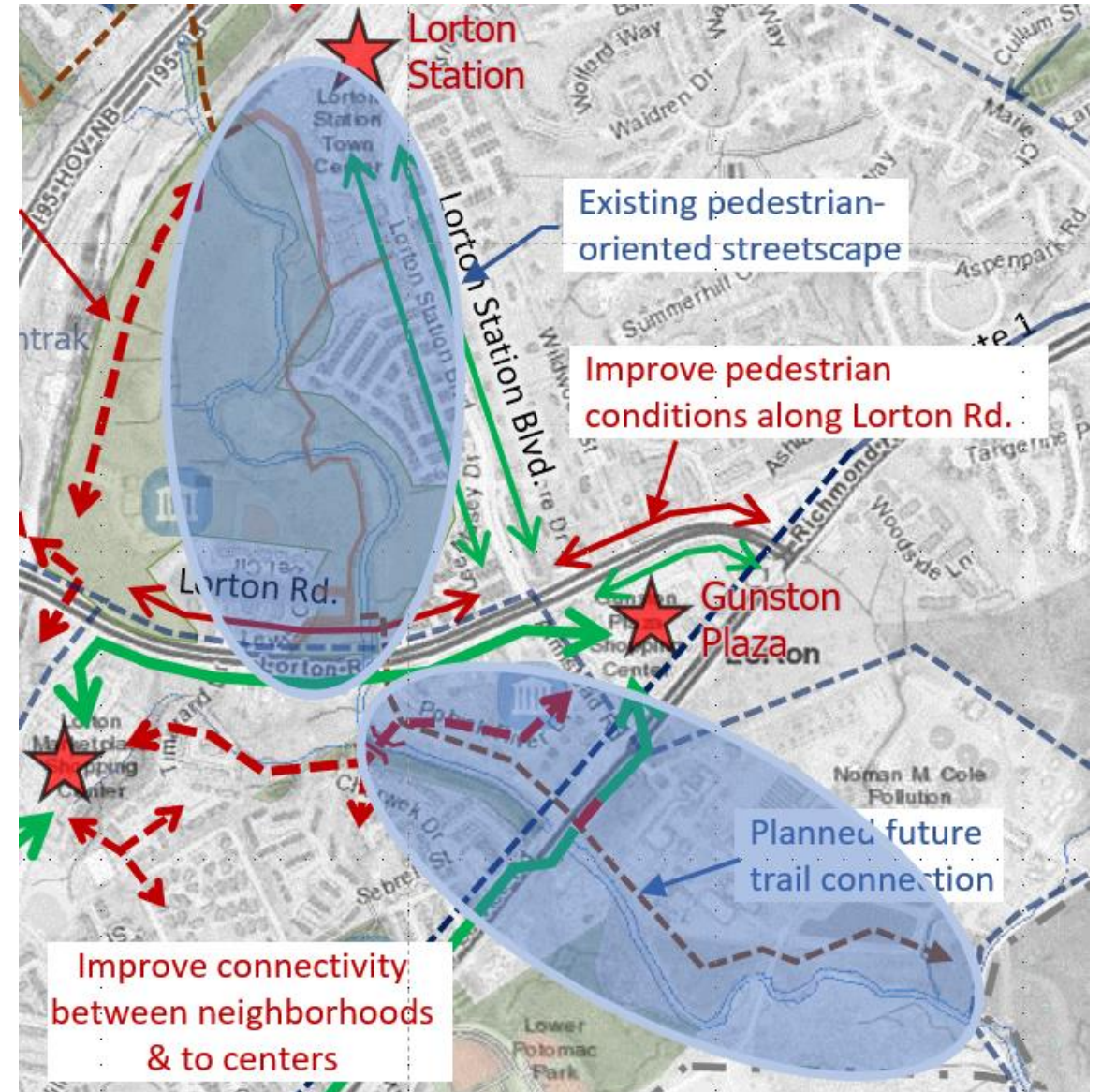
Connectivity:

- Identify new connections that would better link developments, neighborhoods and other features
- Creek/natural areas could serve as “connective tissue”



Task Force Visioning Notes

- Pohick Creek area could be central feature with defining characteristic
 - Creek/natural areas could serve as “connective tissue” for ped/bike access
 - Future connection south to planned regional paved trails in Pohick Regional Park and north to Cross-County Trail
- Pohick Creek could be linking item to redevelopment; could be a huge development opportunity for fishing, trails, recreation
- Consider connection under Lorton Rd. along creek
- Shouldn't use as pollution catchment - can't fish if polluted
- RPA may actually be different from what is shown on the County maps
- Future discussion about area around Lorton Station ES discussed and RPA policy.



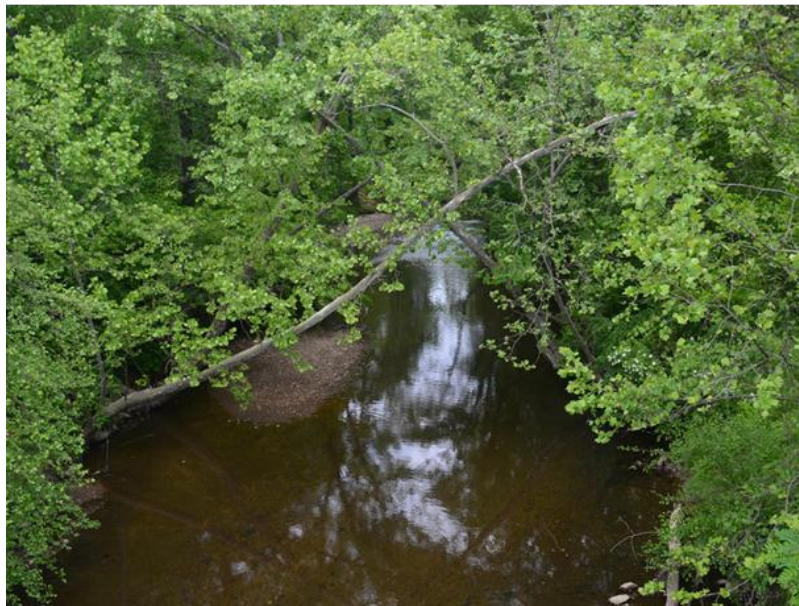


**Virginia Auto
Train Station**

**Stormwater
Conservation
Easement**

Existing trail

Land Area: 93.8 acres
Owner: Fairfax County Board of Supervisors (dedicated with development of Lorton Station)
Comprehensive Plan: Private Open Space



EQC / RPA / Floodplain / Wildlife Habitat

Planned trail connection

Pohick Stream Valley Park

VDRPT-recommended BRT Station



Lorton Visioning Task Force Guiding Principles

To begin a community dialogue on Lorton's vision for the future, an online community survey and a community meeting were utilized to collect ideas and opinions from Lorton area residents and visitors. These ideas were summarized into **themes** describing the desirable features of Lorton today and in the future. The Visioning Guiding Principles were drafted as a final product to be shared with and solicit further feedback from the community.



Heritage Resources and Environment

6. **Act as responsible stewards of heritage, cultural, and natural resources.**
 - a. Understand and study impacts of potential development
 - b. Promote conservation and preservation efforts
 - c. Preserve Approved Sewer Service Area boundary
 - d. Embrace environmental and heritage resources such as the natural areas, parks, the Workhouse Arts Center, museums, and Suffragist history to amplify community pride**
 - e. Develop with the optimization of renewable energy investment; community gardens and greenhouses; and other environmentally focused development activities

Other Related Guiding Principles

- Celebrate and promote more active and outdoor recreation opportunities, as well as access to parkland (Health and Recreation - 4.b.)
- Enhance community connections to natural resources and other destinations throughout Lorton through a variety of safe, efficient, and interconnected transportation modes (Accessibility and Connectivity - 5)
- Substantially expand existing trails and connect to the interregional trail system (Accessibility and Connectivity 5.b.)
- Prioritize infrastructure for “active transportation” including bicycles and pedestrians at all ages and abilities (Accessibility and Connectivity 5.c.)

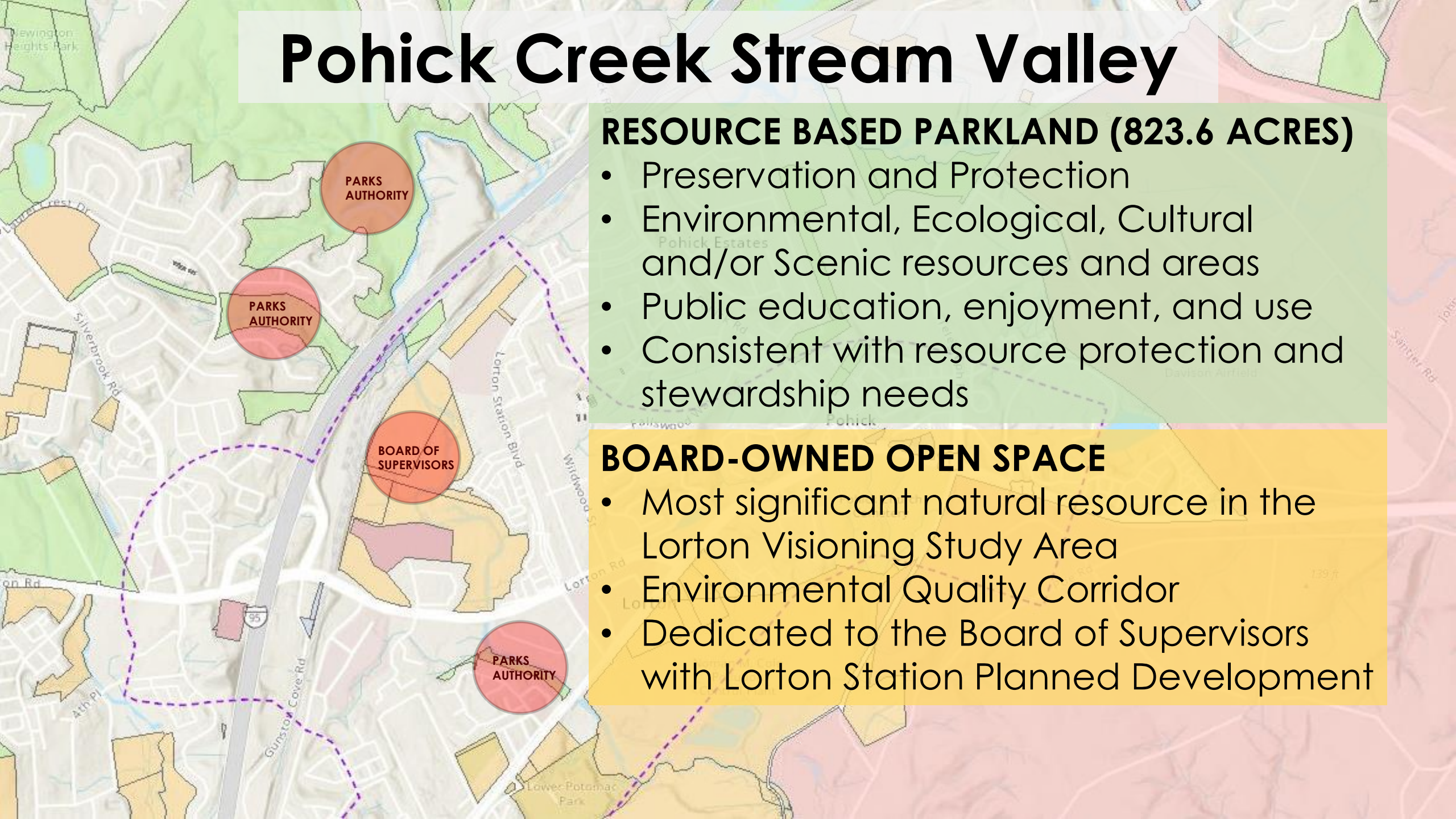
Pohick Creek Stream Valley

RESOURCE BASED PARKLAND (823.6 ACRES)

- Preservation and Protection
- Environmental, Ecological, Cultural and/or Scenic resources and areas
- Public education, enjoyment, and use
- Consistent with resource protection and stewardship needs

BOARD-OWNED OPEN SPACE

- Most significant natural resource in the Lorton Visioning Study Area
- Environmental Quality Corridor
- Dedicated to the Board of Supervisors with Lorton Station Planned Development

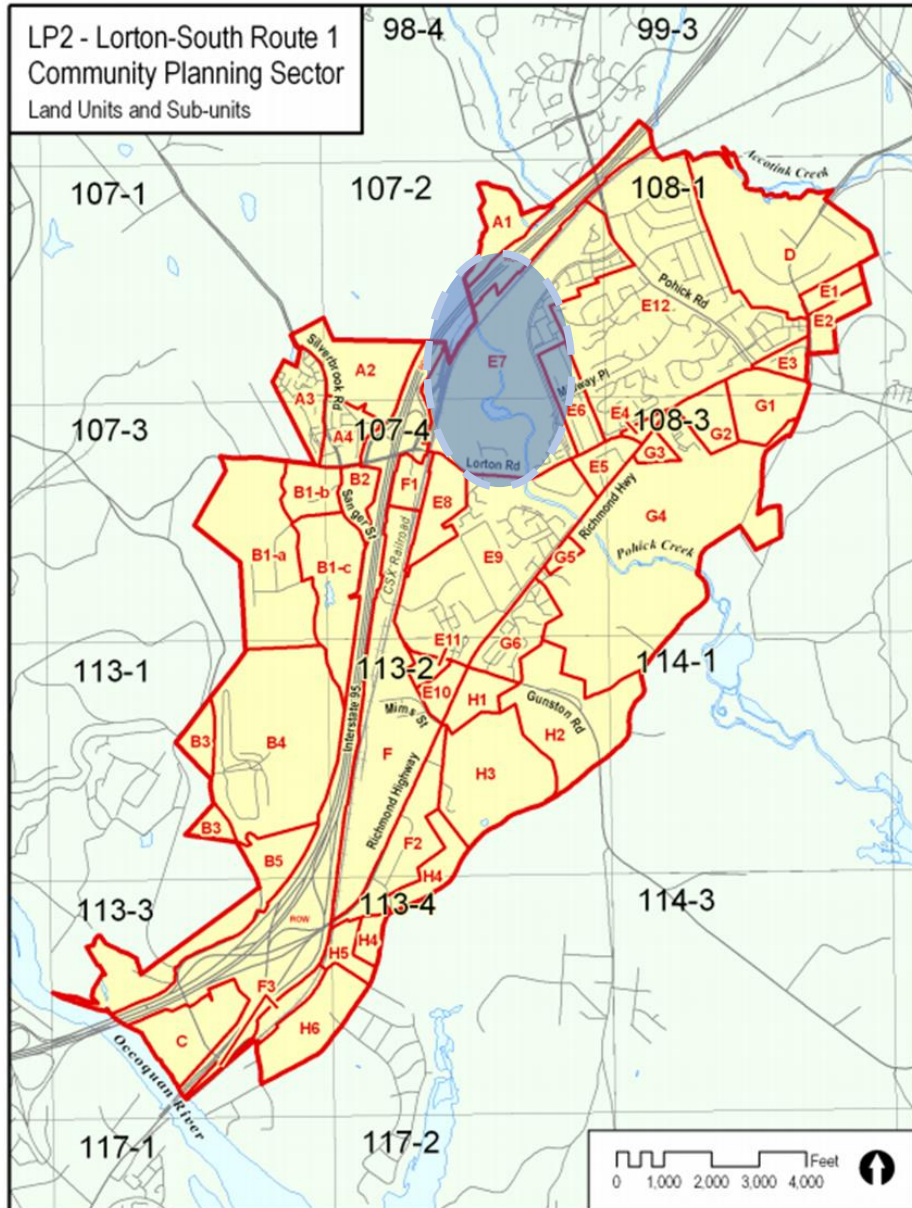


Land Use Plan Guidance

Recommendations for Sub-unit E7:

“The Pohick Creek Environmental Quality Corridor is part of the Pohick Greenway and should be dedicated to the Board of Supervisors for public park purposes.”

Active and passive recreational uses should be provided or a contribution for recreational uses appropriate to the residential development on-site should be provided. Recreational uses consistent with the Chesapeake Bay Preservation Ordinance may be considered in the EQC.”





Globally Rare Natural Area

Existing Conditions

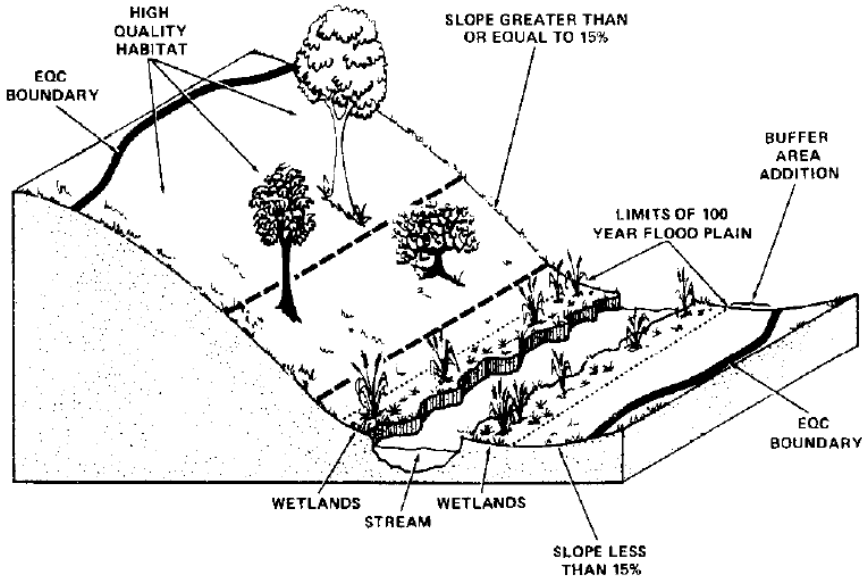
- Globally rare wetland communities
- Extremely rare forested wetland community

Preservation Goals and Strategies

- Conservation easements (see green hatching)
- The County's Stream Protection Strategy (SPS) Report recommends maintaining this section of Pohick Creek to prevent further degradation.

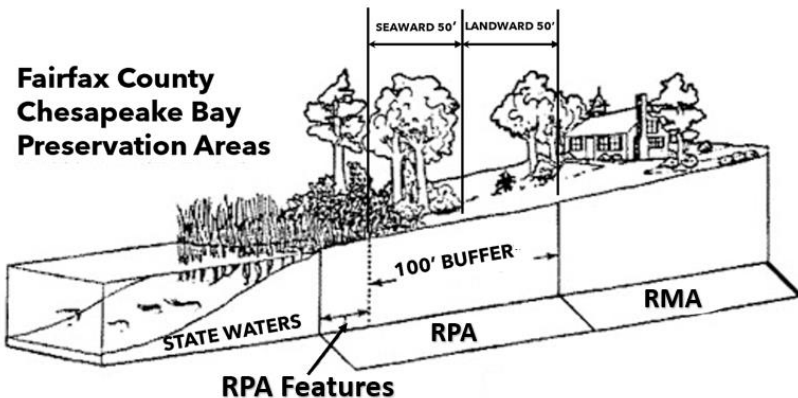
Environmental Quality Corridors (EQC)

FAIRFAX COUNTY COMPREHENSIVE PLAN, 2017 Edition,
Environment, Amended through 12-3-2019 LP2-Lorton-South
(Pages 15-18):



Cross-section of a Typical Environmental Quality Corridor

Objective 9: *Identify, protect, and enhance an integrated network of ecologically valuable land and surface waters for present and future residents of Fairfax County.*



Community Benefits

Protect and restore:

- *Habitat Quality / Minimizes impacts to wetlands*
- *Connectivity (facilitate movement of wildlife and/or conserve biodiversity)*
- *Hydrology/Stream Buffering/Stream Protection*
- *Pollution Reduction Capabilities / Water Quality*
- *Improves air quality*
- *Buffers residences from impacts of I-95 (vehicular noise and lights)*

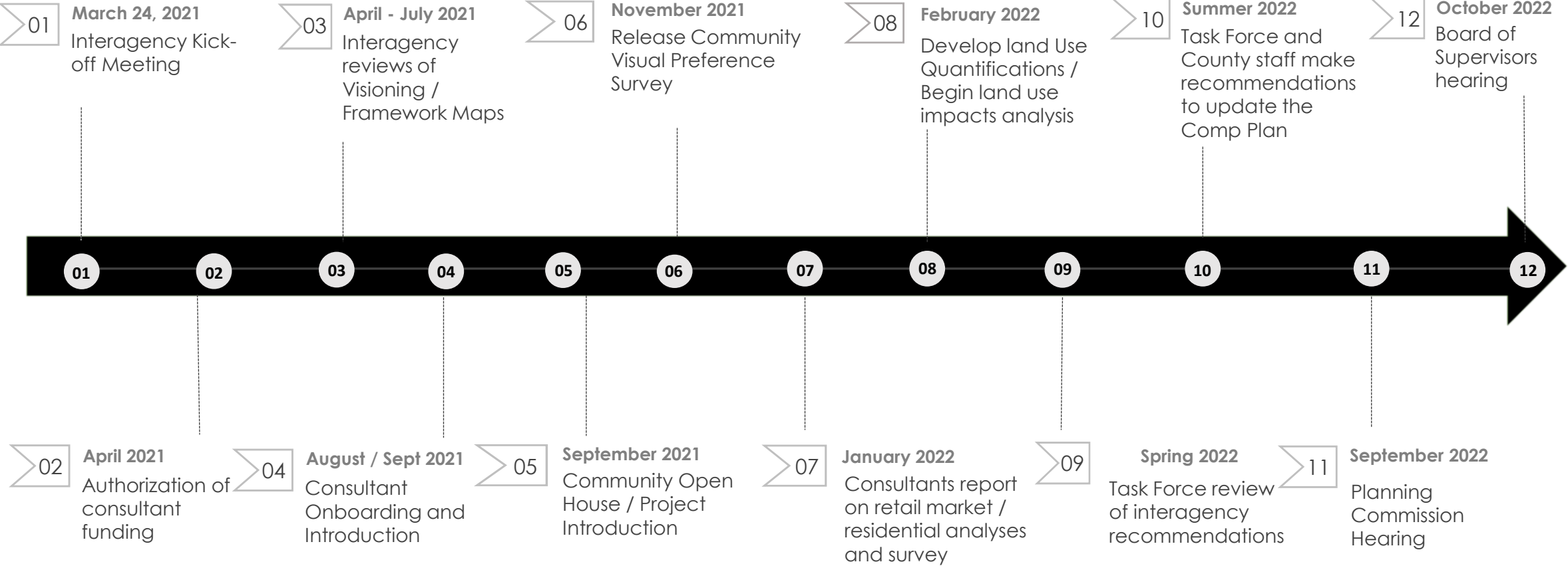
Policy and Ordinance Recommendations

Mitigation measures, for any proposed passive recreation i.e., trail development of the site should incorporate the following:

- Minimize development of natural or gravel-based paths/bikeways in the natural areas by ensuring that pathways are no more than **4 feet wide**.
- Keep the good quality floodplain forests intact and minimize wetland impacts.
- Revegetation of RPA and floodplain areas where necessary.
- Floodplain use determination should be required for all proposed impact to the floodplain.
- Low level crossings are recommended for bridges if proper care is given to minimize impact to the RPA.
- Protect air quality by limiting automobile dependent uses

Questions?

Lorton Visioning Plan Amendment Study Task Force



16 Task Force Meetings and 5 Community Engagement Opportunities