

# AGENDA

1. Welcome and Announcements

2. Update: Pohick Creek Visioning

3. Policy and Land Use Guidance

4. Schedule and Consultant Procurement

5. Next Steps: Public Involvement



# **Lorton Visioning Plan Amendment Study**

**Update: Pohick Creek Visioning  
(Environment, Trails & Recreation)**

June 21, 2021



# Globally Rare Natural Area

## Owner

- Fairfax County Board of Supervisors

## Existing Conditions

- Globally rare wetland communities
- Extremely rare forested wetland community

## Preservation Goals and Strategies

- Conservation easements (see green hatching)
- The County's Stream Protection Strategy (SPS) Report recommends maintaining this section of Pohick Creek to prevent further degradation.



# Lorton Visioning – Lorton Seepage Bog Stormwater Environmental Comments

Stormwater Planning Division



Department of Public Works and Environmental Services  
*Working for You!*



# Ecological Significance

## Virginia Natural Natural Heritage Description

- Site Name: Pohick Seeps
- Community Name: Northern Coastal Plain Terrace Gravel Bog
- Ecological Group: Coastal Plain/Piedmont Seepage Bog
- Community Diagnostic Species: *Nyssa sylvatica* – *Magnolia virginiana* – (*Pinus rigida*)/*Rhododendron viscosum* – *Toxicodendron vernix*/*Smilax pseudochina*
- Conservation Status\*: G1/S1 – Critically Imperiled (At very high risk of extinction or elimination due to very restricted range, very few populations or occurrences, very steep declines, very severe threats, or other factors.)

\*NatureServe: <https://www.natureserve.org/conservation-tools/conservation-status-assessment>.



**Lorton  
Seepage Bogs**

**Pohick Seep**

**Magnolia Bog**



# Pohick Creek Stream Conditions

Overall, the lower mainstem of Pohick Creek has a “fair” condition, based upon benthic macroinvertebrate monitoring.

Benthic scores indicate that small tributaries draining the lower Pohick landscape to the mainstem throughout the Laurel Hill, Lorton Station, and adjacent to Noman Cole are highly variable.

Some are rated as “excellent” (best available in the County) to “very poor.”

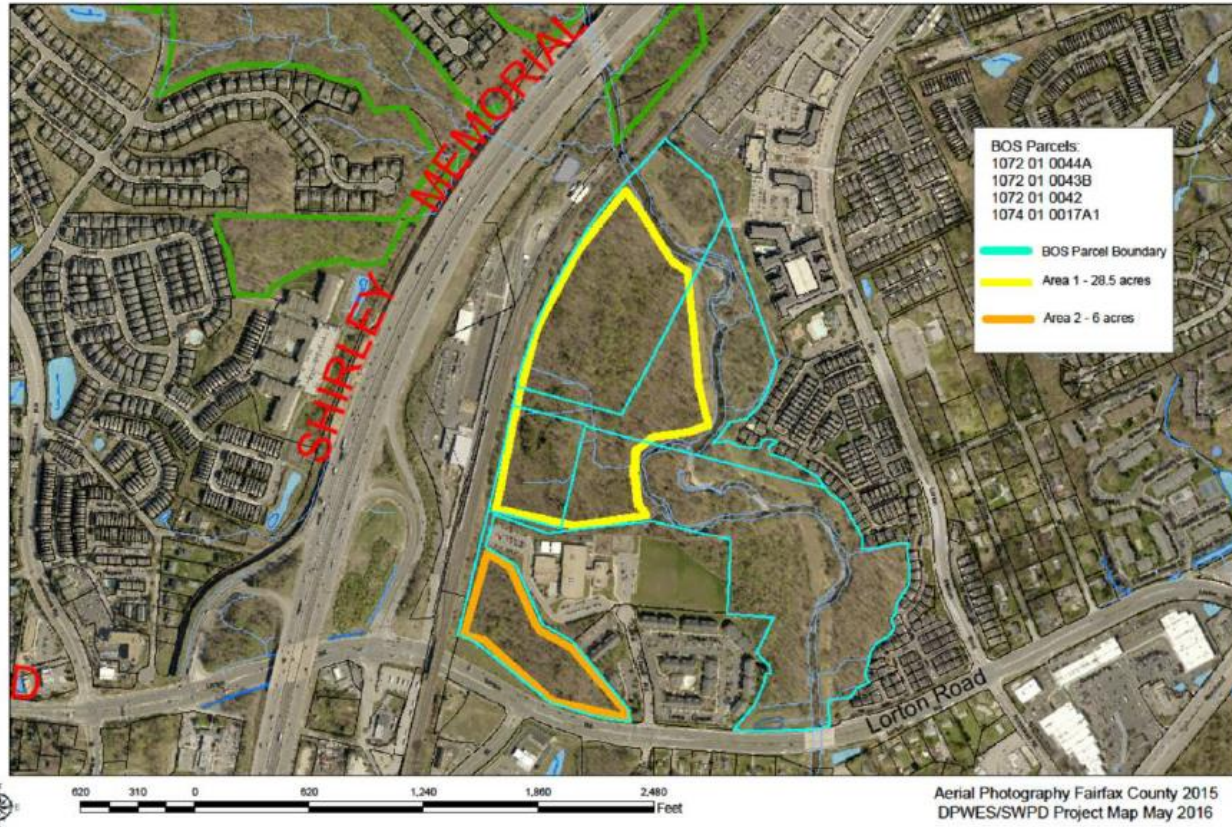
Each small drainage (draining 40-50+ acres”) needs to be evaluated individually to comment on specific biological quality.

The lower Pohick has one of the most diverse fish native communities in the County, partly due to the connectivity and adjacency to tidal waters, and underlying geology throughout the transition from Piedmont to Coastal Plain.



# Stormwater Conservation Easements

Lorton BOS Property Potential Conservation Easement Areas



These conservation easements were established to offset water quality requirements from two Fairfax County capital projects: the Huntington Levee and a fire station project.

The conservation easements help preserve and protect the Pohick Seeps wetlands.



# Parking Lot Flooding

Drainage issues at the Fields at Lorton Station **are not** caused by stormwater runoff from the Amtrak station.



# Trails and Recreation

- Porous asphalt / concrete and similar permeable pavement solutions are not practical solutions in the floodplain.

Trail leading behind the Fields at Lorton Station

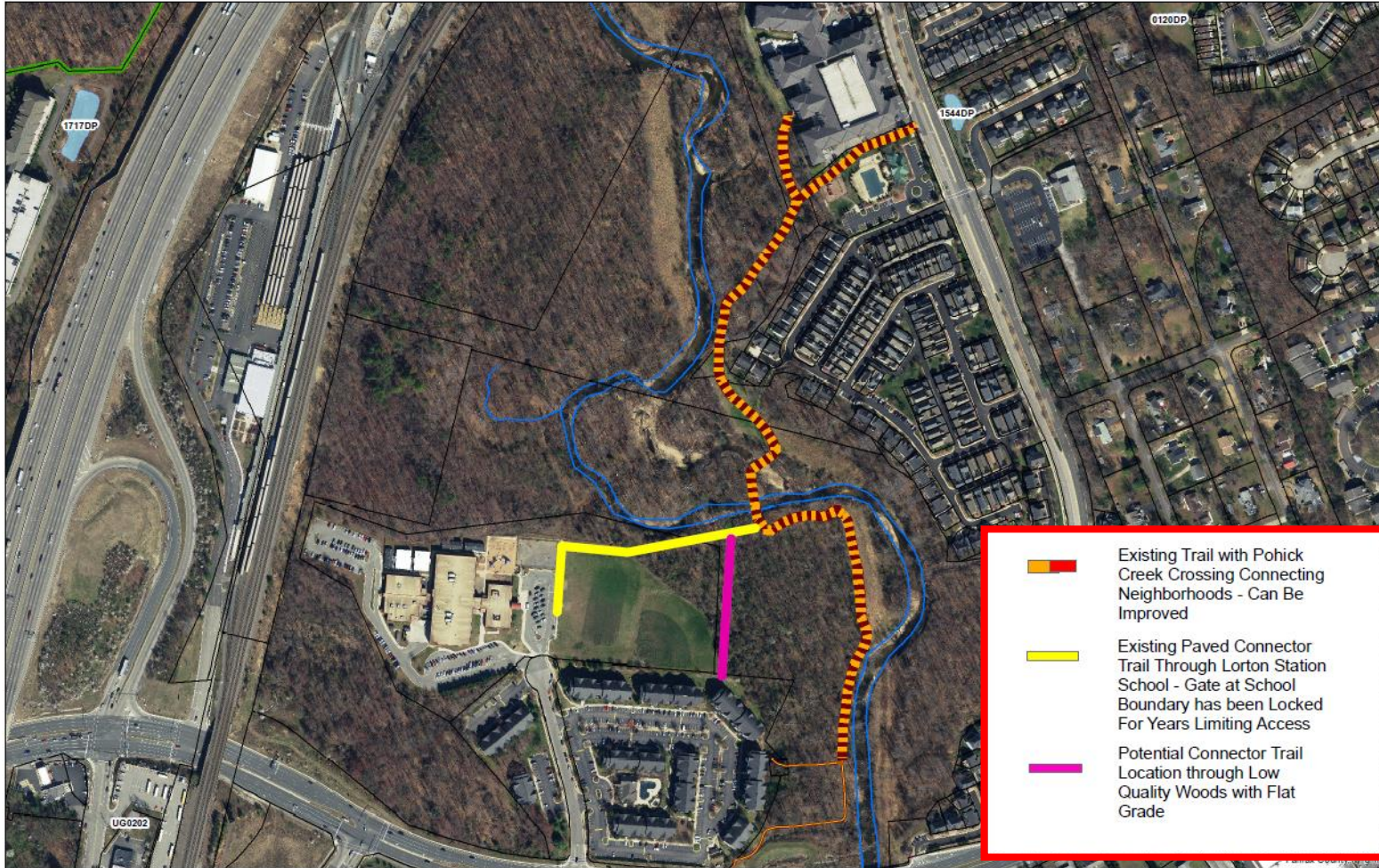
- The existing Trail with creek crossing connecting neighborhoods can be improved (to some extent).

Stormwater Planning Handout - Page 11



# What can be done?

## Lorton Visioning Trail Options



-  Existing Trail with Pohick Creek Crossing Connecting Neighborhoods - Can Be Improved
-  Existing Paved Connector Trail Through Lorton Station School - Gate at School Boundary has been Locked For Years Limiting Access
-  Potential Connector Trail Location through Low Quality Woods with Flat Grade

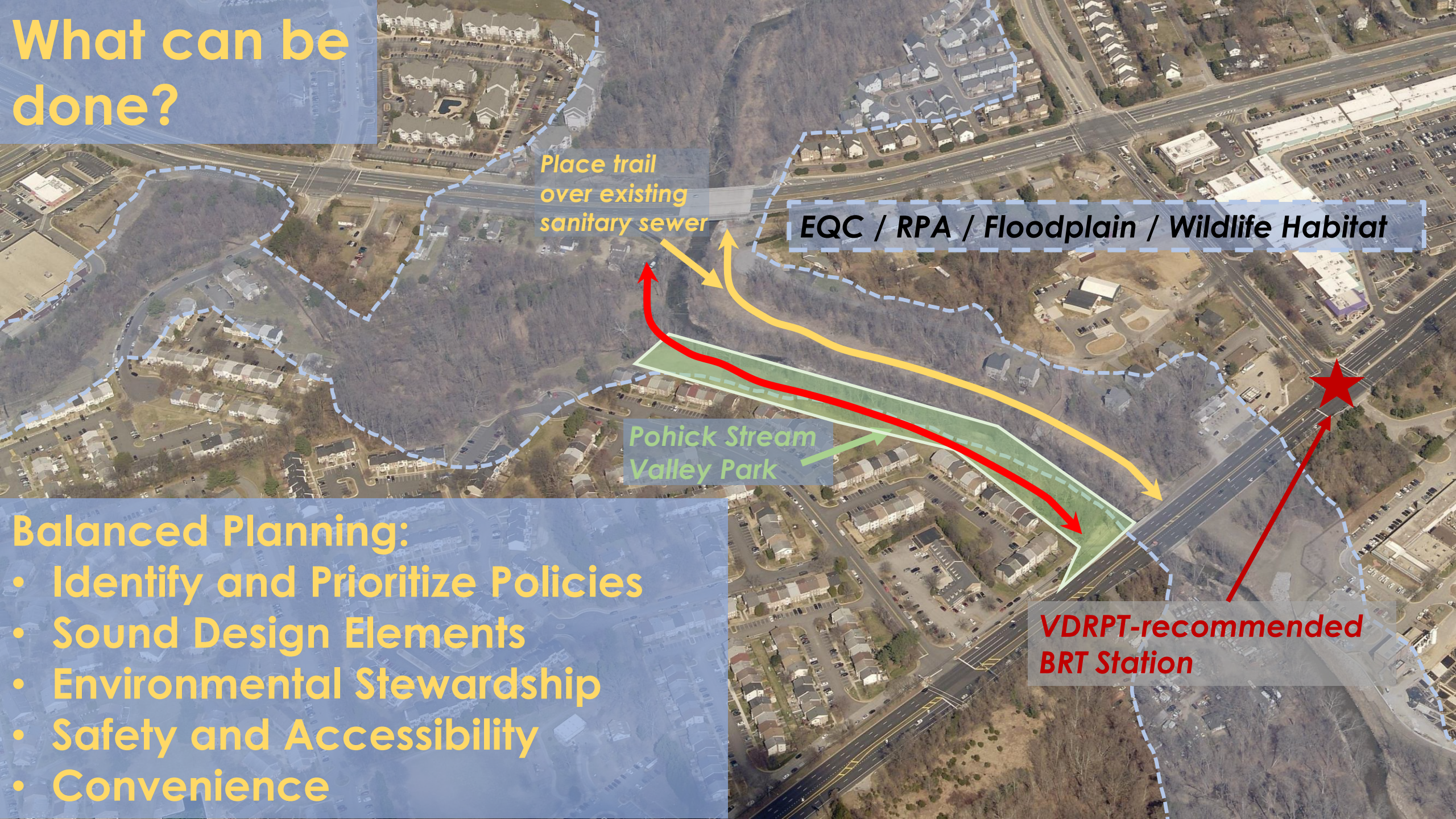
Solutions recommended by DPWES



400 200 0 400 800 1,200 1,600 Feet

Source: Fairfax County DPWES/SWPD Project Map June 2021

# What can be done?



Place trail over existing sanitary sewer

EQC / RPA / Floodplain / Wildlife Habitat

Pohick Stream Valley Park

VDRPT-recommended BRT Station

## Balanced Planning:

- Identify and Prioritize Policies
- Sound Design Elements
- Environmental Stewardship
- Safety and Accessibility
- Convenience

Questions?