

SEALS
**100% CONSTRUCTION DOCUMENTS
DO NOT USE FOR CONSTRUCTION**

**MOUNT VERNON DISTRICT
COUNTY OF FAIRFAX,
VIRGINIA
HUNTINGTON LEVEE PROJECT
PHASE II
02779040.02LS**

NO.	DATE	ISSUED FOR	BY
REVISIONS APPROVED BY OFFICE OF SITE DEVELOPMENT SERVICES			
COPYRIGHT: ARCADIS U.S., INC. 2012			
DATE: FEBRUARY 2016			
PROJECT NO.: 02779040.02LS			
FILE NAME: 0201-LP-LP-401			
DESIGNED BY: W. PEART			
DRAWN BY: K. KURDZIOLEK			
CHECKED BY: J. McCLELLAN			

SHEET TITLE
**LANDSCAPE
PLANTING PLAN -
SHEET I**

SCALE: AS SHOWN
LP-401

SHEET LEGEND

LP-401	LP-402	LP-403	LP-404
--------	--------	--------	--------

SEE SHEET LP-405 FOR SPECIFIC AREAS

SCREEN #1
TRANSITIONAL SCREEN REQ: TYPE 2
BARRIER REQ: D, E, OR F
TRANSITIONAL SCREENING/BARRIER PROVIDED:
(SEE SHEET LP-405)

NOTE: NO PLANTINGS PROVIDED DUE TO INSUFFICIENT SPACE RESULTING FROM PROPOSED LEVEE/TRAIL.

SCREEN #2
TRANSITIONAL SCREEN REQ: TYPE 2
BARRIER REQ: D, E, OR F
TRANSITIONAL SCREENING/BARRIER PROVIDED:
(SEE SHEET LP-405)

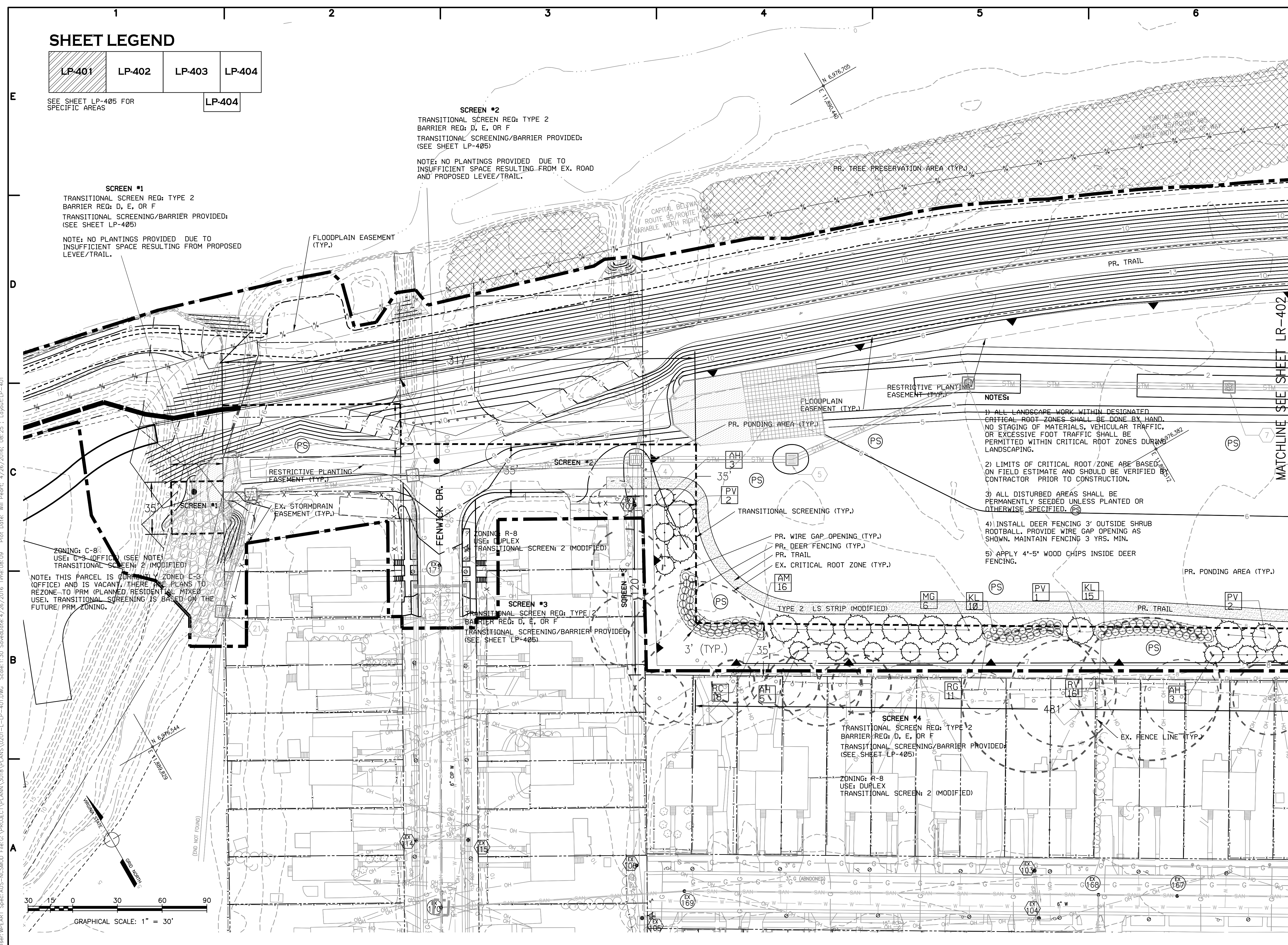
NOTE: NO PLANTINGS PROVIDED DUE TO INSUFFICIENT SPACE RESULTING FROM EX. ROAD AND PROPOSED LEVEE/TRAIL.

SCREEN #3
TRANSITIONAL SCREEN REQ: TYPE 2
BARRIER REQ: D, E, OR F
TRANSITIONAL SCREENING/BARRIER PROVIDED:
(SEE SHEET LP-405)

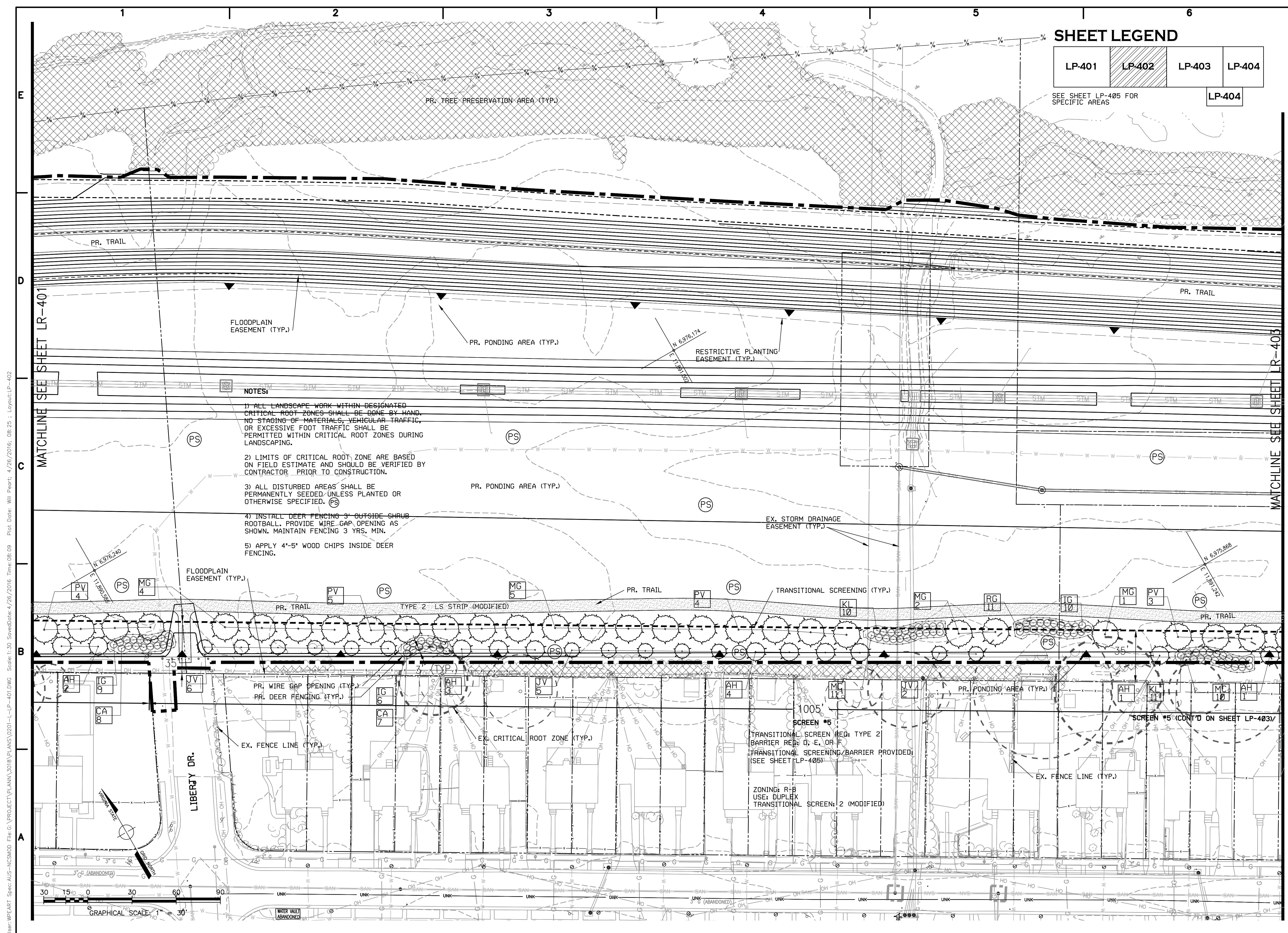
SCREEN #4
TRANSITIONAL SCREEN REQ: TYPE 2
BARRIER REQ: D, E, OR F
TRANSITIONAL SCREENING/BARRIER PROVIDED:
(SEE SHEET LP-405)

NOTES:

- 1) ALL LANDSCAPE WORK WITHIN DESIGNATED CRITICAL ROOT ZONES SHALL BE DONE BY HAND. NO STAGING OF MATERIALS, VEHICULAR TRAFFIC, OR EXCESSIVE FOOT TRAFFIC SHALL BE PERMITTED WITHIN CRITICAL ROOT ZONES DURING LANDSCAPING.
- 2) LIMITS OF CRITICAL ROOT ZONE ARE BASED ON FIELD ESTIMATE AND SHOULD BE VERIFIED BY CONTRACTOR PRIOR TO CONSTRUCTION.
- 3) ALL DISTURBED AREAS SHALL BE PERMANENTLY SEEDED UNLESS PLANTED OR OTHERWISE SPECIFIED.
- 4) INSTALL DEER FENCING 3' OUTSIDE SHRUB ROOTBALL. PROVIDE WIRE GAP OPENING AS SHOWN. MAINTAIN FENCING 3 YRS. MIN.
- 5) APPLY 4"-5" WOOD CHIPS INSIDE DEER FENCING.



User: WPEART Spec: AUS-NCSMOD File: G:\PROJECT\PLANN\3018\PLANS\0201-LP-LP-401.DWG Scale: 1:30 SavedDate: 4/26/2016 Time: 08:09 Plot Date: 4/26/2016 08:25 Layout: LP-401



SHEET LEGEND

LP-401	LP-402	LP-403	LP-404
--------	--------	--------	--------

SEE SHEET LP-405 FOR SPECIFIC AREAS

- NOTES:**
- 1) ALL LANDSCAPE WORK WITHIN DESIGNATED CRITICAL ROOT ZONES SHALL BE DONE BY HAND. NO STAGING OF MATERIALS, VEHICULAR TRAFFIC, OR EXCESSIVE FOOT TRAFFIC SHALL BE PERMITTED WITHIN CRITICAL ROOT ZONES DURING LANDSCAPING.
 - 2) LIMITS OF CRITICAL ROOT ZONE ARE BASED ON FIELD ESTIMATE AND SHOULD BE VERIFIED BY CONTRACTOR PRIOR TO CONSTRUCTION.
 - 3) ALL DISTURBED AREAS SHALL BE PERMANENTLY SEEDED UNLESS PLANTED OR OTHERWISE SPECIFIED. (PS)
 - 4) INSTALL DEER FENCING 3' OUTSIDE SHRUB ROOTBALL. PROVIDE WIRE GAP OPENING AS SHOWN. MAINTAIN FENCING 3 YRS. MIN.
 - 5) APPLY 4"-5" WOOD CHIPS INSIDE DEER FENCING.

LEGAL ENTITY:
ARCADIS U.S., INC.
3101 WILSON BLVD., SUITE 550
ARLINGTON, VA 22201

CONSULTANTS

4501 Daly Drive
Chantilly, VA 20151
Phone: 703-263-1900
www.gordon.us.com

SEALS

**100% CONSTRUCTION DOCUMENTS
DO NOT USE FOR CONSTRUCTION**

**MOUNT VERNON DISTRICT
COUNTY OF FAIRFAX,
VIRGINIA
HUNTINGTON LEVEE PROJECT
PHASE II
02779040.02LS**

NO.	DATE	ISSUED FOR	BY

REVISIONS APPROVED BY OFFICE OF SITE DEVELOPMENT SERVICES

COPYRIGHT: ARCADIS U.S., INC. 2012

DATE: FEBRUARY 2016
PROJECT NO.: 02779040.02LS
FILE NAME: 0201-LP-401
DESIGNED BY: W. PEART
DRAWN BY: K. KURDZIOLEK
CHECKED BY: J. McCLELLAN

SHEET TITLE

**LANDSCAPE
PLANTING PLAN -
SHEET II**

SCALE: AS SHOWN

LP-402

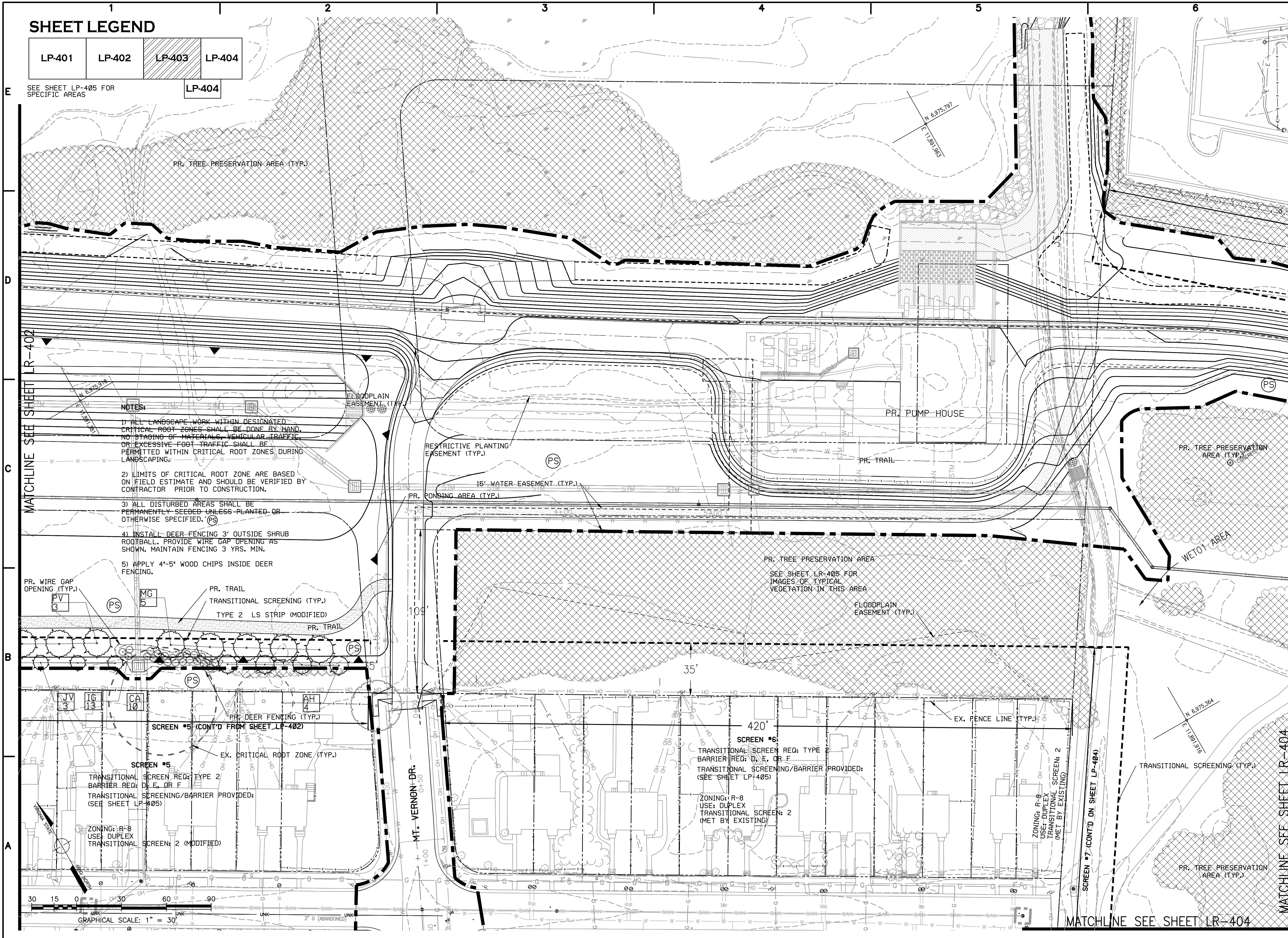
User: WPEART Spec: AUS-NCSMOD File: G:\PROJECT\PLANN\3018\PLANS\0201-LP-401.DWG Scale: 1:30 SavedDate: 4/26/2016 Time: 08:09 Plot Date: 4/26/2016 08:25 ; Layout: LP-402

SHEET LEGEND

LP-401	LP-402	LP-403	LP-404
--------	--------	--------	--------

SEE SHEET LP-405 FOR SPECIFIC AREAS

LP-404

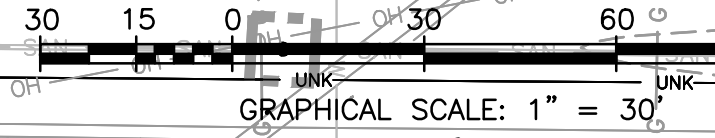


NOTES:

- 1) ALL LANDSCAPE WORK WITHIN DESIGNATED CRITICAL ROOT ZONES SHALL BE DONE BY HAND. NO STAGING OF MATERIALS, VEHICULAR TRAFFIC, OR EXCESSIVE FOOT TRAFFIC SHALL BE PERMITTED WITHIN CRITICAL ROOT ZONES DURING LANDSCAPING.
- 2) LIMITS OF CRITICAL ROOT ZONE ARE BASED ON FIELD ESTIMATE AND SHOULD BE VERIFIED BY CONTRACTOR PRIOR TO CONSTRUCTION.
- 3) ALL DISTURBED AREAS SHALL BE PERMANENTLY SEEDED UNLESS PLANTED OR OTHERWISE SPECIFIED. (PS)
- 4) INSTALL DEER FENCING 3' OUTSIDE SHRUB ROOTBALL. PROVIDE WIRE GAP OPENING AS SHOWN. MAINTAIN FENCING 3 YRS. MIN.
- 5) APPLY 4"-5" WOOD CHIPS INSIDE DEER FENCING.

MATCHLINE SEE SHEET LR-402

MATCHLINE SEE SHEET LR-404



ARCADIS
 LEGAL ENTITY:
 ARCADIS U.S., INC.
 3101 WILSON BLVD., SUITE 550
 ARLINGTON, VA 22201

Gordon
 CONSULTANTS
 4501 Daily Drive
 Chantilly, VA 20151
 Phone: 703-263-1900
 www.gordon.us.com

SEALS
100% CONSTRUCTION DOCUMENTS DO NOT USE FOR CONSTRUCTION

MOUNT VERNON DISTRICT
COUNTY OF FAIRFAX, VIRGINIA
HUNTINGTON LEVEE PROJECT PHASE II
02779040.02LS

NO.	DATE	ISSUED FOR	BY
REVISIONS APPROVED BY OFFICE OF SITE DEVELOPMENT SERVICES			

COPYRIGHT: ARCADIS U.S., INC. 2012

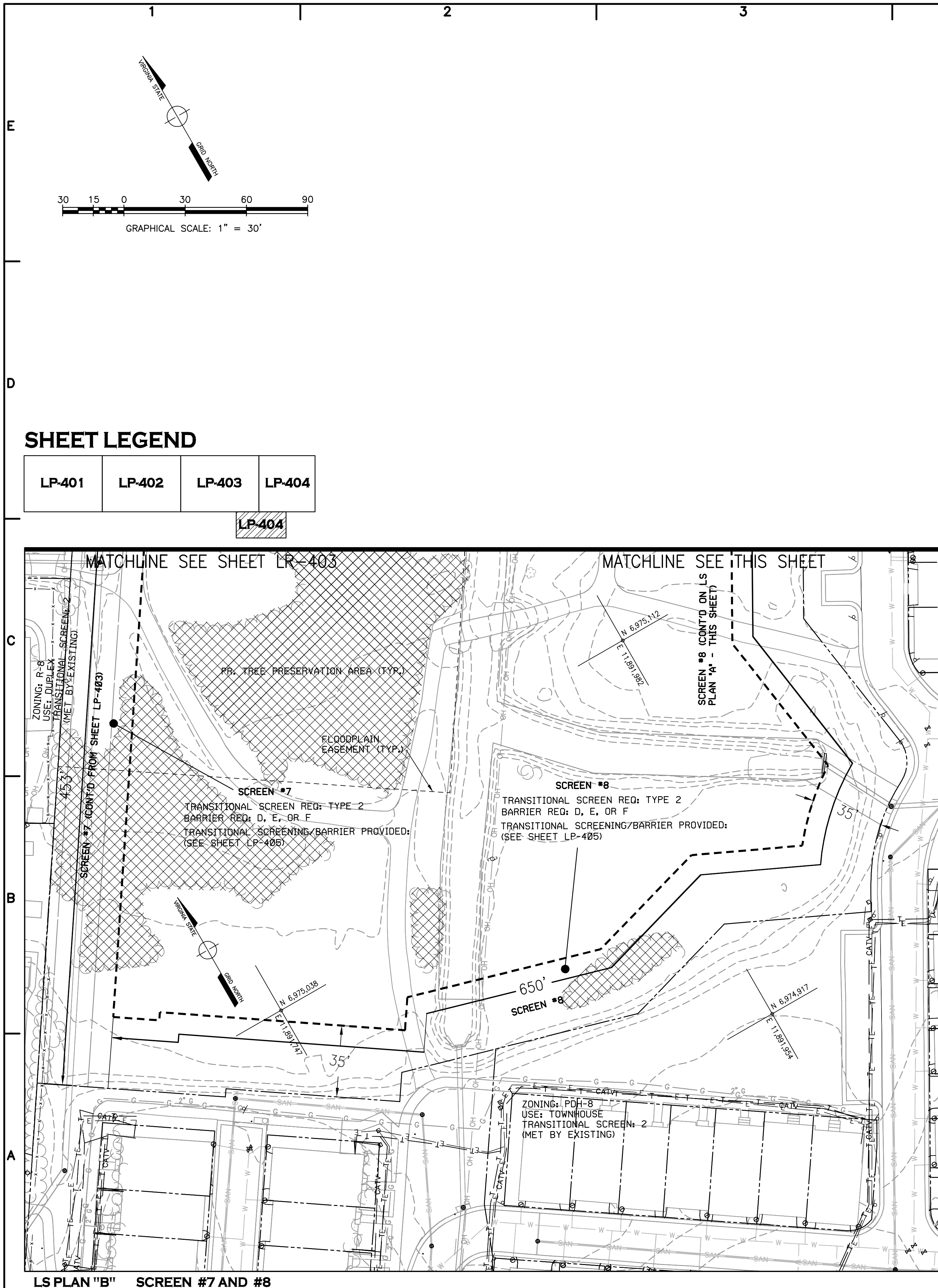
DATE: FEBRUARY 2016
 PROJECT NO.: 02779040.02LS
 FILE NAME: 0201-L-LP-401
 DESIGNED BY: W. PEART
 DRAWN BY: K. KURDZIOLEK
 CHECKED BY: J. McCLELLAN

SHEET TITLE
LANDSCAPE
PLANTING PLAN - SHEET III

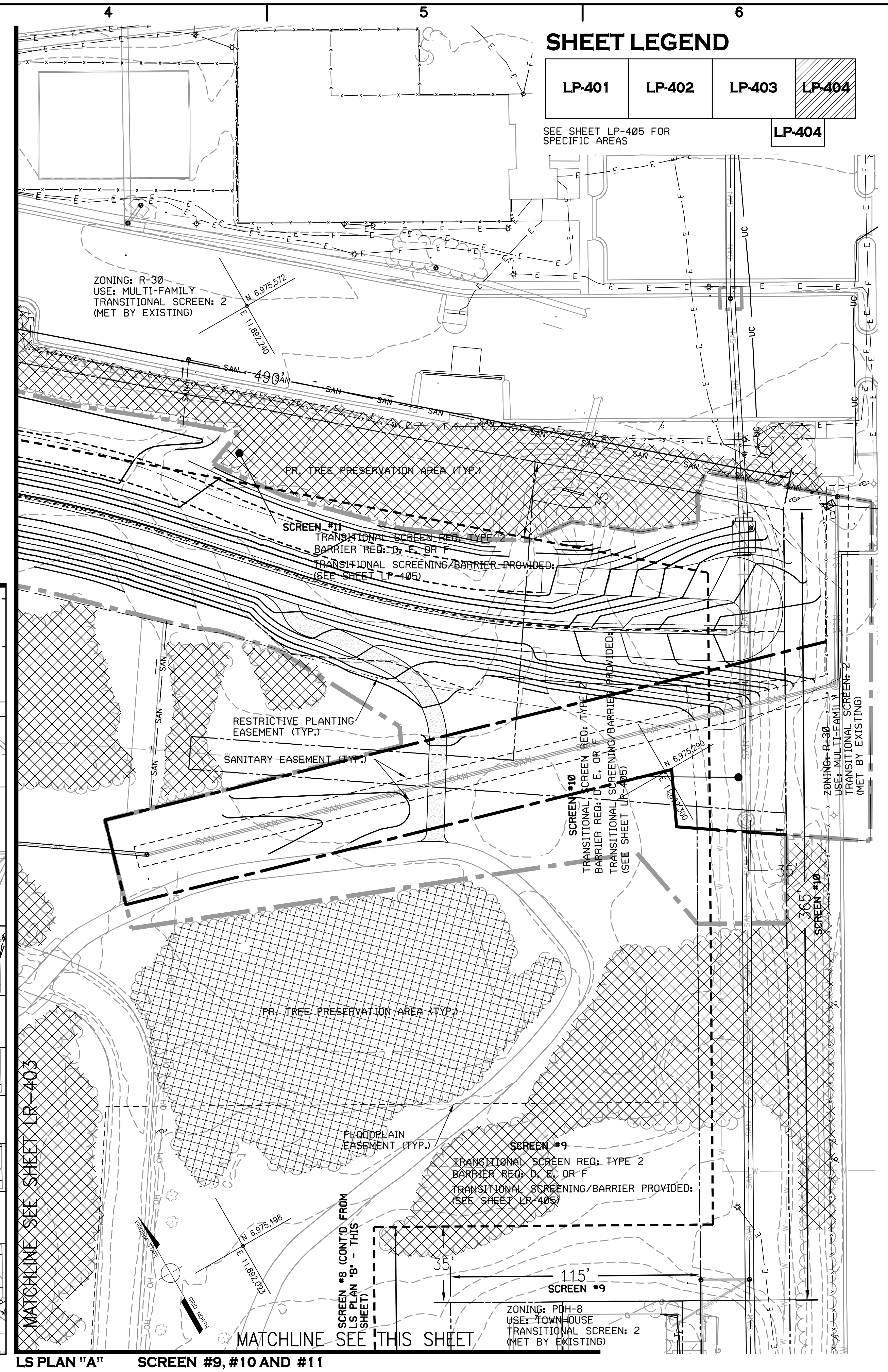
SCALE: AS SHOWN
LP-403

User: WFEART Spec: AUS-NCSMOD File: G:\PROJECT\PLANS\3018\PLANS\0201-L-LP-401.DWG Scale: 1:30 SavedDate: 4/26/2016 Time: 08:09 Plot Date: 4/26/2016 Plot: 24 : Layout: LP-403

User: AS\SRANT Spec:AUS-NGS000 File: G:\PROJECT\PLANN\3018\PLANS\0201-L-LP-401.DWG Scale: 1:30 SavedDate: 2/2/2016 Time: 09:13 Plot Date: Alex Soranti: 2/5/2016: 11:56 : Layout: LP-404



LS PLAN "B" SCREEN #7 AND #8



LS PLAN "A" SCREEN #9, #10 AND #11

SHEET LEGEND

LP-401	LP-402	LP-403	LP-404
--------	--------	--------	--------

SEE SHEET LP-405 FOR SPECIFIC AREAS

ARCADIS
 LEGAL ENTITY:
 ARCADIS U.S., INC.
 3101 WILSON BLVD., SUITE 550
 ARLINGTON, VA 22201

CONSULTANTS
Gordon
 PROGRAMMING AND PLANNING
 CIVIL ENGINEERING
 LANDSCAPE ARCHITECTURE
 SURVEY AND MAPPING
 SECURITY CONSULTING
 4501 Daly Drive
 Charlottesville, VA 20151
 Phone: 703-263-1900
 www.gordonus.com

SEALS

100% CONSTRUCTION DOCUMENTS DO NOT USE FOR CONSTRUCTION

**MOUNT VERNON DISTRICT
 COUNTY OF FAIRFAX,
 VIRGINIA
 HUNTINGTON LEVEE PROJECT
 PHASE II
 02779040.02LS**

NO.	DATE	ISSUED FOR	BY
REVISIONS APPROVED BY OFFICE OF SITE DEVELOPMENT SERVICES			

COPYRIGHT: ARCADIS U.S., INC. 2012

DATE: FEBRUARY 2016

PROJECT NO.: 02779040.02LS

FILE NAME: 0201-L-LP-401

DESIGNED BY: W. PEART

DRAWN BY: K. KURDZIOLEK

CHECKED BY: J. McCLELLAN

SHEET TITLE

**LANDSCAPE
 PLANTING PLAN -
 SHEET IV**

SCALE: AS SHOWN

LP-404