

# Springfield Community Business Center Commuter Parking Garage Public Information Hearing

## Temporary Slug Line and Parking Relocation Plan

November 18, 2020



Department of Transportation

Building Design and Construction Division



# Springfield Community Business Center Commuter Parking Garage Site Location



# Project Overview

- **Design Features**

- 6-level garage with over 1000 parking spaces
  - Adding over 700 County-owned spaces at the lot
- Two commuter slug line loading zones
  - Line A: 18-car loading zone with extra 4-car queueing capacity
  - Line B: 15-car loading zone with extra 4-car queueing capacity
- Shared slug lines and kiss-and-ride space
- Carpool waiting/short-term parking area provided on ramp
  - 10 spaces initially
  - Can be expanded

# Project Overview

- **Design Features**

- Pedestrian bridge over Old Keene Mill Road
  - Provides access to bus stops on westbound Old Keene Mill Road
  - Connects Springfield Plaza to the parking garage
- Bus transit center with 7 bus bays
- Bicycle storage, passenger waiting areas, and transit system information
- Community event spaces on ground and top level

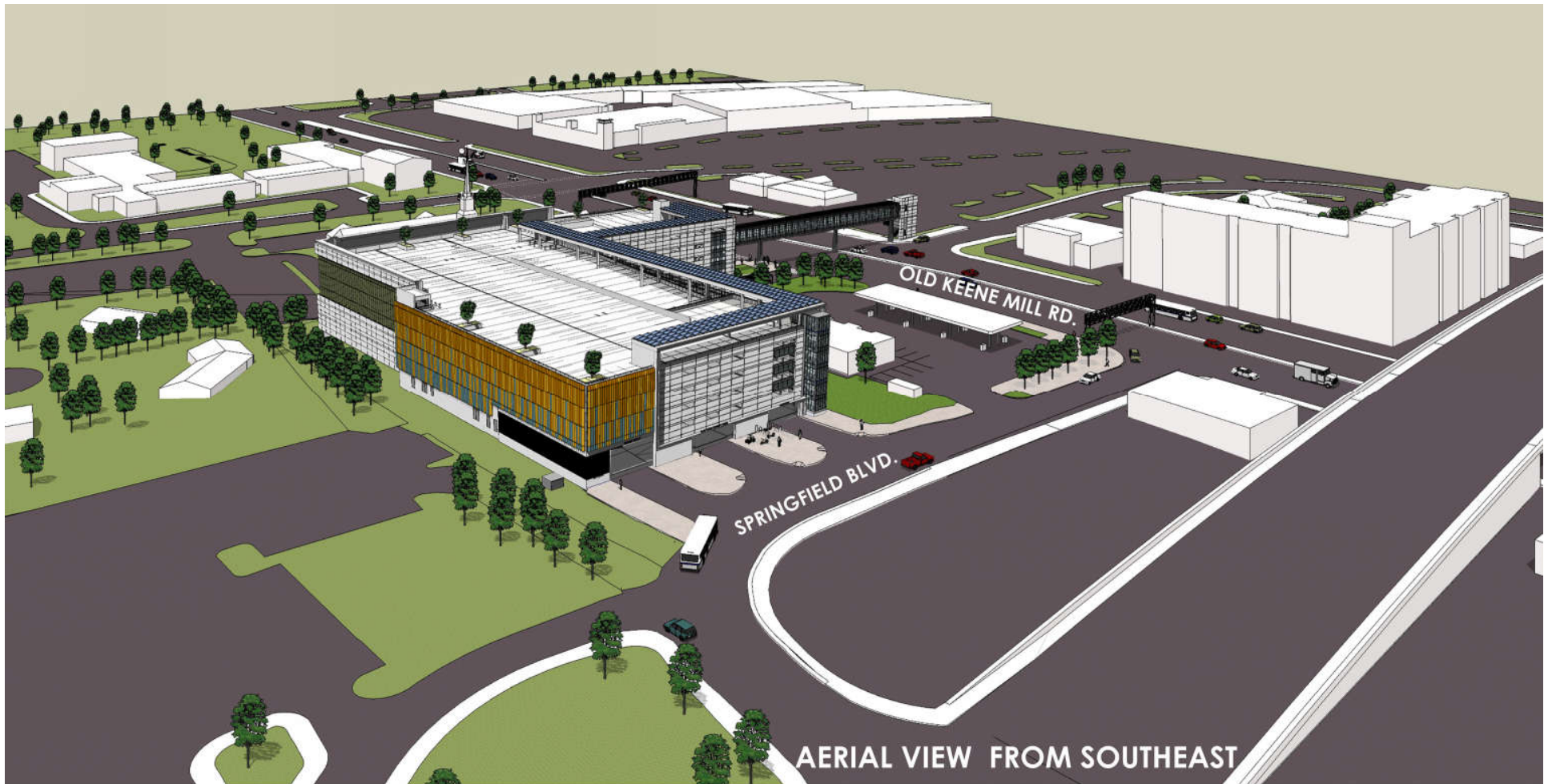


# Aerial Perspective



AERIAL VIEW FROM NORTHWEST

# Aerial Perspective



# Project Status

- **Status**

- Finalizing construction contract
- Existing lot will be closed during construction, and construction anticipated to begin around February 2021
- Garage operation anticipated to begin in Spring 2023

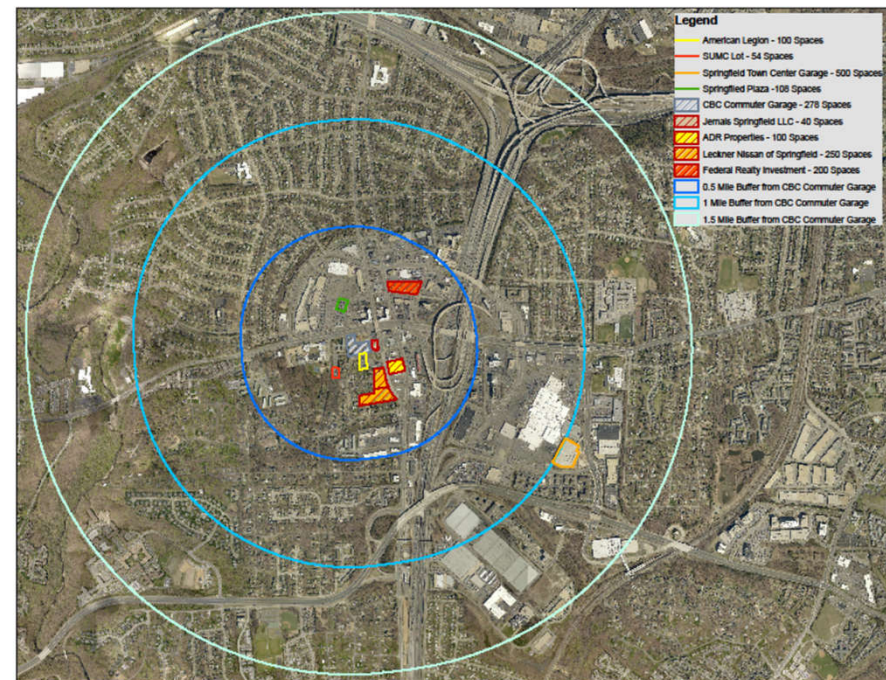


# Temporary Slug Line and Parking Relocation

- **Temporary Slug Line and Parking Relocation**

County will provide alternate locations

- 18th to 23rd, Foggy Bottom Line relocates to Springfield United Methodist Church
- 14th, L'Enfant, Navy Yard, Union Station Line relocates to Springfield Town Center Garage





# Temporary Slug Line and Parking Relocation

The 18th to 23rd, Foggy Bottom temporary slug line at Springfield United Methodist Church

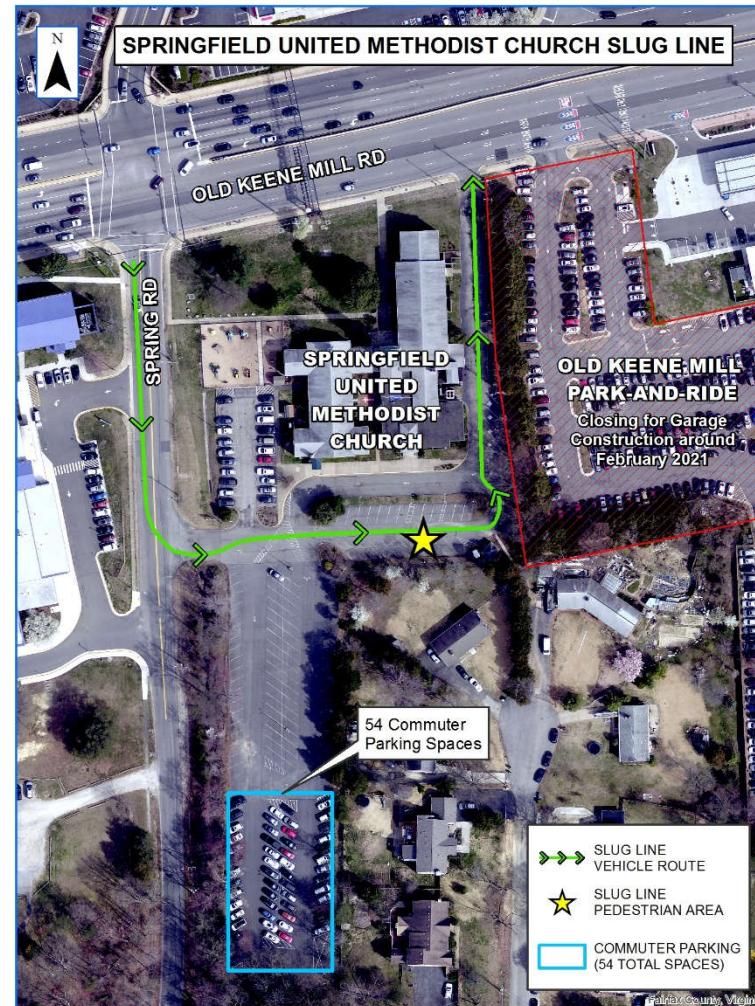
- Springfield United Methodist Church (54 spaces leased)
- American Legion (Nearby, 100 spaces leased)
- Springfield Plaza (Across Old Keene Mill Rd, 240 spaces leased)
- **394 total spaces being leased**



# Springfield Community Business Center Commuter Parking Garage Signage at the staging area

The 18th to 23rd,  
Foggy Bottom  
temporary slug line  
at Springfield  
United Methodist  
Church

- Springfield United Methodist Church (54 spaces leased)





Springfield Community Business Center Commuter Parking Garage  
**Signage at the staging area**



Parking area of the church: A-frame sign “SLUG LINES PICKUP”



Springfield Community Business Center Commuter Parking Garage  
Signage at the staging area



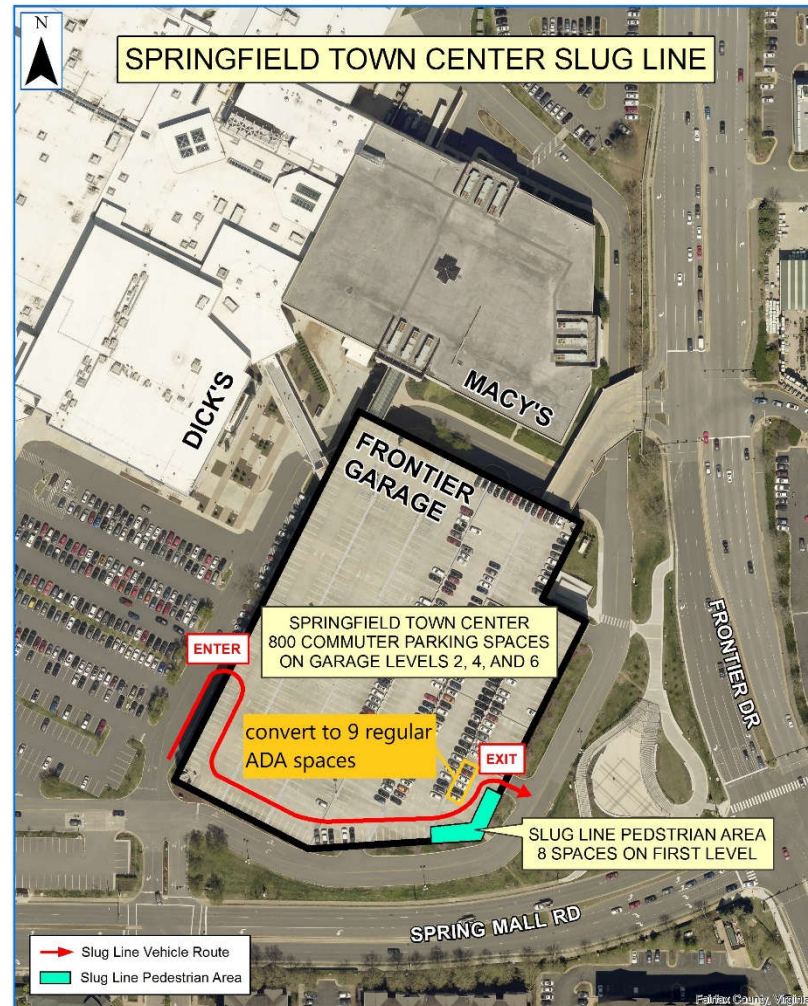
Leaving the church: Temporary A-frame sign “EXIT” initially, and then permanent metal pole sign “EXIT”



# Temporary Slug Line and Parking Relocation

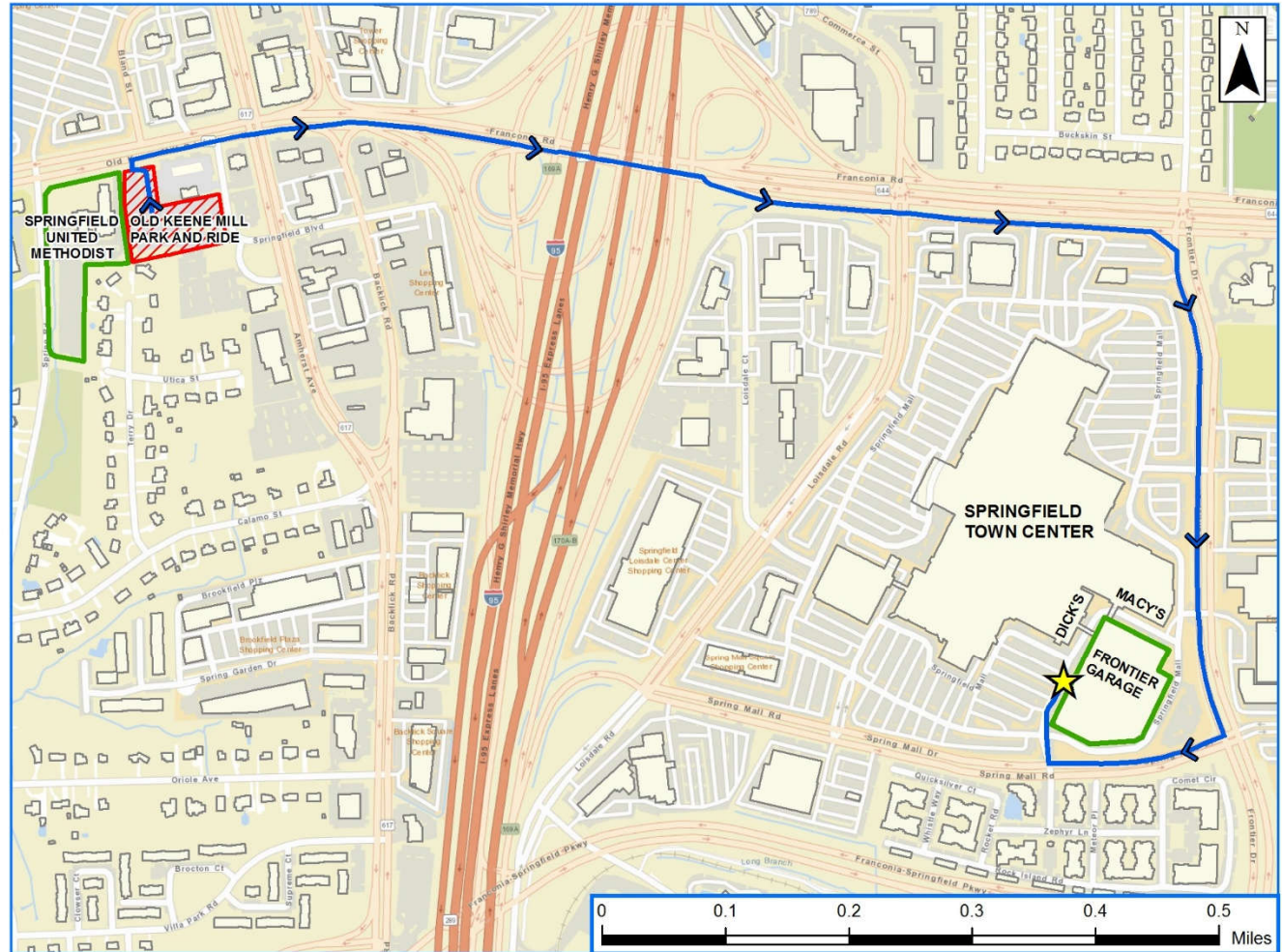
The 14th, L'Enfant, Navy Yard, Union Station temporary slug line at Springfield Town Center Garage

- Total 808 spaces leased on levels 1, 2, 4, and 6
  - 500 existing leased spaces
  - 308 new leased spaces including 8 spaces on level 1
- Slugging area on Level 1 (8 spaces )



# Temporary Slug Line and Parking Relocation

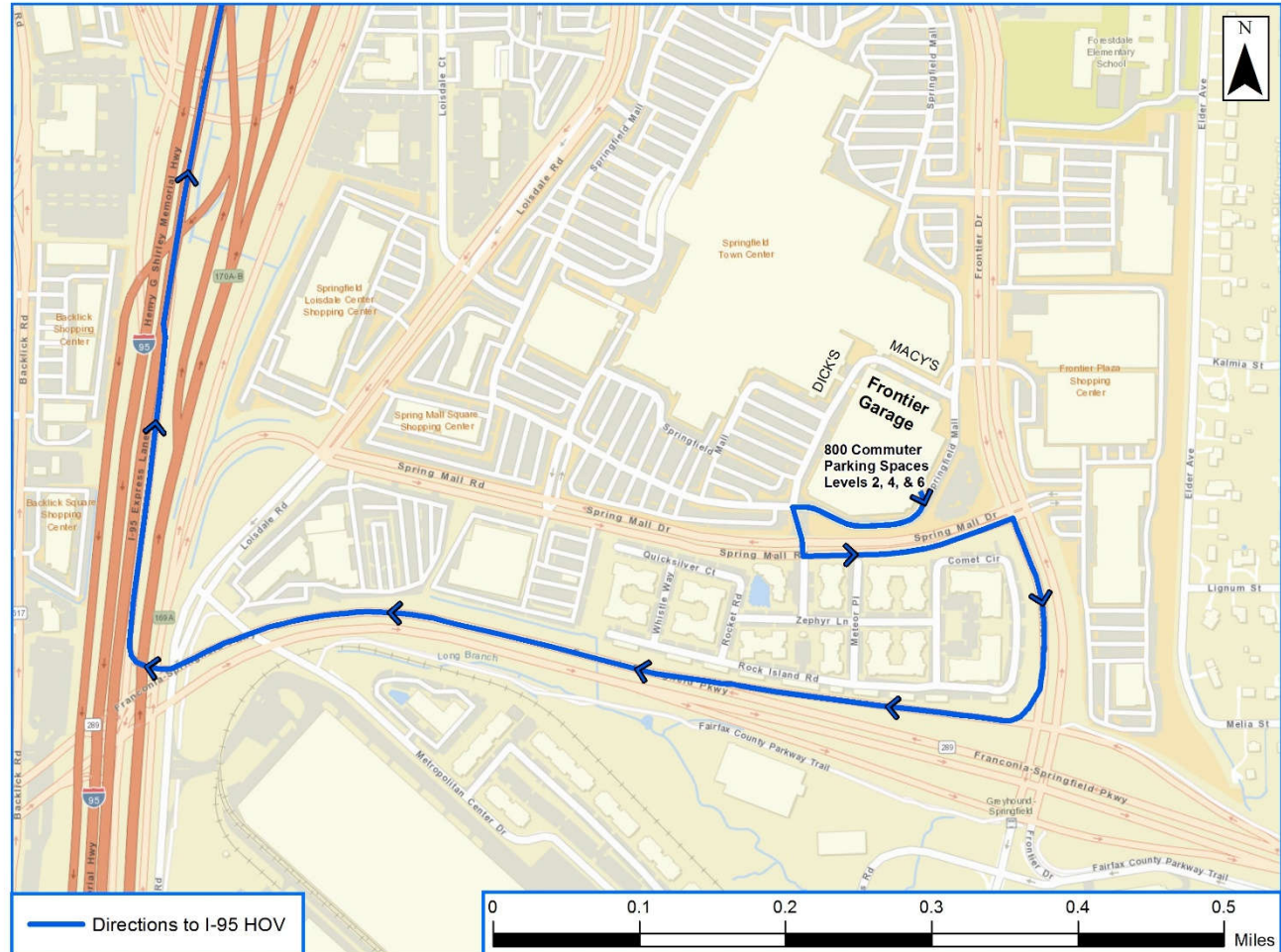
Direction from  
Old Keene Mill  
Park-and-Ride  
to Springfield  
Town Center  
Garage



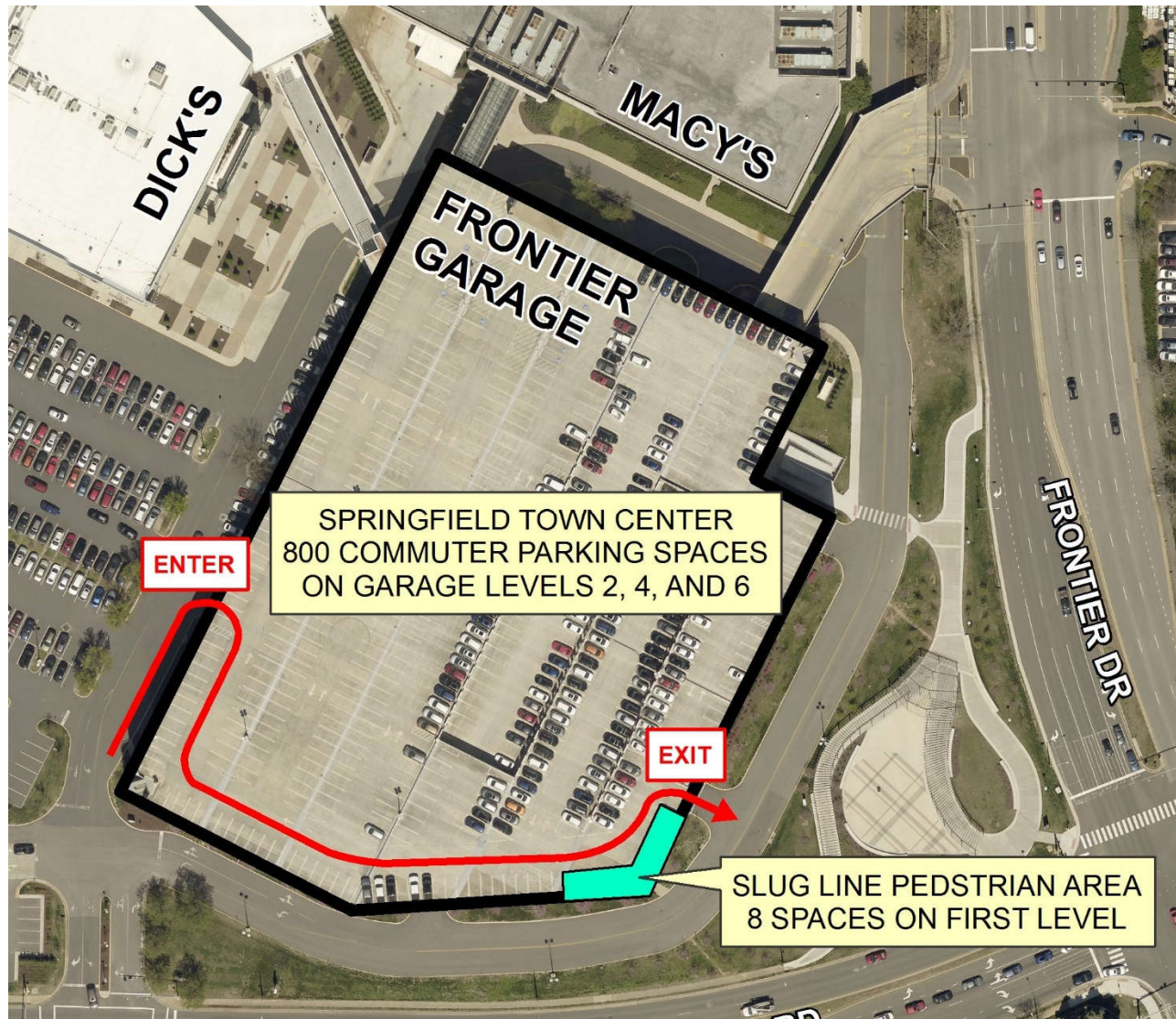


# Temporary Slug Line and Parking Relocation

Direction from  
Springfield  
Town Center  
Garage  
to  
I-95 HOV



# Springfield Community Business Center Commuter Parking Garage Signage at the staging area





# Springfield Community Business Center Commuter Parking Garage Signage at the staging area





# Springfield Community Business Center Commuter Parking Garage Signage at the staging area



**Entering from Spring Mall Drive: Two A-Frame signs temporarily (each frame will have signs on both sides)**

## Springfield Community Business Center Commuter Parking Garage Signage at the staging area



**Entering towards Spring Mall Drive:** Same two A-frame signs (each frame will have signs on both sides); Temporary A-frame signs initially, and then permanent signs



Springfield Community Business Center Commuter Parking Garage  
**Signage at the staging area**



**First Right Turn Upon Entering Garage:**  
A-frame sign

Springfield Community Business Center Commuter Parking Garage  
**Signage at the staging area**



**Inside parking garage at the stairway:**  
Temporary A-frame sign; Permanent sign  
may be mounted on column

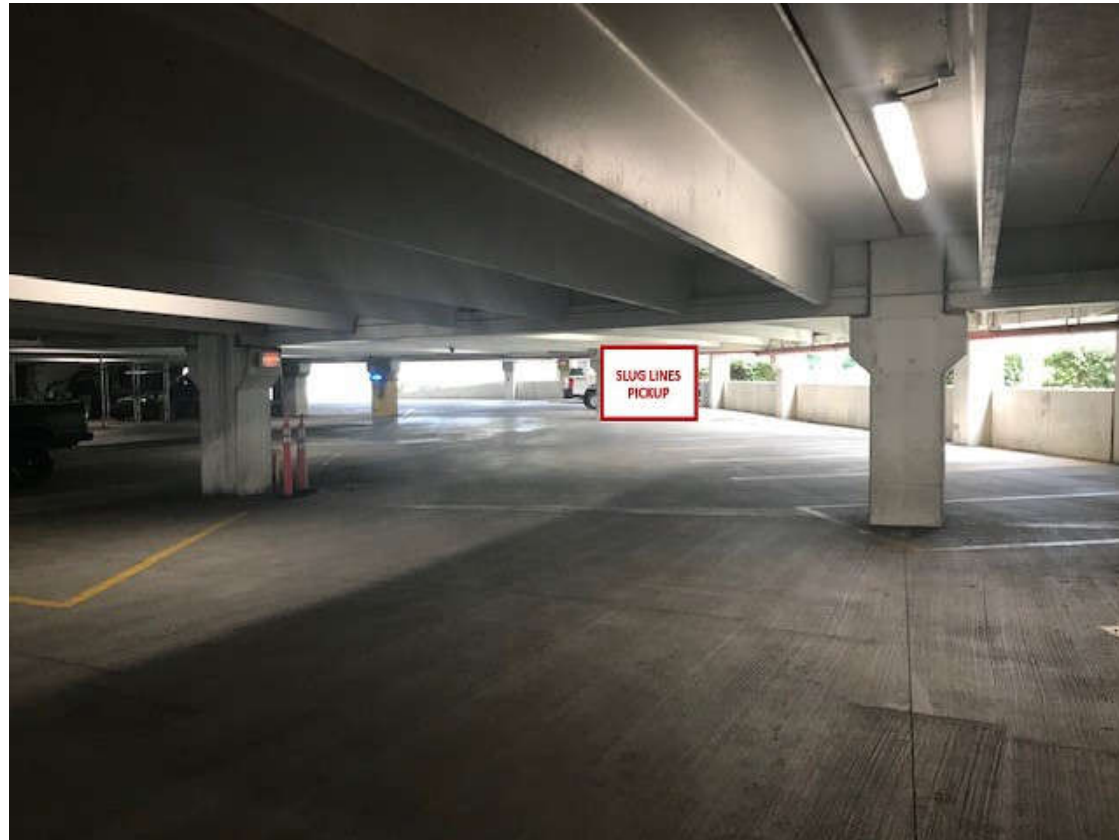


## Springfield Community Business Center Commuter Parking Garage Signage at the staging area



**Inside parking garage:** Two temporary A-frame signs;  
Two permanent signs may be mounted on columns

Springfield Community Business Center Commuter Parking Garage  
**Signage at the staging area**



**Level 1 parking garage: Slug Lines Pickup**  
(where the pickup truck is parked)



Springfield Community Business Center Commuter Parking Garage

# Signage at the staging area



## Level 1 parking garage:

- Opposite side view of Slug Lines Pickup (where the pickup truck is parked);
- Proposed ADA parking locations (9 total);
- Slug lines' exit area

# Pandemic Impact & Return of Sluggers

- **Pandemic Impact**

- Slugging activities are dramatically reduced

- **Preparation for Return of Sluggers**

- Relocation notice sign will be posted at the construction site
- Periodically monitor the usage at the two temporary locations
- Two-way communication
  - Let us know when you plan to return or know of others starting to slug
  - Visit the project website to email us  
<https://www.fairfaxcounty.gov/transportation/projects/springfield-garage>
  - Call Caijun Luo at 703-877-5600
  - Latest project updates will be posted at the website



# Questions and Answers

## Questions and Answers



To submit comments or contact us, please visit the project website via email and call Caijun Luo at 703-877-5600

<https://www.fairfaxcounty.gov/transportation/projects/springfield-garage>