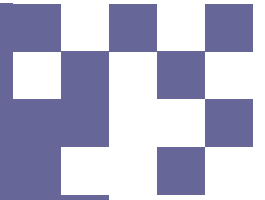


SOAPSTONE CONNECTOR



Welcome to the

PUBLIC SCOPING MEETING

Welcome! Thank you for attending tonight's Public Scoping Meeting for the Environmental Assessment (EA) of the Soapstone Connector. Preparation of the EA has been initiated by Fairfax County to improve traffic operations on Wiehle Avenue and enhance multimodal access in the vicinity of the Wiehle-Reston East Metrorail Station. This undertaking is a collaborative effort among Fairfax County, the Virginia Department of Transportation, and the Federal Highway Administration. Tonight is your opportunity to provide suggestions and comments to help define the scope of the study:

- Tell us about transportation problems in the Wiehle Avenue corridor within the study area.
- Consider both existing and future conditions within the study area (for example: travel patterns/modes not adequately served, travel demands of future growth, safety issues).
- Give us suggestions for solving those problems.
- Tell us what issues, environmental resources, or other factors are most important to you and should receive the greatest consideration in the study.

Please take the time to examine the information provided, ask as many questions as you wish, and give us your comments and suggestions. Your input is needed as part of the environmental review process and it is important.

Comment sheets are available for written comments. All comments received will be reviewed and considered by the project study team.

Thank you for attending!

SOAPSTONE CONNECTOR



PURPOSE AND NEED

Current Conditions:

- The transportation network around the Wiehle-Reston East Metrorail Station is comprised primarily of major roadways (i.e., Wiehle Avenue, Sunset Hills Road, and Sunrise Valley Drive) and much smaller streets and driveways that provide access to individual buildings and developments.
- The current roadway network provides for two crossings of the Dulles Corridor on either side of the Wiehle-Reston East Metrorail Station.
- Vehicles traveling within the area, traveling to and from the Wiehle-Reston East Metrorail Station, and entering and leaving the Dulles Corridor all compete for the same road space on Wiehle Avenue.

Purpose:

- The anticipated purpose of the project would be to provide additional multimodal capacity on a new north-south alternative in order to mitigate congestion on Wiehle Avenue.

Factors to be Considered in Defining and Documenting Transportation Need:

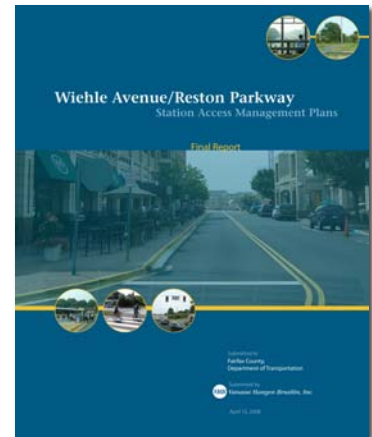
- Projected traffic demand for the Wiehle Avenue corridor.
- Bottlenecks along Wiehle Avenue at the intersections with Sunset Hills Road and Sunrise Valley Drive.
- Provision of direct access for buses across the Dulles Corridor and to the Wiehle-Reston East Metrorail Station without requiring travel on Wiehle Avenue.
- Improved connectivity for pedestrians and bicyclists to the Wiehle-Reston East Metrorail Station, from Soapstone Drive and Sunrise Valley Drive on the south and Sunset Hills Road and the Washington and Old Dominion (W&OD) Trail on the north.

SOAPSTONE CONNECTOR

PROJECT HISTORY

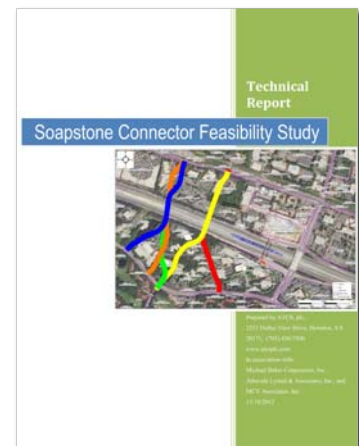
2008 Wiehle Avenue/Reston Parkway Station Access Management Plans Final Report, April 2008

- Initiated to consider the current status and future needs in the vicinity of the two Metrorail stations proposed for the Reston area at Reston Parkway and Wiehle Avenue.
- Study recommendations included increased roadway capacity, travel demand management (TDM) strategies, additions to the network of pedestrian paths, and spot safety improvements.
- Soapstone Connector was included in the list of recommended roadway projects.
- Recommendations were divided into three groups based on date of implementation; Soapstone Connector included in the first group that would be required at the opening of the Wiehle Avenue station.

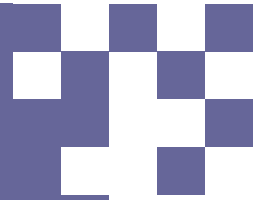


Soapstone Connector Feasibility Study, November 2013

- Assessed the engineering feasibility of a multimodal roadway that would provide a connection for motorists, pedestrians and bicyclists, and transit vehicles between Sunset Hills Road and Sunrise Valley Drive.
- Identified and screened multiple alternative alignments to narrow down the list to a limited number of feasible candidate alternatives.
- Conducted a more detailed evaluation of the short list of alternatives and assessed the alternatives in terms of traffic, environmental, land use, and engineering criteria.
- Conducted a type, size and location (TS&L) analysis of a new bridge over the Dulles Corridor and identified the most promising alignment for the Soapstone Connector.



SOAPSTONE CONNECTOR

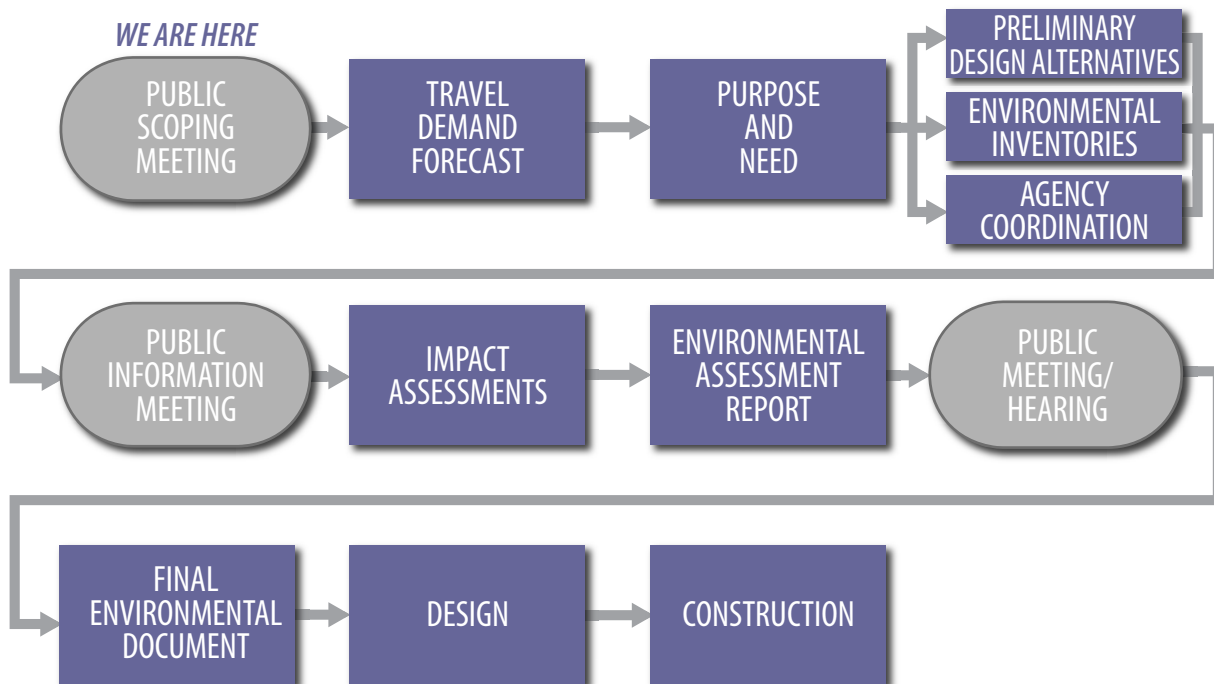


ENVIRONMENTAL REVIEWS

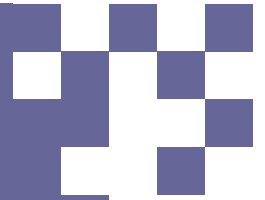
The National Environmental Policy Act (NEPA) requires consideration of potential environmental consequences of transportation improvements, documentation of the analyses, and making the information available to the public for comment before implementation.

Tonight's meeting is a critical element in the project's initial scoping process whereby public input is gathered to help identify viable courses of action for meeting the identified travel needs and recognize the area's environmental context.

There will be two future opportunities/meetings for public review and comment on preliminary design alternatives and impacts assessment.



SOAPSTONE CONNECTOR



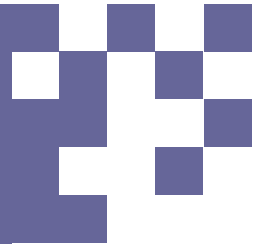
ENVIRONMENTAL CONSIDERATIONS

Some resources/issues to be studied include:

- Land Use and Development
- Impacts to Communities
- Historic and Archaeological Resources
- Parklands and Recreation Areas
- Traffic and Safety
- Wetlands
- Topography/Landscape
- Noise
- Water Quality
- Air Quality
- Hazardous Materials
- Cumulative Impacts
- Indirect Impacts



SOAPSTONE CONNECTOR

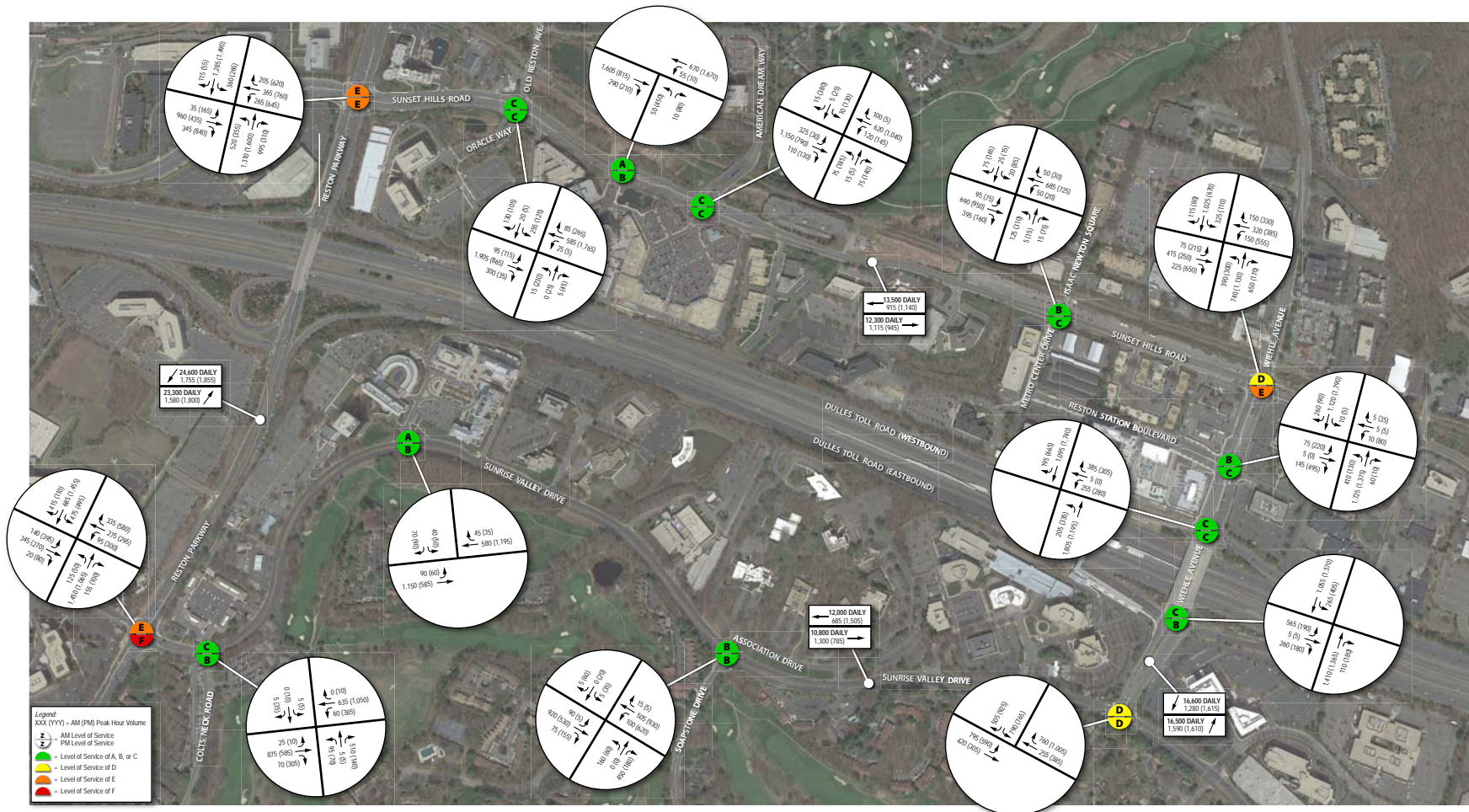


IMPROVEMENT OPTIONS

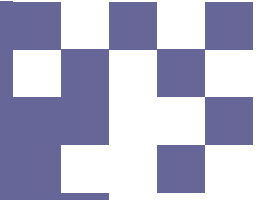


SOAPSTONE CONNECTOR

TRAFFIC COUNTS & LEVEL OF SERVICE



SOAPSTONE CONNECTOR



PUBLIC COMMENTS

Thank You!

Thank you for taking the time to review the materials presented at this public meeting. Your comments are valuable and greatly appreciated. Fairfax County will carefully consider all comments received at this meeting and during the comment period.

Written comments must be postmarked or sent electronically no later than **November 6, 2015** and may be submitted in three ways:

At this Meeting:

Put written comments in the designated box.

By Mail:

Submit written comments to:

Audra K. Bandy, P.E.

Project Manager

Fairfax County Department of Transportation

4050 Legato Road, Suite 400

Fairfax, VA 22033

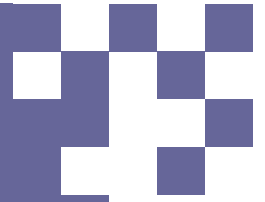
By E-mail:

Send e-mails to:

audra.bandy@fairfaxcounty.gov

All comments submitted at this meeting and during the comment period will be incorporated in the meeting record, which is subject to public review.

SOAPSTONE CONNECTOR



SCHEDULE AND NEXT STEPS

Project Schedule

Project Scoping	Ongoing
Data Collection	Ongoing
Alternatives Development / Citizen Information Meeting	Spring 2016
Draft Environmental Assessment / Citizen Information Meeting	Summer 2016
Final Decision on the Environmental Assessment by FHWA	Fall 2016

Next Steps

- Study team review of public comments.
- Evaluation of suggestions and concerns and formulation of project purpose and need.
- Development of alternatives and assessment of environmental impacts.
- Preparation of Draft Environmental Assessment (EA).
- Revision of EA, as appropriate, to reflect changes or new information resulting from comments received on the EA.

For Project Updates

Please visit Fairfax County's website,
<http://www.fairfaxcounty.gov/fcdot/soapstoneconnector.htm>