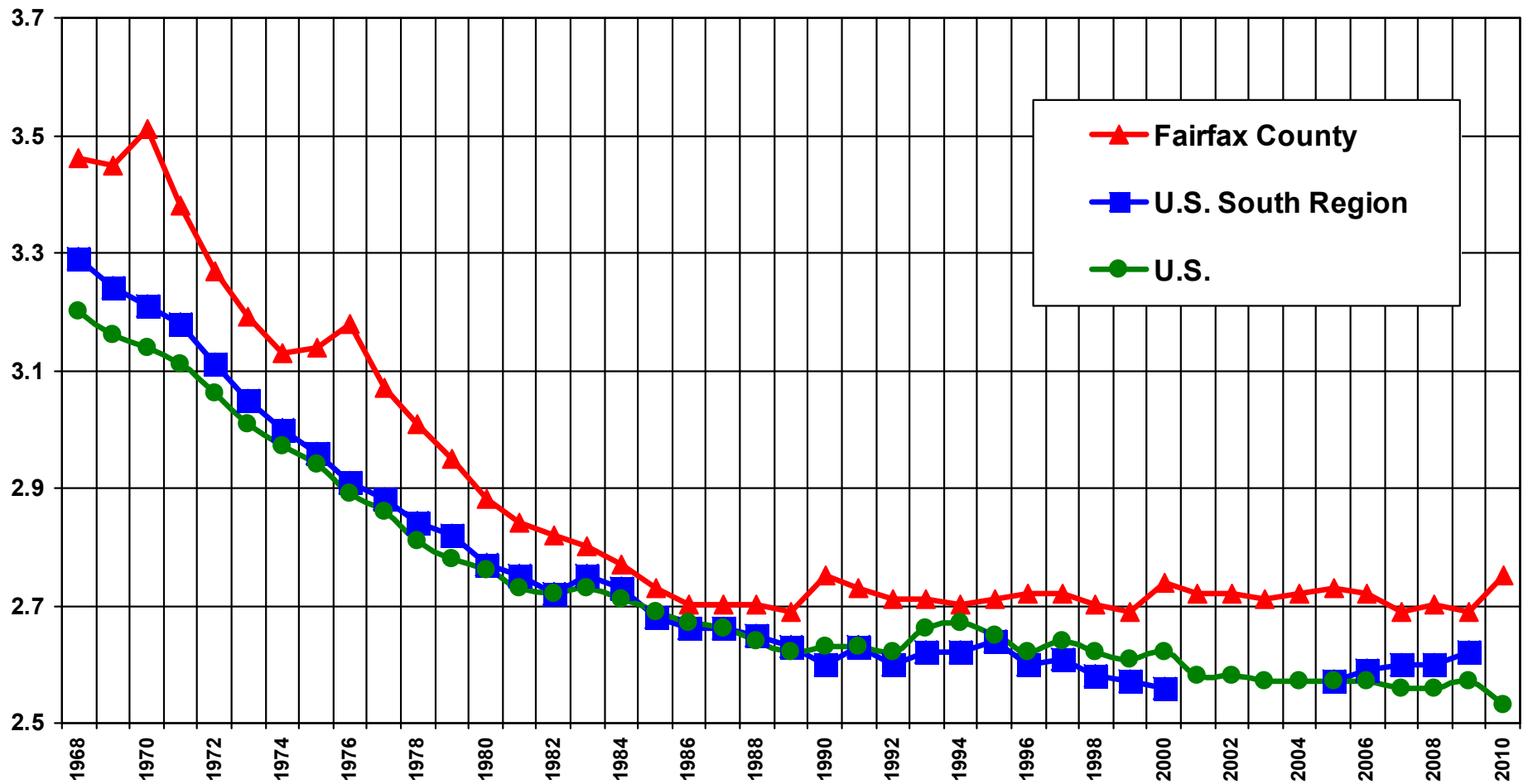


FIGURE 3.1
Average Persons per Household
Fairfax County, U.S. South Region, and the U.S. 1968 through 2010



Sources: U.S. Bureau of the Census; Fairfax County Department of Neighborhood and Community Services, 2010.

Note: U.S. Bureau of the Census did not compute U.S. South Region's average household size for the years 2001 through 2004. 2010 data is not available for U.S. South Region at the time of this report. 2010 data for the U.S. are projected.