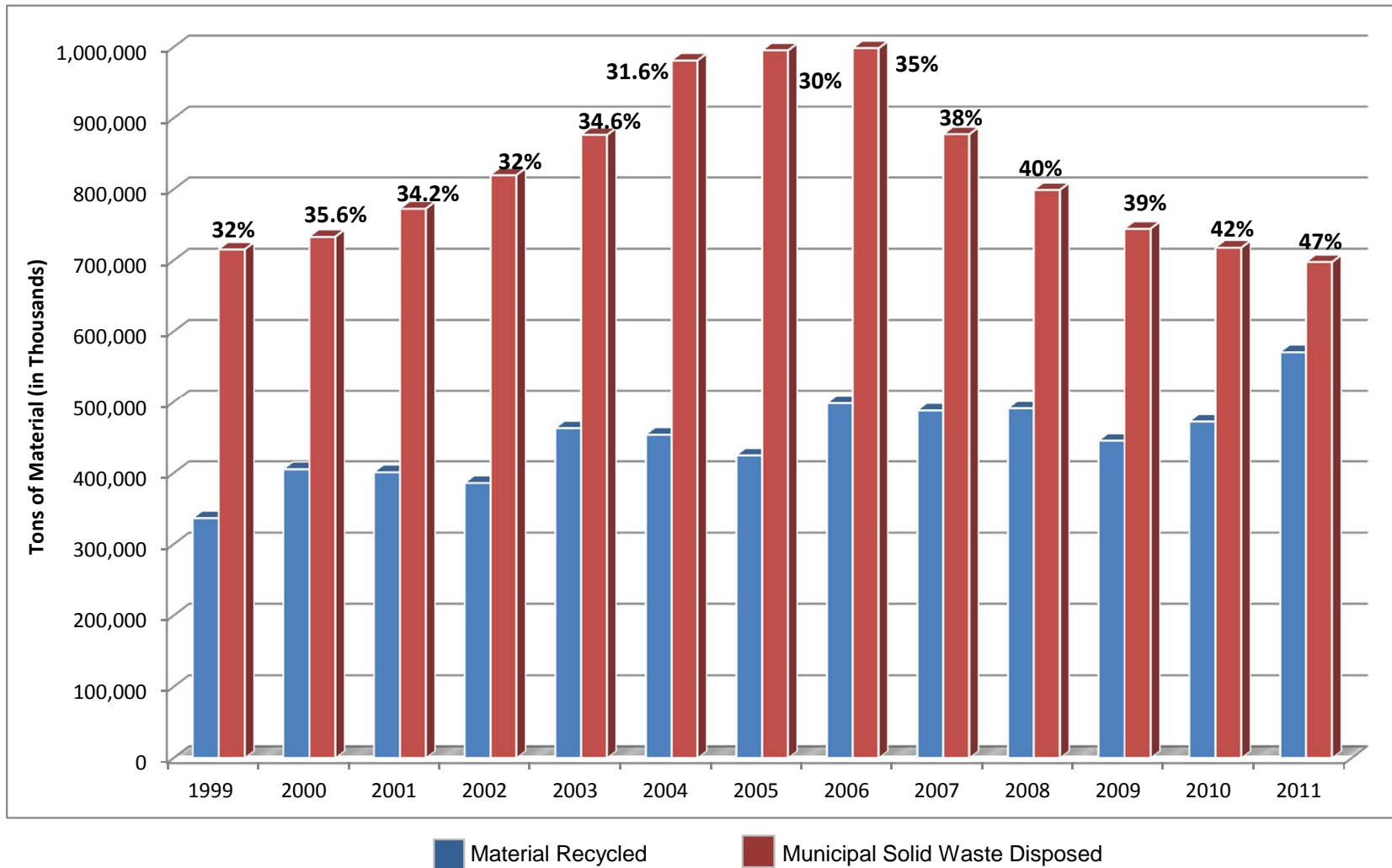


## Annual Recycling Rate



The annual recycling rate is calculated by comparing the material recycled to the municipal solid waste generated. The technique for calculating the annual recycling rate is defined in Virginia's administrative code, 9VAC20-130-125B. Fairfax County includes a 2% credit for having a source reduction program, as allowed by 9VAC20-130-125C(4).

For calendar year 1999 recycling was 336,921 tons, and the municipal solid waste disposed of was 715,645 tons, recycling rate was 32 percent; Year 2000 recycling was 405,539 tons and the municipal solid waste disposed of was 733,340 tons. Recycling rate was 35.6 percent; Year 2001 recycling was 401,368 tons and the municipal solid waste disposed of was 772,817 tons. Recycling rate was 34.2 percent; Year 2002 recycling was 386,019 tons and the municipal solid waste disposed of was 820,096 tons. Recycling rate was 32 percent; Year 2003 recycling was 463,042 tons and the municipal solid waste disposed of was 876,482 tons. Recycling rate was 34.6 percent; Year 2004 recycling was 454,046 tons and the municipal solid waste disposed of was 981,389 tons. Recycling rate was 31.6 percent; Year 2005 recycling was 424,927 tons and the municipal solid waste disposed of was 995,457 tons. Recycling rate was 30 percent; Year 2006 recycling was 497,578 tons and the municipal solid waste disposed of was 998,588 tons. Recycling rate was 35 percent; Year 2007 recycling was 488,240 tons and the municipal solid waste disposed of was 877,364 tons. Recycling rate was 38 percent; Year 2008 recycling was 491,113 tons and the municipal solid waste disposed of was 799,216 tons. Recycling rate was 40 percent; Year 2009 recycling was 445,625 tons and the municipal solid waste disposed of was 744,682 tons. Recycling rate was 39 percent; Year 2010 recycling was 472,646 tons and the municipal solid waste disposed of was 717,963 tons. Recycling rate was 42 percent. Year 2011 recycling was 571,116 tons and the municipal solid waste disposed of was 697,763. Recycling rate was 47 percent.