




FAIRFAX COUNTY PARK AUTHORITY



M E M O R A N D U M

TO: Chairman and Members
Park Authority Board

VIA: John W. Dargle, Jr., Director 

FROM: Todd Johnson, Director
Park Operations Division

DATE: March 19, 2009

Agenda

**Park Operations Committee
Wednesday, March 25, 2009 – 5:45 p.m.
Board Room – Herrity Building
Chairman: George Lovelace**

1. Mastenbrook Volunteer Matching Fund Grant Program Request – Belle Haven Citizens Association – Fort Willard Historic Site – Action* (this item is also going to the full Board on 3/25/09)

*Enclosures



If accommodations and/or alternative formats are needed, please call (703) 324-8563. TTY (703) 803-3354

This page was intentionally left blank.

Board Agenda Item
March 25, 2009

ACTION

Mastenbrook Volunteer Matching Fund Grant Program Request – Belle Haven Citizens Association – Fort Willard Historic Site (Mount Vernon District).

ISSUE:

Approval of a Mastenbrook Volunteer Matching Fund Grant Program request from Belle Haven Citizens Association in the amount of \$10,000 for park and landscape improvements at Fort Willard Historic Site.

RECOMMENDATION:

The Park Authority Director recommends approval of the Mastenbrook Volunteer Matching Fund Grant Program request from Belle Haven Citizens Association in the amount of \$10,000 for park and landscape improvements at Fort Willard Historic Site.

TIMING:

Board action is requested on March 25, 2009, in order to award the grant.

BACKGROUND:

On February 28, 2007, the Board approved the Master Plan for Fort Willard Historic Site. The Fort Willard Historic Site preserves and protects a Civil War era fortification that exists on a majority of the parkland. The remaining portions of the parkland are not part of the historic preservation area and act as a buffer between the preservation area and Fort Willard Circle, a street which surrounds the entire site.

Subsequent to the approval of the site Master Plan, the Belle Haven Citizens Association (BHCA) submitted a plan to the Park Authority for improving the non-preservation portion of the site. Staff reviewed the plan and found that it was in conformance with the Master Plan for the site, and has been working with the BHCA to plan for development of the site based upon the proposed improvements. The proposed improvements include adding new park benches and trash cans, installing new landscaping, installing trails and a plaza area, and re-establishment of grass in the remaining non-developed areas.

The BHCA has agreed to enter into an Adopt-A-Park agreement to maintain the new landscaping as well as fund major repairs and replacement of the new benches and trash cans as needed.

Board Agenda Item
March 25, 2009

Staff from the Planning and Development and Park Operations Divisions will manage the project. Matching funds are available to complete this project.

FISCAL IMPACT:

The estimated total project cost is \$41,300. Funds are currently available in the amount of \$10,000 in Project 475504, Community Parks/Courts in Fund 370, Park Authority Bond Construction, and in the amount of \$31,300 from the Belle Haven Citizens Association resulting in total available funding of \$41,300.

Contingent on the approval of this project, the remaining balance in the Mastenbrook Volunteer Matching Fund Grant Program will be \$45,038. These monies are in addition to the \$485,000 that was approved for use with the Mastenbrook Volunteer Matching Grant Program as part of the 2008 Bond.

ENCLOSED DOCUMENTS:

Attachment 1: Mastenbrook Volunteer Matching Fund Grant Program Request – Belle Haven Citizens Association

Attachment 2: Presentation to the Park Authority

Attachment 3: Fort Willard Historic Site Conceptual Development Plan

STAFF:

John W. Dargle, Jr., Director

Cindy Messinger, Deputy Director/COO

Todd Johnson, Director, Park Operations Division

Dave Bowden, Director, Planning and Development Division

Cindy Walsh, Director, Resource Management Division

Dan Sutherland, Manager, Grounds Management Branch

Kelly Davis, Project Manager, Special Projects Branch

Joe Nilson, Manager, Area 3 Management



Mastenbrook Volunteer Matching Fund Grants Program Application Form

PLEASE PRINT. Please provide all information requested. You may attach additional sheets and/or materials to support your request.

1. Grantee Information

Name of Individual or Organization:	Belle Haven Citizens Association
Contact Person:	Caulley Deringer
Mailing Address:	6226 Fort Willard Circle
	Alexandria, VA 22307
Phone:	703-749-9415
Fax:	703-734-2837
Email:	caulley.deringer@transwestern.net

2. Project

Title: Ft Willard Outer Circle

3. Funding Requested

Amount \$ 10,000.00

(Applicant may request up to a maximum of \$10,000 per project. Limited to one approved project per fiscal year.)

4. Project Description

Provide a description of your project. (Attach drawings or specification of *materials*/proposed for purchase. If *educational materials* are proposed, provide a mock up or example of how the product will look, how it will be posted or distributed, and an example of the content. Provide a detailed map and other visual materials, site plan, drawings, photos, cross sections or a mock up of your project and what the finished product will look like.) Provide as much detail as you can to help evaluators clearly understand your project.

The Ft. Willard Outer Circle is focussed on the beautification and landscape preservation of the area outside the wood fence surrounding Ft. Willard Circle. Benches, trash cans and new plantings to include trees, shrubs and re-establishment of grass will be included in the scope of work. Attached is a color rendering of the proposed changes. The BHCA contracted with a professional design firm to prepare a landscape plan for the outer circle area. Staff reviewed the plan and found that it is in general conformance with the Master Plan. The master plan was approved by the Park Authority Board in 2007.

The Fort Willard Historic Site preserves and protects a Civil War era fortification that was part of the Federal perimeter defense forts that encircled the Nation's Capital.

5. Public Benefits

Explain why your project is important and why it is needed. Who are the intended users? How will the public benefit? How many and what different types of users do you expect? How does this project provide new recreational opportunities for the intended users? Does your project solve a problem or provide important missing services? If your project provides for people with disabilities, in what way?

This Project will serve many benefits to the local community by adding physical beauty to a County resource that has been essentially unkept for many years. The improved exterior will provide an attractive first impression for those visitors arriving to tour Ft. Willard's interior. Additionally, the local neighborhood and visitors will enjoy the seating areas and main gathering area for community events.

The users are the occupants of the surrounding Belle Haven neighborhood and all those who visit Ft. Willard.

A handicap curb cut will be provided to allow access to the park site area that faces Woodmont Rd. allowing access to all.

6. Sponsor Commitment

What experience do you or the organization have in accomplishing similar projects? Who will be responsible for organizing and assigning the work to insure successful project completion? You will need to document all project expenditures. What is your plan for documenting the work (photographs, video, written documentation, etc.)? What is your plan, if any, for long term maintenance of your project after it is completed?

Other than the normal maintenance and upkeep provided by the Park Authority, maintenance will be performed by a contract with a professional landscaping company. This contract will be overseen by the Belle Haven Citizens Association, a 400 member strong organization that receives income from annual dues. The Association is governed by a 12-member board who will oversee implementation and funding for the maintenance plan.

This will be done through an Adopt-A-Park agreement with the Fairfax County Park Authority.

7. Proposed Budget

You will need to provide a detailed and complete budget. Provide enough detail for evaluators to understand exactly what grant funds will be used for, how you arrived at the prices for services, labor, materials, equipment, etc. and the same level of detail about the amount and source of matching funds.

We have been working with the Park Authority on this project and have collectively drawn up a budget for all aspects of it. Please see the attached for the itemized budget.

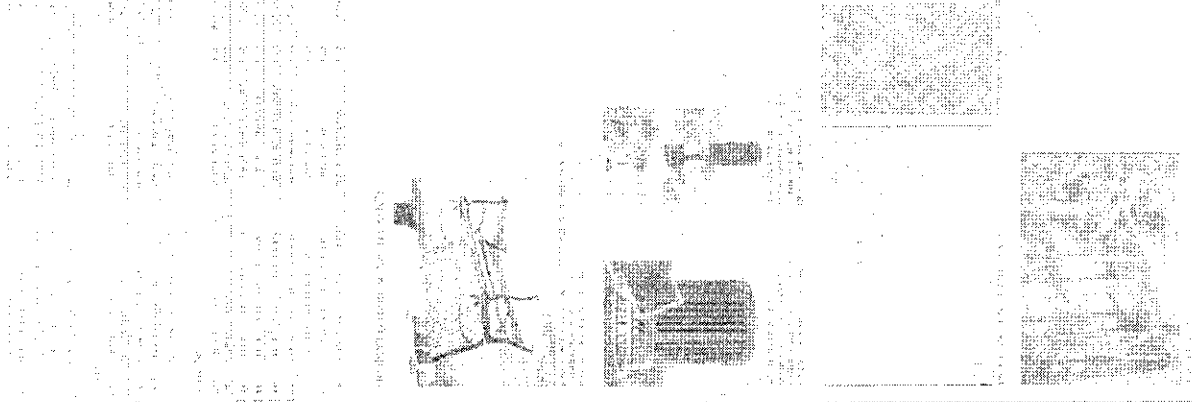
Please check one of the following:

The Park Authority prefers to reimburse grantees after the work is completed. However, please note that projects that were begun or completed prior to Park Authority approval are ineligible for funding.

- We understand payment by the Park Authority will occur after we complete the project.
 We must have the Park Authority grant funds prior to beginning the project.

J. Cautley Ramirez
Signature

11/24/08
Date



- 1. 8" x 8" brick pavers
- 2. 4" x 8" brick pavers
- 3. 2" x 4" brick pavers
- 4. 1" x 2" brick pavers
- 5. 1/2" x 1" brick pavers
- 6. 1/4" x 1/2" brick pavers
- 7. 1/8" x 1/4" brick pavers
- 8. 1/16" x 1/8" brick pavers
- 9. 1/32" x 1/16" brick pavers
- 10. 1/64" x 1/32" brick pavers
- 11. 1/128" x 1/64" brick pavers
- 12. 1/256" x 1/128" brick pavers
- 13. 1/512" x 1/256" brick pavers
- 14. 1/1024" x 1/512" brick pavers
- 15. 1/2048" x 1/1024" brick pavers
- 16. 1/4096" x 1/2048" brick pavers
- 17. 1/8192" x 1/4096" brick pavers
- 18. 1/16384" x 1/8192" brick pavers
- 19. 1/32768" x 1/16384" brick pavers
- 20. 1/65536" x 1/32768" brick pavers
- 21. 1/131072" x 1/65536" brick pavers
- 22. 1/262144" x 1/131072" brick pavers
- 23. 1/524288" x 1/262144" brick pavers
- 24. 1/1048576" x 1/524288" brick pavers
- 25. 1/2097152" x 1/1048576" brick pavers
- 26. 1/4194304" x 1/2097152" brick pavers
- 27. 1/8388608" x 1/4194304" brick pavers
- 28. 1/16777216" x 1/8388608" brick pavers
- 29. 1/33554432" x 1/16777216" brick pavers
- 30. 1/67108864" x 1/33554432" brick pavers
- 31. 1/134217728" x 1/67108864" brick pavers
- 32. 1/268435456" x 1/134217728" brick pavers
- 33. 1/536870912" x 1/268435456" brick pavers
- 34. 1/1073741824" x 1/536870912" brick pavers
- 35. 1/2147483648" x 1/1073741824" brick pavers
- 36. 1/4294967296" x 1/2147483648" brick pavers
- 37. 1/8589934592" x 1/4294967296" brick pavers
- 38. 1/17179869184" x 1/8589934592" brick pavers
- 39. 1/34359738368" x 1/17179869184" brick pavers
- 40. 1/68719476736" x 1/34359738368" brick pavers
- 41. 1/137438953472" x 1/68719476736" brick pavers
- 42. 1/274877906944" x 1/137438953472" brick pavers
- 43. 1/549755813888" x 1/274877906944" brick pavers
- 44. 1/1099511627776" x 1/549755813888" brick pavers
- 45. 1/2199023255552" x 1/1099511627776" brick pavers
- 46. 1/4398046511104" x 1/2199023255552" brick pavers
- 47. 1/8796093022208" x 1/4398046511104" brick pavers
- 48. 1/17592186044416" x 1/8796093022208" brick pavers
- 49. 1/35184372088832" x 1/17592186044416" brick pavers
- 50. 1/70368744177664" x 1/35184372088832" brick pavers
- 51. 1/140737488355328" x 1/70368744177664" brick pavers
- 52. 1/281474976710656" x 1/140737488355328" brick pavers
- 53. 1/562949953421312" x 1/281474976710656" brick pavers
- 54. 1/1125899906842624" x 1/562949953421312" brick pavers
- 55. 1/2251799813685248" x 1/1125899906842624" brick pavers
- 56. 1/4503599627370496" x 1/2251799813685248" brick pavers
- 57. 1/9007199254740992" x 1/4503599627370496" brick pavers
- 58. 1/18014398509481984" x 1/9007199254740992" brick pavers
- 59. 1/36028797018963968" x 1/18014398509481984" brick pavers
- 60. 1/72057594037927936" x 1/36028797018963968" brick pavers
- 61. 1/144115188075855872" x 1/72057594037927936" brick pavers
- 62. 1/288230376151711744" x 1/144115188075855872" brick pavers
- 63. 1/576460752303423488" x 1/288230376151711744" brick pavers
- 64. 1/1152921504606846976" x 1/576460752303423488" brick pavers
- 65. 1/2305843009213693952" x 1/1152921504606846976" brick pavers
- 66. 1/4611686018427387904" x 1/2305843009213693952" brick pavers
- 67. 1/9223372036854775808" x 1/4611686018427387904" brick pavers
- 68. 1/18446744073709551616" x 1/9223372036854775808" brick pavers
- 69. 1/36893488147419103232" x 1/18446744073709551616" brick pavers
- 70. 1/73786976294838206464" x 1/36893488147419103232" brick pavers
- 71. 1/147573952589676412928" x 1/73786976294838206464" brick pavers
- 72. 1/295147905179352825856" x 1/147573952589676412928" brick pavers
- 73. 1/590295810358705651712" x 1/295147905179352825856" brick pavers
- 74. 1/1180591620717411303424" x 1/590295810358705651712" brick pavers
- 75. 1/2361183241434822606848" x 1/1180591620717411303424" brick pavers
- 76. 1/4722366482869645213696" x 1/2361183241434822606848" brick pavers
- 77. 1/9444732965739290427392" x 1/4722366482869645213696" brick pavers
- 78. 1/18889465931478580854784" x 1/9444732965739290427392" brick pavers
- 79. 1/37778931862957161709568" x 1/18889465931478580854784" brick pavers
- 80. 1/75557863725914323419136" x 1/37778931862957161709568" brick pavers
- 81. 1/151115727451828646838272" x 1/75557863725914323419136" brick pavers
- 82. 1/302231454903657293676544" x 1/151115727451828646838272" brick pavers
- 83. 1/604462909807314587353088" x 1/302231454903657293676544" brick pavers
- 84. 1/1208925819614629174706176" x 1/604462909807314587353088" brick pavers
- 85. 1/2417851639229258349412352" x 1/1208925819614629174706176" brick pavers
- 86. 1/4835703278458516698824704" x 1/2417851639229258349412352" brick pavers
- 87. 1/9671406556917033397649408" x 1/4835703278458516698824704" brick pavers
- 88. 1/19342813113834066795298816" x 1/9671406556917033397649408" brick pavers
- 89. 1/38685626227668133590597632" x 1/19342813113834066795298816" brick pavers
- 90. 1/77371252455336267181195264" x 1/38685626227668133590597632" brick pavers
- 91. 1/154742504910672534362390528" x 1/77371252455336267181195264" brick pavers
- 92. 1/309485009821345068724781056" x 1/154742504910672534362390528" brick pavers
- 93. 1/618970019642690137449562112" x 1/309485009821345068724781056" brick pavers
- 94. 1/1237940039285380274899124224" x 1/618970019642690137449562112" brick pavers
- 95. 1/2475880078570760549798248448" x 1/1237940039285380274899124224" brick pavers
- 96. 1/4951760157141521099596496896" x 1/2475880078570760549798248448" brick pavers
- 97. 1/9903520314283042199192993792" x 1/4951760157141521099596496896" brick pavers
- 98. 1/19807040628566084398385987584" x 1/9903520314283042199192993792" brick pavers
- 99. 1/39614081257132168796771975168" x 1/19807040628566084398385987584" brick pavers
- 100. 1/79228162514264337593543950336" x 1/39614081257132168796771975168" brick pavers
- 101. 1/158456325028528675187087900672" x 1/79228162514264337593543950336" brick pavers
- 102. 1/316912650057057350374175801344" x 1/158456325028528675187087900672" brick pavers
- 103. 1/633825300114114700748351602688" x 1/316912650057057350374175801344" brick pavers
- 104. 1/1267650600228229401496703205376" x 1/633825300114114700748351602688" brick pavers
- 105. 1/2535301200456458802993406410752" x 1/1267650600228229401496703205376" brick pavers
- 106. 1/5070602400912917605986812821504" x 1/2535301200456458802993406410752" brick pavers
- 107. 1/10141204801825835211973625643008" x 1/5070602400912917605986812821504" brick pavers
- 108. 1/20282409603651670423947251286016" x 1/10141204801825835211973625643008" brick pavers
- 109. 1/40564819207303340847894502572032" x 1/20282409603651670423947251286016" brick pavers
- 110. 1/81129638414606681695789005144064" x 1/40564819207303340847894502572032" brick pavers
- 111. 1/162259276832213363391578010288128" x 1/81129638414606681695789005144064" brick pavers
- 112. 1/324518553664426726783156020576256" x 1/162259276832213363391578010288128" brick pavers
- 113. 1/649037107328853453566312041152512" x 1/324518553664426726783156020576256" brick pavers
- 114. 1/1298074214577106907132624082305024" x 1/649037107328853453566312041152512" brick pavers
- 115. 1/2596148429154213814265248164610048" x 1/1298074214577106907132624082305024" brick pavers
- 116. 1/5192296858308427628530496329220096" x 1/2596148429154213814265248164610048" brick pavers
- 117. 1/10384593716616855257060992658440192" x 1/5192296858308427628530496329220096" brick pavers
- 118. 1/20769187433233710514121985316880384" x 1/10384593716616855257060992658440192" brick pavers
- 119. 1/41538374866467421028243970633760768" x 1/20769187433233710514121985316880384" brick pavers
- 120. 1/83076749732934842056487941267521536" x 1/41538374866467421028243970633760768" brick pavers
- 121. 1/166153499465869684112975882535042672" x 1/83076749732934842056487941267521536" brick pavers
- 122. 1/332306998931739368225951765070085344" x 1/166153499465869684112975882535042672" brick pavers
- 123. 1/664613997863478736451903530140170688" x 1/332306998931739368225951765070085344" brick pavers
- 124. 1/1329227995726957472903807060280341376" x 1/664613997863478736451903530140170688" brick pavers
- 125. 1/2658455991453914945807614120560682752" x 1/1329227995726957472903807060280341376" brick pavers
- 126. 1/5316911982907829891615228241121365504" x 1/2658455991453914945807614120560682752" brick pavers
- 127. 1/10633823965815659783230456482242731008" x 1/5316911982907829891615228241121365504" brick pavers
- 128. 1/21267647931631319566460912964485462016" x 1/10633823965815659783230456482242731008" brick pavers
- 129. 1/42535295863262639132921825928970924032" x 1/21267647931631319566460912964485462016" brick pavers
- 130. 1/85070591726525278265843651857941848064" x 1/42535295863262639132921825928970924032" brick pavers
- 131. 1/170141183453050556531687303715883696128" x 1/85070591726525278265843651857941848064" brick pavers
- 132. 1/340282366906101113063374607431767392256" x 1/170141183453050556531687303715883696128" brick pavers
- 133. 1/680564733812202226126749214863534784512" x 1/340282366906101113063374607431767392256" brick pavers
- 134. 1/1361129467624404452253498429727069569024" x 1/680564733812202226126749214863534784512" brick pavers
- 135. 1/2722258935248808904506996859454139138048" x 1/1361129467624404452253498429727069569024" brick pavers
- 136. 1/5444517870497617809013993718908278276096" x 1/2722258935248808904506996859454139138048" brick pavers
- 137. 1/10889035740995235618027987437816556552192" x 1/5444517870497617809013993718908278276096" brick pavers
- 138. 1/21778071481990471236055974875633113104384" x 1/10889035740995235618027987437816556552192" brick pavers
- 139. 1/43556142963980942472111949751266226208768" x 1/21778071481990471236055974875633113104384" brick pavers
- 140. 1/87112285927961884944223899502532452417536" x 1/43556142963980942472111949751266226208768" brick pavers
- 141. 1/174224571855923769888447799005064904835072" x 1/87112285927961884944223899502532452417536" brick pavers
- 142. 1/348449143711847539776895598010129809670144" x 1/174224571855923769888447799005064904835072" brick pavers
- 143. 1/696898287423695079553791196020259619340288" x 1/348449143711847539776895598010129809670144" brick pavers
- 144. 1/1393796574847390159107582392040519238680576" x 1/696898287423695079553791196020259619340288" brick pavers
- 145. 1/2787593149694780318215164784081038477361152" x 1/1393796574847390159107582392040519238680576" brick pavers
- 146. 1/5575186299389560636430329568162076954722304" x 1/2787593149694780318215164784081038477361152" brick pavers
- 147. 1/11150372598779121272860659136321553909444608" x 1/5575186299389560636430329568162076954722304" brick pavers
- 148. 1/22300745197558242545721318272643107818889216" x 1/11150372598779121272860659136321553909444608" brick pavers
- 149. 1/44601490395116485091442636545286215637778432" x 1/22300745197558242545721318272643107818889216" brick pavers
- 150. 1/89202980790232970182885273090572431275556864" x 1/44601490395116485091442636545286215637778432" brick pavers
- 151. 1/178405961580465940365770546181144862551113728" x 1/89202980790232970182885273090572431275556864" brick pavers
- 152. 1/356811923160931880731541092362289725102227456" x 1/178405961580465940365770546181144862551113728" brick pavers
- 153. 1/713623846321863761463082184724579450204454912" x 1/356811923160931880731541092362289725102227456" brick pavers
- 154. 1/1427247692643727522926164369449158900408909824" x 1/713623846321863761463082184724579450204454912" brick pavers
- 155. 1/2854495385287455045852328738898317800817819648" x 1/1427247692643727522926164369449158900408909824" brick pavers
- 156. 1/5708990770574910091704657477796635601635639296" x 1/2854495385287455045852328738898317800817819648" brick pavers
- 157. 1/11417981541149820183409314955593271203271278592" x 1/5708990770574910091704657477796635601635639296" brick pavers
- 158. 1/22835963082299640366818629911186542406542577184" x 1/11417981541149820183409314955593271203271278592" brick pavers
- 159. 1/45671926164599280733637259822373084813085154368" x 1/22835963082299640366818629911186542406542577184" brick pavers
- 160. 1/91343852329198561467274519644746169626170308736" x 1/45671926164599280733637259822373084813085154368" brick pavers
- 161. 1/182687704658397122934549039289492339252340617472" x 1/91343852329198561467274519644746169626170308736" brick pavers
- 162. 1/365375409316794245869098078578984678504681234944" x 1/182687704658397122934549039289492339252340617472" brick pavers
- 163. 1/730750818633588491738196157157969357009362469888" x 1/365375409316794245869098078578984678504681234944" brick pavers
- 164. 1/1461501637267176983476392314315938714018724939776" x 1/730750818633588491738196157157969357009362469888" brick pavers
- 165. 1/2923003274534353966952784628631877428037449879552" x 1/1461501637267176983476392314315938714018724939776" brick pavers
- 166. 1/5846006549068707933905569257263754856074899759104" x 1/2923003274534353966952784628631877428037449879552" brick pavers
- 167. 1/11692013098137415867811138514527509712149799518208" x 1/5846006549068707933905569257263754856074899759104" brick pavers
- 168. 1/23384026196274831735622277029055019424299590236416" x 1/11692013098137415867811138514527509712149799518208" brick pavers
- 169. 1/46768052392549663471244554058110038848599180472832" x 1/23384026196274831735622277029055019424299590236416" brick pavers
- 170. 1/93536104785099326942489108116220077697198360945664" x 1/46768052392549663471244554058110038848599180472832" brick pavers
- 171. 1/187072209570198653884978216232440155394396721891328" x 1/93536104785099326942489108116220077697198360945664" brick pavers
- 172. 1/3

SCOPE COST ESTIMATE

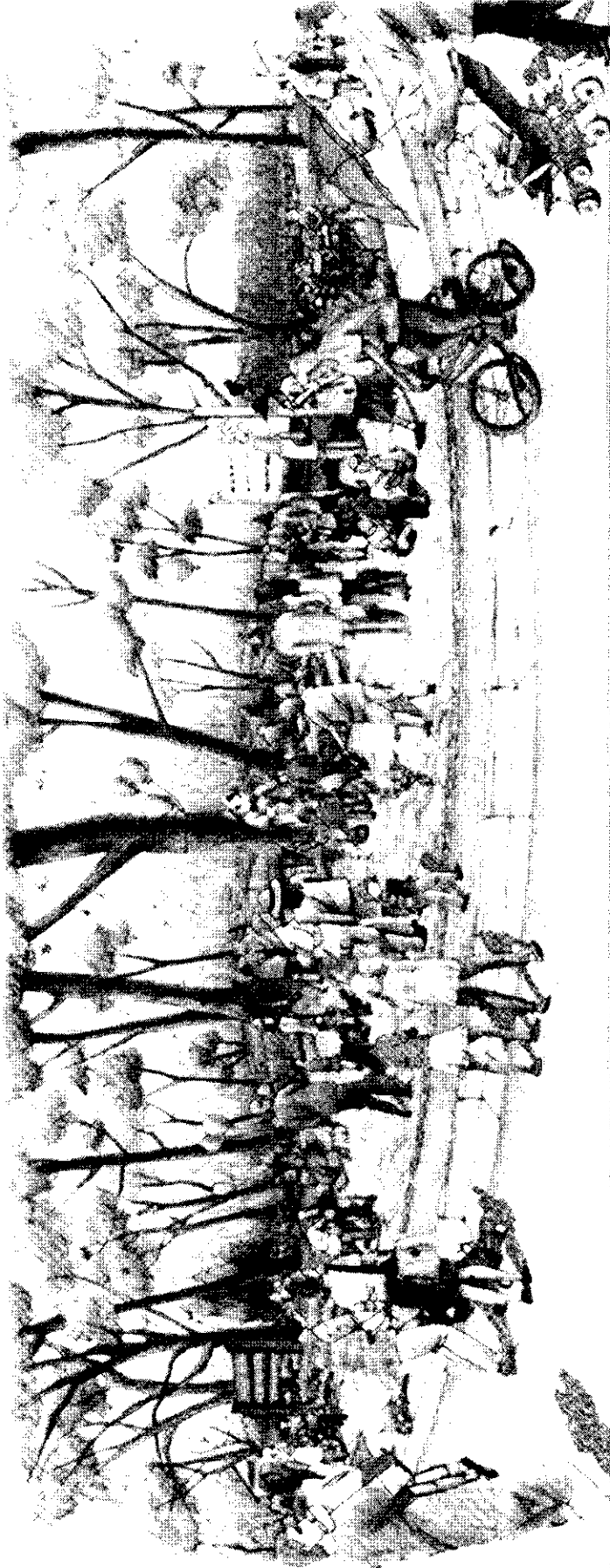
Fort Willard Historic Site – Phase I Park and Landscape Improvements

Plaza	\$ 25,000
Soil Preparation	\$ 6,000
Sod / grass	\$ 4,000
Sub Total	<u>\$ 35,000</u>
Construction Contingency (10%)	\$ 3,500
Administration (8%)	\$ <u>2,800</u>
Total Project Cost	<u>\$ 41,300</u>

This page is intentionally left blank.

FAIRFAX, VA

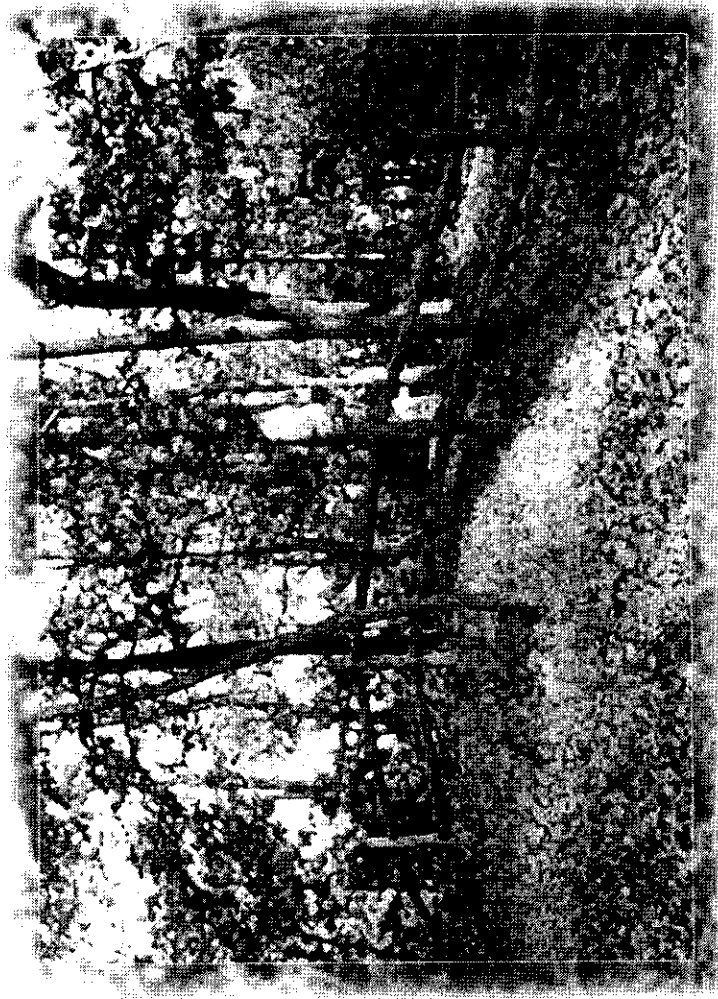
FORT WILLARD CIRCLE



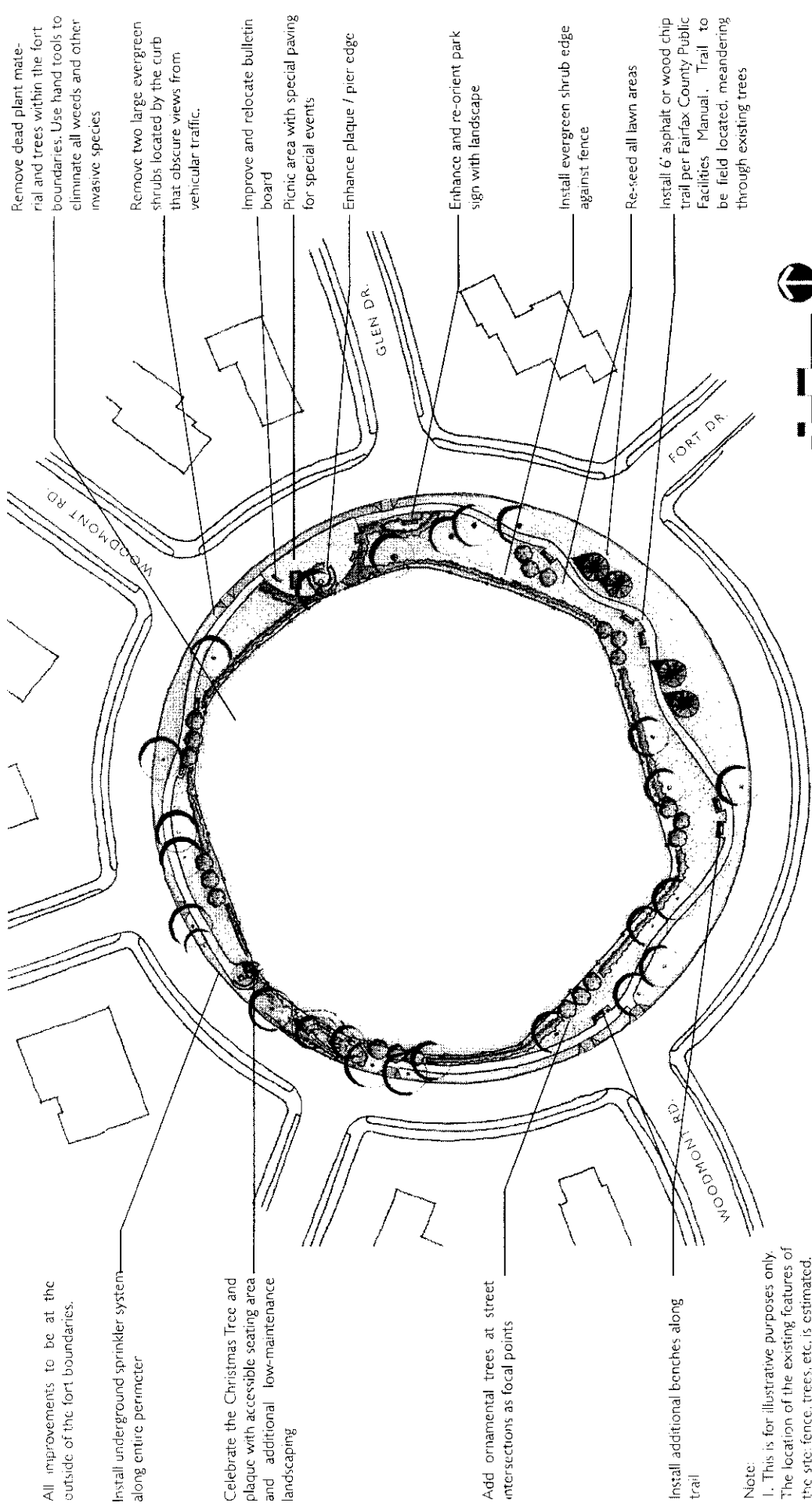
LandDesign

Belle Haven
Citizen's Association

The purpose of this document is to propose a series of improvements for Fort Willard Circle, located in the community of Belle Haven in Fairfax, Virginia. The improvement goals are to highlight and preserve the historical value of the Civil War historic site within the park, while enhancing an open space that can be enjoyed, not only by Civil War enthusiasts but by the Belle Haven community at large.



Contents	
Illustrative Concept Plan	1
Illustrative Improvements	2-8



Remove dead plant material and trees within the fort boundaries. Use hand tools to eliminate all weeds and other invasive species

Remove two large evergreen shrubs located by the curb that obscure views from vehicular traffic.

Improve and relocate bulletin board

Picnic area with special paving for special events

Enhance plaque / pier edge

Enhance and re-orient park sign with landscape

Install evergreen shrub edge against fence

Re-seed all lawn areas

Install 6' asphalt or wood chip trail per Fairfax County Public Facilities Manual. Trail to be field located, meandering through existing trees

All improvements to be at the outside of the fort boundaries.

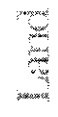
Install underground sprinkler system along entire perimeter

Celebrate the Christmas Tree and plaque with accessible seating area and additional low-maintenance landscaping

Add ornamental trees at street intersections as focal points

Install additional benches along trail

Note:
 1. This is for illustrative purposes only. The location of the existing features of the site: fence, trees, etc. is estimated.
 2. The trail and other improvements are to be field located.



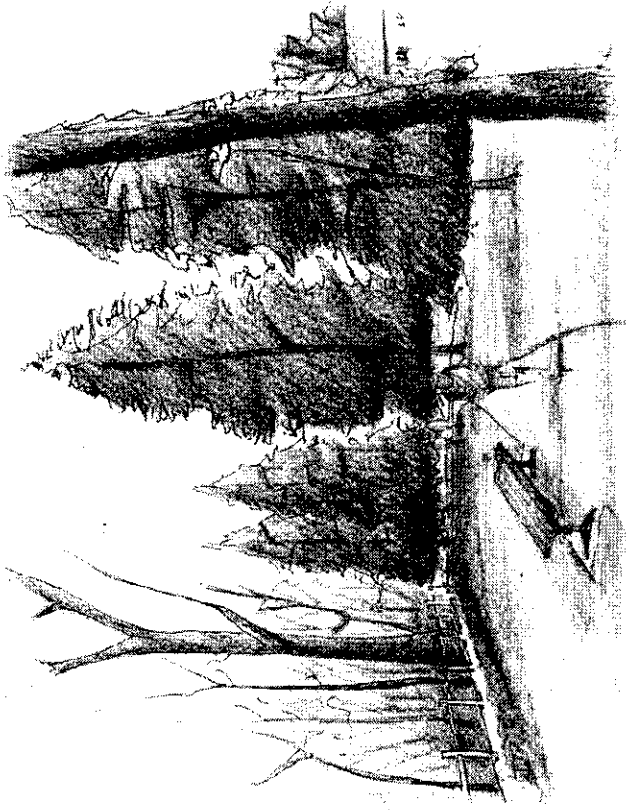
**Belle Haven
 Citizen's Association**

FORT WILLARD CIRCLE
 FAIRFAX, VA
 CONCEPT PLAN



Existing Conditions:

- Very few places to sit
- Un-maintained lawn areas



Proposed Improvements:

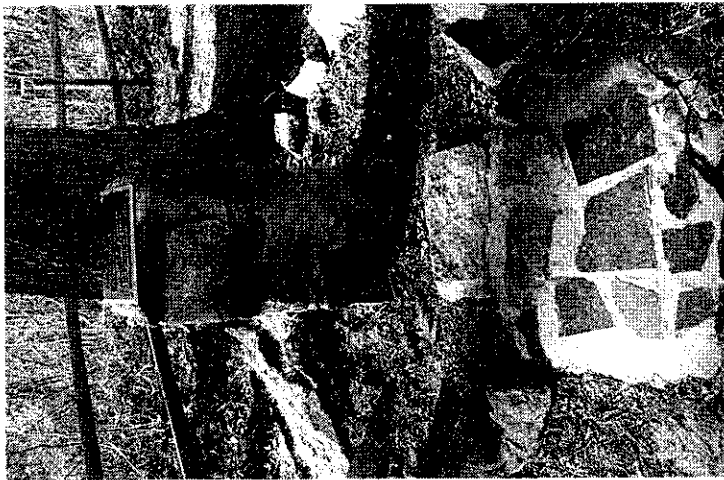
- 6' asphalt or wood chip trail for walking, strolling, and jogging
- Install underground automated sprinkler system along entire perimeter
- Install additional benches along trail
- Re-seed all lawn areas

Land

FORT WILLARD CIRCLE
FAIRFAX, VA

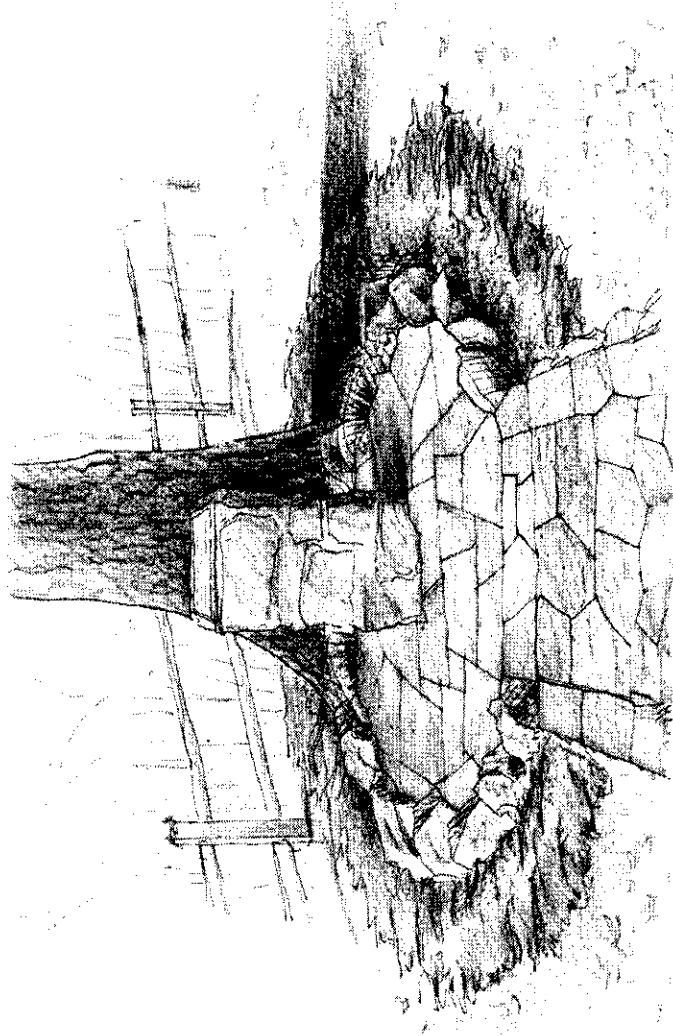
ILLUSTRATIVE IMPROVEMENTS

Belle Haven
Citizen's Association



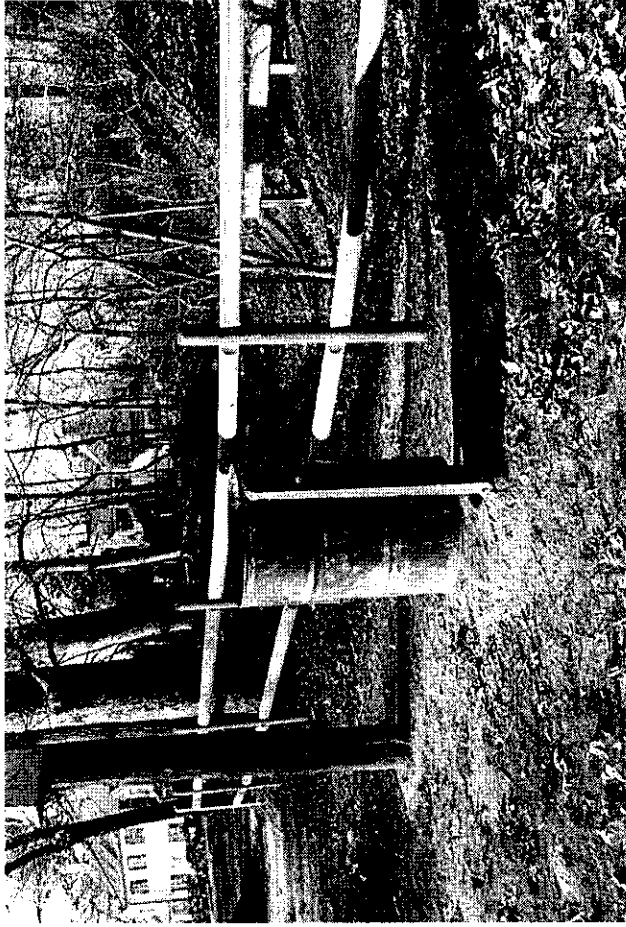
Existing Conditions:

- Broken Landing
- Unkempt, not celebrated plaque



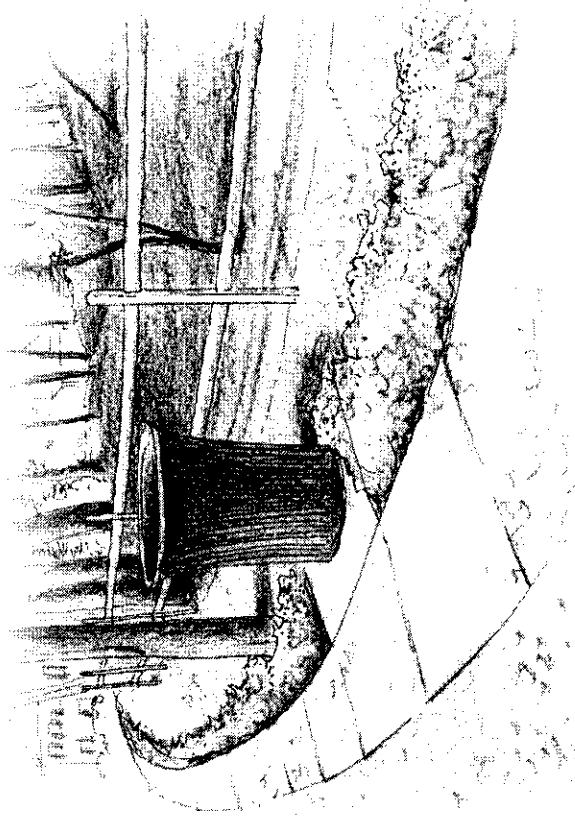
Proposed Improvements:

- Repair plaque / pier setting
- Add flagstone paving for accessibility
- Add low-maintenance landscaping



Existing Conditions:

- Unightly trash receptacle
- Unightly and potentially dangerous electrical pole and wiring



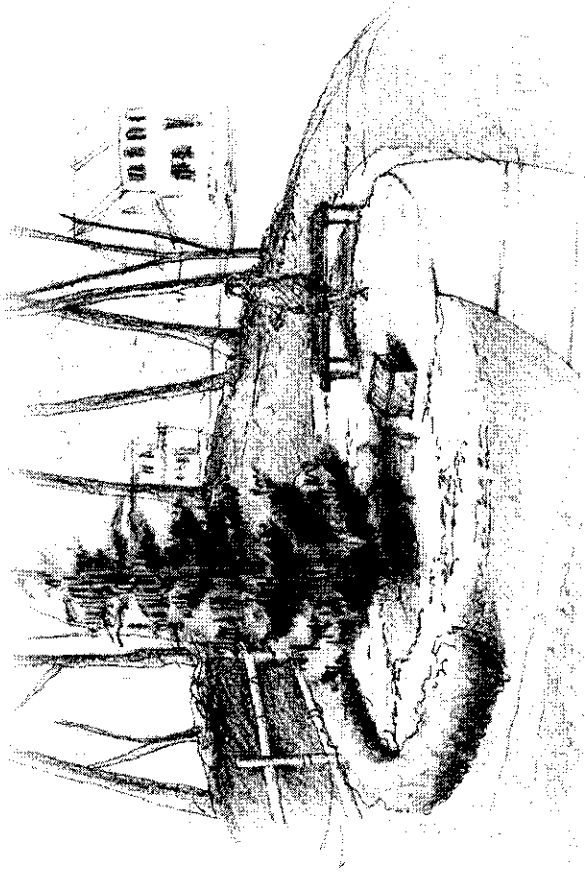
Proposed Improvements:

- Install new trash receptacle, add receptacle to picnic area
- Remove electrical pole and put electrical wiring underground for access to sprinkler system



Existing Conditions:

- Memorial Christmas Tree and plaque at remote unnoticeable location



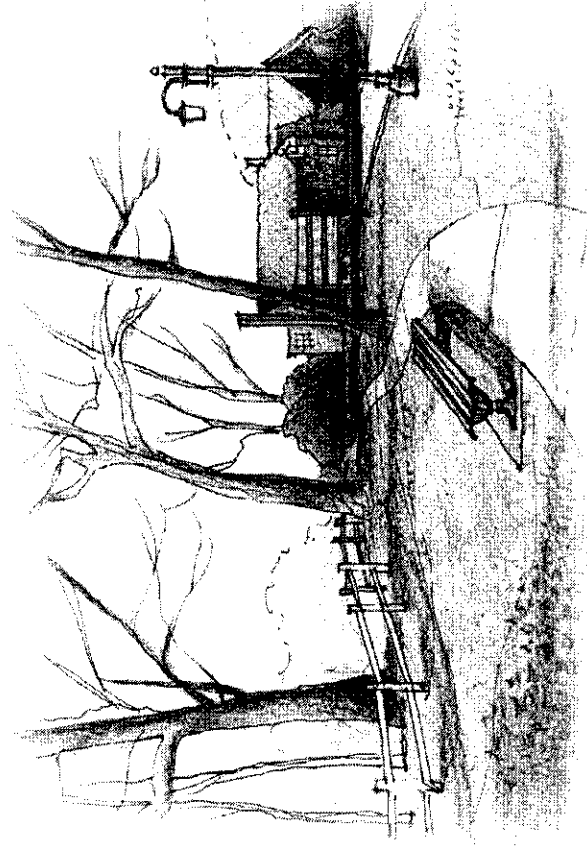
Proposed Improvements:

- Extend asphalt trail to reach Christmas Tree location
- Celebrate plaque and tree with low maintenance landscaping
- Provide a bench on special paved area



Existing conditions:

- Not enough sitting areas
- Large shrubs by the curb obscure views from vehicular traffic



Proposed Improvements:

- Seed all lawn areas
- Add a pedestrian path, meandering through existing trees
- Install additional benches

Land

FORT WILLARD CIRCLE
FAIRFAX, VA

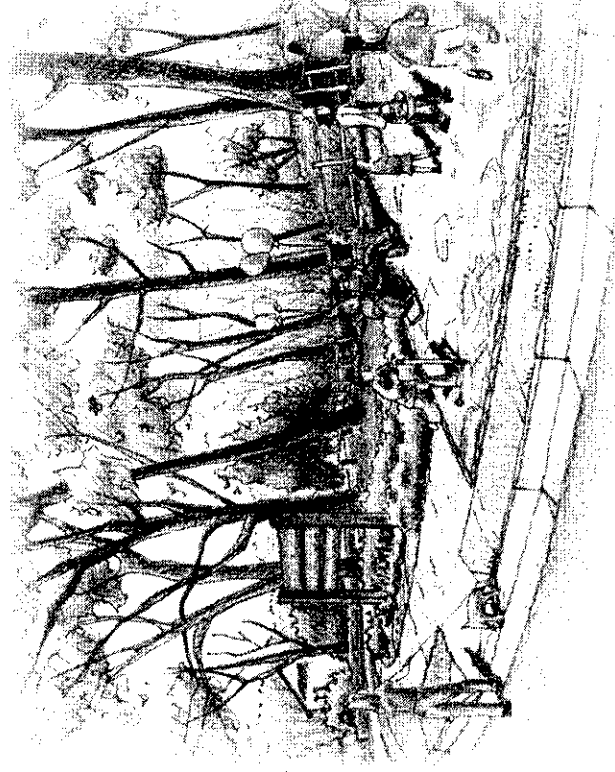
ILLUSTRATIVE IMPROVEMENTS

Belle Haven
Citizen's Association



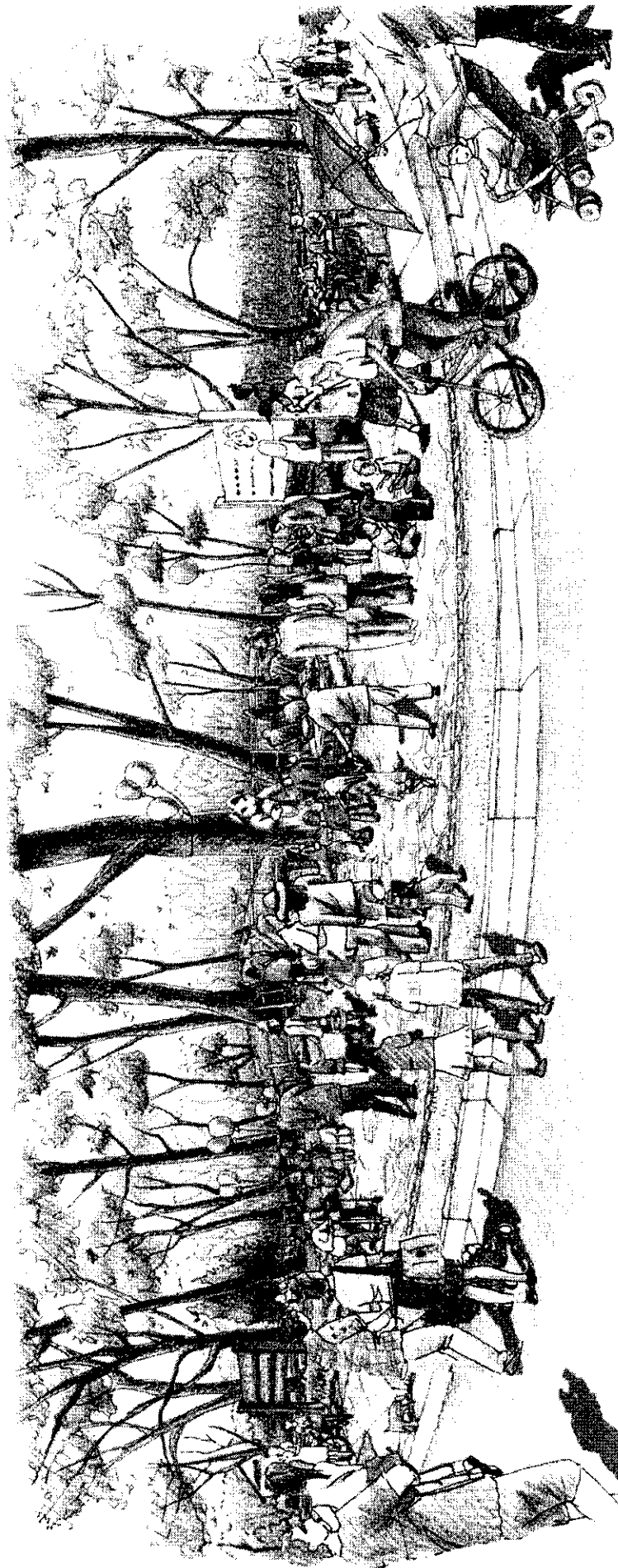
Existing conditions:

- Lack of focal point in the entry area
- Unkempt open area
- Lack of facilities for community activities
- Lack of handicap accessibility



Proposed Improvements:

- Add curb ramp for handicap accessibility
- Celebrate park sign with landscape bed
- Add flagstone paving to provide accessible open space for community events
- Add low-maintenance landscaping around picnic area

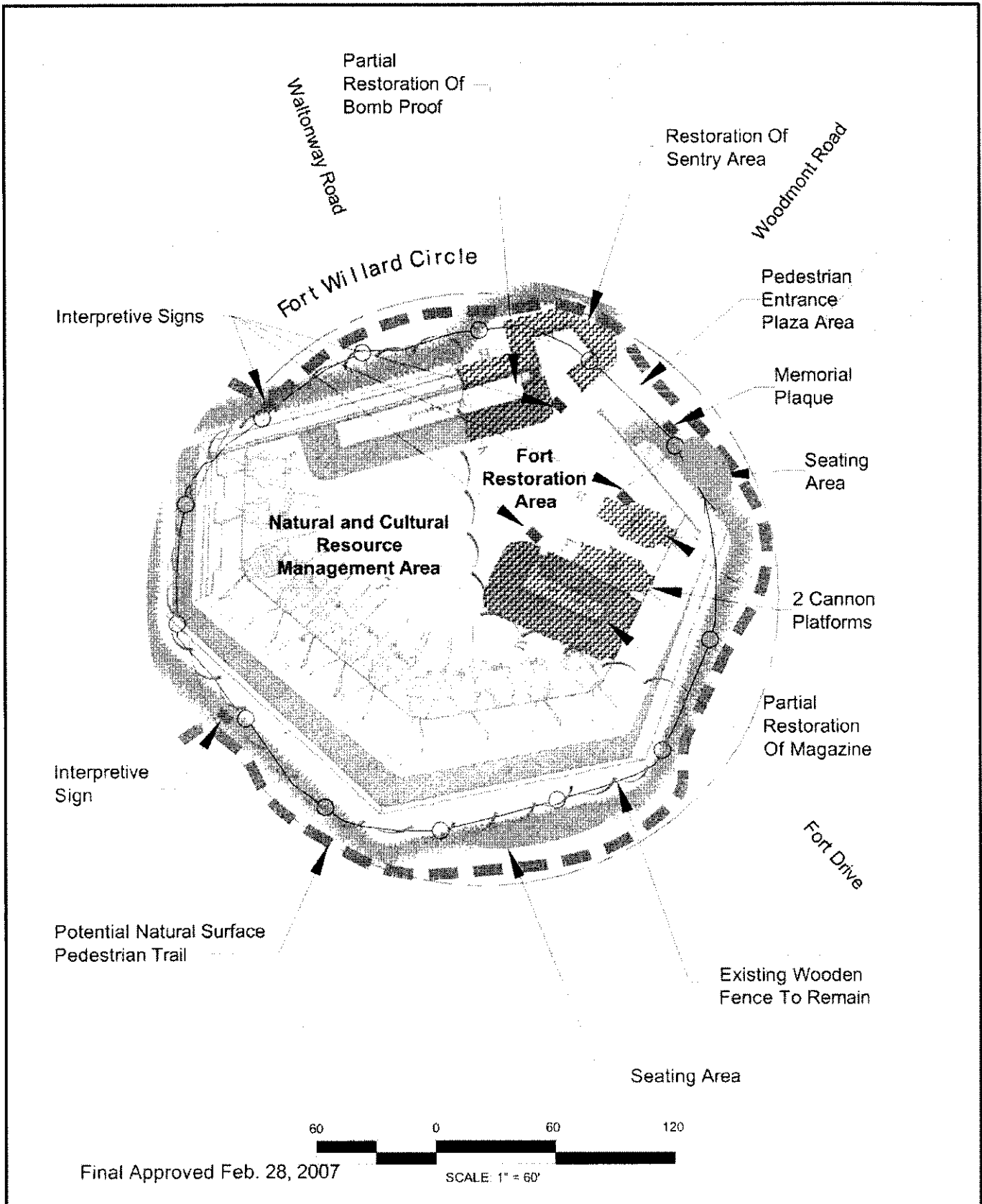


Lard

FORT WILLARD CIRCLE
FAIRFAX, VA

ILLUSTRATIVE IMPROVEMENTS

Belle Haven
Citizen's Association



CONCEPTUAL DEVELOPMENT PLAN FORT WILLARD HISTORIC SITE



This page is intentionally left blank.