



---

# HUNTLEY MEADOWS PARK

---

## Naturalist-Led Program

---

3701 Lockheed Blvd      Alexandria, VA 22306  
(703) 768-2525



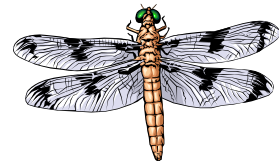
Huntley Meadows is a 1,428 acre park of meadow, woodland and wetland. Operated by the Fairfax County Park Authority, the park is managed as a wildlife sanctuary for enjoyment, education and discovery. During your walk through the park you may not always see wildlife, but look for their signs along the trail and boardwalk. So everyone can enjoy their visit to the park we ask for your cooperation with the following guidelines:

### Huntley Meadows Trail Etiquette

1. Huntley Meadows is a protected natural area. **Do not take anything out of the park or leave (release) anything in the park.**
2. Respect the plants and animals by **staying on marked trails**. Remember to share the trails by moving to the right hand side when passing other visitors. Walking in pairs on the boardwalk is advised.
3. **Keep voices soft and walk quietly**. Please be considerate to the naturalists and children by leaving cell phones turned off.

### Tips for a Successful Visit

1. Please have each child wear a visible nametag with his/her name on it.
2. Appropriate adult supervision is essential. **We ask for 1:5 ratio of adults to children. Please do not bring more parents than this as it makes the group too large.** Extra adults will be charged the same fee as students.
3. Assign five children to each adult. Children should stay with their adult on the trails and in the visitor center. Please monitor bathroom use.
4. Please share these guidelines and tips with all teachers and parents on the trip.
5. Leave all backpacks, snacks, lunches, and water bottles on the bus.



### Naturalist-Led Program

**The fee for this program is \$5 per student. Please bring payment on the day of your visit, in the form of cash, credit card, or check made out to FCPA-HMP.**

Before bringing your group into the visitor center, let staff know you have arrived. **Your group is scheduled for a program with a naturalist.** Please be prompt; the time allotted to your group usually cannot be extended if you are late. The program usually begins with a short introduction followed by a walk on the trails and usually lasts approximately 1½ hours. In the case of rain, we will **NOT** cancel the program. Be prepared to go outside if there is light rain or snow. In the case of heavy rain or thunderstorms, we will conduct a shortened program totally indoors.

There are no picnic facilities in the park but staff will gladly give you directions to Stoneybrooke (no bathrooms) or Lee District Park (703-922-9841) just minutes away. If you do bring snack, please make sure you clean up after yourself. Please bring your own trash bags. There is a dumpster on the service road behind the visitor center.

If you have any questions or concerns, please call Melissa Gaulding or the staff-on-duty at (703) 768-2525.

**We look forward to seeing your group!**