



Kings Park Park Master Plan Revision

Public Input Meeting
January 15, 2009





Park Authority Mission

Enhance Citizen's Quality of Life Through:

- Natural & Cultural Resource Stewardship
- Quality Facilities & Services
- Recreational Opportunities





Why a Master Plan Revision?

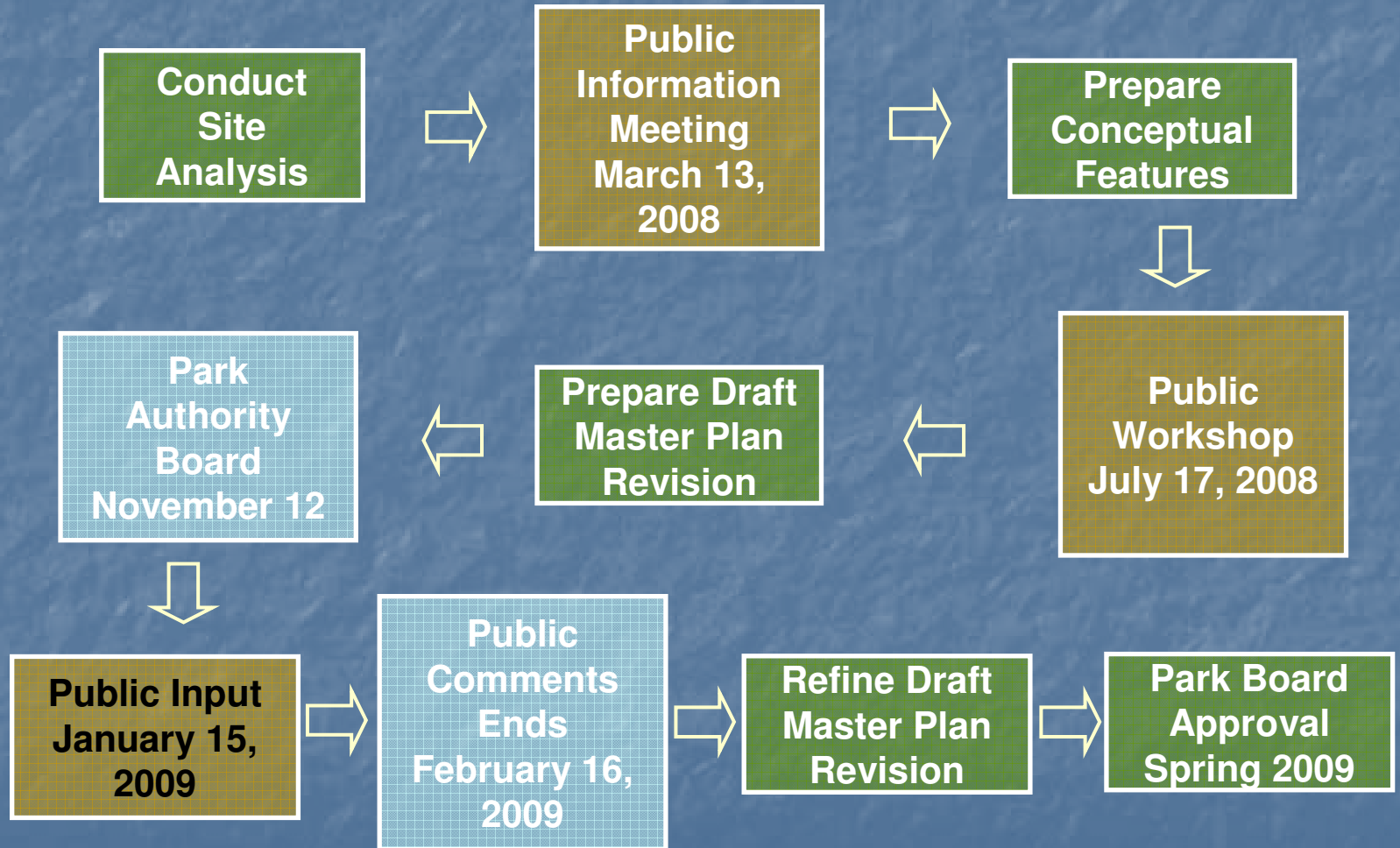
Master Plan Revision

- Incorporate Pool Site
- 40 Years
- Park Use Changes
- Expectations Change
- Improve Experience
- Improve Stewardship



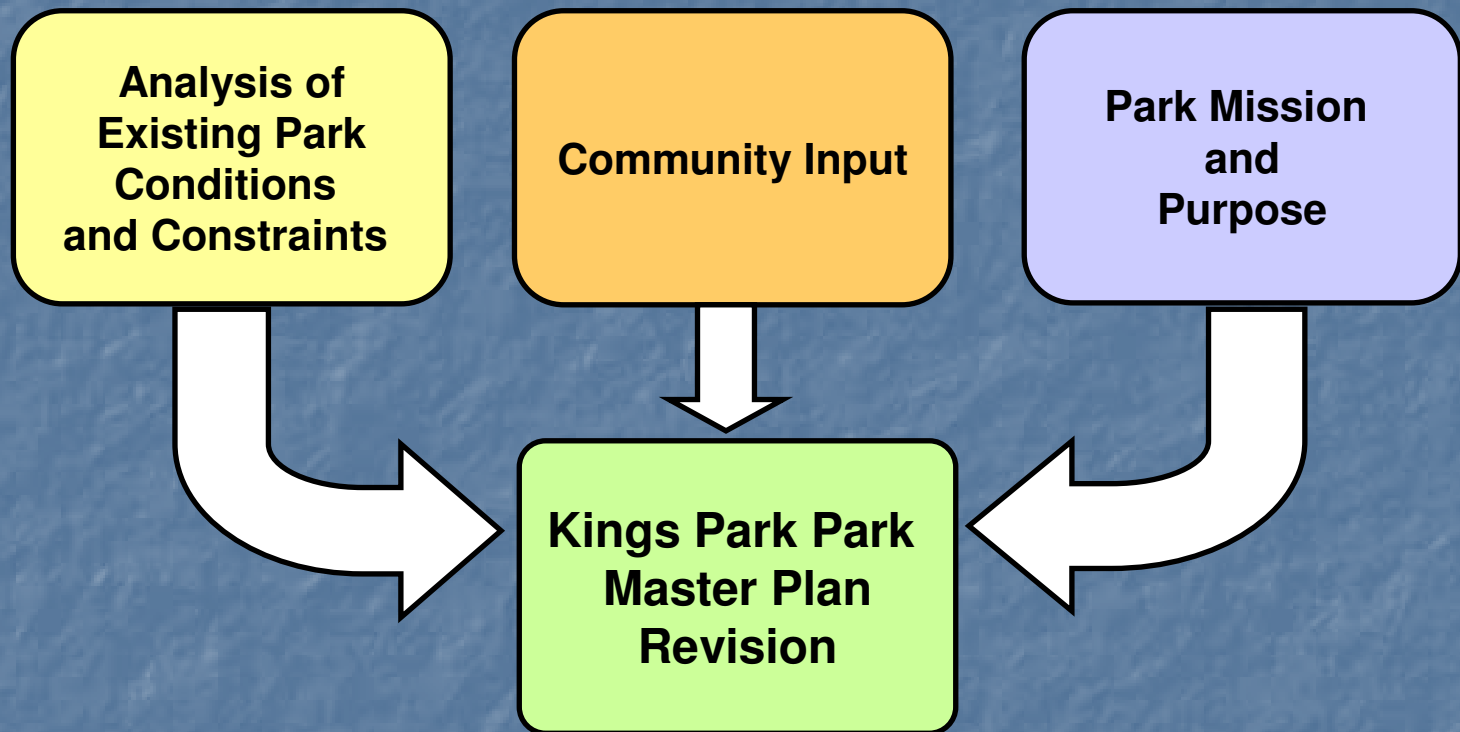


Master Planning Process





Park Design Process

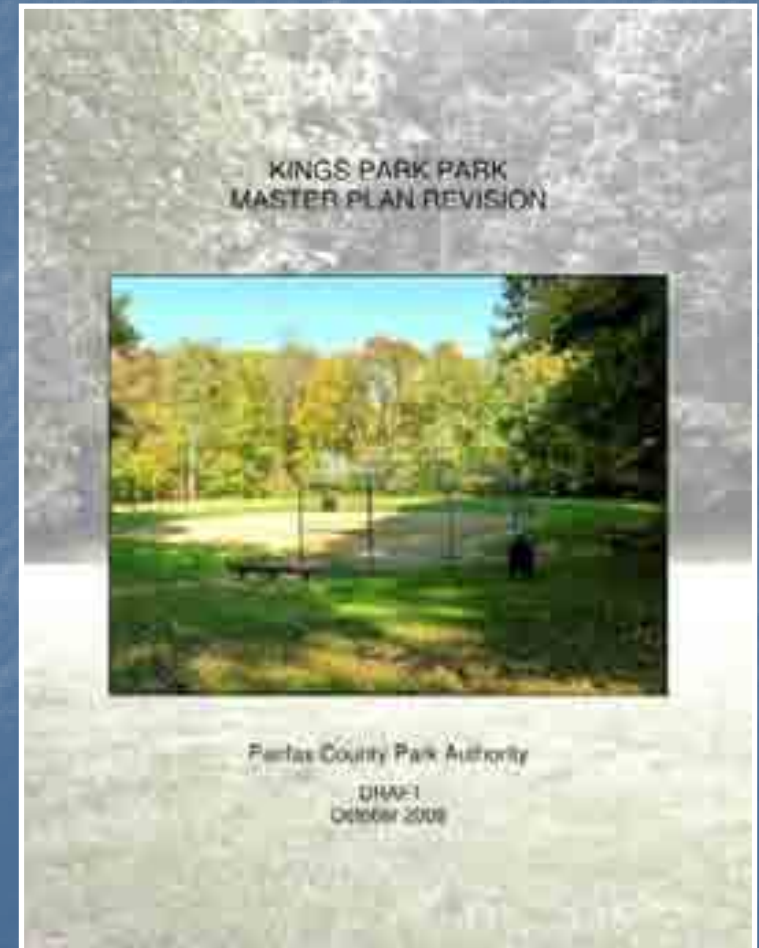




Master Plan Components

Written Report

- Park purpose & classification
- Existing conditions & constraints
- Desired visitor experience
- Park features
- Design concerns





Master Plan Components

General Management Plan (GMP)

- Identifies management zones



Conceptual Development Plan (CDP)

- General location of facilities





Park Location

Transportation

- 495
- VRE
- Rolling
- Burke Lake
- Braddock
- Kings Park
- Parliament





Park Location

Parks

- CCT
- Wakefield
- Lake Accotink
- Royal Ridge
- Red Fox Forest
- Long Branch





Park Background

Park History

- 1961





Park Background

Park History

- 1961
- Royal Pool





Park Background

Park History

- 1961
- Royal Pool
- 1967





Park Background

Park History

- 1961
- Royal Pool
- 1967
- 2006





Existing Conditions

Natural

- Topography

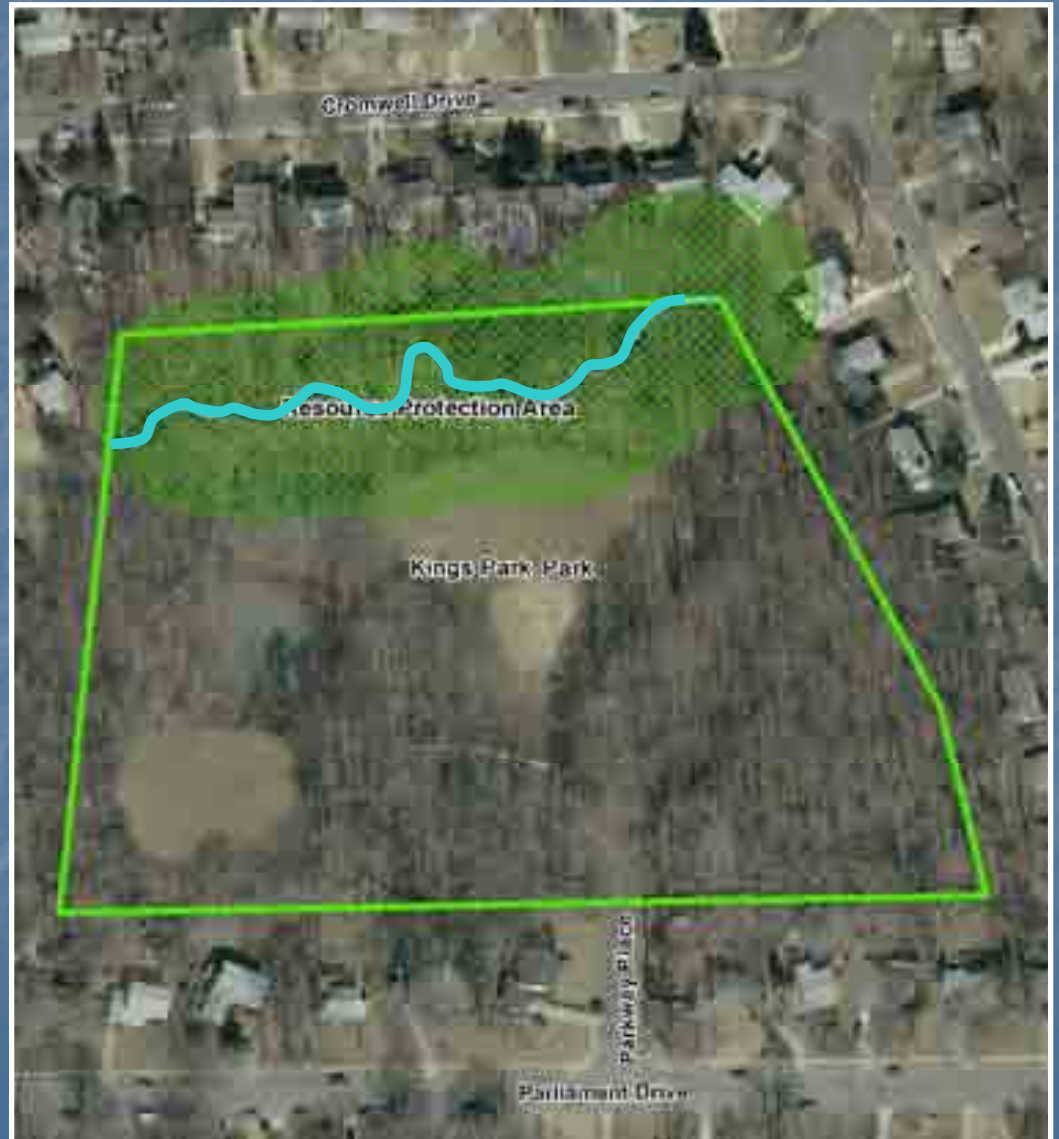




Existing Conditions

Natural

- Topography
- Hydrology
- Stream

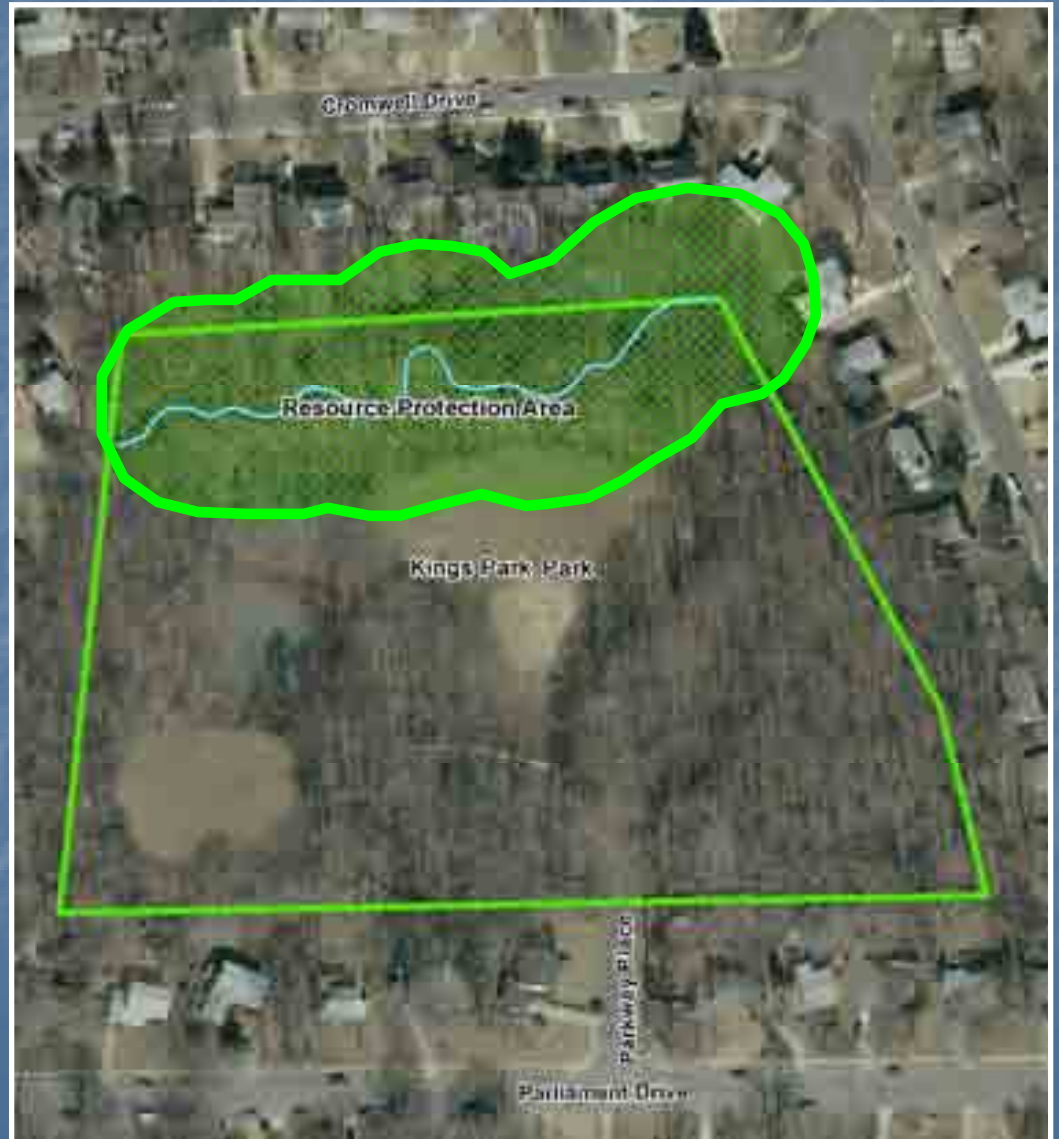




Existing Conditions

Natural

- Topography
- Hydrology
- Stream
- RPA





Existing Conditions

Natural

- Topography
- Hydrology
- Vegetation
- Natives





Existing Conditions

Natural

- Topography
- Hydrology
- Vegetation
- Natives
- Invasives





Existing Conditions

**Natural
Cultural**

- Quartz Quarry
- Workshops
- Wooded
Playground





Existing Conditions

Active Recreation Facilities:

- 1 Practice Diamond Field
- 2 Basketball Courts
- 2 Lit Tennis Courts





Existing Conditions

Passive Recreation Facilities:

- Picnic Area
- Playground
- Paved Trail
- Open Field (former pool)





Park Purpose

- Preserve Natural and Cultural Resources
- Provide Recreational Facilities
- Provide Social Gathering Places





Potential Sites for Change



Former Pool Site

South Parking Lot

Playground Area



Features Considered

- Racquetball Courts
- Disc Golf Course
- Off-leash Dog Park
- Small Rectangle Field
- School-age Play Equipment
- Phased Relocation of Playground
- Bandstand
- Restroom
- Expand Trail
- Tennis Practice Wall
- Climbing Structure
- Improved Picnic Area





Community Input

Public Workshop

- Relocate Playground
- School-age Play Equip
- Open Play Area
- Expand Trail
- Tennis Practice Wall
- Retain Parking
- Prune Trees
- Plant Trees

Civic Association

- Relocate Playground
- School-age Play Equip
- Open Play Area
- Expand Trail
- Tennis Practice Wall
- Retain Parking
- Prune Trees
- Plant Trees

Differing Views:

Picnic Pavilion





Draft Master Plan Revision

Master Plan Revision

- School-age Play Equipment
 - Phase Relocation of Playground
 - Climbing Structure





Draft Master Plan Revision

Master Plan Revision

- School-age Play Equipment
- Tennis Practice Wall





Draft Master Plan Revision

Master Plan Revision

- School-age Play Equipment
- Tennis Practice Wall
- Open Play Area





Draft Master Plan Revision

Master Plan Revision

- School-age Play Equipment
- Tennis Practice Wall
- Open Play Area
- Picnic Pavilion





Draft Master Plan Revision

Master Plan Revision

- School-age Play Equipment
- Tennis Practice Wall
- Open Play Area
- Picnic Pavilion
- Expand Trail Loop





Draft Master Plan Revision

Master Plan Revision

- School-age Play Equipment
- Tennis Practice Wall
- Open Play Area
- Picnic Pavilion
- Expand Trail Loop
- Protect and Interpret Resources





General Management Plan

GMP Zones

- Entrance





General Management Plan

GMP Zones

- Entrance
- Pedestrian





General Management Plan

GMP Zones

- Entrance
- Pedestrian
- Vehicular





General Management Plan

GMP Zones

- Entrance
- Buffer





General Management Plan

GMP Zones

- Entrance
- Buffer
- Recreation

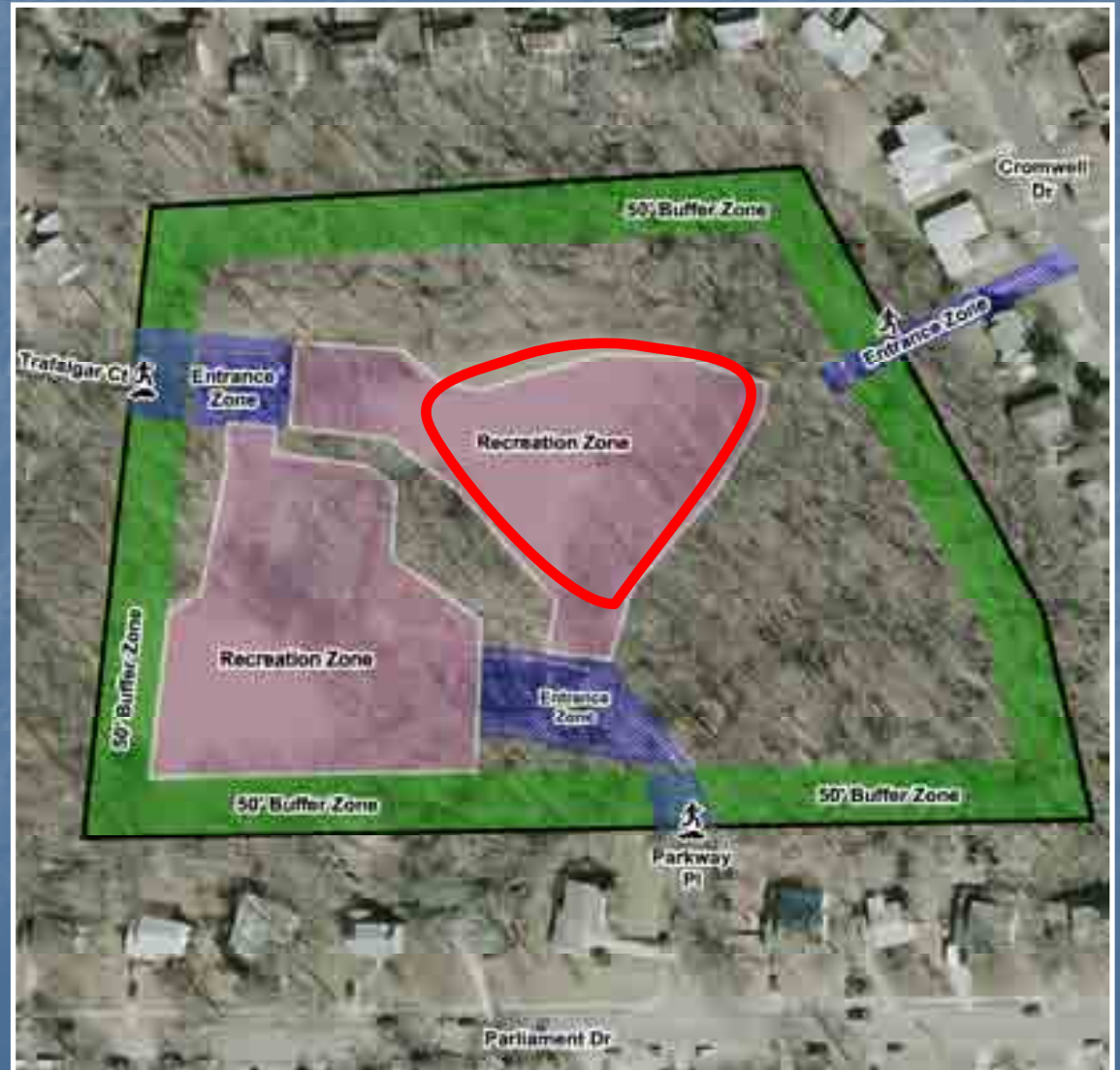




General Management Plan

GMP Zones

- Entrance
- Buffer
- Recreation
- Ball Field





General Management Plan

GMP Zones

- Entrance
- Buffer
- Recreation
- Ball Field
- Courts

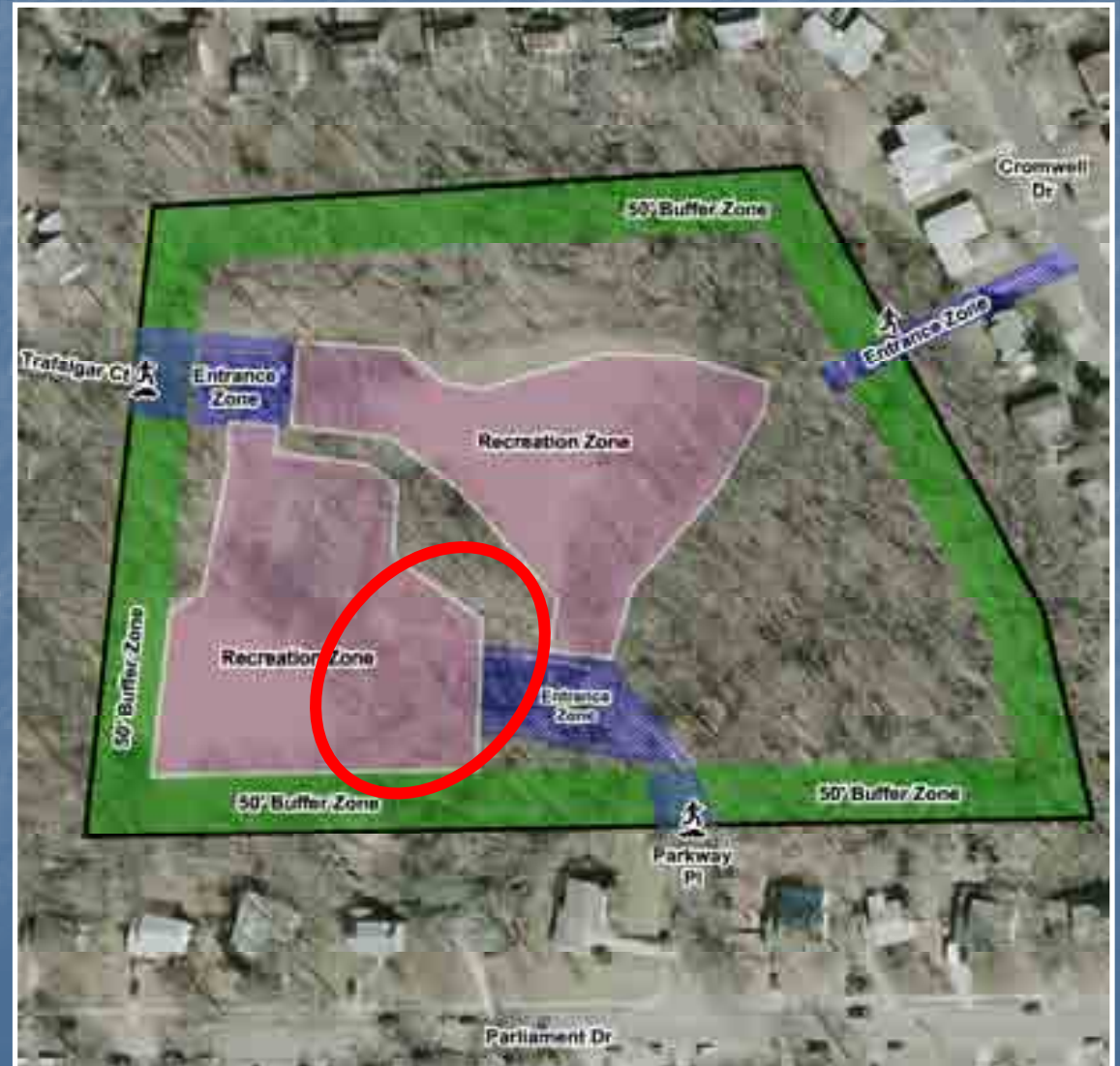




General Management Plan

GMP Zones

- Entrance
- Buffer
- Recreation
- Ball Field
- Courts
- Family Area





General Management Plan

GMP Zones

- Entrance
- Buffer
- Recreation
- Resource Protection





Conceptual Development Plan

CDP

Existing

- Parking Lots





Conceptual Development Plan

CDP

Existing

- Parking Lots
- Ball Field





Conceptual Development Plan

CDP

Existing

- Parking Lots
- Ball Field
- Courts





Conceptual Development Plan

CDP

New Features

- Practice Wall





Conceptual Development Plan

CDP

New Features

- Practice Wall
- Family Area





Conceptual Development Plan

CDP

New Features

- Practice Wall
- Family Area
- Open Play Area





Conceptual Development Plan

CDP

New Features

- Practice Wall
- Family Area
- Open Play Area
- Trails





Conceptual Development Plan

CDP

New Features

- Practice Wall
- Family Area
- Open Play Area
- Trails
- Reforestation
- Interpretation



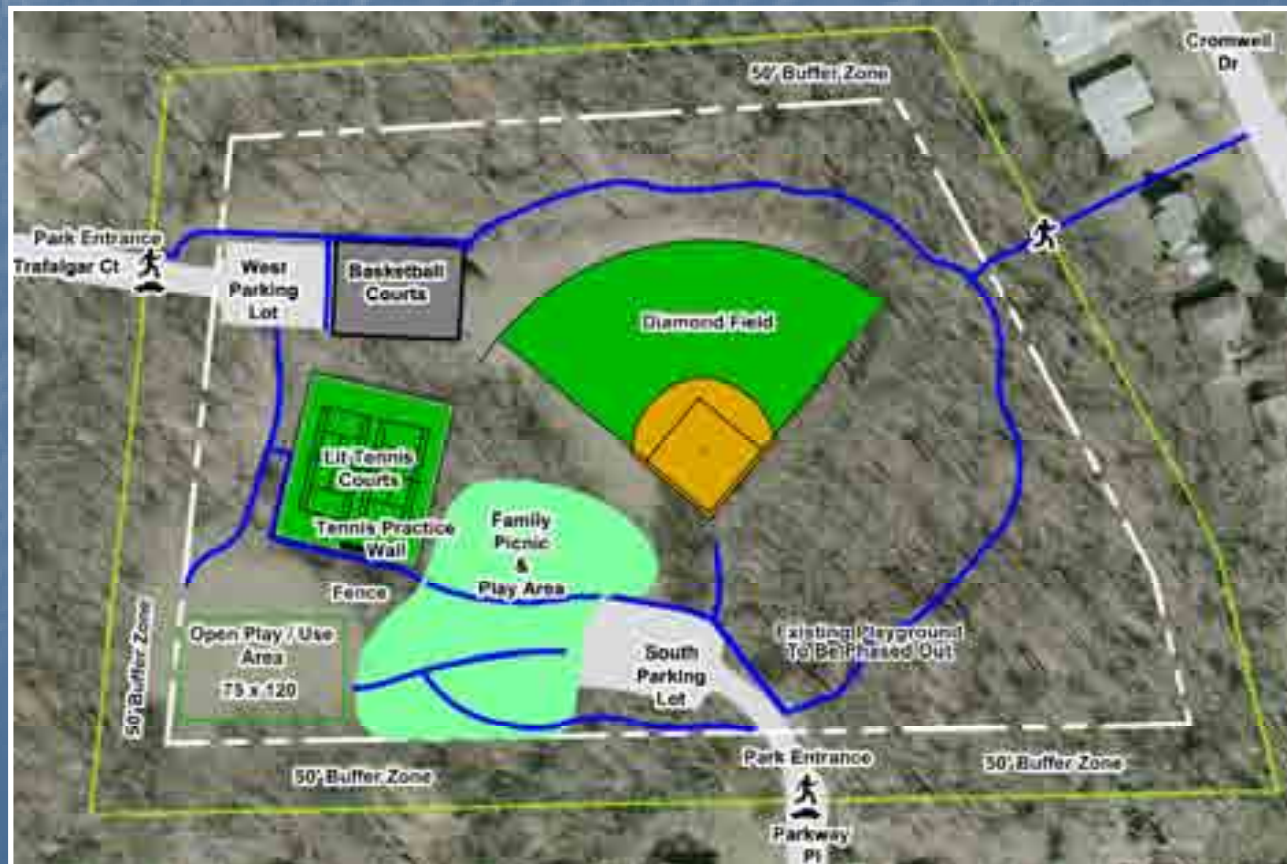


Next Steps

February 16 – Public Comment Period Ends

February - March - Revise Draft Master Plan

Spring 2009 - Park Authority Board Approval





Feedback

Please visit our website:
<http://www.fairfaxcounty.gov/parks/plandev/kingspark.htm>

Please Send comments to:
e-mail:parkmail@fairfaxcounty.gov

Andy Galusha, Project Manager
Planning & Development Division, FCPA
Suite 406
12055 Government Center Parkway,
Fairfax, Virginia 22035

Phone: 703-324-8702

