



FAIRFAX COUNTY PARK AUTHORITY

VOLUNTEER HANDBOOK

VOLUNTEERS
Protecting
Our
Resources



RESOURCE MANAGEMENT DIVISION

Greetings! The Resource Management Division of the Fairfax County Park Authority welcomes you to our volunteer staff. We are delighted to have you join us. Your commitment to caring for the natural, cultural and horticultural resources of Fairfax County is vital to the Fairfax County Park Authority and the Resource Management Division. Volunteers are our lifeblood and a crucial link to the community.

We hope your volunteer experience will be enjoyable and rewarding. While volunteering, you will make a difference in your community. You may also develop friendships and learn new skills.

Throughout this handbook, you will find answers to questions you may have about the agency, the division, and our volunteer program.

Mona
Mona Enquist-Johnston
Manager, Volunteer Interpretation and Program Services

Table of Contents

Resource Management Division Volunteer Program	3
Guiding Principles	
Philosophy	
Our Compact with You	
Introduction to the Resource Management Division.....	4
Fairfax County Park Authority Organizational Chart	5
Resource Management Division Organizational Chart	6
Map	7
Selected Site Descriptions.....	8-10
Selected Section Descriptions.....	11
Benefits.....	12-15
Frequently Asked Questions.....	16-17
Volunteer Positions and Contacts.....	18-19
Thanks!.....	20



This document is a publication
of Fairfax County, Virginia.
Revised November 2006

To request this information
in an alternative format,
contact 703-324-3998.



Resource Management Division Volunteer Program

Guiding Principles

Leadership	Volunteers take an active and responsible role in the volunteer program.
Ownership	Volunteers share in the development and implementation of volunteer program goals, projects, publications and activities.
Stewardship	Volunteers' support and involvement is essential to achieving successful stewardship of the county's resources.



Philosophy

Volunteers are:

- treated with the same respect and support as paid staff.
- recognized as professionals in their positions, receiving appropriate training.
- part of the staff team.
- representatives of the agency to the public.
- representatives of the public to the agency.



Our Compact with You

Resource Management Division volunteers represent the public perspective to the Fairfax County Park Authority. To meet the needs of the public, volunteers share in the development of goals and contribute their ideas, skills, toil and time to attain these goals.

As the agency's representative to the public, volunteers receive recognition for the accomplishments, ideas, skills, toil and time and they get encouragement, support, gratitude and trust from the Park Authority.

An Introduction to the Resource Management Division

History

The Fairfax County Park Authority was created in 1950 by ordinance of the Board of Supervisors and given the responsibility of “acquiring, developing, operating and maintaining parks and park facilities in the County of Fairfax.”

The Park Authority began with a \$250 budget, one employee and no acreage. Today, the Fairfax County Park Authority manages more than 350 parks and maintains over 17,000 acres of parklands for recreational, environmental and cultural purposes. Operating funds for the Park Authority come from two primary sources: the Fairfax County General Fund and user fees, each comprising roughly half of the Park Authority’s budget.

In 1959, the Park Authority expanded its stewardship to include historic properties, and in 1972 the Division of Historic Preservation was created to preserve, restore, manage and interpret historic properties.

The Conservation Division was formed in the early 1970s to protect and preserve the natural and cultural heritage of Fairfax County and to contribute to the county’s quality of life by providing education, enjoyment and awareness of our natural and cultural heritage.

In 1995, the Conservation Division and the Division of Historic Preservation merged to form the Resource Management Division.

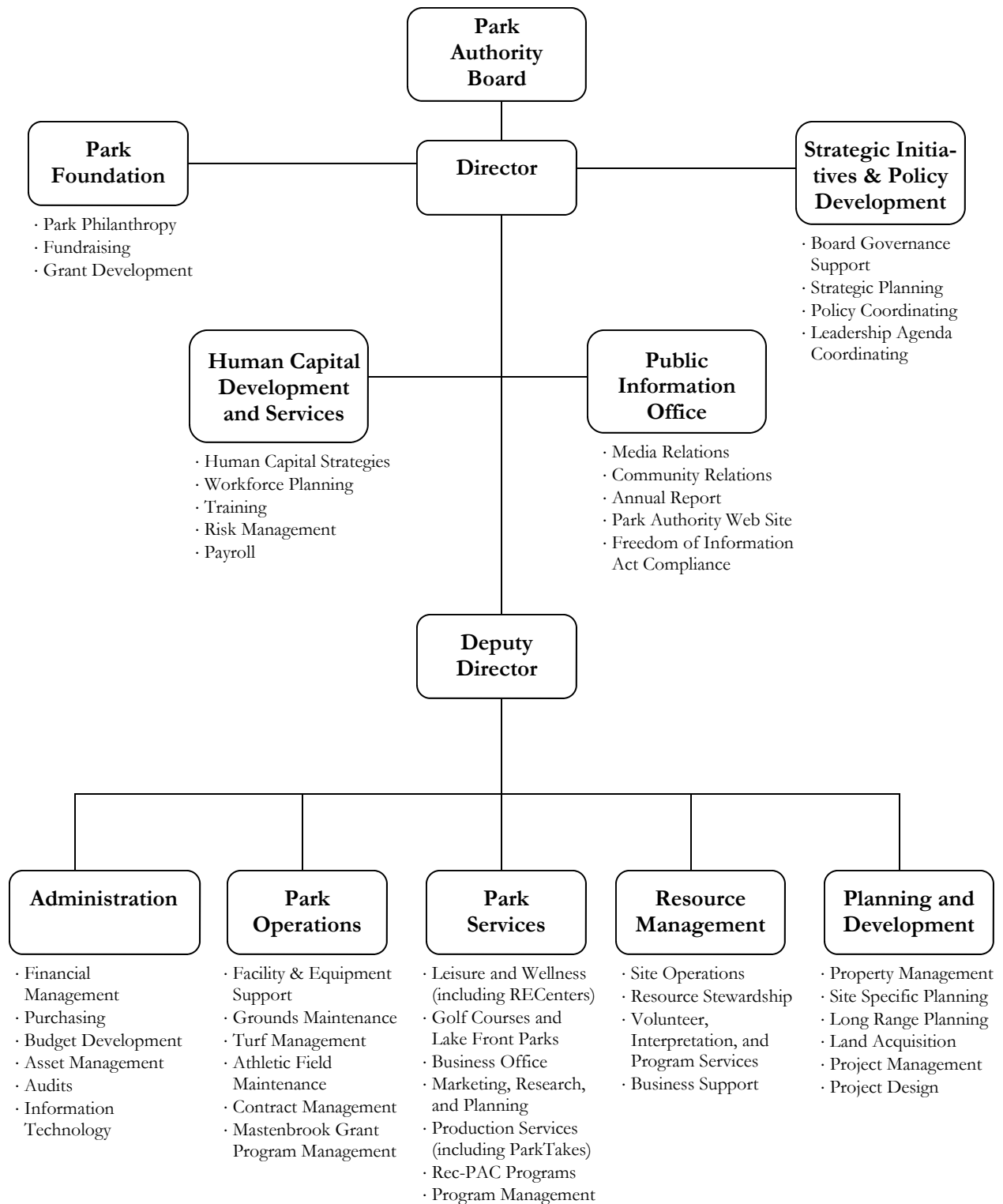


Martha, a Volunteer-On-Duty, staffs the front desk at Huntley Meadows Park.

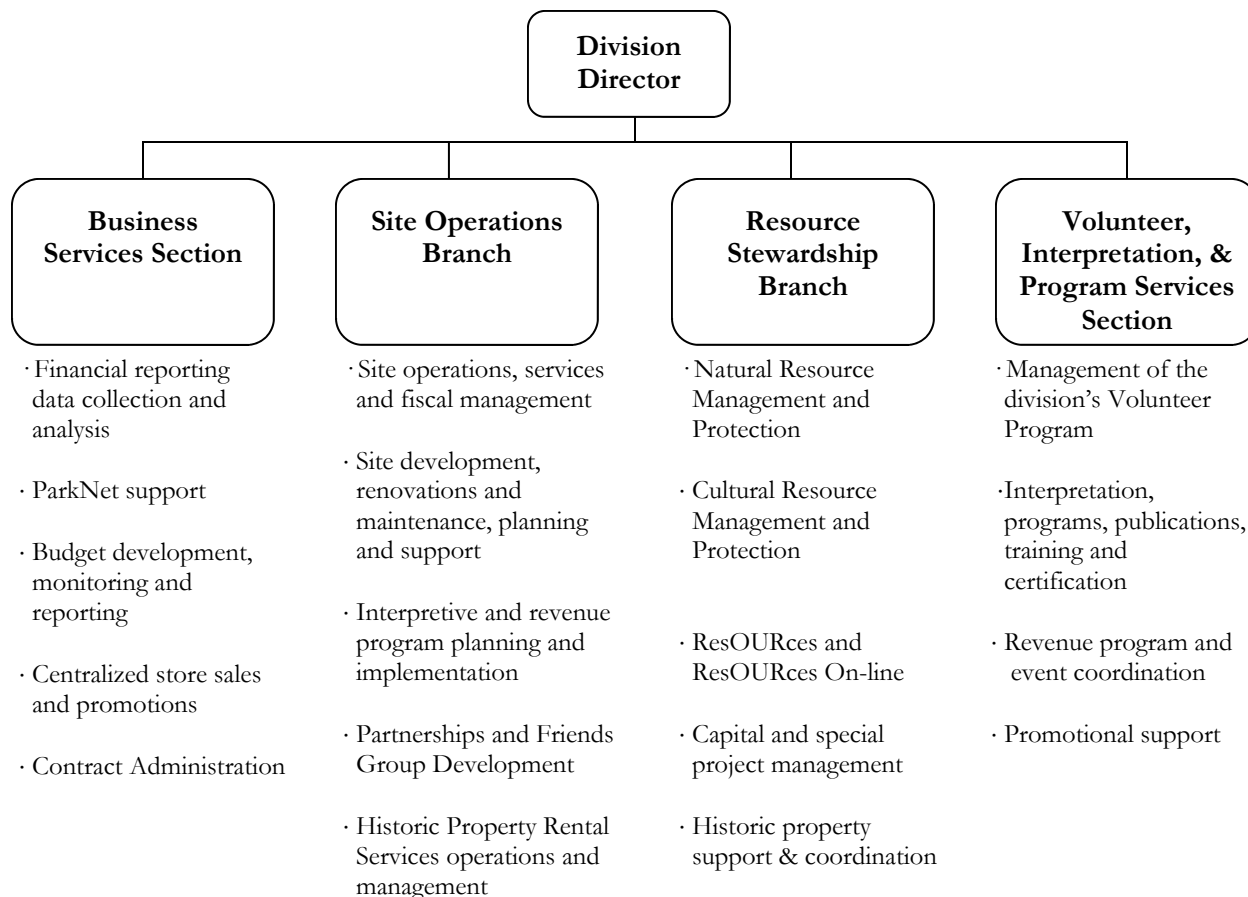
Mission

To identify, protect and interpret the cultural, natural and horticultural resources of Fairfax County and the Fairfax County Park Authority; to encourage the enjoyment, understanding and appreciation of these resources by citizens and visitors; to contribute positively to the sense of community and quality of life in Fairfax County, and to provide community leadership in protecting and maintaining the county’s heritage; to maintain museum accreditation standards and the highest professional standards of stewardship and interpretation.

Fairfax County Park Authority Organizational Chart



Resource Management Division Organizational Chart



Resource Management Division Sites

Historic

Colvin Run Mill Historic Site
Sully Historic Site

Nature/Visitor Centers

Ellanor C. Lawrence Park
Hidden Oaks Nature Center
Hidden Pond Nature Center
Huntley Meadows Park
Riverbend Park

Horticulture

Green Spring Gardens

Farm

Frying Pan Farm Park

Other Properties/Facilities Support

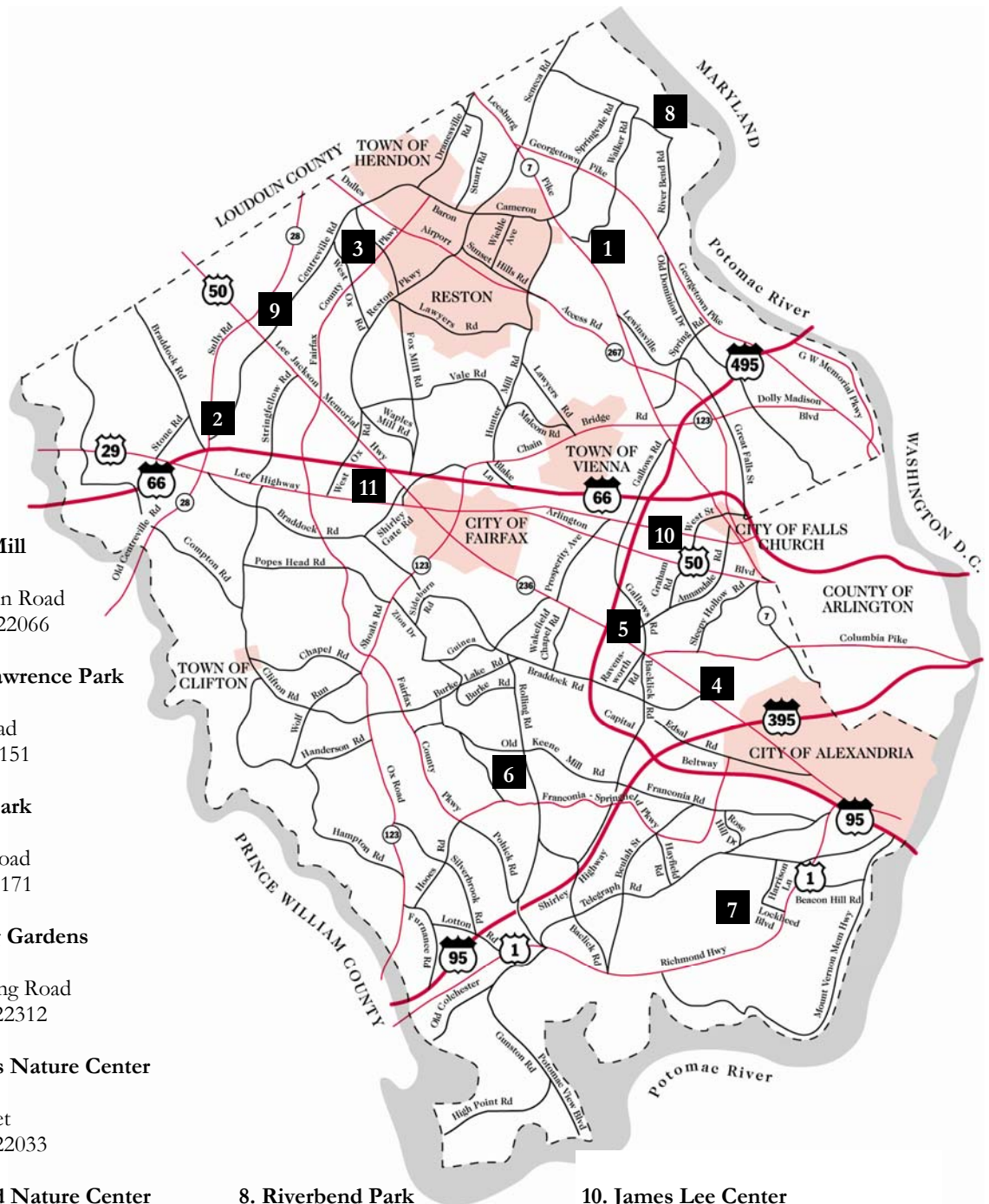
Ashgrove
Cub Run RECenter
Fort Willard Historic Site
Gabrielson Gardens
Lahey Lost Valley Park
Lamond Park
Margaret White Horticultural Park
Marie Butler Levin Preserve
Mount Air Cultural Resource Park
Mount Gilead
The Turner Farm

Historic Property Rental Sites

Cabell's Mill
Clark House
Dranesville Tavern
Great Falls Grange
Hunter House
Old Schoolhouse
Stone Mansion
Wakefield Chapel

*"Volunteering at a nature center is a great way to get away from stress and be in a friendly environment."
- Hidden Oaks Teen Volunteer*

Map



1. Colvin Run Mill
703-759-2771
10017 Colvin Run Road
Great Falls, VA 22066

2. Ellanor C. Lawrence Park
703-631-0013
5040 Walney Road
Chantilly, VA 20151

3. Frying Pan Park
703-437-9101
2709 West Ox Road
Herndon, VA 20171

4. Green Spring Gardens
703-642-5173
4603 Green Spring Road
Alexandria, VA 22312

5. Hidden Oaks Nature Center
703-941-1065
7701 Royce Street
Annandale, VA 22033

6. Hidden Pond Nature Center
703-451-9588
8511 Greeley Boulevard
Springfield, VA 22152

7. Huntley Meadows Park
703-768-2525
3701 Lockheed Boulevard
Alexandria, VA 22306

8. Riverbend Park
703-759-9018
8700 Potomac Hills Street
Great Falls, VA 22066

9. Sully Historic Site
703-437-1794
3601 Sully Road
Chantilly, VA 20151

10. James Lee Center
703-534-3881
2855 Annandale Road
Falls Church, VA 22042

11. Park Authority Headquarters
703-324-8702
12055 Government Center Pkwy.
Fairfax, VA 22035

Selected Site Descriptions

Colvin Run Mill Historic Site

Located seven miles west of Tysons Corner, Colvin Run Mill Historic Site features a restored operational 19th century water-powered gristmill, the miller's house and the early 20th century Colvin Run General Store, the remains of the once thriving community of Colvin Run. Today the site is interpreted in terms of the 19th century American technology of Oliver Evans, inventor and millwright, the growth of communities around centers of commerce, and the work and social activities of area residents. Education programs, tours, and special programs are conducted regularly. Visitors also enjoy shopping in the old general store and picnicking on the grounds. Colvin Run is accredited by the American Association of Museums.

"Being a volunteer is the gift that never stops giving. The experience gives back the joy of service, of learning, and working with marvelous dedicated colleagues."

- Bob, Colvin Run Mill Historic Site

Ellanor C. Lawrence Park

Ellanor C. Lawrence Park, located in Chantilly offers a welcome change of pace from high-speed bordering roadways. The natural and cultural history of the area is evident in every corner of the 600+ acre park. Visitors can spot wild turkey, deer and red fox in the meadow, at Walney Pond or along four miles of meandering trails. A large variety of wildflowers, songbirds and other plant and animal species can be studied. The Walney Visitor Center, whose core dates back to 1780, features live animal and history exhibits and a hands-on area to introduce the public to the park's past and present. Surrounding the center, remains of a springhouse, icehouse and other features link people to the land and offer clues to life on a 250-year old Fairfax County farm.



Jerry volunteers restoring antique farm equipment and giving hayrides at Frying Pan Farm Park.

Frying Pan Farm Park

Frying Pan Farm Park is a 106 acre rural oasis in densely suburban northern Virginia. Five minutes from Dulles Airport, just south of Herndon, visitors come to sample Fairfax County's rich rural heritage at the site's 1930's working farm. Volunteers contribute to the work of caring for draft horses, cows, chickens and other farm animals, driving wagon rides, leading interpretive programs, restoring and repairing farm equipment, researching farm history, leading farm house tours and working at special events. The of Floris School House, Moffet Blacksmith Shop, County Store, Frying Pan Spring Meeting House, and the Kidwell Farm House preserve many of the essential elements of 1930's rural life. The site's equestrian center, with three miles of cross county trails, jump equipment and indoor and outdoor riding rings, attract the area's top horses and riders.

Selected Site Descriptions

Green Spring Gardens

Green Spring Gardens is 27-acre public garden located in Alexandria. The eight acres of demonstration gardens display a range of unique styles, plants, and gardening techniques. Designed to appeal to the home gardener, the selection of gardens complements our educational programs. The site also includes an historic 18th century brick house renovated by architect Walter Mascomber with a designed landscape by American landscape architect, Beatrix Ferrand.

"Volunteering has given me the opportunity to learn more about gardening and the time to meet many different people within the community who likewise enjoy gardening."

- Rita, Green Spring Gardens

Among Green Spring's demonstration gardens are a rock garden, shade garden, children's gardens, edible garden, Virginia native plant garden, water-wise garden and townhouse gardens. A conservatory and indoor exhibits provide year round interest. A wide range of educational programs appeal to both adults and children. Green Spring is accredited by the American Association of Museums and is home to a horticultural library and the National Witch Hazel Collection.

Hidden Oaks Nature Center

Located in the 53-acre Annandale Community Park, Hidden Oaks Nature Center, the first facility of its kind in the area lies just inside the Beltway in the heart of Fairfax County. Acres of woods a stream valley and the Manassas Gap Railroad Bed complement the one third mile loop self guided nature trail. Inside, exhibits highlight the flora and fauna of local urban woodlands. Families enjoy exploring natural history through interactive displays, children's discovery area and live reptile exhibits. Also located in the park is the Fred M. Packard Center, home to civic and arts organizations and a craft gallery.

Hidden Pond Nature Center

Hidden Pond Nature Center is nestled in the busy suburb of Springfield, but visitors here soon forget about the bustle of suburban life. The serene pond and adjacent Pohick Stream Valley Park, with its beautiful Pohick Creek and hundreds of acres of forested floodplain, are sublime reminders of quieter times. In addition to wandering the trails and learning about the pond and stream, visitors enjoy a nature center with exhibits, live animals and many activities.



Arthi, a teen volunteer at Hidden Pond Nature Center, paints the face of fellow volunteer Kathleen during the park's annual Slugfest program.

Selected Site Descriptions

Huntley Meadows Park

Huntley Meadows Park, a 1428-acre wildlife sanctuary in southern Alexandria, is the largest staffed park operated by the Park Authority. It includes mature forest, meadows and a large freshwater wetland. It is one of the most popular birding spots in Northern Virginia. A half-mile boardwalk winds through a wetland abounding with lizard's tail, cardinal flower and rose mallow. Beavers are often seen as evening approaches. An observation tower allows a commanding view of the wetland and its abundant wildlife.

"The best fun is working with and teaching children at Huntley Meadows Park. Knowing that a seed has been planted in the minds of the next generation that will grow into a respect and love of nature is most rewarding."

- Norma, Huntley Meadows

Riverbend Park

Riverbend Park contains 409 acres of hardwood forest and meadows on the banks of the scenic Potomac River in the northern section of Fairfax County. Over two miles of river frontage offer glimpses of waterfowl, songbirds and abundant wildflowers. Bald eagles, bluebirds and yellow throated warblers may all be seen. Exhibits and program at the Riverbend Visitor Center orient visitors to the park with displays about the local plant life, animals, geology and Indian history found in and along the Potomac River.

Sully Historic Site

Sully Historic Site is an oasis of serenity in Western Fairfax County, near Washing Dulles Airport. Rich in history, the 100+ acre site includes the mail dwelling house, outbuildings, slave quarter and grounds. Sully was the 1794 home of Richard Bland Lee who represented Northern Virginia in the first Federal Congress of the United States. He and his family were the first of many who made Sully a home well into the 20th century. The house and outbuildings are restored and furnished to their earliest appearance. Interpretation of the site details the work and life style of a gentleman farmer during the first decade of the 19th century, as well as the work of slaves, indentured servants and tenant farmers. Sully is accredited by the American Association of Museums.



Volunteer Nancy leads children on a nature walk at Riverbend Park.

Selected Section Descriptions

Historic Collections Section

The Historic Collections Section research, interpret, inventory, maintain, purchase and accept donations of authentic pieces relevant to Fairfax County's cultural history. The over 6,000 collection pieces are cataloged and stored in accordance with American Association of Museum standards. The Historic Collections Section is located in the Walney Visitor Center at Ellanor C. Lawrence Park.

"I was hooked the first time I held an artifact in my hand and touched something that had been crafted hundreds of years ago, while an experienced volunteer explained how the design had been created and what we have learned about the place where that little piece of pottery had been found. I felt connected to that place and time and wanted to help ensure that others could continue to learn from the past. I still feel that way every time I am lucky enough to hold a piece of history in my hand."

- Barbara , Cultural Resource Management & Protection

Cultural Resource Management and Protection Section

The Cultural Resource Management and Protection Section provides direction for the preservation and management of cultural resources under the stewardship of the Park Authority. The section reviews and monitors development projects and conducts archaeological surveys and excavations. Over three million artifacts are part of the archaeological collection which is located at the James Lee Center.

Natural Resource Management and Protection Section

The Natural Resource Management and Protection Section provides direction for natural resource management for the 23,500 acres of parkland. The section reviews and monitors development projects to ensure adequate resource protection and is responsible for implementation of the Natural Resource Management Plan. This Plan coordinates agency-wide efforts to achieve the resource protection vision of the Fairfax County Park Authority.

Volunteer, Interpretation and Program Services Section

The Volunteer, Interpretation and Program Services Section direct and coordinate the division volunteer program and provide support for site and section volunteer activities. The section staff also oversee and assist with division interpretive



Philip, an Natural Resource Management volunteer, removes a tire found during a stream valley cleanup.

Benefits

Tax Deductions for Volunteers

As a Resource Management Division volunteer, you may deduct non-reimbursed out-of-pocket expenses directly related to your volunteer service if you itemize deductions. Volunteer service must have been contributed to what the Internal Revenue Service terms a “qualifying organization.” The Park Authority is such a qualifying organization.

The amounts you deduct must be:

- Non-reimbursed
- Directly connected with the services
- Expenses you had only because of the services you gave, and
- Not personal living, or family expenses.

Please note that you may not deduct the value of your volunteer time or service.

For more information, consult Publication #526 “Charitable Contributions” from the Internal Revenue Service.



Rachel, a teen volunteer at Hidden Oaks Nature Center, cares for a corn snake in the live animal exhibits.

Volunteer Insurance Program

As a Resource Management Division volunteer, you are covered by the Fairfax County Volunteer Insurance Program on an “EXCESS” basis. If you have personal insurance, your insurance is the primary carrier and the coverage provided by the county is in excess of your primary coverage. If you have no insurance coverage, the county policy becomes the primary carrier.

The Volunteer Insurance Program consists of three types of insurance: accident, personal liability, and automobile liability insurance.

Accident Insurance

The accident insurance provides excess accident medical insurance if you are injured while traveling directly to and from your work location or participating in volunteer-related activities. The insurance pays up to \$25,000 for hospitalization, medical treatment and licensed nursing care required as the result of a covered accident. If you have no other insurance, the county insurance becomes primary.

Accidental death and dismemberment coverage is also provided. Under this specific coverage, the insurance company will pay \$2,500 for loss of life, \$2,500 for loss of both hands, feet or eyes, \$1,250 for loss of either hand, foot or either eye, and \$625 for loss of thumb and index finger of either hand.

Personal Liability Insurance

The personal liability insurance provides excess coverage for a personal injury or property damage claim from the performance of your volunteer duties. The policy provides a \$1,000,000 per occurrence limit of liability. If you have no other personal liability coverage, the county insurance becomes primary.

Benefits

Automobile Liability Insurance

The automobile liability insurance provides excess coverage for a bodily injury or a property damage automobile liability claim arising from your volunteer activities. This coverage includes accidents that occur while driving directly between your residence and work location. The limit for excess automobile liability is \$500,000 per accident.

The excess automobile liability policy requires you to carry insurance of at least \$50,000 per accident or the state minimum limits of liability. This policy provides excess liability protection over the minimum state requirements or your insurance policy, whichever is greater.

Claims Filing Procedure

When a volunteer is injured, or is sued, all claims should be immediately directed, through the site/section volunteer coordinator, to the county's Claims Manager in the Risk Management Division. The Claims Manager will notify the insurance carrier and be available to make certain the claim is handled promptly and efficiently. Please see your site/section volunteer coordinator should a claim occur involving property damage or injury so that you may receive the details on how to proceed and receive the proper forms for filing a claim.

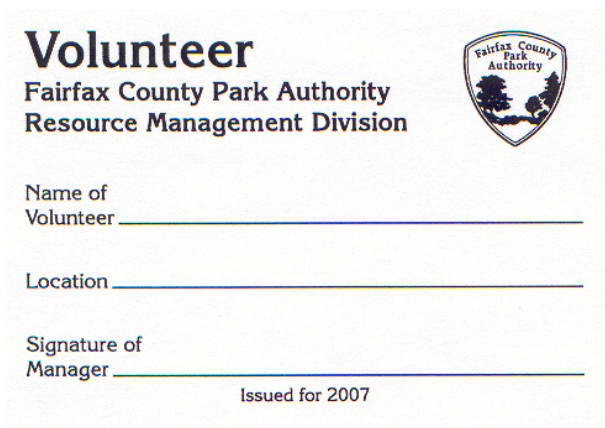
"My favorite moment of volunteering for Fairfax County Park Authority was being able to watch a baby cow being born at Frying Pan. It was amazing and I would not have gotten to be there if I had not been a volunteer."

- Susan , Frying Pan Farm Park (teen)

Volunteer ID Card

Volunteer ID Cards are issued by the RMD Volunteer Services Coordinator to all core volunteers. New ID cards are issued annually. The card lists the volunteer's name, work location, and a summary of benefits. Volunteers should use their ID card to receive benefits. Benefits apply to current and active division volunteers. Replacement cards can be obtained by contacting the RMD Volunteer Services Coordinator.

A sample of the front and back of the card:



This card entitles an RMD volunteer to:
Free:

- Admission to the Antique Car Show, Quilt Show and Sale, tours of Colvin Run Mill and Sully Historic sites and wagonrides at Frying Pan Farm Park (Vol + family)
- RECenter classes (space available basis.) Must have worked at least 32 hrs and maintain a consistent rate of eight hrs/week (Vol)
- Admission to Water Mine Family Swimmin' Hole (Vol)

Discounts:

- 10% discount at RMD shops -- donated goods excluded (Vol)
- 25-admission RECenter pass at the county employee rate (Vol)

Memberships:

- Fairfax County Federal Credit Union (Vol)
- Fairfax County Employee Fitness and Wellness Center (Vol)

Benefits

Fairfax County Employees Credit Union

All Resource Management Division core volunteers are invited to join the Fairfax Federal Credit Union. For more information contact the FCECU at www.fairfaxcu.org or 703-218-9900.

Park Authority Classes

Eligible active Resource Management Division Volunteers are able to register for certain Park Authority classes. The requirements are:

- Volunteers must have worked a minimum of 32 hours and maintain an average of eight hours per week.
- Volunteers must complete the FCPA Employee & Volunteer Registration Form. Ask your site volunteer coordinator for this form.
- Volunteers are limited to registration and participation in one class per Parktakes issues, with a maximum of four classes per year.
- Each class must meet minimum enrollment through regular registration before placement of a volunteer.
- Each class must have space available to accommodate a volunteer. At no time will a volunteer be placed in a class if it results in exclusion of a paying registrant. Classes will not be permitted to exceed maximum safe enrollment to accommodate volunteers.
- Volunteer registrations will not be processed until 10 working days prior to the start date of the class.
- Volunteers are not eligible to enroll in contracted classes. In general a class is contracted if it not at a Park Authority RECenter, however contact the Registration Office to verify that a particular class is eligible.

RECenter Discount Pass

Volunteers may purchase a RECenter pass at the Fairfax County Employee Discount Rate. This is a pass for 25 admissions to the RECenters that must be used within 24 months of date of sale. For the current rate, ask your site/section volunteer coordinator to consult the Fee Schedule in the Park Service Division Resource Book

Employee Fitness and Wellness Center

Volunteers may join Fairfax County's Employee Fitness and Wellness Center. The Center is located at 12000 Government Center Parkway and offers a fitness room with weight training and cardiovascular equipment as well as classes. For rate information, contact the EFWC Director at 703-324-5590.



Volunteer Tom teaches a student how to use simple machines at Colvin Run Mill Historic Site.

Benefits

Site/Event Admission & Discounts

Volunteers may receive:

- Free admission to the Water Mine Family Swimmin' Hole at Lake Fairfax Park
- A 10% discount at division nature centers and museum shops (donated goods excluded)

Volunteers and their families may receive:

- Free admission to the two annual RMD events held at Sully Historic Site: the Antique Car Show and the Quilt Show and Sale
- Free tours at Sully Historic Site and Colvin Run Mill Historic Site
- Free hayrides at Frying Pan Farm Park

Volunteers must present their ID cards to receive any of the above benefits.

Personal Benefits

Resource Management Division volunteers experience many personal benefits as a result of their volunteer work including:

- Meeting people with similar interests
- Learning new skills
- Building a resume
- Contributing to their community
- Exploring new career paths

"I have been volunteering for several years now. I have truly enjoyed the friends I have made at the park. We have a great time doing nature walks with the scouts and day campers. I've gained valuable leadership experience and learned new skills."

- Brian, Ellanor C. Lawrence Park (teen)



Beekeeper Dane tends the beehives at Ellanor C. Lawrence Park.

"I started volunteering within a month of my retirement and it has provided a nice point of stability in my schedule. I have met so many wonderful people – both those I work with and the people who visit the site. On top of that, I've enjoyed the opportunity to learn something new."

- Kitty, Colvin Run Mill Historic Site



Joyce, a volunteer Docent, leads "The Forgotten Road" tour at Sully Historic Site's representative slave cabin.

Frequently Asked Questions

Q: What should I wear?

A: At Sully Historic Site and Historic Green Spring, “office-type” clothing is required. At all other sites and sections, appropriate dress is casual slacks and comfortable shoes. You will receive a name tag identifying you as a volunteer. Uniform shirts are also provided for volunteers working with the public or in public areas. For safety reasons, certain clothing may be required based on the tasks being performed such as blacksmithing or field work. In addition, volunteers at Sully Historic Site may be asked to dress in period costume.

Q: What if I cannot come on my scheduled day?

A: You are an important part of the staff. Some sites request that you find a replacement. If you cannot find a replacement, contact your site/section volunteer coordinator as soon as possible. If you cannot call or email yourself, please have a family member do so.

Q: How old must I be to volunteer?

A: Age restrictions vary depending upon the site/section and volunteer positions.

“Volunteering at Sully gives me the opportunity to meet people of all ages from all over the U.S. and even international visitors. Each tour is a new experience. You never know what questions they’ll ask so I enjoy expanding my own knowledge of Sully’s history and American history so I can answer their questions. It gives me a wonderful outlet to share my love of history with others.”

- Betty, Sully Historic Site

Q: What happens if it snows?

A: Fairfax County Park Authority programs, classes and events will be canceled based upon the opening/closing decision of the Fairfax County Public Schools. If the schools are closed all day, agency programs, classes and events are canceled. Delayed school openings impact early morning programs and early school closings impact afternoon and evening programs. If you lead tours, conduct programs or provide front-line services, call your site to check the schedule and conditions.

Q: What if I am injured while volunteering?

A: Every effort is made to reduce the potential risk to volunteers during their work with the Resource Management Division. In order to be prepared if an accident should occur, please be familiar with the Volunteer Insurance Program section of the handbook.

Q: What training is provided for volunteers?

A: An orientation highlighting the Park Authority and the division is provided on an annual basis. Site training, field trips and workshops are also offered. We welcome your ideas for additional training.

Q: Will my work as a volunteer be reviewed?

A: Yes, we evaluate our volunteer staff (especially interpreters) to maintain professional standards. The procedure includes a self-evaluation and an evaluation by a site/section staff member followed by an informal discussion.

Q: Do volunteers receive recognition?

A: Yes, awards are presented to volunteers at the division and site/section levels. Outstanding volunteers are nominated for awards at the county, state, and national levels.

Frequently Asked Questions

Q: Are there events planned for volunteers?

A: Yes, social activities, field trips, and recognition events are conducted specifically for volunteers at the division and site/section levels throughout the year.

Q: May I assume added responsibilities ?

A: Yes, volunteers are offered leadership positions to develop and manage programs and projects at the division and site/section levels.

Q: Why are my volunteer hours recorded?

A: The number of hours donated by volunteers along with qualitative measurements of volunteer contributions, reflect the community's commitment to fulfilling the division's mission. The hours worked and results achieved by division volunteers are used by FCPA management to highlight the accomplishments of volunteers and showcase the RMD Volunteer Program.

Q: Does the Park Authority have a sexual harassment policy?

A: Sexual harassment is a violation of the Civil Rights Act of 1964, as amended, and is a prohibited practice within Fairfax County. The Park Authority will abide by the law and supervisors will, when appropriate, take firm disciplinary actions in accordance with this policy to ensure that our agency meets its responsibilities to staff.

Q: May I work at more than one site or section?

A: Yes, you may work at as many sites or sections as your schedule allows. If you would like to change locations or positions, please talk to you site/section volunteer coordinator.



Angela, a Teaching Docent at Sully Historic Site, demonstrates spinning fibers.

Q: If I have a concern, what do I do about it?

A: We want your volunteer's experience to be a positive one. Should you have a problem or concern, please meet with your site/section volunteer coordinator to discuss the matter. You may also contact the division volunteer coordinator.

Q: What if I can no longer volunteer?

A: Please alert your site/section volunteer coordinator of your decision to retire. We realize you won't be volunteering forever and appreciate the service that you have given!

"Volunteering gives me the opportunity to share my enthusiasm for the natural world by teaching people about nature and promoting a caring and protective feeling towards it. It also gives me a chance to meet a variety of interesting people."

- Carolyn, Hidden Oaks Nature Center

Volunteer Positions and Contacts

Below is a sample of volunteer positions available throughout the Resource Management Division. This is not an exhaustive list. Contact the site/section volunteer coordinators for currently available opportunities.

Colvin Run Mill Historic Site

Volunteer Coordinator: Mary Allen

703-759-2771

Blacksmith
Gardener
Store Assistant
Teaching Docent
Touring Docent

Ellanor C. Lawrence Park

Volunteer Coordinator: John Shafer

703-631-0013

Beekeeper
Gardener
Junior Park Naturalist
Nest Box Monitor
Program Leader
Resource Naturalist
Volunteer-on-Duty

Frying Pan Farm Park

Volunteer Coordinator: Sherry Bizette

703-437-5318

Animal Caretaker
Antique Farm Equipment Repairer
Beekeeper
Blacksmith
Gardener
Hayride Driver
Program Leader
Special Events Assistant
Store Assistant
Touring Docent
Volunteer-On-Duty

Green Spring Gardens

Volunteer Coordinator: Vanessa Tillett

703-642-5173

Gardener
Historic Green Spring Host
Librarian
Market Master
Master Gardener
Program Leader
Special Events Assistant
Volunteer-on-Duty

Hidden Oaks Nature Center

Volunteer Coordinator: Janis Jeffers

703-941-1065

Gardener
Junior Park Naturalist
Nest Box Monitor
Program Leader
Resource Naturalist
Senior Animal Caretaker
Volunteer-on-Duty

Hidden Pond Nature Center

Volunteer Coordinator: Jim Pomeroy

703-451-9588

Gardener
Junior Park Naturalist
Program Leader
Volunteer-on-Duty

"I find a great joy in being able to be part of young children and adults' memories. Nothing feels better than to have a child come up to you after a tour or event and say 'Wow, this was so much fun!' You can't put a price on that."

- Charlotte, Sully Historic Site (teen)

Volunteer Positions and Contacts

Huntley Meadows Park

Volunteer Coordinator: Ann Stat

703-768-2525

Handyperson

Herbarium Assistant

Nest Box Monitor

Program Leader

Resource Naturalist

Special Events Assistant

View from the Tower Naturalist

Volunteer-on-Duty

Riverbend Park

Volunteer Coordinator: Jim Dewing

703-759-9018

Program Leader

Volunteer-on-Duty

Sully Historic Site

Volunteer Coordinator: Kiersten Conley

703-437-1794

Gardener

Living History Interpreter

Special Event Assistant

Teaching Docent

Touring Docent

Cultural Resource Management and Protection

Volunteer Coordinator: Bob Wharton

703-534-3881

Archaeologist

Natural Resource Management and Protection

Volunteer Coordinator: Meghan Fellows

703-324-8586

Invasive Management Area Leader

Natural Resources Assessor

Water Quality Monitor



Volunteer Jennie bird watching on the boardwalk at Huntley Meadows Park.

Volunteer, Interpretation and Program Services

Mona Enquist-Johnston, Manager

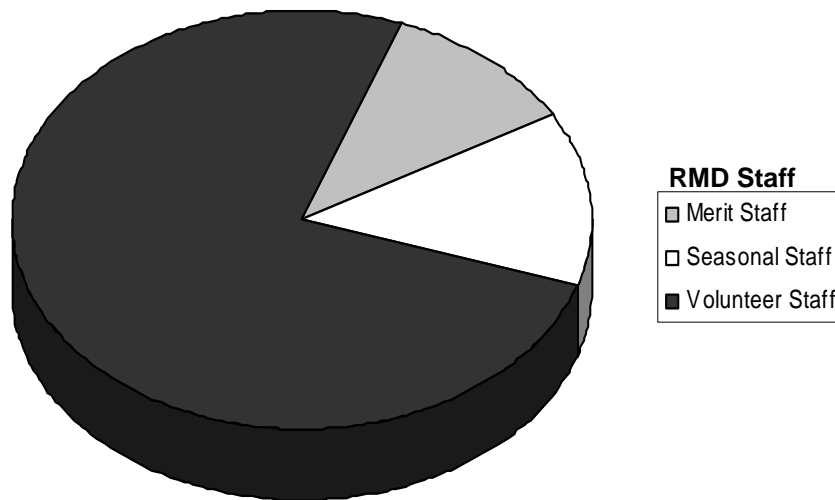
703-324-8513

Erin Chernisky, Volunteer Services Coordinator

703-324-8750

Thanks!

You are part of a group of over 700 volunteers that together comprise 75% of the Resource Management Division staff. Without you, the outstanding resource stewardship, educational programs, site maintenance and beautification, research projects, and visitor contact would not be possible. You truly do power our parks! The paid staff of the Resource Management Division is grateful for the time and talents you so generously donate to our parks.



And a special thanks to the many volunteers who helped with the revision of this handbook. Their feedback and insight during the review process was invaluable.