



Parks, Recreation, Open Space, and Access (PROSA) Strategy

Update

Jai Cole, Executive Director

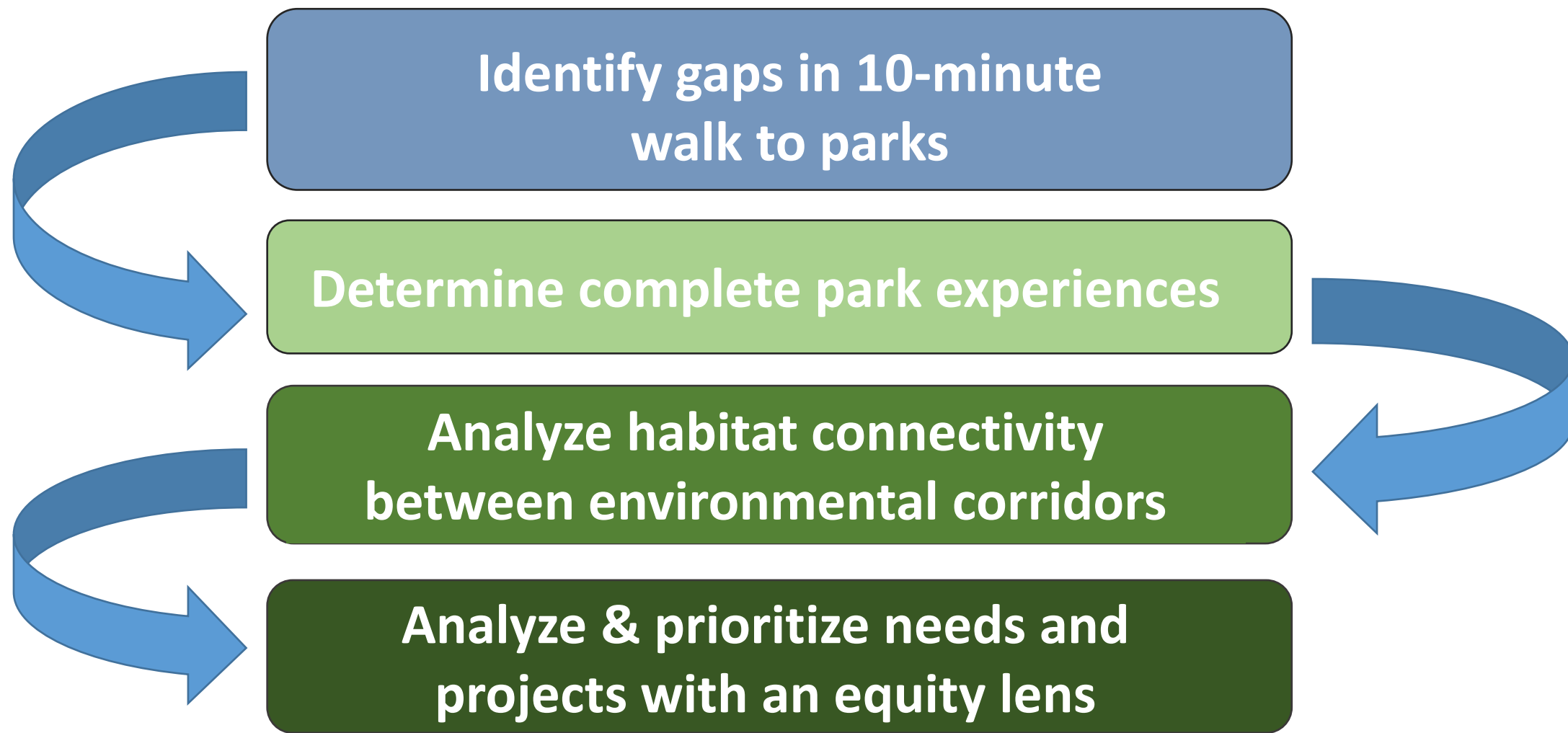
Stephanie Cornejo, Long Range Planning Section Supervisor
Fairfax County Park Authority

June 13, 2023



PROSA Objectives

PROSA advances County Strategic Plan priorities



Public Engagement

Phase 1: October – December 2022 – Values of the community
Bridging Phases 1 & 2: Focus Groups
Phase 2: June/July 2023 – Draft excerpts of the PROSA Strategy





Help Improve Your Park System!

The Fairfax County Park Authority (FCPA) is developing the Parks, Recreation, Open Space, and Access (PROSA) Strategy which will provide a framework for equitable access to FCPA parks and the park system.

Opportunities to Provide Input

- 1 Participate in a virtual public meeting
- 2 Take the community survey
- 3 Sign up for project updates



Giúp Cải Thiện Hệ thống Công viên của bạn!

Cơ quan Công viên hạt Fairfax (FCPA) đang phát triển Chiến lược Công viên, Giải trí, Không gian mở, và Tiếp cận được (PROSA) nhằm mang lại giải pháp giúp các công viên của FCPA và hệ thống công viên được tiếp cận rộng rãi và công bằng hơn.

Cơ hội để Đóng góp ý kiến

- 1 Tham gia vào buổi họp trực tuyến
- 2 Thực hiện khảo sát cộng đồng
- 3 Đăng ký ngay để được cập nhật thêm về dự án.




PROSA Parks • Recreation • Open Space • Access  

<https://bit.ly/fcpa-prosa>

A Fairfax County Va. 9800-0000-0000

Parks, Recreation, Open Space, and Access (PROSA) 전략 커뮤니케이션 툴킷



커뮤니케이션 툴킷은 페어팩스 카운티 공원 당국(Fairfax County Park Authority)의 PROSA(Parks, Recreation, Open Space, and Access) 전략을 널리 알리는데 도움을 드립니다. 여기에는 전자 메일 통신, 뉴스레터 및 소셜 미디어를 위한 샘플 텍스트가 포함됩니다. 질문이나 의견이 있으신 경우 PROSA@publicinput.com 으로 문의주시기 바랍니다.

뉴스레터/이메일/텍스트 도어 포스트

페어팩스 카운티 공원 당국은 다가오는 Parks, Recreation, Open Space, and Access (PROSA) 전략에 대한 의견을 구하고 있습니다. PROSA 는 개선된 공원 접근성과 레크리에이션 경험의 균형을 위한 로드맵을 제공할 것입니다. 가상 공개 회의 및 커뮤니티 설문 조사를 포함하여 PROSA 에 대해 알아보고 의견을 제공할 수 있는 여러 기회가 있습니다. 프로젝트, 공개 회의 일정에 대한 자세한 사항이나 커뮤니티 설문조사 참여 및 프로젝트 업데이트 등록을 원하시는 경우 <https://bit.ly/fcpa-prosa> 를 방문하세요.

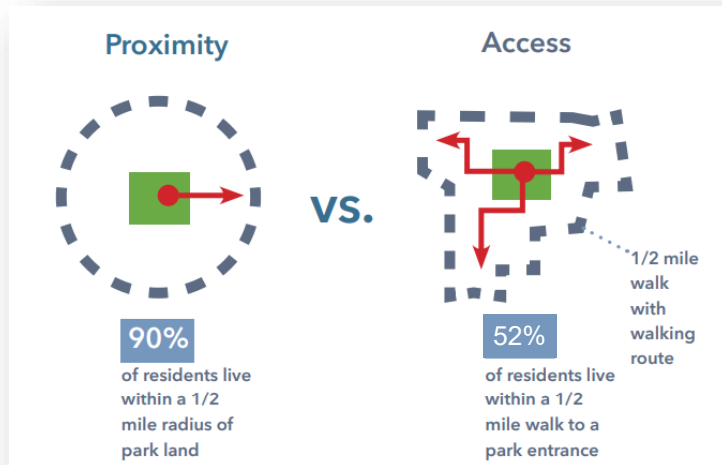
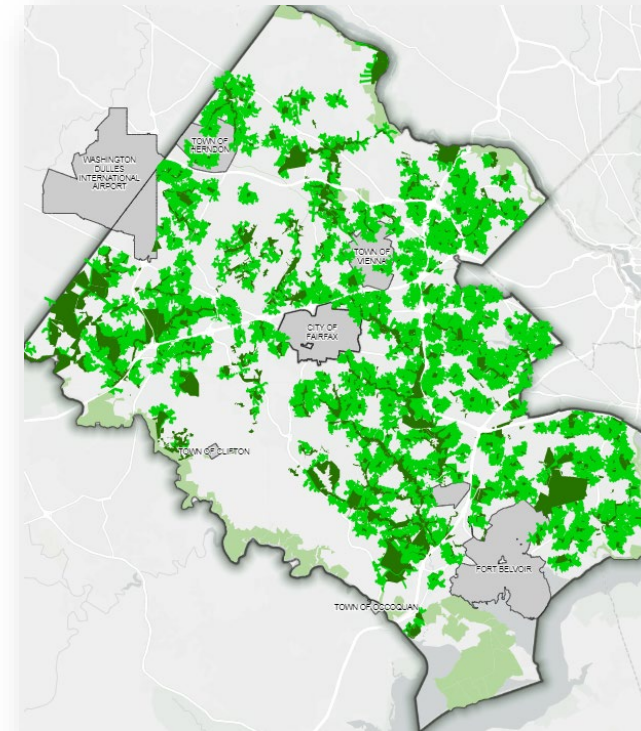
샘플 트위터 게시물

페어팩스 카운티 공원의 미래 모습이 궁금하신가요? 공원 당국이 다가오는 PROSA (Parks, Recreation, Open Space, and Access) 전략을 통해 공평한 공원 접근이 가능하도록 개선하기 위해 어떤 노력을 하고 있는지 알아보세요: <https://bit.ly/fcpa-prosa>.

공원에 더 쉽게 접근할 수 있기를 바라십니까? 공원 당국이 다가오는 PROSA (Parks, Recreation, Open Space, and Access) 전략을 통해 공평한 공원 접근이 가능하도록 개선하기 위해 어떤 노력을 하고 있는지 알아보세요: <https://bit.ly/fcpa-prosa>.

10-minute Walk Analysis

Goal: Ascertain who can and cannot access an FCPA park within a 10-minute walk from their home and provide strategies to expand walkability access.



+/- 52% of residents can access one or more FCPA parks within a **10-minute walk** from their home.

Complete Park Experiences

Goal: Determine the primary experiences categories, analyze the types of experiences at all parks, and provide recommendations as to which parks could improve on the balance of experiences.

- Everyone should have access to a variety of experiences at FCPA parks within a 10-minute walk or 5-minute drive from their home
- Primary experience categories:
 - active recreation
 - passive/contemplative recreation
 - social gathering recreation
 - natural/cultural recreation
- All parks will be given a “park score” to understand the current state/balance of primary experiences



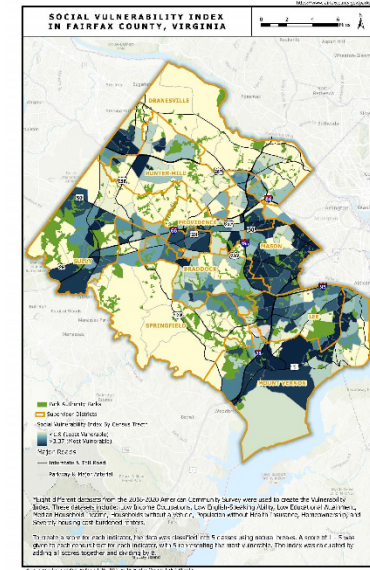
Habitat Connectivity

Goals: Identify which areas have no or little habitat connectivity, provide strategies to expand habitat connectivity for potential/future parkland acquisition, and identify existing park sites where habitat health should be improved.



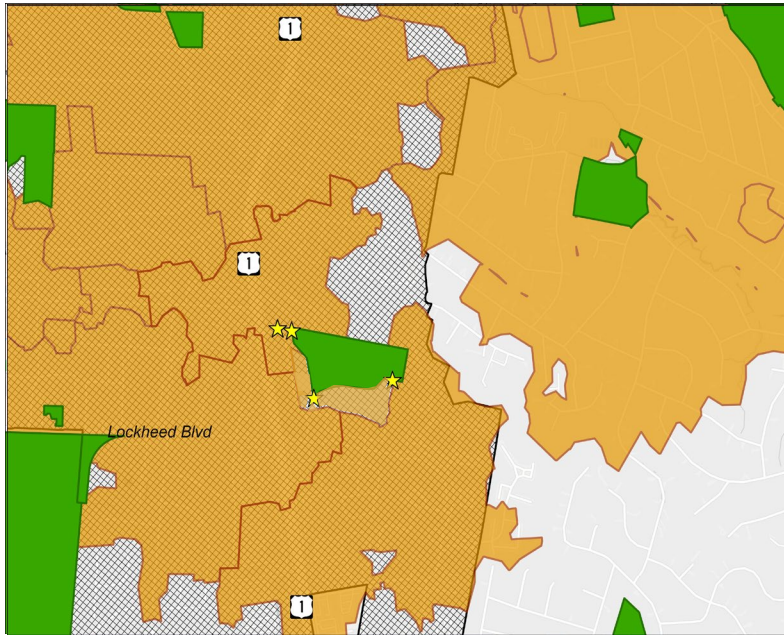
Equity Analysis

- One Fairfax is the foundation for the equity analysis
- Utilize the Block Groups data for a granular, neighborhood approach
- Vulnerability Index Indicators:

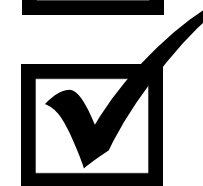


Low Income Occupations	Households without a Vehicle
Low English-Speaking Ability	Population without Health Insurance
Low Educational Attainment	Homeownership
Median Household Income	Severely Cost-burdened Renter

Real World Example: North Hill Park



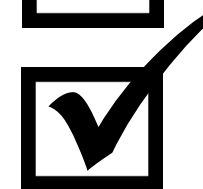
10-Minute Walk



Complete Parks



Habitat Connectivity



Equity

Legend



FCPA Parks



10-minute
walk to FCPA
park entrance



PAREI Opportunity
Areas

Prescriptions



Add natural surface trailheads

Add amenities in parks

Acquire new parkland

Add park entrances

Crosswalks

Whole park development

Mid-block crossings

PROSA in Practice: FCPA Bond Categories

Area	Number	Examples
Repairs and Renovations		<ul style="list-style-type: none"> • Rec Center System Replacements • Field Irrigation Systems • Playground replacements
Land Acquisition	10 acres	<ul style="list-style-type: none"> • New Land Opportunities in Rapidly Urbanizing Areas
Natural and Cultural Resources Workplans		<ul style="list-style-type: none"> • Wetlands Restorations • Archeological Excavations
New Park and Facility Projects	6 Parks	<ul style="list-style-type: none"> • Mastenbrook Grants • New Community Parks
Minor New Construction	4-5 projects	<ul style="list-style-type: none"> • Picnic Shelters • New Trails
Major New Facilities	2-3 projects	<ul style="list-style-type: none"> • Audrey Moore Rec Center Renovation • Franconia and Providence Rec Center Refreshes