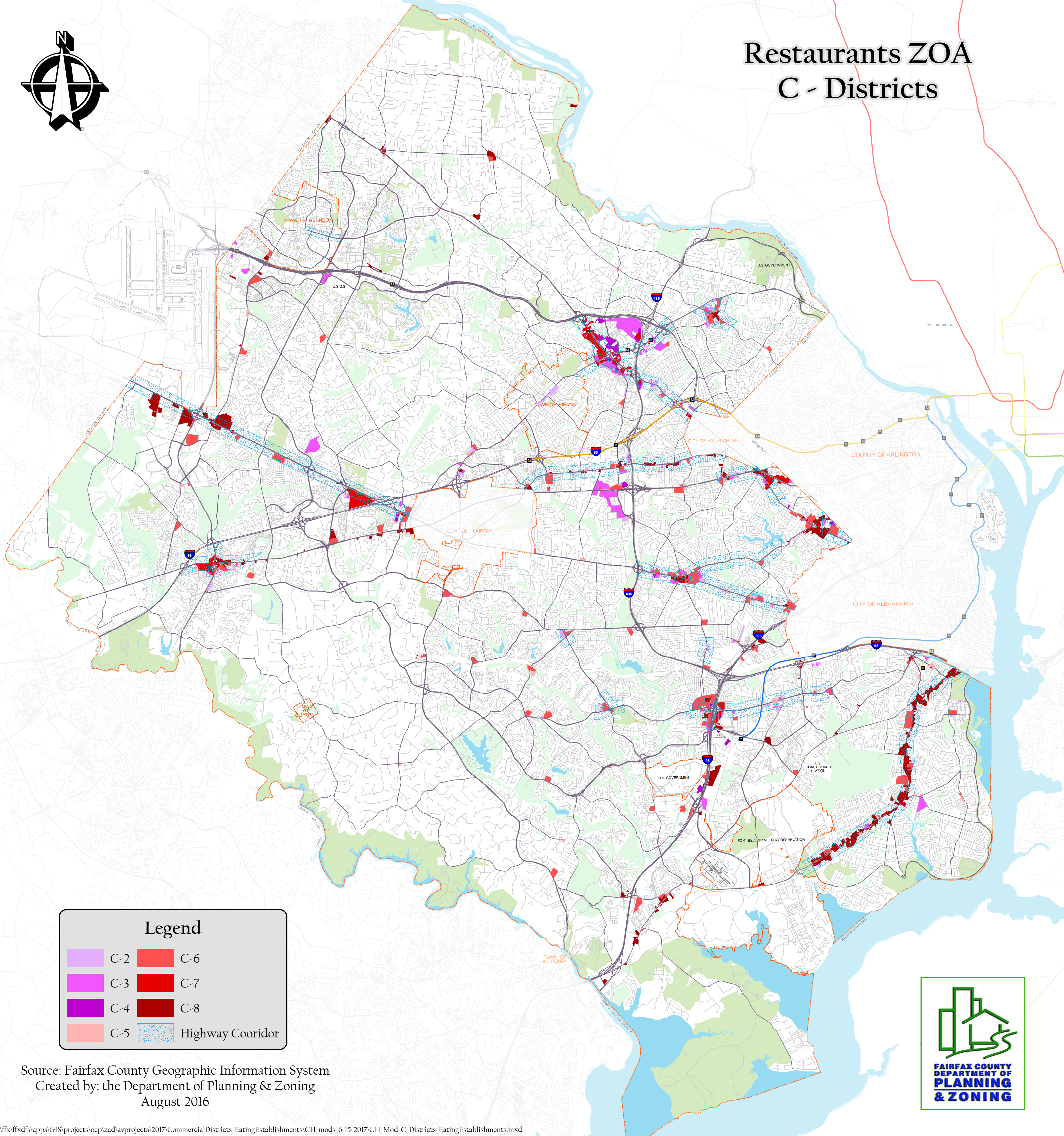

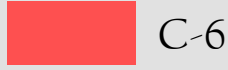










# Restaurants ZOA C - Districts



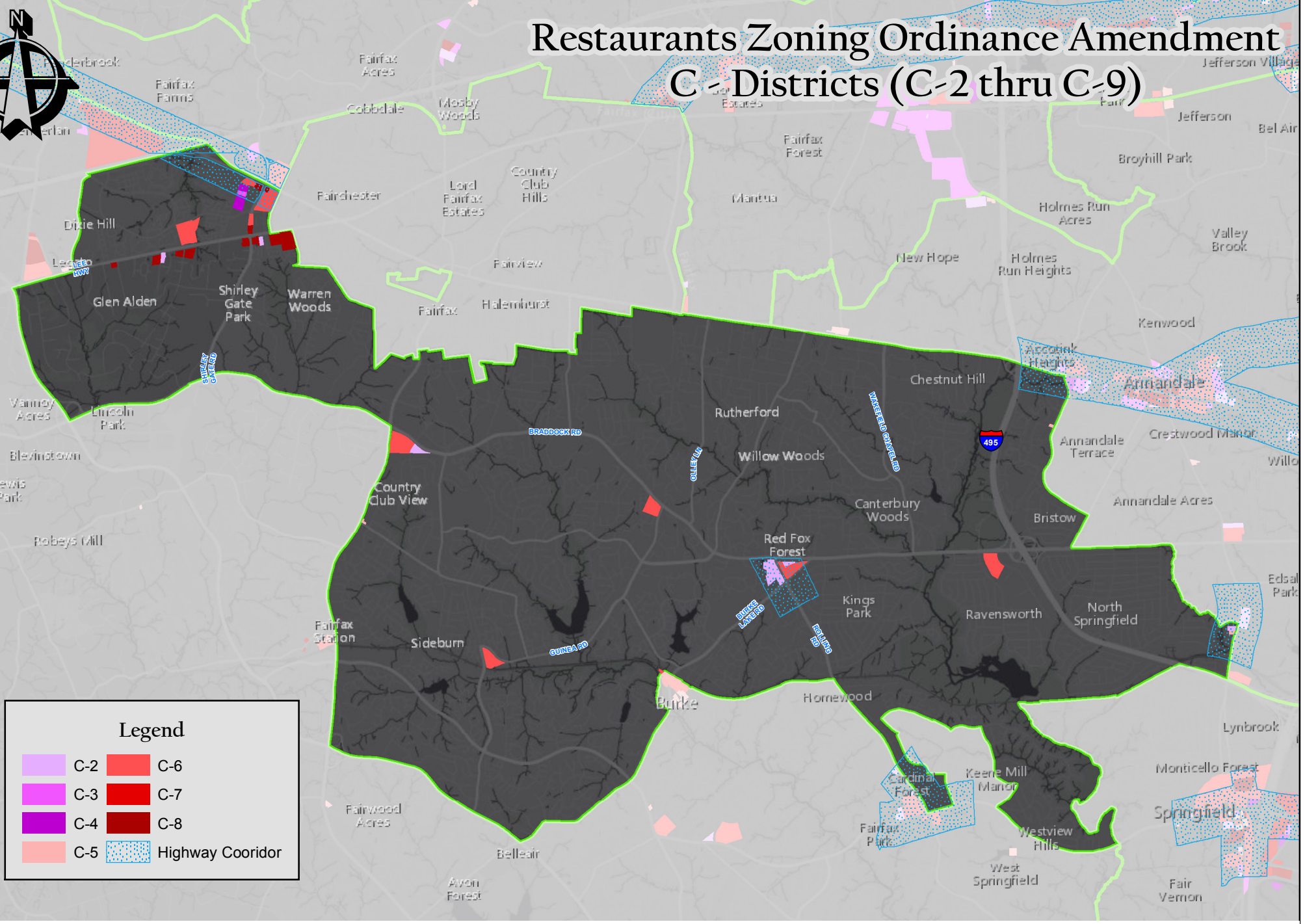
### Legend

|   |     |   |                  |
|---|-----|---|------------------|
|  | C-2 |  | C-6              |
|  | C-3 |  | C-7              |
|  | C-4 |  | C-8              |
|  | C-5 |  | Highway Corridor |

Source: Fairfax County Geographic Information System  
Created by: the Department of Planning & Zoning  
August 2016



# Restaurants Zoning Ordinance Amendment C - Districts (C-2 thru C-9)



| Legend |     |  |                  |
|--------|-----|--|------------------|
|        | C-2 |  | C-6              |
|        | C-3 |  | C-7              |
|        | C-4 |  | C-8              |
|        | C-5 |  | Highway Corridor |

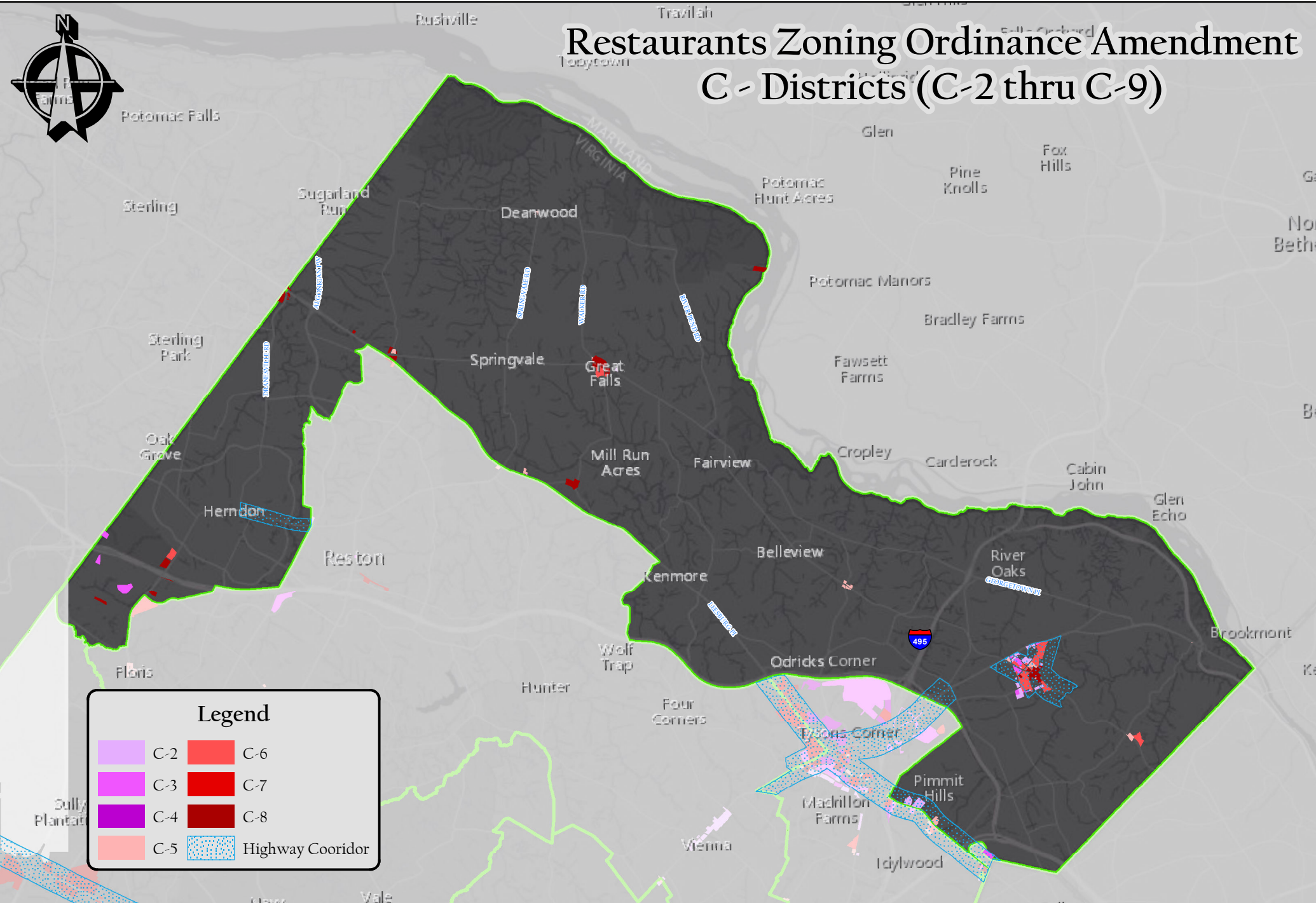
Source: Fairfax County Geographic Information System  
 Created by: the Department of Planning & Zoning  
 June 2017

## Braddock District





# Restaurants Zoning Ordinance Amendment C - Districts (C-2 thru C-9)

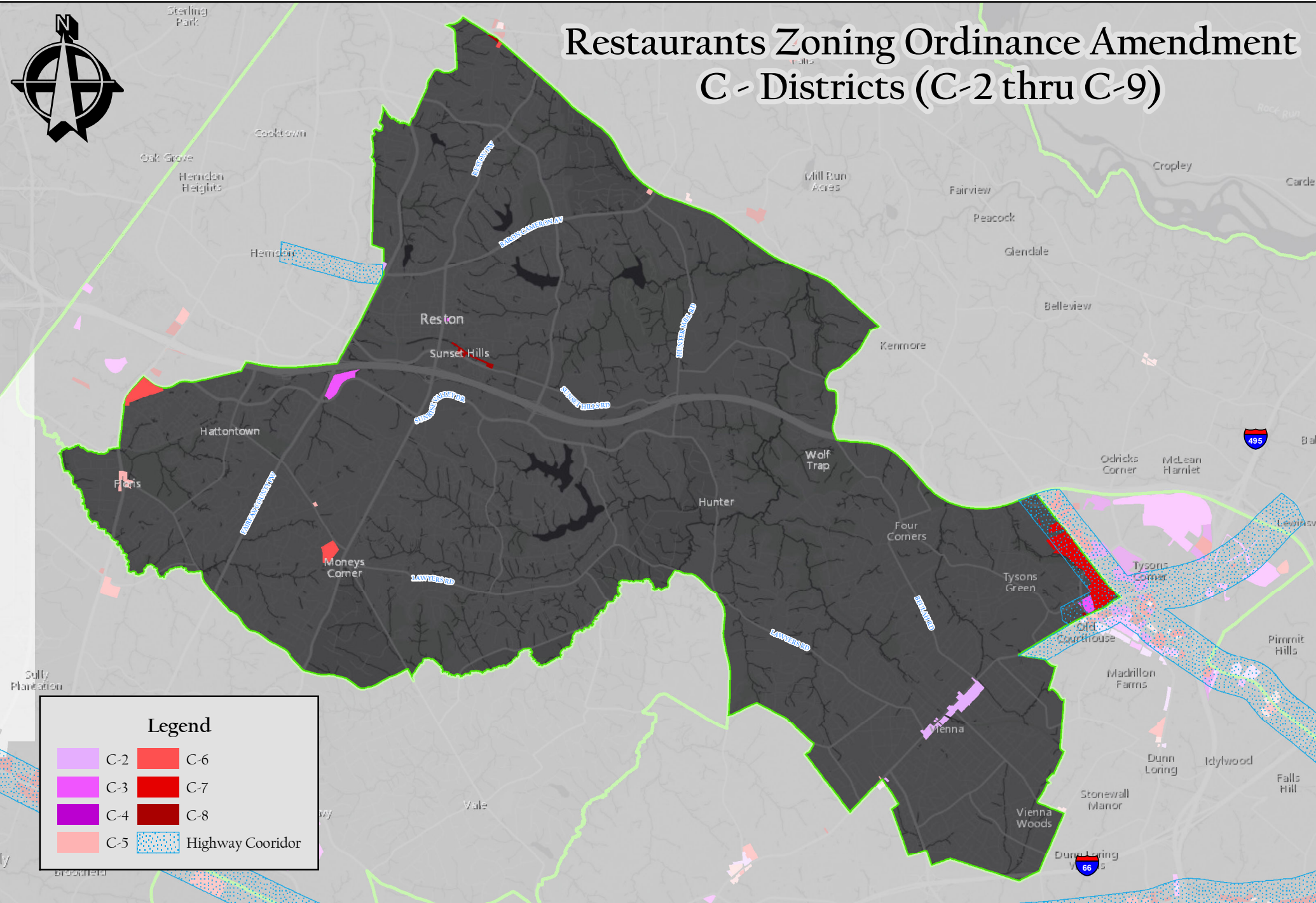


Source: Fairfax County Geographic Information System  
Created by: the Department of Planning & Zoning  
June 2017

## Dranesville District



# Restaurants Zoning Ordinance Amendment C - Districts (C-2 thru C-9)



| Legend |     |  |                  |
|--------|-----|--|------------------|
|        | C-2 |  | C-6              |
|        | C-3 |  | C-7              |
|        | C-4 |  | C-8              |
|        | C-5 |  | Highway Corridor |

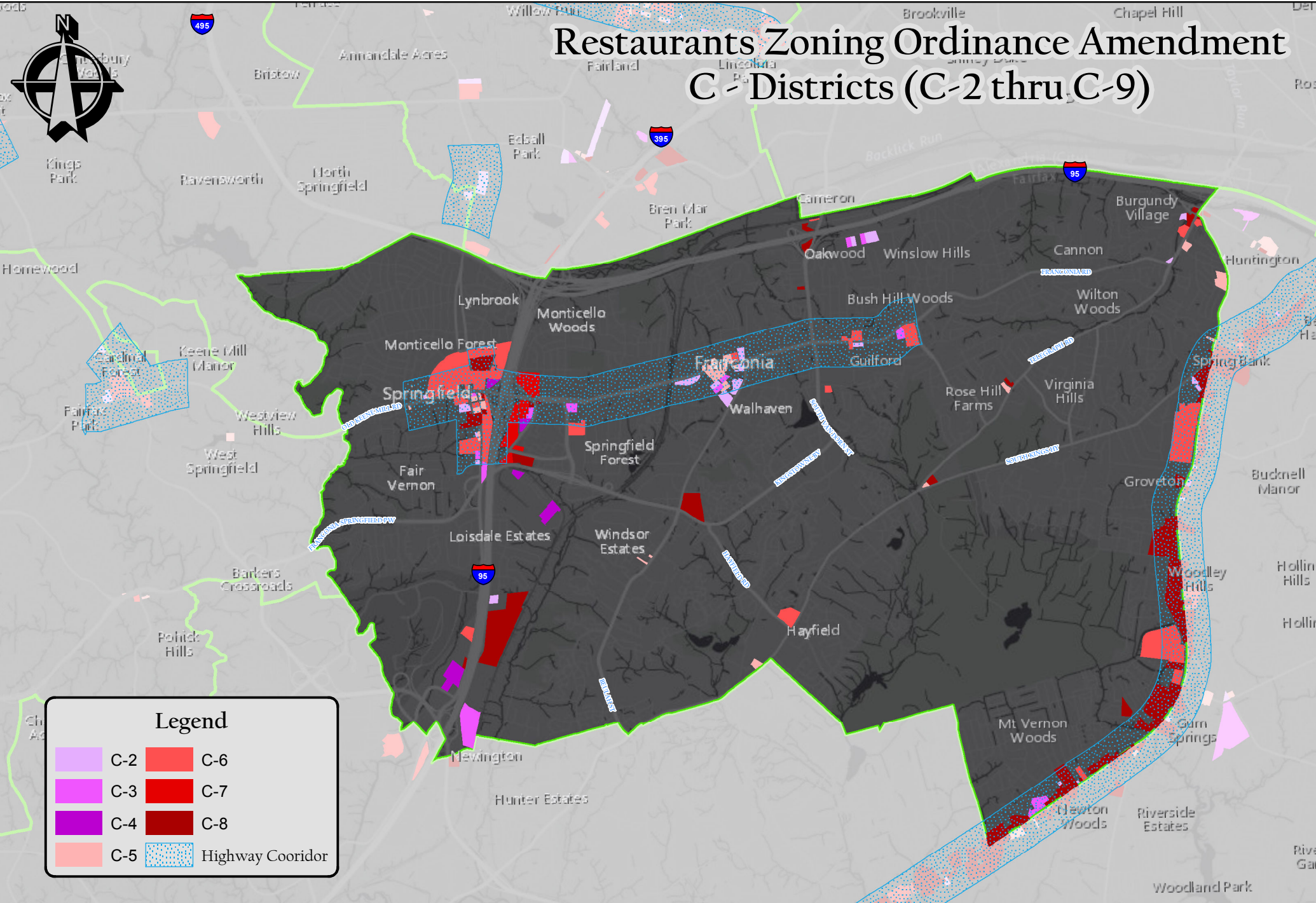
Source: Fairfax County Geographic Information System  
 Created by: the Department of Planning & Zoning  
 June 2017

## Hunter Mill District



G:\projects\ocp\zad\av\projects\2017\CommercialDistricts\_EatingEstablishments\C\_Districts\_EatingEstablishments\_HM.mxd

# Restaurants Zoning Ordinance Amendment C - Districts (C-2 thru C-9)



**Legend**

|  |     |  |                  |
|--|-----|--|------------------|
|  | C-2 |  | C-6              |
|  | C-3 |  | C-7              |
|  | C-4 |  | C-8              |
|  | C-5 |  | Highway Corridor |

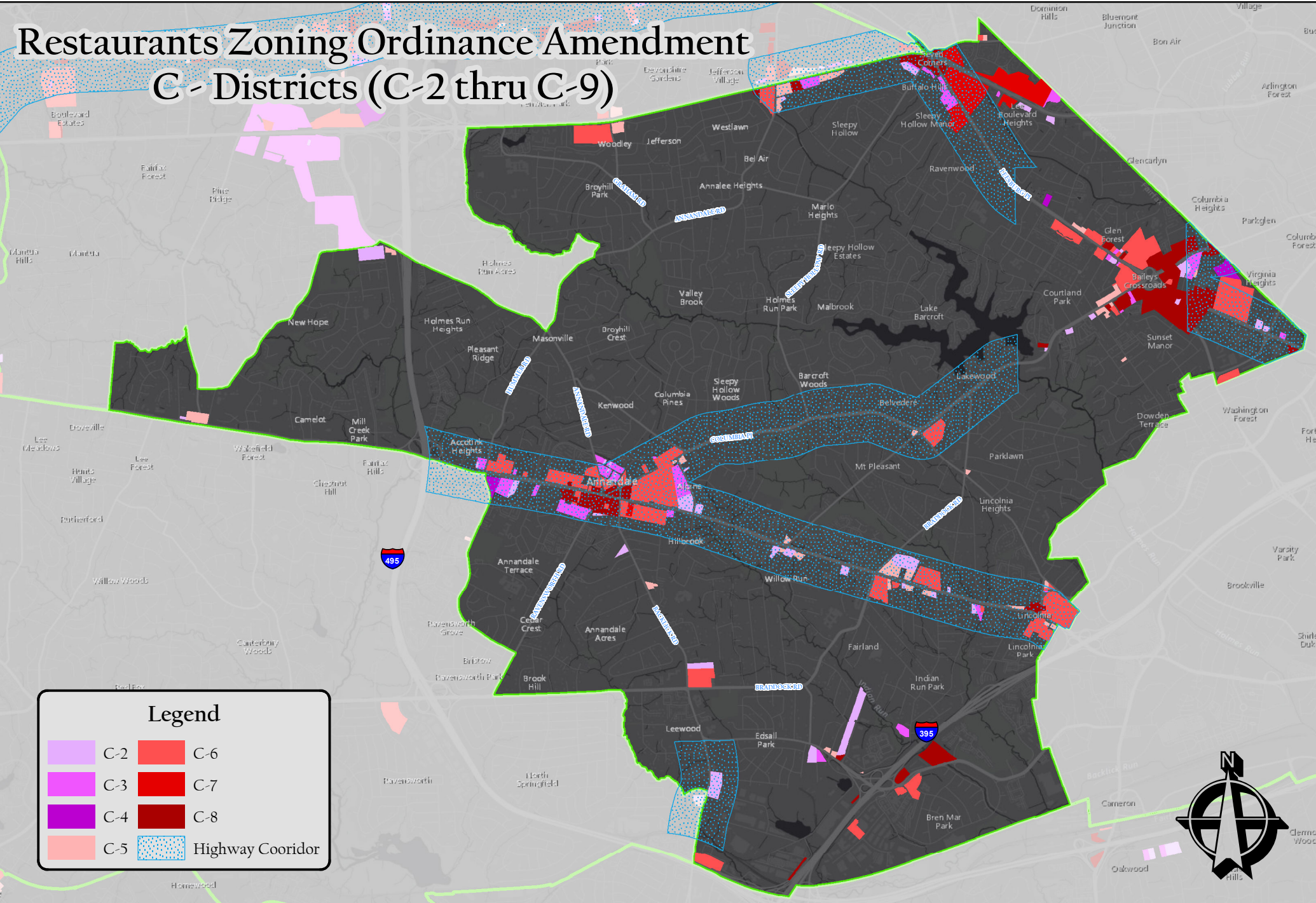
Source: Fairfax County Geographic Information System  
 Created by: the Department of Planning & Zoning  
 June 2017

Lee District







# Restaurants Zoning Ordinance Amendment

## C- Districts (C-2 thru C-9)



**Legend**

|  |     |   |                  |
|--|-----|---|------------------|
|  | C-2 |  | C-6              |
|  | C-3 |  | C-7              |
|  | C-4 |  | C-8              |
|  | C-5 |  | Highway Corridor |

Source: Fairfax County Geographic Information System  
 Created by: the Department of Planning & Zoning  
 June 2017

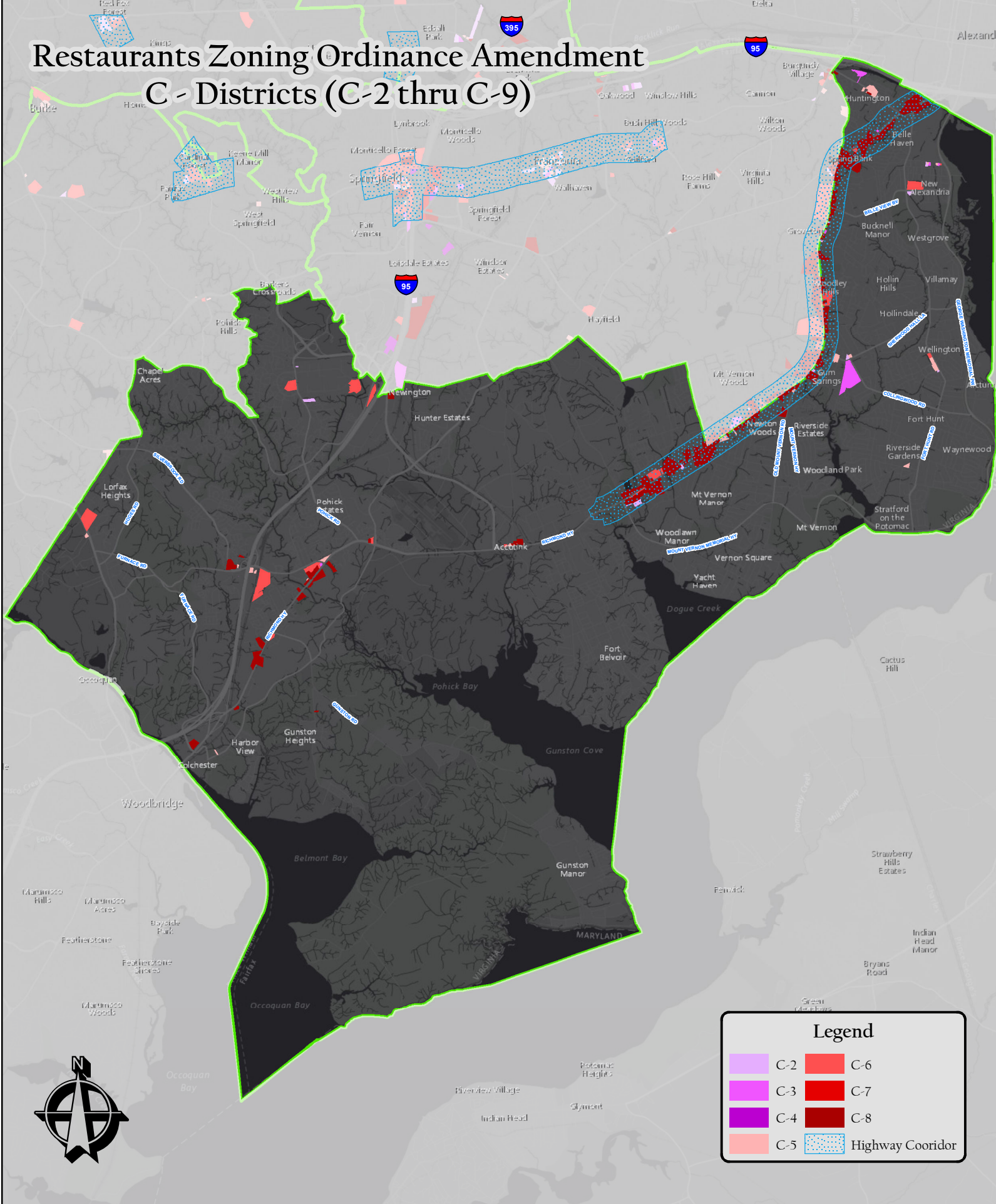
### Mason District



G:\projects\oop\zad\av\projects\2017\CommercialDistricts\_EatingEstablishments\C\_Districts\_EatingEstablishments\_MA.mxd

# Restaurants Zoning Ordinance Amendment

## C - Districts (C-2 thru C-9)



**Legend**

|  |     |  |                  |
|--|-----|--|------------------|
|  | C-2 |  | C-6              |
|  | C-3 |  | C-7              |
|  | C-4 |  | C-8              |
|  | C-5 |  | Highway Corridor |



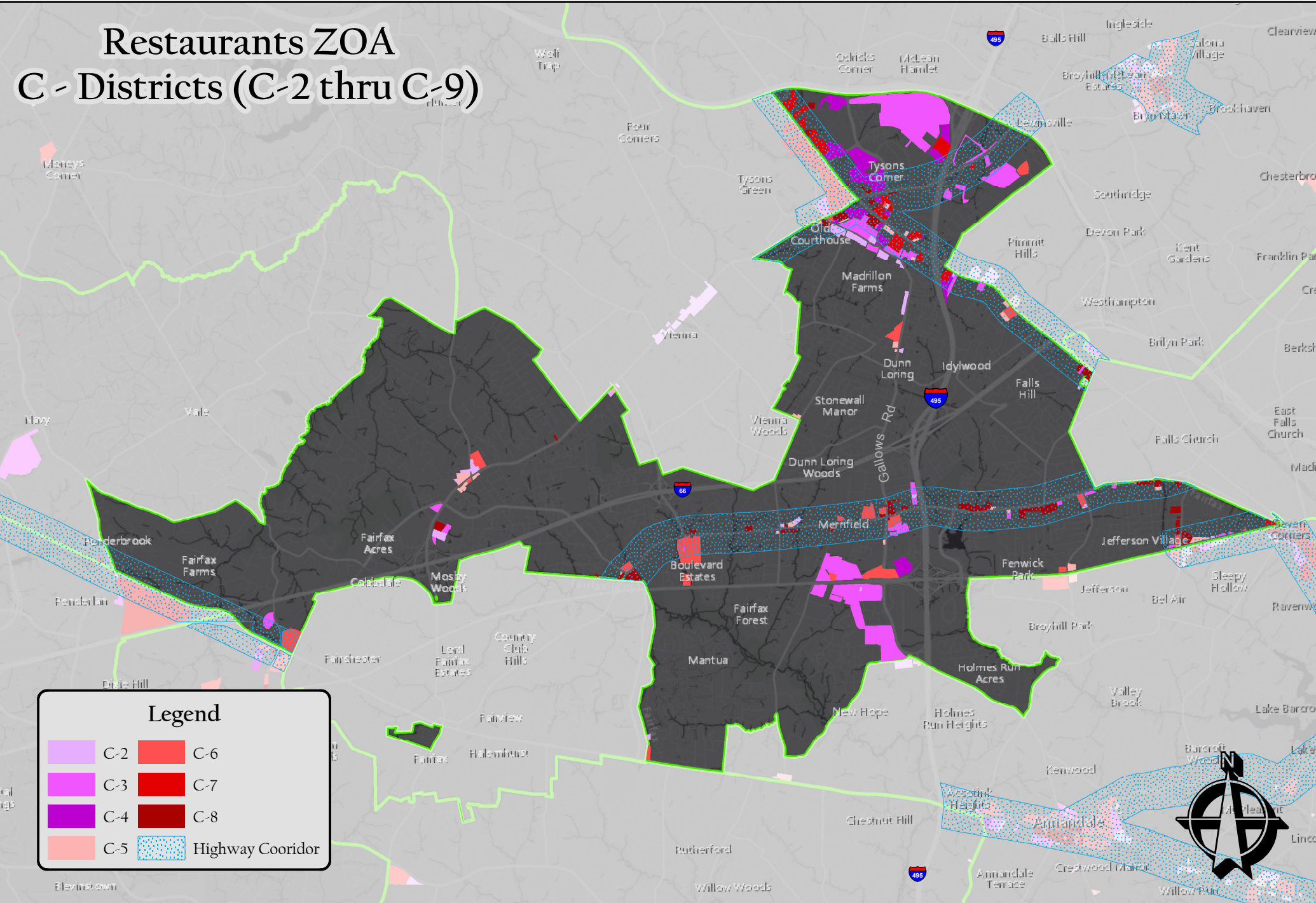
Source: Fairfax County Geographic Information System  
 Created by: the Department of Planning & Zoning  
 June 2017

Mount Vernon District



G:\projects\oep\zad\avprojects\2017\CommercialDistricts\_EatingEstablishments\C\_Districts\_EatingEstablishments\_MV.mxd

# Restaurants ZOA C-Districts (C-2 thru C-9)



**Legend**

|   |   |
|---|---|
| <span style="display: inline-block; width: 15px; height: 15px; background-color: #E6E6FA; border: 1px solid black;"></span> C-2 | <span style="display: inline-block; width: 15px; height: 15px; background-color: #FF0000; border: 1px solid black;"></span> C-6   |
| <span style="display: inline-block; width: 15px; height: 15px; background-color: #800080; border: 1px solid black;"></span> C-3 | <span style="display: inline-block; width: 15px; height: 15px; background-color: #8B0000; border: 1px solid black;"></span> C-7   |
| <span style="display: inline-block; width: 15px; height: 15px; background-color: #4B0082; border: 1px solid black;"></span> C-4 | <span style="display: inline-block; width: 15px; height: 15px; background-color: #800000; border: 1px solid black;"></span> C-8   |
| <span style="display: inline-block; width: 15px; height: 15px; background-color: #FFB6C1; border: 1px solid black;"></span> C-5 | <span style="display: inline-block; width: 15px; height: 15px; background: repeating-linear-gradient(45deg, transparent, transparent 2px, blue 2px, blue 4px); border: 1px solid black;"></span> Highway Corridor |



Source: Fairfax County Geographic Information System  
 Created by: the Department of Planning & Zoning  
 June 2017

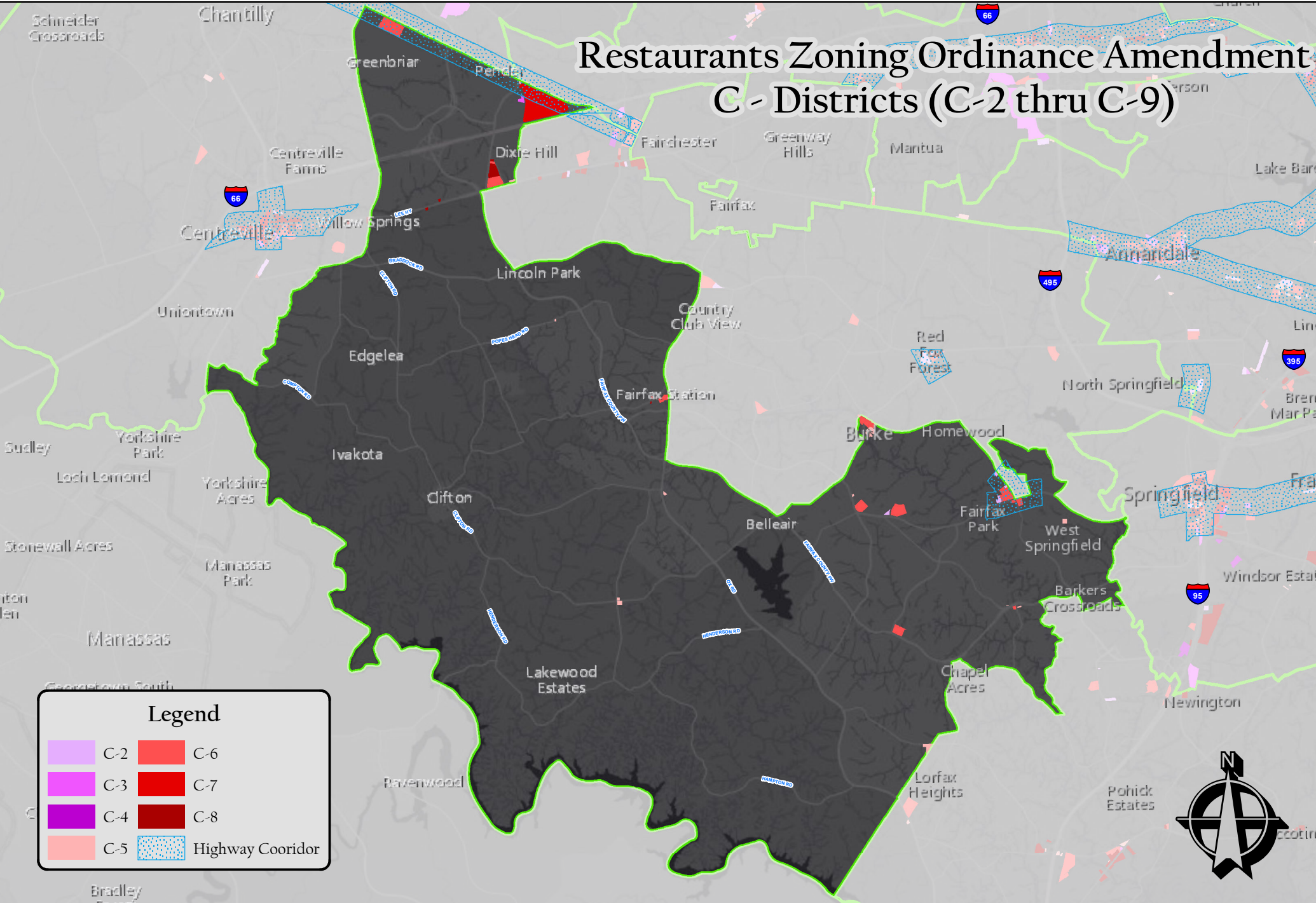
## Providence District









\\fx\fxdfs\apps\GIS\projects\ocp\zad\av\projects\2017\CommercialDistricts\_EatingEstablishments\CH\_mods\_6-15-2017\CH\_Mod\_C\_Districts\_EatingEstablishments\_PR.mxd



# Restaurants Zoning Ordinance Amendment C - Districts (C-2 thru C-9)



| Legend   |     |   |                  |
|--|-----|---|------------------|
|  | C-2 |  | C-6              |
|  | C-3 |  | C-7              |
|  | C-4 |  | C-8              |
|  | C-5 |  | Highway Corridor |



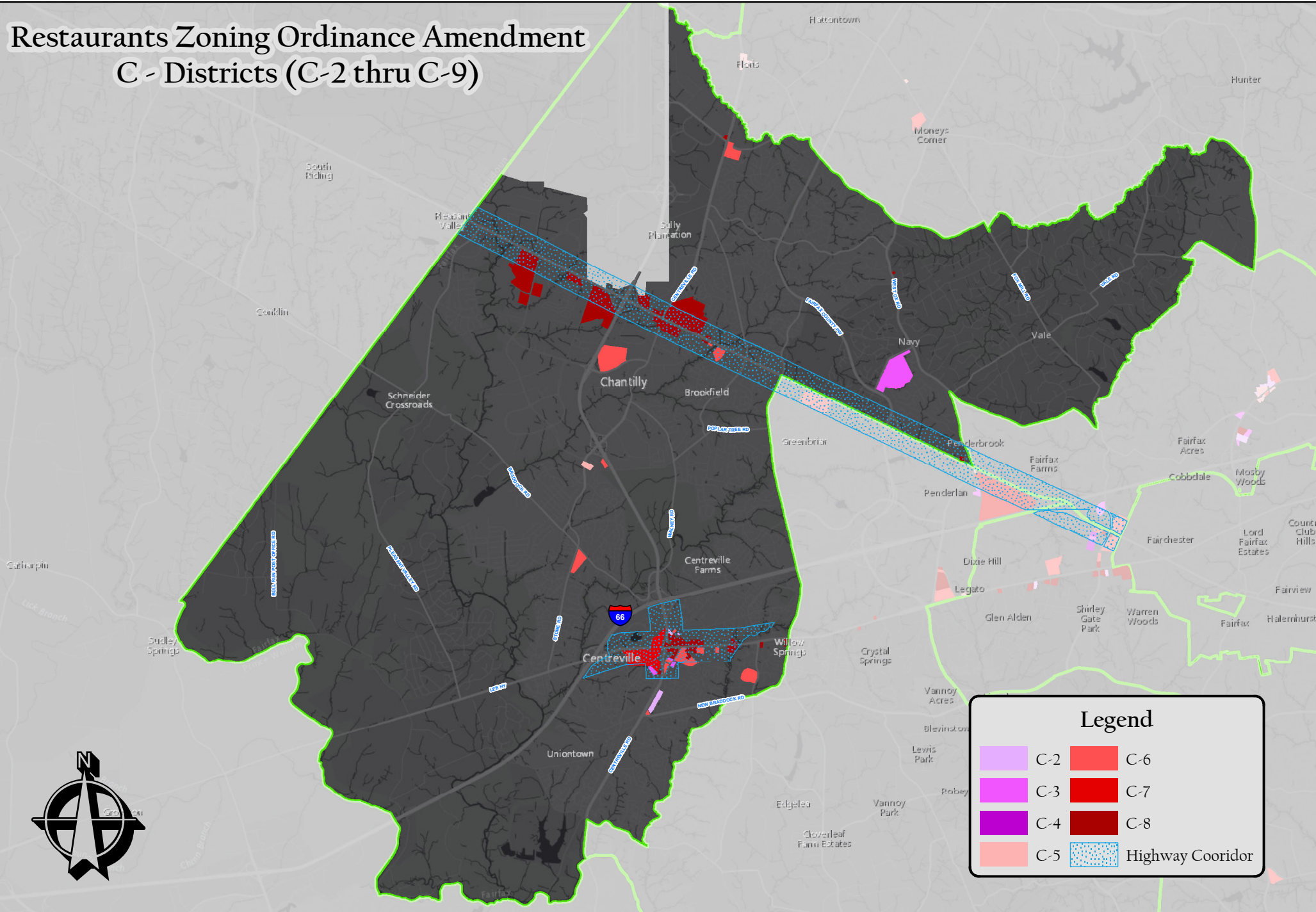
Source: Fairfax County Geographic Information System  
Created by: the Department of Planning & Zoning  
June 2017

## Springfield District



# Restaurants Zoning Ordinance Amendment

## C - Districts (C-2 thru C-9)



Source: Fairfax County Geographic Information System  
 Created by: the Department of Planning & Zoning  
 June 2017

# Sully District

