



21st Century Homeless Shelter System

Update

Dean Klein, Director
Office to Prevent and End Homelessness

March 7, 2017

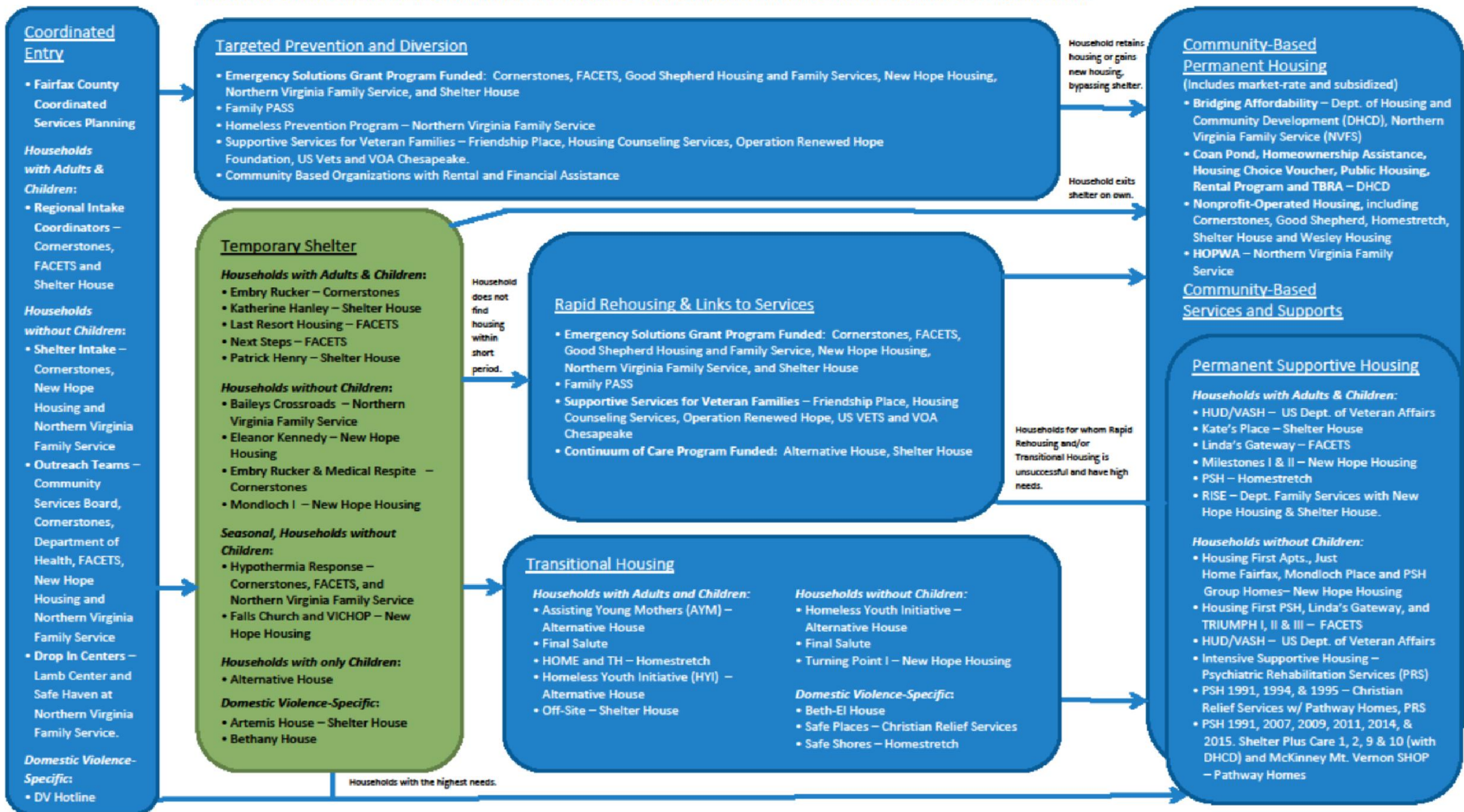


Vision of Shelter and Support Services

Housing crisis response for literally homeless and those in imminent risk of becoming homeless

- ❖ Temporary Shelter
- ❖ Prevention
- ❖ Rapid Rehousing
- ❖ Emergency Services
- ❖ Medical Bed Units
- ❖ Permanent Supportive Housing

**FAIRFAX-FALLS CHURCH COMMUNITY PARTNERSHIP TO PREVENT AND END HOMELESSNESS
HOUSING CRISIS RESPONSE SYSTEM FLOW CHART & ORGANIZATIONS PROVIDING HOMELESS ASSISTANCE**





System Redesign Successes

Making Homelessness:

- ❖ **Rare**—fewer people experience homelessness
- ❖ **Brief**—shorter lengths of homelessness
- ❖ **Non-recurring**—more people remain housed



Existing Shelter Facilities

- ❖ Bailey's Crossroads (1987)
- ❖ Eleanor Kennedy (1904/1986)
- ❖ Embry Rucker (1987)
- ❖ Patrick Henry (1952/1985)
- ❖ Katherine K. Hanley (2007)
- ❖ Mondloch House I (1978)



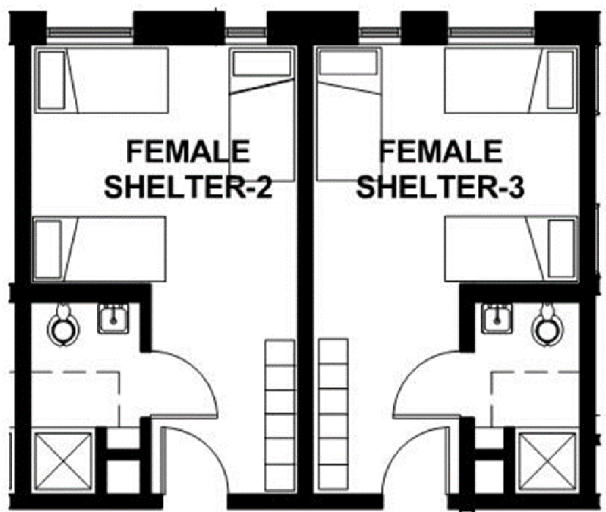
New Shelter Facility Model

- ❖ Temporary Shelter
- ❖ Emergency Services
- ❖ Medical Beds
- ❖ Permanent Supportive Housing Units
- ❖ Flexible activity spaces for multiple/shared functions/services

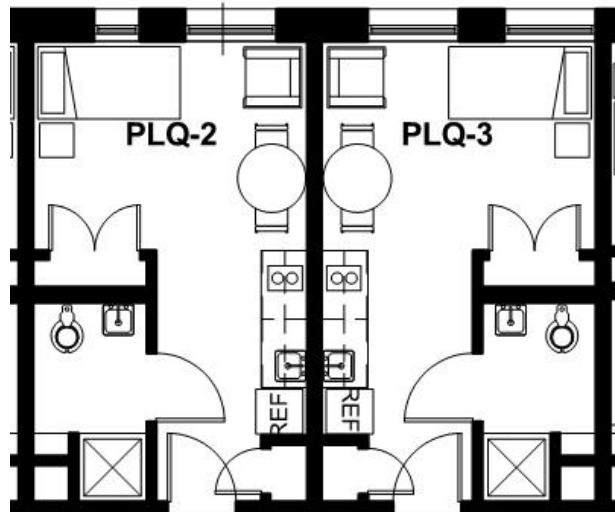


New Shelter Facility Model

❖ Flexible space design to allow for future adaptation from emergency use to permanent supportive housing use



Shelter Units



Housing Units



Upcoming Shelter Projects

2016 Bond Referendum approved \$48 million for shelters

Bailey's Shelter:

- ❖ Replacement facility on a new site at 5914 Seminary Rd
- ❖ First shelter based on new combination emergency shelter/ permanent supportive housing model



Upcoming Shelter Projects

Bailey's Shelter continued:

- ❖ Currently in land use (2232/SE)/early design phase
- ❖ 52 emergency beds for single adults (incl. 4 medical beds)
- ❖ 18 permanent supportive housing units
- ❖ Occupancy projected for late Fall 2019



Upcoming Shelter Projects

Eleanor Kennedy Shelter:

❖ Renovation of the existing facility leased from the U.S. Army or potential of a new facility on another site to be determined



Upcoming Shelter Projects

Eleanor Kennedy Shelter continued:

- ❖ Existing building condition assessment completed
- ❖ Currently soliciting for
Architectural/Engineering design services



Upcoming Shelter Projects

Embry Rucker Shelter:

- ❖ Replacement of the existing shelter as part of the Reston Town Center North Development
- ❖ Located in a mixed use development with public facilities, residential/commercial development and open space



Upcoming Shelter Projects

Embry Rucker Shelter continued:

- ❖ Currently preparing the space program/requirements
- ❖ Design and construction will be provided by the future development partner



Upcoming Shelter Projects

Patrick Henry Shelter:

- ❖ Replacement facility on the same site
- ❖ Existing building condition assessment completed



Upcoming Shelter Projects

Patrick Henry Shelter continued:

❖ Currently soliciting for Architectural/Engineering design services

Shelter projects completion projected in the next 2 to 5 years



21st Century Homeless Shelter System

End
Homelessness