

National Capital Planning Commission

Marcel Acosta, Executive Director, NCPC

Land Use Policy Committee

February 15, 2022

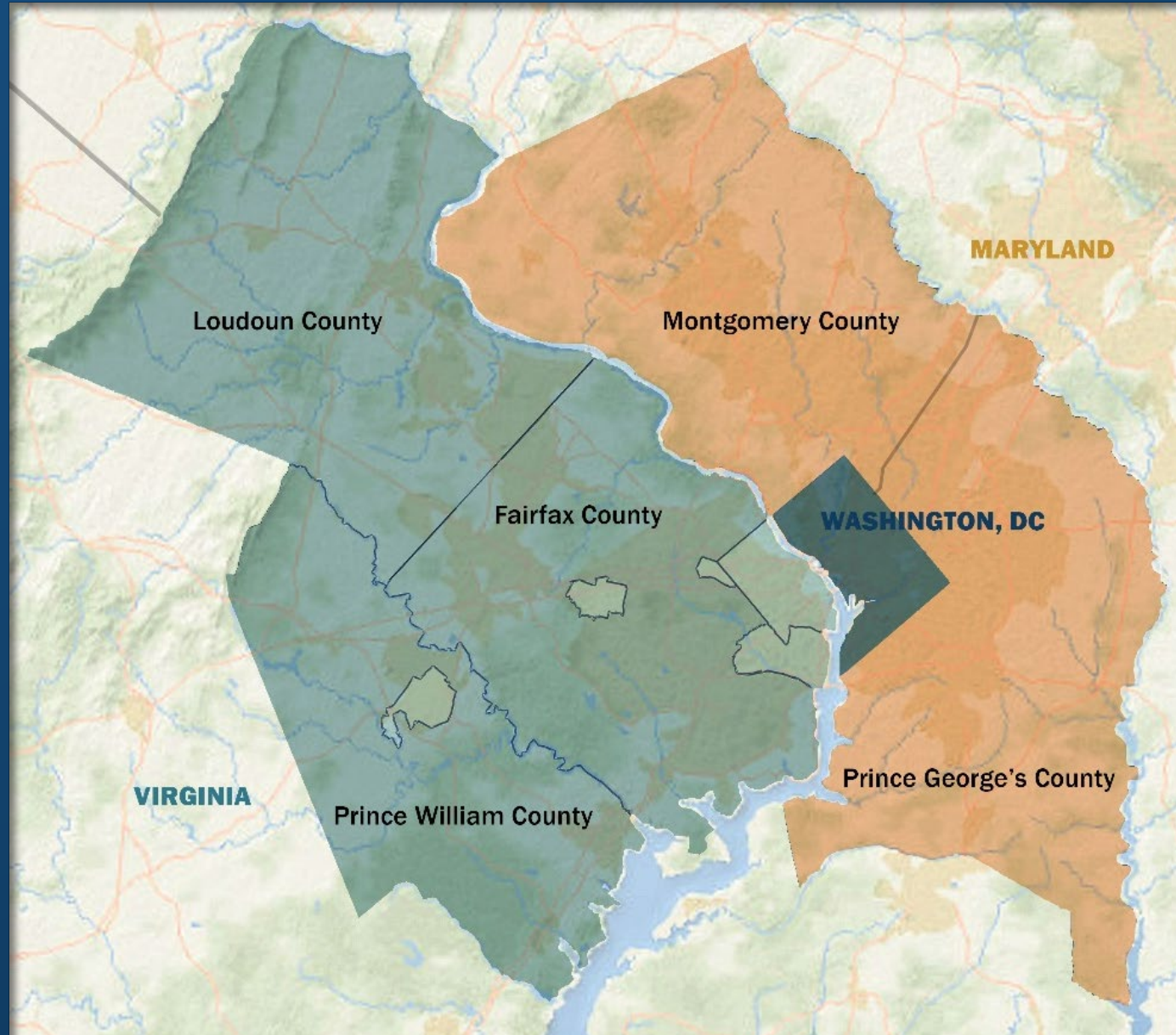
An aerial photograph of a golf course. In the foreground, a large, modern clubhouse with a white, multi-faceted roof is visible. To the left of the clubhouse is a circular parking lot filled with cars. The golf course is surrounded by dense green trees. The image is overlaid with a dark blue semi-transparent banner at the bottom.

Fairfax County Board of Supervisors Briefing

February 15, 2022



**National
Capital
Planning
Commission**



12 Commissioners

*Meets monthly to adopt, approve,
or provide advice on plans and projects*

8 Federal

- * * * 3 Presidential Appointees
- * * 2 Congressional Representatives
- * * * 3 Federal Agency Representatives

4 Local

- * Mayor, District of Columbia
- * * 2 Mayoral Appointees
- * Chair, District of Columbia Council

Commission Staff

*Works to develop recommendations
for Commission actions*

Staff

35 design, planning, public affairs,
and technology professionals

Authorities

- *National Capital Planning Act*
- *Other Congressional legislation (e.g., the Commemorative Works Act)*

Responsibilities

- *Environmental and historic protection*
- *Other legislation (e.g., Height of Buildings Act)*
- *Executive Orders*





NCPC Activities

Core Programs
Outreach

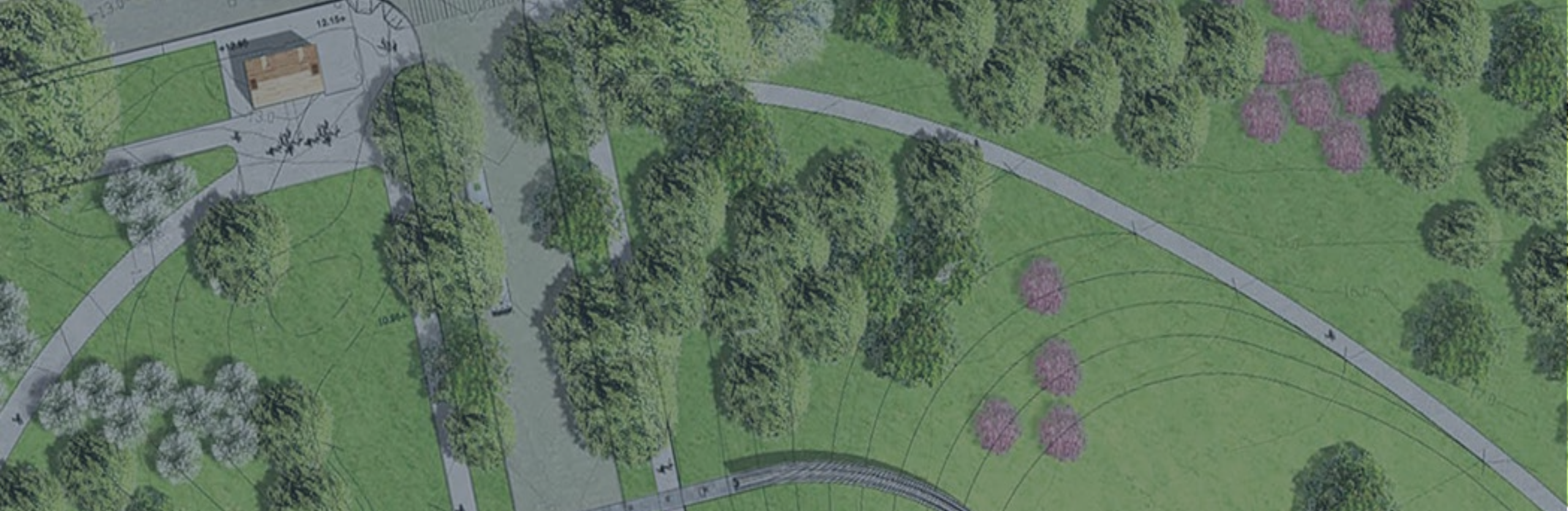
An aerial photograph of Washington, D.C., featuring the Washington Monument in the background and various city buildings and streets in the foreground. The image is overlaid with a semi-transparent blue filter. Four lines of white, bold, sans-serif text are centered vertically on the left side of the image.

Comprehensive Plan.

Focus Areas.

Federal Capital Improvements Program.

Urban Design & Plan Review.



Core Programs

Urban Design & Plan Review.

NCPC plans and regulates federal land in and around Washington, DC by ensuring that new developments enhance the region's historic, cultural, and natural resources.

Projects

Review

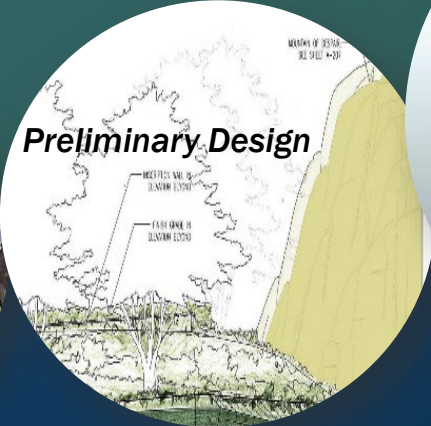
- Federal projects
- Memorial site + design
- Master plans

Multi-Step Process

- Concept (not mandatory)
- 1. Preliminary design
- 2. Final design



Concept



Preliminary Design



Final Design

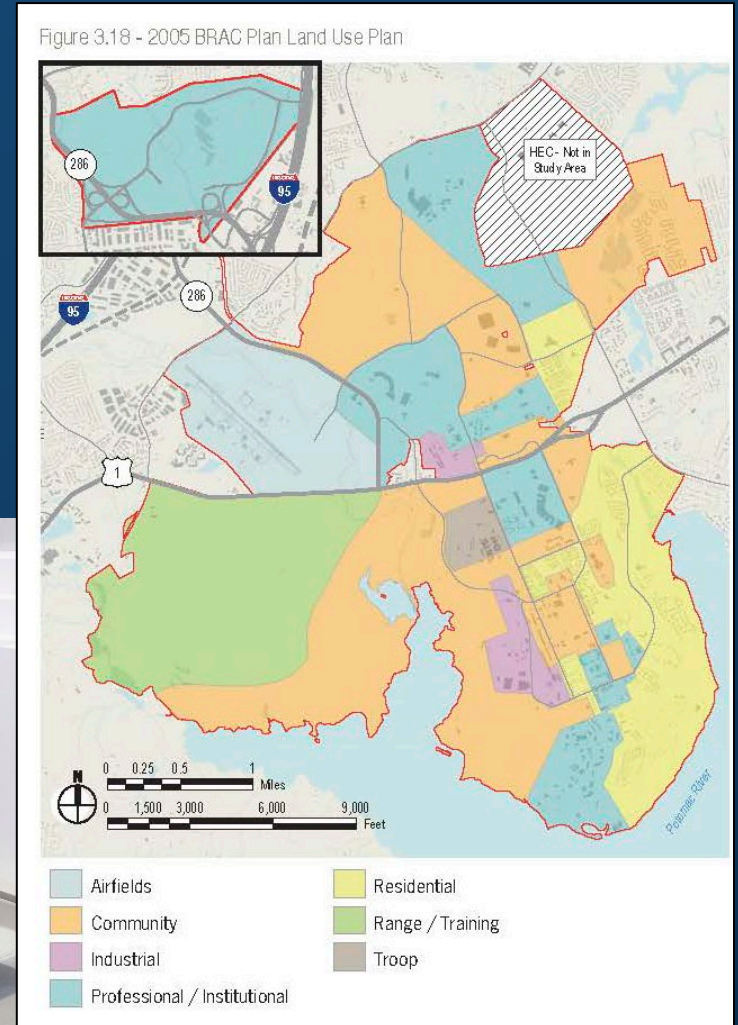


Photo: USPP

Martin Luther King, Jr. Memorial

Project Types

- **Common Projects (Site, Building Plans)**
- **Master Plans**
- Commemorative Works
- Antennas
- Transfers of Jurisdiction
- Foreign Missions



Site & Building Plan Review Stages

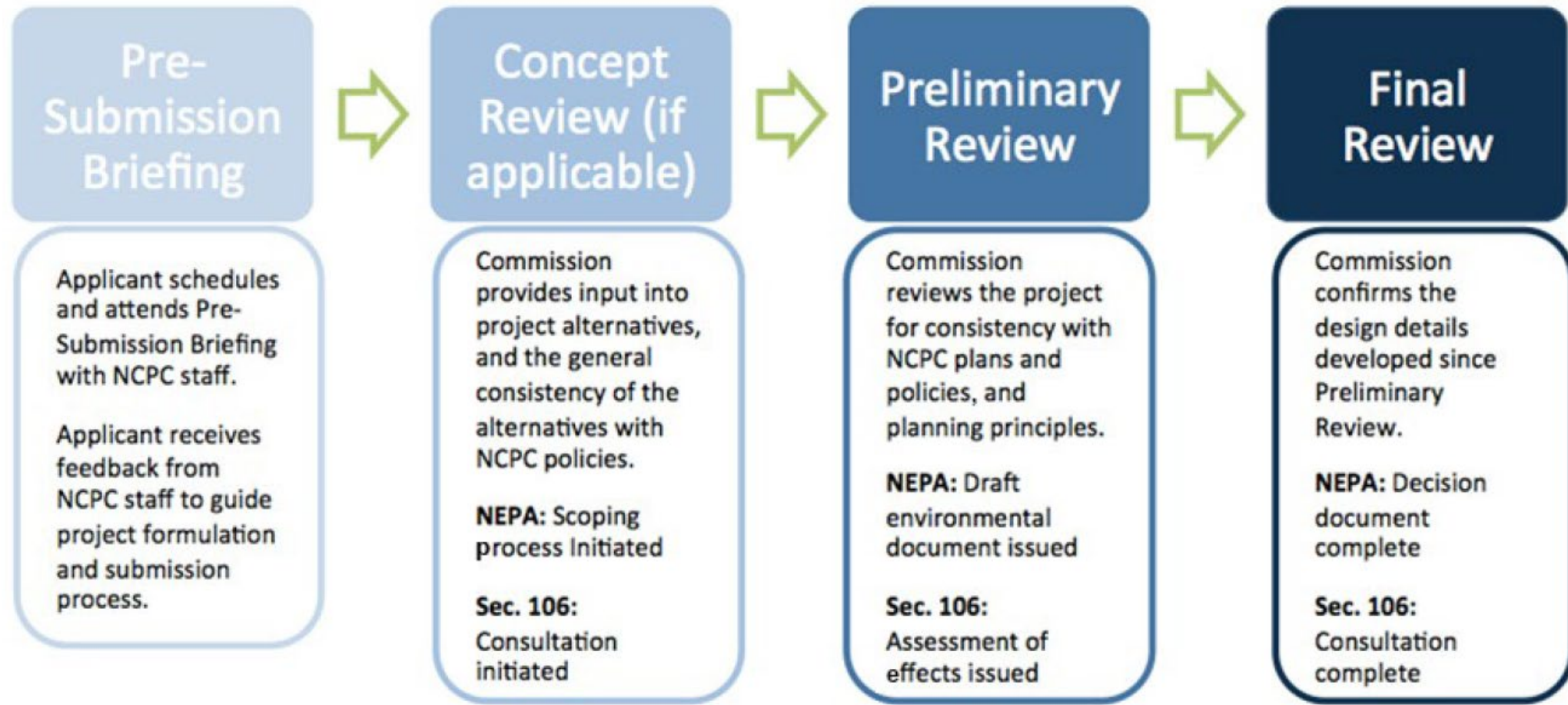


Figure 1: NCPC General Submission Stages

Master Plan Review Stages



***NEPA process may be completed with the Master Plan OR the during individual project review stage.**

Intergovernmental Referral

Master Plans (new plans and major modifications)

- NCPC refers all master plans for an intergovernmental review to affected local planning agencies and clearinghouses for review for 60 days.
- Referrals generally occur at the draft review stage to obtain comments and feedback from state and local stakeholders.

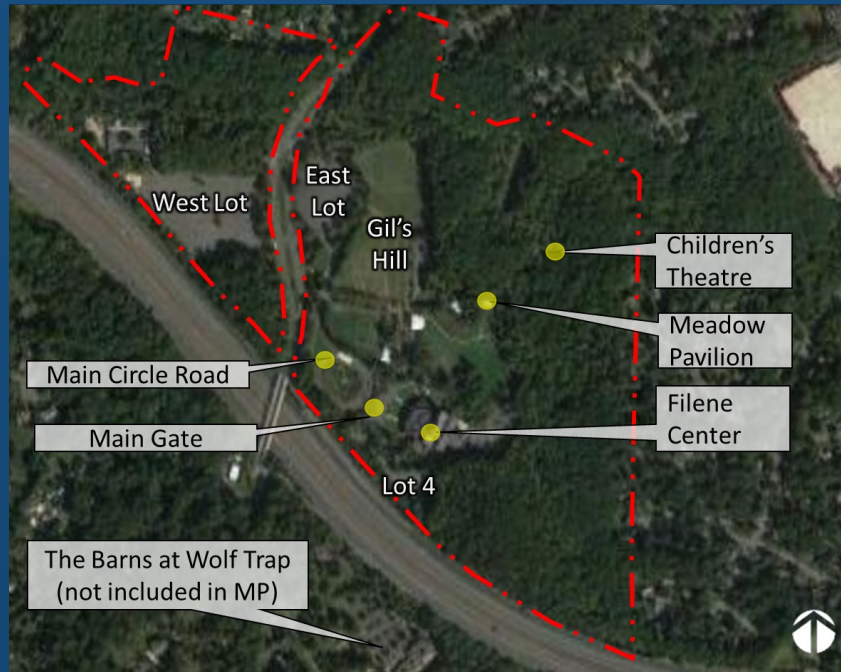
Site and Building Plans

- NCPC refers individual projects where there is no approved master plan for intergovernmental review to affected local planning agencies and clearing houses
- Referrals generally occur at the preliminary review stage to obtain comments and feedback from state and local stakeholders.



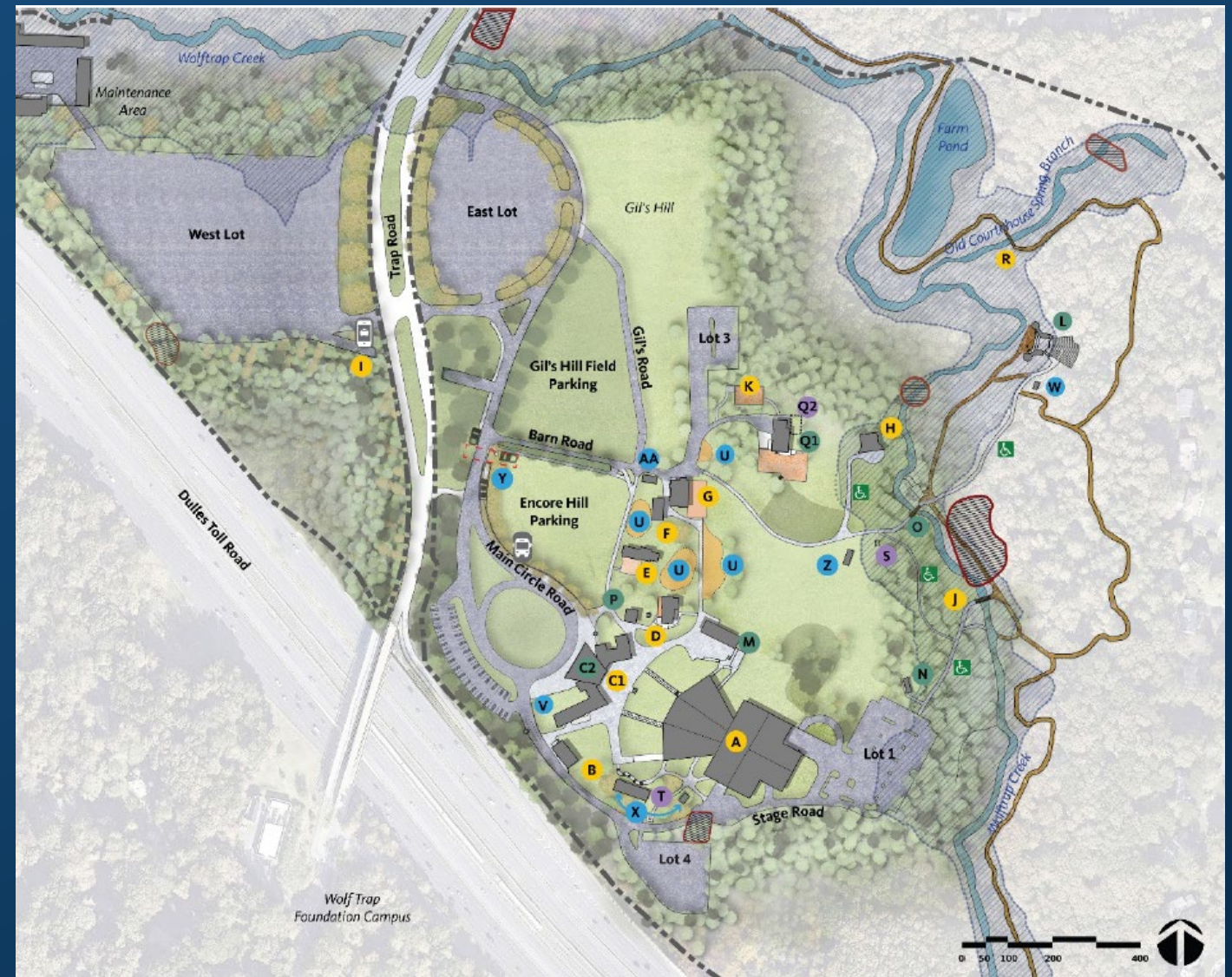
Recent Reviews & Upcoming Projects.

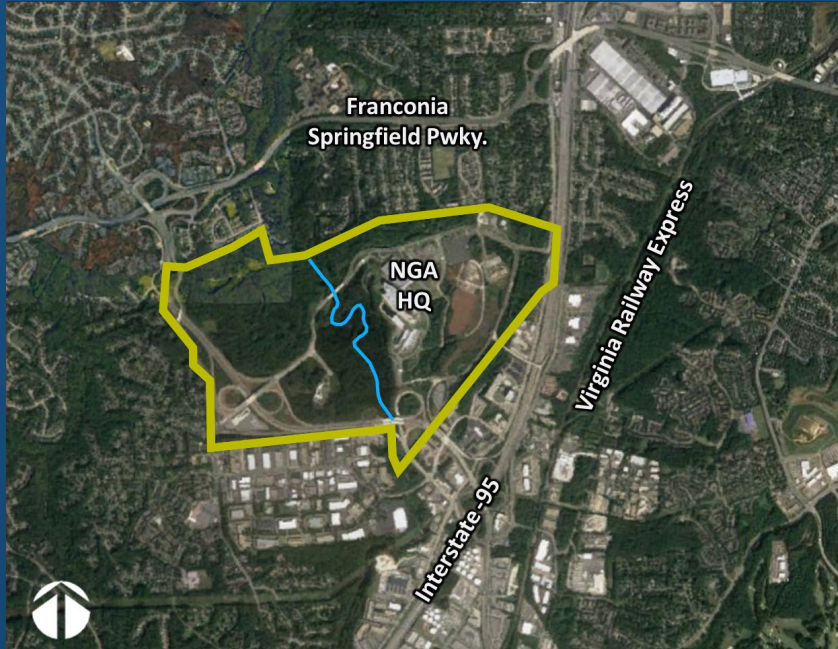
Samples of recent and upcoming Master Plans and projects in Fairfax County that NCPC reviews.



Applicant: National Park Service

- 130-acre park
- 407,500 avg. visitors annually
- 3 Performance venues and 65-acres of natural woodland, streams, and wetlands
- Upgraded facilities and improvements





Applicant: Department of the Army

- 804-acre campus
- National Geospatial Intelligence Agency HQ constructed in 2011
- 10,700 NGA employees
- Expansion of the campus core and other potential future development

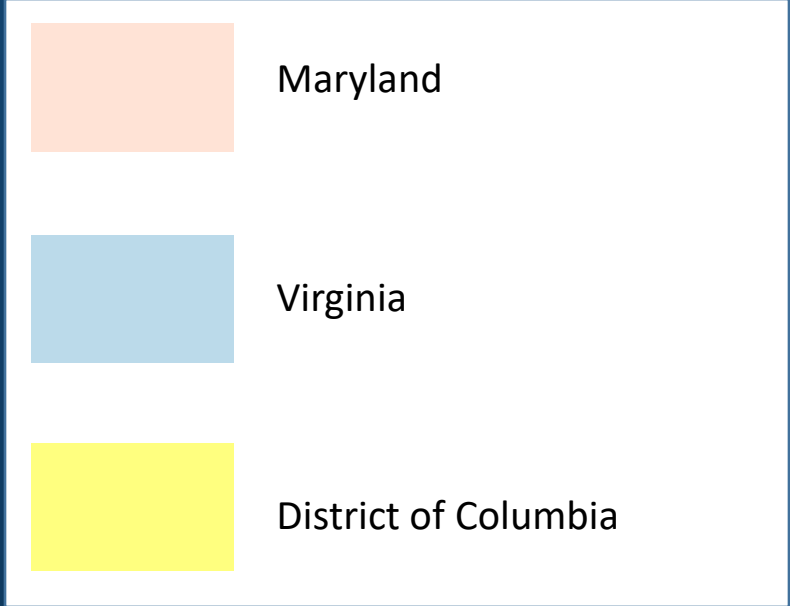
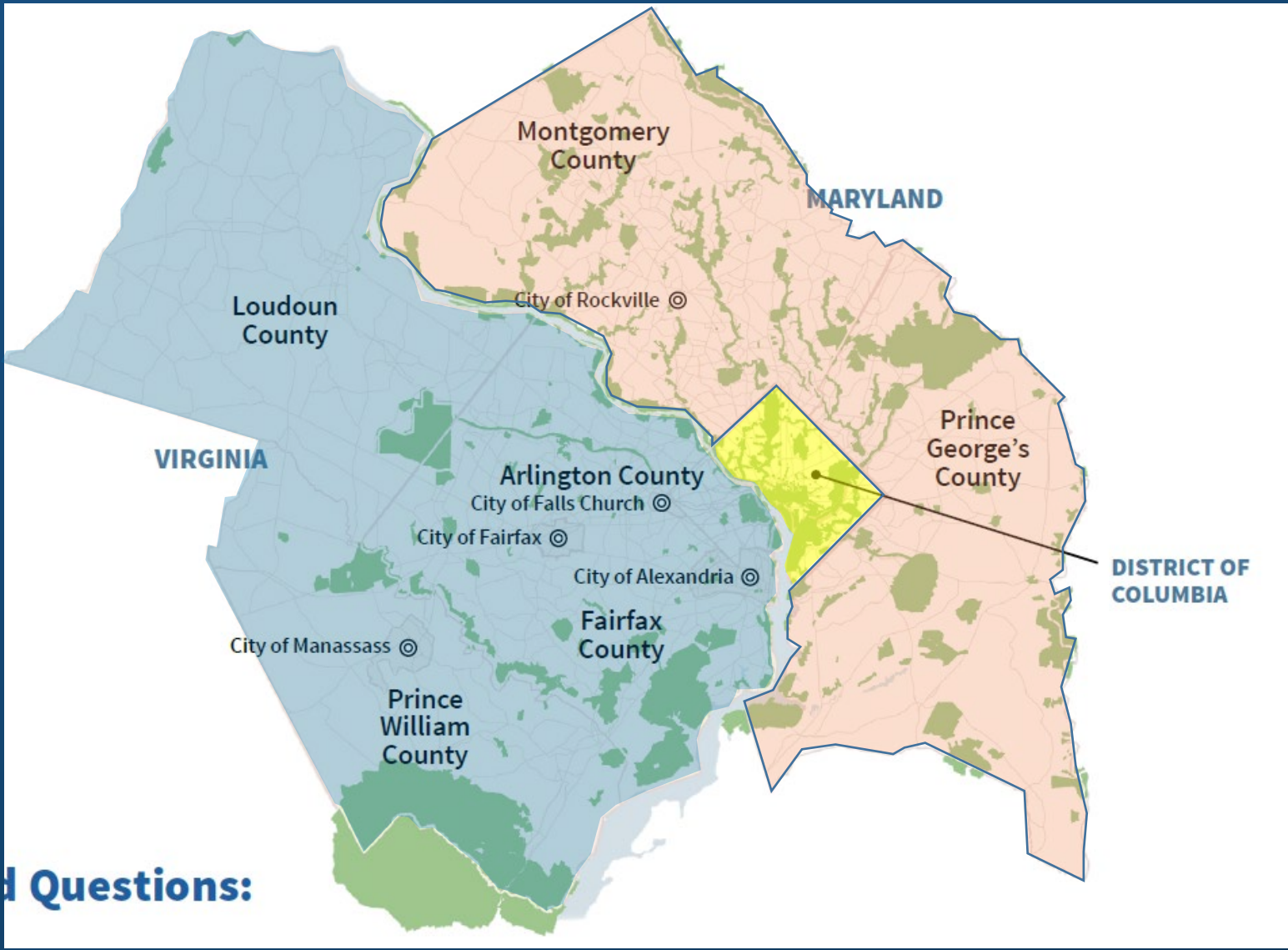




Core Programs

Outreach.

At the heart of NCPC's work is a commitment to foster meaningful opportunities for engagement and collaboration.



Questions:

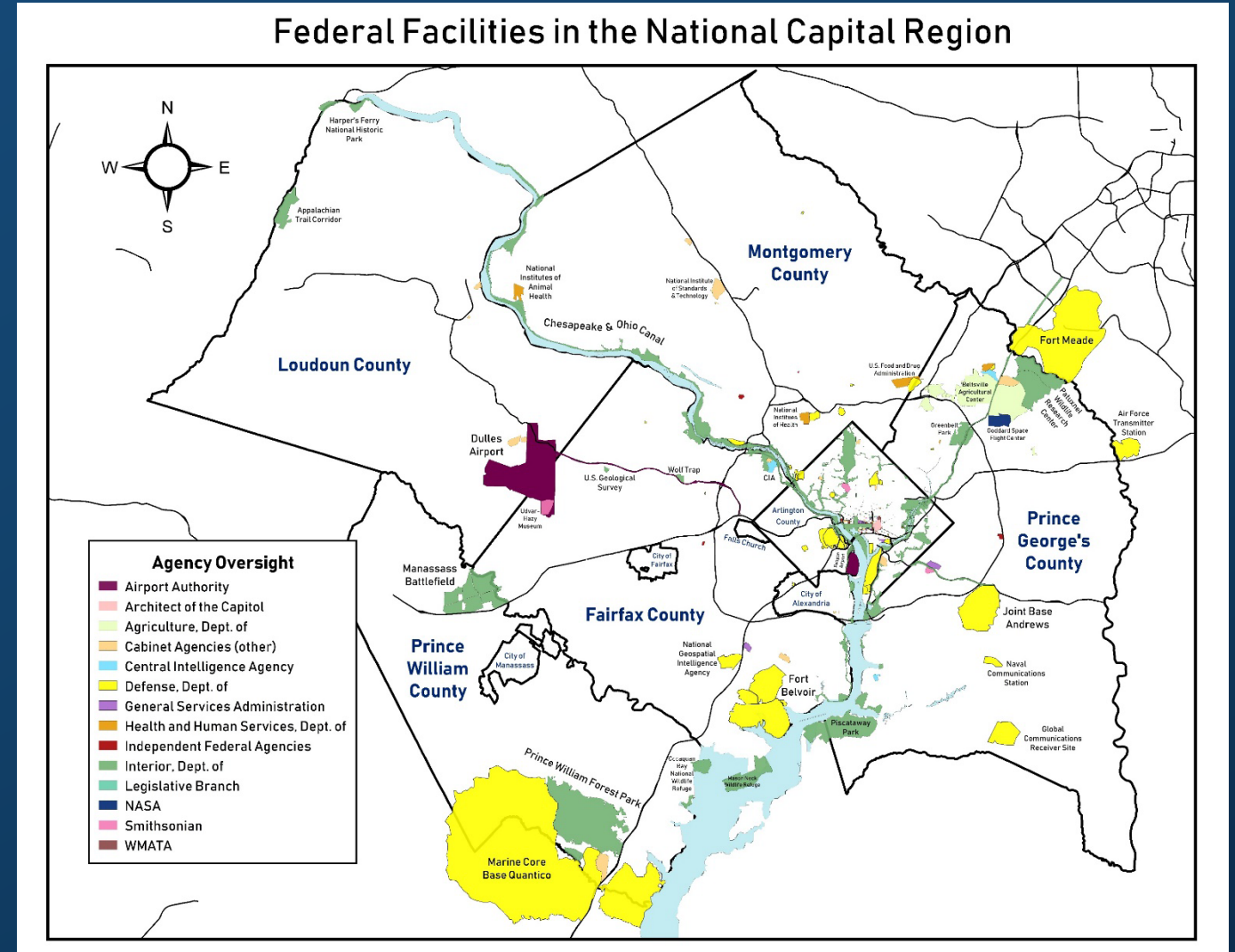
The National Capital Region

Federal Facilities Outreach - Annually

- Transportation Management Plan Monitoring – Biennially
- Federal Capital Improvements Program (FCIP) – Annually
- Staff outreach on new guidelines and resource guides – As necessary
- Department of Defense Master Planning Training Workshop – January 2020

Goals

- ✓ Establish an annual outreach schedule for federal facilities in Maryland and Virginia
- ✓ Coordinate earlier on projects and ensure project projects are submitted to the Commission at appropriate stages
- ✓ Connect with local jurisdictions in early or pre-planning stages
- ✓ Integrate Transportation Management Plan reporting
- ✓ Create new internal tools to keep track of contacts and federal facility projects in the pipeline



Example Federal Facilities in Fairfax County

FACILITY	JURISDICTION	APPLICANT AGENCY
Wolf Trap National Park for the Performing Arts	Fairfax County	National Park Service
George Washington Memorial Parkway	Fairfax County	National Park Service
Northern Virginia Sectional Center	Fairfax County	U.S. Postal Service
Fort Belvoir	Fairfax County	Department of the Army
Fort Belvoir North Area	Fairfax County	Department of the Army
Tyson's Communications Tower	Fairfax County	Department of the Army
Turner Fairbank Highway Research Station	Fairfax County	Department of Transportation
Mason Neck National Wildlife Refuge	Fairfax County	Fish and Wildlife Service
GSA Stores Depot	Fairfax County	General Services Administration
Hybla Valley Office Building	Fairfax County	General Services Administration
US Geological Survey National Center	Fairfax County	General Services Administration

Key Takeaways – First Year

- Reestablished connections with agencies and contacts that NCPC does not routinely work with.
- Renewed interest from the local jurisdictions outside of the interjurisdictional review period – especially with regard to coordinating environmental and traffic related issues.
- Updated and verified NCPC's records of owner, occupant, and applicant agencies, as well as primary contacts for those agencies.
- Established a regular time to coordinate Transportation Management Plan reporting.
- Created a new tool – the Facilities Outreach Management System (FOMS) – to keep track of important information like pipeline projects, applicant contacts, meeting notes, and TMP data.

Opportunities to Engage

- Master Plan and project referral periods
- Annual Regional Outreach Initiative (June – September)
- Federal Capital Improvements Program
- National Environmental Policy Act (NEPA) and National Historic Preservation Act (NHPA) Section 106 Consultations
- Special initiatives led by MWCOC, ULI, etc.



**National
Capital
Planning
Commission**

www.ncpc.gov

www.facebook.com/ncpc.gov

202.482.7200

401 9th Street NW
North Lobby, Suite 500
Washington, DC 20004

Photo courtesy of DCOP