



FCPA CIP FY 2026 – FY 2030 Presentation



Jai Cole
Executive Director
Fairfax County Park Authority





Acres Mowed

1880

Golf Courses

8

Total Visitation

18 mil+

Rec Centers

9

Dog Parks

11

Athletic Courts

412

Athletic Fields

263

Playgrounds

229

Parks

422

Nature Centers

4

Land

23,500+
acres

Trails

342
miles

Lake Front Parks

4

Farmer's Markets

10

We build new facilities...

Lake Fairfax Park Inline Skate Rink



Laurel Hill Park
Restroom Facility



Franconia Park Athletic Court
Reconstruction



Stratton Woods Combined
Futsal & Basketball Court



Rolling Valley West Park
Athletic Field Irrigation



Patriot Park North
Concession Building

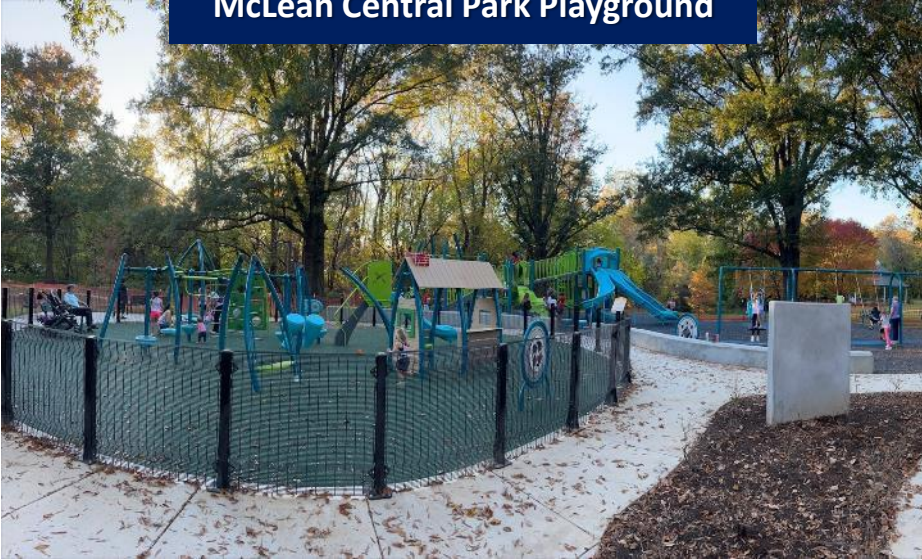


Cub Run Rec Center
Child Care Center



Capitalize on alternative funding sources...

McLean Central Park Playground



Cabel's Mill Masonry Repairs



Eileen Garnett Civic Space



Colvin Run Mill ADA Improvements



Lewinsville Park Fields #2 & #3 – Synthetic Turf Replacement



Green Spring Gardens Moon Gate



Mason District Park Baseball and Pathway Lighting



Build for a sustainable future...

ESCO PH II Main Building Improvements



ESCO PH II Pool Unit Replacement

But also need to take care of what we have...

Trails

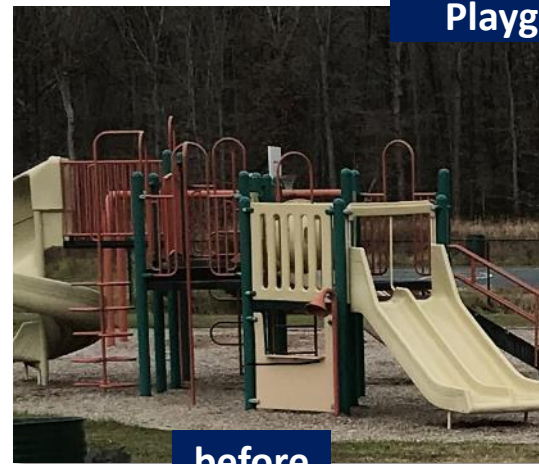


before

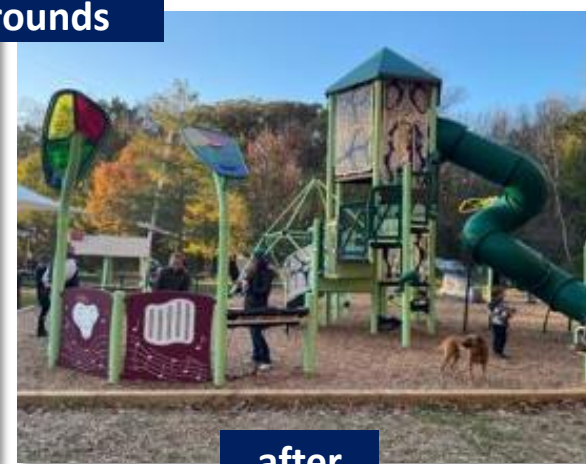


after

Playgrounds



before



after

Systems



before



after

Bathrooms



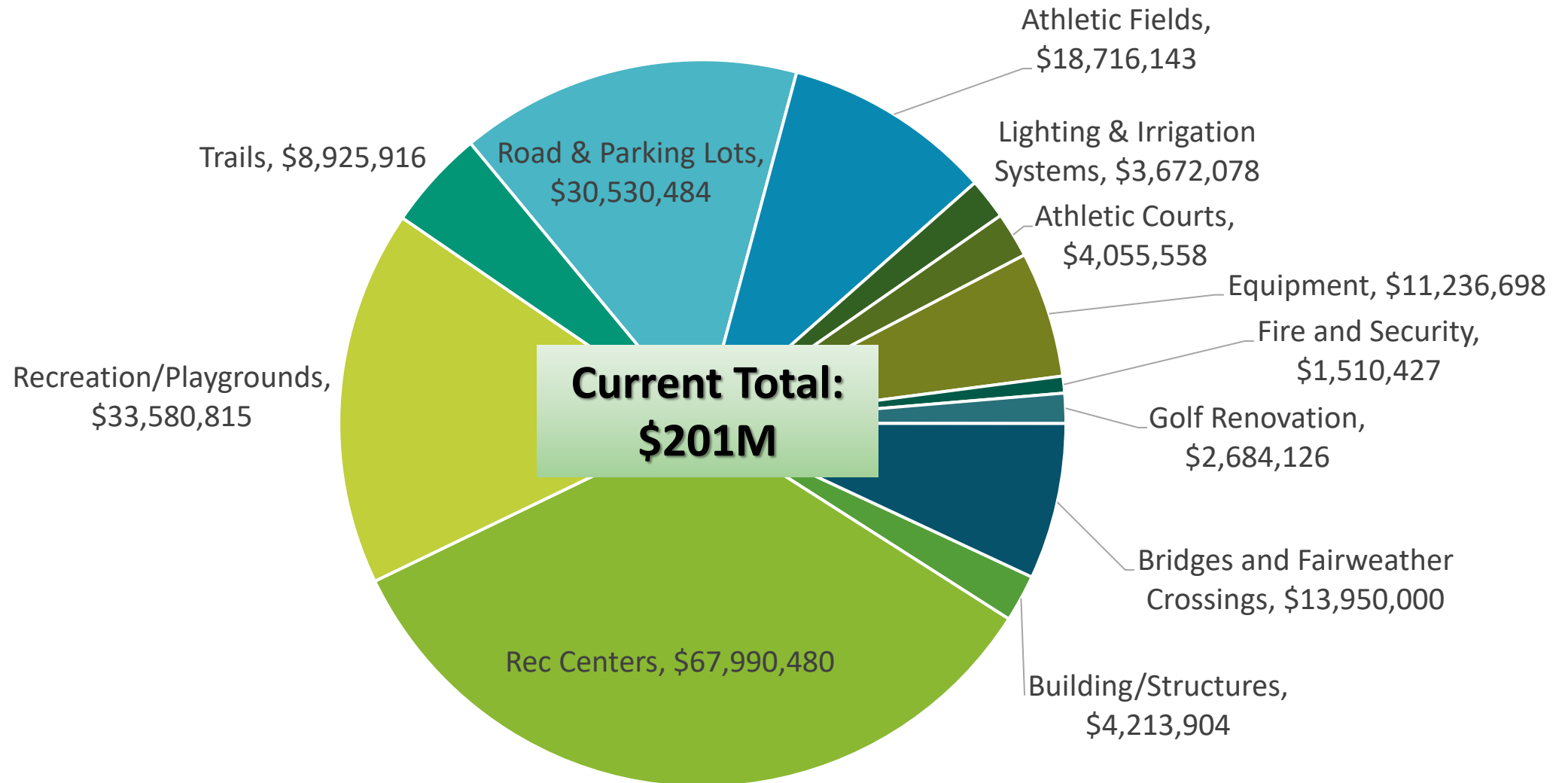
before



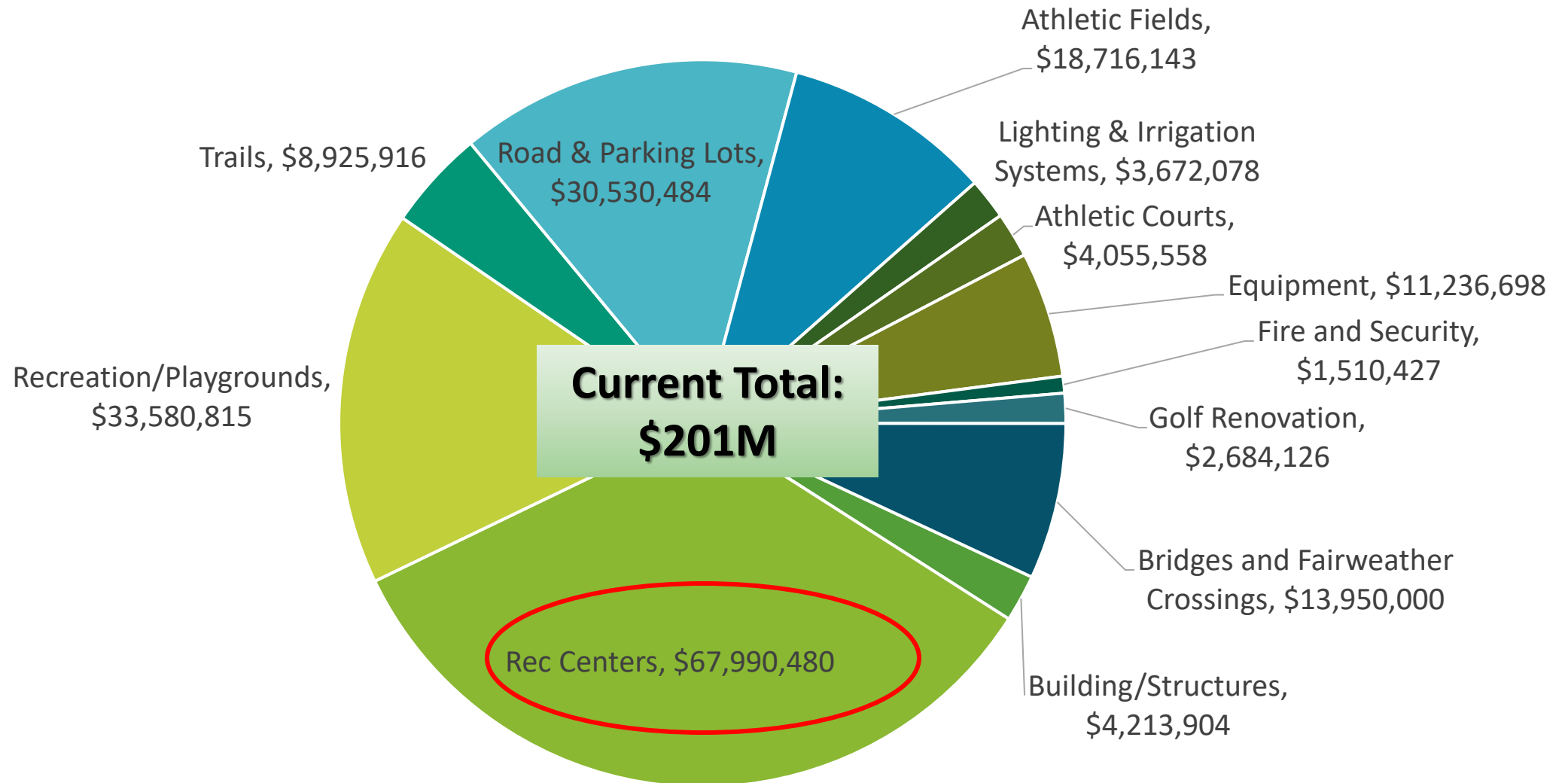
after



Taking Care of What We Have: Assets at or Near Failure



Taking Care of What We Have: Assets at or Near Failure



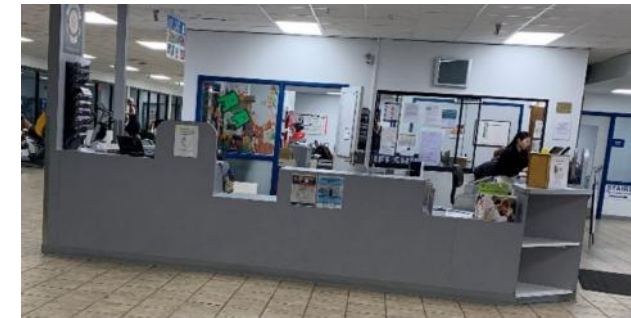
Rec Center issues



Audrey Moore
Built 1977



Franconia
Built 1981



Providence
Built 1982



Audrey Moore Rec Center (AMRC)

- Located at 8100 Braddock Road, Braddock District
- AMRC was the first rec center constructed by Fairfax County Park Authority and opened in 1977
- The Facility is approximately 76,100 SF
- AMRC is the 3rd largest rec center in Fairfax County



Current Condition of AMRC (1977)



Building Envelope



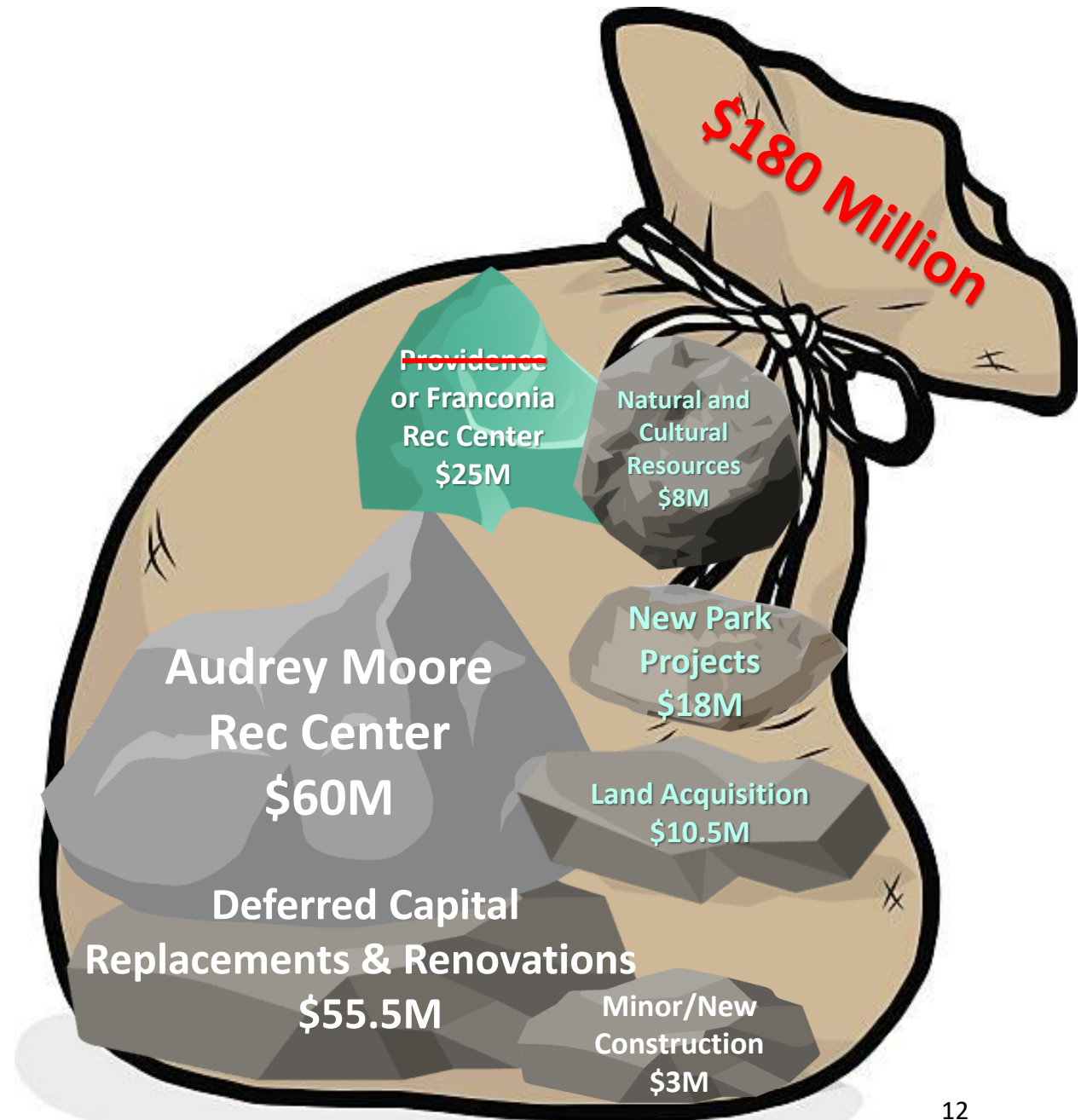
Inefficient Boilers

- Natatorium Steel Columns severely corroded
- Roof of the natatorium show extreme to moderate corrosion

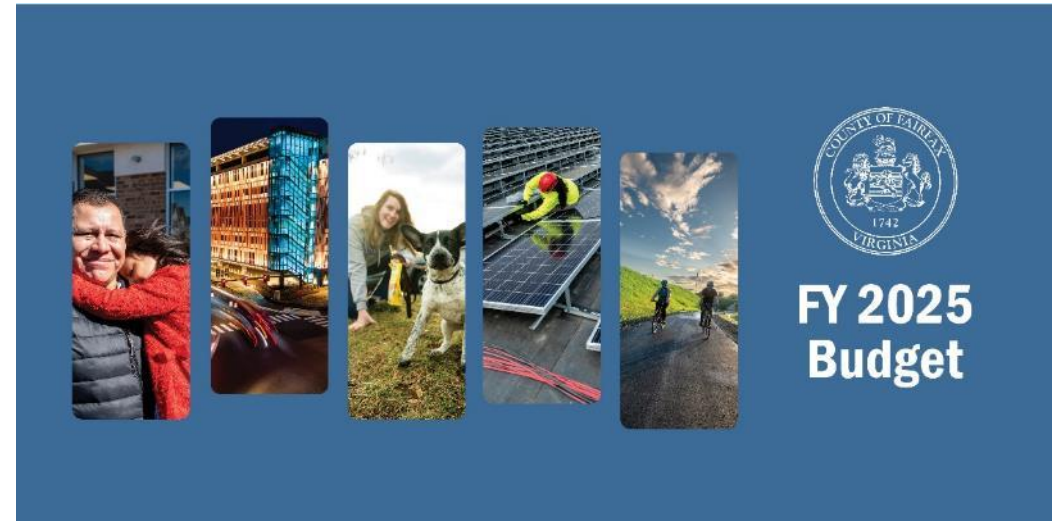


Audrey Moore 2026 Bond Strategy

**Audrey Moore
needs \$85M in 2026
bond**



CIP Assistance



As in all areas of the Capital Program, the Park Authority is experiencing inflation and project cost escalation on existing projects. **Additional funding will help with escalating costs, expedite projects already underway, and alleviate some pressure on the Bond program.**

As directed by the Board of Supervisors, staff have been working with the Park Authority to appropriately size annual bond sales and to develop future bond referendum proposals that both address Park Authority needs and conform to the County's overall limitations. ***We anticipate that the Park Authority would require County support outside of the bond program to bridge funding gaps prior to the next referendum.***



CIP Assistance and Bond Strategy

Year	Amount	Running Tally
FY2023	\$5M	\$5M
FY2024	\$5M	\$10M
FY2025	\$5M	\$15M
FY2026	\$5M	\$20M
FY2027	\$5M	\$25M
Audrey Moore \$60M (2026Bond) + \$25M (CIP Assistance) = \$85M		
FY2028	\$5M	\$5M
FY2029	\$5M	\$10M
FY2030	\$5M	\$15M
FY2031	\$5M	\$20M
FY2032	\$5M	\$25M

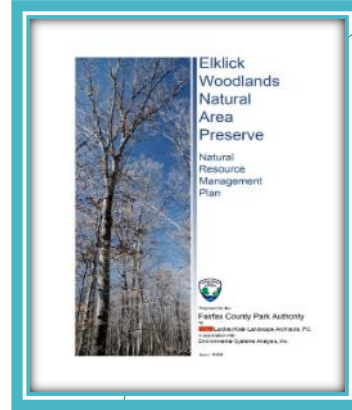
Franconia/Providence \$25M (2026 Bond) + \$25M (CIP Assistance) = **\$50M**



PROSA

Parks • Recreation • Open Space • Access

Natural and Cultural
Resource
Management Plans



Condition
Assessments

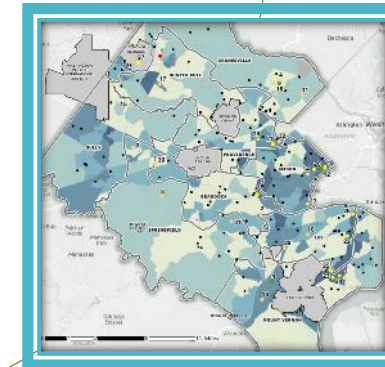


Planning Studies

Equity Plan



Playground Study



Needs Assessment



**PARKS
COUNT**
Our Parks. Our Future.



ADA Transition Plan



PROSA

Parks • Recreation • Open Space • Access

PROSA will inform the 2026 bond and advance County Strategic Plan priorities:

- Analyze and prioritize projects that serve the PROSA equity lens.
- Prioritize sites that improve walk access to parks.
- Enhance park experiences to provide a balance of recreational experiences to all residents.
- Improve tree canopy and habitat quality at park sites.



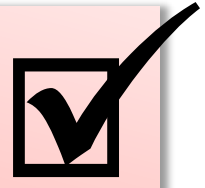
Serve PAREI opportunity areas and high and very high population density areas



Improve 10-minute walk access to FCPA parks



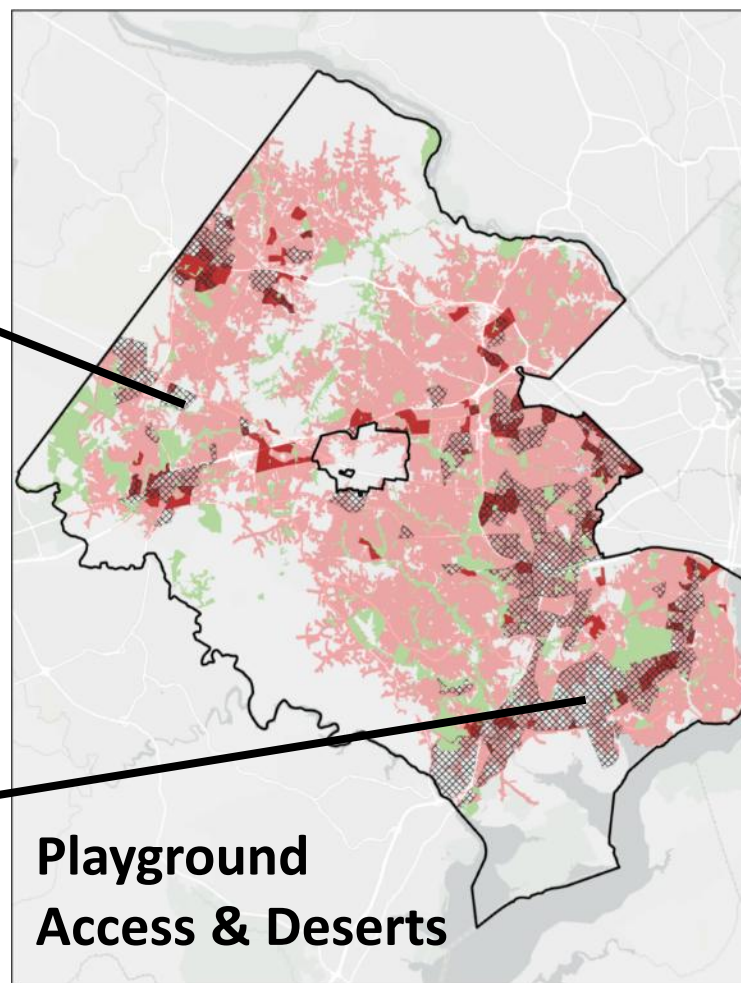
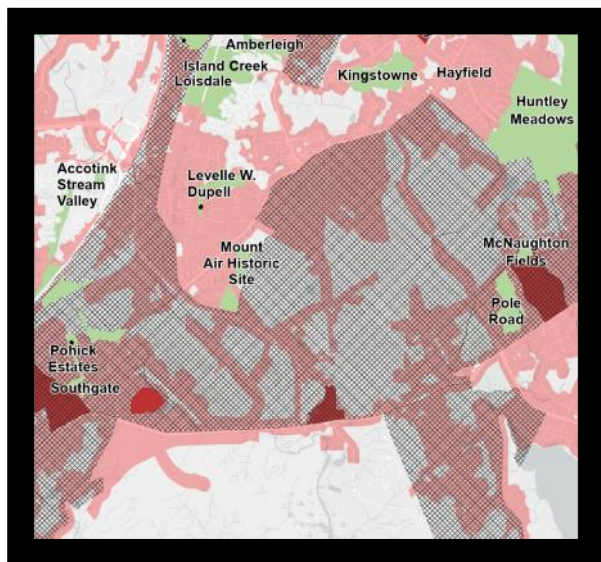
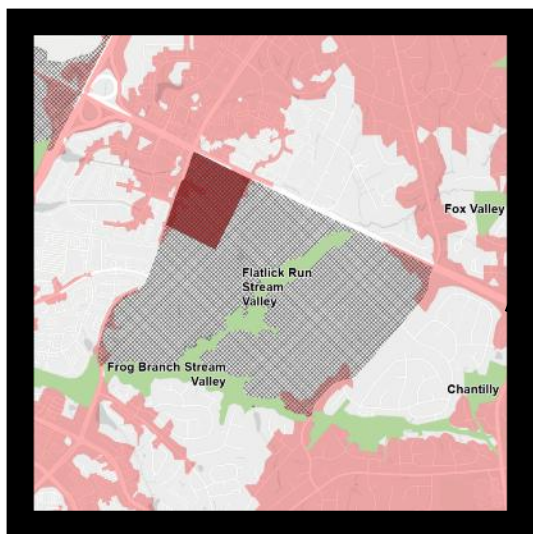
Enhance access to complete park experiences



Enrich habitat connectivity between environmental corridors



Playground Study



Legend



FCPA Parks



Opportunity Areas



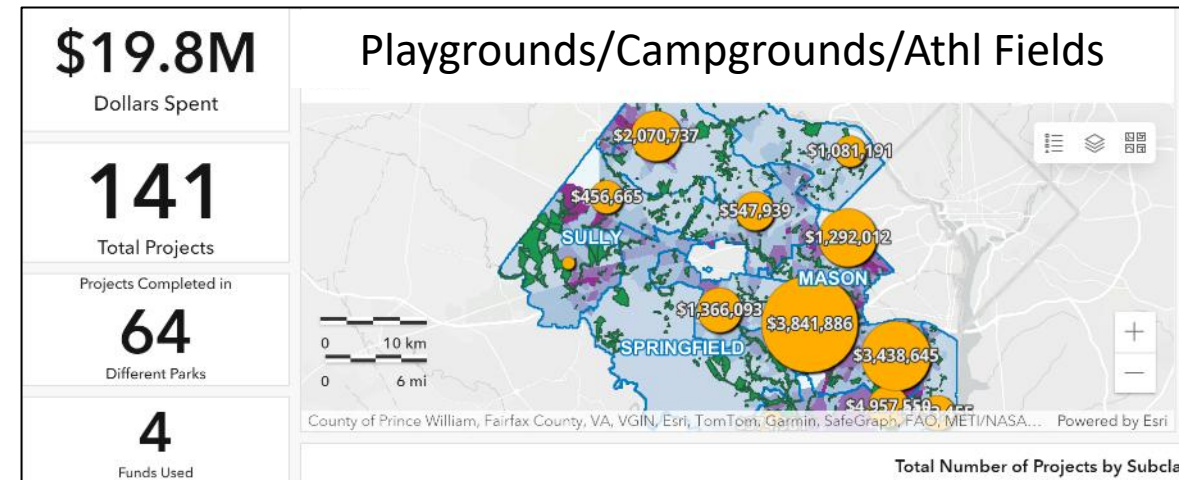
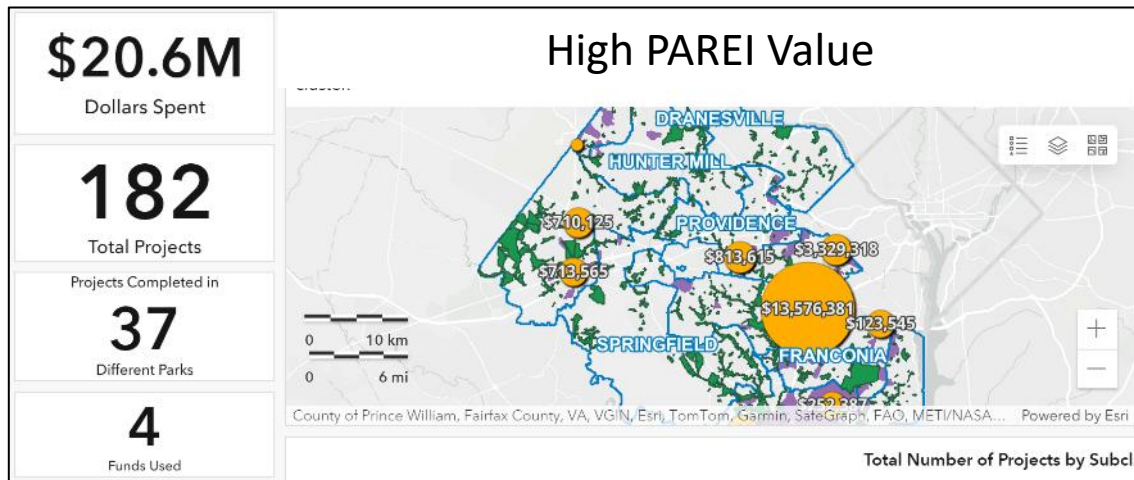
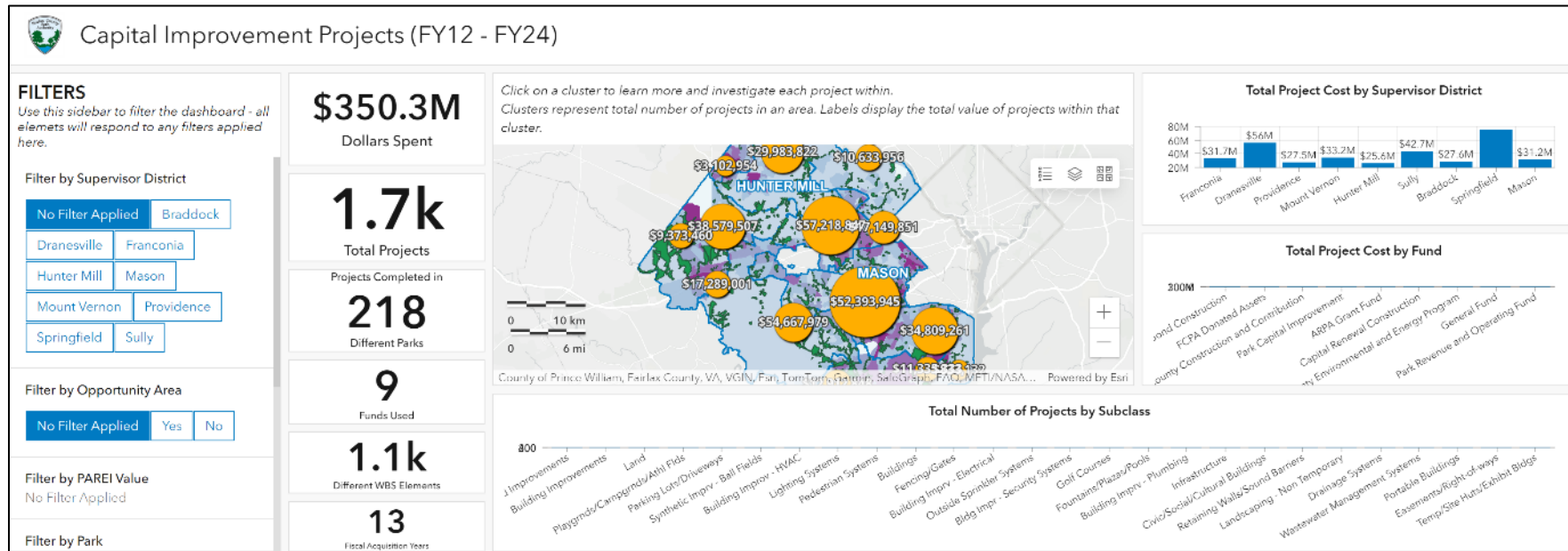
High & Very High
Population Density



5-minute drives to
playgrounds



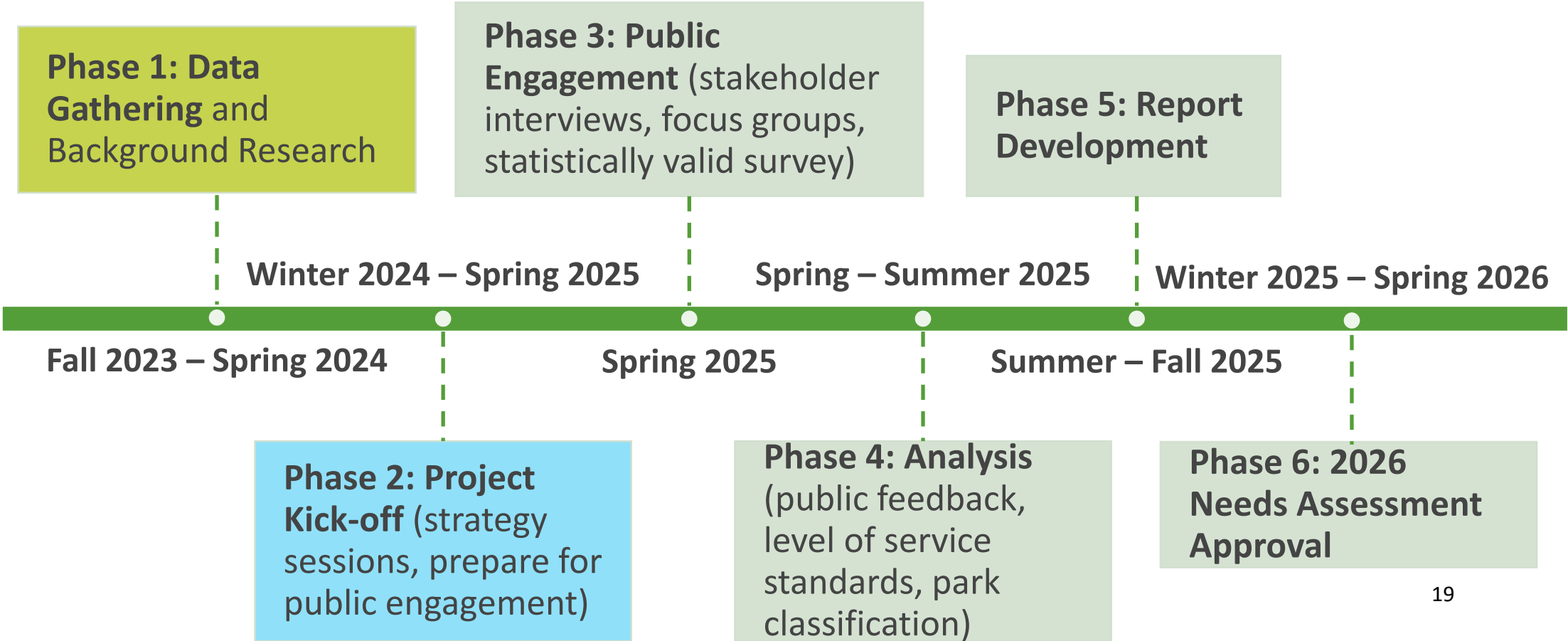
Historical CIP Investment Mapping Tool





PARKS COUNT

Our Parks. Our Future.



Bond Strategy: 4- year to 6-year process

Previous Process	Updated Process
Comprehensive condition assessment	Start with Planning/public input-Needs Assessment
Priorities based primarily on external factors (Politics, external requests, etc)	Develop comprehensive prioritization process (Analysis, location, need, condition, equity, resource intensity)
Reactive	Proactive
Propagates similar pattern of park development	Equitable decision making within the bond cycle timeframe Review of past CIP funding to reflect geographic equity
No alignment of Bond cycle and cash flow	Alignment of project lifecycle within bond cycle and associated cash flow plan
Focus on stand alone projects	Shift to balance between SA and LOE Level of Effort projects



Stand Alone Project

Individual self-contained project, specific team, scope, budget, deliverables, time

Level of Effort Projects

Support-type activity, usually consists of short amounts of work that must be repeated periodically, specific tasks within overall projects.



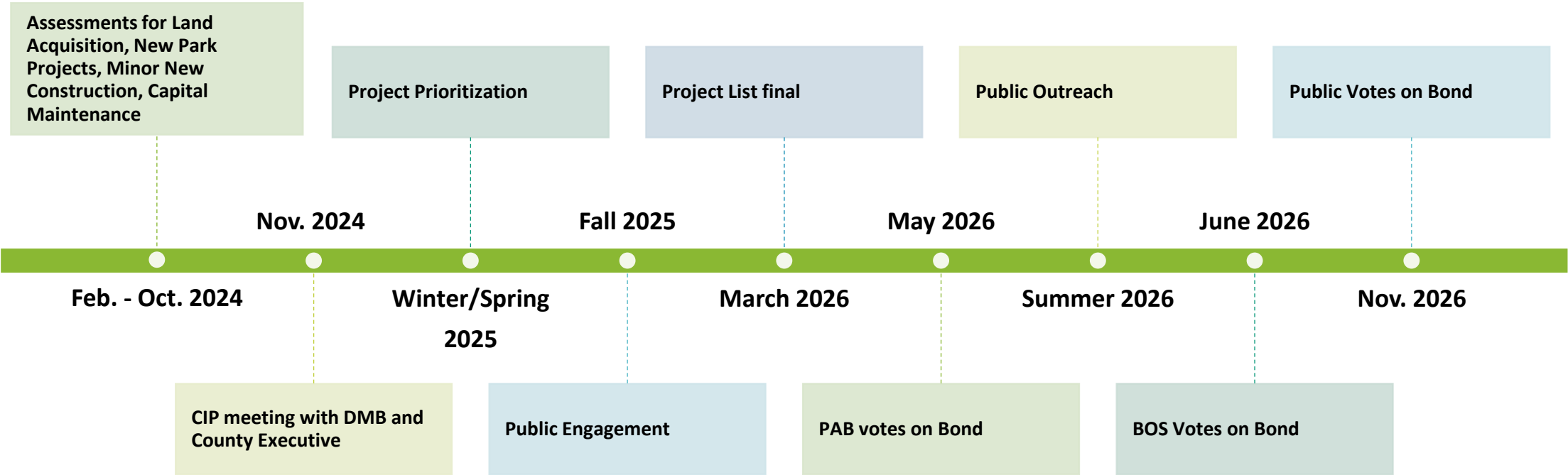
Putting it all together: CIP Strategy



Workplan/ Decision



2026 Bond Schedule



Mount Vernon Rec Center Renovation Coming Spring 2025





Jai Cole
Executive Director
Fairfax County Park Authority

