



Juvenile and Domestic Relations District Court

Lines of Business Review
Proposed FY 2010 Budget Reductions
15% Reduction = \$3,398,081

September 29, 2008

Agency Mission and Vision



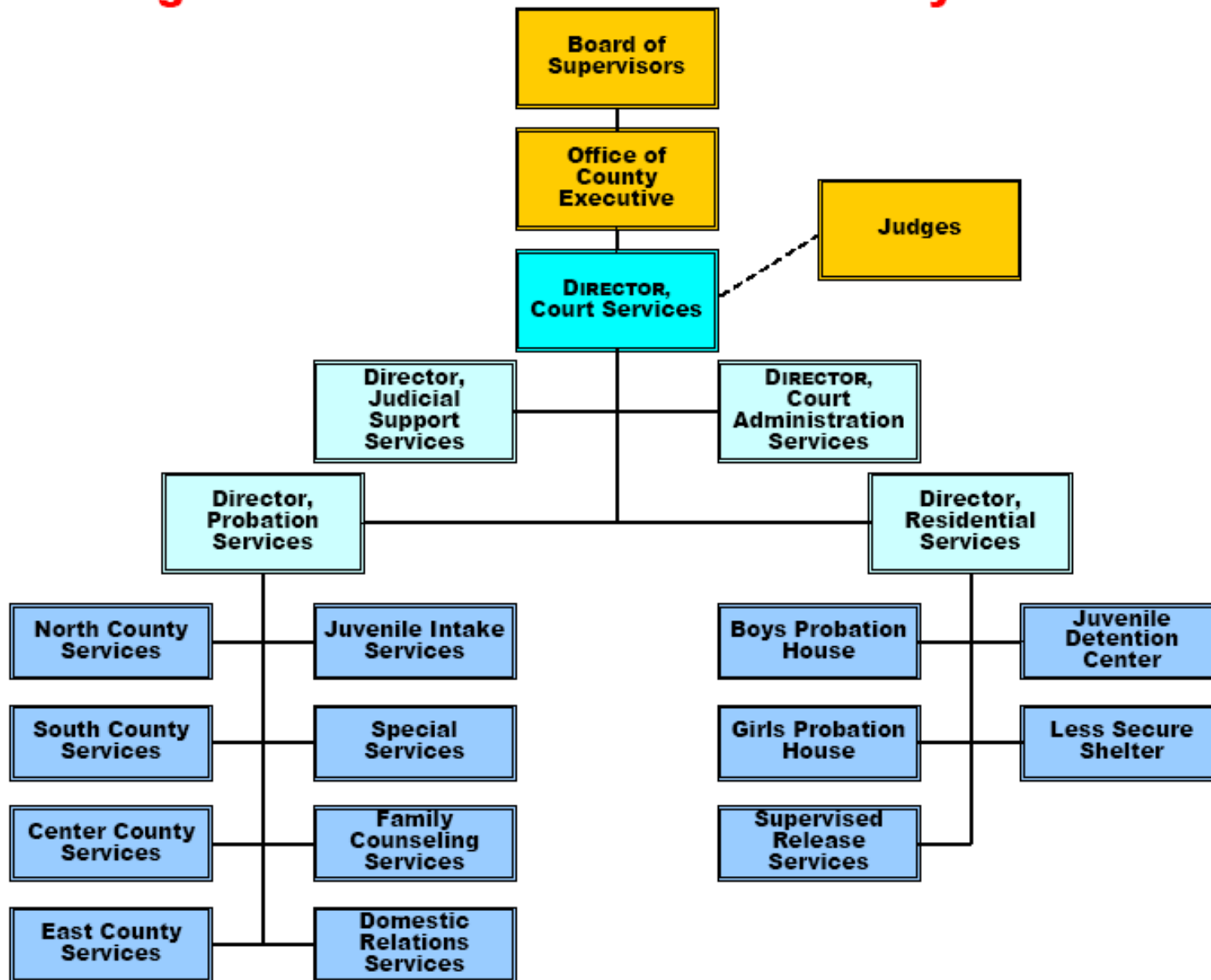
- ◆ The mission of the Fairfax County Juvenile and Domestic Relations District Court Services Unit is to provide efficient and effective probation and residential services which promote positive behavior change for those children and adults who come within the Court's authority, consistent with the well-being of the client, his/her family, and the protection of the community.
- ◆ The vision of the Court Services Unit is to be a leader among the nation's juvenile and domestic relations courts while enhancing public safety, and in partnership with our community, improve the lives of the youth, adults, and families with whom we work.



Agency Strategic Focus

- ◆ Juvenile Court services and programs are directly aligned with the larger County vision of maintaining safe and caring communities. The agency's overall strategic focus has been on achieving the mission and vision by:
 - Incorporating a balanced approach which includes community protection and holding clients accountable while also providing services that build positive skills and abilities and encourage successful reintegration into the community as productive and successful members of society
 - Developing a complete continuum of prevention, intervention, and treatment services
 - Incorporating evidence based programming into existing services
 - Providing services to youth and families in the least restrictive environment within the local community while preserving public safety
 - Providing services for adults and families in domestic crisis
 - Developing programs to increase pro-social skills of youth and their families
- ◆ Strategic planning efforts over the past five years have enabled the agency to focus on areas where further development would have the most impact to achieve the mission and vision. Recent Balanced Scorecard efforts have clarified the roles of the different parts of the organization and how they work together to achieve the agency's goals. The Scorecard will provide measures that are linked together.

Organizational Chart: Fairfax County JDRDC



In FY2008, Juvenile and Domestic Relations District Court Services:

- ◆ **Represented 5% of the total Public Safety budget**
- ◆ **Provided services in nine locations throughout the County**
 - Courthouse – Intake Services, Domestic Relations Services, Special Services, Supervised Release Services, Court Services Administration
 - 4 regional probation offices located in Reston, Alexandria, Falls Church, and Fairfax City
 - 12-bed shelter facility for juveniles
 - 121-bed secure detention center for juveniles
 - 2 long term residential treatment facilities for juveniles (12-bed facility for females, 22-bed facility for males)
- ◆ **Processed 15,275 new charges involving 8,358 individuals**
 - 41.9% or 6,407 of the charges involved juveniles engaging in criminal and/or truancy/runaway offenses
 - 58.1% or 8,868 charges involved juveniles (79% or 7,014) and adults (21% or 1,854) in domestic relations issues such as custody, visitation, abuse and neglect, adult protective orders and foster care.
- ◆ **Supervised 1,000 new juvenile cases and 595 new adult cases on probation**
- ◆ **Supervised 1,371 new juvenile community service cases**
- ◆ **Had 1,602 placements to Court Service's residential facilities**
- ◆ **312 Total Employees (310.5 SYE)**
 - 286 people (92%) providing direct services to clients and the public
 - 26 people (8%) providing administrative support
 - 81 temp and limited term positions that typically provide direct services
- ◆ **258 volunteers and interns provided 16,120 additional hours of services (7.75 SYE equivalent)**
 - Volunteer Interpreter Program: 29 volunteers served 2,736 families or individuals for a total of 2,820 hours of interpreter services
 - Volunteer Program: 229 volunteers, 13,300 hours of services

LOBS Summary Table:

FY 2008 Adopted Budget Plan Data



<i>Number</i>	<i>LOB Title</i>	<i>Net LOB Cost</i>	<i>LOB Number of Positions</i>	<i>LOB SYE</i>
81-01	Juvenile/Adult Investigation and Probation Services	\$3,624,433	77	76.5
81-02	Judicial/Court Services Administration	\$2,625,526	29	28.0
81-03	Juvenile/Adult Intake	\$1,945,803	30	30.0
81-04	Shelter Care	\$561,241	13	13.0
81-05	Supervised Release Services	\$561,926	13	13.0
81-06	Long-Term Residential Care	\$1,317,798	30	30.0
81-07	Juvenile Detention Services	\$4,506,077	120	120.0
TOTAL		\$15,142,804	312	310.5

Agency Growth Since FY 2001



◆ Growth in Expenditures:

- FY 2001: \$16.07 million - FY 2009: \$21.80 million
 - increase of \$5.73 million or 35.66%
 - average annual increase of 3.89%

◆ Growth in Positions/Staff Year Equivalency (SYE):

- FY 2001: 305/300.5 - FY 2009: 312/310.5
 - an increase of 7/10.0 SYE positions

◆ Majority of the increase is attributed to increased personnel costs. However, in nine years the agency has only added 7 merit positions.

- 2 Juvenile Detention court holding security
- 2 Adult Supervised Visitation and Exchange
- 2 Juvenile Intake Diversion
- 1 Information Technology to manage Electronic Records Management System

◆ What other factors are driving the growth?

- Code mandated diversion which requires public safety consideration
- County initiative concerning early intervention and prevention
- Board of Supervisors mandate for domestic violence services
- Communication and records management requirements
- Security of youth in newly expanded court holding facility

New Programs Since FY 2001



- ◆ Young Offender (age 13 and under) Treatment Services
- ◆ Juvenile Sex Offender Treatment Services
- ◆ Juvenile Intensive Supervision Program
- ◆ Psychological Assessment for Juveniles
- ◆ Victim Services
- ◆ Juvenile Drug Treatment Court
- ◆ Juvenile Intake Diversion Programs
- ◆ Mental Health Services in the Juvenile Detention Center and Less Secure Shelter
- ◆ Domestic Relations Supervised Visitation and Exchange Program
- ◆ Gang Prevention and Intervention Program
- ◆ Evening Reporting Center (currently grant funded)

Agency Reduction Priorities

Philosophy



◆ Guiding Principles for Selecting and Prioritizing Reductions

- Potential impact on public safety
- Maintaining core/essential mandates for Intake, Probation/Parole Supervision, Secure Detention and Emergency Shelter Care as set out in the Code of Virginia and Department of Juvenile Justice (DJJ) minimum standards
- Maintaining quality and integrity of core programs and services
- Judicial input

Reduction Priority 1 — Enterprise School Contract

LOB #81-02: Judicial/Court Services Administration

- ◆ **Total Net Reduction \$330,000; Total Position Reduction 0/0.0 SYEs**
- ◆ **Program Description**
 - Co-ed alternative day school, psycho-educational prevention program for up to 40 delinquent and/or at-risk adolescents
 - Collaborative effort of the Juvenile Court, County public schools, and the private sector
 - Referrals are made by the Juvenile Court, public schools, and the community
 - Referred youth are typically on suspension or have been expelled, have a history of poor academic performance or disruptive behavior in school
 - Supports prevention efforts of Human Services and the Juvenile Court
- ◆ **Population Served and Outcomes in School Year 2007 - 2008**
 - 26 students attended TES; 7 were court involved
 - 20 successfully completed the requirements of the program
 - 6 students earned high school diplomas and all 6 will attend college in the fall
 - 14 will return to mainstream education after TES
 - No students at TES were convicted of crimes while enrolled
- ◆ **Impact of Eliminating TES Contract**
 - Youth might be denied resources which enable them to improve academic skills, build positive social attitudes and decision making skills.

Reduction Priority 2 – Gang Intervention, Prevention, Education (IPE) Contract

LOB #81-02: Judicial/Court Services Administration

- ◆ **Total Net Reduction \$120,000; Total Position Reduction 0/0.0 SYEs**
- ◆ **Program Description**
 - Provides gang prevention/intervention services to youth and families. Two IPE counselors are assigned to provide community outreach and services to youth who are involved or at-risk of becoming involved in gangs.
 - Referrals are made by probation officers, police, county gang coordinator, schools, and public/private agencies. Provides supportive services for gang involved youth when other funds are not available.
 - Services are provided by a contract with Northern Virginia Family Services. The contract is managed by Court Services Administration staff.
 - Continuation of IPE services was approved by the Board of Supervisors in the FY 2009 budget after federal funding ended.

Reduction Priority 2 – Gang Intervention, Prevention, Education (IPE) Contract

♦ Population Served

- Both gang members and gang associated youth are included. A majority live in single parent homes.
- East County youth served are 15 - 17 years old, mostly male (70%) and mostly Latino
- South County youth served are 12 - 17 years old, mostly male (60%), 50% Latino and 50% African American
- 28 youth received services year-to-date in FY2009. It is anticipated the IPE program will serve over 120 families in FY2009.

♦ Reduction Impact

- Reduction in public safety and the Court's effort to divert youth from entering into gang life.
- Seriously impacts the court's ability to provide gang prevention and intervention services including: community and street outreach, individual and family intervention, volunteer mentoring, and employment opportunities to youth involved with or at risk of becoming involved with gangs.

Reduction Priority 3 – Young Offender Services Contract

LOB #81-01: Juvenile/Adult Investigation and Probation Services

- ◆ **Total Net Reduction \$82,000; Total Position Reduction 0/0.0 SYEs**
- ◆ **Program Description**
 - Provides *immediate*, age appropriate, mental health services to youth ages 9 – 13 who commit serious offenses; supplements probation supervision
 - Contracted with Multicultural Clinical Services
 - Intensive services are in place for 3 to 6 months and include:
 - Evaluation and assessment for mental health needs/services
 - Intensive home based counseling which involves the youth and family
 - Psychiatric assessment with short term medication management as required

Reduction Priority 3 – Young Offender Services Contract

♦ Population Served

- Children ages 9 – 13 charged with sexual offenses, property crimes, and assaults
- According to national research:
 - Young offender offense patterns reflect more serious crimes
 - Young offenders are more likely to continue their involvement in crime
 - Child delinquents are 2 to 3 times more likely to become serious, violent, chronic offenders than adolescents whose delinquent behavior starts in their teens
- Local research carried out in 2005 indicated significant mental health and behavioral problems for young offenders including:
 - 66% with persistent oppositional defiant behavior
 - 64% with behavior that hurts others or puts them in danger
 - 63% with impulsivity with aggressive behavior to others
 - 57% with chronic, aggressive behavior at school before age 13
 - 51% were depressed or withdrawn
 - 28% had suicidal thoughts or attempts
- 16 youth were treated in FY2007 and 9 were treated in FY2008

Reduction Priority 3 – Young Offender Services Contract

◆ Reduction Impact

- No access to Immediate age appropriate intervention with this population
- Increases potential for further court involvement
- Probation staff would need to request CSA funds and wait for services based on funding, if available
- Court involved youth age 13 or younger are more likely to become chronic adult offenders without early intervention
- Reduction in public safety
- Negatively impacts low income families who do not have resources to pay for private treatment

Reduction Priority 4 – Sex Offender Treatment Contract

LOB #81-01: Juvenile/Adult Investigation and Probation Services

◆ Total Net Reduction \$130,000; Total Position Reduction 0/0.0 SYEs

◆ Program Description

- Specialized sex offender treatment for youth and their families before the court for offenses such as: sexual assault, rape, sodomy.
- This community based service is the least restrictive and most cost effective method compared to residential services which exceed \$100,000.00 per year or commitment to state correctional facilities. Services at this level can prevent or reduce the need for future services in a residential setting.
- Court ordered services, which can be a condition of probation, are contracted with Multicultural Clinical Center and Center for Clinical Forensic Services. Services provided by certified sex offender treatment practitioners include:
 - Sex offender evaluations with recommendations for court dispositions
 - Individual/group/and family counseling
 - Polygraph examinations
- Sex offender evaluations are ordered by the court to aid in determining appropriate services, level of risk, and provide recommendations as to whether services should be rendered in a community based, residential, or correctional setting (DJJ).
- Obtaining services is *streamlined and immediately available* to the court and to probation staff.

Reduction Priority 4 – Sex Offender Treatment Contract

♦ Population Served

- In the last two years, services were provided to 113 sex offenders and their families. At any given time, between 50 and 60 juvenile sex offenders from Fairfax County are either under probation/parole supervision in the community, in residential treatment, or committed to the Department of Juvenile Justice. Studies on juvenile sex offenders report:
 - Nearly half of the sex crimes against children are committed by other children.
 - Juvenile sex offenses range from inappropriate experimentation to violent, predatory behavior.
 - Many adult sex offenders began sexually abusive behavior as children.
 - Alcohol and drug abuse is common among juvenile sex offenders.
 - Juvenile sex offenders typically prey on other children, often younger siblings or friends of siblings.
 - Proper treatment of juvenile sex offenders, which typically takes at least a year, reduces the likelihood that they will commit more sex crimes.

Reduction Priority 4 – Sex Offender Treatment Contract

◆ Reduction Impact

- Negative impact on public safety
- Limits the court's ability to receive timely sex offender evaluations for dispositional hearings
- The alternative is to request CSA funds and wait for services based on funding, if available
- Sex offender services are typically not covered by insurance and the majority of the families have financial limitations that make the cost of services prohibitive for this population.
- Local Community Services Board does not provide sex offender treatment
- With reduced treatment options, youth would be released into the community with no services and at high risk to re-offend
- Percentage may be placed in foster care

Reduction Priority 5 – Eliminate Supervised Visitation/Supervised Exchange (SVSE)

LOB #81-01: Juvenile/Adult Investigation and Probation Services

- ◆ **Total net reduction \$106,525; Total Position Reduction 2/2.0 SYEs**
- ◆ **Program Description**
 - SVSE provides a safe, neutral, affordable and age appropriate setting for visitation and exchange of children in court-referred cases.
 - SVSE began in November 2007 at the recommendation of the Board of Supervisors and the Domestic Violence Coordinating Council.
 - With current staff and volunteers, SVSE can provide visitation and exchange services to 60 families per month and is now operating at capacity.
 - Security services are provided by Juvenile Detention Center staff.
 - SVSE is the only local reduced-fee visitation and exchange program available. For profit SVSE programs charge \$75-\$100 per hour which is out of reach of most of our clients.

Reduction Priority 5 – Eliminate Supervised Visitation/Supervised Exchange (SVSE)

♦ Population Served

- Families in SVSE have a history or allegation of:
 - domestic violence (95%)
 - substance abuse (70%)
 - mental health problems (25%)
- Use of the program has grown steadily
 - FY2008 (November 2007 – June 2008): 68 families were served for an average of 12 weeks.
 - FY2009 YTD: 57 families have been served for an average of 13 weeks.

♦ Reduction Impact

- The period after separation is a danger for domestic violence victims and their families. It is when victims of domestic violence abuse are vulnerable to a sudden increase in violence and a shift in or intensification of abusive tactics.
 - Parents and children may be denied visitation due to lack of safe, affordable alternatives
 - Elimination of SVSE would have a negative impact on low income families
 - Children may experience visitation/exchange under unsafe conditions

Reduction Priority 6 – Eliminate Family Counseling Unit

LOB #81-01: Juvenile/Adult Investigation and Probation Services

◆ **Total net reduction: \$614,865; Total position reduction: 7/7.0 SYEs**

◆ **Program Description**

- Family Counseling unit was started in 1970 and supports programs throughout the Court Services Unit's continuum of services. Specific activities include:
 - Provides family counseling, evaluations, and education services for approximately 500 court involved families per year
 - Coordination of Code mandated assessments for Children in Need of Services, CHINS (truancy and runaway youth) prior to disposition by the court
 - Coordination of the Juvenile Drug Treatment Court Program
 - Family anger management, co-parenting, and alcohol and drug education programs
 - Bilingual services to Spanish speaking families
 - Progress and evaluation reports for the court

Reduction Priority 6 – Eliminate Family Counseling Unit

♦ Population Served

- Services are related primarily to domestic violence and domestic relations issues, a juvenile's emotional or behavioral problems, or child custody/support issues.
- 141 families in FY2008 were referred for family counseling by court, intake officers, and probation officers
- Residential clients in need of substance abuse education; 85 – 90 youth in residential placement receive substance abuse education per year.
- 50% do not have resources to pay for services by a private provider. The Community Services Board does not have the capacity to provide services.
- In FY2008 146 families attended family counseling educational seminars
- In FY2008 the Drug Treatment Court Program served 19 youth and their families. Youth involved in Drug Treatment Court have extensive histories of substance abuse which contributes to their delinquent behavior. These youth are at high-risk to continue substance abuse and criminal behavior.
- Provided individual and group counseling and education to 30 juveniles and their families in FY 2008 when cases were diverted from formal court involvement at Intake.
- Staff provided 100 mandated Interdisciplinary Team reports for truant/runaway youth. These reports provide recommendations to the judiciary for appropriate treatment and services at disposition.

Reduction Priority 6 – Eliminate Family Counseling Unit

◆ Reduction Impact

- Elimination of the Family Counseling Unit would have a negative impact on programs across the entire continuum of court services resulting in:
 - Untreated family dysfunction resulting in continued domestic violence
 - Reduction of Intake Officer's ability to divert children at earliest stage of criminal behavior resulting in more expensive, formal court involvement
 - Inability to get timely family evaluations and appropriate treatment
 - Lack of substance abuse education at residential programs
 - Elimination of the Juvenile Drug Treatment Court program which may lead to an increase in out-of-home placements and further delinquent behavior due to untreated substance abuse

Reduction Priority 7 – Eliminate Girls Probation House

LOB #81-06: Community Based Residential Treatment Services

- ◆ **Total Net Reduction \$833,910; Total Position Reduction 13/13.0 SYEs**
- ◆ **Program Description**
 - 12-bed community-based therapeutic residential group home founded in 1975, providing non-secure, long-term (6–9 month) treatment to girls placed by judicial order and their families.
 - Supports Code mandated juvenile probation services and keeps girls in need of such services in the community, close to their families.
 - Only program available for court ordered adolescent females in the county.
 - All treatment is designed to facilitate the resident's return to her home and community.
 - Specific services include:
 - Behavior modification program
 - Individual, group, and intensive family counseling sessions
 - Substance abuse education groups provided by Family Counseling Unit
 - On-site school program staffed by Fairfax County Public Schools

Reduction Priority 7 – Eliminate Girls Probation House

♦ Population Served

- Adolescent girls (ages 13 - 17) involved in chronic runaway, truancy and/or delinquent behavior e.g., gang involvement, burglary, shoplifting, auto theft, property crimes, assault
- 23 admissions in FY2007 and 30 admissions in FY2008.
- Girls sent to GPH have a wide range of problems. In FY2008:
 - 100% had a high level of family dysfunction and were in need of family counseling
 - 95% disclosed some type of trauma or were suspected to have been traumatized (physically, sexually or emotionally)
 - 90% had some type of educational challenge; 30% had been expelled from public school
 - 85% qualified for a mental health DSM IV-R diagnosis
 - 70% had been absent from their home without permission for some length of time
 - 56% had substance use/abuse issues
 - 50% had previously had some type of mental health treatment
 - 45% were on some type of medications
 - 6% (2) residents were pregnant when admitted

Reduction Priority 7– Eliminate Girls Probation House

◆ Reduction Impact

- Each year, services would be lost to 25 - 30 high-risk girls and their families
- Inability to provide residential treatment to youth and families in the community
- Cycle of family dysfunction will continue, impacting not only the youth, but their siblings
- Girls will be released home without residential intervention and resume high-risk behavior, the risk of reoffending will remain high. They will be a danger to themselves and the community
- Families cannot afford private placements and CSA placements are very limited. If placed through CSA, girls may wait for services based on funding, if available
- Percentage of these girls may be placed in foster care
- Some girls may be committed to state correctional facilities rather than being treated in their local community and are likely to receive limited services that are unlikely to effectively address the major underlying issues causing their behavior and family problems

Reduction Priority 8 – Eliminate Boys Probation House

LOB #81-06: Community Based Residential Treatment Services

◆ **Total Net Reduction \$1,180,781; Total Position Reduction 17/17.0 SYEs**

◆ **Program Description**

– 22-bed community-based, multi-program facility founded in 1982, providing non-secure residential treatment to adolescent male offenders placed by judicial order and their families, with the goal of reducing chronic delinquent behavior. Two separate programs operate in the facility:

- **Therapeutic Group Home Program** – highly structured long-term (9–12 month) program with a capacity of sixteen residents between ages 14 and 17. Program works with boys and their families to facilitate changes in behavior necessary for a successful return home. Services include:
 - Behavior modification program
 - Individual, group, and intensive family counseling
 - Substance abuse education groups provided by the Family Counseling Unit
 - Onsite school program staffed by Fairfax County Public Schools
- **Transitional Living Program** – 6–8 month program with a capacity of six residents between ages 17 and 18 for whom living at home is no longer an option. Youth are required to work full-time in the community and attend school. The program addresses employment issues and independent living skills.

Reduction Priority 8 – Eliminate Boys Probation House

♦ Population Served

- Adolescent males, most of whom have been involved in significant criminal behavior and who have not been successful with non-residential interventions.
- The facility had 57 admissions in FY2007 and 53 in FY2008
- Youth have a wide range of underlying problems. In FY2008:
 - 100% had a high level of family dysfunction and were in need of family counseling
 - 92% medium to high-risk to re-offend based on DJJ Risk Assessment Instrument
 - 73% expelled from public school
 - 60% convicted of offenses against persons (malicious wounding, assault, robbery)
 - 58% identified substance abuse issues
 - 32% qualified for a mental health DSM IV-R diagnosis
 - 23% actively gang involved

Reduction Priority 8 – Eliminate Boys Probation House

◆ Reduction Impact

- Public safety may be jeopardized by youth remaining in the community
- Without intensive residential intervention and significant behavioral change, these boys will remain at high-risk to re-offend
- Cycle of family dysfunction will continue, impacting not only the youth, but their siblings
- Families cannot afford private placements and CSA placements are very limited. If placed through CSA, boys may wait for services based on funding, if available
- Percentage of these boys may be placed in foster care
- Some boys may be committed to state correctional facilities and are unlikely to receive services to address their underlying issues
- Expelled youth will remain unsupervised in the community and be without educational opportunities
- BPH is the only public residential treatment facility in Fairfax County available to court involved criminal youth. Services would be lost to over 50 medium to high-risk youth and their families per year
- For paroled youth released from state correctional centers who have reached adulthood, living at home may not be an option. They may be forced to live in homeless shelters in the absence of the Transitional Living Program as there are no locally operated half-way houses.

Agency Reduction Priorities

Summary



Priority Ranking	Reduction Description	Positions	SYE	Net Reduction
1	Enterprise School	NA	NA	\$330,000
2	Gang Prevention Services	NA	NA	\$120,000
3	Young Offender Treatment Services	NA	NA	\$82,000
4	Sex Offender Treatment Services	NA	NA	\$130,000
5	Supervised Visitation & Exchange Program	2	2.0	\$106,525
6	Family Counseling Unit	7	7.0	\$614,865
7	Girls Probation House	13	13.0	\$833,910
8	Boys Probation House	17	17.0	\$1,180,781
TOTAL REDUCTION		39	39.0	\$3,398,081

Agency Reduction Priorities

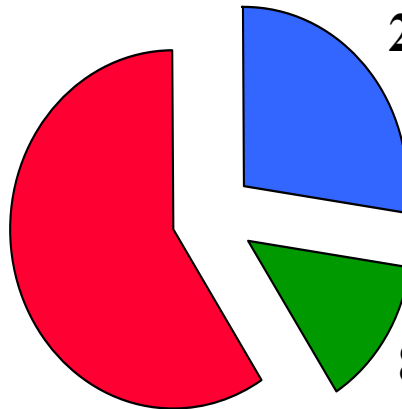
Reductions by LOB



Community-based Residential Treatment:

- Girls Probation House
- Boys Probation House

81-06
60%



81-01
27%

Probation Services:

- Young Offender
- Sex Offender
- Supervised Visitation
- Family Counseling

Judicial/Court Services Administration

- Enterprise School
- Gang Intervention, Prevention, Education (IPE)

81-02
13%

Summation

Eliminating treatment services and closing community-based residential treatment facilities for juvenile offenders goes against best practice and will have negative consequences for both the community and the youth involved. Youth who remain in the community without support or treatment:

- Pose a increased threat to public safety
- Are at increased risk of re-offending and using even more resources
- Are likely to be involved with self-destructive behaviors
- Are at risk of being victimized as a result of their behavior
- Are at risk of being placed in foster care
- Will increase the use of secure detention
- Will increase the demand for CSA funding

Eliminating programs that intervene with families with ongoing domestic problems:

- Will leave the cycle of violence unchanged
- Place the children in these families in danger of witnessing or being the victim of domestic violence
- Children will lose a safe alternative for visiting with non-custodial parents

All of these changes will have a disproportionate impact on families without financial resources

Appendices

- ◆ **A - Lines of Business 81-01 through 81-07**
- ◆ **B - Needs**
- ◆ **C - Challenges**
- ◆ **D - Case Scenarios**
 - Young Offender Treatment Services (page 45)
 - Sex Offender Treatment Services (page 46)
 - Supervised Visitation and Supervised Exchange Program (page 47)
 - Family Counseling Unit (page 48)
 - Girls Probation House (pages 49-51)
 - Boys Probation House
 - Therapeutic Program (pages 52-55)
 - Transitional Living Program (pages 56-58)

LOB 81-01 Highlights:

Juvenile/Adult Investigation and Probation Services

- ◆ **What We Do:** Juvenile and adult probation officers prepare pre-dispositional investigation and social history reports and provide probation supervision as ordered by the court. Youth and adults are provided counseling, supervision, monitoring, and specialized services as ordered by the court based on the emerging needs of the family.
- ◆ **Who We Serve:** Probation services are provided to all clients consistent with the court order placing them on probation. In FY2008 there were 1000 juvenile probation, 595 adult probation, and 1371 community service cases. Demographic and risk information for juvenile probationers
 - Gender: Females - 436 (25%), Males - 1306 (75%)
 - Risk Level: High - 139 (8.2%), Low - 776 (45.8), Moderate - 780 (46%)
 - Race: Black - 450 (31.9%), White - 806 (57.3%), Asian - 78 (5.5%), Other - 75 (5.3%)
 - Offense Type: Property - 325 (32.5%), Persons - 191 (19.1%), Drug and Alcohol - 152 (15.2%), Truant/Runaway - 141 (14.1%); Traffic/Other - 136 (13.6%), Public-57 (5.7%), Probation/Parole Violations - 8 (0.8%)
- ◆ Demographic and risk information for adult probationers. Total adult probationers 497 (as-of Sept 11th)
 - Sex: Males - 402 (81%), Females - 95 (19%)
 - Race: White - 238 (49%), Black - 132 (27%), Asian - 26 (5%), Hispanic - 90 (19%)
 - Employment: Employed - 355 (71%), Unemployed - 142 (29%)
 - Offense Type: Domestic Assault - 383 (74%), Other Intra-Family Offenses - 81 (16%), Other - 53 (10%)
- ◆ **Why We Do It:** The services in this Line of Business are mandated by the Code of Virginia Section: 16.1-233-235
- ◆ **Benefits and Value:** Probation Officers provide recommendations to the Court's judges to assist in making final dispositions considering the areas of community protection, personal accountability and competency development. Probation Officers supervise the juvenile or adult behavior and adherence to mandatory rules of probation. Probation staff works with other county agencies and public schools to implement supervision and treatment plans to reduce the likelihood of re-offending behavior.

LOB 81-02 Highlights:

Judicial/Court Services Administration

- ◆ **What We Do:** Judicial/Court Services Administration provides centralized management support to probation services and residential services for juveniles. Other centrally managed support functions include budget development, fiscal management, personnel, purchasing, information technology, facility planning, training, quality assurance and volunteer/intern program. Judicial Support provides Court Records Management and Public Information, Victims Services, Restitution Services, and the Volunteer Interpreter Program.
- ◆ **Who We Serve:** This line of business serves both internal clients (staff and judiciary), victims of juvenile crime, offenders and their families, and the general public. In FY 2008 the unit provided: services to 697 victims, monitoring of 575 new restitution cases, 2,511 hours of volunteer interpretation, 10,789 hours of other volunteer and intern work, 16,811 hours of staff training.
- ◆ **Why We Do It:** Services in this Line of Business are mandated by the Code of Virginia Section: 16.1-233-235
- ◆ **Benefits and Value:** Victim and Restitution Services are central to holding offenders accountable for their actions which is one of the components of the Balanced Approach. The volunteer/intern program increases the agency's ability to provide services to clients. In addition, the intern program provides a source of well trained potential workers.

LOB 81-03 Highlights:

Juvenile/Adult Intake

- ◆ **What We Do:** Juvenile Intake staff screen complaints and process petitions on all juveniles alleged to have committed delinquent or CHINS offenses. Intake officers decide whether to divert a case or send it to court for formal processing. Diversion supervision is provided by intake staff. If a court petition is taken, Intake staff also assess risk and may detain youth. Adult Intake processes complaints and assists families regarding custody, visitation, support, spouse abuse, and other intra-family issues.
- ◆ **Who We Serve:** In FY2008, juvenile and adult intake staff processed 13,422 complaints involving 8358 individuals. 33.9% were custody/visitation issues, 41.9% involved delinquency and CHINS; complaints involved 33.1% Black youth, 21.1% Hispanic youth, 58.2% White youth, 5% Asian youth, 3.7% “other” youth. 75% of delinquency/CHINS complaints involved males, 25% involved females.
- ◆ **Why We Do It:** The services in this Line of Business are mandated by the Code of Virginia Section: 16.1-233-235
- ◆ **Benefits and Value:** Intake officers must be familiar with the Court’s jurisdiction and venue, how to interpret and apply the Virginia Code (similar to Magistrates), what constitutes a criminal offense, and the grounds for accepting certain civil petitions. Intake staff serve as the entry point for law enforcement, citizens, and other public officials to access court services and judicial process. Complainants must have enough evidence to establish probable cause for each and every element of the offense or act alleged. Intake staff ensure that statutory criteria are met and the welfare of the youth, adult, and family are balanced with the protection of the community and the rights of the victim. Intake staff divert from or within the juvenile justice system, to the extent possible, consistent with the protection of public safety, those children who can be cared for or treated through alternative programs.

LOB 81-04 Highlights:

Shelter Care

- ◆ **What We Do:** The Less Secure Shelter (LSS) is a twelve-bed residential facility for youth awaiting adjudication or final disposition, pending placements or serving sentences. Fairfax County Public Schools provide a year-round academic curriculum.
- ◆ **Who We Serve:** LSS houses both male and female adolescents. In FY2008 LSS provided shelter care to 345 youth. The average length of stay in the program was 10.5 days.
 - Males - 183; Females – 162; Average Age - 16
 - Hispanic: 133 (33%)
 - White: 98 (28%)
 - Black: 92 (27%)
 - Asian: 26 (7%)
 - Other: 16 (5%)
- ◆ **Why We Do It:** Services in this Line of Business are mandated by the Code of Virginia Section: 16.1-233-235
- ◆ **Benefits and Value:** The court may place juveniles in LSS who are charged with CHINS or minor delinquency offenses who need to be removed from the community. The program provides residents a safe, stable and structured living situation. It addresses the needs of the resident and family through individual, group and family conferences. Allows the Court to assess the needs and provide for the long-term services for the youth and family.

LOB 81-05 Highlights:

Supervised Release Services

- ◆ **What We Do:** Supervised Release Services (SRS) is an alternative to secure detention or shelter care providing highly structured supervision and electronic monitoring services for youth who are awaiting adjudication or final disposition of charges and who might otherwise be placed out of home in either secure detention or shelter care.
- ◆ **Who We Serve:** SRS supervises both male and female youth who have been court ordered into the program. In FY2008, SRS had 278 outreach detention placements and 177 electronic monitoring cases.

Female – 164 (27.7%); Male – 427 (72.3%)

Asian	46 (7.8%)	13 and under	48	(8.1%)
Black	161 (27.3%)	14	90	(15.2%)
White	164 (27.8%)	15	128	(21.7%)
Hispanic	168 (28.5%)	16	171	(28.9%)
Other	51 (8.6%)	17	147	(24.9%)
		18+	7	(1.2%)

- ◆ **Why We Do It:** The services in this Line of Business are mandated by the Code of Virginia Section: 16.1-233-235
- ◆ **Benefits and Value:** Provides a lower cost alternative to secure detention while protecting public safety through close supervision. Cost of supervising a youth in this program is \$44.00 per day, compared to \$232.00 per day for maintaining youth in Juvenile Detention. Only 4.5% of youth placed in this program re-offend while in the program.

LOB 81-06 Highlights:

Long Term Residential Care

- ◆ **What We Do:** There are two programs in Community Based Long Term Residential Treatment Services: Boys Probation House (BPH) and Girls Probation House (GPH). BPH is a 22-bed community based, multi-program facility providing non-secure residential treatment to adolescent male offenders. GPH is a 12-bed therapeutic group home for adolescent females. All youth are court ordered into the programs.
- ◆ **Who We Serve:** Together, both programs provided services to 89 youth in FY2008. The average length of stay was 87.5 days in GPH and 188 days in BPH.

<ul style="list-style-type: none">- GPH: Average Age: 15- Black: 12 (33%)- Hispanic: 13 (36%)- White: 9 (25%)- Other: 2 (6%)- GPH Risk Level:<ul style="list-style-type: none">• Low - 6• Medium - 21• High - 7	<ul style="list-style-type: none">BPH: Average Age: 17Black: 24 (45%)Hispanic: 13 (24%)White: 10 (19%)Other: 6 (12%)BPH Risk Level:<ul style="list-style-type: none">Low - 4Medium - 32High - 17
--	---
- ◆ **Why We Do It:** Services in this Line of Business are mandated by the Code of Virginia Section: 16.1-233-235
- ◆ **Benefits and Value:** There are very few long-term residential treatment programs for court-involved adolescents in Northern Virginia. BPH and GPH allow the Court to provide residential treatment in a timely fashion, without going through the CSA process. It allows families of the youth to participate in treatment services as well. Youth placed in these two programs have lower recidivism rates than those youth who are placed in state correctional facilities.

LOB 81-07 Highlights:

Juvenile Detention Services

- ◆ **What We Do:** The Juvenile Detention Center (JDC) is a 121-bed co-educational secure residential facility which holds criminal juvenile offenders who have been ordered detained because they pose a serious threat to themselves and/or the public. It is the only juvenile detention center in Virginia that is operated by a Court Services Unit. JDC provides counseling, education, recreation, and emergency crisis services. One unit, Beta Program, houses a six-month post-dispositional sentencing and treatment program. Educational services are provided by 16 teachers and a principal provided by Fairfax County Public Schools.
- ◆ **Who We Serve:** In FY2008 there were 1178 placements to the Juvenile Detention Center (JDC).
 - Males: 944 (80%); Females: 234 (20%)
 - Black: 427 (36%); Hispanic: 355 (30%); White: 282 (24%); Asian: 65 (6%); Other: 49 (4%)
 - Age: 13 & under: 58 (5%); 14: 135 (11%); 15: 235 (20%); 16: 358 (30%); 17: 391 (33%)
 - Placing Offenses: Drugs and Alcohol 90 (5.9), Other 194 (12.9), Persons 363 (24.0), Probation & Parole Violations 340 (22.5), Property 401 (26.5), Public 69 (4.6), Status 19 (1.3), Traffic 38 (2.5)
- ◆ **Why We Do It:** Services in this Line of Business are mandated by the Code of Virginia Section: 16.1-233-235.
- ◆ **Benefits and Value:** Provides the Court with a safe and secure environment for youth that have to be removed from the community for serious delinquent behavior. Provides a community-based detention facility for youth in police custody enabling officers to return to their patrol duties in a short period of time. Also allows access by parents, attorneys, and probation officers to youth while awaiting court hearings. Provides for the educational needs of the youth consistent with the Fairfax County Public School system. Also provides assessment and crisis-intervention of mental health issues and medical screening for this population. The Beta Program provides the Court an alternative to committing youth to the Department of Juvenile Justice and serves as a residential treatment facility providing behavior conduct, mental health, and substance abuse services for up to 15 boys and girls.

Agency Needs

Additional Programs and Services

- ◆ If there had been sufficient funding in the last few years, the agency would have addressed the following:
 - Kept the case management component of the Young Offender Program
 - Kept the case management component of the Juvenile Sex Offender Program
 - Reinstated a workforce training program and develop an apprenticeship program for youth on probation
 - In collaboration with other county agencies, expanded mental health, substance abuse, and mental health transitional services in secure and community based residential programs.
 - Provided a full-time coordinator for the Juvenile Drug Treatment Court Program
 - Expanded gang prevention and intervention services to all 4 field probation units
 - Expanded the Juvenile Diversion Program to all juvenile intake offices

Agency Needs

Additional Programs and Services (continued)

- ◆ Additional Programs and Services
 - Expanded Victim Services/Restitution case management services
 - Expanded Supervised Visitation and Exchange Services with dedicated security staff to all field probation offices
 - Reduced adult probation caseload size from 85 to 75 cases per officer
 - Provide staffing for the new shelter care facility (building has been approved but not staff)
 - Provided additional transition services for youth released from court residential programs
 - Increased alternatives to detention while maintaining public safety by
 - providing a day treatment program that includes gender specific programs,
 - increasing Supervised Release and Electronic Monitoring services,
 - expanding the Evening Reporting Center program, and
 - expanding the Intensive Supervision Program

Agency Challenges

The agency expects several challenges that will have a negative impact on achieving its strategic goals.

- ◆ Citizen expectations for high quality case management and other services
- ◆ Addressing the mental health and substance abuse treatment needs of youth and families within the court environment
- ◆ Meeting the needs of the cultural and diverse community
- ◆ Limited services for non-English speaking families
 - Need for additional bilingual staff and interpreter services
 - Case management and counseling/treatment services in probation and residential programs
- ◆ Maintaining reasonable caseload size for juvenile and adult probation
- ◆ Maintaining a Safe and Caring Communities

Agency Challenges (continued)

- ◆ Limited gang prevention and intervention services
- ◆ Providing a full continuum of community-based treatment options for youth ordered into residential care
- ◆ **Maintaining youth in the community rather than out-of-home placements**
- ◆ Managing information and court records
 - Multiple information systems at state and county level
 - Remaining current with changes to information technology
 - Moving from manual record keeping to electronic records management
- ◆ Limited ability to serve victims of juvenile crime

Case Scenarios – Reduction Priority 3

Young Offender Treatment Services (\$82,000)

KB is a 13 year old Hispanic, foreign-born female who was before the court on a shoplifting charge. While the charge was minimal, the youth had been removed from her mother's care at age 10, to live with her grandmother, and was at risk for foster care placement. She received approximately 6 months of intensive home based services through the Multicultural Center. Counseling services were provided by a culturally-competent family counselor. Through these intense services abandonment issues were identified and strategies were developed to effectively help the youth cope with the loss of her mother. KB successfully completed probation and has not re-offended. The family has financial limitations and could not have afforded to pay for the treatment services privately. Comprehensive Services Act funds could have been applied for however Young Offender funds were able to be implemented immediately. If CSA funds were required it is estimated that it would have taken 60 to 90 days for approval.

Case Scenarios – Reduction Priority 4

Sex Offender Treatment Services (\$130,000)

IG is a 14 year old Hispanic male. He was brought before the court in June 2005 for two counts of sodomy. The victim was his 5 year old niece. This was his first offense. The charge was amended to aggravated sexual battery. He received a suspended commitment to a state correctional facility, was placed on probation and was ordered to have a sex offender evaluation and follow treatment. IG was in treatment for approximately 1.5 years receiving individual, family and group counseling. Treatment was paid for with program funds. He did extremely well in treatment and gave no indication of re-offending when a polygraph test was administered. Since the victim was a family member, separate but joint work occurred with the family to resolve the family issues. IG progressed so favorably that he was able to return to his base school.

This is a family with a single mother who had significant financial restraints she would not have been in a position to pay for services and the local Community Services Board does not have services for sex offenders. Without funding for the services, there was a high probability for out of home placement either residentially or through the Virginia Department of Juvenile Justice. The community based treatment allowed the youth to stay in the community/home and receive treatment. The approximate cost for services was \$9,000 - \$10,000 in comparison to residential treatment which costs in excess of \$100,000 per year.

Case Scenarios – Reduction Priority 5

Supervised Visitation and Supervised Exchange Program (\$106,525)

Mom had been abused by Dad intermittently throughout their eight year marriage. There were long periods of time without abuse, but when abuse occurred it was bad. Both parents are working graduate professionals. Mom was embarrassed and knew how much Dad loved the kids so she refused to act for her own safety.

The family was on vacation with extended family in Florida. Dad became impatient with his daughter and kicked her during an aquarium outing. Then he punched Mom when she confronted him about what he had done. The incident was caught on tape, police were called, and Dad was charged.

Mom filed a protective order here in Fairfax to protect self and children. The family was ordered into our program. Dad gets to see the children under close supervision. The kids truly enjoy the time they have with Dad. Mom has reported that knowing the kids can see Dad safely without her has given her the courage to protect herself. She has said that she would have felt pulled back into the relationship for the sake of the kids had there not been a safe way for him to see them. The financial strain of legal proceedings and divorce would have made it impossible for them to pay for an outside supervisor. Dad has said if we weren't involved with our lower fees he would have to choose between paying child support or paying to see the kids.

Case Scenarios – Reduction Priority 6

Family Counseling Unit (\$614,865)

This family is from Korea. There are six children who range in age from 17 to 2 years old. The oldest daughter is court-involved. There is a long history of marital and family difficulties, including a history of domestic violence. As the family counselor, I also suspect child abuse but have not yet found sufficient evidence. The family's life is chaotic—the parents are in conflict and the children are in disagreement with each other and frequently with the parents. Both parents are aware that the children are being negatively affected by the chaos and conflict, but neither knows how to improve the situation.

The court-involved child and the father remain away from home in order to avoid the family problems. The mother is overwhelmed with parental and household responsibilities and appears to be depressed. This family is experiencing many of the same issues as those listed for the first case. The difference is that, due to cultural and economic factors, the parents have no plans to separate or divorce. Therefore, without assistance, this family is destined to remain in this situation and involved with the court. It is also likely that the younger children will become involved with the court.

Due to cultural issues, this family is not likely to seek help without court involvement. The family members will also not seek private counseling because they are ashamed. According to both parents, they are well-known within the small Korean community and, consequently, would be disgraced. In addition, the family counselor is able to consult with the probation officer. The family does not advise the probation officer of the situation, and it is highly unlikely that a private counselor would be permitted to consult with the probation officer by the family.

Case Scenarios – Reduction Priority 7

Girls Probation House (\$833,910)

JS is a sixteen-year old African American female who was placed on twelve months of supervised probation on April 21, 2008 for a CHINS-Runaway offense. This is her first contact with this Court. Prior to being placed on probation, JS left her legal place of residence without permission on six separate occasions. Other concerns included truancy, alcohol, and drug use. Her behavior began to decline after having reported that she was raped by her maternal grandfather at the age of nine. She did not report this rape until after her grandfather had passed away and only reported it after having been caught having sex in the home. The maternal grandfather was HIV positive. JS's mother did not believe that she was raped and therefore did not seek supportive counseling services for her.

JS continued to exhibit defiant behavior while on probation. She refused to participate in any services that would have the potential of helping her. After being on probation for one month, she missed curfew on several occasions, smoked marijuana, had two incidents of police contact where she and her siblings were engaging in physical altercations, and also skipped school.

Case Scenarios – Reduction Priority 7

Girls Probation House (\$833,910)

(continued)

J's probation officer referred her to the Girls Probation House as she had not responded to probation supervision. Her behavior continued to be problematic and escalated to the point of being removed from her home. J entered the Girls Probation House on July 22, 2008. Thus far, she has been cooperative with the program's rules and structure. However, her mother's lack of participation with the parental component has been inconsistent. Ms. S has indicated that her top priority is to find the family a place to live. The family has not had a stable place to live since J entered the program. She cancels at the last minute stating that she does not have transportation. She has only attended one family session since J was admitted to the program. The expectation is that parents must attend family therapy once per week. J has had only two home visits since her admission to the program. On other occasions where she was eligible to go home, her mother failed to arrange transportation. J does not have a relationship with her biological father.

An important aspect of J's life is her mother's illnesses. J's mother is HIV positive and is currently not taking any medication to help her manage the disease. Additionally, the mother suffered from a brain aneurysm in 2001 which led to her having two strokes. J admits that her truancy related issues were a result of her staying at home to care for her mother.

Case Scenarios – Reduction Priority 7

Girls Probation House (\$833,910)

(continued)

J's siblings also have behavioral issues. Her sister is under the care of a psychiatrist at South County Mental Health Services and was admitted to Leland House. She attends Burke Center and is a special education student. Her brother is described as angry and is currently enrolled in a Summit program through Fairfax County Public Schools.

The family has had a vast array of services provided to them in an effort to assist them in managing the intense level of dysfunction. The Northern Virginia Aids Ministry has been involved with this family for the past three years and provides mentoring services. Joan views this as supportive and has a close relationship with the mentor. Other agency involvement includes: Circles of Hope (home based counseling), South County Mental Health Center, Child Protective Services, Victoria Trans-Cultural Clinical Center (home based counseling), and Alcohol and Drug Services. It should be noted that CPS was contacted by Burke Center as a result of J's younger brother bringing pornography to school. Additionally, it was reported that Ms. S's two oldest children were taken away from her by Alexandria City Child Protective Services as a result of her substance abuse issues at the time her children were born. Fairfax County Child Protective Services involvement is ongoing. There was a report of physical abuse by J's father in October 2006. No services were recommended.

Case Scenarios – Reduction Priority 8

Boys Probation House (\$1,180,781)

Therapeutic Program

TJ is a 16 year old male who had not had any previous court services prior to his commitment to a state correctional facility on 2/13/06. He was found guilty of throwing a missile at an occupied building, possession of marijuana with intent to sell and possession of marijuana with intent to distribute. TJ served a six month sentence at Natural Bridge Juvenile Correctional Center. While there he had anger management and substance abuse treatment. He was released from Natural Bridge on 8/18/06.

TJ's parents are separated and he lives with his father. His father was involved with the court system in the fall of 2001 due to driving while intoxicated. Due to the offense his license was suspended and restricted for just work for a year. He had to take ASAP classes. He was also involved in an assault in 1992 and he had three domestic assault petitions between 2000 and 2002. TJ's mother has no involvement with the court system.

Case Scenarios – Reduction Priority 8

Boys Probation House (\$1,180,781)

Therapeutic Program (continued)

After being released from the Correctional Center, between 8/18/06 and 2/6/07 TJ was charged with domestic assault, receiving stolen property, trespass school property, unauthorized use of auto, possession of burglary tools, and gang participation. TJ's probation officer referred him to the Therapeutic Program at Boys Probation House on 2/13/07. On 3/12/08 he was court ordered into the program.

TJ spent eleven and a half months in the program. While there he was enrolled in the Boys Probation House School Program. He did well in the school where his grades improved in all of his subjects. This achievement had him believing and wanting to complete high school. TJ is now in the 12th grade and looking forward to graduating this year.

Case Scenarios – Reduction Priority 8

Boys Probation House (\$1,180,781)

Therapeutic Program (continued)

TJ also improved his relationship with his parents, where he was more honest with them and willing to follow their rules. He worked on his anger, decision making skills and making new friends. TJ denied any past or present gang involvement or affiliation. Although, Police Officers in the neighborhood believe that John and his friends are involved in gang activity, possibly the Culmore City gang. Making new friends was a big hurdle for him. TJ wanted to hang on to his old friends but after being in the program for awhile, he understood that the best decision for him was to move on and find some new friends that would not get him into trouble.

When TJ entered the program his girlfriend was pregnant, she had a baby boy while he was in the program. John stated he wanted to be part of his son's life and a good father. While in the program John took parenting classes. He saved his allowance money for diapers and anything else his son needed.

Case Scenarios – Reduction Priority 8

Boys Probation House (\$1,180,781)

Therapeutic Program (continued)

TJ participated in daily group counseling and weekly family counseling. He also participated in approximately three individual counseling sessions per week along with monthly treatment team meetings. TJ also attended ADS group once a week. He participated in weekly life skills groups and weekly nutrition classes. He also participated in daily physical activity.

TJ graduated from the program and participated in the aftercare component of the program with his parents. He is in school working towards graduating this year. He is also is working and helping support his son.

Case Scenarios – Reduction Priority 8

Boys Probation House (\$1,180,781)

Transitional Living Program

JD was first placed on probation for larceny when he was 14 years and had also participated in outpatient counseling through the courts. His father had been shot five years earlier in a drug related matter. His mother was a heroin addict who was in and out of treatment programs. She had also been diagnosed with depression.

JD's psychological evaluation reported that he suffered from trauma associated with past sexual abuse he suffered at the hands of an older male neighbor. This abuse was ongoing for years. He was also having difficulty dealing with the death of his father.

JD began using drugs and alcohol at the same time he became court involved. JD had difficulty complying with probation and the court's orders. Attempts at outpatient counseling and ADS services were unsuccessful. He also continued to pick up more charges including breaking and entering, grand larceny, unauthorized use, and possession of burglary tools. He spent the next two years in and out of the Juvenile Detention Center awaiting disposition on his new charges and serving sentences for probation violations. His mother was then incarcerated for narcotics and they were soon evicted from their home. After repeated attempts at community services failed and after being convicted of a robbery charge JD was committed to the Department of Juvenile Justice.

Case Scenarios – Reduction Priority 8

Boys Probation House (\$1,180,781)

Transitional Living Program (continued)

JD spent a year in the Beaumont facility in Richmond Virginia. When he was scheduled to return to Fairfax County he had no home to return to. His mother was out of jail, but remained homeless. He was seventeen years old, had completed only the ninth grade, had no skills and was now on parole in the community. The parole officer referred JD to the Transitional Living Program at Boys Probation House. He was accepted into the program and transported there by state officers. His mother had no transportation, no job, and no means of supporting him. JD had expressed to the Boys Probation House staff that he wanted to turn his life around and he wanted to try and support his mother.

JD spent seven months in the program. While there he was enrolled in the Independent Study Program and was able to obtain his GED. He also learned how to build a resume, fill out job applications and interview for a job. He was able to gain and maintain full time employment. He learned to open a bank account, how to balance a checkbook and budget his money. He learned about credit cards and taxes. He learned about time management and organizational skills. When he turned eighteen in the program he visited a recruiter and registered for selective service and to vote.

Case Scenarios – Reduction Priority 8

Boys Probation House (\$1,180,781)

Transitional Living Program (continued)

He was also able to participate in weekly counseling sessions with staff and completed treatment work around his anger and about grief and loss. He began to understand what it meant to be a responsible member of a community and about empathy and expressing feelings. JD explored different housing opportunities in preparation for graduation from the program. He was able to put a deposit down on a room near his place of employment.

JD left the program but participated in the aftercare component. He had saved over \$3500, had his GED, was working full time and had secured a place to live. Six months after being released from the program JD's parole ended successfully.