

Fairfax County, Virginia



LINES OF BUSINESS

February 2016

JUVENILE AND DOMESTIC RELATIONS DISTRICT COURT

*County Lines of Business (LOBs)
Presentation to the Board of Supervisors*



www.fairfaxcounty.gov/budget/2016-lines-of-business.htm



OUTLINE OF TODAY'S PRESENTATION

1. Department Overview
2. How LOBs relate to the County Vision Elements
3. High level view of Lines of Business (LOBS)
4. Metrics
5. Trends and Challenges
6. Looking Forward
7. Discussion

*Note: See **www.fairfaxcounty.gov/budget/2016-lines-of-business.htm** to access all LOBs documents and presentations.*



VISION | MISSION | VALUES

VISION

AS PUBLIC SERVANTS, LEAD THE NATION:

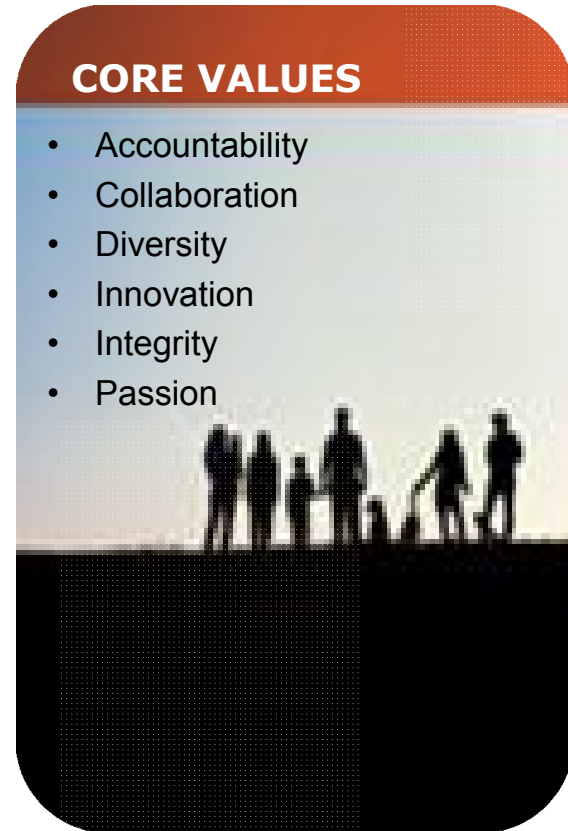
- In delivering evidence-based, sustainable and measurable services to clients in partnership with our community.
- In building on individual and family strengths to improve client outcomes while remaining focused on public safety and promoting equal and effective justice.

MISSION

To provide efficient, effective and equitable probation and residential services; To promote positive behavior change and the reduction of illegal conduct for those children and adults who come within the court's authority; To strive to do this within a framework of accountability consistent with the well-being of the client, the family, and the protection of the community.

CORE VALUES

- Accountability
- Collaboration
- Diversity
- Innovation
- Integrity
- Passion





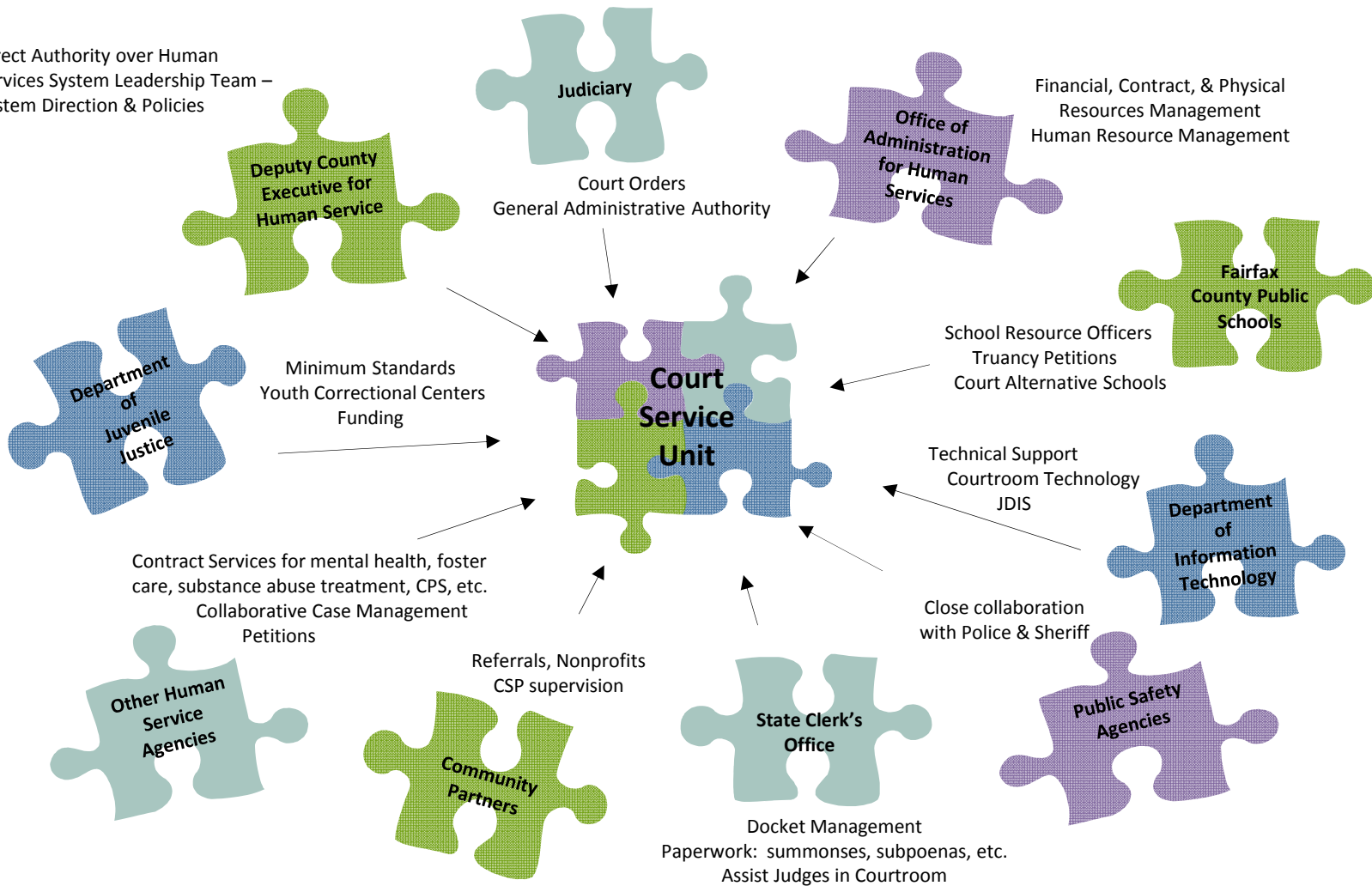
DEPARTMENT OVERVIEW

- **Adjudication:** The Fairfax County Juvenile and Domestic Relations District Court (JDRDC) is responsible for adjudicating juvenile matters, offenses committed by adults against juveniles, and family matters except divorce to residents
- **Youth Services:** The Court Services Unit (CSU) offers comprehensive intake, probation and residential services for delinquent and status offense youth under the legal age of 18 and post-adjudication services until age 21
- **Adult Services:** The CSU provides services to adults experiencing domestic and/or family difficulties and adult probation services
- **State Regulated:** Although the CSU unit is locally operated, agency activities are regulated by the Virginia Department of Juvenile Justice (DJJ) and the Virginia Department of Criminal Justice Services (DCJS) (adult probation)
- **Balanced Approach:** The agency incorporates the overall philosophy of the balanced approach providing for public safety, holding offenders accountable, and offering services and programs designed to change behavior using evidence-based practices.



SERVICE INTEGRATION

Direct Authority over Human Services System Leadership Team – System Direction & Policies





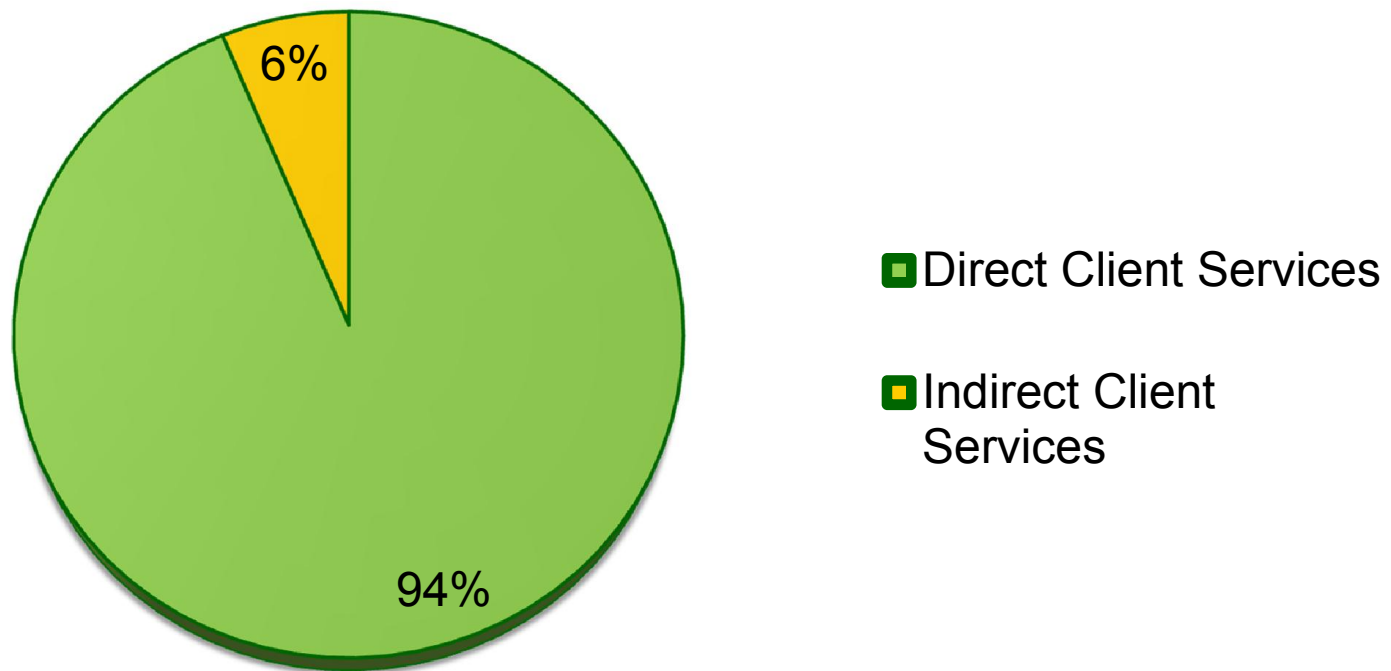
DEPARTMENT RESOURCES

Category	FY 2014 Actual	FY 2015 Actual	FY 2016 Adopted
FUNDING			
<u>Expenditures:</u>			
Compensation	\$18,593,382	\$18,964,747	\$19,987,078
Operating Expenses	1,926,805	2,915,671	2,602,583
Capital Equipment	116,436	77,322	0
Total Expenditures	\$20,636,623	\$21,957,740	\$22,589,661
General Fund Revenue	\$5,657,741	\$6,119,787	\$7,579,979
Net Cost/(Savings) to General Fund	\$14,978,882	\$15,837,953	\$15,009,682
POSITIONS			
Authorized Positions/Full-Time Equivalents (FTEs)			
<u>Positions:</u>			
Regular	302 / 300.5	303 / 301.5	303 / 301.5
State	43 / 43	43 / 43	43 / 43
Total Positions	345 / 343.5	346 / 344.5	346 / 344.5



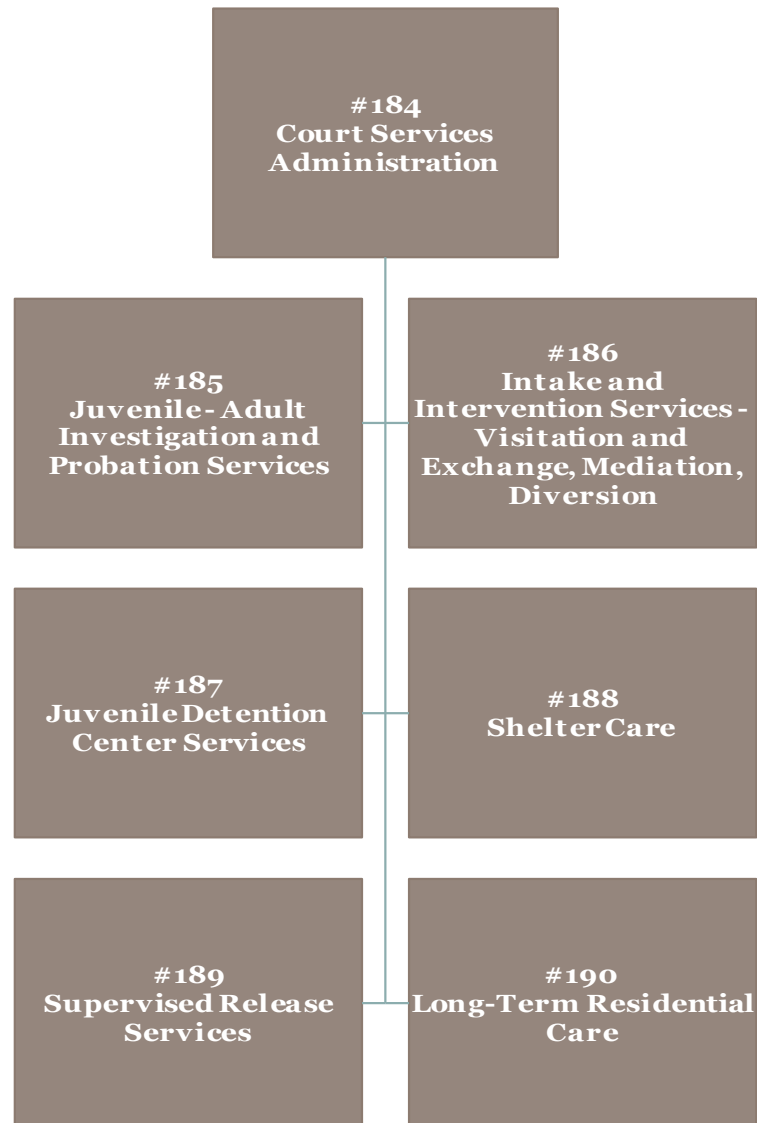
BY THE NUMBERS

Percentage of Staff Providing Direct Client Services





LOBS AT A GLANCE





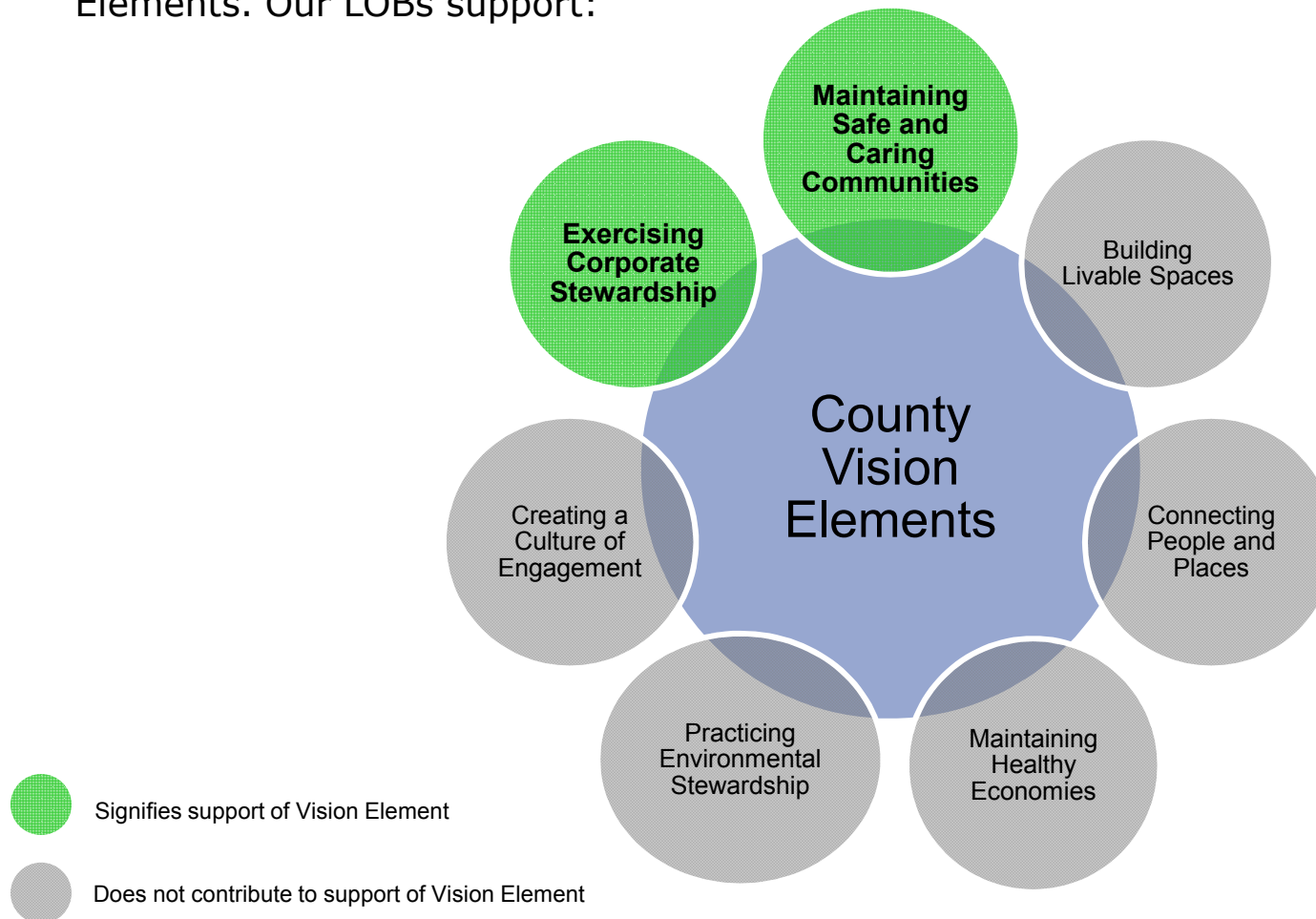
LOBS SUMMARY TABLE

LOB #	LOB Title	FY 2016 Adopted	
		Disbursements	Positions
184	Court Services Administration	\$3,676,677	69
185	Juvenile - Adult Investigation and Probation Services	3,331,573	67
186	Intake and Intervention Services - Visitation and Exchange, Mediation, Diversion	2,866,160	37
187	Juvenile Detention Center Services	7,593,265	99
188	Shelter Care	952,216	14
189	Supervised Release Services	1,140,465	16
190	Long-Term Residential Care	3,029,305	44
Total		\$22,589,661	346



COUNTY VISION ELEMENTS

The purpose of the LOBs process and the validation process performed by staff and management is to array the relevance of all LOBs according to the County's Vision Elements. Our LOBs support:





LINES OF BUSINESS SUMMARY

#184 – Court Services Administration

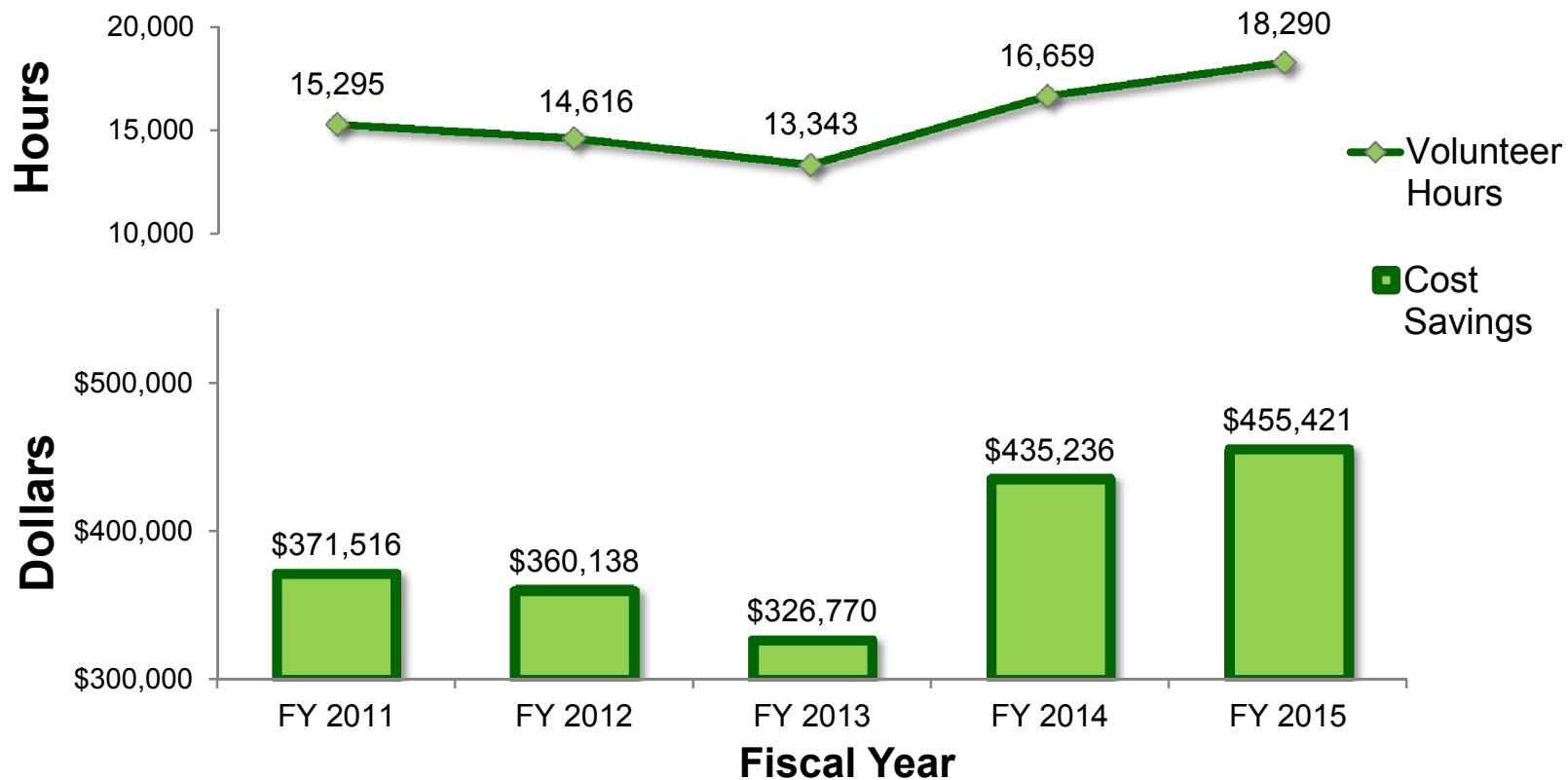
- **Oversight of Services Delivery** for juvenile/ adult probation and juvenile residential services
- **Judicial Support** – assistance to court units, judges, and state employees who are assigned to the Clerk of Court
- **Centralized Administrative Services**
 - Volunteers and Interns
 - Volunteer Interpreter Program
 - Victim Services Program
 - Staff Training
 - Research & Development
 - Courthouse IT
 - Facilities Management
 - Fiscal Management
 - Human Resources





COST SAVINGS

Average Cost Savings to Community Organizations / County Agency from Volunteer Services - FY 2015

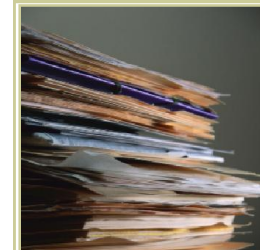




LINES OF BUSINESS SUMMARY

#185 – Juvenile-Adult Investigation and Probation Service

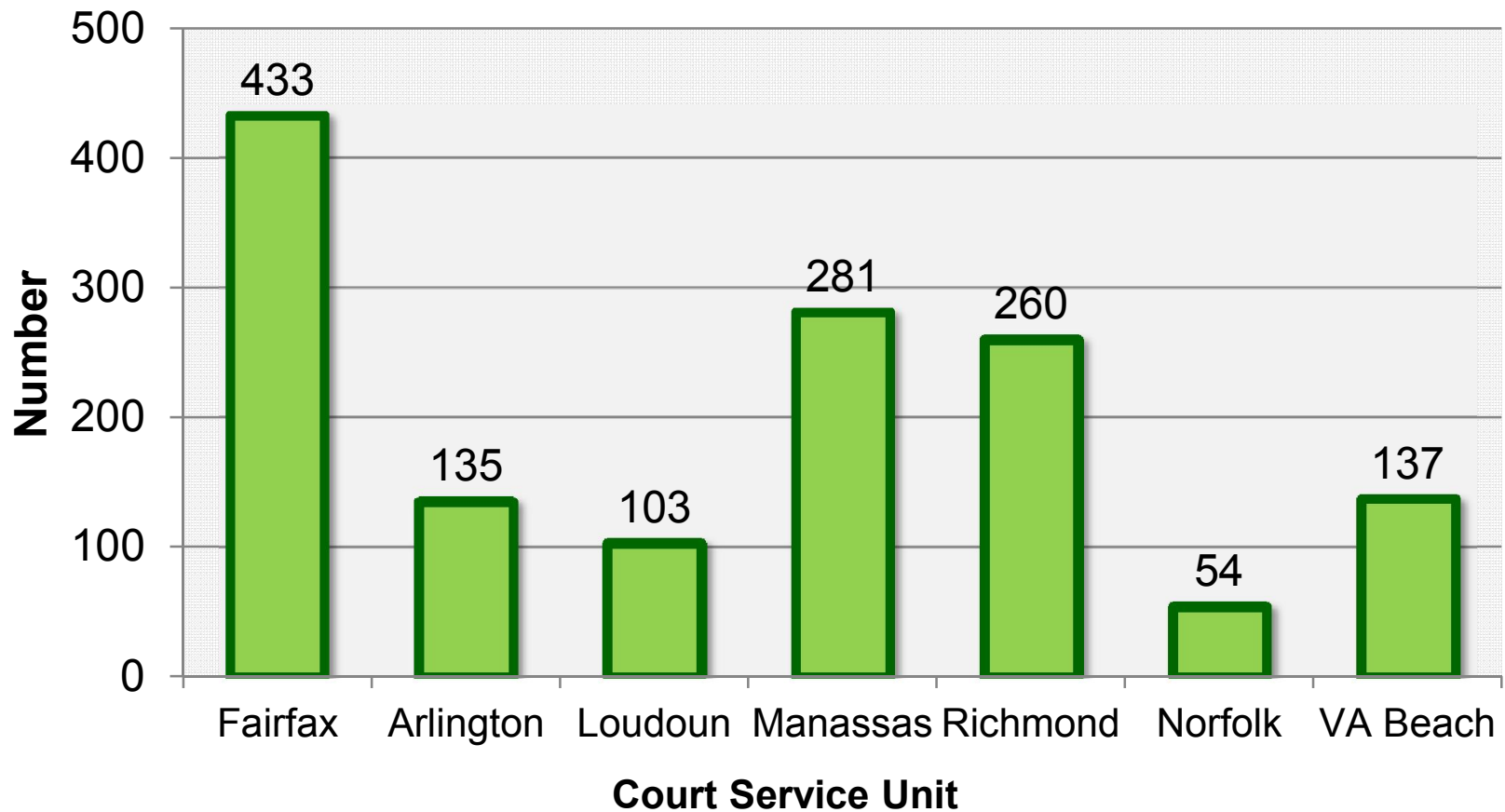
- **Positive Behavioral Changes** are promoted to reduce illegal conduct for those who come within the court's authority
- **Community Protection** - improves the safety of the public
- **Personal Accountability** and **Competency Development** are used as a framework
 - Juvenile Probation
 - Adult Probation
 - Structured Decision Making
 - Assessment Screening
 - Trauma Screening
 - Pre-Dispositional Reports
 - Social History Reports





JURISDICTION COMPARISON

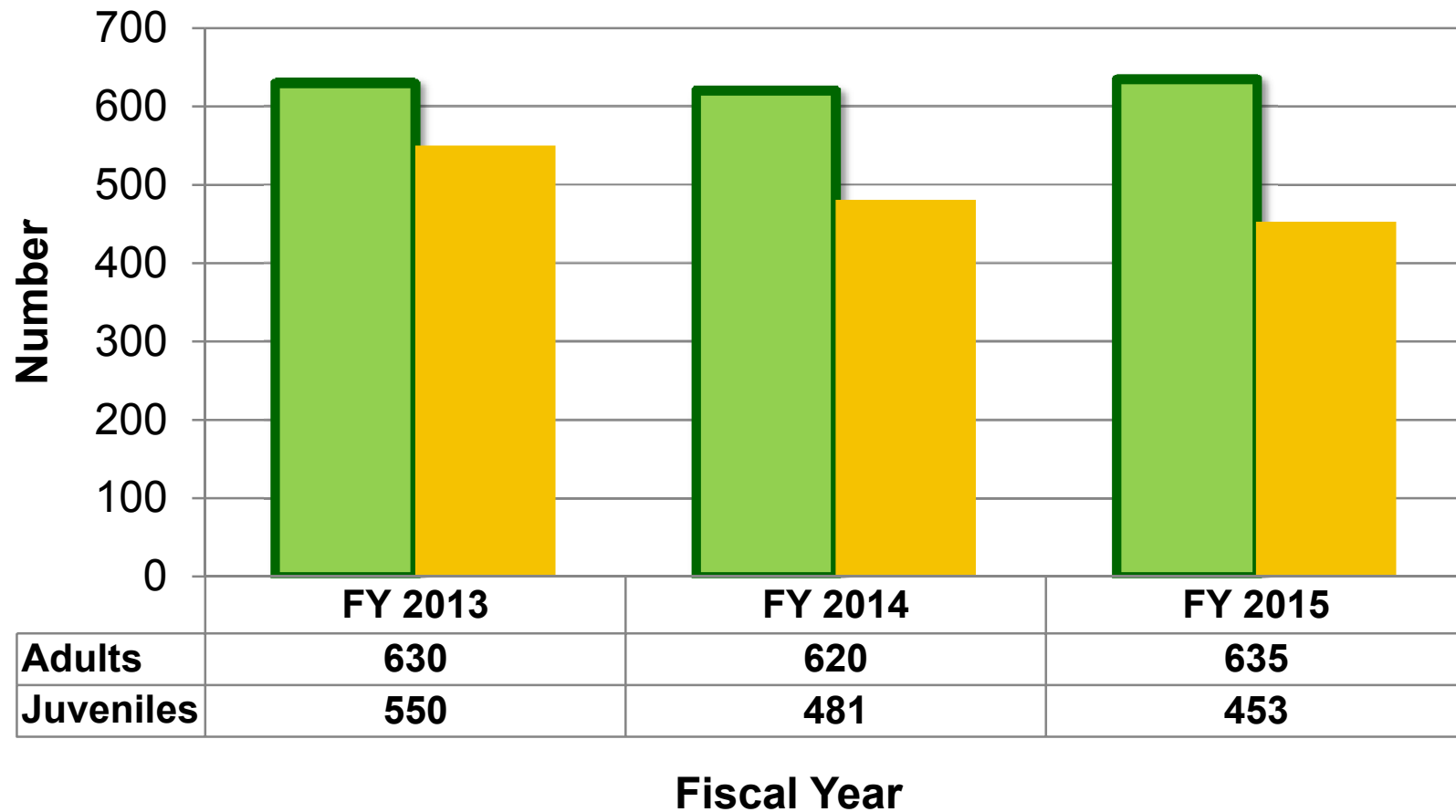
Average Daily Population of Juvenile Probation by Court Service Unit – FY 2015





BY THE NUMBERS

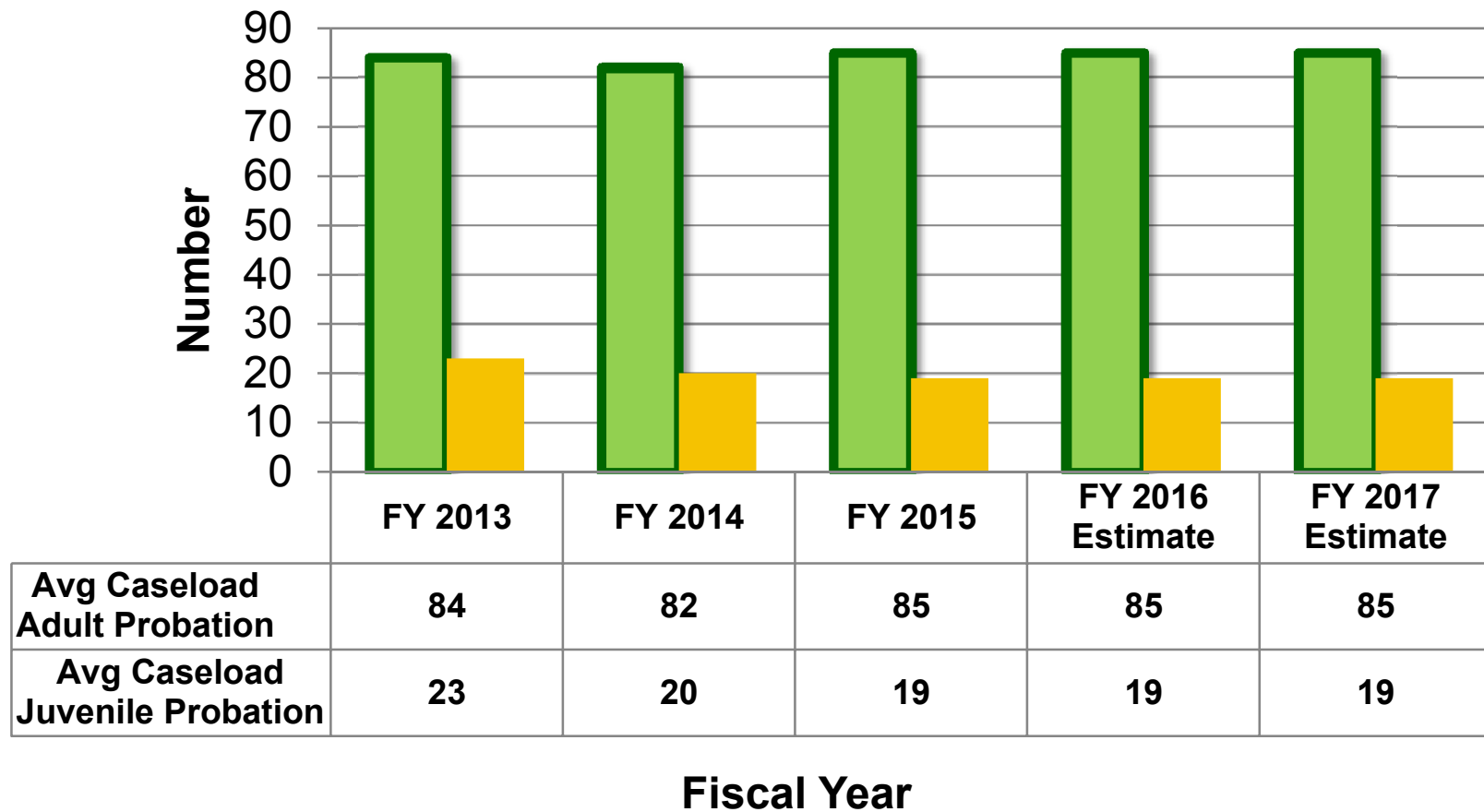
Average Monthly Population Under Probation Supervision





BY THE NUMBERS

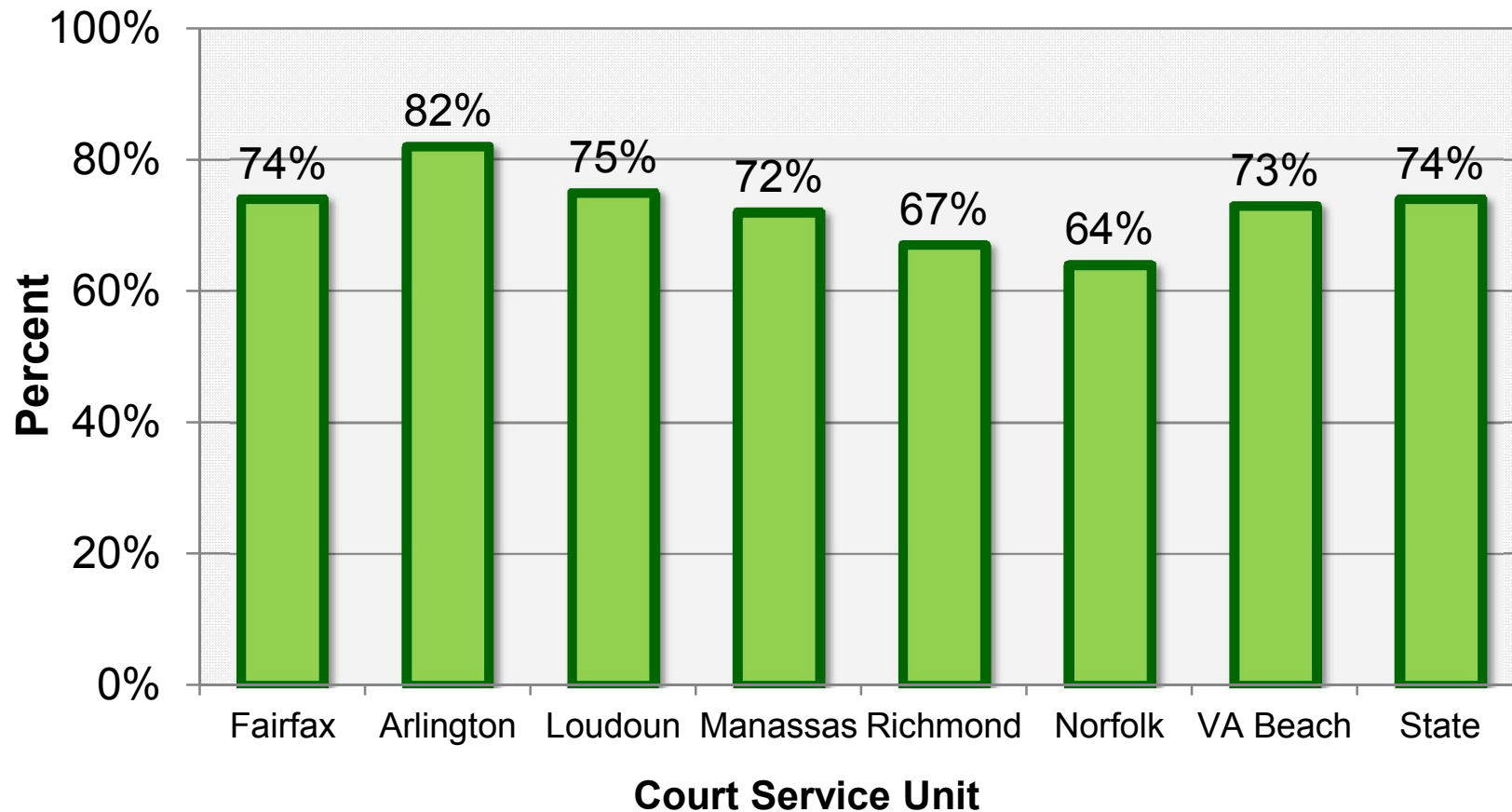
Average Monthly Caseload per Probation Officer





JURISDICTION COMPARISON

Juvenile 12-Month Non-Reconviction Rates by Court Service Unit – FY 2015





LINES OF BUSINESS SUMMARY

#186 – Intake & Intervention Services – Visitation and Exchange, Mediation and Diversion

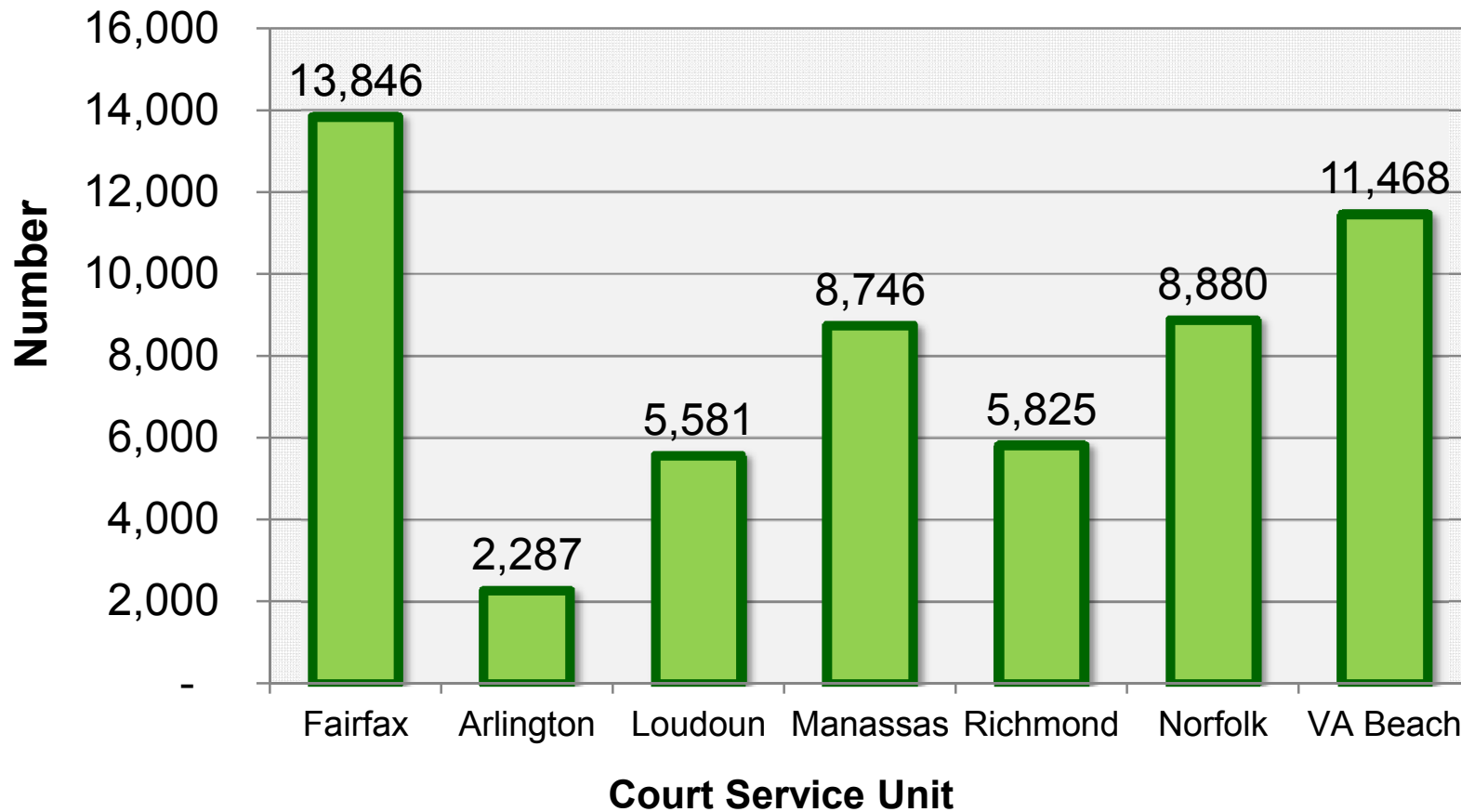
- **Intake Services** addresses complaints and requests to file civil and delinquency petitions for adults and juveniles
- **Diversion** removes non-violent, first time juvenile offenders from the formal court process
- **Domestic Relations** gathers client information to determine needs; prepares petitions and preliminary protective orders; conducts court-ordered investigations
- **Mediation Services** are provided for court-ordered and self-referred custody and visitation cases
- **Supervised Visitation and Exchange** programs serve clients who report domestic violence and/or stalking or who have been court-ordered





JURISDICTION COMPARISON

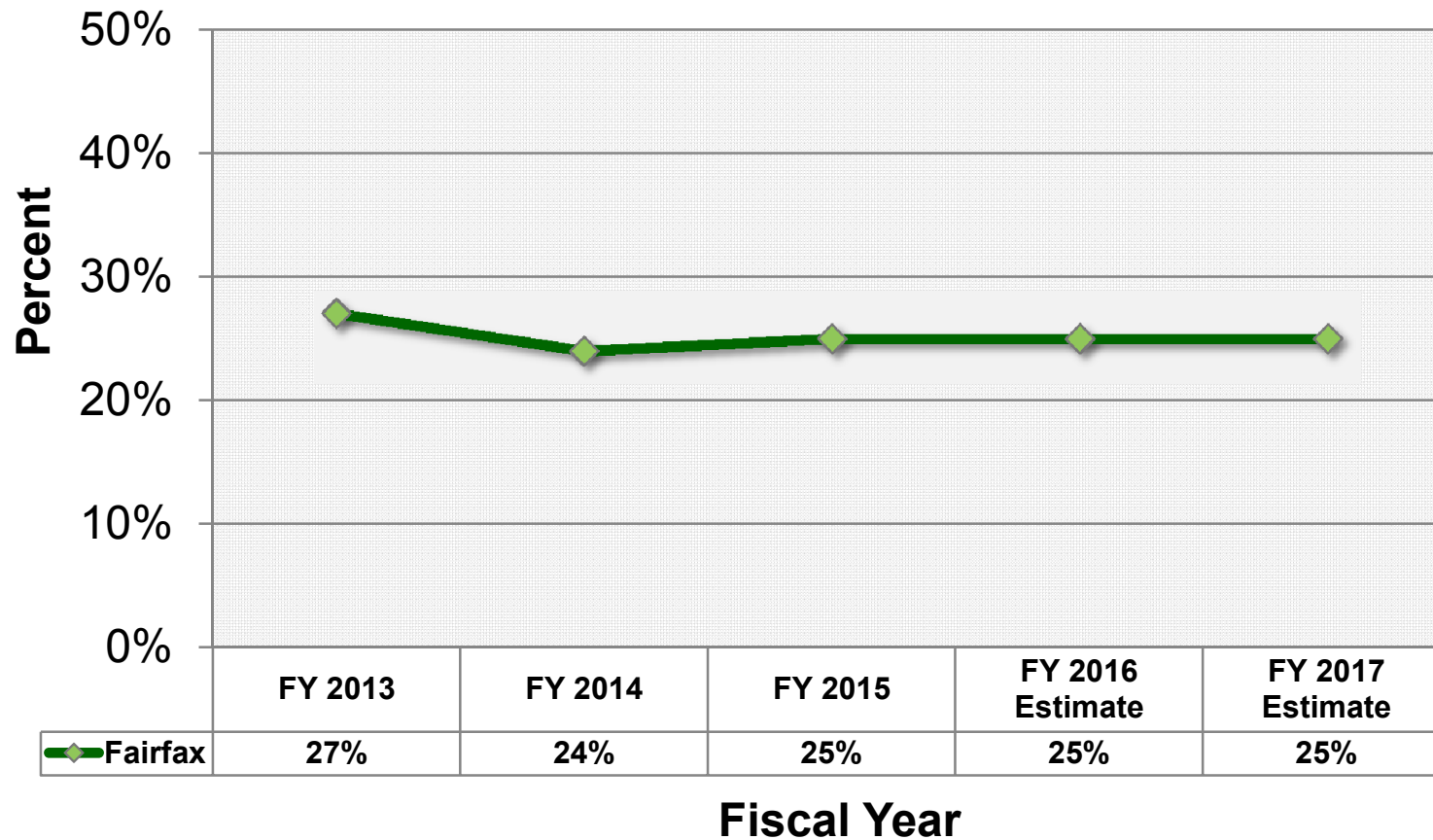
Total Intake Complaints by Court Service Unit – FY 2015





BY THE NUMBERS

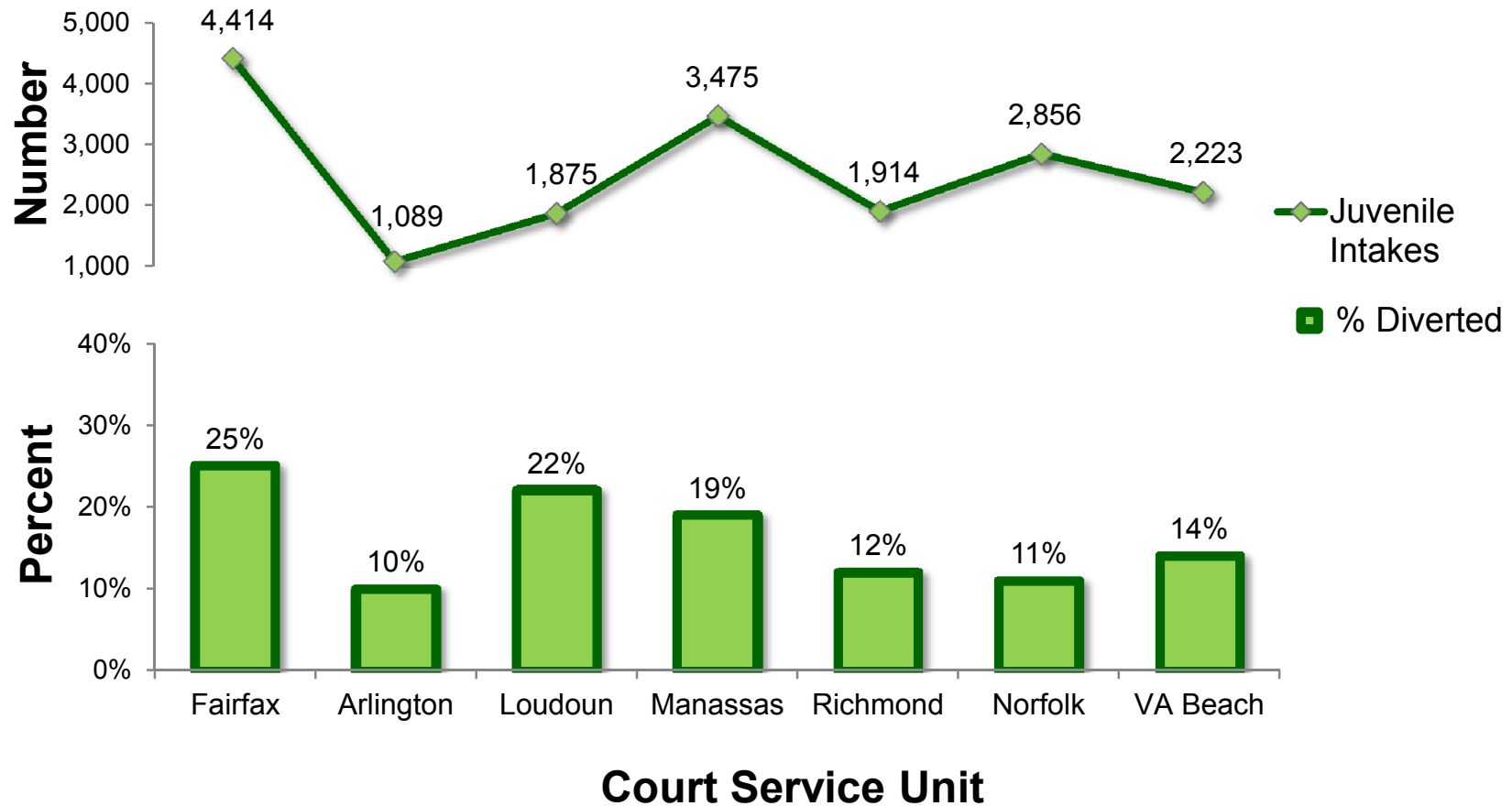
Percent of Youth Diverted from Formal Court Processing





JURISDICTION COMPARISON

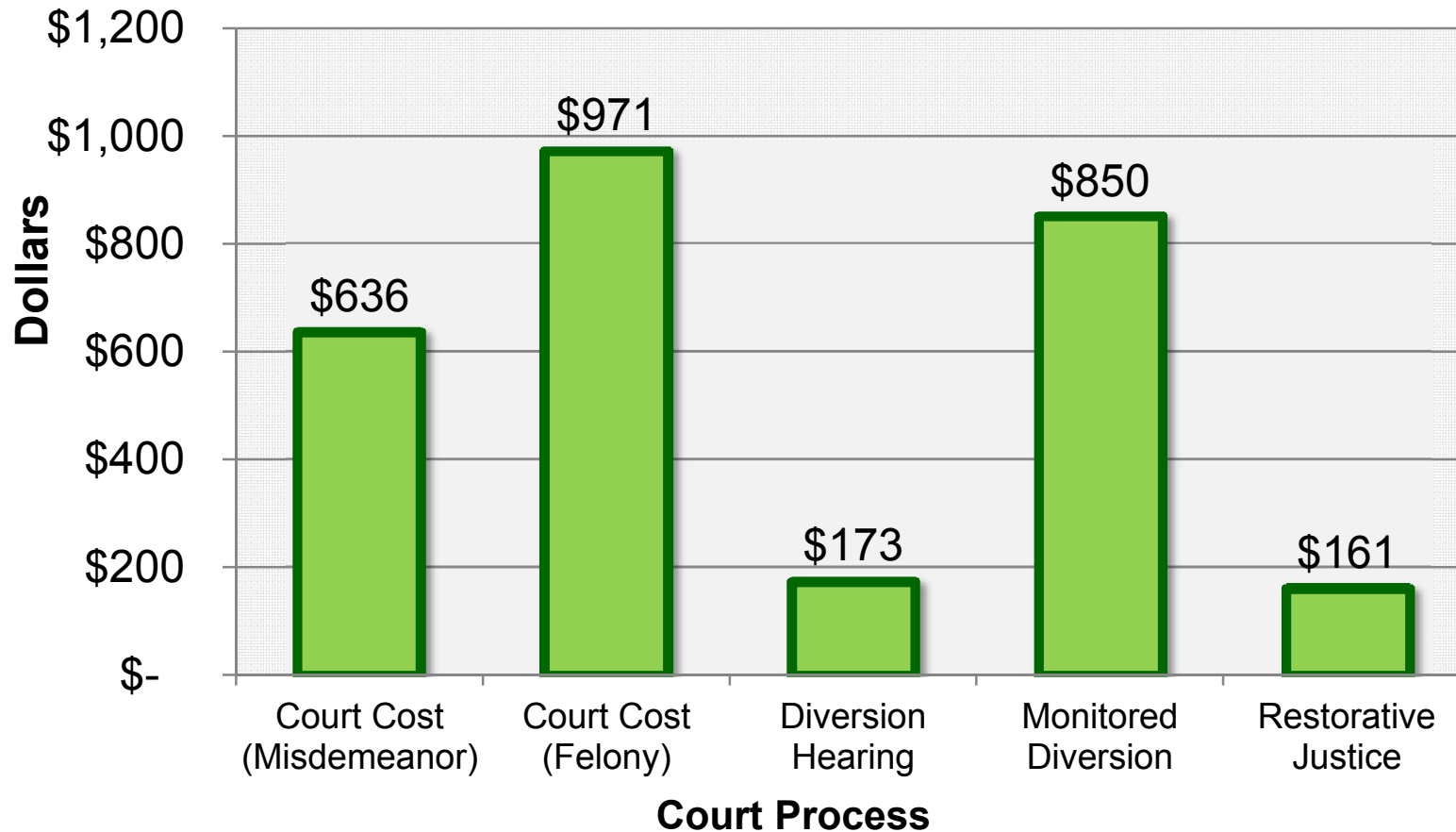
Percent Diverted of Total Juvenile Intake Complaints by Court Service Unit – FY 2015





COST COMPARISON

Average Cost of Diversion Alternatives Compared to Cost of Court Processing – FY 2015





LINEs OF BUSINESS SUMMARY

#187 – Juvenile Detention Center Services

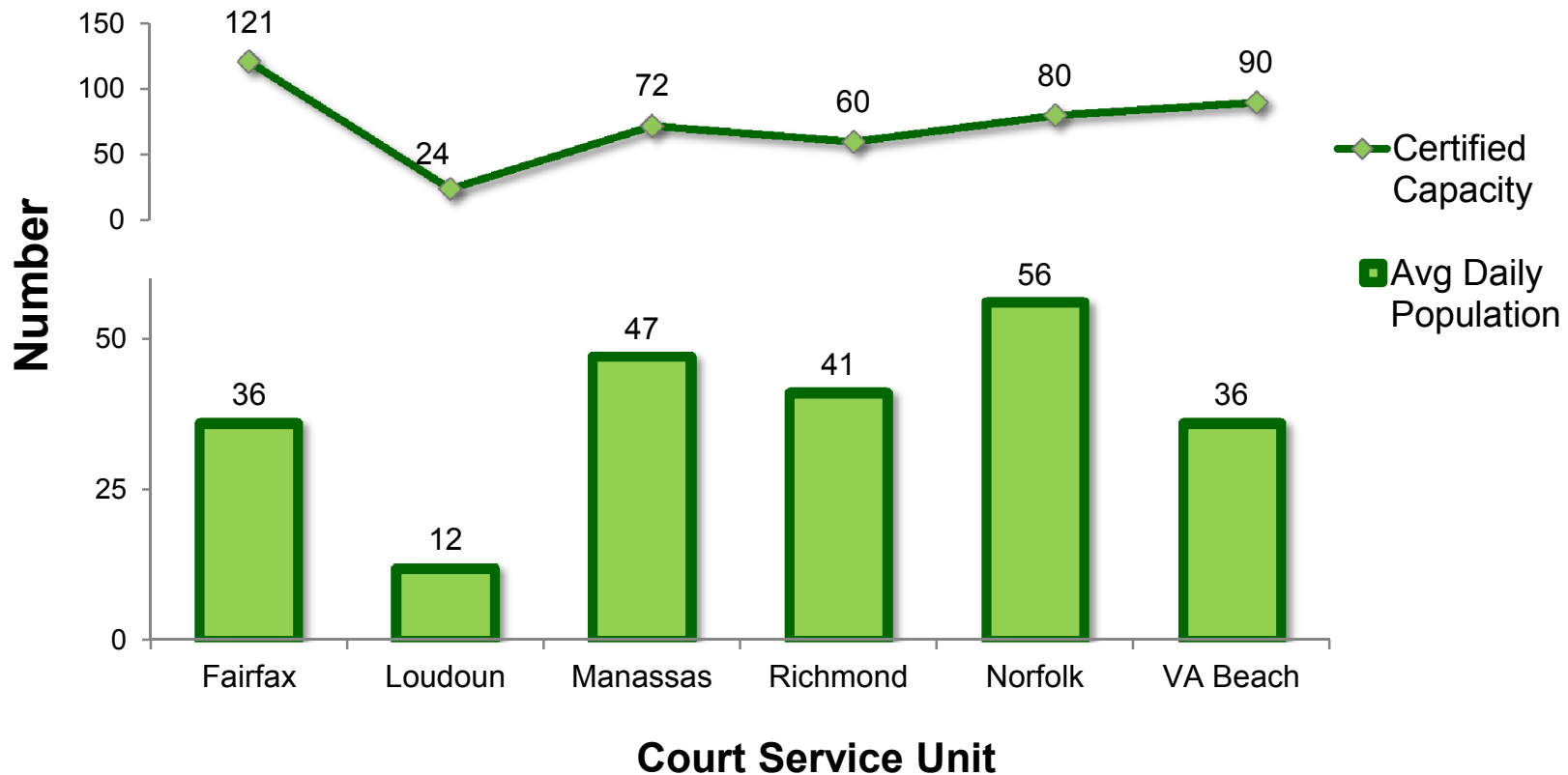
- **Juvenile Detention Center** provides a safe, secure, structured, residential setting for juvenile offenders who have been ordered to be detained by a judge, intake officer, or magistrate
- **Therapeutic Programming and Services** promotes positive behavioral change, overall well-being of facility residents, and community protection
 - Health Services
 - Education
 - BETA-Post Dispositional Program
 - Assessment
 - Screenings





JURISDICTION COMPARISON

Average Daily Population for Juvenile Detention Centers by Locality – FY 2015





LINEs OF BUSINESS SUMMARY

#188 – Shelter Care

- **Safe, Stable Environment** for youth awaiting court hearings addressing adjudication and disposition
- **Community-Based, Non-Secure, Temporary** co-ed residential program for court-ordered youth that focuses on stabilization
- **Least restrictive** secure detention alternative
 - Counseling
 - Mental Health Screening
 - Trauma Assessments
 - Education





LINEs OF BUSINESS SUMMARY

#189 – Supervised Release Services

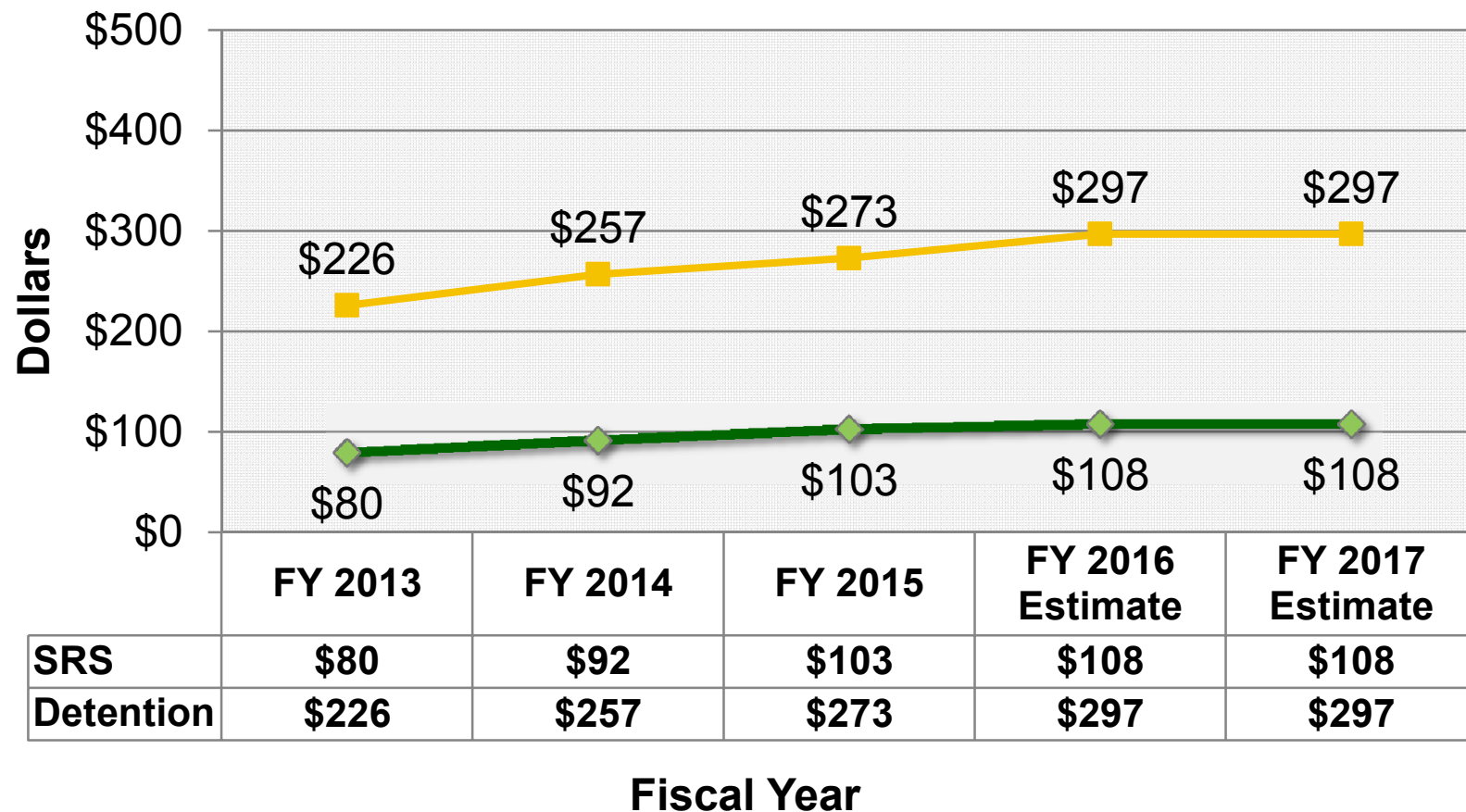
- **Detention Alternative** providing pre-adjudication and pre-disposition supervision to youths in their homes rather than youths being held in secure detention
- **Intensive Supervision** for high-risk juveniles who are on probation or parole
- **Gang Intervention and Prevention Coordination**
 - Partnership with Northern Virginia Family Services
 - Human Trafficking Education and Prevention





COST COMPARISON

Cost of Supervised Release Services (SRS) vs. Juvenile Detention Per Bed Day Rate



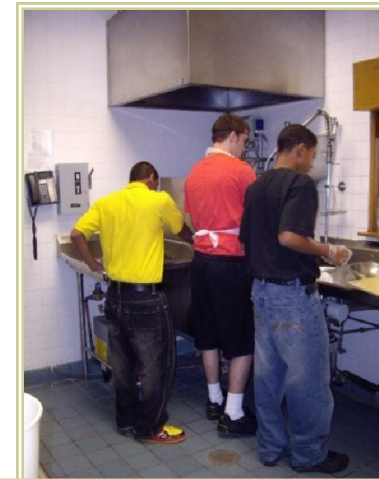


LINES OF BUSINESS SUMMARY

#190 – Long-Term Residential Care (LTRC)

- **Structured Residential, Community-Based Treatment** services for court involved male & female adolescents who have otherwise been unsuccessful with prior treatment interventions
- **Individual, Group and Family Counseling** services are provided by Foundations and Boys Probation House
- **Transitioning Youth into Adulthood** by providing continued education, job and life skills, and employment is the focus of the Transitional Living Program

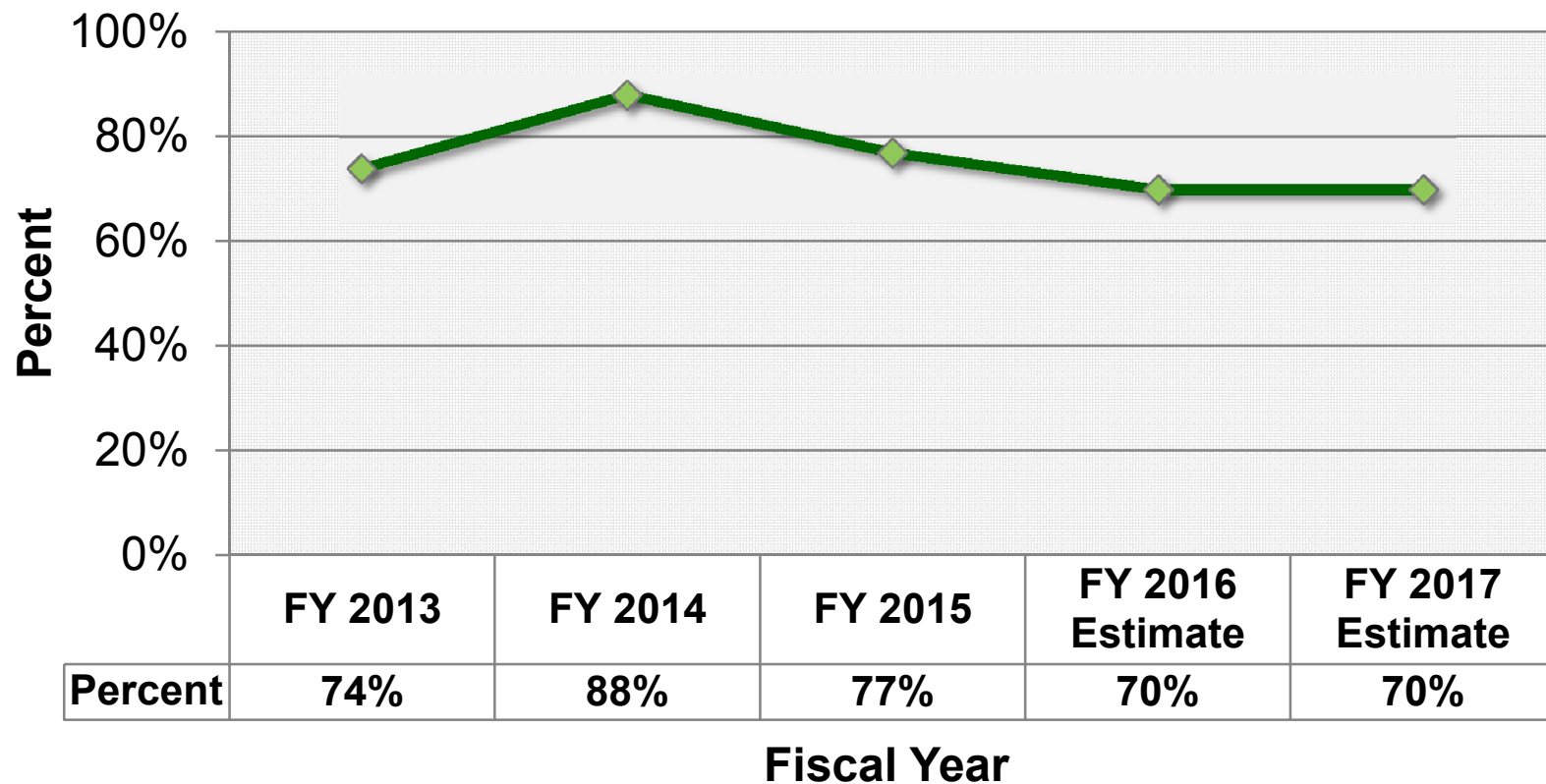
 - Boys Probation House
 - Foundations
 - Transitional Living Program





BY THE NUMBERS

Percent of Long Term Residential Care Discharged Youth with No New Delinquent Petitions for One Year





TRENDS AND CHALLENGES

- Changing Caseloads & Utilization Rates
- Mental Health Needs of Clients
- Delivery of Services to a Culturally Diverse Community
- Racial and Ethnic Disparities
- Transportation
- Impact of Future National, State and Local Policy Changes
- Increasing Training Needs and Expenses
- Increasing Emphasis on Prevention and Early Intervention



LOOKING FORWARD

- Changes in Workforce
 - Retirements & succession planning
 - Realignment of current resources
- Changes in Community Demographics
- Changes in Community Needs
- Impact of VA Department of Juvenile Justice Transformation Efforts
- Utilization/Regionalization of Residential Programs
- National Juvenile Justice Agenda



AGENCY FOCUS

- Cognitive Behavioral Interventions
- Diversion & Alternative Accountability Programs
- Evidence-Based Practice
- Family Engagement
- Gender Specific Services
- Racial and Ethnic Disparities
- Results-Based Accountability
- Trauma Informed Care
- Technology Advancements
- Staff Development & Training



DISCUSSION

