

Fairfax County, Virginia



LINES OF BUSINESS

February 2016

POLICE DEPARTMENT

*County Lines of Business (LOBs)
Presentation to the Board of Supervisors*



www.fairfaxcounty.gov/budget/2016-lines-of-business.htm



OUTLINE OF TODAY'S PRESENTATION

1. Department Overview
2. High level view of Lines of Business (LOBS)
3. How LOBs relate to the County Vision Elements
4. Metrics
5. Community Engagement
6. Trends and Challenges
7. Looking Forward
8. Discussion

*Note: See **www.fairfaxcounty.gov/budget/2016-lines-of-business.htm** to access all LOBs documents and presentations.*



DEPARTMENT OVERVIEW

FCPD VISION STATEMENT:

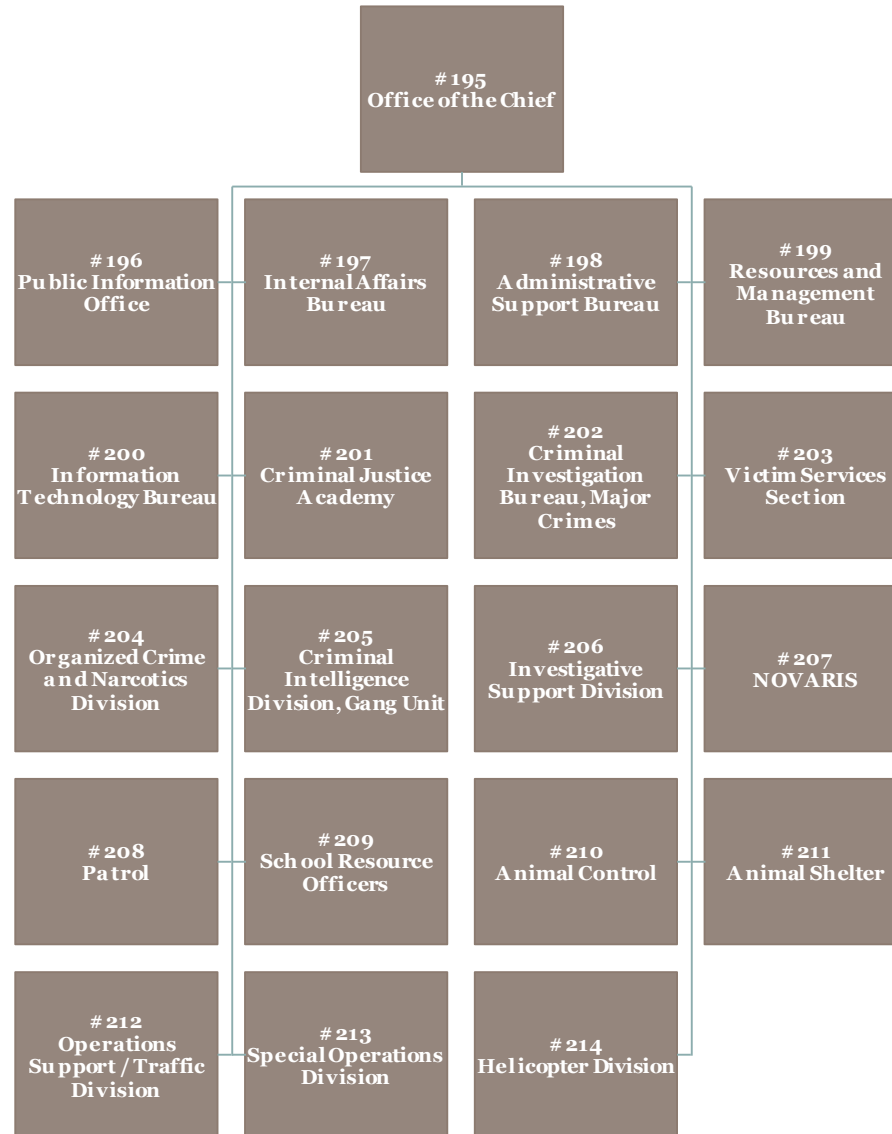
Ethical Leadership through Engagement with the Community to:

- Prevent & Fight Crime (**Mission**)
- Provide a Culture of Safety at work and in the Community which Preserves the Sanctity of Human Life
- Keep Pace with Urbanization

With a labor force in excess of 2,000 comprised of sworn Police Officers, Animal Control Officers, civilian employees, Auxiliary Police Officers and several hundred certified volunteers; the Fairfax County Police Department engages with a community of 1.1 million residents according to 2015 population estimates. Community engagement maintains the reputation of Fairfax County being the safest major jurisdiction in the United States. The FCPD is one of many County stakeholders who all make daily contributions which makes Fairfax County a great place to Live, Work, Play, & Grow Old.



FCCPD HIGH LEVEL VIEW – 20 LOBS





DEPARTMENT RESOURCES

Category	FY 2014 Actual	FY 2015 Actual	FY 2016 Adopted
FUNDING			
<u>Expenditures:</u>			
Compensation	\$147,758,976	\$151,068,626	\$156,887,430
Operating Expenses	24,619,273	27,623,652	24,602,239
Work Performed for Others	(725,421)	(746,827)	(697,406)
Capital Equipment	142,769	776,225	0
Total Expenditures	\$171,795,597	\$178,721,676	\$180,792,263
General Fund Revenue	\$30,742,228	\$32,997,509	\$30,973,859
Net Cost/(Savings) to General Fund	\$141,053,369	\$145,724,167	\$149,818,404
POSITIONS			
Authorized Positions/Full-Time Equivalents (FTEs)			
<u>Positions:</u>			
Regular	1718 / 1718	1720 / 1720	1722 / 1722
Total Positions	1718 / 1718	1720 / 1720	1722 / 1722



CONNECTION TO COUNTY VISION

Maintaining Safe & Caring Communities/Connecting People & Places / Creating a Culture of Engagement:

- High Level Overview of Engagement with communities:
 - Since July 1, 1940 – Community Policing key driver
 - Neighborhood Watch – National Night Out
 - Citizen Advisory Council
 - Chief's Council on Diversity Recruitment
 - Communities of Trust Committee
 - Crime Solvers Program
 - Victim Services Section
 - Citizens Police Academy
 - Volunteers In Police Service Program
 - Police Explorer Posts (3) – Culmore, Alexandria, Western Fairfax
 - Partnerships with County Schools Criminal Justice Programs
 - Virginia Special Olympics
 - COG committees
 - End Homelessness advocates
 - Juvenile Justice – Jail Diversion Project
 - Planning & Research Bureau Outreach coordinators
 - Social Media footprint
 - Ad Hoc Police Practices Review Commission
 - Animal Shelter Volunteer programs – robust national leader
 - Community Stakeholders/Advocates across many disciplines to accomplish mission (Domestic Violence, Diversion First, Human Trafficking, Heroin, Suicide, etc.)



CONNECTION TO COUNTY VISION

Building Livable Spaces & Practicing Environmental Stewardship:

- **Work with County agencies on all CIP items to blend facilities into the character of the community as the following examples illustrate:**
 - McLean Station
 - Fair Oaks
 - Sully
 - Reston
 - New Public Safety Headquarters
 - Animal Shelter
 - Future projects including new South County facility to provide Police and Animal Services

Through the agency's Wildlife Biologist, FCPD partners with many agencies to provide direct service in support of County stewardship of the environment.



CONNECTION TO COUNTY VISION

Exercising Corporate Stewardship

- State & National Accreditation
- PERF Use of Force Review
- GMU community survey 2015
- Ad Hoc Police Practices Review Commission
- Chief's web page links to data, reports, and accountability information
- Re-organization of Public Information Office to Public Affairs Bureau to increase transparency and accountability
- Internal Affairs Bureau annual data made public
- Officer Involved Shooting database on web 2005 - present
- Annual Report
- Social Media
- Consistent superior management of budget and all resources



10 YEAR EXPENDITURE SUMMARY

	FY 2007 Adopted Budget Plan	FY 2008 Adopted Budget Plan	FY 2009 Adopted Budget Plan	FY 2010 Adopted Budget Plan	FY 2011 Adopted Budget Plan	FY 2012 Adopted Budget Plan	FY 2013 Adopted Budget Plan	FY 2014 Adopted Budget Plan	FY 2015 Adopted Budget Plan	FY 2016 Adopted Budget Plan
Expenditures:										
Personnel Services	\$134,633,032	\$142,379,818	\$148,675,826	\$145,284,817	\$136,953,611	\$136,053,611	\$146,427,513	\$150,365,684	\$154,276,752	\$156,887,430
Operating Expenses	27,965,774	27,431,544	29,406,837	26,288,563	25,257,642	25,257,642	25,557,561	25,660,405	25,910,405	24,602,239
Capital Equipment	801,215	329,105	130,575	130,575	0	0	0	229,968	0	0
Subtotal	163,399,991	170,140,467	178,213,217	171,703,955	162,211,253	161,311,253	171,985,074	176,247,067	180,187,157	181,489,669
Less:										
Recovered Costs	(974,986)	(925,188)	(937,333)	(778,406)	(697,406)	(697,406)	(697,406)	(697,406)	(697,406)	(697,406)
Total Expenditures	\$162,425,005	\$169,214,279	\$177,275,884	\$170,925,549	\$161,513,847	\$160,613,847	\$171,297,668	\$175,549,661	\$179,489,751	\$180,792,263



LOBS SUMMARY TABLE

LOB #	LOB Title	FY 2016 Adopted	
		Disbursements	Positions
195	Office of the Chief	\$3,239,348	22
196	Public Information Office	731,933	9
197	Internal Affairs Bureau	1,636,498	17
198	Administrative Support Bureau	18,280,051	52
199	Resources and Management Bureau	4,985,458	49
200	Information Technology Bureau	4,873,880	18
201	Criminal Justice Academy	8,437,340	38
202	Criminal Investigation Bureau, Major Crimes	9,952,619	101
203	Victim Services Section	576,669	5
204	Organized Crime and Narcotics Division	4,753,893	43
205	Criminal Intelligence Division, Gang Unit	2,917,194	33
206	Investigative Support Division	2,553,412	20
207	NOVARIS	634,516	7
208	Patrol	92,395,325	1062
209	School Resource Officers	4,834,662	55
210	Animal Control	3,308,170	34
211	Animal Shelter	1,736,347	32
212	Operations Support / Traffic Division	6,848,726	70
213	Special Operations Division	4,887,455	34
214	Helicopter Division	3,208,767	21
Total		\$180,792,263	1722



LOB 208 PATROL

Category	FY 2014 Actual	FY 2015 Actual	FY 2016 Adopted
LOB #208: Patrol			
FUNDING			
<u>Expenditures:</u>			
Compensation	\$89,538,619	\$87,940,808	\$92,167,948
Operating Expenses	360,181	337,801	372,406
Work Performed for Others	(173,044)	(194,450)	(145,029)
Capital Equipment	0	136,806	0
Total Expenditures	<u>\$89,725,756</u>	<u>\$88,220,965</u>	<u>\$92,395,325</u>
General Fund Revenue	\$283,017	\$167,414	\$0
Net Cost/(Savings) to General Fund	\$89,442,739	\$88,053,551	\$92,395,325
POSITIONS			
Authorized Positions/Full-Time Equivalents (FTEs)			
<u>Positions:</u>			
Regular	1084 / 1084	1059 / 1059	1062 / 1062
Total Positions	<u>1084 / 1084</u>	<u>1059 / 1059</u>	<u>1062 / 1062</u>

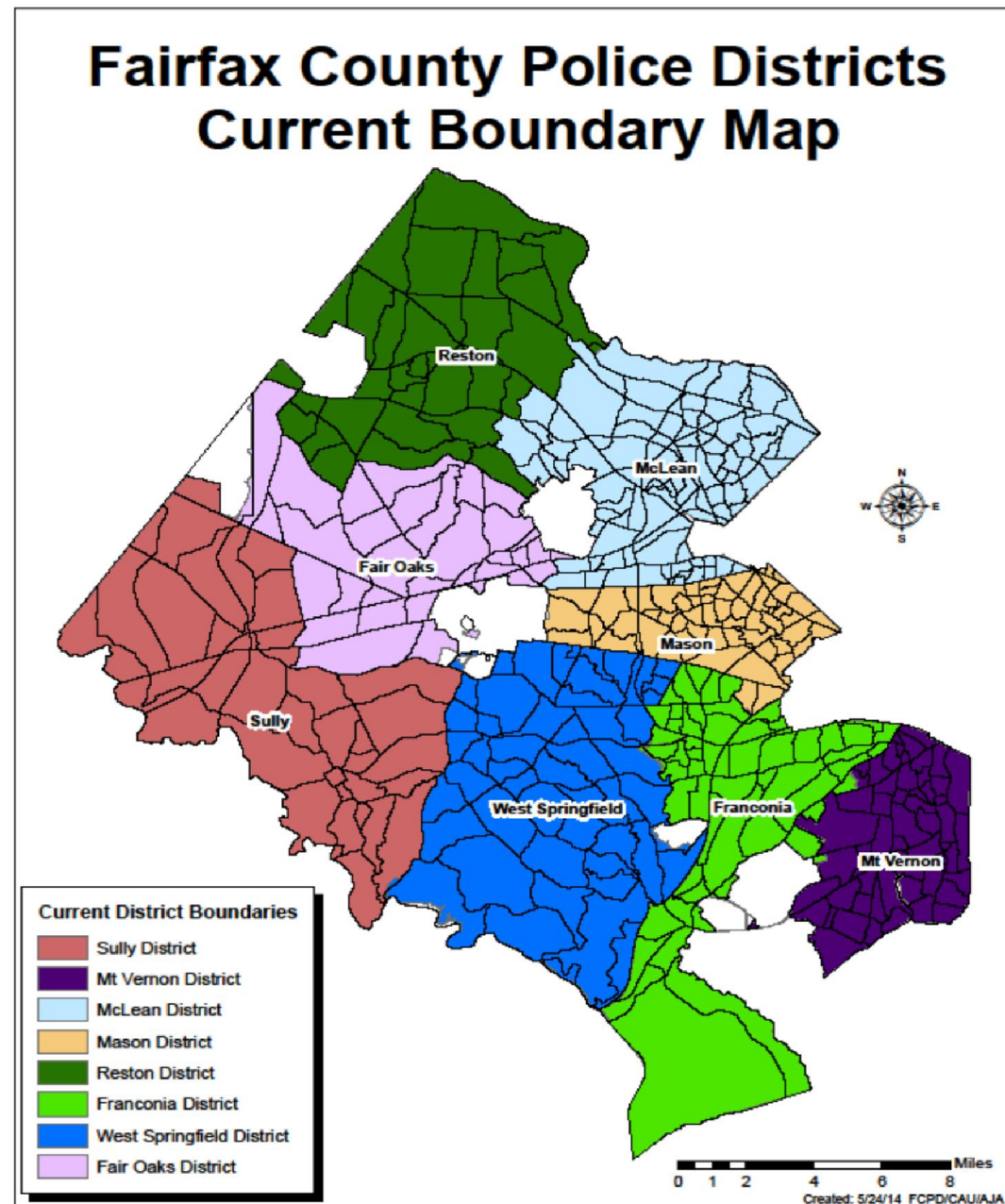


CALL TO ARRIVAL RESPONSE TIME METRICS

	Avg Priority 1	Avg Priority 2
YEAR	Response Time	Response Time
2013	5.10 minutes	7.25 minutes
2014	6.63 minutes	7.25 minutes
2015	4.76 minutes	7.41 minutes

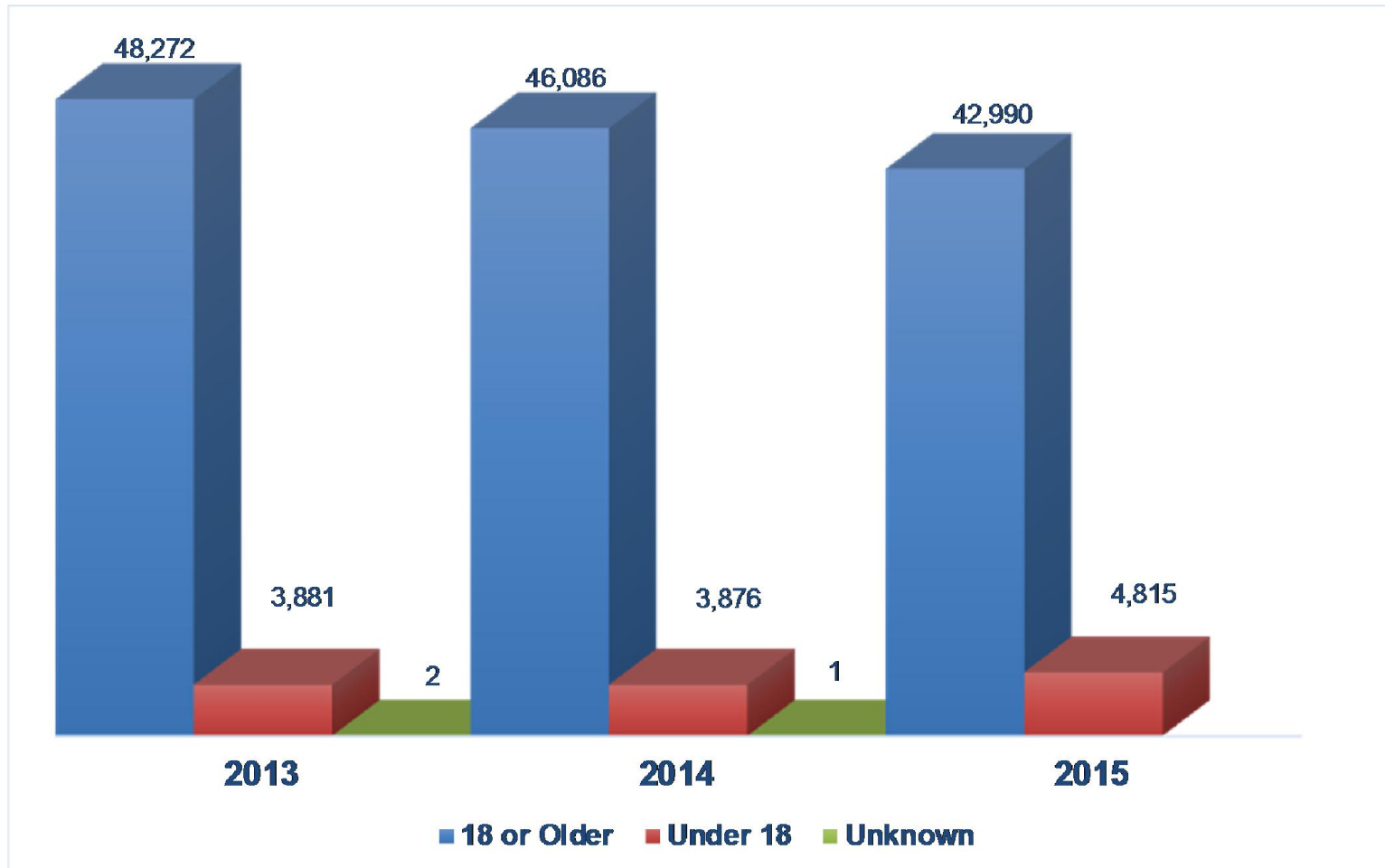
Priority 1: A life threatening event is occurring or has occurred.

Priority 2: Event of serious threat to property, public order, or the possibility of escalating to a life threatening event exists.



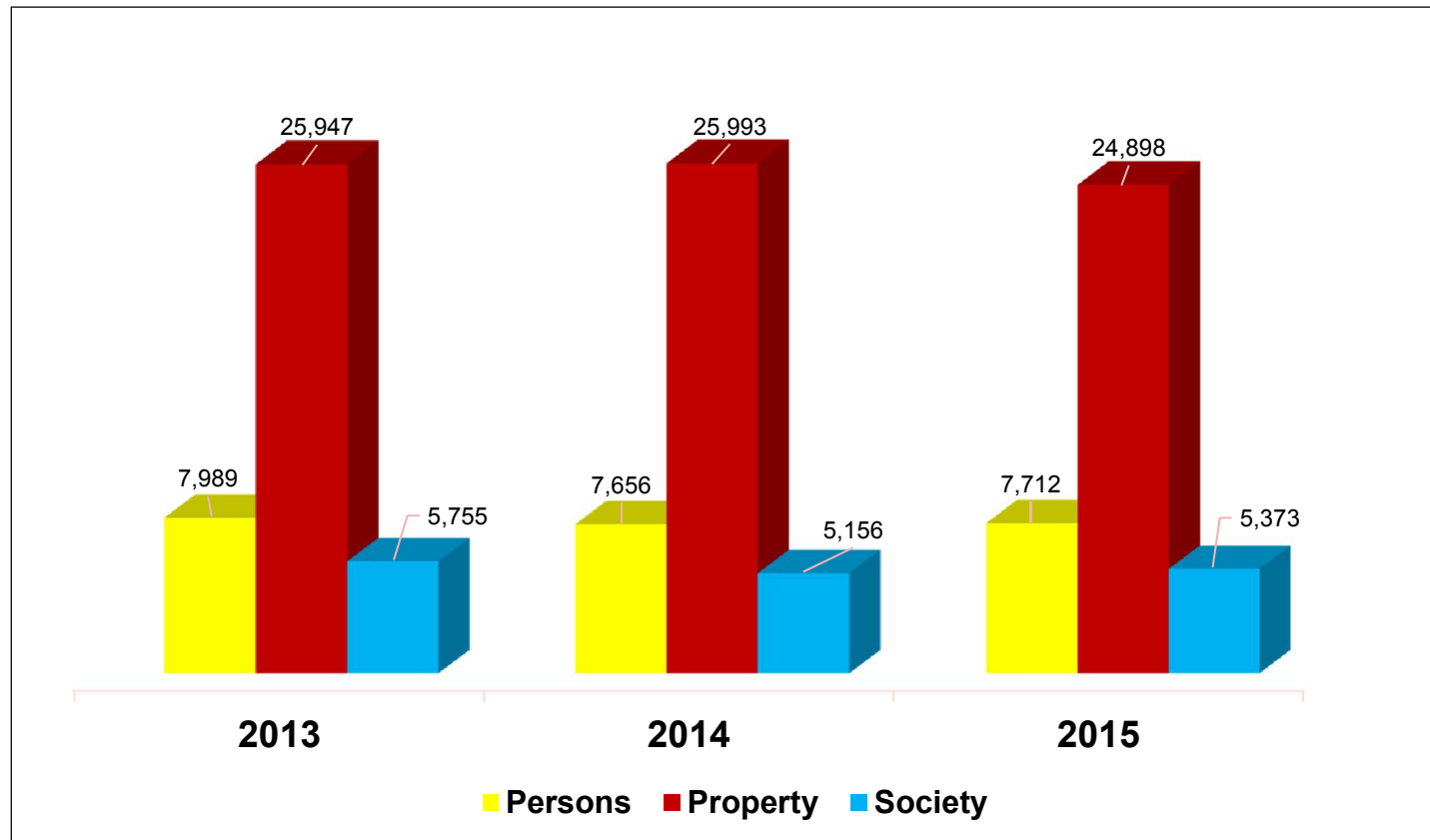


ARREST METRICS (EXCLUDING DUI ARRESTS)





ANNUAL CRIME METRICS





CALLS FOR SERVICE METRICS





SERIOUS CRIME CASE WORKLOAD AND HOMICIDE CASE CLOSURES METRICS

Squads	2013	2014	2015
Auto Theft	736	594	614
Child Abuse	313	393	347
Child Exploitation	1675	1407	1267
Financial Crimes*	1028	1224	991
Financial Crimes Investigators**	1626	1834	2113
Homicide***	400	398	406
Robbery	199	187	232
Sex Crimes	250	226	297
Notes:			
* Cases assigned to detectives only			
** Reports written, not necessarily assigned for further investigation			
*** Includes natural/suspicious deaths			



MURDER CASE METRICS

CY 2013

- **8 cases – 8 victims**
- **100% closed**
- **6 cases were domestic related**

CY 2014

- **10 cases - 10 victims**
- **70% closed – 1 arrest warrant on file**
- **1 case was domestic related**

CY 2015

- **13 cases – 13 victims**
- **69% closed – 1 arrest warrant on file**
- **1 case was domestic related**
- **July 1, 2015 LAP launched**

All unsolved cases remain active



CRIME METRICS

CY's 2013 & 2014

Murders in 2015 = 13

NOTE: CY 2015 Metrics in Validation Process

FAIRFAX COUNTY P.D.

		2013		2014		INC/DEC		% CHANGE
HOMICIDE		8		10		2		25%
RAPE		88		76		(12)		-14%
ROBBERY		411		399		(12)		-3%
AGGRAVATED ASSAULT		414		405		(9)		-2%
BURGLARY		1,070		912		(158)		-15%
LARCENY		13,676		13,168		(508)		-4%
MOTOR VEHICLE THEFTS		757		733		(24)		-3%
Total Part 1		16,424		15,703		(721)		-4%



CY 2014 SELECTED CRIME METRICS – COMPARISON TO REGION

Fairfax County reported **13,168** Larceny Offenses in 2014

- **12,949** Larceny Offenses in Montgomery County
- **12,599** Larceny Offenses in Prince George's County
- **25,881** Larceny Offenses in Metro D.C.P.D.

Larceny Arrests:

Fairfax County:	4,800
Metropolitan Police Department:	2,217
Montgomery County:	2,766
Prince George's County:	1,577

HOMICIDE CY 2014

Fairfax	10
Montgomery Co.	19
Prince George's	39
D.C.	105



VICTIM SERVICES SECTION METRICS

The decentralized staff of 10 specialists and the Director assists victims and survivors of violent crime across the county, providing crisis intervention, counseling referrals, transportation, housing assistance, safety planning and more at all eight district police stations.

In 2015, the Victim Services Section:

Served **3,336** victims and survivors.
Championed the Purple Ribbon Magnet Project for Domestic Violence Awareness Month in January.
Hosted the third annual National Crime Victims' Rights Week 5K Walk and Candlelight Tribute.

Hosted ninth annual K-9 Krawl dog walk to raise awareness of domestic violence and animal cruelty connection.
Continued partnering with animal shelter to expand "Pet Haven" program to provide care and shelter to pets from domestic violence situations.





HEROIN OVERDOSE METRICS

The Police Department continues to meet with approximately 50 stakeholders from across a variety of disciplines and county, state, and federal agencies to combat the heroin epidemic regionally.

Verified cases reported in Fairfax County CY 2013 – 2015

Jurisdiction	Year	Overdoses	Fatal	Fatal %
Fairfax County	2013	41	9	22.0
Fairfax County	2014	75	17	22.7
Fairfax County	2015	110	32	29.1

Fire & Rescue is primary first responder with life saving equipment and has proven response times to medical calls for service. State Medical Director recently approved training for officers and we will test & evaluate training officers.



INTERNAL AFFAIRS METRICS

2014	2015
<ul style="list-style-type: none">• 574 cases investigated	<ul style="list-style-type: none">• 587 cases investigated
<ul style="list-style-type: none">• 114 originated from citizen(s)	<ul style="list-style-type: none">• 110 originated from citizen(s)
<ul style="list-style-type: none">• 460 originated internally	<ul style="list-style-type: none">• 477 originated internally
<ul style="list-style-type: none">• 273 police vehicle related	<ul style="list-style-type: none">• 295 police vehicle related
<ul style="list-style-type: none">• 312 cases closed	<ul style="list-style-type: none">• 302 cases closed
<ul style="list-style-type: none">• 132 sustained allegations	<ul style="list-style-type: none">• 101 sustained allegations
<ul style="list-style-type: none">• 650 FOIA requests	<ul style="list-style-type: none">• 479 FOIA requests
<ul style="list-style-type: none">• 943 subpoena request	<ul style="list-style-type: none">• 792 subpoena requests



TRAFFIC DIVISION METRICS

FATAL CRASHES	2013	2014	2015
Crashes	26	23	22
Fatalities	29	25	23
Victims Under 21	3	5	2
Pedestrian Victims	5	9	11
Unrestrained Victims	9	6	6
Driver Killed	5	3	4
Passenger Killed	4	3	2



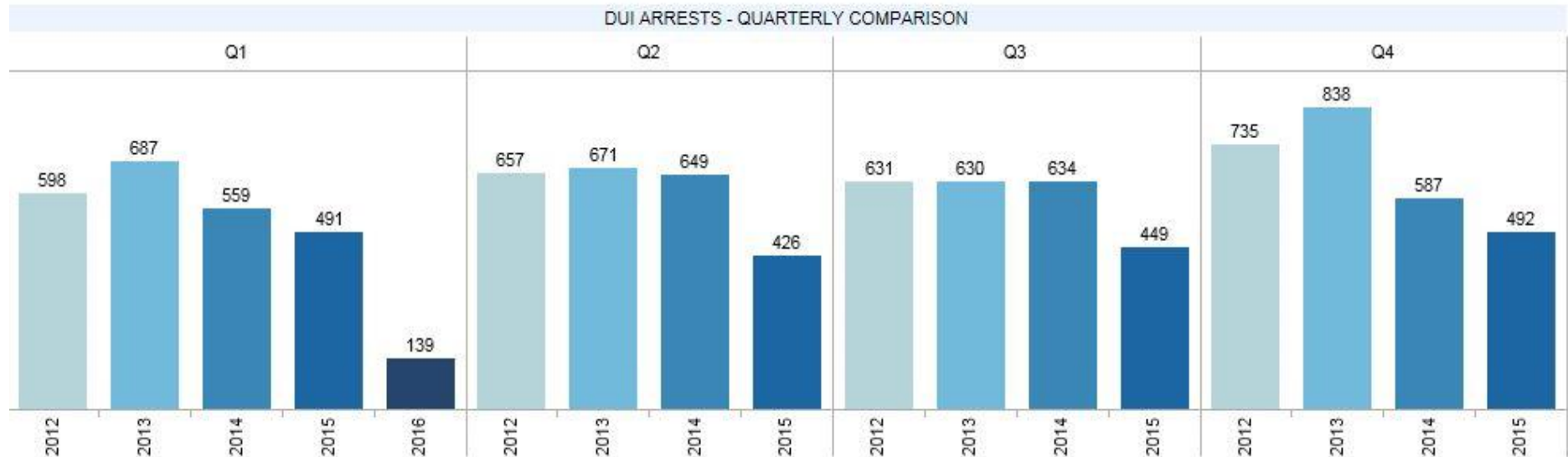


DUI TRAFFIC METRICS

DRIVING UNDER THE INFLUENCE (DUI) ARRESTS

DRIVING UNDER THE INFLUENCE - COUNTYWIDE ARRESTS

Current Year Numbers are YTD





ANIMAL SERVICES METRICS

Animal Control

- Responded to 13,207 calls for service
- Conducted 853 humane investigations
- Responded to 3,159 wildlife calls
- Took reports of 1,709 animal bites

Wildlife Biologist

- Deer management
- Geese management
- Wildlife diseases



	Doe	BB	Buck	Total
Archery	646	98	172	916
Managed Hunt	42	4	36	82
Sharpshooting	26	26	18	70
4-Poster sharpshooting	10	0	3	13
*Misc. Deer	0	0	1	1
White Buffalo	13	3	24	40
To Date Total	737	131	254	1122





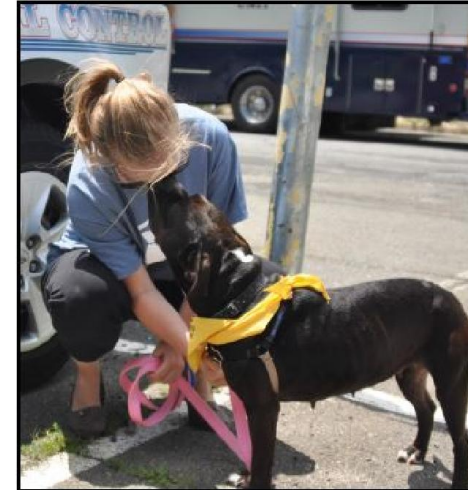
ANIMAL SERVICES METRICS

Animal Shelter

Civilian personnel maintain and operate the only Fairfax County animal facility and work closely with Animal Control officers to care for lost, abandoned, abused or unwanted animals. Each year the shelter takes in more than 5,500 companion animals and an estimated 2,000 or more wildlife pass through its doors.

2014 was a banner year for the Shelter:

- Over 1,000 dogs adopted, setting new record.
- Adoptions topped 2,000 animals.
- Shelter received the Virginia Federation of Humane Societies' Compassion Award for efforts to reduce unnecessary euthanasia.
- The Humane Society of the United States recognized the shelter as one of the top 1 percent of shelters in the country.





ANIMAL SHELTER METRICS

CY's 2013, 2014 & 2015

	INTAKE		LIVE OUTCOME			LIVE RELEASE
	ANIMALS ON		RATE USING		OWNER	RATE USING
	HAND	LIVE	RAW	TOTAL	REQUESTED	ASILOMAR
YEAR	DECEMBER 31	OUTCOMES	NUMBERS	EUTHANASIA	EUTHANASIA	NUMBERS
2013	4105	3312	81 Percent	749	417	90 Percent
2014	4584	3921	86 Percent	607	470	95 Percent
2015	4802	3227	90 Percent	436	254*	96 Percent
*	Drop likely due to change in determining intake type					

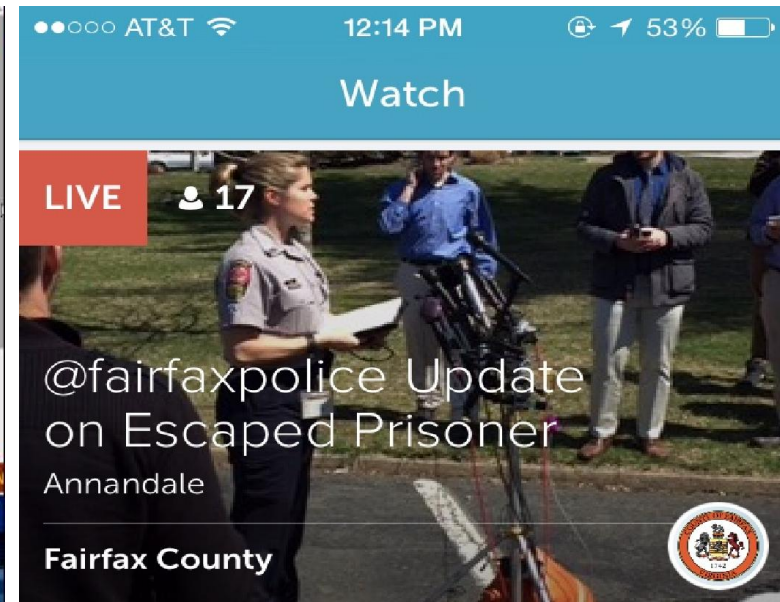


SOCIAL MEDIA AND WEB OUTREACH METRICS

Case Example of SM Footprint

March 31, 2015, high profile prisoner escape from Fairfax Hospital.

Twitter impressions totaled **1.8 million** from 5 a.m. to 1 p.m.





SOCIAL MEDIA OUTREACH AND METRICS

January 21, 2016, Example

PFC Chris Mamalis intervenes when child falls through ice; suffering from exposure.



Fairfax County Police Department

January 21 at 1:54pm · 🌐

This afternoon while on his way to work at the Mount Vernon District police station, PFC Chris Mamalis, saw a group of neighborhood children who appeared to be dragging another child. The children, recognizing PFC Mamalis as one of their neighbors and a police officer, flagged him down. PFC Mamalis learned that the 9-year-old boy had fallen through the ice at a nearby creek and his clothing was totally wet and beginning to freeze. The child was nearly unconscious and unresponsive. Recognizing the child was likely suffering from exposure, PFC Mamalis placed the child in his vehicle, removed the child's outer, wet clothing and put some of his own dry clothes on the child. He turned up the heat in his vehicle and called for rescue. Rescue responded and transported the child to Inova Fairfax Hospital, where he is being treated for non-life-threatening injuries. Once rescue cleared PFC Mamalis reported for duty.



Within 6 hours of Facebook post

- 25,000 likes
- Reach exceeding 755,000



By January 27, 2016

- 51,000 likes
- Reach exceeding 2.2 million
- Shares 7,763



SOCIAL MEDIA METRICS FOR 2015

YouTube - **423,357** views

FCPD NewsBlog - **1,549,282** views

Twitter September – December 2015

- **1,600** posts; **52,000** followers; quoted **265** times; **5,300** retweets; and **4,800** likes
- By late January of 2016 - **55,428** followers

Facebook 2015

- **3,352** new page likes; **2.5 million** reached; and **403,000** engagements
- Currently there are **32,665** people who like/follow FCPD's page



DIVERSITY OF APPOINTMENT METRICS

FAIRFAX COUNTY CRIMINAL JUSTICE ACADEMY IN 2015

Academy Session 64

Row Labels	Percentage
B/F	5%
B/M	8%
H/F	3%
H/M	5%
P/F	3%
P/M	5%
W/F	8%
W/M	62%

Not W/M 38%

Academy Session 65

Row Labels	Percentage
B/F	3%
B/M	9%
H/F	0%
H/M	9%
P/F	3%
P/M	0%
W/F	16%
W/M	59%

Not W/M 41%

Academy Session 66

Row Labels	Percentage
B/F	5%
B/M	7%
H/F	2%
H/M	7%
P/F	0%
P/M	7%
W/F	14%
W/M	58%

Not W/M 42%



DIVERSITY INVESTMENTS IN YOUTH

Explorer Posts 1742, 2252 and 505

In 2015 FCPD opened two new Police Explorer Posts

POST MEMBERSHIP NUMBERS

Post 1742 = 77 (Original Post – Western/Central County)

Post 2252 = 40 (Alexandria – New)

Post 505 = 35 (Annandale/Culmore – New)





COMMUNITY ENGAGEMENT METRICS

Teen Police Academy

Teen Police Academy modeled after Citizens Police Academy

Future Women Leaders in Law Enforcement

Future Women Leaders in Law Enforcement is offered to young women in grades 10, 11, or 12 who desire to learn about the law enforcement profession. Participants meet active female police personnel to learn about personal leadership issues for women.

Both courses were filled and were comprised of great diversity. In CY 2016 via COT we set a goal to increase capacity and locations.





COMMUNITY ENGAGEMENT

Fairfax County Criminal Justice Academy

Each Recruit class is hosted by youth at the Gum Springs Community center in coordination with community leaders to build trust and invest in our future community members. Our Academy mandates this field trip as related to performance based objectives in a variety of modern policing concepts.





COMMUNITY ENGAGEMENT

NATIONAL NIGHT OUT EVENTS COUNTYWIDE AUGUST 4, 2015

- Over **150** events held in communities across all of Fairfax County
- Events included community fun fairs, community potluck dinners, cookouts, ice cream socials, kids activities, neighborhood scavenger hunts, neighborhood walks, pizza parties, pool parties and open swims, and one wine tasting





COMMUNITY ENGAGEMENT

Citizen Advisory Committees

Communities of Trust Committee

Chief's Council on Diversity Recruitment

Community forums organized by faith based organizations.





COMMUNITY ENGAGEMENT METRICS

The Citizens' Police Academy provides information and hands on exposure to training, policies, and the many units and divisions within the Fairfax County Police Department. Recently, alumni have met in a combined session with members of the Chief's Council on Diversity Recruitment, Citizen Advisory Council, and members of the Communities of Trust Committee. Alumni also engage in VIP's, Neighborhood Watch, APO Program, and some have become employed as police officers and civilian employees.





TRENDS AND CHALLENGES

Planning for Emerging Policy and Environmental Changes

Re-engineering the Law Enforcement Profession

- Police Executive Research Forum (PERF) – 71 Recommendations
- Ad Hoc Police Policy and Practice Commission – 142 Core Recommendations
- Commission on Accreditation for Law Enforcement Agencies – 484 Standards
- Virginia Law Enforcement Professional Standards Commission – 190 Standards
- George Mason University 2015 Community Survey (completed – in validation process)

Urbanization – Improving Response Times to Calls for Service

- Moving from suburban policing model to urban models to work in environments of mass transit, night life, city-scape, high-rise mixed-use buildings, and retail.
- Population Growth – Increase Calls for Service / Police Services, complexity, and corresponding domestic pet population



OTHER SELECTED TRENDS AND CHALLENGES

Crimes & Quality of Life

- Mental Health – Diversion First
- Domestic Violence prevention (Lethality Assessment Program, Advocate Support)
- Heroin
- Juvenile Diversion Program – partnership with Juvenile Court – expansion goals
- Human Trafficking
- Emerging Gang Trends in Region
- Homegrown Violent Extremists / Terrorism
- Larcenies
- Cyber Crime
 - Child Exploitation and Identity Theft
- Traffic – Neighborhood Speeding “Slow Down”/Pedestrian Safety



LOOKING FORWARD/TRENDS & CHALLENGES WITHIN LOBS

Re-engineering Specific LOBs

- Recruitment – Diversity, Pay & Benefits, Employer of Choice
- Preservation of the Sanctity of Human Life – Critical Decision Making Training to all sworn personnel Winter/Spring 2016 & sustain annually
- Build capacity to accomplish mission of Preventing & Fighting Crime across all emerging trends through the Five Year Public Safety Staffing Plan (Mental Health, Domestic Violence, Cyber Crime, Human Trafficking, Gang Crime, Heroin, Homegrown Violent Extremists/Terrorism, Impaired Driving, Pedestrian Safety, etc.)
- Increase engagement - Social Media / Community Partnerships
- Urbanization – change policing styles and build capacity for the South County Police Facility
- Reorganization of Public Information Office to the newly created **Public Affairs Bureau** – in process of hiring a civilian director who will report directly to the Chief of Police and continue to develop a newsroom structure to increase transparency
- Equipment and technology – the right tools to achieve the agency's vision & mission across all LOB's



LOOKING FORWARD SUCCESSION PLANNING

Investment in Personnel - Employee Growth Guided By Succession Planning

Examples:

- FBI National Academy and the National Executive Institute
- George Mason University, George Washington University and select academic institutions
- Virginia Association of Chiefs of Police - Professional Executive Leadership School (PELS)
- The International Association of Chiefs of Police (IACP) offers Leadership in Police Organizations; the Women's Leadership Institute; and overseas project assignments with its International Police Education and Training (IPET) teams partnered by U.S. Department of State, IACP staff, university faculty, our embedded command rank police officers, and those from foreign law enforcement agencies.
- Leadership Fairfax
- Commander School
- First Line Supervisor School



DISCUSSION

