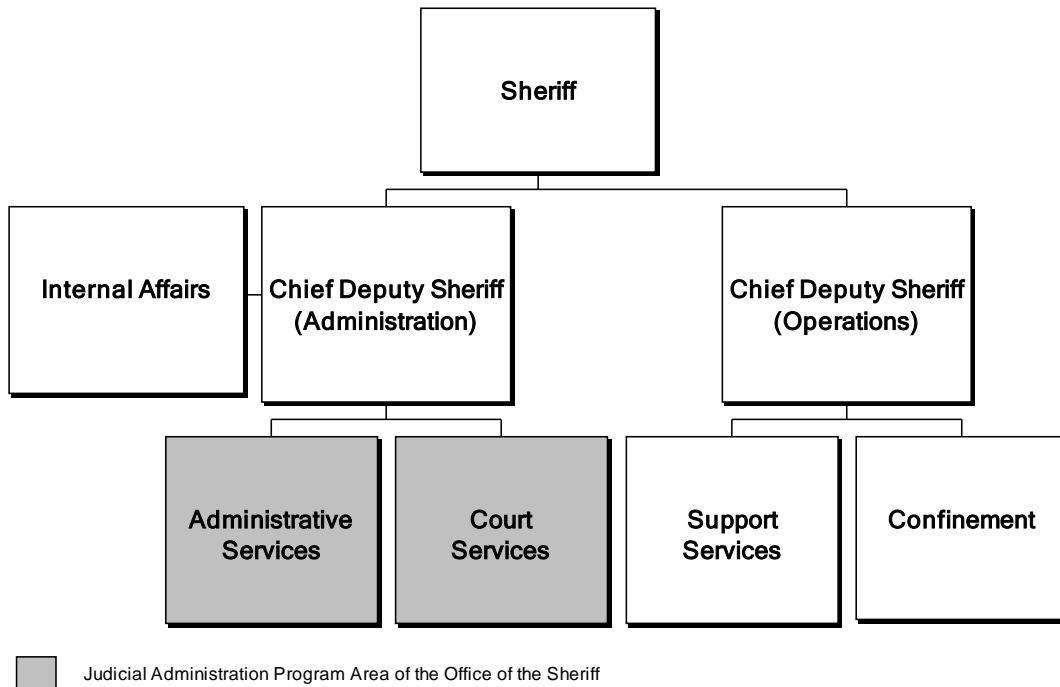


Office of the Sheriff



Information on the entire Office of the Sheriff, including the Judicial Administration Program Area, can be found in the Public Safety section of Volume 1.

Judicial Administration Program Area Summary

Category	FY 2017 Actual	FY 2018 Adopted	FY 2018 Revised	FY 2019 Advertised	FY 2019 Adopted
FUNDING					
Expenditures:					
Personnel Services	\$15,797,845	\$15,435,372	\$15,435,372	\$15,945,863	\$15,945,863
Operating Expenses	4,038,728	4,031,229	4,867,620	4,031,229	4,031,229
Capital Equipment	5,720	0	190,000	0	0
Total Expenditures	\$19,842,293	\$19,466,601	\$20,492,992	\$19,977,092	\$19,977,092
Income:					
State Reimbursement & Other Income	\$4,754,340	\$4,821,463	\$4,789,808	\$4,795,119	\$4,795,119
Total Income	\$4,754,340	\$4,821,463	\$4,789,808	\$4,795,119	\$4,795,119
NET COST TO THE COUNTY	\$15,087,953	\$14,645,138	\$15,703,184	\$15,181,973	\$15,181,973
AUTHORIZED POSITIONS/FULL-TIME EQUIVALENT (FTE)					
Regular	166 / 165.5	166 / 165.5	162 / 161.5	166 / 165.5	162 / 161.5
Exempt	3 / 3	3 / 3	3 / 3	3 / 3	3 / 3
State	27 / 27	27 / 27	27 / 27	27 / 27	27 / 27