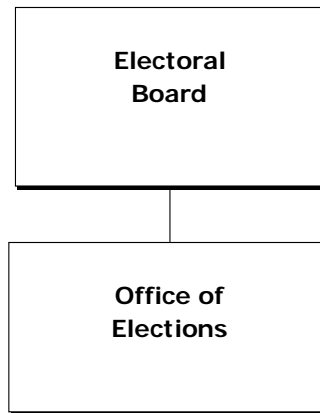


Office of Elections



Mission

To provide each resident of Fairfax County with the opportunity to exercise his or her right to vote in an efficient and equitable manner in accordance with the Constitutions of the United States and the Commonwealth of Virginia and the Code of Virginia.

AGENCY DASHBOARD			
Key Data	FY 2015	FY 2016	FY 2017
1. Election Cycle – Number/Type of Election			
a. Presidential/Redistricting elections	0	0	1
b. Regular Fall election	1	1	1
c. Countywide or federal special election, Presidential Primary and/or June Primary	0	1	2
d. Limited (town/other special)	3	2	1
2. Voter Statistics			
a. Voter Turnout Percent ¹	46%	30%	76%
b. Voter Turnout – raw number	308,397	196,834	563,729
c. Absentee Applications TOTAL	22,958	15,320	141,792
d. Absentee Ballots in Person	13,190	9,596	81,313
e. Absentee Ballots Returned by Mail	5,870	3,492	39,505
3. County Demographics – Growth			
a. Total Population Estimate	1,120,875	1,125,400	1,142,888
b. Total Population 18 and Over	866,294	870,695	870,881
c. Total Registered Voters per State Board of Elections (SBE)	699,533	698,932	741,797
d. Active Voters per SBE	648,728	628,235	698,898
4. County Demographics – Diversity/Language			
a. Spanish: Percent Spoken at Home	12.4%	14.4%	13.1%
b. Asian/Pacific Islander: Percent Spoken at Home	11.7%	11.7%	11.8%
c. Other Indo-European: Percent Spoken at Home	9.2%	8.8%	8.8%

¹ The FY 2017 increase in voter turnout percent is due to the Presidential Election.

Office of Elections

Focus

The Office of Elections is guided by policy set by the State Board of Elections, the State Department of Elections, and the Fairfax County Electoral Board, and is administered by the General Registrar. The Office supports the electoral process which provides Fairfax County citizens with a critical channel to have a voice in their government. The Office is required to conduct fair, transparent elections that accurately reflect the intent of the electorate to ensure continued confidence in the integrity of the electoral process. The Office has two primary statutory functions: voter registration and conducting elections. Additionally, the Office coordinates ballot access for local candidates and ensures that voters and citizens are appropriately informed of upcoming elections and changes in electoral procedures and laws.

The Office provides year-round voter registration and community engagement activities. Using a State maintained statewide database called the Virginia Elections and Registration Information System (VERIS), the Office determines the eligibility of voters maintains the voter registration records database, certifies candidate nominating petitions, processes absentee ballot applications, provides photo IDs, and provides public information and access to electronic lists of registered voters and absentee applicants. In addition to the Office's main location at the Government Center, the Office also manages nine absentee voting locations each fall to ensure that residents throughout the County have access to in-person registration and absentee voting services.

The Office manages the logistics of conducting and certifying elections by recruiting and training election officers, preparing voting equipment, overseeing polling places, preparing ballots, compiling election returns, and posting unofficial election results on the agency's website on election night. In addition, the Office receives, audits, and provides public access to candidates' campaign contribution and expenditure reports. The Office also develops voter information and procedures to comply with federal and state laws, and responds to inquiries, suggestions and complaints from voters, campaigns, candidates, elected officials and the press.

The Office of Elections supports the following County Vision Elements:



Creating a Culture of Engagement



Connecting People and Places



Exercising Corporate Stewardship

The workload and related expenses of the Office are related to the number of voter registrations as well as the election turnout and the number of absentee ballots received. The Office is responsible for analyzing all of these variables and for developing plans and programs to facilitate successful elections.

In FY 2017, the Office of Elections successfully administered the 2016 Presidential Election with approximately 684,547 votes being cast, including absentee voting. This success was due, in large part, to investments made by the Board of Supervisors following the establishment of the Bipartisan Election Process Improvement Commission which was tasked with making recommendations on how to improve the voting process following the 2012 Presidential Election. Specifically, the investment in new electronic pollbooks with the lists of registered voters allowed voters and election officers to check-in quickly, which significantly reduced lines. In addition, the purchase of new ballot tabulators eliminated the dual voting system previously utilized, which extended the time required for each citizen to vote.

Office of Elections

The Office also implemented a new “sample ballot” mailer to every registered voter in Fairfax County ahead of the 2016 November Election. The sample ballots contained critical information about each voters’ selections, Voter Photo ID requirements, and absentee voting opportunities. The mailing was a huge success and voters were seen throughout the County at absentee locations and their polling places with the sample ballots. The Fairfax County Electoral Board, per the recommendation of the General Registrar, has requested that this practice be continued for every November General Election, beginning with the November 2017 General Election.

At the beginning of FY 2018, the General Registrar implemented a new voter registration notification procedure that reduced the cost of every correspondence from approximately \$0.70/piece to less than \$0.20/piece. The Office continues to look towards innovations and technology solutions to improve communications with voters, election officers, and the media to ensure critical information is disseminated quickly.

In future years, the Office anticipates that the State Department of Elections (ELECT) will continue to reduce the amount of support provided. As a result, the Office will continue to rely on funding from the County to ensure elections are efficiently conducted.

Budget and Staff Resources

Category	FY 2017 Actual	FY 2018 Adopted	FY 2018 Revised	FY 2019 Advertised
FUNDING				
Expenditures:				
Personnel Services	\$4,080,705	\$3,211,796	\$3,411,796	\$3,307,888
Operating Expenses	1,029,806	861,637	906,131	861,637
Total Expenditures	\$5,110,511	\$4,073,433	\$4,317,927	\$4,169,525
Income:				
State Shared General Registrar Expenses	\$86,874	\$85,806	\$85,806	\$85,806
Total Income	\$86,874	\$85,806	\$85,806	\$85,806
NET COST TO THE COUNTY	\$5,023,637	\$3,987,627	\$4,232,121	\$4,083,719
AUTHORIZED POSITIONS/FULL-TIME EQUIVALENT (FTE)				
Regular	25 / 25	25 / 25	25 / 25	25 / 25
Exempt	5 / 5	5 / 5	5 / 5	5 / 5
1 General Registrar, E	1 IT Technician II	1 Financial Specialist I		
2 Management Analysts III, 1E	1 Business Analyst IV	4 Administrative Assistants V, 2E		
2 Management Analysts II	1 Business Analyst II	8 Administrative Assistants IV		
3 Management Analysts I, 1E	1 Business Analyst I	5 Administrative Assistants III		
TOTAL POSITIONS				
30 Positions / 30.0 FTE				
E Denotes Exempt Positions				

Office of Elections

FY 2019 Funding Adjustments

The following funding adjustments from the FY 2018 Adopted Budget Plan are necessary to support the FY 2019 program.

- ◆ **Employee Compensation** **\$96,092**
 An increase of \$96,092 in Personnel Services includes \$72,266 for a 2.25 percent market rate adjustment (MRA) for all employees and \$23,826 for performance-based and longevity increases for non-uniformed merit employees, both effective July 2018.

Changes to FY 2018 Adopted Budget Plan

The following funding adjustments reflect all approved changes in the FY 2018 Revised Budget Plan since passage of the FY 2018 Adopted Budget Plan. Included are all adjustments made as part of the FY 2017 Carryover Review, and all other approved changes through December 31, 2017.

- ◆ **Carryover Adjustments** **\$244,494**
 As part of the FY 2017 Carryover Review, the Board of Supervisors approved encumbered funding of \$44,494 primarily for costs related to the voter registration and Elections Management that was added to the FY 2018 budget. The Board also approved unencumbered funding of \$200,000 to cover costs associated with the county-wide August 2017 Special Election.

Key Performance Measures

Indicator	Prior Year Actuals			Current Estimate	Future Estimate
	FY 2015 Actual	FY 2016 Actual	FY 2017 Estimate/Actual	FY 2018	FY 2019
Office of Elections					
Machines/precinct	3.34	3.11	3.97/4.15	3.0	3.0
Officers/precinct	10.89	9.23	14.46/14.98	10.0	10.0
Percent of registrations, transfers and address/name changes completed without error	98.1%	98.0%	98.2%/98.1%	98.0%	98.0%

A complete list of performance measures can be viewed at
<https://www.fairfaxcounty.gov/budget/fy-2019-advertised-performance-measures-pm>

Performance Measurement Results

During the 2016 Presidential Election in FY 2017, the voter turnout was 76 percent of the 741,797 registered voters in Fairfax County. A total of 563,729 registered voters visited their precinct to vote during the Presidential Election. The total number of precincts in Fairfax County is 243, and an average of 2,512 voters voted at each of these precincts. Absentee applications totaled 141,792. Of this amount, 81,313 were in person. The number of voting machines used was 1,008, an increase of 259, or 34.58 percent, from the FY 2016 total of 749 machines. 10 absentee satellites were used during the Presidential Election. In Fiscal Years 2015 and 2016, only seven satellites were used.

The Office continues to monitor voter registration activity and its operational impact. Virginia law requires that submitted voter registration applications be processed within 30 days of receipt of the application. Additionally, absentee applications are required to be processed in less than three days. The Virginia Department of Elections had monitored this data through calendar year 2015, however no longer provides the analysis. Office leadership remains cognizant of these requirements and continuously monitors incoming traffic to ensure compliance with statutes and provide rapid service to voters.