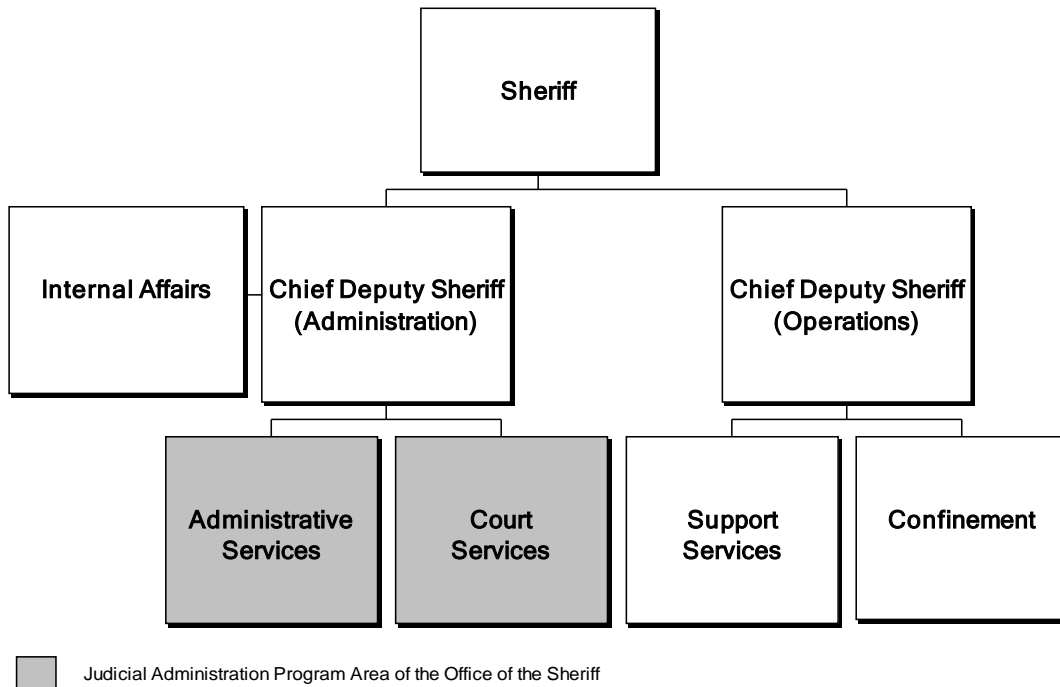


Office of the Sheriff



Information on the entire Office of the Sheriff, including the Judicial Administration Program Area, can be found in the Public Safety section of Volume 1.

Judicial Administration Program Area Summary

| Category | FY 2017 Actual | FY 2018 Adopted | FY 2018 Revised | FY 2019 Advertised |
|--|---------------------|---------------------|---------------------|-----------------------|
| FUNDING | | | | |
| Expenditures: | | | | |
| Personnel Services | \$15,797,845 | \$15,435,372 | \$15,435,372 | \$15,945,863 |
| Operating Expenses | 4,038,728 | 4,031,229 | 4,867,620 | 4,031,229 |
| Capital Equipment | 5,720 | 0 | 190,000 | 0 |
| Total Expenditures | \$19,842,293 | \$19,466,601 | \$20,492,992 | \$19,977,092 |
| Income: | | | | |
| State Reimbursement & Other Income | \$4,754,340 | \$4,821,463 | \$4,789,808 | \$4,795,119 |
| Total Income | \$4,754,340 | \$4,821,463 | \$4,789,808 | \$4,795,119 |
| NET COST TO THE COUNTY | \$15,087,953 | \$14,645,138 | \$15,703,184 | \$15,181,973 |
| AUTHORIZED POSITIONS/FULL-TIME EQUIVALENT (FTE) | | | | |
| Regular | 166 / 165.5 | 166 / 165.5 | 166 / 165.5 | 166 / 165.5 |
| Exempt | 3 / 3 | 3 / 3 | 3 / 3 | 3 / 3 |
| State | 27 / 27 | 27 / 27 | 27 / 27 | 27 / 27 |