

FY 2020 – FY 2024
Capital Improvement Program (CIP)
Planning Commission Workshop

Police Department

March 13, 2019

Fairfax County Police Department



Current Police Department CIP Projects

- **2015 Public Safety Bond Referendum Project:**
 - Franconia Police Station and Governmental Center/Museum – *in pre-design*
(Co-location with Kingstowne Library/Active Adult Center)
 - Operations Support Bureau (Pine Ridge) – *in design*
 - South County Police Station and Animal Shelter – *in design*
 - Emergency Vehicle Operations Center – *in design*
 - Police Heliport – *in design*
- **2018 Public Safety Bond Referendum Projects:**
 - Police Annex (Evidence Storage)
 - Mason District Police Station
 - Criminal Justice Academy



Future Police CIP Projects

Priority	Facility	Year Built	Existing SF	Funding
#1 2026 Bond and Beyond	Mount Vernon Police Station	1981	33,000 SF	\$36 M
#2 2026 Bond and Beyond	West Springfield Police Station	1974	33,000 SF	\$36 M
#3 2026 Bond and Beyond	Sully Police Station	2002	31,000 SF	\$38 M
Future	Tysons Urban Police Station	N/A	N/A	TBD

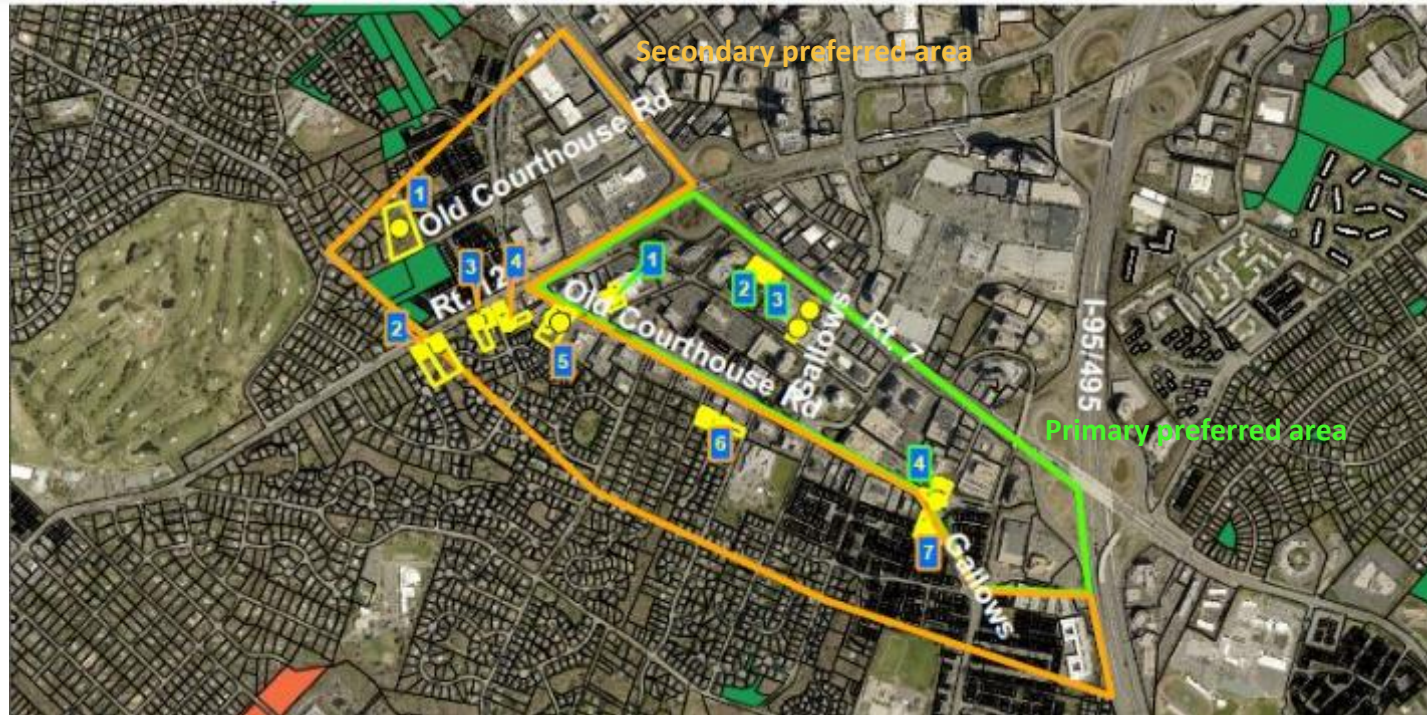


Future CIP Projects

- **2026 Public Safety Bond Referendum:**
 - Mount Vernon Police Station
 - West Springfield Police Station
 - Sully District Police Station
- **Project priority based on the following:**
 - Facility age and condition of building systems
 - Facility deficiencies:
 - Inadequate operations and support space
 - Inefficient floor plan layout for current police operations
 - Security and technology upgrades needed
 - Cameras, signage, consistent technology
 - Upgrade of security gates/fencing
 - Site modifications required
 - Secure parking and fueling station expansion and/or reconfiguration
 - Lighting upgrades



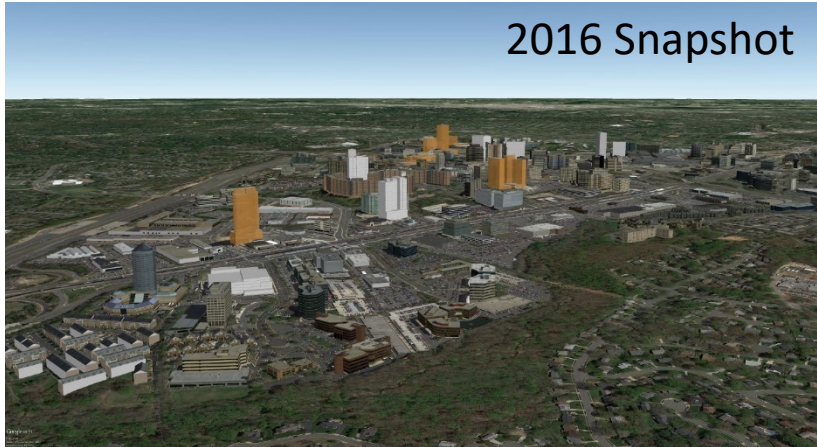
Future CIP Project : Tysons Police Station



Preferred Location Boundaries

- **Potential Development Options:**
 - Proffer in coordination with DPZ
 - Joint Development, County funds as part of a larger redevelopment working with OCR and DPZ

Future CIP Project: Tysons Police Station



Overview

- Establish Foothold with expansion in mind
 - New **Urban Model** police station
- Area continues to grow at a rapid pace
 - GMU Study shows a potential job growth of 86% and a population growth of 364% between 2010 and 2050
 - Development of an additional 57M SF of Residential and Commercial space between 2010 and 2050
 - Metro Silver Line opened with ongoing expansion
- The transition to an urban environment will cause police workload to double within the next 20 years
- McLean District Station will be unable to absorb the substantial increase in workload and required staffing and traditional policing methods



Questions:

Major Robert Blakley
Fairfax County Police Department
Resource Management Bureau
Phone: 703-246-4251
Robert.Blakley@fairfaxcounty.gov

