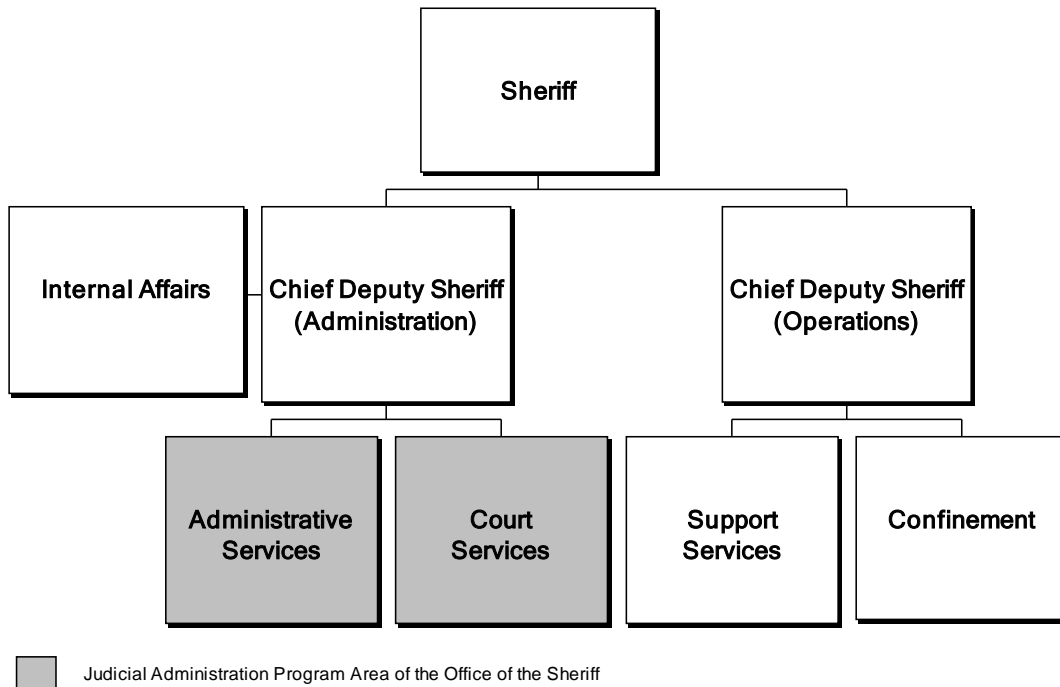


Office of the Sheriff



Information on the entire Office of the Sheriff, including the Judicial Administration Program Area, can be found in the Public Safety section of Volume 1.

Judicial Administration Program Area Summary

Category	FY 2018 Actual	FY 2019 Adopted	FY 2019 Revised	FY 2020 Advertised
FUNDING				
Expenditures:				
Personnel Services	\$15,914,461	\$15,945,863	\$15,945,863	\$16,425,369
Operating Expenses	3,917,669	4,031,229	5,618,637	4,031,229
Capital Equipment	70,655	0	0	0
Total Expenditures	\$19,902,785	\$19,977,092	\$21,564,500	\$20,456,598
Income:				
State Reimbursement & Other Income	\$4,709,157	\$4,795,119	\$4,774,795	\$4,823,711
Total Income	\$4,709,157	\$4,795,119	\$4,774,795	\$4,823,711
NET COST TO THE COUNTY	\$15,193,628	\$15,181,973	\$16,789,705	\$15,632,887
AUTHORIZED POSITIONS/FULL-TIME EQUIVALENT (FTE)				
Regular	162 / 161.5	162 / 161.5	161 / 160.5	161 / 160.5
Exempt	3 / 3	3 / 3	3 / 3	3 / 3
State	27 / 27	27 / 27	27 / 27	27 / 27