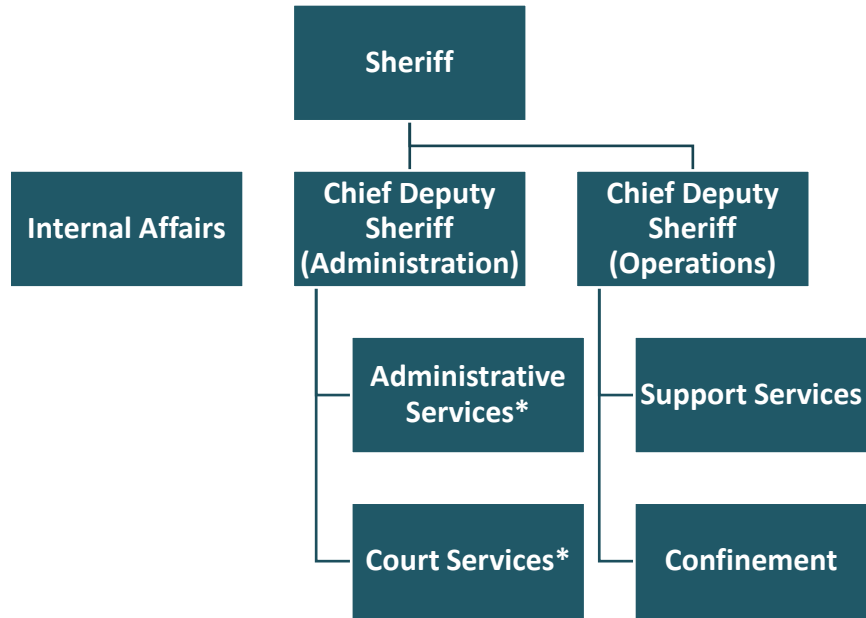


# Office of the Sheriff

## Organizational Chart



\*Judicial Administration Program Area of the Office of the Sheriff

Information on the entire Office of the Sheriff, including the Judicial Administration Program Area, can be found in the Public Safety section of Volume 1.

## Budget and Staff Resources

### Judicial Administration Program Area Summary

Category	FY 2019 Actual	FY 2020 Adopted	FY 2020 Revised	FY 2021 Advertised
<b>FUNDING</b>				
<b>Expenditures:</b>				
Personnel Services	\$16,589,545	\$16,601,880	\$16,601,880	\$17,247,177
Operating Expenses	4,753,879	4,031,229	5,352,860	4,031,229
Capital Equipment	44,189	0	0	0
<b>Total Expenditures</b>	<b>\$21,387,613</b>	<b>\$20,633,109</b>	<b>\$21,954,740</b>	<b>\$21,278,406</b>
<b>Total Income</b>	<b>\$4,830,175</b>	<b>\$4,857,775</b>	<b>\$4,853,979</b>	<b>\$4,867,549</b>
<b>NET COST TO THE COUNTY</b>	<b>\$16,557,438</b>	<b>\$15,775,334</b>	<b>\$17,100,761</b>	<b>\$16,410,857</b>
<b>AUTHORIZED POSITIONS/FULL-TIME EQUIVALENT (FTE)</b>				
Regular	161 / 160.5	161 / 160.5	160 / 159.5	160 / 159.5
Exempt	3 / 3	3 / 3	4 / 4	4 / 4
State	27 / 27	27 / 27	27 / 27	27 / 27