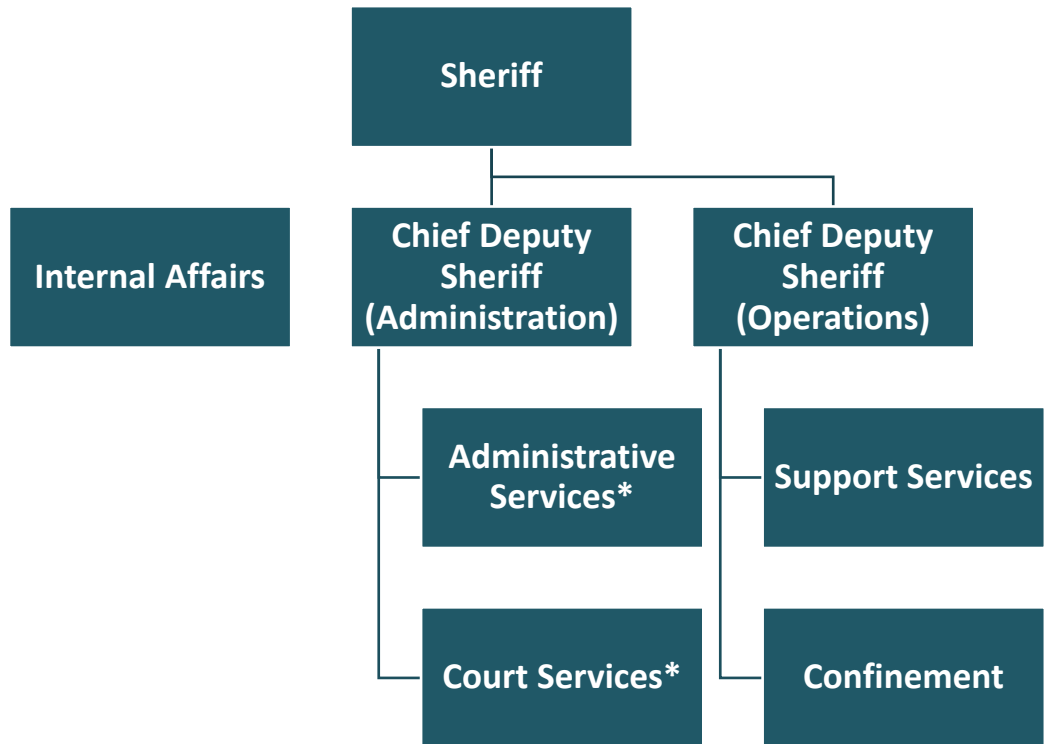


Office of the Sheriff

Organizational Chart



*Judicial Administration Program Area of the Office of the Sheriff

Information on the entire Office of the Sheriff, including the Judicial Administration Program Area, can be found in the Public Safety section of Volume 1.

Budget and Staff Resources

Judicial Administration Program Area Summary

Category	FY 2020 Actual	FY 2021 Adopted	FY 2021 Revised	FY 2022 Advertised	FY 2022 Adopted
FUNDING					
Expenditures:					
Personnel Services	\$16,619,429	\$16,601,880	\$16,765,380	\$16,601,880	\$16,767,481
Operating Expenses	4,936,547	4,031,229	3,932,259	4,031,229	4,031,229
Capital Equipment	5,512	0	27,809	0	0
Total Expenditures	\$21,561,488	\$20,633,109	\$20,725,448	\$20,633,109	\$20,798,710
Total Income	\$4,459,471	\$4,867,549	\$3,634,233	\$4,916,114	\$4,916,114
NET COST TO THE COUNTY	\$17,102,017	\$15,765,560	\$17,091,215	\$15,716,995	\$15,882,596
AUTHORIZED POSITIONS/FULL-TIME EQUIVALENT (FTE)					
Regular	159 / 158.5	159 / 158.5	164 / 163.5	162 / 161.5	164 / 163.5
Exempt	4 / 4	4 / 4	4 / 4	4 / 4	4 / 4
State	27 / 27	27 / 27	27 / 27	27 / 27	27 / 27