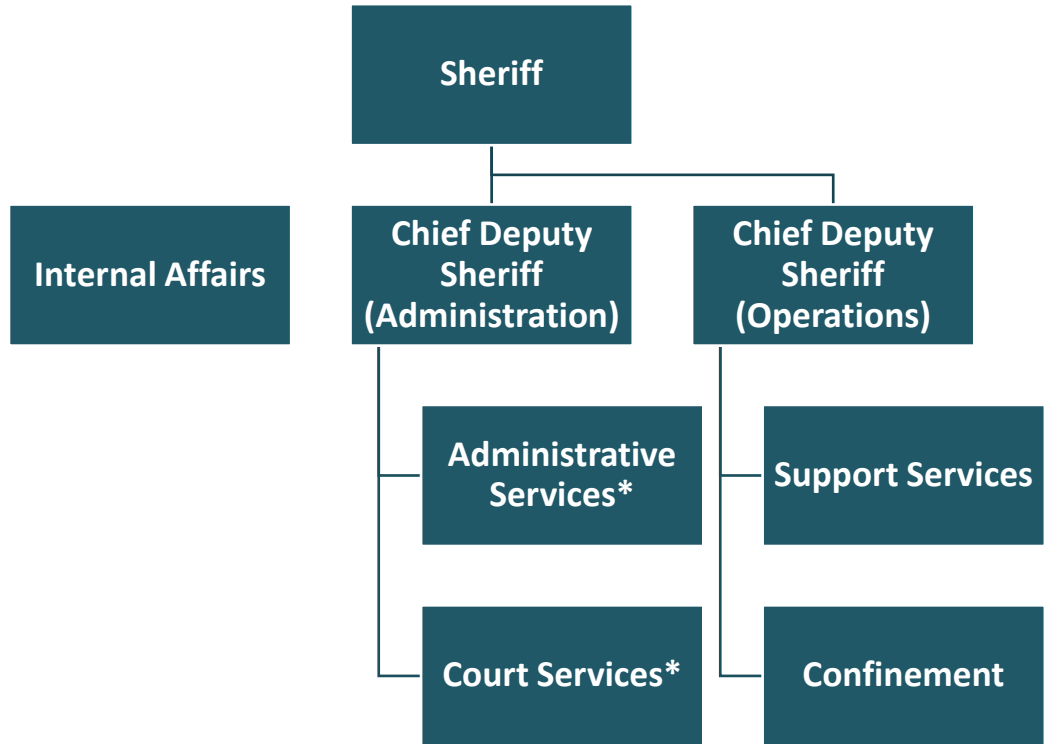


Office of the Sheriff

Organizational Chart



*Judicial Administration Program Area of the Office of the Sheriff

Information on the entire Office of the Sheriff, including the Judicial Administration Program Area, can be found in the Public Safety section of Volume 1.

Budget and Staff Resources

Judicial Administration Program Area Summary

Category	FY 2021 Actual	FY 2022 Adopted	FY 2022 Revised	FY 2023 Advertised	FY 2023 Adopted
FUNDING					
Expenditures:					
Personnel Services	\$16,485,394	\$16,767,481	\$16,559,981	\$17,730,722	\$17,914,542
Operating Expenses	3,469,136	4,031,229	5,395,009	4,057,696	4,057,696
Capital Equipment	0	0	747,932	0	0
Total Expenditures	\$19,954,530	\$20,798,710	\$22,702,922	\$21,788,418	\$21,972,238
Total Income	\$3,649,456	\$4,916,114	\$3,825,741	\$3,824,180	\$3,824,180
NET COST TO THE COUNTY	\$16,305,074	\$15,882,596	\$18,877,181	\$17,964,238	\$18,148,058
AUTHORIZED POSITIONS/FULL-TIME EQUIVALENT (FTE)					
Regular	164 / 163.5	164 / 163.5	165 / 164.5	165 / 164.5	165 / 164.5
Exempt	4 / 4	4 / 4	4 / 4	4 / 4	4 / 4
State	27 / 27	27 / 27	2 / 2	4 / 4	2 / 2