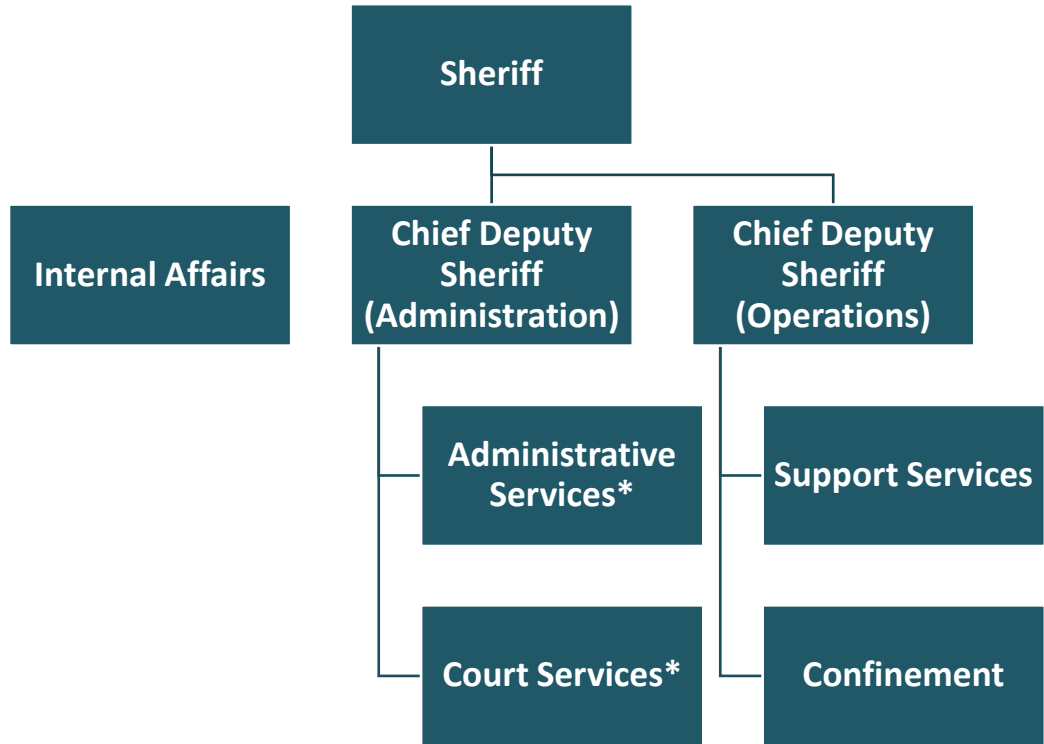


Office of the Sheriff

Organizational Chart



*Judicial Administration Program Area of the Office of the Sheriff

Information on the entire Office of the Sheriff, including the Judicial Administration Program Area, can be found in the Public Safety section of Volume 1.

Budget and Staff Resources

Judicial Administration Program Area Summary

| Category | FY 2022 Actual | FY 2023 Adopted | FY 2023 Revised | FY 2024 Advertised |
|--------------------------------------------------------|---------------------|---------------------|---------------------|---------------------|
| FUNDING | | | | |
| Expenditures: | | | | |
| Personnel Services | \$17,344,381 | \$17,914,542 | \$17,914,542 | \$18,737,386 |
| Operating Expenses | 4,359,250 | 4,057,696 | 5,451,060 | 4,224,188 |
| Capital Equipment | 632,615 | 0 | 38,486 | 0 |
| Total Expenditures | \$22,336,246 | \$21,972,238 | \$23,404,088 | \$22,961,574 |
| Total Income | \$4,068,181 | \$3,824,180 | \$4,029,284 | \$4,315,763 |
| NET COST TO THE COUNTY | \$18,268,065 | \$18,148,058 | \$19,374,804 | \$18,645,811 |
| AUTHORIZED POSITIONS/FULL-TIME EQUIVALENT (FTE) | | | | |
| Regular | 165 / 164.5 | 165 / 164.5 | 165 / 164.5 | 165 / 164.5 |
| Exempt | 4 / 4 | 4 / 4 | 4 / 4 | 4 / 4 |
| State | 2 / 2 | 2 / 2 | 2 / 2 | 2 / 2 |